



PUBLIC WORKS DEPARTMENT

2024 CITYWIDE SEWER/STORM DRAIN LINING PROJECT

SHEET INDEX:

- 1 TITLE SHEET
- 2 MORRISSEY BOULEVARD
- 3 CENTENNIAL STREET
- 4 OXFORD WAY
- 5 DE LA COSTA AVENUE
- 6 GAULT STREET
- 7 COLUMBIA STREET
- 8 STOCKTON AVENUE
- 9 ALLEGRO DRIVE
- 10 LAURENT STREET



VICINITY MAP
NOT TO SCALE

APPROVED BY:

ASSISTANT DIRECTOR / CITY ENGINEER
CITY OF SANTA CRUZ



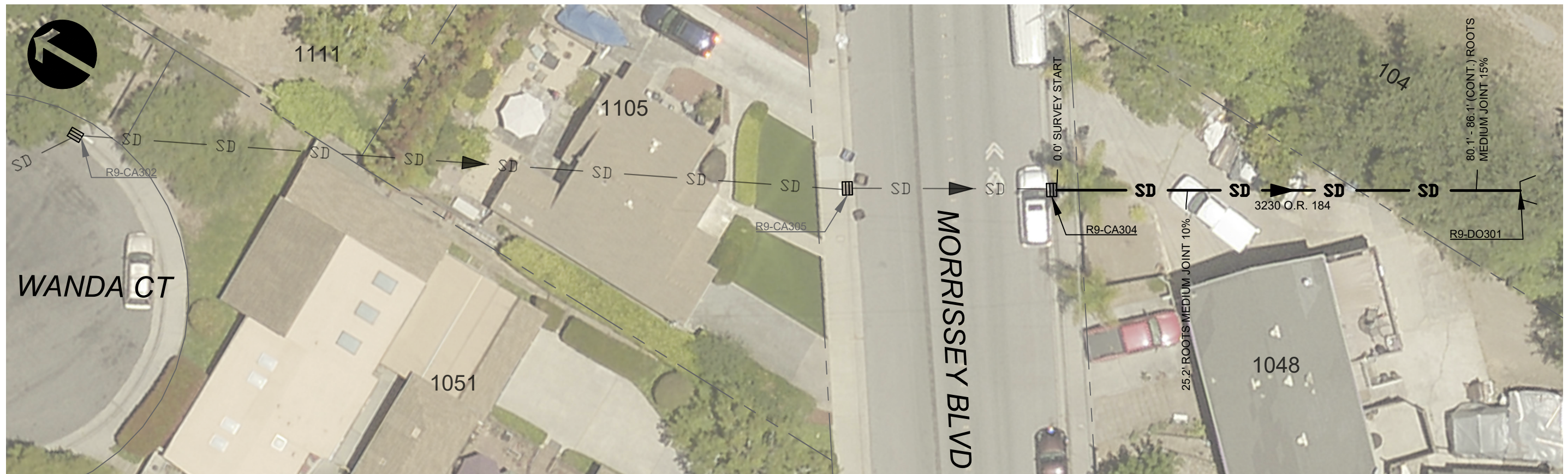
REFERENCES	DATE	5/14/2024	SCALE	NOT TO SCALE
FIELD BOOK: #	DRAWN	ADH	SHEET	1 OF 10
DRAWING #: #	DESIGN	CS	VAULT NO.	#9210
	CHECKED	HY		

STORM DRAIN PIPELINE LINING SCHEDULE

LOCATION	UPSTREAM STRUCTURE	DOWNSTREAM STRUCTURE	LINING LENGTH (FT)	DIAMETER (INCHES)	EXISTING MATERIAL	LATERALS - RECONNECT
MORRISSEY BLVD	R9-CA304	R9-DO301	89	15	RCP	0

NOTES:

1. CONTRACTOR SHALL CONFIRM PIPE MATERIAL, DIAMETER, & LENGTH
2. CONTRACTOR TO DYE TEST LATERALS INDICATED WITH "?" TO RE-OPEN OR CLOSE
3. DEFECTS LESS THAN A GRADE OF 3 ARE NOT SHOWN. CONTRACTOR SHALL REVIEW PRE-LINING CCTV TO FULLY DETERMINE PIPE CONDITION.
4. STORM DRAIN ON APN 009-112-12 HAS A 10' WIDE SD EASEMENT PER 3230 O.R. 183 - 185.



REVISIONS



CITY OF
SANTA CRUZ
PUBLIC WORKS DEPARTMENT
809 Center Street, Room 201
Santa Cruz, CA 95060

**2024 CITYWIDE SEWER/STORM
DRAIN LINING PROJECT**
MORRISSEY BOULEVARD

REFERENCES
FIELD BOOK:

DRAWING #:
3558

DATE	5/14/2024
DRAWN	ADH
DESIGN	CS
CHECKED	HY

SCALE	1" = 20'
SHEET	2 OF 10
VAULT NO.	#9210

SANITARY SEWER PIPELINE LINING SCHEDULE

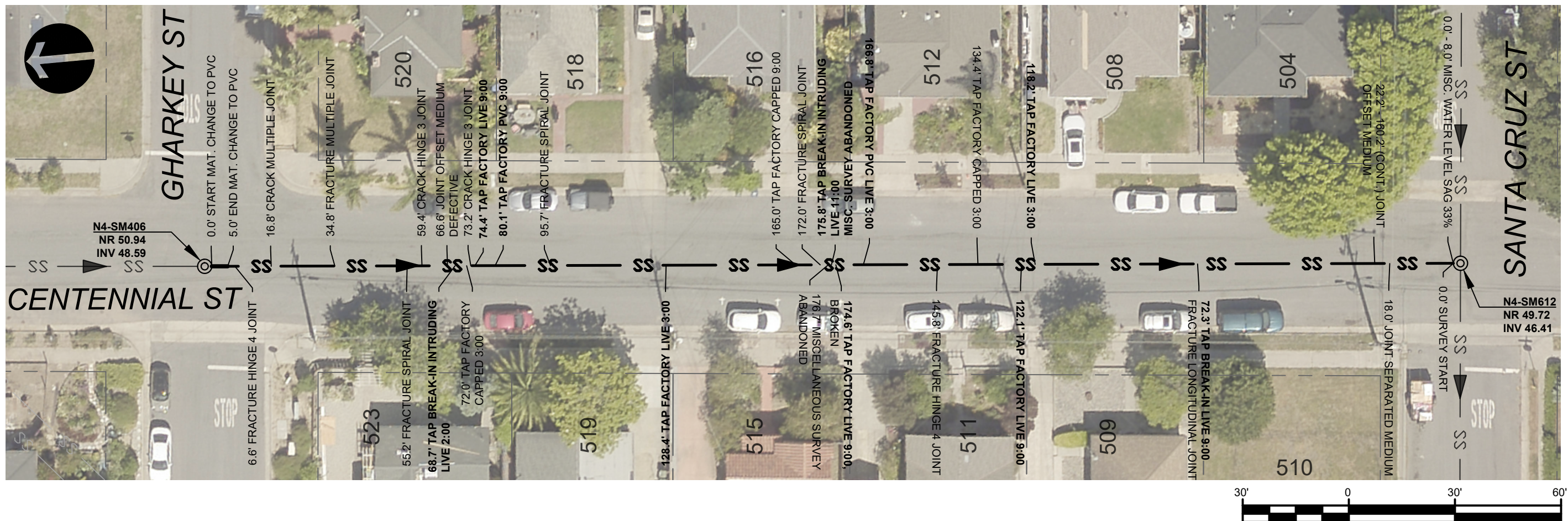
LOCATION	UPSTREAM STRUCTURE	DOWNSTREAM STRUCTURE	LINING LENGTH (FT)	DIAMETER (INCHES)	EXISTING MATERIAL	LATERALS - RECONNECT
CENTENNIAL STREET	N4-SM406	N4-SM612	351	6	VCP	10

NOTES:

1. CONTRACTOR SHALL CONFIRM PIPE MATERIAL, DIAMETER, & LENGTH
2. CONTRACTOR TO DYE TEST LATERALS INDICATED WITH "?" TO RE-OPEN OR CLOSE
3. DEFECTS LESS THAN A GRADE OF 3 ARE NOT SHOWN. CONTRACTOR SHALL REVIEW PRE-LINING CCTV TO FULLY DETERMINE PIPE CONDITION.
4. CCTV ABANDONED FROM BOTH DIRECTIONS. DISTANCES SHOWN WILL BE FROM BOTH DIRECTIONS, JOINING TOGETHER AT ABANDONED POINT.

MANHOLE REHABILITATION SCHEDULE

LOCATION	STRUCTURE ID	APPROXIMATE DEPTH (FT)	DIAMETER (INCHES)	MATERIAL
CENTENNIAL STREET	N4-SM406	2.5	48	BRICK
	N4-SM612	3	48	BRICK



REVISIONS	



CITY OF
SANTA CRUZ
PUBLIC WORKS DEPARTMENT
809 Center Street, Room 201
Santa Cruz, CA 95060

**2024 CITYWIDE SEWER/STORM
DRAIN LINING PROJECT**
CENTENNIAL STREET

REFERENCES	DATE	SCALE
FIELD BOOK: #	11/29/2023	1" = 30'
DRAWING #:	ADH	SHEET 3 OF 10
	CS	VAULT NO. #9210
	HY	

SANITARY SEWER PIPELINE LINING SCHEDULE

LOCATION	UPSTREAM STRUCTURE	DOWNSTREAM STRUCTURE	LENGTH (FT)	DIAMETER (INCHES)	EXISTING MATERIAL	LATERALS - RECONNECT
OXFORD WAY	M3-SM503	M3-SM507	298	6	VCP	11

NOTES:

- CONTRACTOR SHALL CONFIRM PIPE MATERIAL, DIAMETER, & LENGTH
- CONTRACTOR TO DYE TEST LATERALS INDICATED WITH "?" TO RE-OPEN OR CLOSE
- DEFECTS LESS THAN A GRADE OF 3 ARE NOT SHOWN. CONTRACTOR SHALL REVIEW PRE-LINING CCTV TO FULLY DETERMINE PIPE CONDITION.

MANHOLE REHABILITATION SCHEDULE

LOCATION	STRUCTURE ID	APPROXIMATE DEPTH (FT)	DIAMETER (INCHES)	MATERIAL
OXFORD WAY	M3-SM503	5	48	BRICK



REVISIONS	



CITY OF
SANTA CRUZ
PUBLIC WORKS DEPARTMENT
809 Center Street, Room 201
Santa Cruz, CA 95060

**2024 CITYWIDE SEWER/STORM
DRAIN LINING PROJECT**
OXFORD WAY

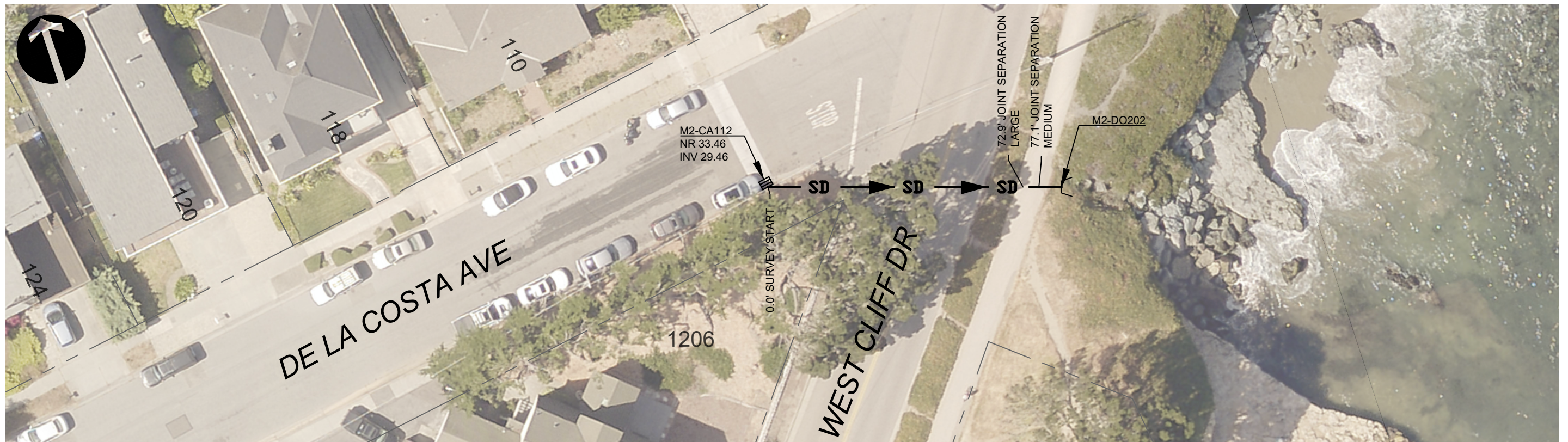
REFERENCES	DATE	SCALE
FIELD BOOK: #	5/14/2024	1" = 30'
DRAWING #:	DRAWN ADH	SHEET 4 OF 10
	DESIGN CS	VAULT NO. #9210
	CHECKED HY	

STORM DRAIN PIPELINE LINING SCHEDULE

LOCATION	UPSTREAM STRUCTURE	DOWNSTREAM STRUCTURE	LINING LENGTH (FT)	DIAMETER (INCHES)	EXISTING MATERIAL	LATERALS - RECONNECT
DE LA COSTA AVENUE	M2-CA112	M2-DO202	84	18	RCP	0

NOTES:

1. CONTRACTOR SHALL CONFIRM PIPE MATERIAL, DIAMETER, & LENGTH
2. CONTRACTOR TO DYE TEST LATERALS INDICATED WITH "?" TO RE-OPEN OR CLOSE
3. DEFECTS LESS THAN A GRADE OF 3 ARE NOT SHOWN. CONTRACTOR SHALL REVIEW PRE-LINING CCTV TO FULLY DETERMINE PIPE CONDITION.



REVISIONS	



CITY OF
SANTA CRUZ
PUBLIC WORKS DEPARTMENT
809 Center Street, Room 201
Santa Cruz, CA 95060

**2024 CITYWIDE SEWER/STORM
DRAIN LINING PROJECT**
DE LA COSTA AVENUE

REFERENCES
FIELD BOOK:

DRAWING #:
4609

DATE	1/10/2024	SCALE	1" = 30'
DRAWN	ADH	SHEET	5 OF 10
DESIGN	CS	VAULT NO.	#9210
CHECKED	HY		

SANITARY SEWER PIPELINE LINING SCHEDULE

LOCATION	UPSTREAM STRUCTURE	DOWNSTREAM STRUCTURE	LINING LENGTH (FT)	DIAMETER (INCHES)	EXISTING MATERIAL	LATERALS - RECONNECT
GAULT STREET	P7-SM215	P7-SM210	47	6	VCP	1
	P7-SM210	P7-SM205	258	6	VCP	8

NOTES:

- CONTRACTOR SHALL CONFIRM PIPE MATERIAL, DIAMETER, & LENGTH
- CONTRACTOR TO DYE TEST LATERALS INDICATED WITH "?" TO RE-OPEN OR CLOSE
- DEFECTS LESS THAN A GRADE OF 3 ARE NOT SHOWN. CONTRACTOR SHALL REVIEW PRE-LINING CCTV TO FULLY DETERMINE PIPE CONDITION.

MANHOLE REHABILITATION SCHEDULE

LOCATION	STRUCTURE ID	APPROXIMATE DEPTH (FT)	DIAMETER (INCHES)	MATERIAL
GAULT STREET	P7-SM205	6	48	BRICK
	P7-SM210	3	48	BRICK



REVISIONS	



CITY OF
SANTA CRUZ
PUBLIC WORKS DEPARTMENT
809 Center Street, Room 201
Santa Cruz, CA 95060

**2024 CITYWIDE SEWER/STORM
DRAIN LINING PROJECT**
GAULT STREET

REFERENCES	DATE	SCALE
FIELD BOOK: #	1/11/2024	1" = 40'
DRAWING #:	DRAWN ADH	SHEET 6 OF 10
	DESIGN CS	VAULT NO. #9210
	CHECKED HY	

SANITARY SEWER PIPELINE LINING SCHEDULE

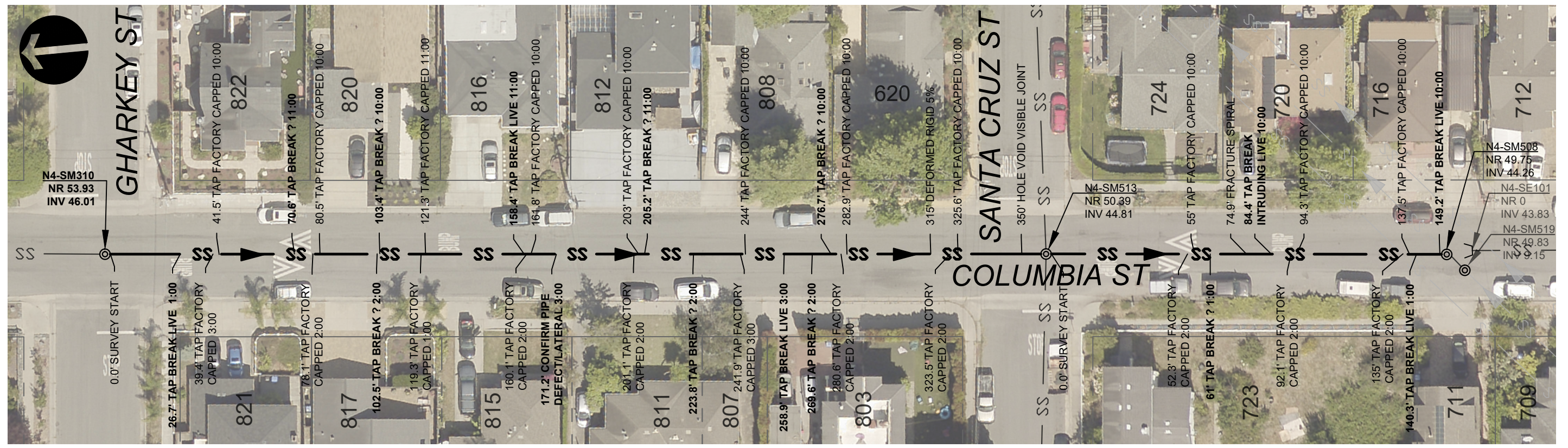
LOCATION	UPSTREAM STRUCTURE	DOWNSTREAM STRUCTURE	LINING LENGTH (FT)	DIAMETER (INCHES)	EXISTING MATERIAL	LATERALS - RECONNECT
COLUMBIA STREET	N4-SM310	N4-SM513	357	12	VCP	11
	N4-SM513	N4-SM508	150	12	VCP	4

NOTES:

1. CONTRACTOR SHALL CONFIRM PIPE MATERIAL, DIAMETER, & LENGTH
2. CONTRACTOR TO DYE TEST LATERALS INDICATED WITH "?" TO RE-OPEN OR CLOSE
3. DEFECTS LESS THAN A GRADE OF 3 ARE NOT SHOWN. CONTRACTOR SHALL REVIEW PRE-LINING CCTV TO FULLY DETERMINE PIPE CONDITION.
4. CCTV PLAN SET FOOTAGE RESET AT MANHOLE N4-SM513

MANHOLE REHABILITATION SCHEDULE

LOCATION	STRUCTURE ID	APPROXIMATE DEPTH (FT)	DIAMETER (INCHES)	MATERIAL
COLUMBIA STREET	N4-SM310	8	48	BRICK



REVISIONS



CITY OF
SANTA CRUZ
PUBLIC WORKS DEPARTMENT
809 Center Street, Room 201
Santa Cruz, CA 95060

**2024 CITYWIDE SEWER/STORM
DRAIN LINING PROJECT**
COLUMBIA STREET

REFERENCES FIELD BOOK: # DRAWING #:	DATE	1/17/2024	SCALE	1" = 40'
	DRAWN	ADH	SHEET	7 OF 10
	DESIGN	CS	VAULT NO.	#9210
	CHECKED	HY		

SANITARY SEWER PIPELINE LINING SCHEDULE

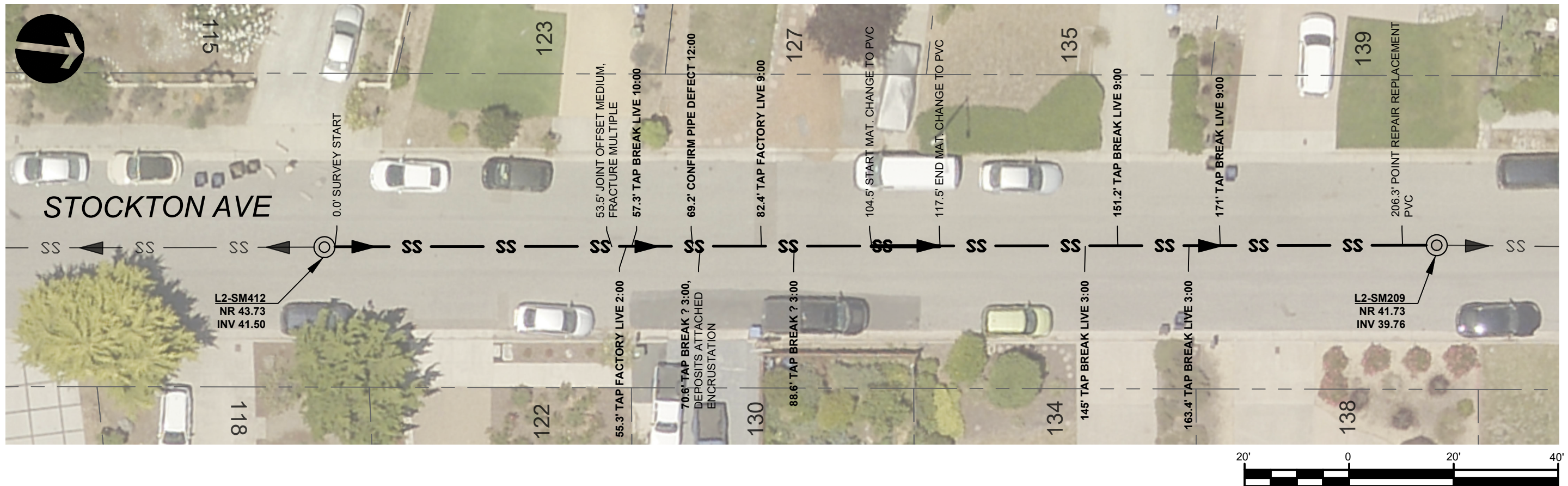
LOCATION	UPSTREAM STRUCTURE	DOWNSTREAM STRUCTURE	LINING LENGTH (FT)	DIAMETER (INCHES)	EXISTING MATERIAL	LATERALS - RECONNECT
STOCKTON AVENUE	L2-SM412	L2-SM209	209	6	VCP	9

NOTES:

1. CONTRACTOR SHALL CONFIRM PIPE MATERIAL, DIAMETER, & LENGTH
2. CONTRACTOR TO DYE TEST LATERALS INDICATED WITH "?" TO RE-OPEN OR CLOSE
3. DEFECTS LESS THAN A GRADE OF 3 ARE NOT SHOWN. CONTRACTOR SHALL REVIEW PRE-LINING CCTV TO FULLY DETERMINE PIPE CONDITION.

MANHOLE REHABILITATION SCHEDULE

LOCATION	STRUCTURE ID	DEPTH (FT)	DIAMETER (INCHES)	MATERIAL
STOCKTON AVENUE	L2-SM412	2.5	48	BRICK
	L2-SM209	2	30	BRICK



REVISIONS	



CITY OF
SANTA CRUZ
PUBLIC WORKS DEPARTMENT
809 Center Street, Room 201
Santa Cruz, CA 95060

**2024 CITYWIDE SEWER/STORM
DRAIN LINING PROJECT**
STOCKTON AVENUE

REFERENCES
FIELD BOOK:

DRAWING #:

DATE	1/18/2024	SCALE	1" = 20'
DRAWN	ADH	SHEET	8 OF 10
DESIGN	CS	VAULT NO.	#9210
CHECKED	HY		

SANITARY SEWER PIPELINE LINING SCHEDULE

LOCATION	UPSTREAM STRUCTURE	DOWNSTREAM STRUCTURE	LINING LENGTH (FT)	DIAMETER (INCHES)	EXISTING MATERIAL	LATERALS - RECONNECT
ALLEGRO DRIVE	M6-SM108	M6-SM112	245	6	VCP	5
	M6-SM112	M6-SM110	251	6	VCP	6

NOTES:

1. CONTRACTOR SHALL CONFIRM PIPE MATERIAL, DIAMETER, & LENGTH
2. CONTRACTOR TO DYE TEST LATERALS INDICATED WITH "?" TO RE-OPEN OR CLOSE
3. DEFECTS LESS THAN A GRADE OF 3 ARE NOT SHOWN. CONTRACTOR SHALL REVIEW PRE-LINING CCTV TO FULLY DETERMINE PIPE CONDITION.
4. CCTV PLAN FOOTAGE RESETS AT MANHOLE M6-SM112



REVISIONS	



CITY OF
SANTA CRUZ
PUBLIC WORKS DEPARTMENT
809 Center Street, Room 201
Santa Cruz, CA 95060

**2024 CITYWIDE SEWER/STORM
DRAIN LINING PROJECT**
ALLEGRO DRIVE

REFERENCES	DATE	SCALE	1" = 40'
FIELD BOOK: #	1/22/2024	DRAWN	ADH
DRAWING #:		DESIGN	CS
		CHECKED	HY
		SHEET 9 OF 10	
		VAULT NO. #9210	

SANITARY SEWER PIPELINE LINING SCHEDULE

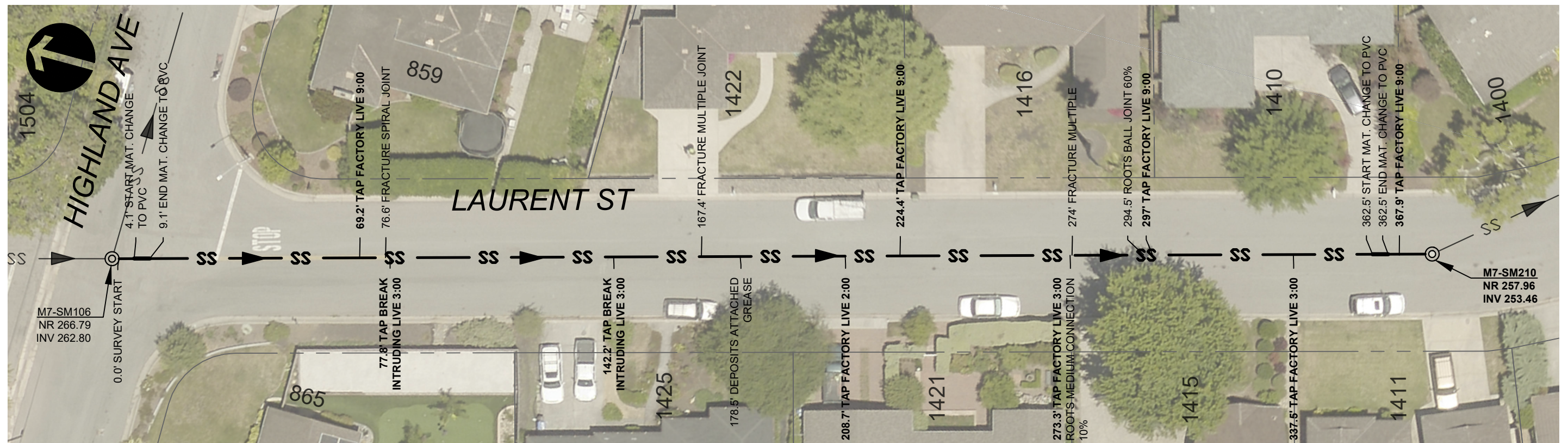
LOCATION	UPSTREAM STRUCTURE	DOWNSTREAM STRUCTURE	LINING LENGTH (FT)	DIAMETER (INCHES)	EXISTING MATERIAL	LATERALS - RECONNECT
LAURENT STREET	M7-SM106	M7-SM210	375	6	VCP	9

NOTES:

1. CONTRACTOR SHALL CONFIRM PIPE MATERIAL, DIAMETER, & LENGTH
2. CONTRACTOR TO DYE TEST LATERALS INDICATED WITH "?" TO RE-OPEN OR CLOSE
3. DEFECTS LESS THAN A GRADE OF 3 ARE NOT SHOWN. CONTRACTOR SHALL REVIEW PRE-LINING CCTV TO FULLY DETERMINE PIPE CONDITION.

MANHOLE REHABILITATION SCHEDULE

LOCATION	STRUCTURE ID	APPROXIMATE DEPTH (FT)	DIAMETER (INCHES)	MATERIAL
LAURENT STREET	M7-SM210	4	48	BRICK



REVISIONS



CITY OF
SANTA CRUZ
PUBLIC WORKS DEPARTMENT
809 Center Street, Room 201
Santa Cruz, CA 95060

**2024 CITYWIDE SEWER/STORM
DRAIN LINING PROJECT**
LAURENT STREET

REFERENCES	DATE	SCALE
FIELD BOOK: #	1/23/2024	1" = 30'
DRAWING #:	DRAWN ADH	SHEET 10 OF 10
	DESIGN CS	VAULT NO. #9210
	CHECKED HY	