

Living Shorelines, Nature-Based Solutions, and Sand Management Feasibility Study

Focus Group Meeting 2
October 1-2, 2024



Artwork by Farallon Strategies

Agenda

- Welcome and Icebreaker
- Project Approach
- Review Site Selection
- Review Proposed Evaluation Criteria
- Next Steps



Meeting Considerations + Chatham House Rules

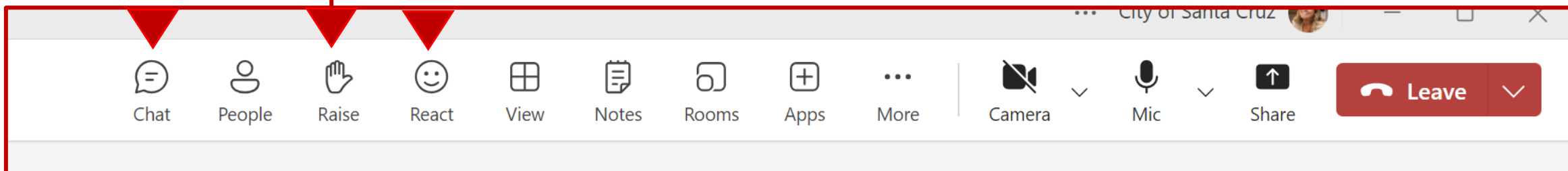
Stay present

Take space,
make space

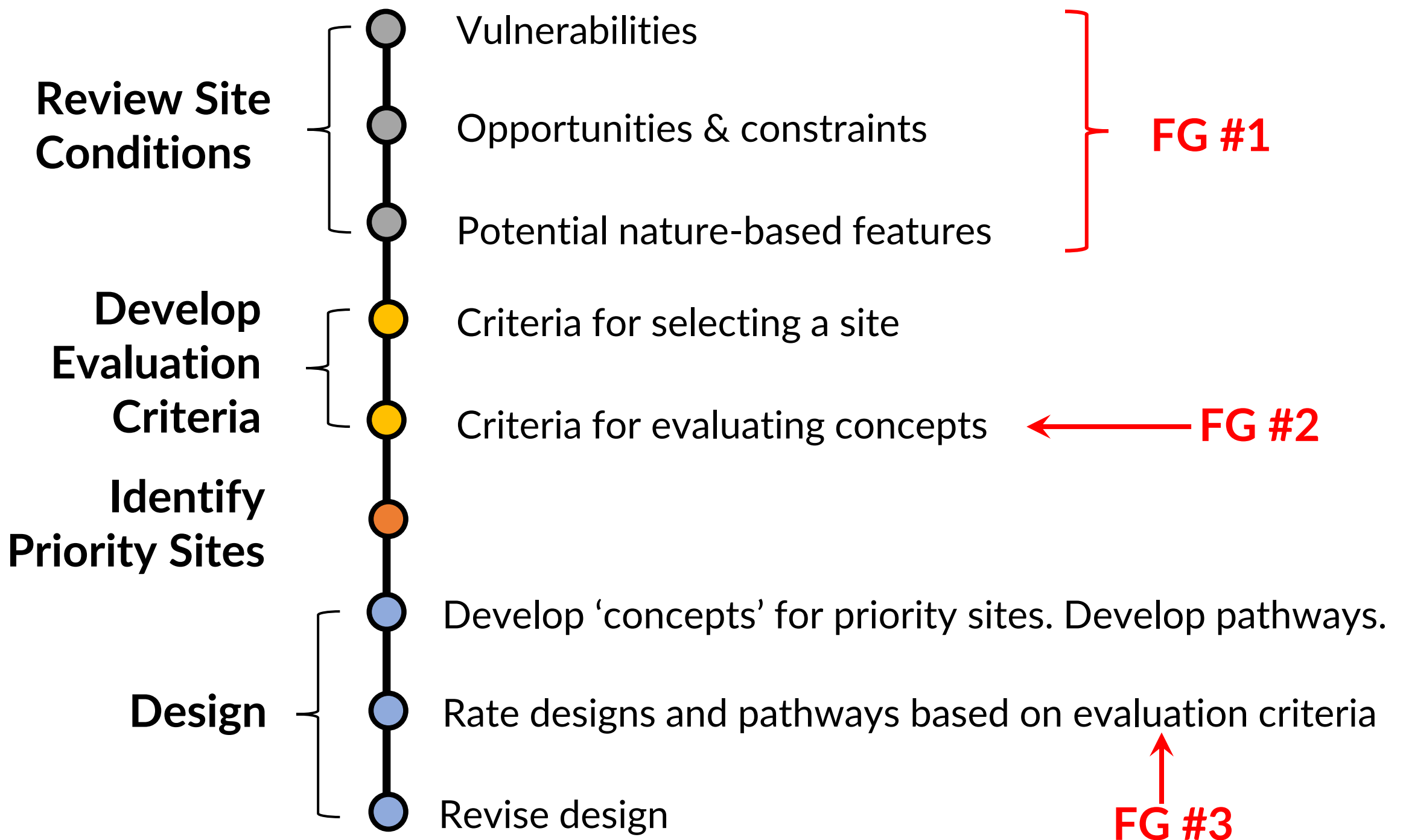
One person at a
time

Use chat/
hand raise

Question ideas,
not people



Icebreaker



Site Selection

Site Selection

- Site Vulnerability
 - Erosion
 - Coastal flooding
 - Exposure
- Viability of NBS
- Potential for Project Success



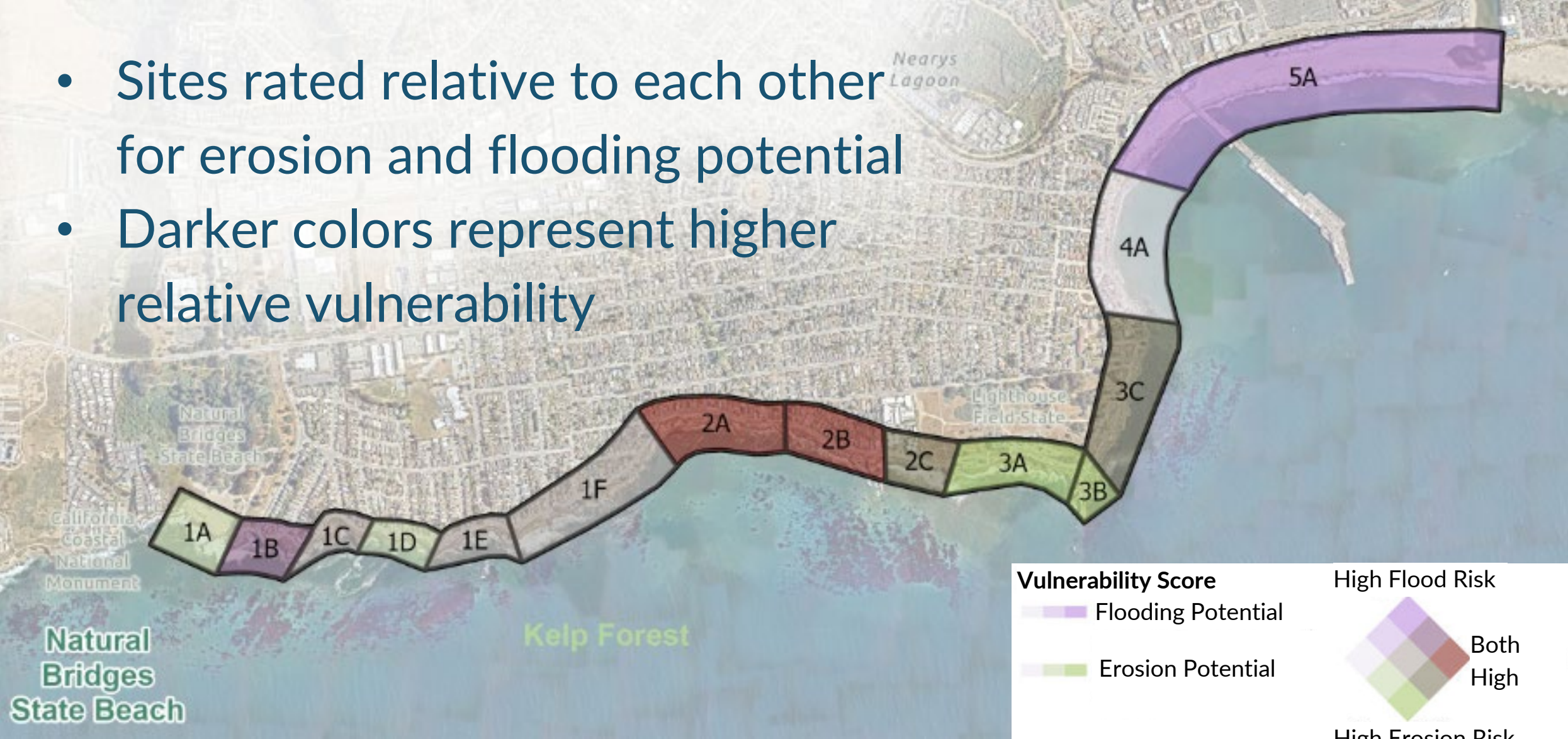
Site Selection

Consider both seasonal and long-term changes



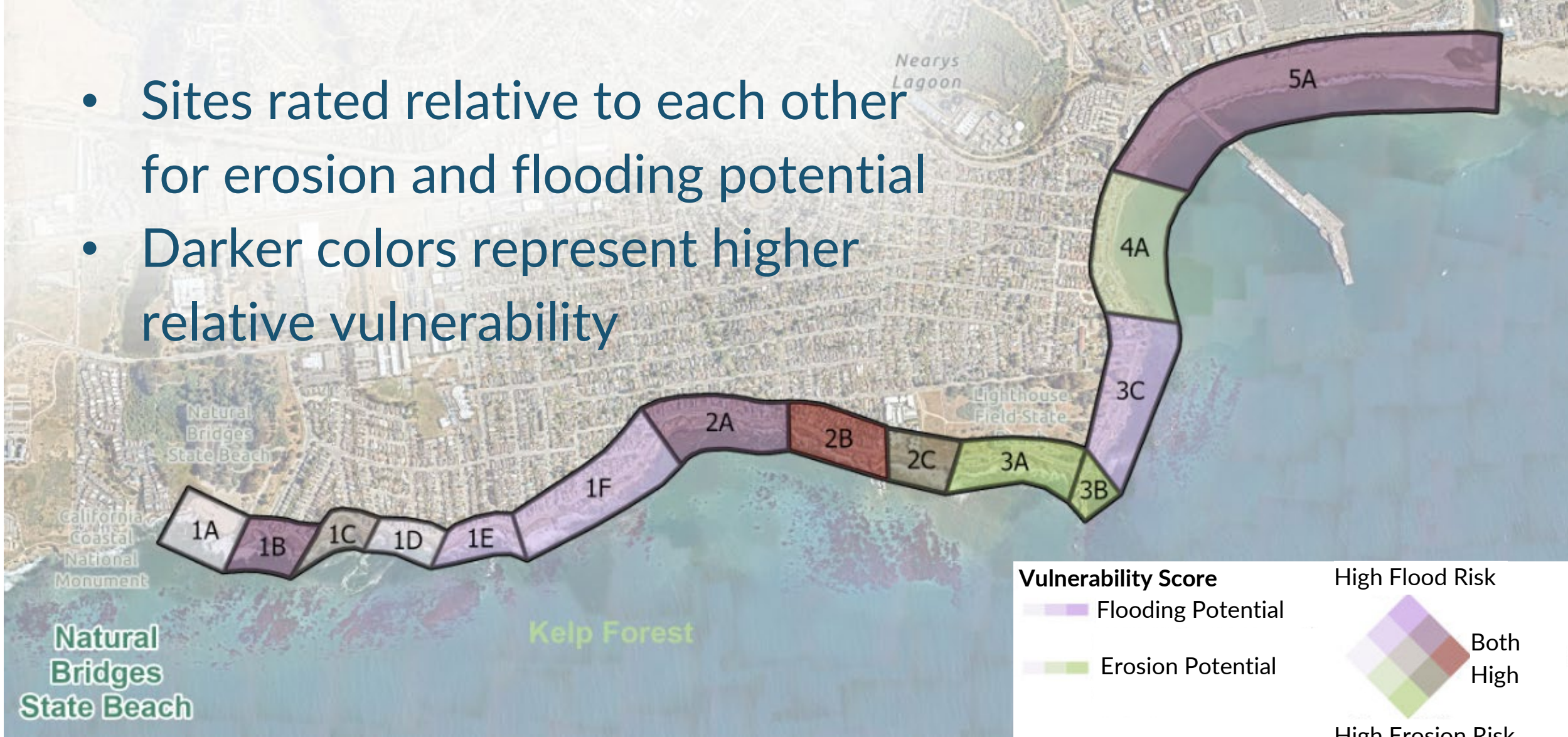
Site Selection: Vulnerability

- Sites rated relative to each other for erosion and flooding potential
- Darker colors represent higher relative vulnerability



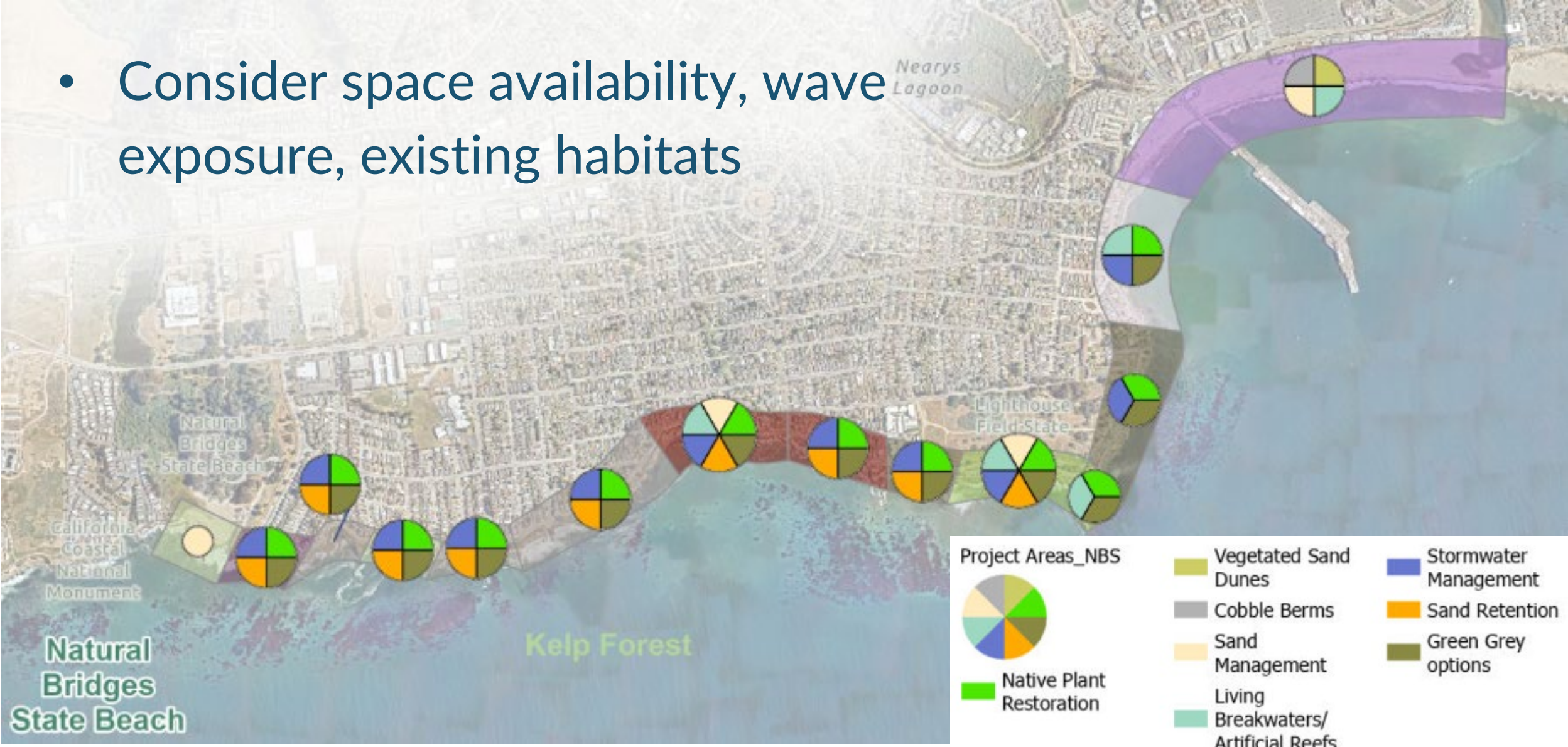
Site Selection: Vulnerability with Sea Level Rise

- Sites rated relative to each other for erosion and flooding potential
- Darker colors represent higher relative vulnerability



Site Selection: NBS Opportunities

- Consider space availability, wave exposure, existing habitats



Constraints for Site Selection



Existing residential and commercial areas



Existing habitats

Shoreline access

Existing Recreation

Potential Shortlist Sites



Clarifying questions about sites?

Group discussion and use of padlet

(20 minutes)

Site Selection Criteria

- Site Vulnerability
 - Erosion
 - Coastal flooding
 - Exposure
- Viability of NBS
- Potential for Project Success

Recommended Sites

- Mitchell Cove Area
- Lighthouse Point and Its Beach
- Cowell/Main Beach

Evaluation Criteria

Evaluation Criteria

What are evaluation criteria and how do they play a role in this project?

- Evaluation criteria are a tool for evaluating the benefits and trade-offs of different adaptation strategies.
- We developed criteria from existing City efforts and prior work.

Categories of Evaluation Criteria

Coastal
Management
and Resources

Coastal Access
and Recreation

Sense of Place
and Cultural
Identity

Ecosystems
and Habitats

Feasibility

Administrative

Technical

Cost

Ranking/ Scoring

- Qualitative ranking system to score overall performance of each strategy concept
- Rankings used:
 - Negative; Neutral; Positive
- Select concept that is most balanced across the categories not just look at the total score

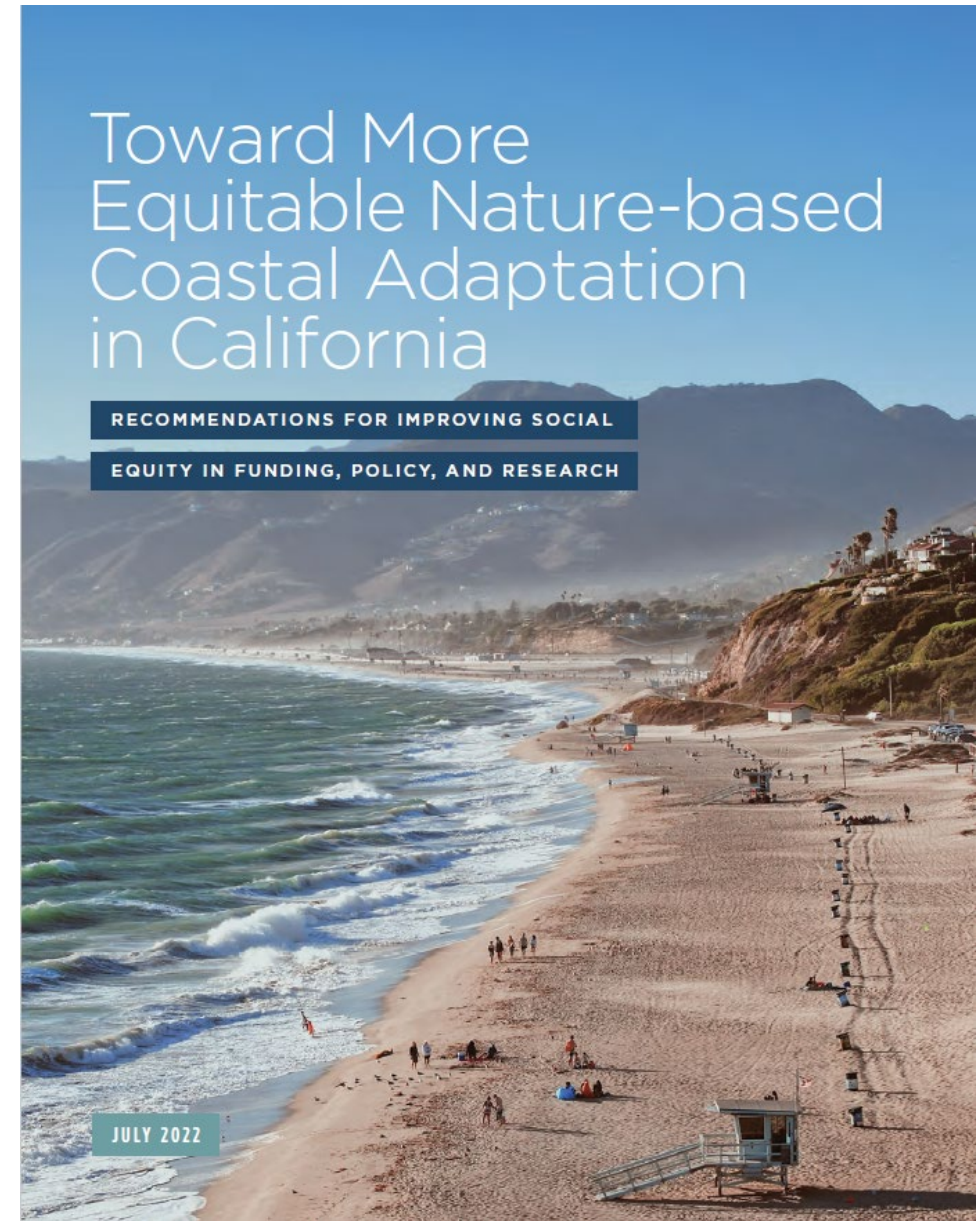


Example Scoring Mock Up

Coastal Management and Resources		Example Concept 1	Example Concept 2
Flood	How does the strategy protect against flooding during the baseline storm event?		
Erosion	How does the strategy address erosion?		
Underserved Communities	How does the strategy protect underserved communities?		
Coastal Access and Recreation			
Public Safety	How does the strategy affect safe coastal access, including for those with disabilities, the elderly, and the youth?		
Public Access	How does the strategy affect public access via bike trails?		
	How does the strategy affect public access with pedestrian paths?		
Recreation	How does the strategy affect beaches for visitor and community use?		
	How does the strategy affect surf conditions?		
Sense of Place and Cultural Identity			
Tribal Knowledge/Identity	How does strategy support tribal priorities and/or use traditional ecological knowledge (TEK)?		
Fisher Identity	How does the strategy uphold access for the fishing community?		
Waterfront Character	How does the strategy align with the existing waterfront character?		

Equity Considerations

- Reviewed guiding documents
 - City Health in All Policies
 - Ocean Science Trust 'Toward more equitable NBS'
- Specific Category
 - Sense of Place and Cultural Identity
- Integrated into other categories
 - Coastal Management & Resources
 - Coastal Access & Recreation



Coastal Management and Resources

		Negative	Neutral	Positive
Flood	How does the strategy protect against flooding during the baseline storm event?	Protects against 1-year event only	Protects against 10-year event	Protects against 100-year event
Erosion	How does the strategy address erosion?	May speed up erosion	No effect on erosion	Protects against erosion
Underserved Communities	How does the strategy protect underserved communities?	May harm underserved communities	No impact on underserved communities	Protects underserved communities

Coastal Access and Recreation

		Negative	Neutral	Positive
Public Safety	How does the strategy affect safe coastal access, including for those with disabilities, the elderly, and the youth?	Makes safe access to coastal areas worse	No change	Improves safe access to coastal areas
Public Access	How does the strategy affect public access via bike trails?	Access will get worse	No change	Access improved including for those differently-abled, the elderly and youth
	How does the strategy affect public access via pedestrian paths?	Access will get worse	No change	Access improved including for those differently-abled, the elderly and youth
Recreation	How does the strategy affect beaches for visitor and community use?	Beach width likely to decrease	Beach width is maintained	Beach width may increase
	How does the strategy affect surf conditions?	Surf conditions worsened	No impact	Surf conditions improved

Sense of Place and Cultural Identity

		Negative	Neutral	Positive
Tribal Knowledge/ Identity	How does strategy support tribal priorities and/or use traditional ecological knowledge (TEK)?	Neither supports priorities or uses TEK	Supports priorities OR uses TEK	Supports priorities AND uses TEK
Fisher Identity	How does the strategy uphold access for the fishing community?	Access for fishers decreased	No impact	Access for fishers improved
Waterfront Character	How does the strategy align with the existing waterfront character?	Does not align	Maintains status quo	Actively improves waterfront character

Ecosystems and Habitats

		Negative	Neutral	Positive
Terrestrial	How does the strategy affect terrestrial ecosystem connectivity and native habitats ?	Ecosystem connectivity and habitat lost	Ecosystem connectivity and habitat maintained	Ecosystem connectivity and habitat improved
	How does the strategy affect terrestrial biological and species diversity ?	Biological and species diversity lost	Biological and species diversity maintained	Biological and species diversity improved
Marine	How does the strategy affect marine ecosystem connectivity and native habitats ?	Ecosystem connectivity and habitat lost	Ecosystem connectivity and habitat maintained	Ecosystem connectivity and habitat improved
	How does the strategy affect marine biological and species diversity ?	Biological and species diversity lost	Biological and species diversity maintained	Biological and species diversity improved

Feasibility: Administrative

		Negative	Neutral	Positive
Existing Governance	How does the strategy fit within existing governance structures?	Fits with none	Some governance structures	All governance structures
Policy Alignment	Does the strategy align with all current policies?	Aligns with none	Some policies	All policies
Regulation and Permitting	Does the strategy align with all regulations and permitting conditions?	Aligns with none	Some regulations and permitting conditions	All regulations and permitting conditions

Feasibility: Technical

		Negative	Neutral	Positive
Material Sourcing	How available are the materials needed to construct the project?	Materials will need to be sourced from far away	Available with impacts to supply	Readily available and locally sourced
Expected Project Life	What is the expected project life of the strategy?	Less than 10 years	10 to 20 years	20 or more years

Feasibility: Costs

		Negative	Neutral	Positive
Capital Costs	What are the capital costs required with this strategy?	<i>Ranges TBD</i>		
Operations and Maintenance Costs	What are the operations and maintenance costs required with this strategy?	<i>Ranges TBD</i>		

**Clarifying questions about
evaluation criteria?**

Group discussion and use of padlet

(20 minutes)

Strategy Evaluation Criteria List

Coastal Management and Resources

- Flood
- Erosion
- Underserved Communities

Coastal Access and Recreation

- Public Safety
- Public Access
- Recreation

Sense of Place and Cultural Identity

- Tribal Knowledge/Identity
- Fisher Identity
- Waterfront Character

Ecosystems and Habitats

- Terrestrial
- Marine

Feasibility

• **Administrative**

- Existing Governance
- Policy Alignment
- Regulation and Permitting

• **Technical**

- Material Sourcing
- Expected Project Life

• **Cost**

- Capital Costs
- Operations and Maintenance Costs

Next Steps

- Finalize site selection and refine evaluation criteria prior to community meeting.
- Next Focus Group Meeting will be the first week of December. Doodle Poll will be sent out ahead of time.
- First Community Meeting is on October 21st.

Community Workshop #1

- October 21st at London Nelson Community Center, 5:30 – 7:00pm



Third Focus Group Meeting

- First week of December



Virtual Community Workshop

- December 12th place TBD

**Quick Exit Poll +
Thank you!**