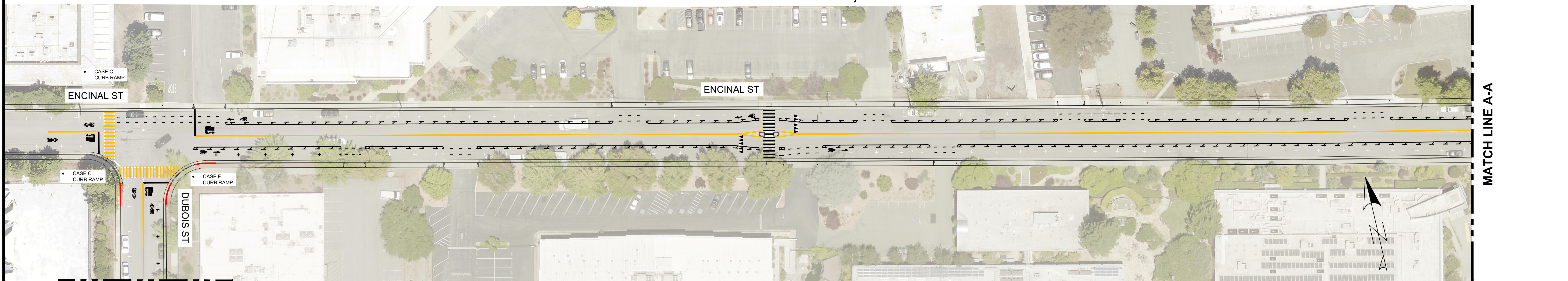
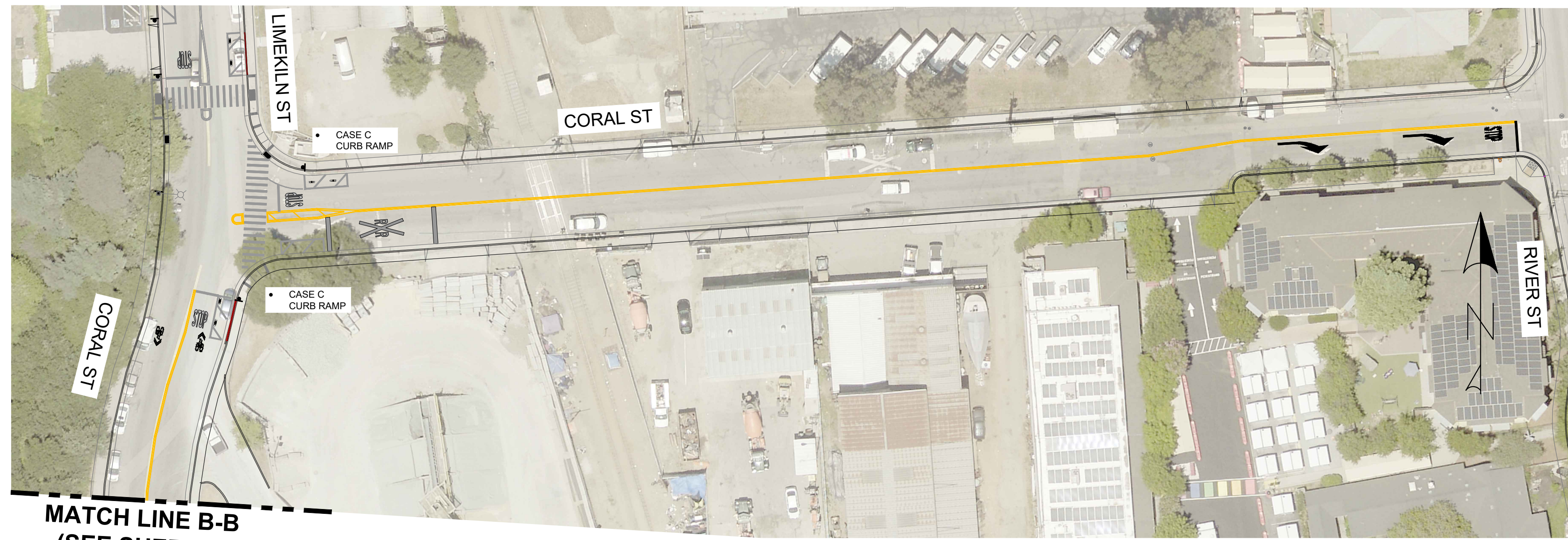
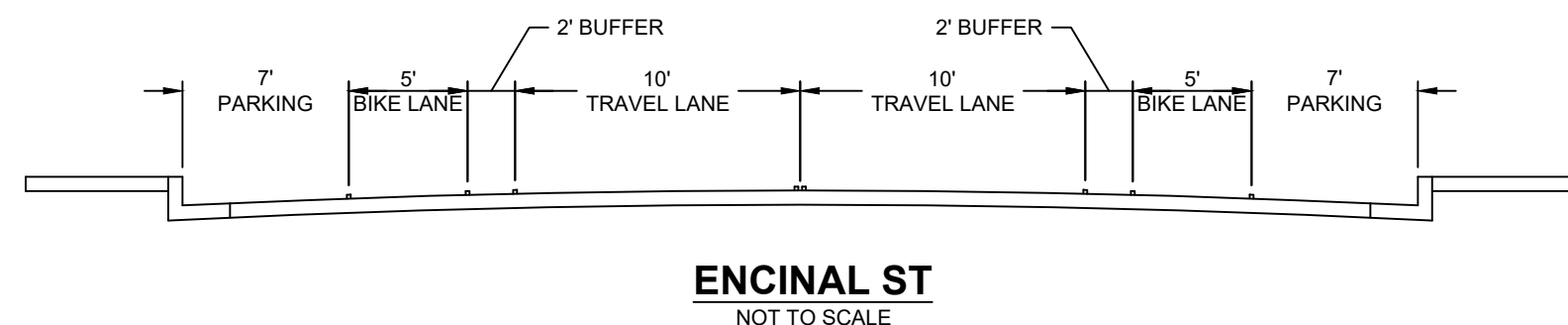


STRIPING NOTES:

- A2B: CALTRANS ARROW TYPE II (B)
- A3(L/R): CALTRANS ARROW TYPE III (LEFT/RIGHT)
- A4(L/R): CALTRANS ARROW TYPE IV (LEFT/RIGHT)
- BBL1: BUFFERED BIKE LANE 1 (INSIDE/OUTSIDE DETAIL 39 AND 6" WHITE HATCH, 45° ANGLE, 12' GAP)
- BBL2: BUFFERED BIKE LANE 2 (INSIDE DETAIL 39A, OUTSIDE DETAIL 39 AND 6" WHITE HATCH, 45° ANGLE, 12' GAP)
- BTA: BIKE AND THROUGH ARROW
- SHR: SHARROW MARKING



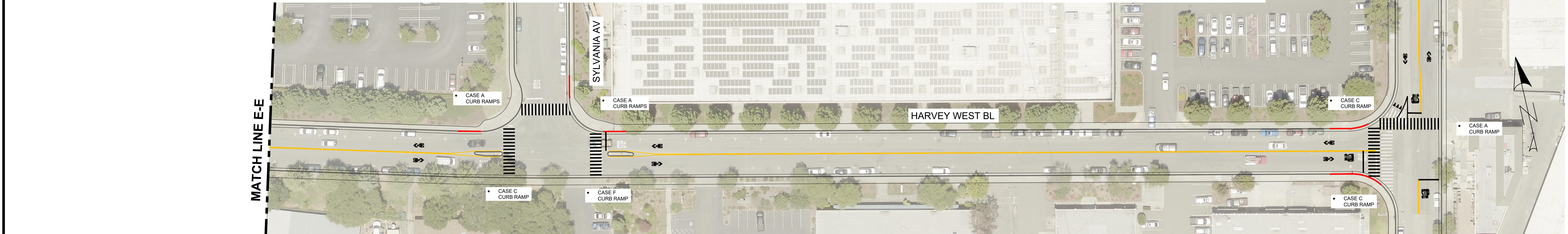
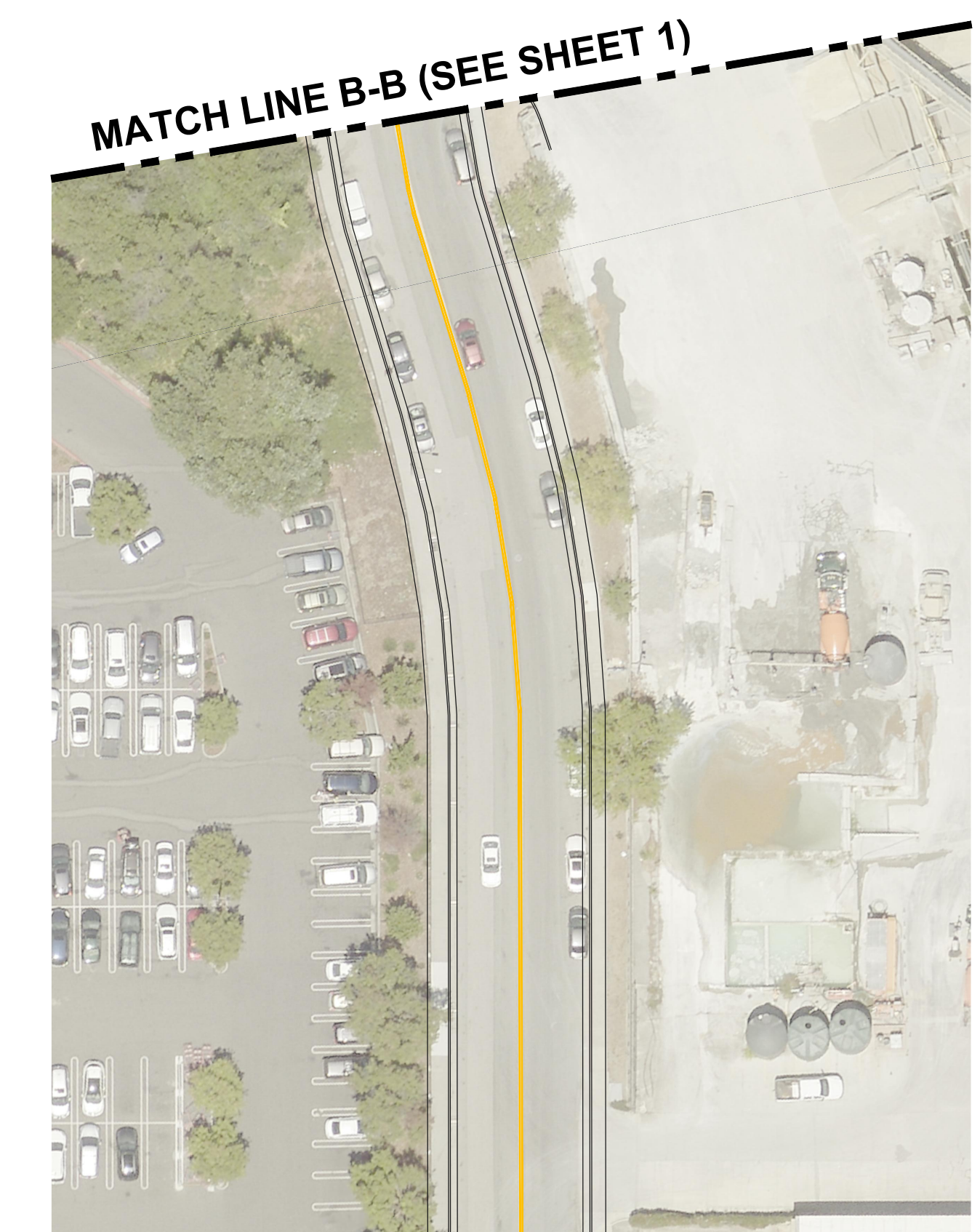
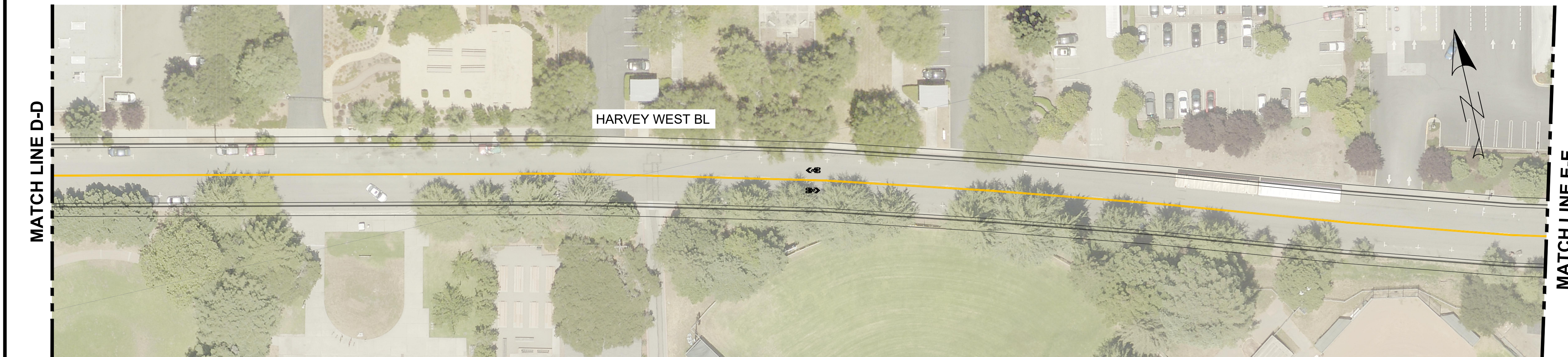
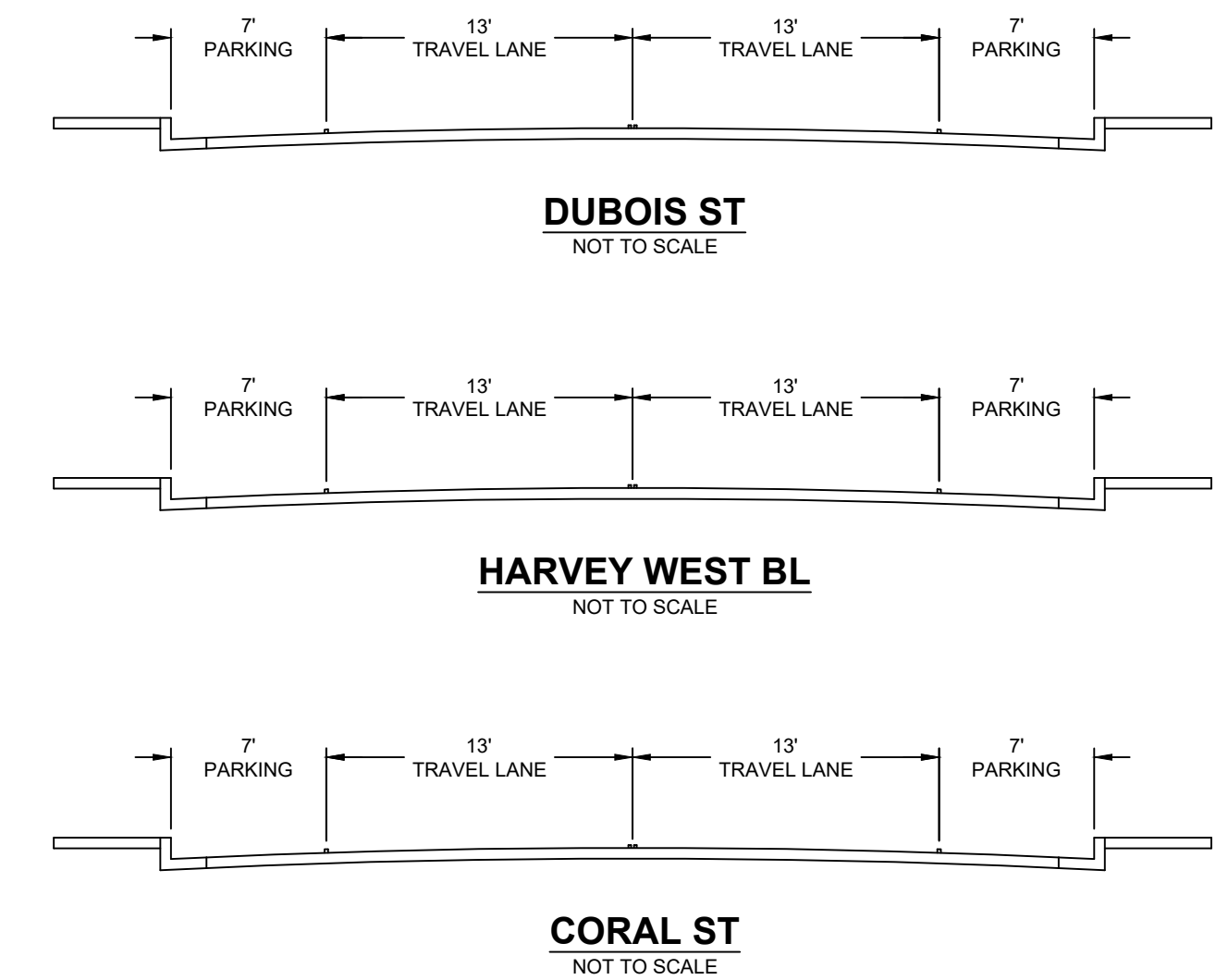
REVISIONS



CITY OF SANTA CRUZ
 PUBLIC WORKS DEPARTMENT
 809 Center Street, Room 201
 Santa Cruz, CA 95060

2025 ROAD REHABILITATION PROJECT
STRIPING PLAN
 ENCINAL ST - DUBOIS ST - HARVEY WEST - CORAL ST

REFERENCES FIELD BOOK: # DRAWING #: #	DATE	10/28/2024	SCALE	1" = 40'
	DRAWN	DnCabreros	SHEET	1 OF 2
	DESIGN	DnCabreros	VAULT NO.	#
	CHECKED	MStarkey		



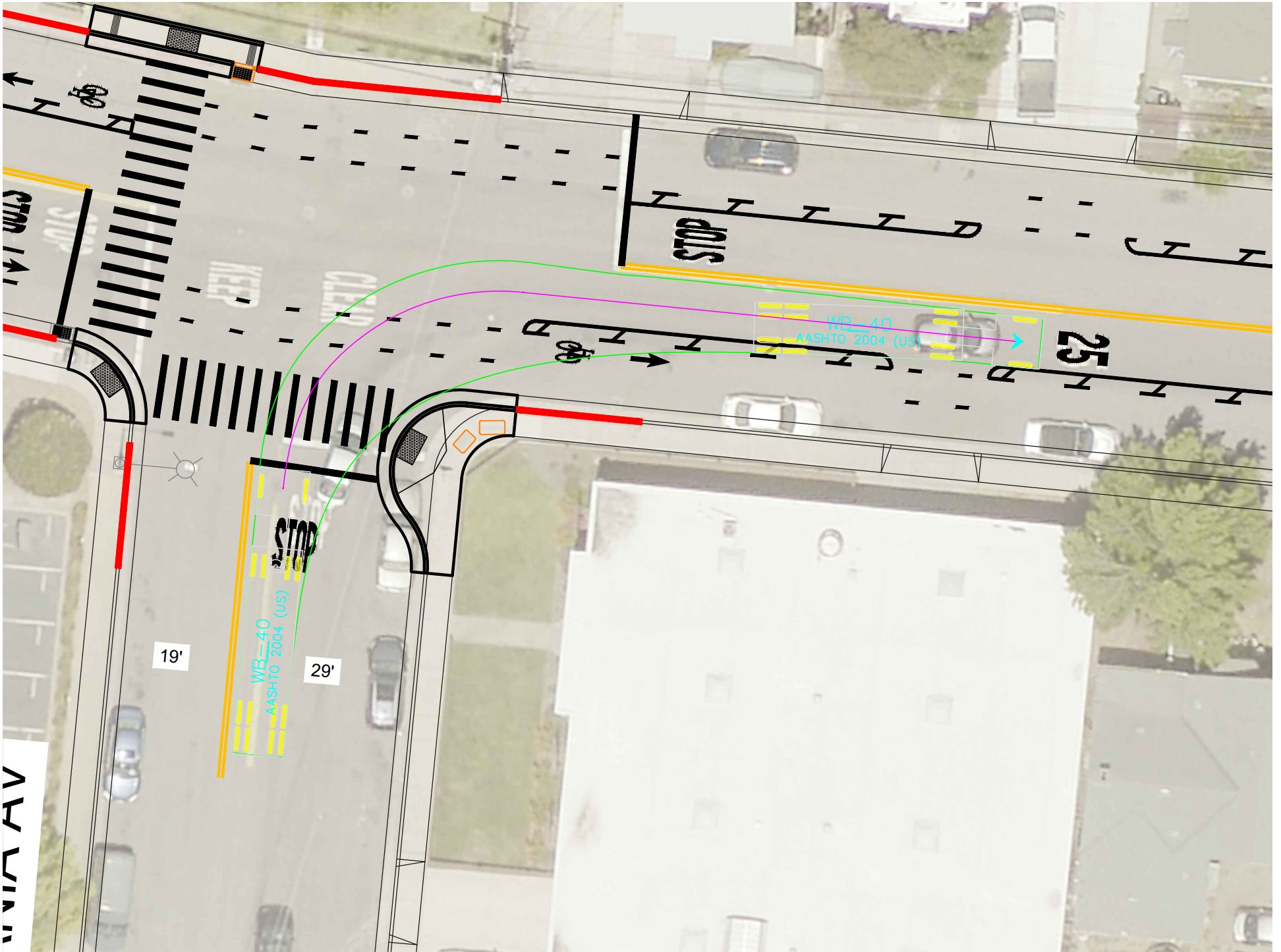
REVISIONS	



CITY OF
SANTA CRUZ
PUBLIC WORKS DEPARTMENT
809 Center Street, Room 201
Santa Cruz, CA 95060

2025 ROAD REHABILITATION PROJECT
STRIPING PLAN
ENCINAL ST - DUBOIS ST - HARVEY WEST - CORAL ST

REFERENCES FIELD BOOK: # DRAWING #: #	DATE	10/28/2024	SCALE	1" = 40'
	DRAWN	DnCaberos	SHEET	2 OF 2
	DESIGN	DnCaberos	Vault NO.	#
	CHECKED	MStarkey		



WIND AV

19'

29'

WB-40
AASHTO 2004 (US)

WB-40
AASHTO 2004 (US)

25

STOP

STOP

STOP

STOP

STOP

STOP

STOP

STOP

STOP

STOP

STOP

STOP

STOP

STOP

STOP

STOP

STOP

STOP

STOP

