

## PUBLIC SCOPING MEETINGS PLANNED FOR THE scwd<sup>2</sup> REGIONAL SEAWATER DESALINATION PROJECT

In order to accommodate both agency personnel, who typically work during daylight hours on weekdays, and the public at large, for whom evening or night meetings are typically more convenient, the City of Santa Cruz and the Soquel Creek Water District will hold two EIR scoping meetings on **Wednesday, December 8, 2010:**

First Congregational Church,  
900 High Street, Santa Cruz  
12:00 – 2:30 PM

New Brighton Middle School,  
250 Washburn Avenue, Capitola  
6:30 – 9:00 PM

Each meeting will include an open house and presentation, followed by a public comment period. The same information will be presented at each meeting.

## YOU CAN COMMENT ON THE PROJECT AND EIR

The NOP/IS contains a description of the proposed project, a discussion of possible alternative project components, maps of the proposed project areas, and a summary of the potential environmental impacts to be addressed in the EIR. The NOP provides the public and interested public agencies the opportunity to review the proposed project and provide comments on the scope and content of the EIR. Comments may be submitted at the public scoping meetings or by mail or email anytime between November 15, 2010 and January 10, 2011. Please submit comments on the proposed project to:

Heidi Luckenbach  
scwd<sup>2</sup> Desalination Program Coordinator  
City of Santa Cruz, Water Department  
212 Locust Street, Suite C  
Santa Cruz, CA 95060  
Email: hluckenbach@cityofsantacruz.com

**Comments must be received by 5:00 p.m. on Monday, January 10, 2011.**



212 Locust Street, Suite C  
Santa Cruz, CA 95060  
www.scwd2desal.org



printed on recycled paper



## NOTICE OF AVAILABILITY OF NOTICE OF PREPARATION (NOP) OF AN ENVIRONMENTAL IMPACT REPORT TO ALL INTERESTED PARTIES:

### PROPOSED PROJECT IN YOUR AREA

The City of Santa Cruz (City) and the Soquel Creek Water District (District) have partnered to implement the scwd<sup>2</sup> Desalination Program. The City of Santa Cruz and Soquel Creek Water District (scwd<sup>2</sup>) Regional Seawater Desalination Project (proposed project) would be located in the greater Santa Cruz area and would provide up to 2.5 million gallons per day (mgd) of potable drinking water. This water would help the District meet its water needs as it reduces its groundwater withdrawals of the overdrafted Soquel-Aptos area to prevent seawater intrusion and would help the City meet the water needs of its service area during drought periods.

The City and the District are the joint Lead Agencies for this project and will prepare an Environmental Impact Report (EIR) under the California Environmental Quality Act (CEQA) on the project described herein. These agencies have issued a Notice of Preparation (NOP) pursuant to CEQA to notify all interested parties that it will be preparing an EIR to evaluate the potential environmental impacts of the proposed project. The proposed project would consist of the following project components:

- A seawater intake structure, associated pump station, and conveyance piping, of which there would be offshore and onshore components that would likely be located between Mitchell's Cove Beach and Seabright Beach.

- A seawater desalination plant located on the west side of the City of Santa Cruz that would provide for pretreatment filtration, seawater reverse osmosis, post-treatment conditioning and disinfection, and solids handling processes and their associated support facilities.
- Brine disposal and conveyance system that would deliver brine generated at the plant to the City's WWTP outfall.
- A water supply delivery system that would deliver the potable desalinated water into the City's water supply system and provide water to the District.

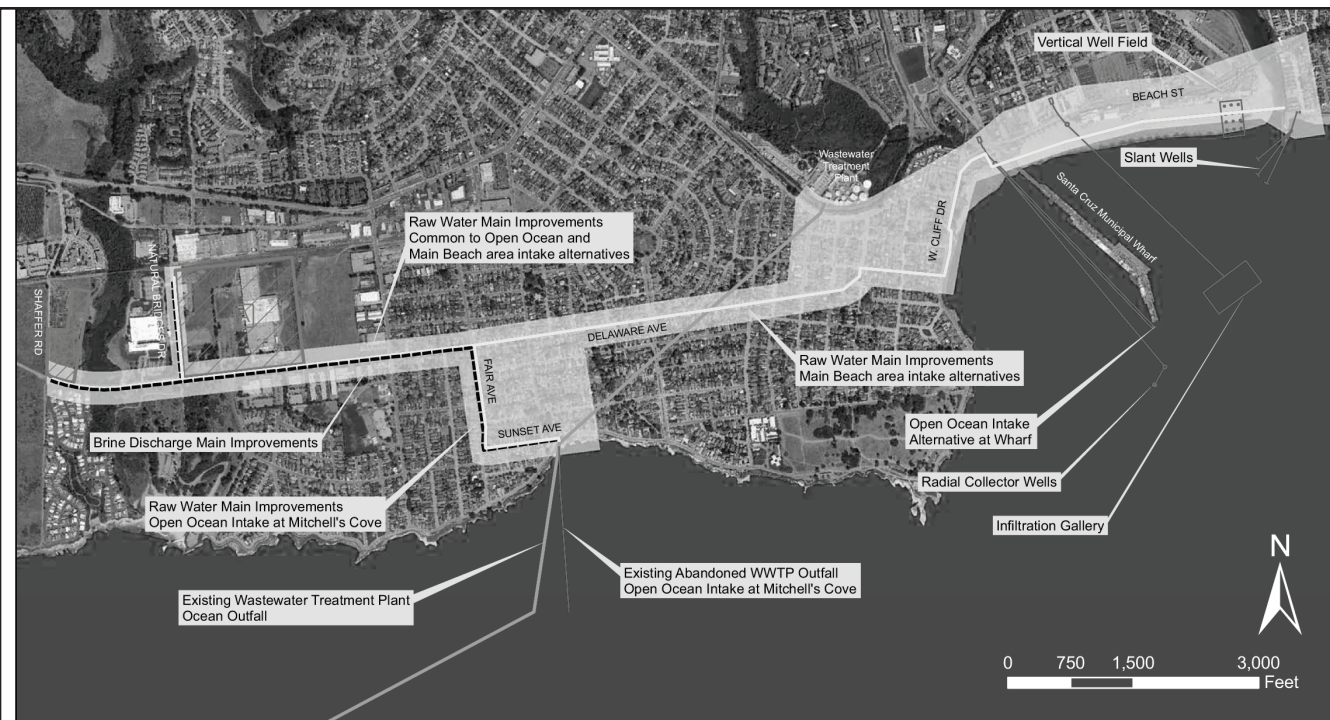
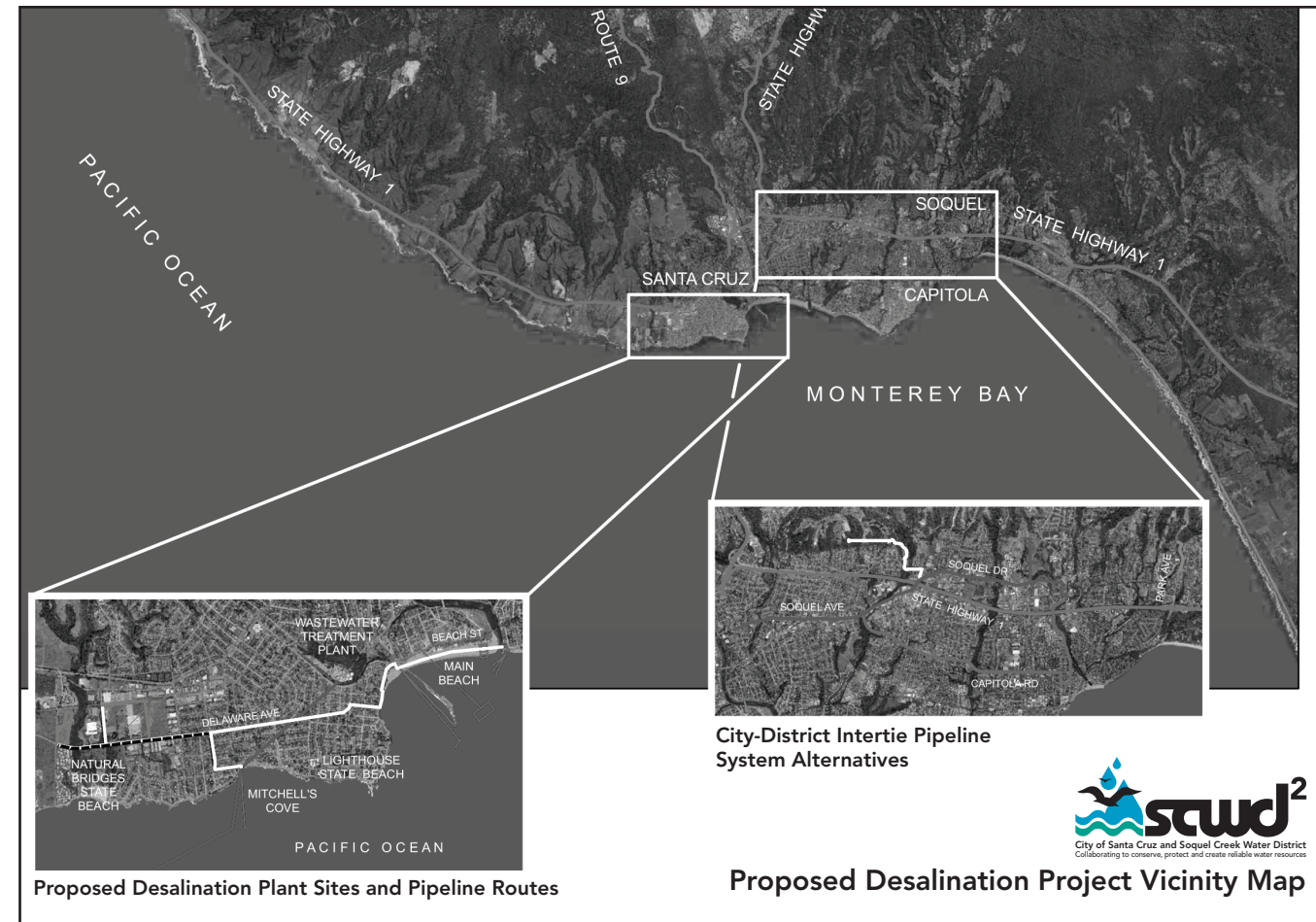
The potential environmental impacts of the proposed project include: aesthetics, air quality, biological resources, cultural resources, geology and soils, greenhouse gas emissions, hazards, hydrology and water quality, land use and planning, noise, transportation, wastewater and solid waste, and growth. These potential impacts are discussed in greater detail in the NOP and Initial Study (IS). Copies of the NOP/IS are available for public review on the project website, at the Santa Cruz City and County libraries listed and at the public scoping meetings described on this notice. (See other locations on page 2.)

For more information or to request special accommodations or translation services please contact Melanie Mow Schumacher, scwd<sup>2</sup> Public Outreach Coordinator, at (831) 475-8501 x 153, email [melanies@soquelcreekwater.org](mailto:melanies@soquelcreekwater.org), or visit the project website at [www.scwd2desal.org](http://www.scwd2desal.org).

## HERE'S HOW TO LEARN MORE

Copies of the NOP/IS are available for public review and comment at the following locations:

- Project website at [www.scwd2desal.org](http://www.scwd2desal.org)
- Central Branch, 224 Church Street, Santa Cruz, 831-420-5700
- Branciforte Branch, 230 Gault Street, Santa Cruz, 831-427-7704
- Garfield Park Branch, 705 Woodrow Avenue, Santa Cruz, 831-427-7709
- Live Oak Branch, 2380 Portola Drive, Santa Cruz, 831-427-7711
- Capitola Branch, 2005 Wharf Road, Capitola, 831-427-7705
- Aptos Branch, 7695 Soquel Drive, Aptos, 831-427-7702
- Porter Memorial Library, 3050 Porter Street, Soquel, 831-475-3326
- La Selva Branch, 316 Estrella Avenue, LSB, 831-420-5349
- Santa Cruz Planning and Community Development Department, 809 Center Street Room 107, Santa Cruz, CA
- City of Santa Cruz, City Clerk, 809 Center Street Room 9, Santa Cruz, CA
- City of Santa Cruz Water Department, 212 Locust St., Suite C, Santa Cruz, CA
- Santa Cruz County Clerk's Office: 701 Ocean St., Room 210, Santa Cruz, CA
- Soquel Creek Water District Office, 5180 Soquel Drive, Soquel, CA

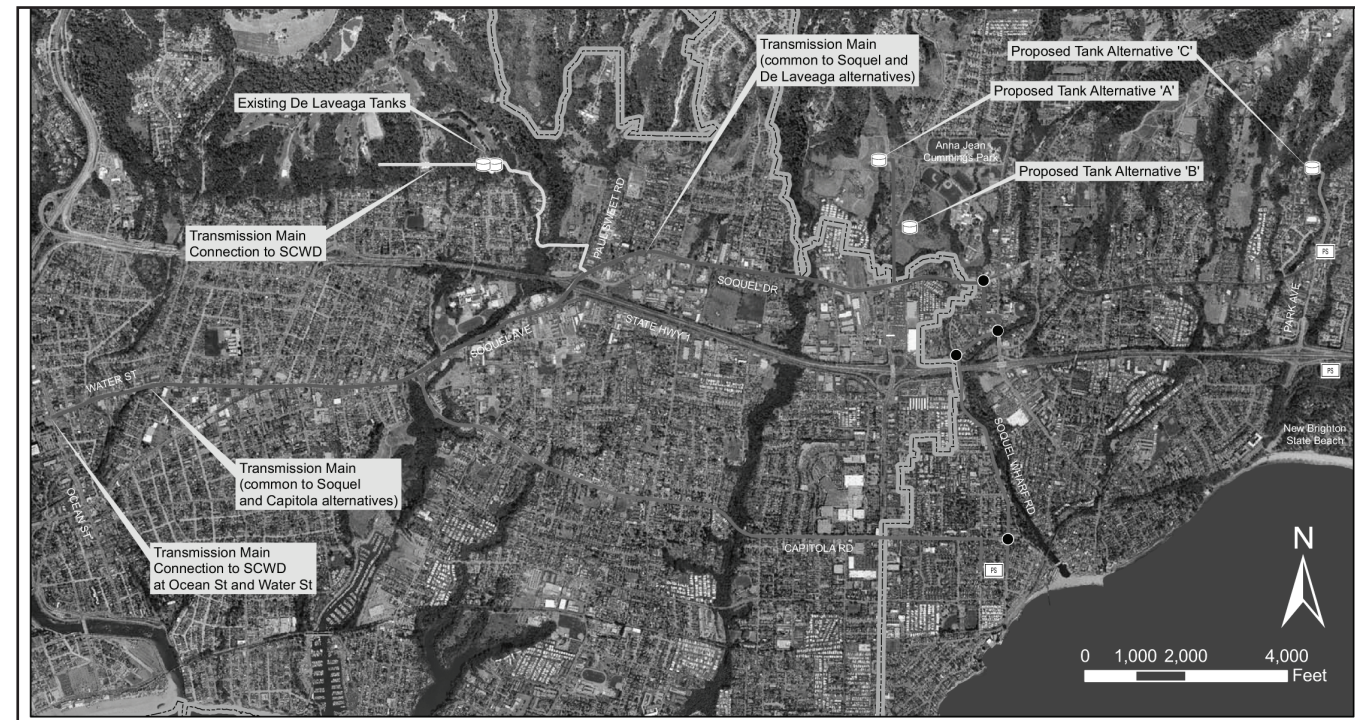


### Legend

- Proposed Brine Discharge Main
- Proposed Raw Water Main
- Existing Sewer Main
- Proposed Intake Alternatives
- ▨ Proposed Desalination Plant Sites Still Under Consideration
- ▭ Proposed Pipeline Corridor



**Proposed Desalination Plant Sites and Pipeline Routes**



### Legend

- Treated Water Alignment - Capitola Route
- Treated Water Alignment - De Laveaga Route
- Treated Water Alignment - Soquel Route
- Treated Water Alignment - McGregor Pump Station
- ▭ Santa Cruz Water Service Area Boundary
- Point of Connection to SqCWD
- ▭ Pump Station
- Storage Tank



**City-District Intertie Pipeline System Alternatives**