

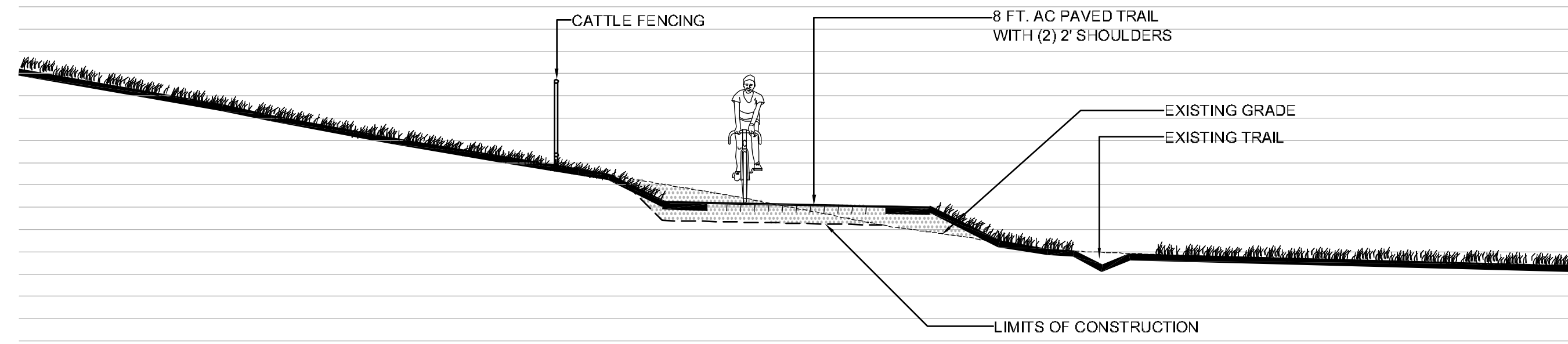
TRAIL COMPARISON TABLE
CITY ALIGNMENT/CNPS ALIGNMENT*

STATISTICS	CITY OF SANTA CRUZ	CNPS
Multi Purpose Trails		
Length	1,194 Lineal feet	1,841 Lineal feet
Width	8' Paved trail + (2) 2' shoulder	8' Paved trail + (2) 2' shoulder
Max. height above existing grade	At grade	7 feet high
Construction impact zone	15,804 sqft.	32,064 sqft.
Tree removal	1 tree	11 trees
Prairie habitat removal	0 sqft.	3,000 sqft.
Cut/Fill		
Net cubic yards	441 CY (Cut)	736 CY (Cut)
Max. depth of excavation	2 ft.	7 ft.
Retaining Walls With Guard Rails		
Length	0 ft.	1,030 ft.
Max. height	0 ft.	11 ft.
Quantity	No walls	7 walls
Storm Drainage		
Length of pipe	0 lineal ft.	160 lineal ft.
Length of earthen swale	0 lineal ft.	910 lineal ft.
No. of structures	none	24

LEGEND

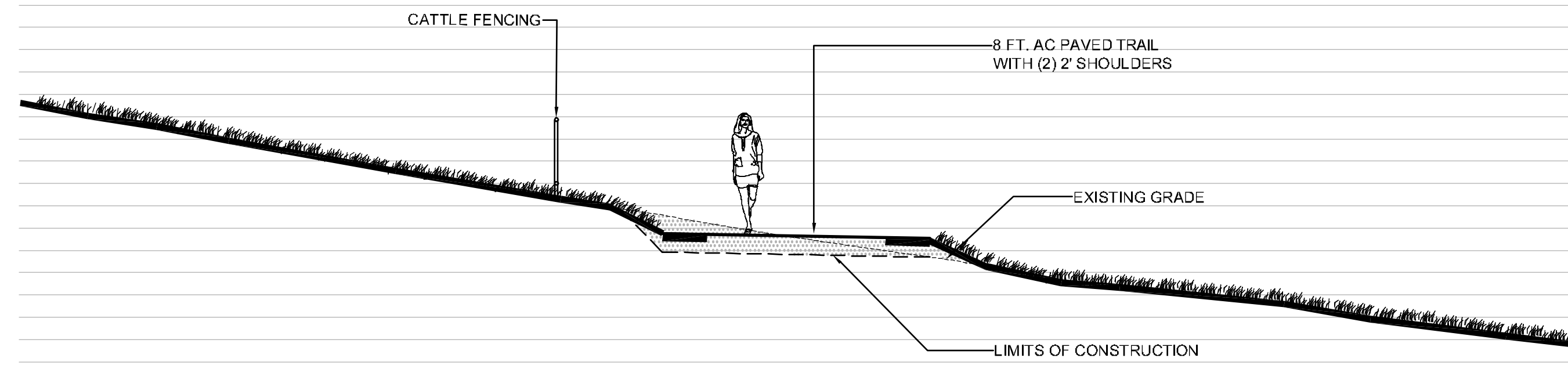
SYMBOL	DESCRIPTION
[Orange line]	1989 Tarplant Zone
[Light Green line]	1995-1998 Tarplant Zone
[Green line]	1998 Tarplant Zone
[Yellow-Green line]	1999-2001 Tarplant Zone
[Purple line]	2002-2003 Tarplant Zone
[Orange line]	2004 Tarplant Zone
[Light Green line]	2005 Tarplant Zone
[Blue line]	2006 Tarplant Zone
[Grey line]	2007 Tarplant Zone
[Dark Purple line]	2008 Tarplant Zone
[Red line]	2009 Tarplant Zone
[Grey box]	Prairie Habitat Zone

SECTIONS A1 THROUGH G1 CORRESPOND WITH THE BORING HOLE LOCATIONS IDENTIFIED IN SUBSURFACE DRAINAGE INVESTIGATION REPORT PREPARED BY CHG, DATED JUNE 15, 2010. THESE SECTIONS INCLUDE THE CORRESPONDING LABELS.



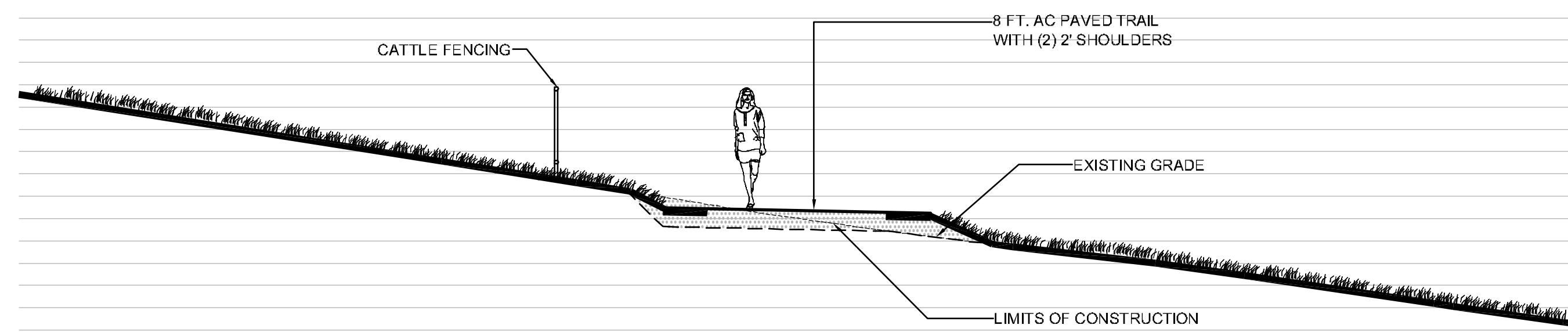
SECTION A1

NOTE: THIS SECTION CORRESPONDS WITH THE BORING HOLE LOCATION HA-7 IDENTIFIED IN SUBSURFACE DRAINAGE INVESTIGATION REPORT PREPARED BY CHG, DATED JUNE 1, 2010.



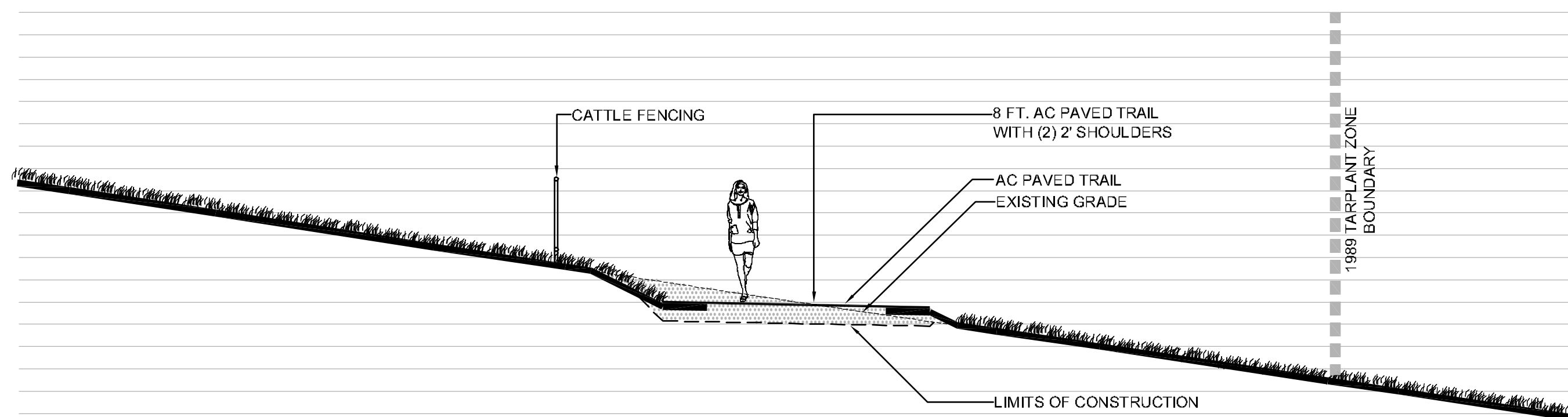
SECTION B1

NOTE: THIS SECTION CORRESPONDS WITH THE BORING HOLE LOCATION HA-1 IDENTIFIED IN SUBSURFACE DRAINAGE INVESTIGATION REPORT PREPARED BY CHG, DATED JUNE 1, 2010.



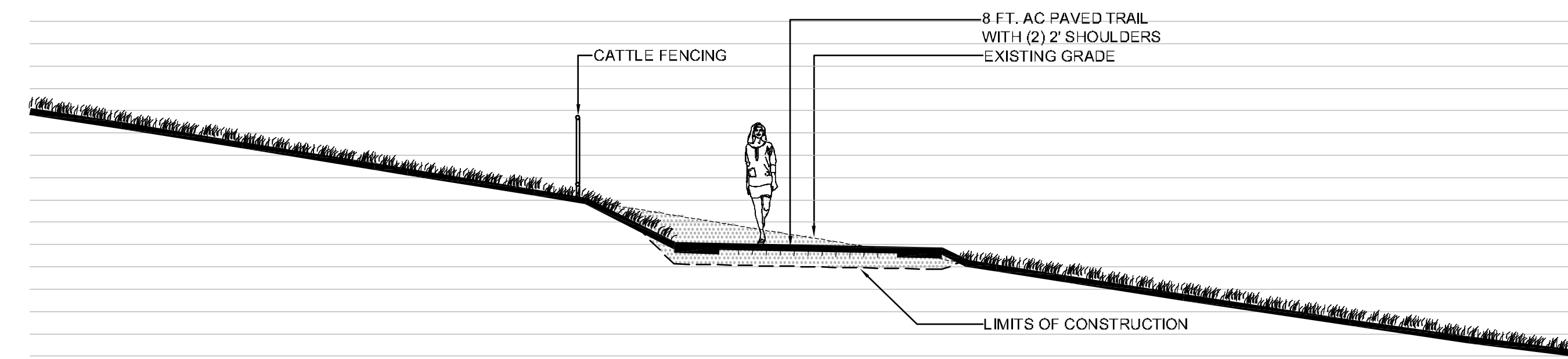
SECTION C1

NOTE: THIS SECTION CORRESPONDS WITH THE BORING HOLE LOCATION HA-2 IDENTIFIED IN SUBSURFACE DRAINAGE INVESTIGATION REPORT PREPARED BY CHG, DATED JUNE 1, 2010.



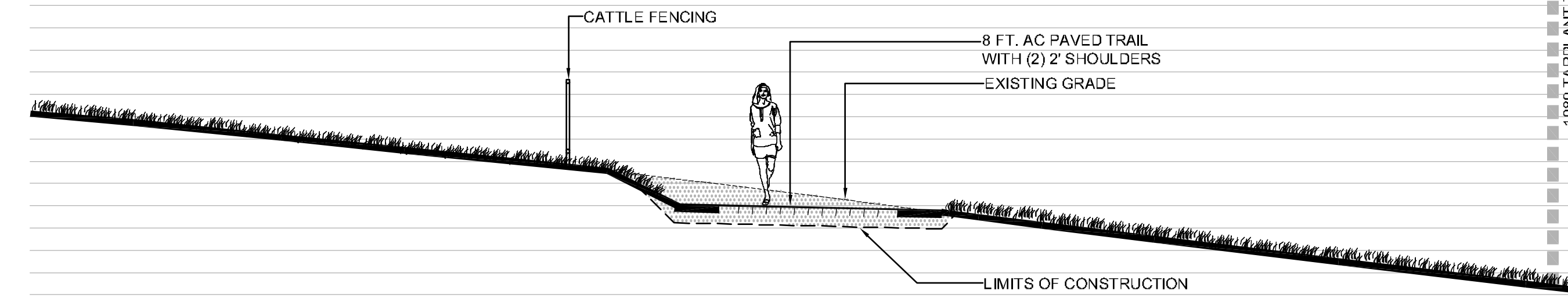
SECTION D1

NOTE: THIS SECTION CORRESPONDS WITH THE BORING HOLE LOCATION HA-3 IDENTIFIED IN SUBSURFACE DRAINAGE INVESTIGATION REPORT PREPARED BY CHG, DATED JUNE 1, 2010.



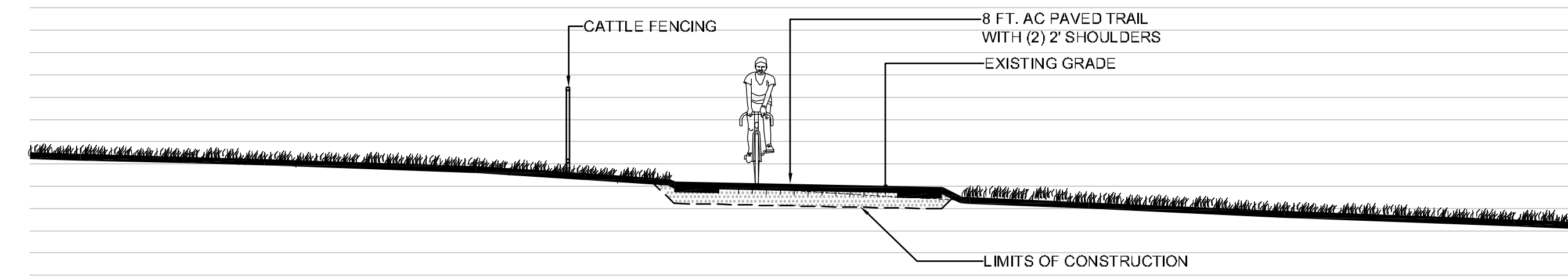
SECTION E1

NOTE: THIS SECTION CORRESPONDS WITH THE BORING HOLE LOCATION HA-4 IDENTIFIED IN SUBSURFACE DRAINAGE INVESTIGATION REPORT PREPARED BY CHG, DATED JUNE 1, 2010.



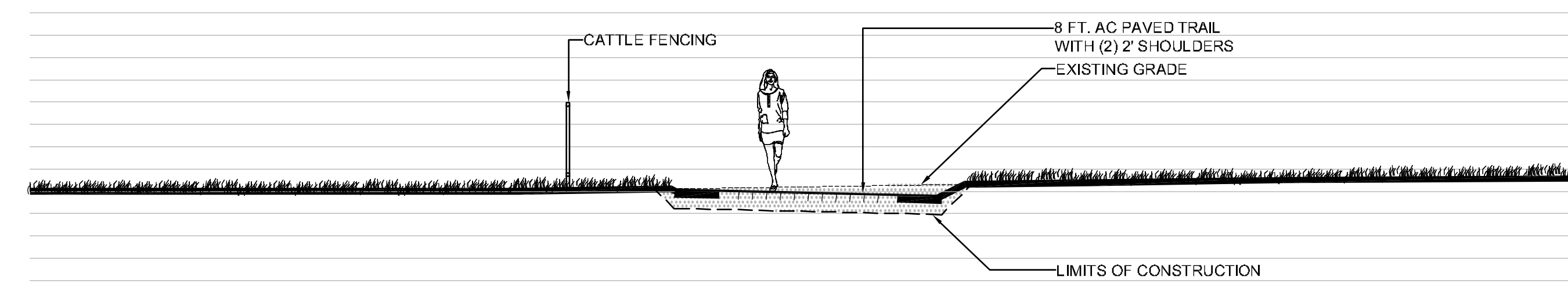
SECTION F1

NOTE: THIS SECTION CORRESPONDS WITH THE BORING HOLE LOCATION HA-5 IDENTIFIED IN SUBSURFACE DRAINAGE INVESTIGATION REPORT PREPARED BY CHG, DATED JUNE 1, 2010.

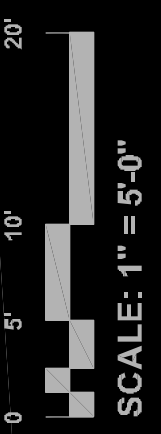


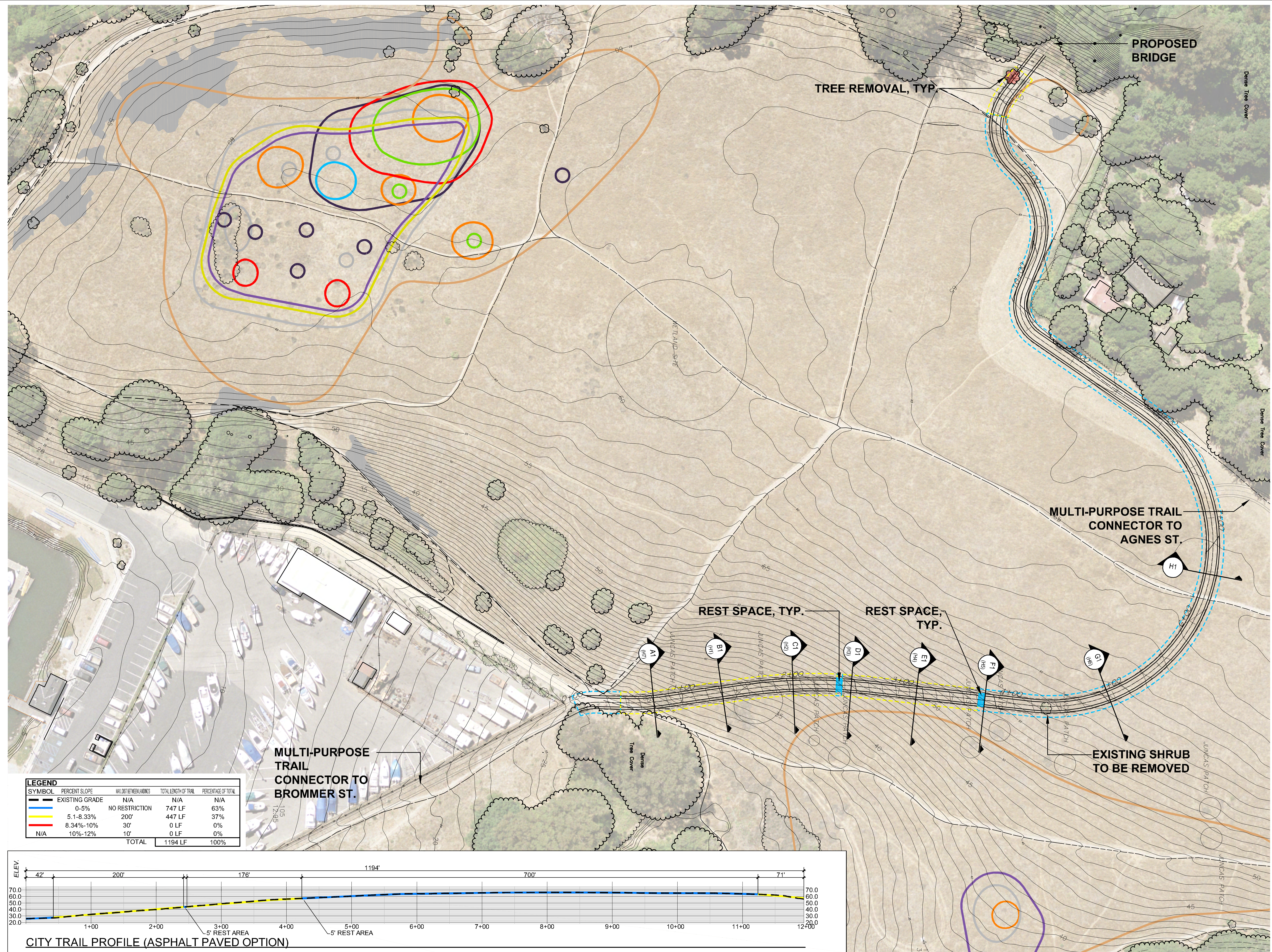
SECTION G1

NOTE: THIS SECTION CORRESPONDS WITH THE BORING HOLE LOCATION HA-6 IDENTIFIED IN SUBSURFACE DRAINAGE INVESTIGATION REPORT PREPARED BY CHG, DATED JUNE 1, 2010.



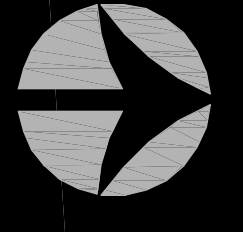
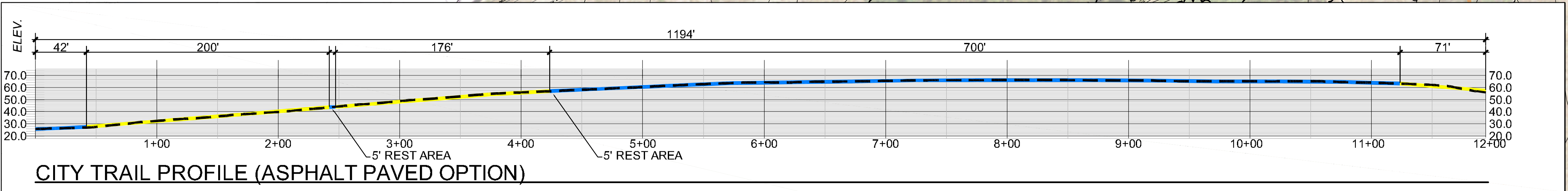
SECTION H1

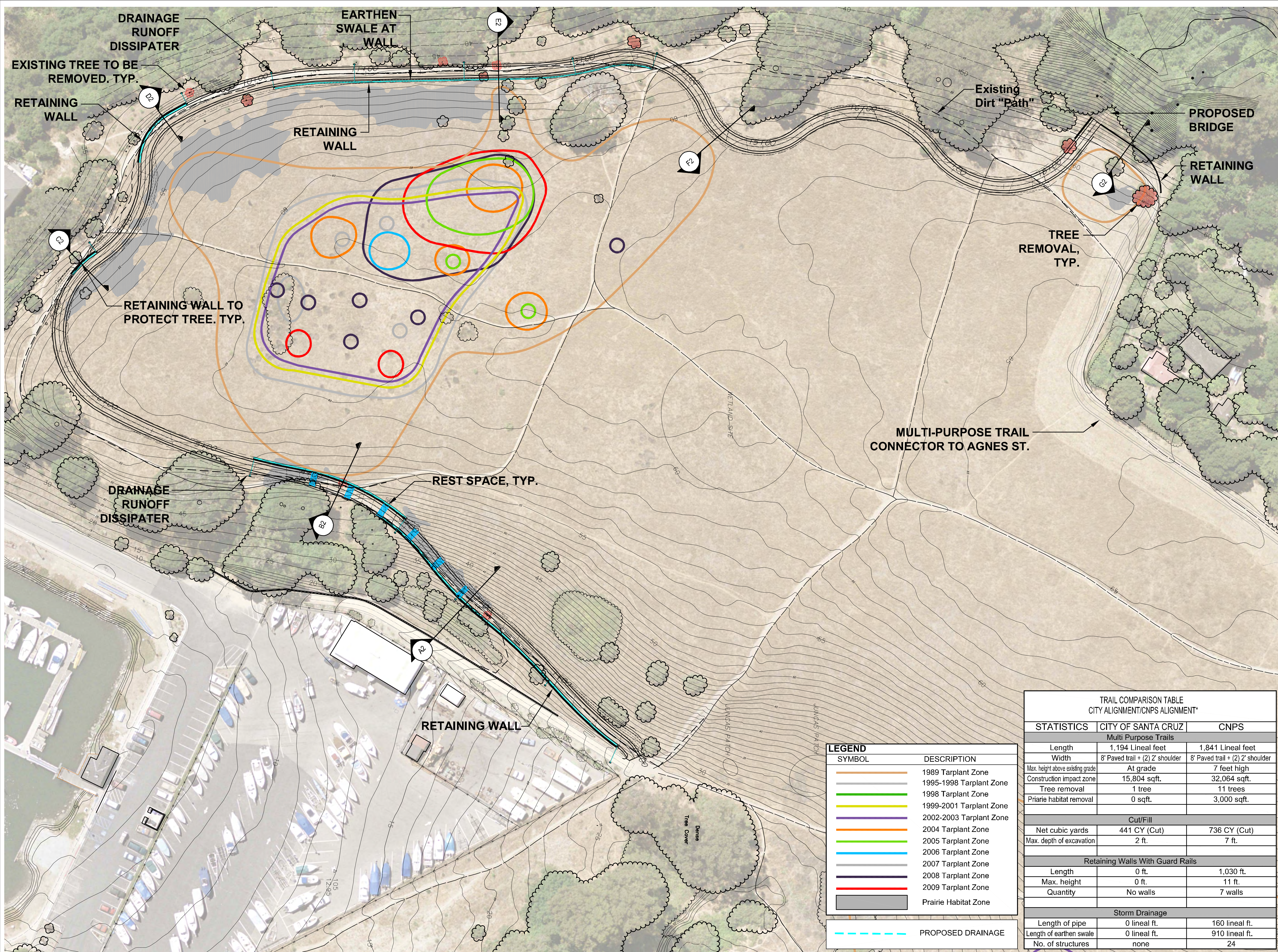




LEGEND

SYMBOL	PERCENT SLOPE	MAX. DIST. BETWEEN LINES	TOTAL LENGTH OF TRAIL	PERCENTAGE OF TOTAL
—	EXISTING GRADE	N/A	N/A	N/A
—	0-5%	NO RESTRICTION	747 LF	63%
—	5.1-8.33%	200'	447 LF	37%
—	8.34-10%	30'	0 LF	0%
—	10%-12%	10'	0 LF	0%
	TOTAL		1194 LF	100%



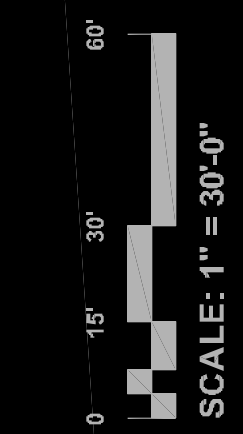
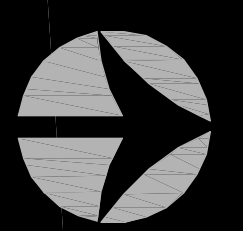


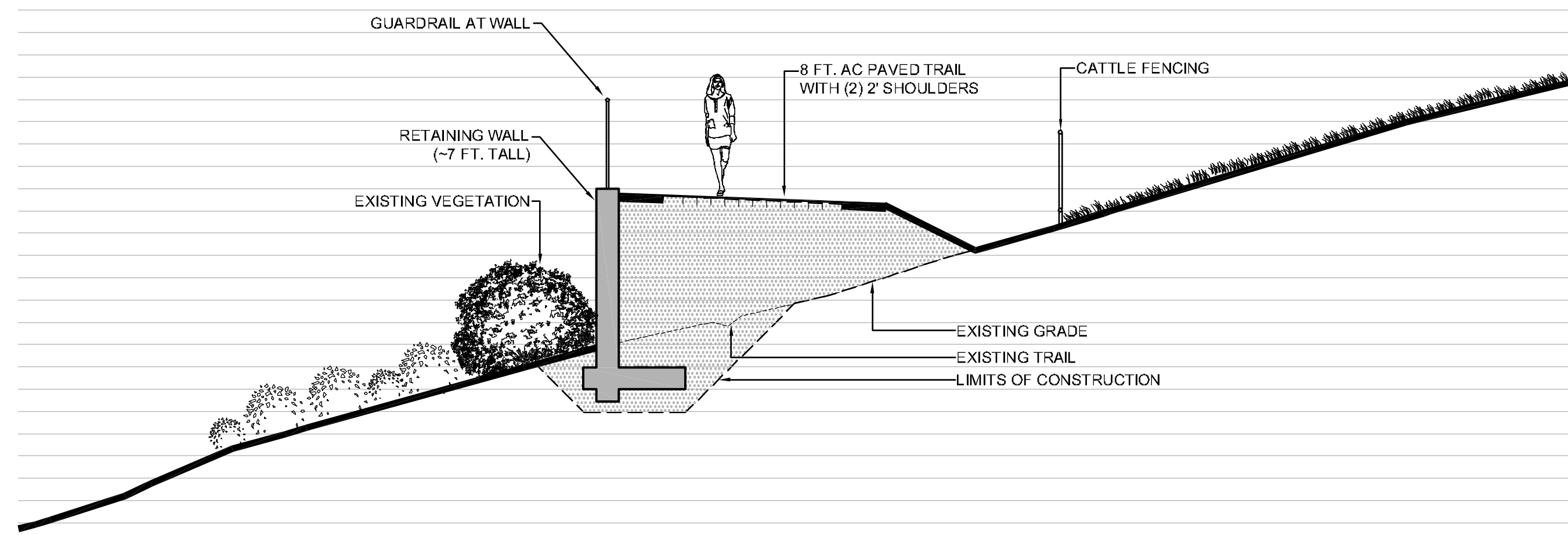
LEGEND

SYMBOL	DESCRIPTION
[Orange line]	1989 Tarplant Zone
[Light Green line]	1995-1998 Tarplant Zone
[Green line]	1998 Tarplant Zone
[Yellow line]	1999-2001 Tarplant Zone
[Purple line]	2002-2003 Tarplant Zone
[Red line]	2004 Tarplant Zone
[Light Blue line]	2005 Tarplant Zone
[Blue line]	2006 Tarplant Zone
[Dark Blue line]	2007 Tarplant Zone
[Black line]	2008 Tarplant Zone
[Red line]	2009 Tarplant Zone
[Grey area]	Prairie Habitat Zone
[Dashed blue line]	PROPOSED DRAINAGE

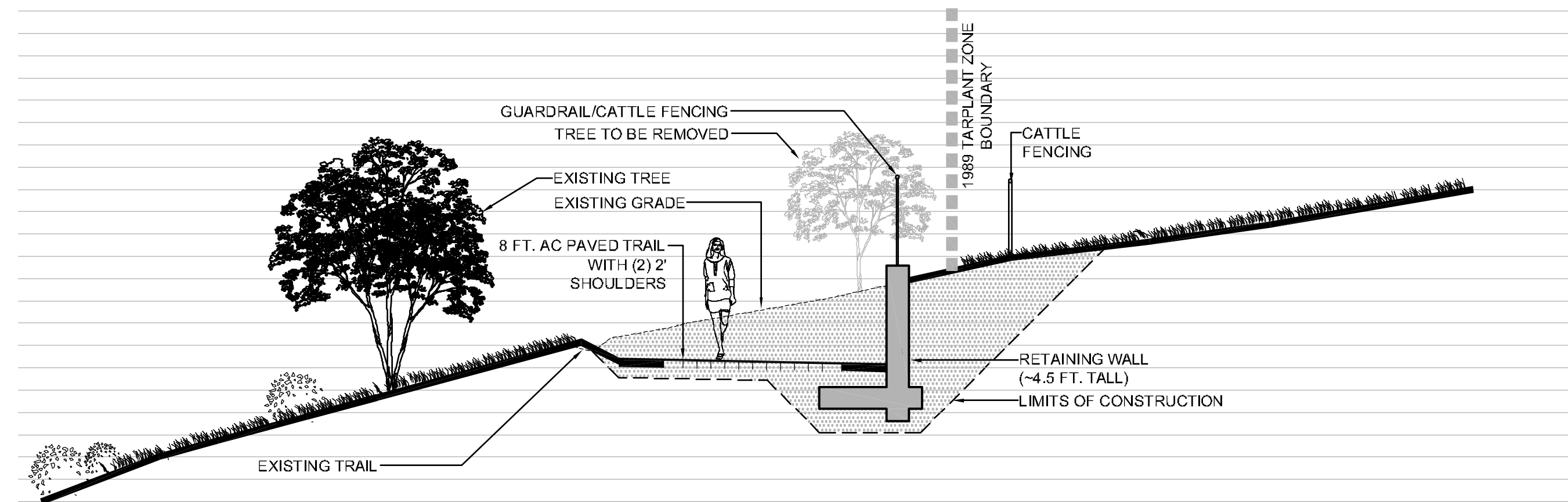
TRAIL COMPARISON TABLE
CITY ALIGNMENT/CNPS ALIGNMENT*

STATISTICS	CITY OF SANTA CRUZ	CNPS
Multi Purpose Trails		
Length	1,194 Lineal feet	1,841 Lineal feet
Width	8' Paved trail + (2) 2' shoulder	8' Paved trail + (2) 2' shoulder
Max. height above existing grade	At grade	7 feet high
Construction impact zone	15,804 sqft.	32,064 sqft.
Tree removal	11 trees	11 trees
Prairie habitat removal	0 sqft.	3,000 sqft.
Cut/Fill		
Net cubic yards	441 CY (Cut)	736 CY (Cut)
Max. depth of excavation	2 ft.	7 ft.
Retaining Walls With Guard Rails		
Length	0 ft.	1,030 ft.
Max. height	0 ft.	11 ft.
Quantity	No walls	7 walls
Storm Drainage		
Length of pipe	0 lineal ft.	160 lineal ft.
Length of earthen swale	0 lineal ft.	910 lineal ft.
No. of structures	none	24

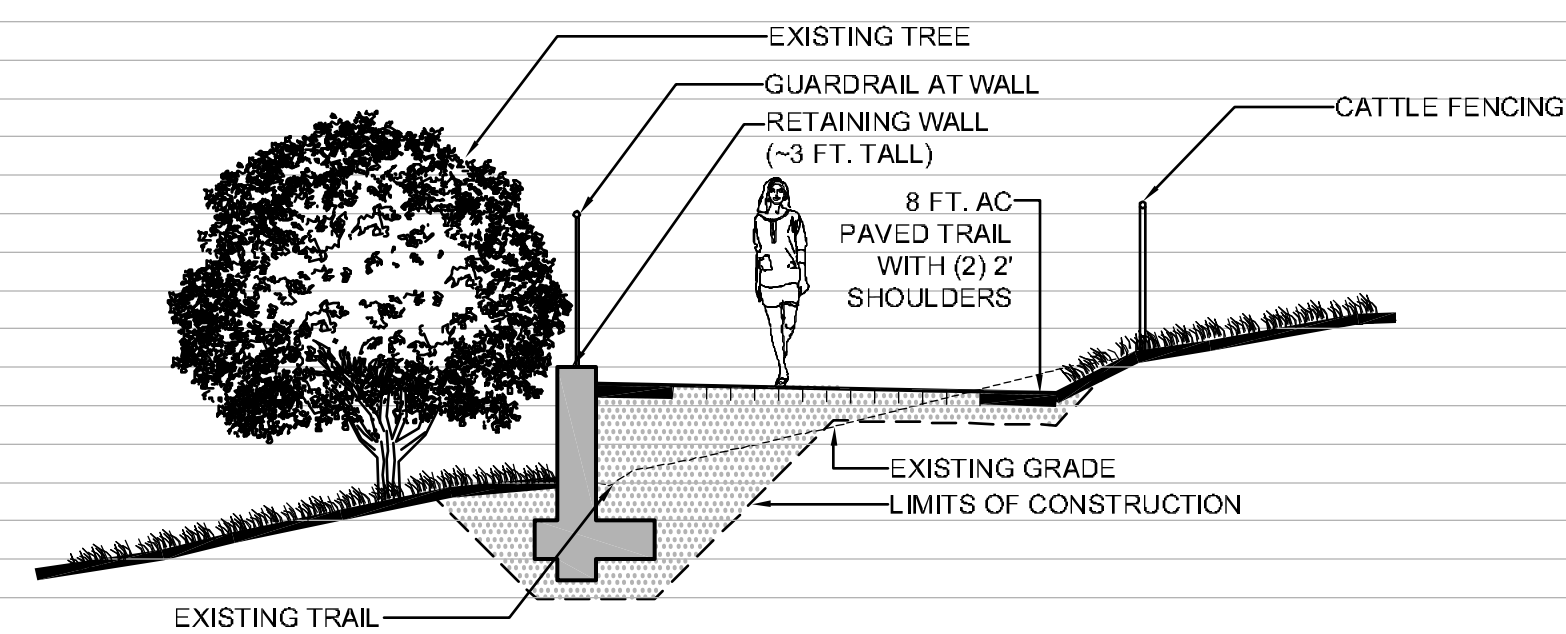




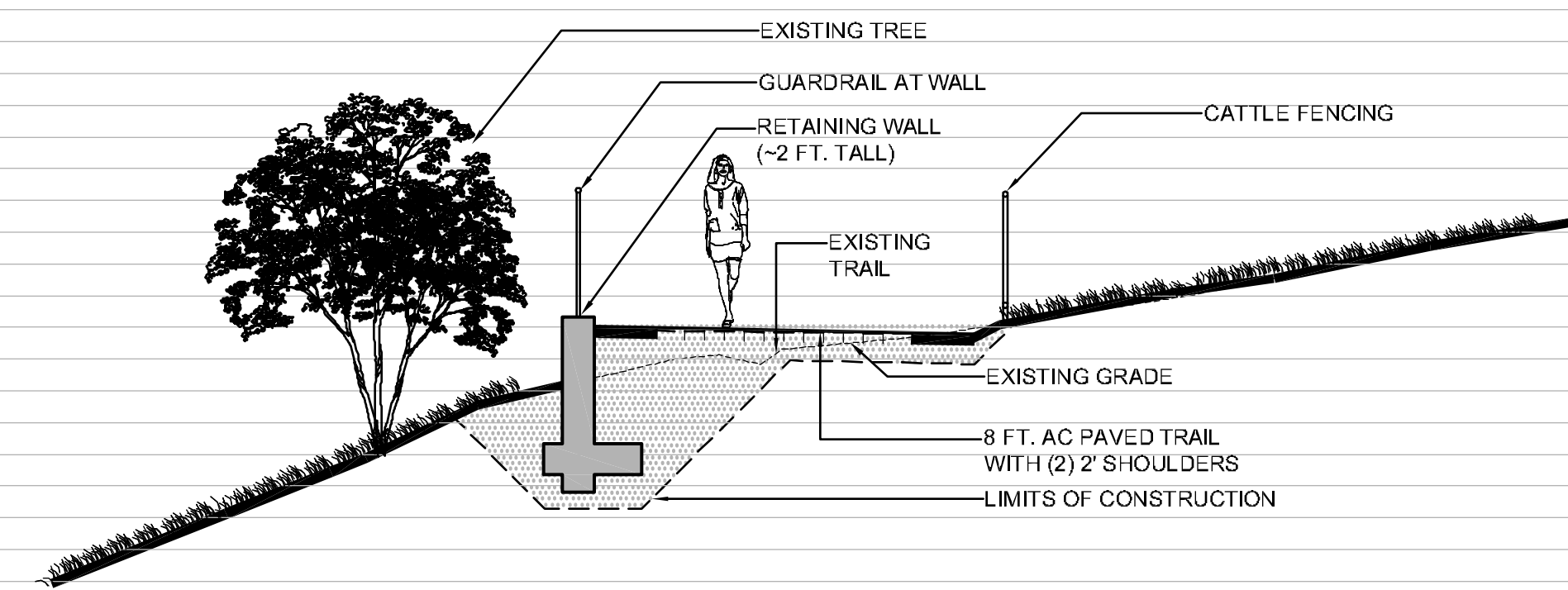
SECTION A2



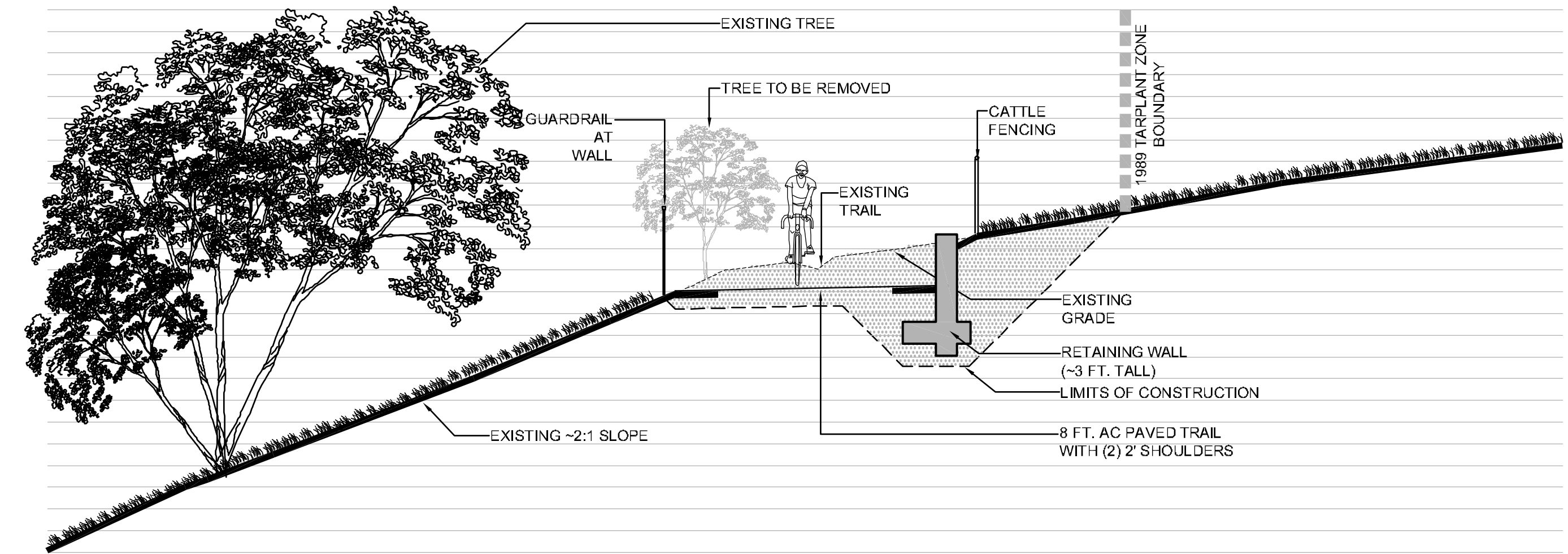
SECTION B2



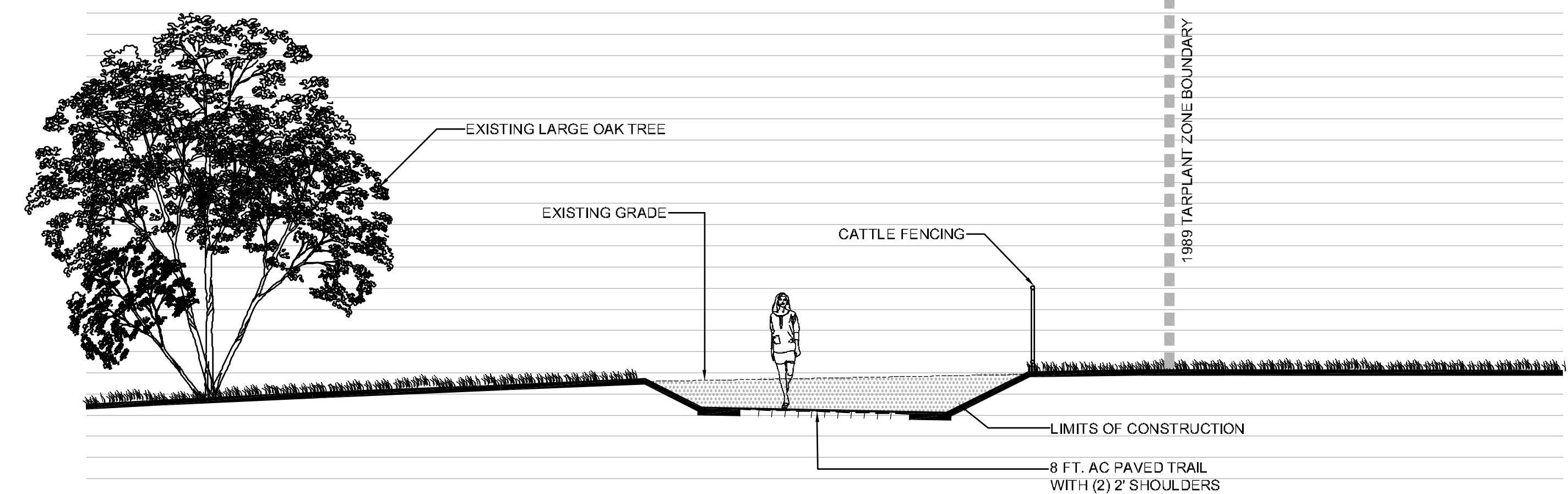
SECTION C2



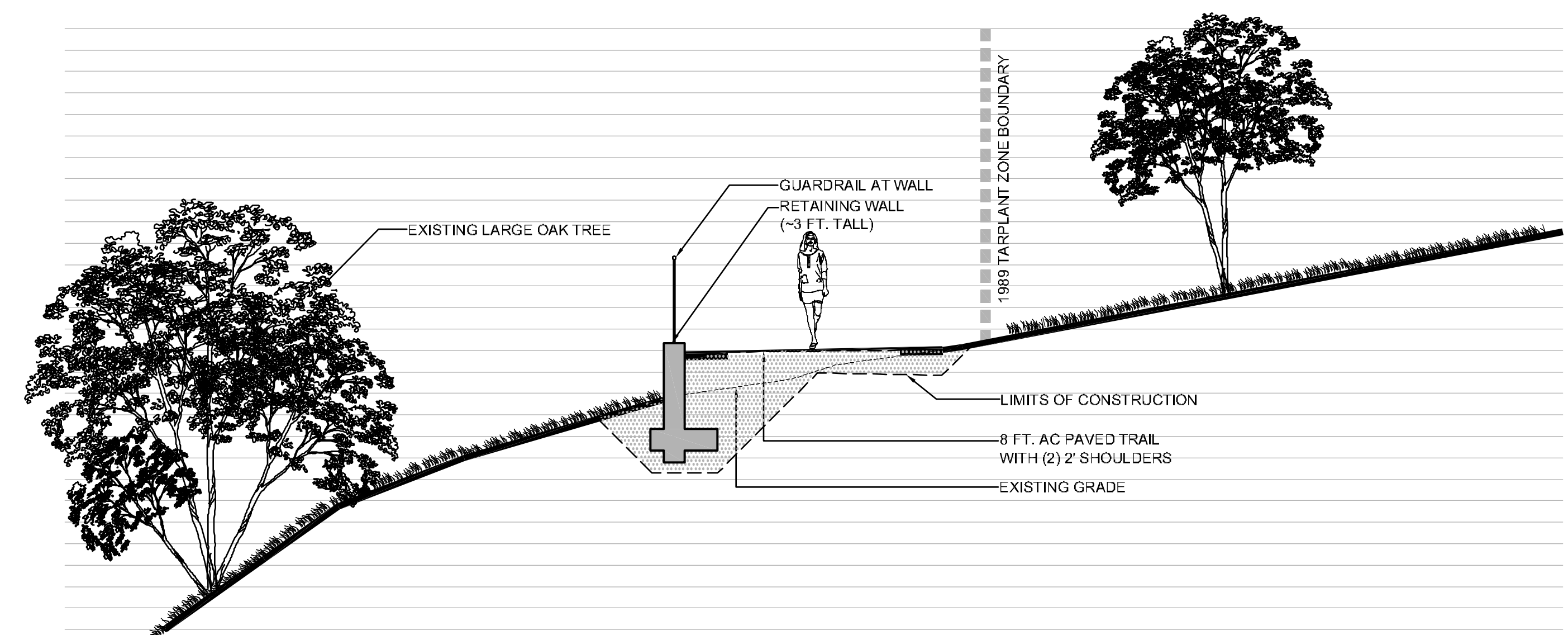
SECTION D2



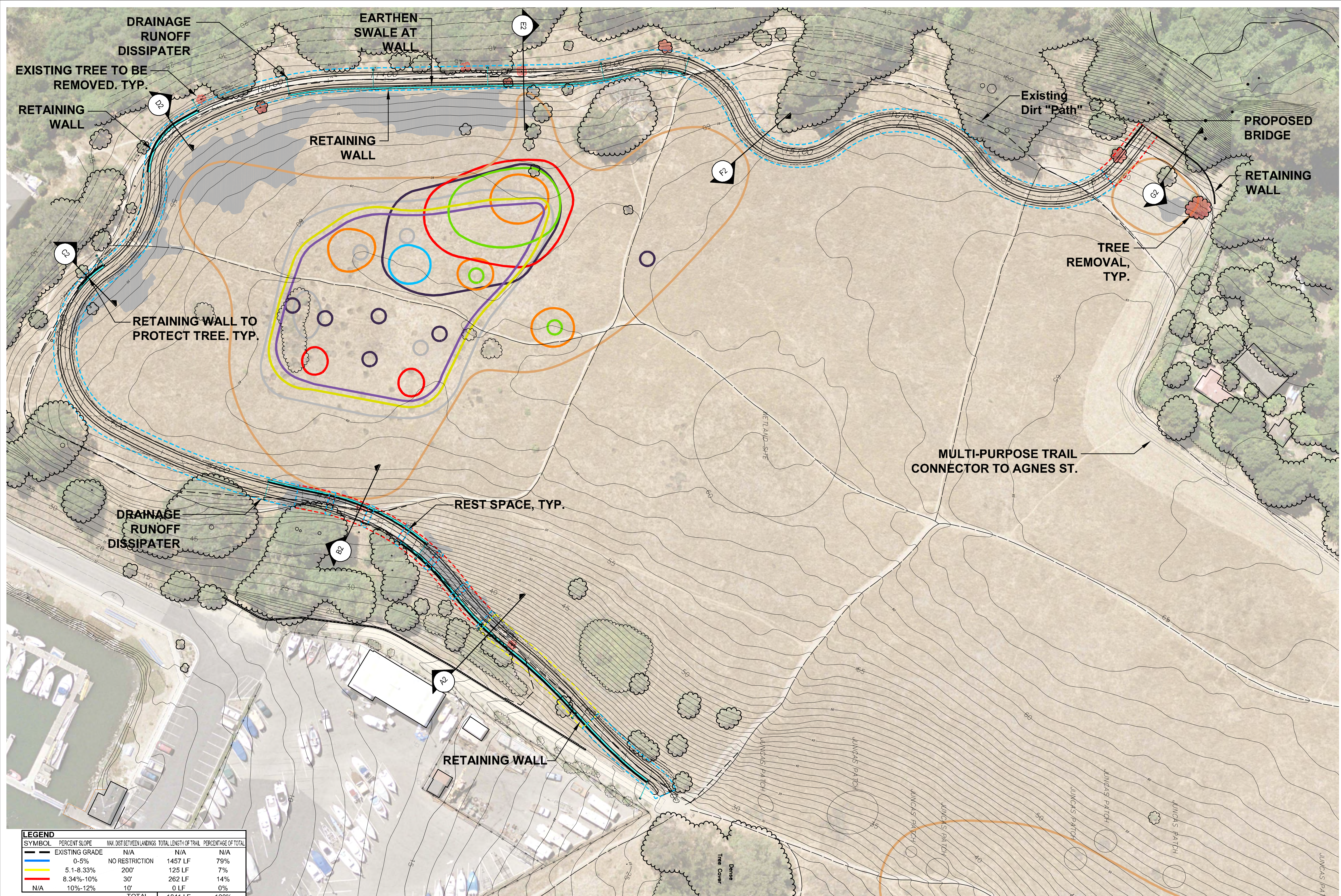
SECTION E2



SECTION F2



SECTION G2



LEGEND

SYMBOL	PERCENT SLOPE	MAX. DIST. BETWEEN LANDINGS	TOTAL LENGTH OF TRAIL	PERCENTAGE OF TOTAL
—	EXISTING GRADE	N/A	N/A	N/A
—	0-5%	NO RESTRICTION	1457 LF	79%
—	5.1-8.33%	200'	125 LF	7%
—	8.34%-10%	30'	262 LF	14%
—	10%-12%	10'	0 LF	0%
TOTAL			1841 LF	100%

