



Appendix 1

2009 Calls for Service Call Density

High Calls for Service
Low Calls for Service



0 0.25 0.5 1 Miles



2010 Calls for Service Call Density



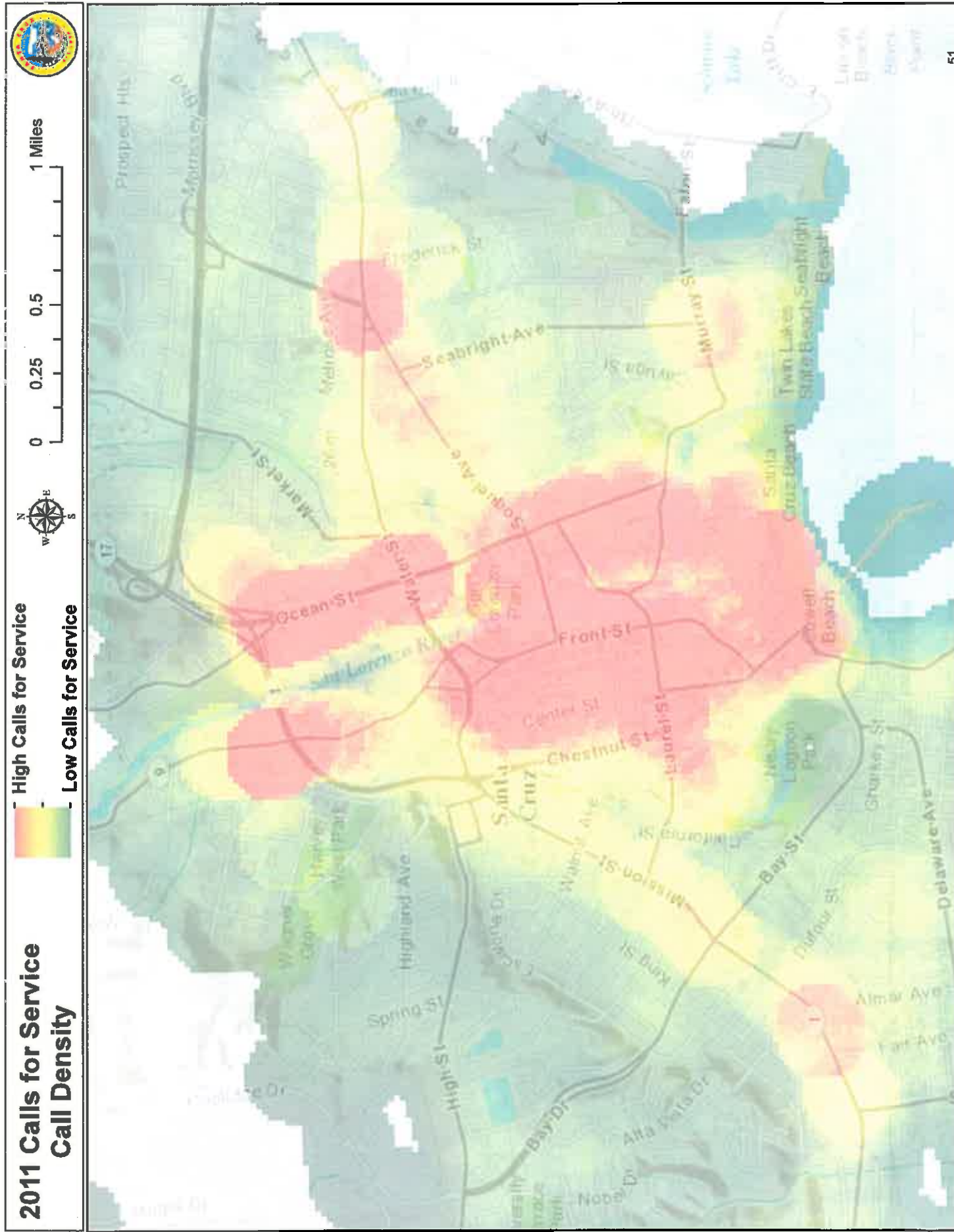
High Calls for Service

Low Calls for Service



0 0.25 0.5 1 Miles





2012 Calls for Service Call Density



High Calls for Service

Low Calls for Service



0 0.25 0.5 1 Miles



2009-2012 Calls for Service Call Density

High Calls for Service
 Low Calls for Service



1 Miles
0.5
0.25
0

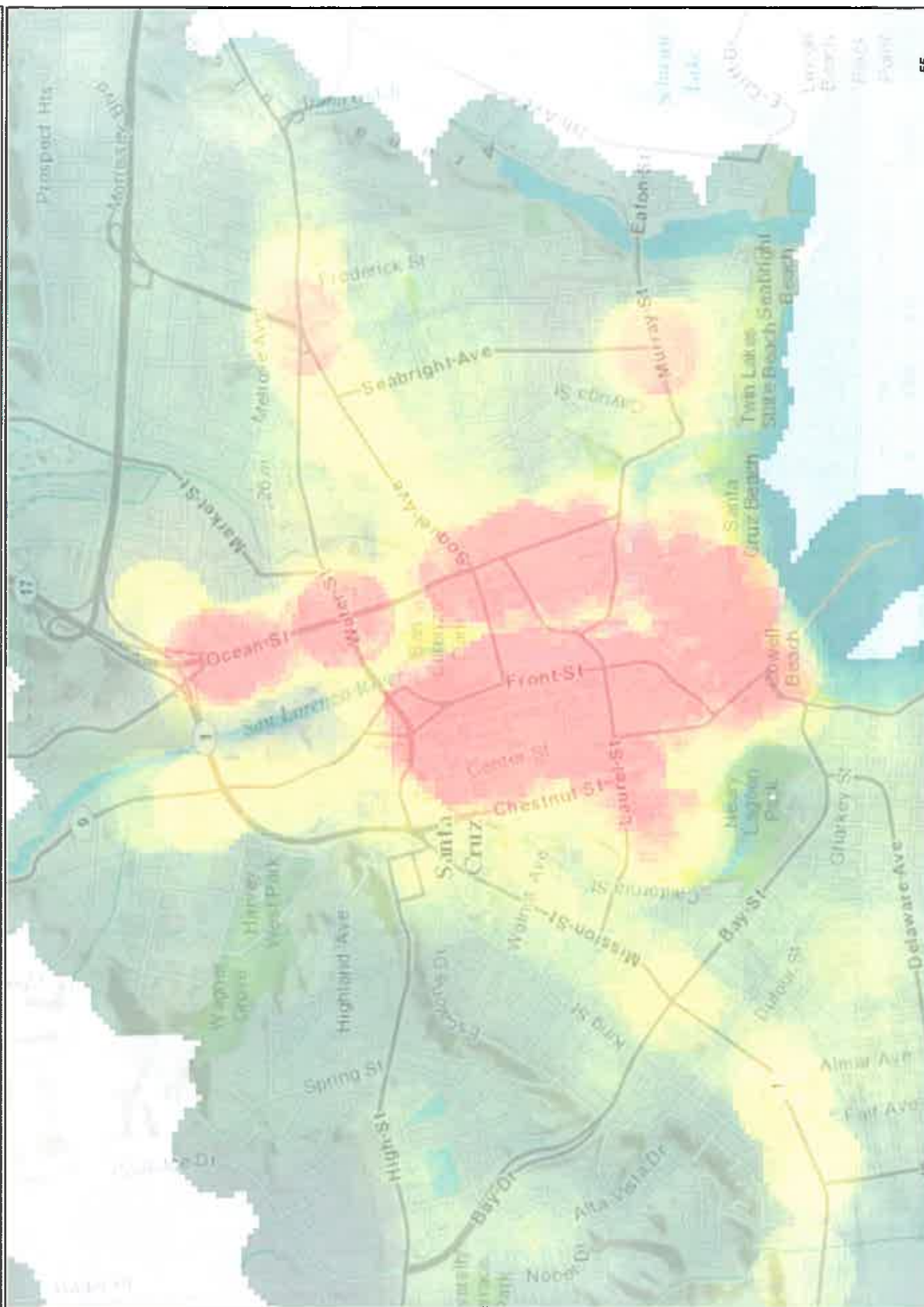
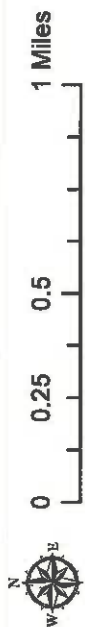


2009-2012 Calls for Service
Day Time Call Density
6:00 am - 9:00 pm



High Calls for Service

Low Calls for Service



**2009-2012 Calls for Service
Low Season Call Density
November 1st - April 30th**

High Calls for Service



Low Calls for Service



1 Miles

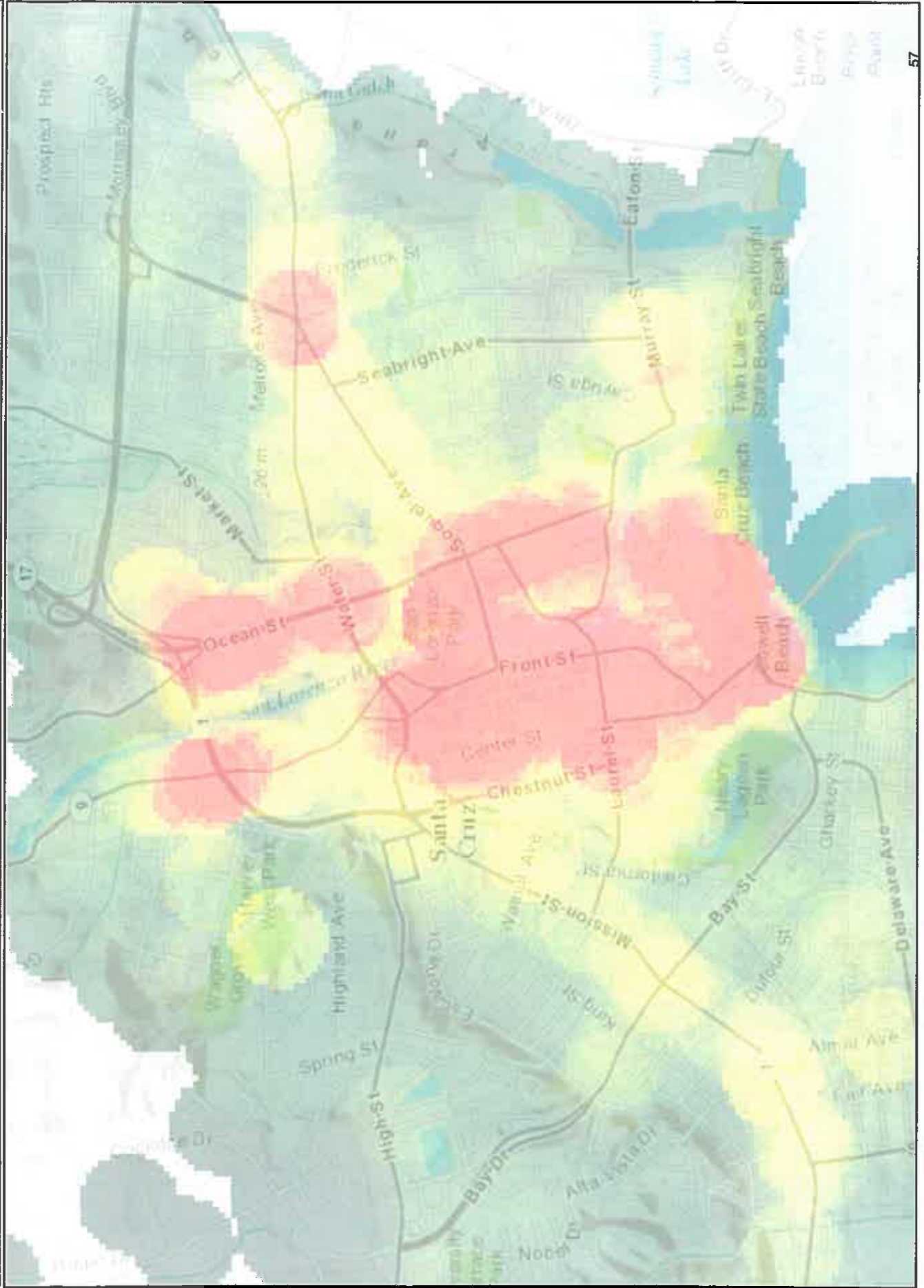
0

0.25

0.5



**2009-2012 Calls for Service
High Season Call Density
May 1st - October 31st**

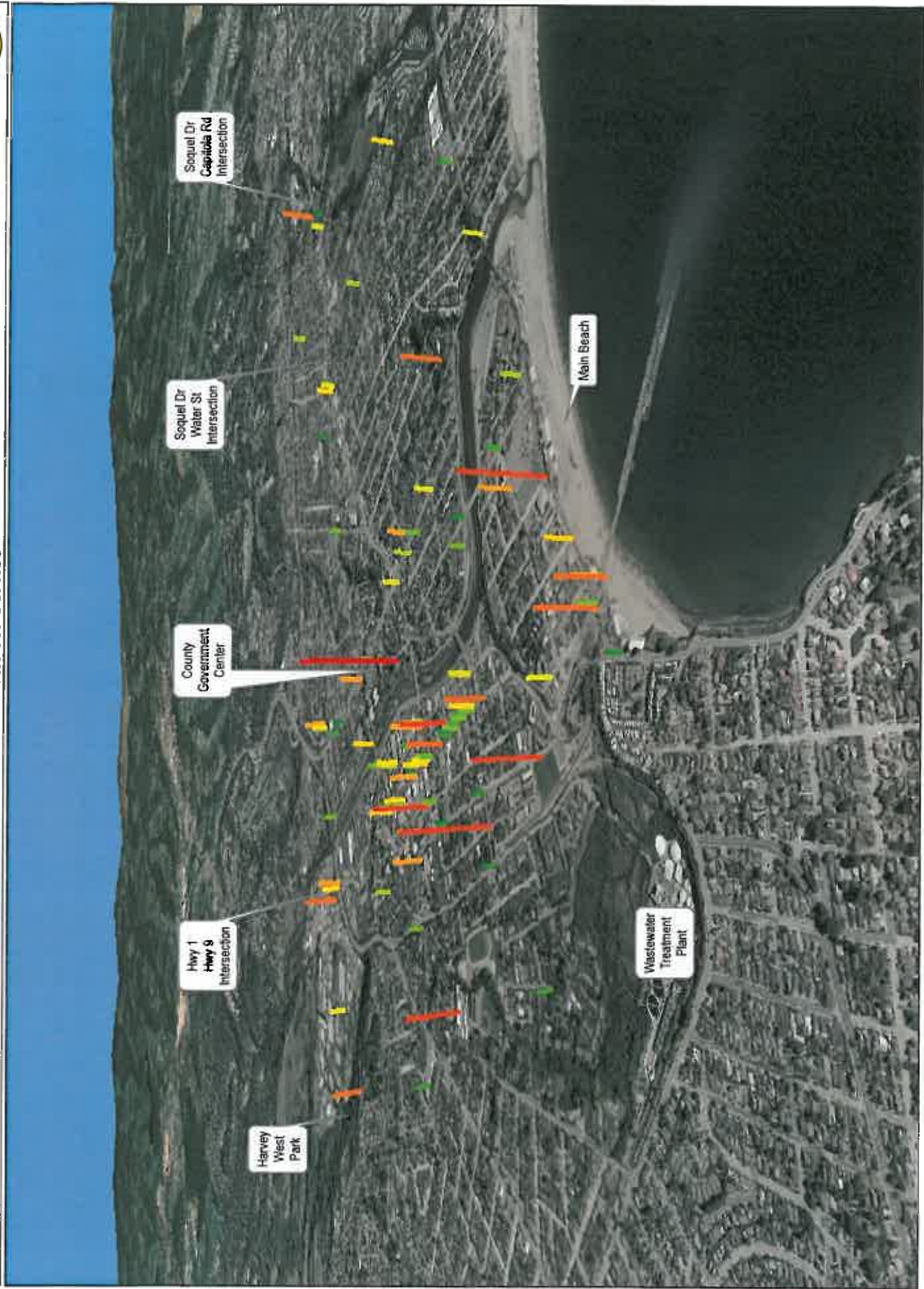


2009 Calls for Service Top 100 Call Locations



High Calls for Service

Low Calls for Service

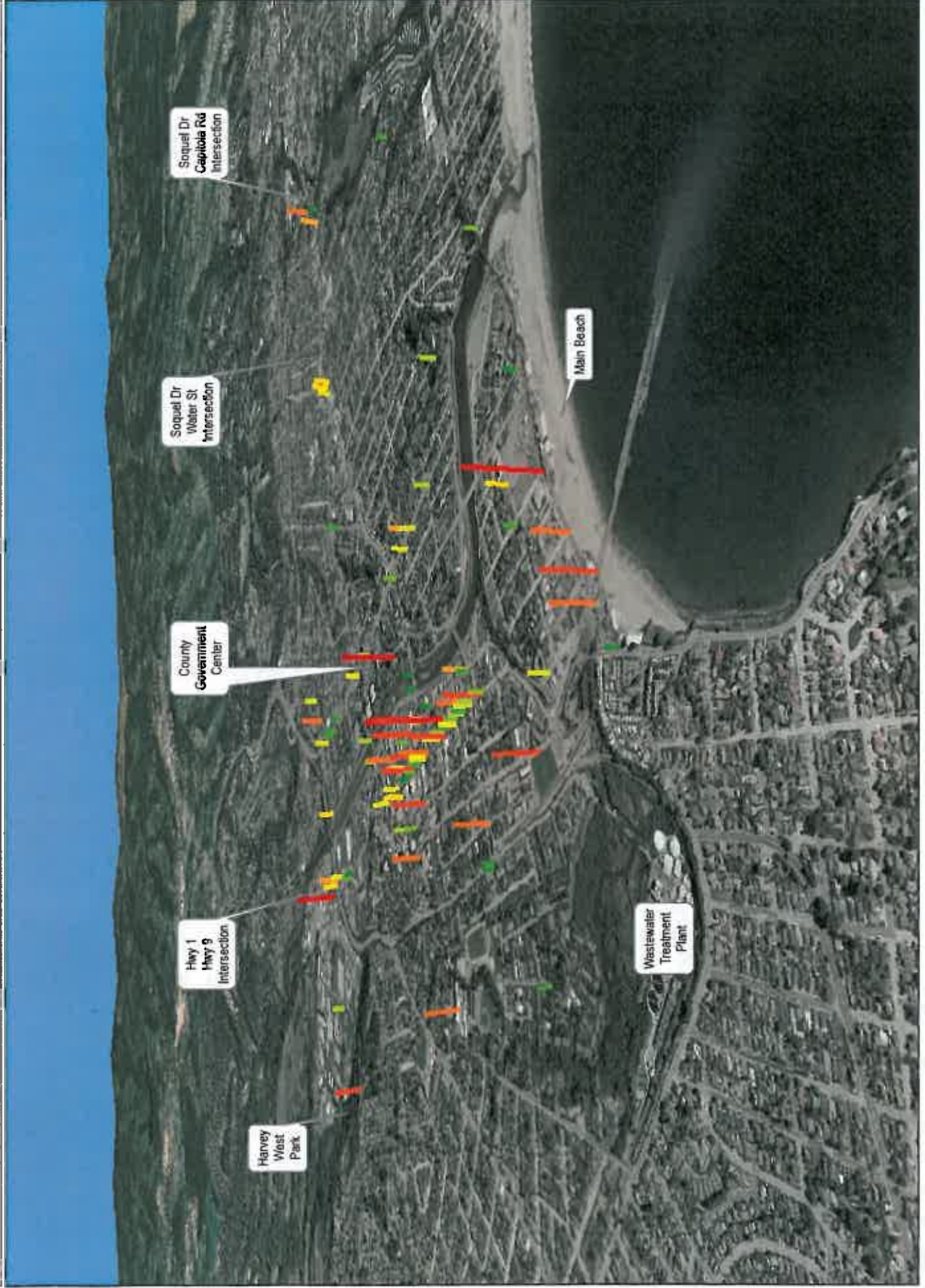


2010 Calls for Service Top 100 Call Locations

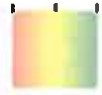


High Calls for Service

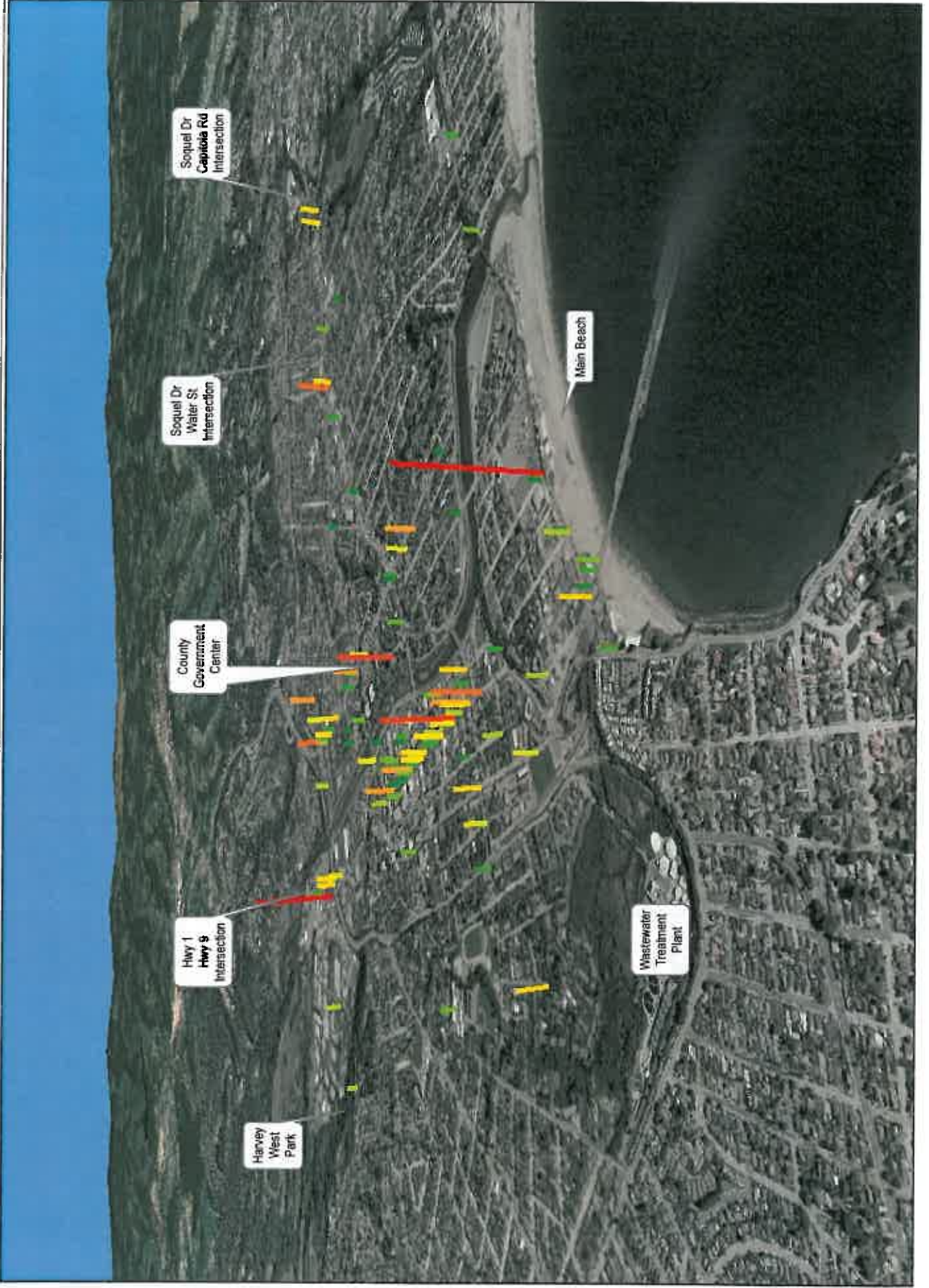
Low Calls for Service



2011 Calls for Service Top 100 Call Locations



High Calls for Service
Low Calls for Service

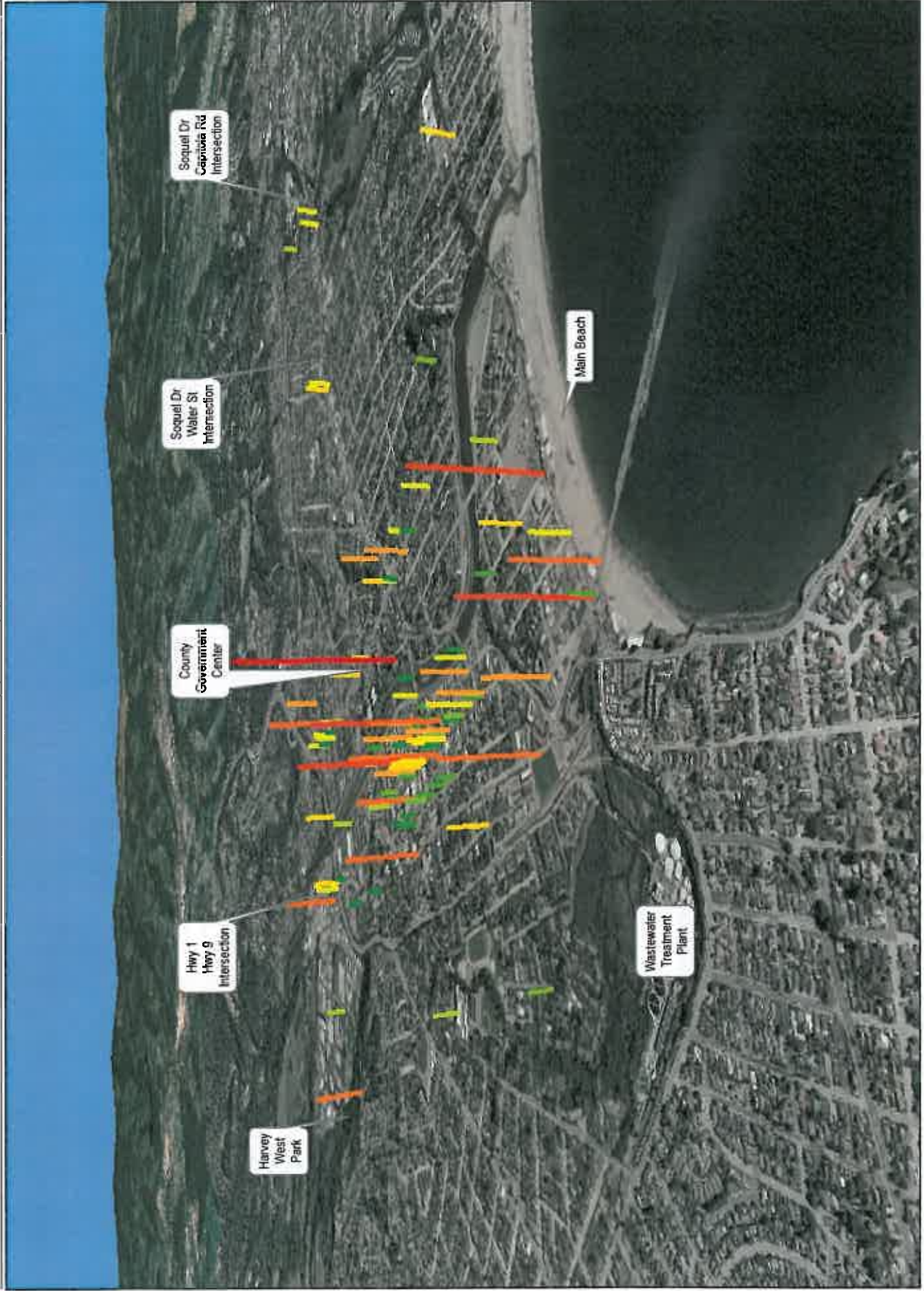


2012 Calls for Service Top 100 Call Locations



High Calls for Service

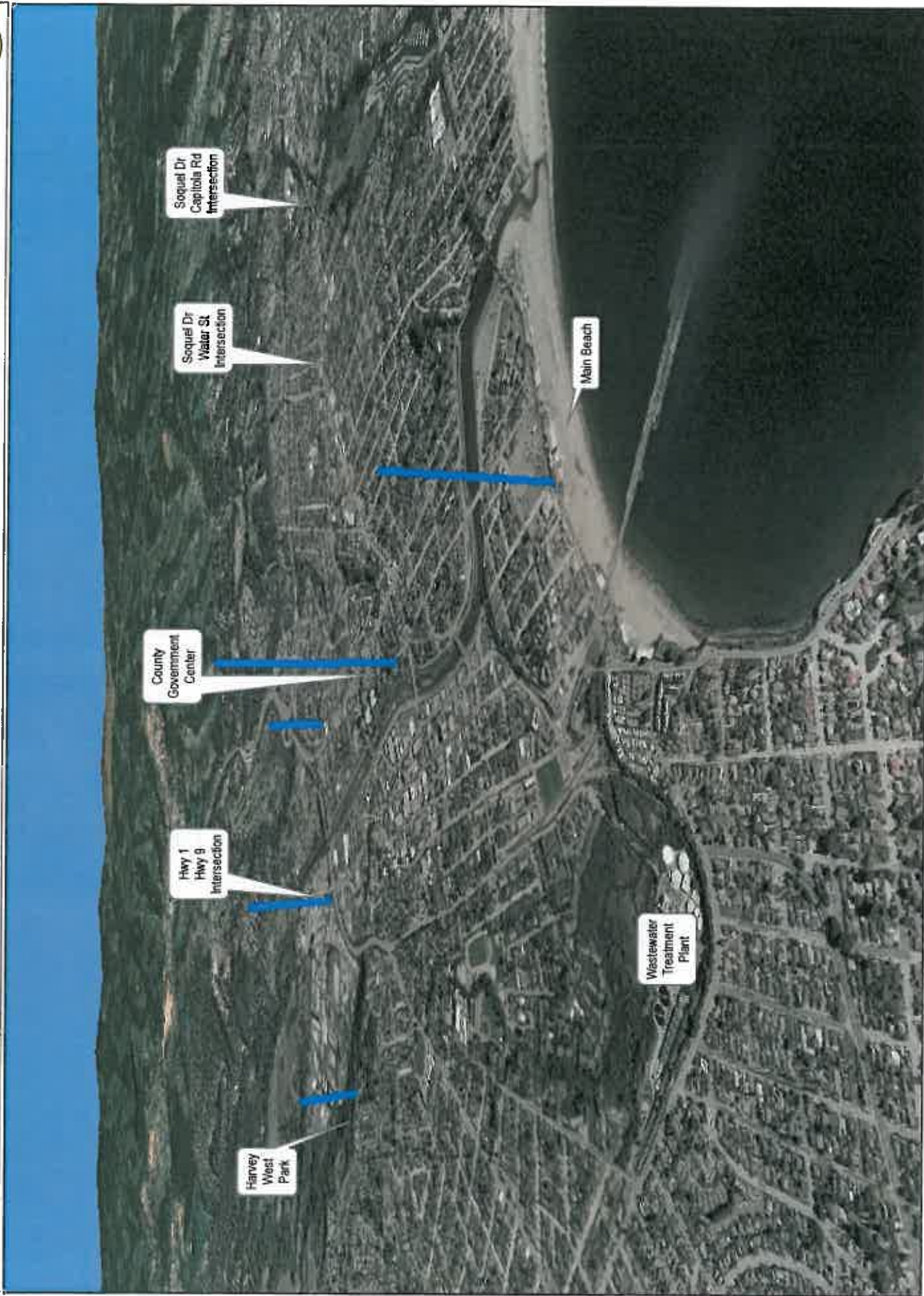
Low Calls for Service



2009-2012 Calls for Service Top 5 Day Time Call Locations



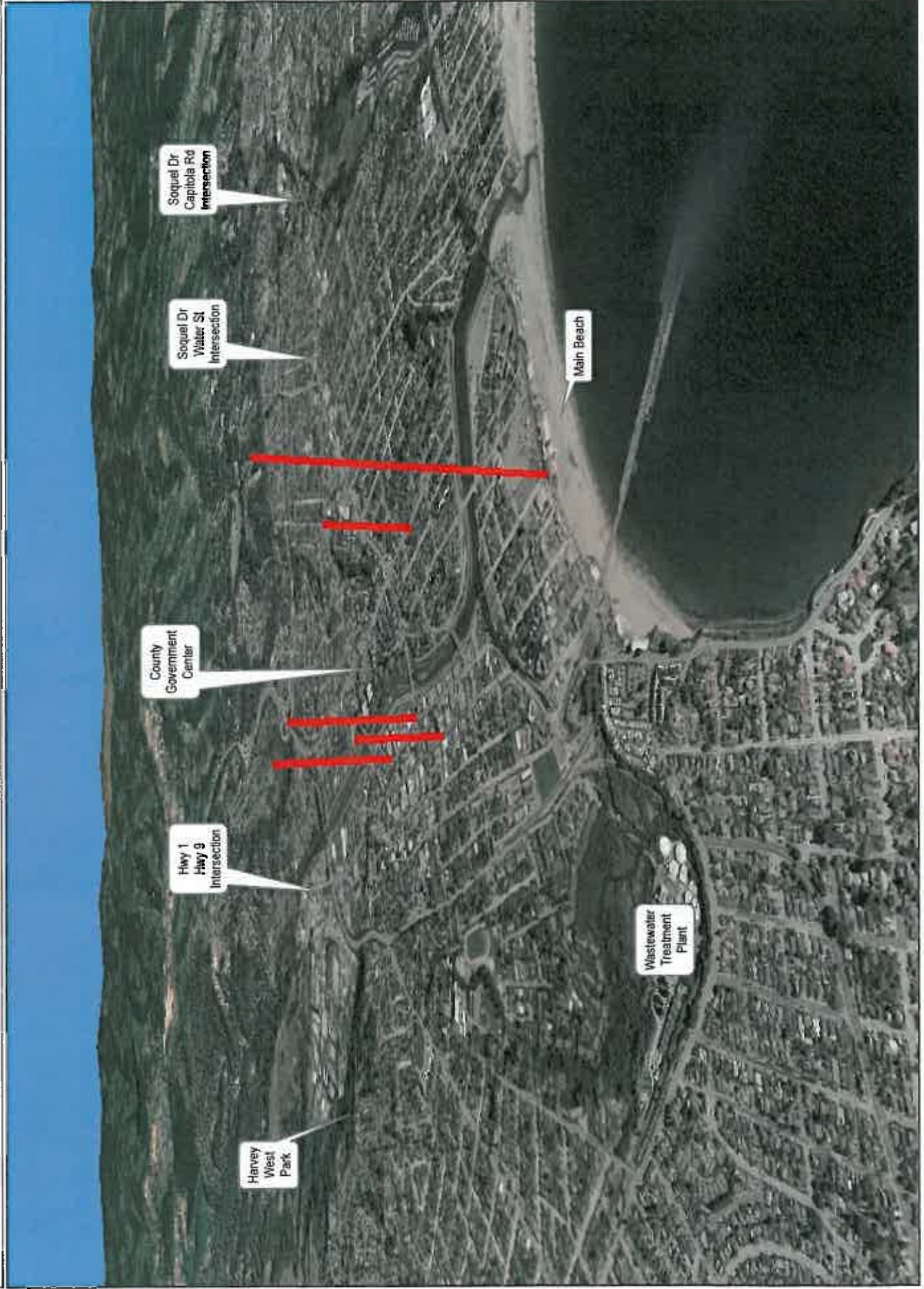
High Calls for Service
Low Calls for Service



2009-2012 Calls for Service Top 5 Night Time Call Locations



High Calls for Service
Low Calls for Service





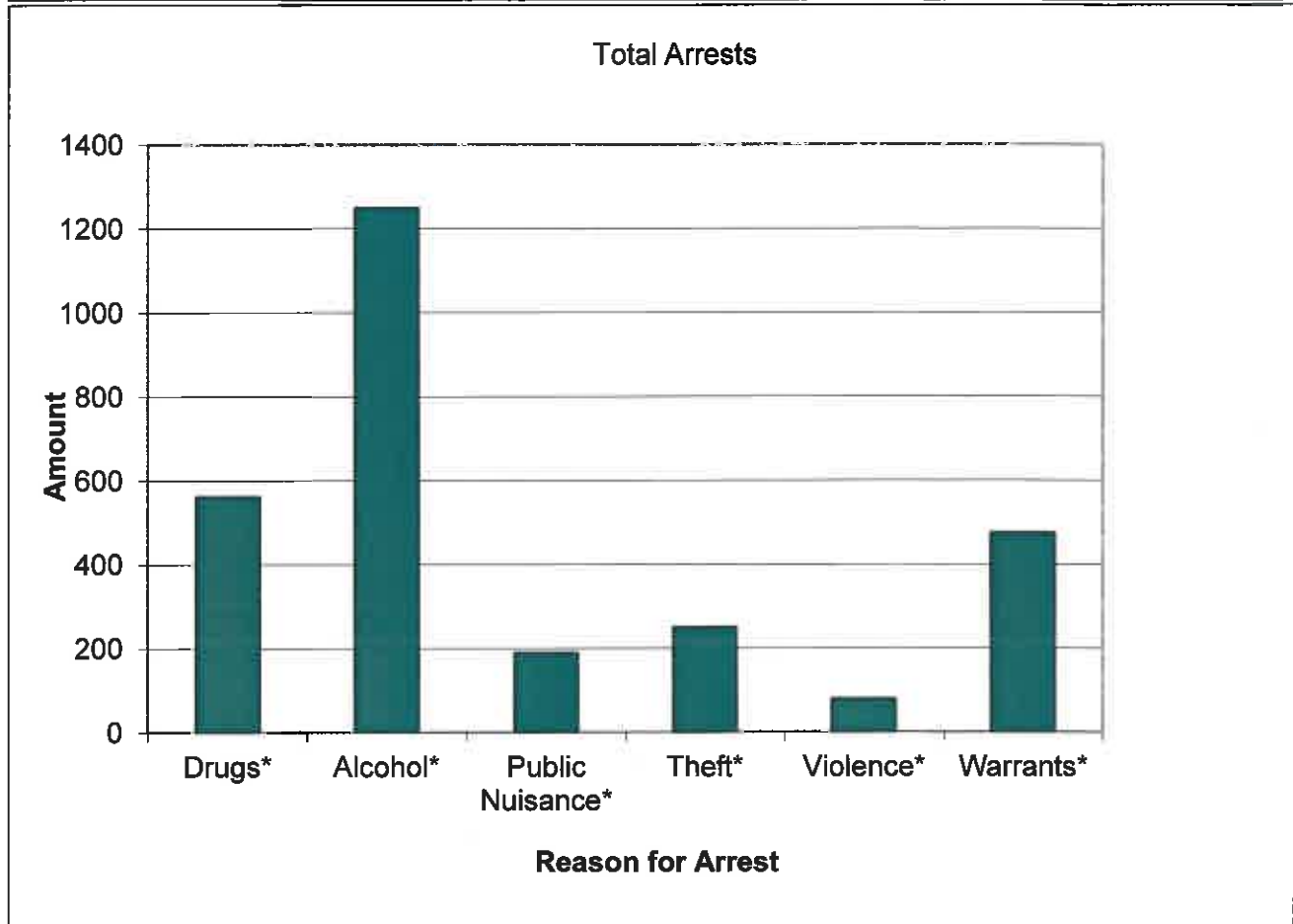
Appendix 2

**Appendix 2: Santa Cruz City Repeat Offenders
(More than 10 arrests from January 2011 to April 2013)**

of Individuals Represented 146

Total Overall Arrests 3598

	Drugs*	Alcohol*	Public Nuisance*	Theft*	Violence*	Warrants*	Substance Related
Total Arrests	562	1,250	189	250	79	475	1812
% of Total	16%	35%	5%	7%	2%	13%	51%



***Drugs:** Possession of controlled substance paraphernalia, possession of marijuana (28.5g or less), using/under the influence of controlled substance, possession of narcotic controlled substance, possession of unlawful paraphernalia, possession of hypodermic needle/syringe, possession of marijuana over 28.5g, possession of concentrated cannabis, illegal drug activity, give/transport/etc. marijuana over 28.5g, riding bicycle under the influence of alcohol and drugs, keep place to sell/etc. controlled substance, give/transport marijuana/hashish under 1 oz., sell/etc. in lieu of controlled substance, visit where controlled substance is used, open container within 48 hours.

***Alcohol:** Consuming alcohol in public, selling/etc. liquor to a minor, minor possession of alcohol, disorderly conduct: alcohol, oral copulation: victim intoxicated/etc., misconduct: intoxicated drugs with alcohol, open container in public, bringing alcohol/drug/etc. into prison/etc.

***Violence:** Inflict corporal injury on spouse/cohabitant, battery, battery on peace officer/emergency personnel/etc., battery with serious bodily injury, murder, fight/challenge to fight in public place, assault misdemeanor, fight/challenge to fight/offensive words in public place, cause harm/death of elder/dependent adult, battery on spouse/cohabitant, rape: victim drugged

***Public Nuisance:** Remove Steal/Possess Shopping Cart, Retrieve Shopping Cart W/O Proper Authority, Place/Etc. Pollutant Near State Waters, Illegal Discharge Of Sewage/Waste/Etc., Disorderly conduct: Lodge without owners consent, Disorderly Conduct: Loiter On Private Property, Disorderly Conduct: Solicit Lewd Act, Disturb The Peace, Smoking on Beach St. right-of way, Pacific Ave, City Building Safety Enhancement Zone Penalty, Fgt/Chal Fgt/Offensive Words Public Place, Fight/Challenge Fight Public Place, Indecent Exposure W/Pr-Felony, Indecent Exposure-Misdemeanor, Offensive Words In Public Place, Trespass: Enter/Occupy real prop or structure w/out owner consent, Trespass: Entering properties of same owner after being informed, Trespass: Obstruct/Etc. Public Business Operation/Etc., Trespass: Posted Land: Refuse to leave, Trespass: Refuse to leave property, Trespass: Refuse to leave property: Owner request, Trespassing, Vandalism

***Theft:** Burglary, Burglary/Residential, Burglary Commercial, Burglary Shoplifting, Grand Theft Firearm/Animal/Etc., Grand Theft: Money/Labor/Property +\$950, Petty Theft, Petty Theft W/Prior Jail Term For Theft/Burglary/Robbery,

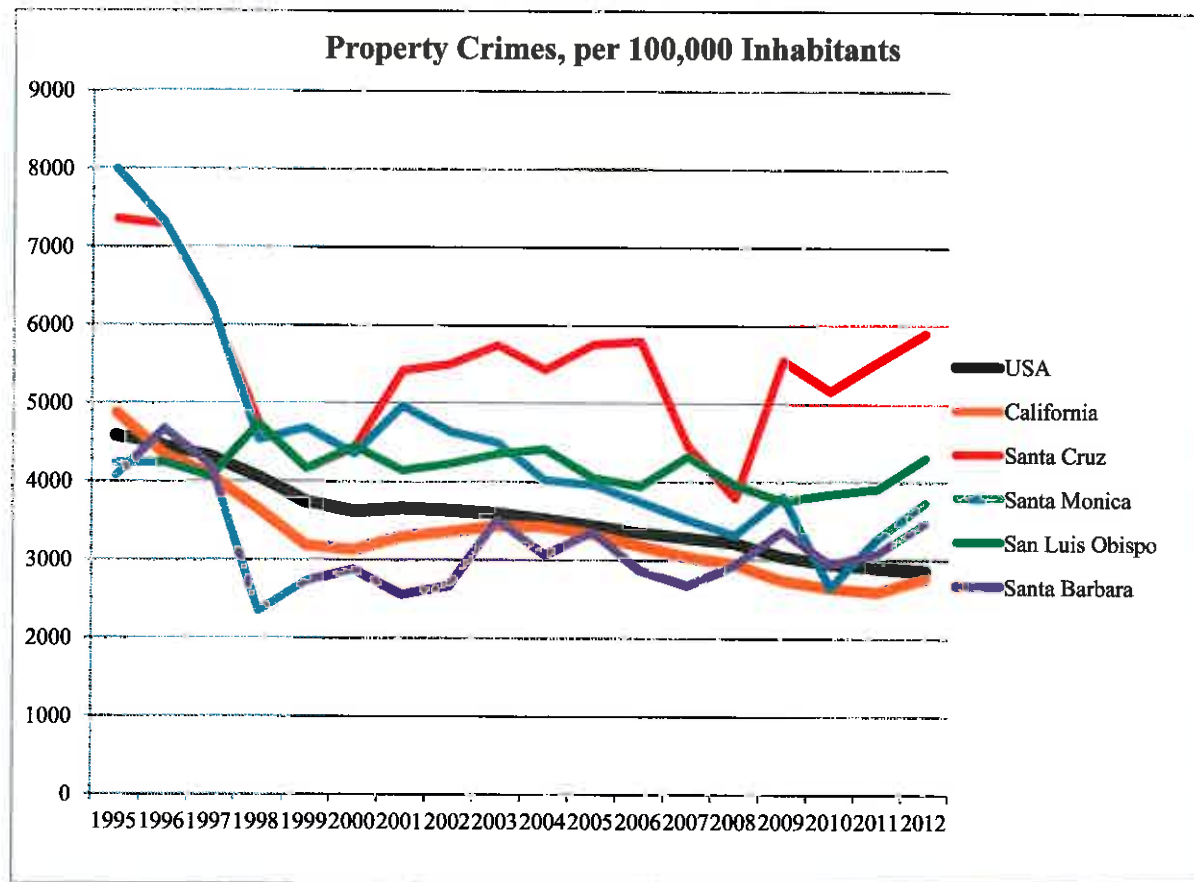
***Warrants:** Outside Warrant: Misdemeanor, Outside Warrant: Felony, Bench Warrant: Misdemeanor, Bench Warrant: Felony



Appendix 3

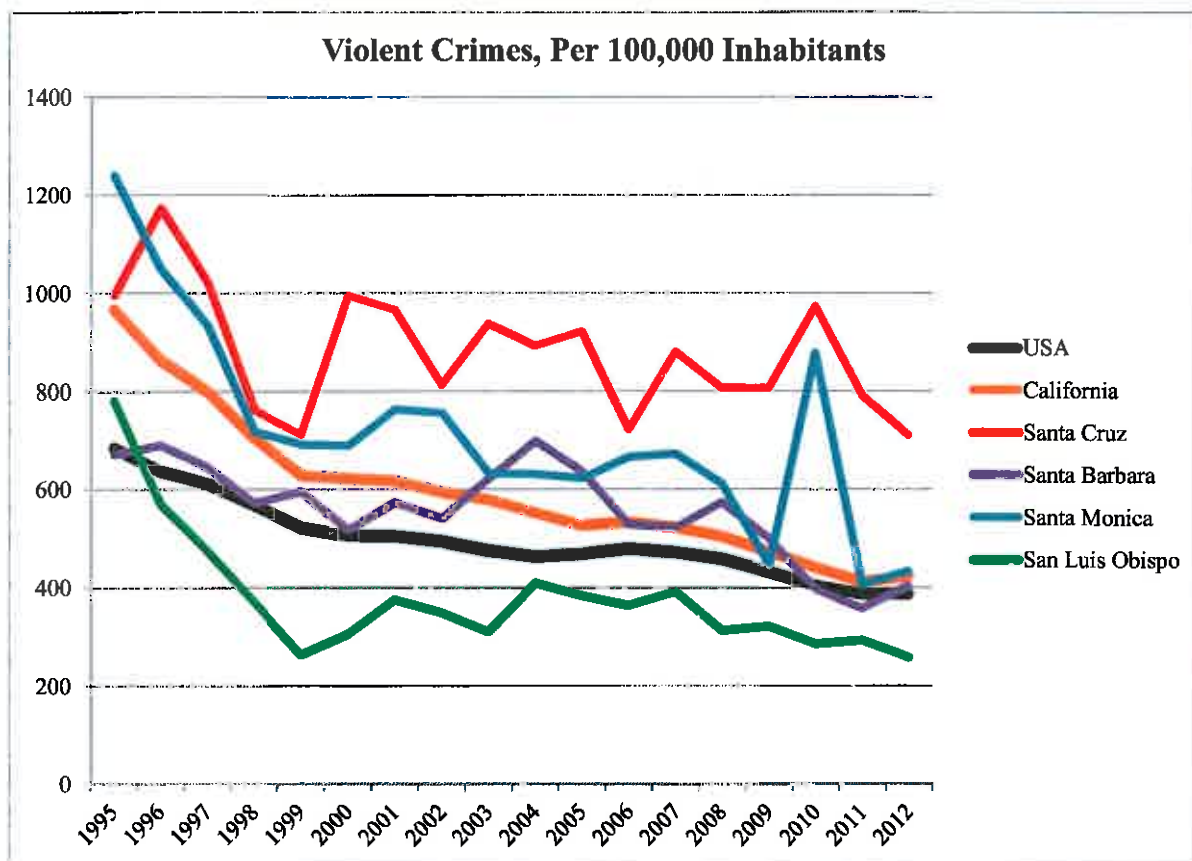
Appendix 3: Santa Cruz Property Crime Comparison

Year	USA	California	Santa Monica	San Luis Obispo	Santa Barbara	Santa Cruz
1995	4591	4865	7985	4234	4065	7351
1996	4451	4345	7303	4239	4675	7285
1997	4316	4067	6234	4058	4195	6195
1998	4053	3639	4530	4737	2335	4726
1999	3744	3178	4684	4162	2725	4162
2000	3618	3118	4347	4444	2875	4425
2001	3658	3286	4963	4136	2560	5411
2002	3631	3350	4637	4221	2668	5493
2003	3591	3424	4495	4347	3505	5737
2004	3514	3419	4015	4410	3058	5422
2005	3432	3323	3954	4045	3347	5748
2006	3347	3171	3741	3934	2865	5788
2007	3276	3033	3509	4315	2674	4452
2008	3215	2940	3316	3954	2928	3784
2009	3041	2732	3810	3746	3366	5549
2010	2946	2636	2641	3831	2941	5164
2011	2905	2584	3272	3904	3081	5533
2012	2859	2759	3725	4290	3466	5887



Appendix 3: Santa Cruz Violent Crime Comparison

Year	USA	California	Santa Monica	San Luis Obispo	Santa Barbara	Santa Cruz
1995	685	966	1240	780	670	995
1996	637	863	1050	570	690	1173
1997	611	798	934	474	645	1022
1998	568	704	718	369	572	762
1999	523	627	691	264	595	712
2000	507	622	690	306	517	995
2001	505	617	764	376	573	966
2002	494	593	756	349	541	813
2003	476	579	633	311	622	938
2004	463	552	632	409	699	893
2005	469	526	623	384	637	922
2006	479	533	666	364	528	722
2007	472	523	673	393	523	881
2008	459	504	612	313	573	807
2009	432	472	446	321	499	807
2010	405	441	878	286	397	973
2011	387	411	406	294	357	791
2012	387	423	433	259	404	711





Appendix 4

Santa Cruz County Gang Task Force

A Review of 2012

Prepared for the Criminal Justice Council, February 2013

TFC Mario Sulay
2/6/2013

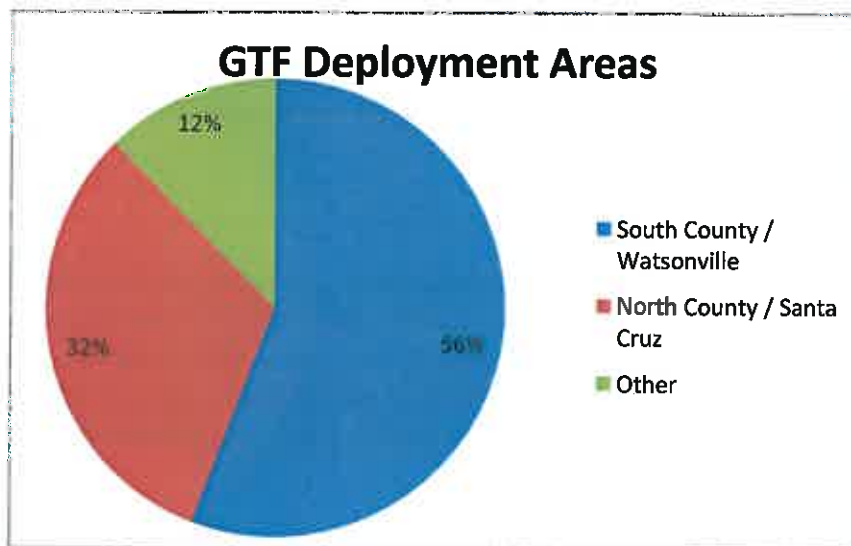
2012 Year in Review

CJC Report Feb. 7th, 2013

Santa Cruz County Gang Task Force

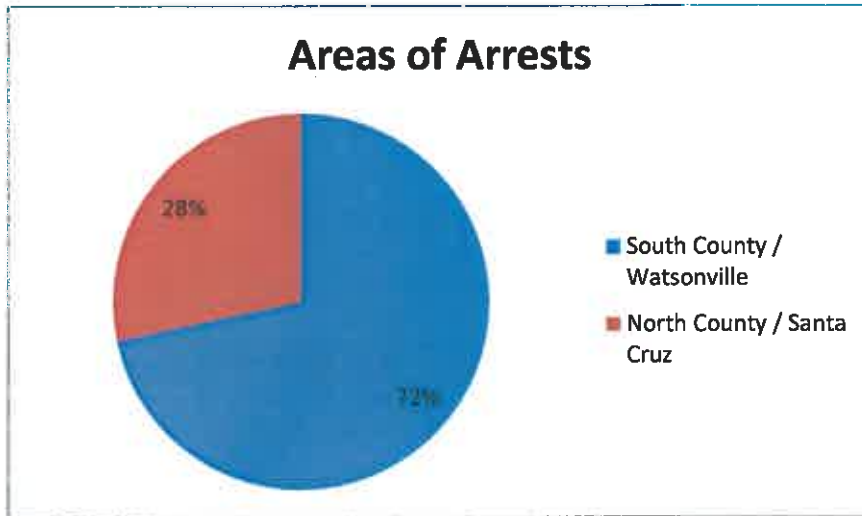
GANG TASK FORCE 2012 STATS													
DUTIES:	January	February	March	April	May	June	July	August	September	October	November	December	Totals
Felony Arrests	34	35	19	24	22	17	10	19	10	17	4	8	219
Misdemeanor Arrest	4	9	10	9	17	5	5	5	9	13	0	2	88
Parole Searches	24	20	20	6	8	5	8	7	4	7	0	1	110
Gang CDC/CYA Parole Contacts	15	4	14	5	3	2	4	1	4	5	2	1	60
Probation Searches	22	14	42	18	25	16	11	15	19	58	4	7	251
Gang Probation Contacts	19	9	32	13	18	17	11	10	5	36	0	4	174
Gang FIs	9	19	23	29	27	25	5	11	20	76	1	21	286
Non-Gang FIs	0	1	4	4	3	6	0	3	4	7	0	3	35
Citations Issued	2	2	0	7	4	1	1	0	1	2	0	0	20
Search Warrants Written	5	0	0	5	1	4	0	2	1	0	1	2	21
Search Warrants Served	2	0	2	8	1	4	2	5	0	1	2	1	28
Other Unit/ Agency Assists	0	9	5	4	2	4	5	8	1	6	0	2	46
Firearm Seized	3	4	1	5	4	3	0	0	2	2	1	0	25
Knife Seized	6	5	1	2	12	2	1	1	0	8	0	2	40
Other Weapon Seized	0	1	0	2	0	1	0	0	0	0	0	0	4
Methamphetamine	90.7	0.7	0	1.8	12.1	33.6	35.5	0	32.9	4.2	1	2.8	215.3
Heroin	1.6	5.2	0.1	1032.45	3.05	0.1	250	0.6	1	0	0.4	0.1	1294.6
Marijuana Drugs Seized	0	2.3	0	156.3	147.8	0	28	87.2	3.9	0	0	0	425.5
Cocaine Drugs Seized	0	0	0.8	0	0	12.9	171	10.7	0	6.2	0	0	201.6
Other Drugs Seized	4	31	97	0	0	25	0	0	0	0	0	0	157
Gang Presentations / Training	2	0	4	12.5	9	32	8	0	0	0	1	0	68.5
Court Time Preparation (in hrs)	12	6	0	23	2	0	4	0	21.5	14.5	0	0	83

In 2012 the Gang Task Force (GTF) staff worked through personnel shortages. Staffing levels effect deployments. With sufficient staffing the GTF can effectively cover the entire county with suppression patrols. However, when staff is limited, then county coverage will be selected based on recent gang related activity. This limits GTF presence to one area of the county at a time.



Gang Suppression Operations

The GTF utilizes various tactics to suppress gang related crimes and activity. GTF officers will patrol areas identified as having high gang activity, contact and perform compliance checks on known probationers and parolees, and initiate investigations based on intelligence obtained through informants or other law enforcement sources.

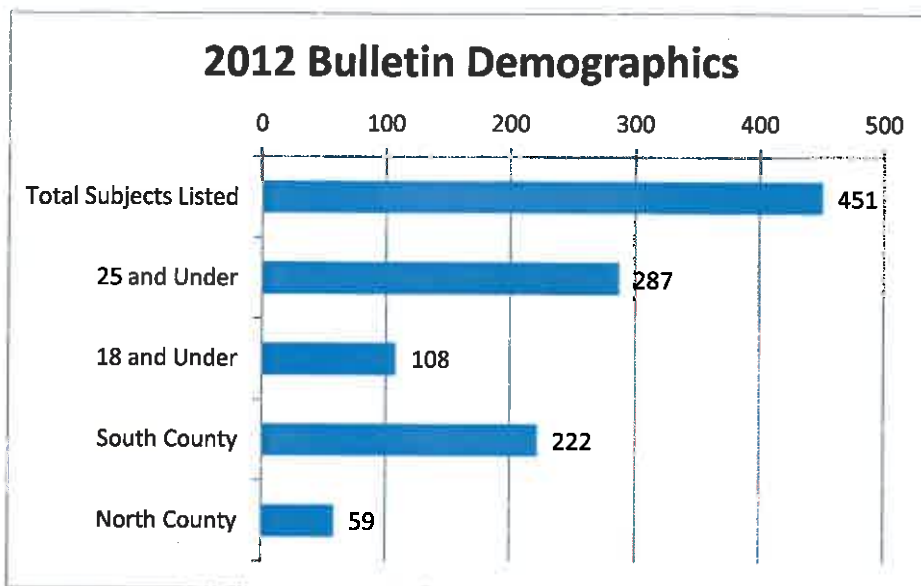


Agency Assists / Community Resource

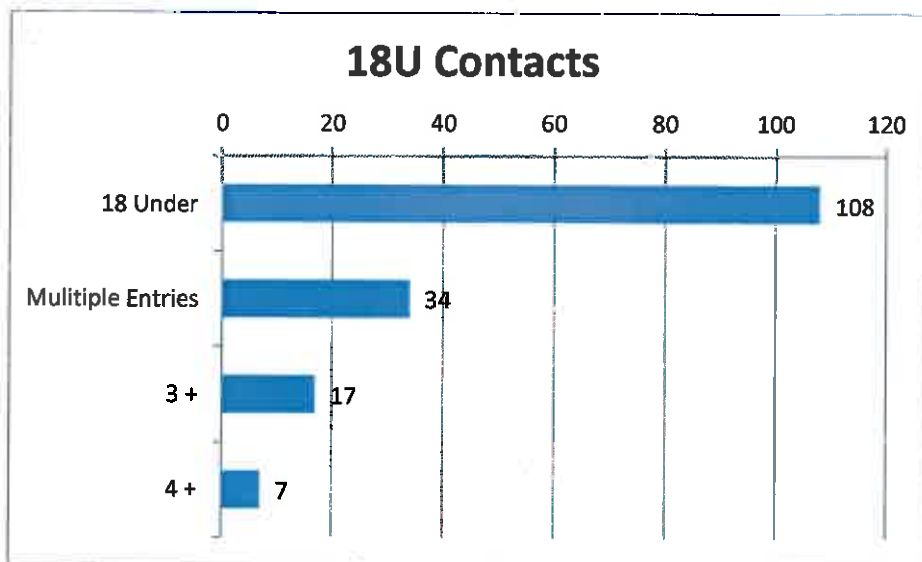
In addition to conducting pro-active operations, the GTF also supports patrol and investigation units in the performance of their duties. When deployed, GTF officers are “force multipliers” in any area of the county. GTF officers are able to respond, as needed, to support initial response or with follow-up investigation of a gang or major crime in all county jurisdictions. The GTF is a resource for gang awareness training for law enforcement, local governmental agencies, or community organizations.

Gang Intelligence Bulletin

The GTF collects information on gang related suspects, crime, and activity from all law enforcement agencies serving Santa Cruz County. The GTF publishes this information in a monthly Gang Intelligence Report. This report is intended to educate and assist line level enforcement staff to become more aware of gang related activities that occur in their area of responsibility. This information can also be of use to identify trends in gang activity and those involved.

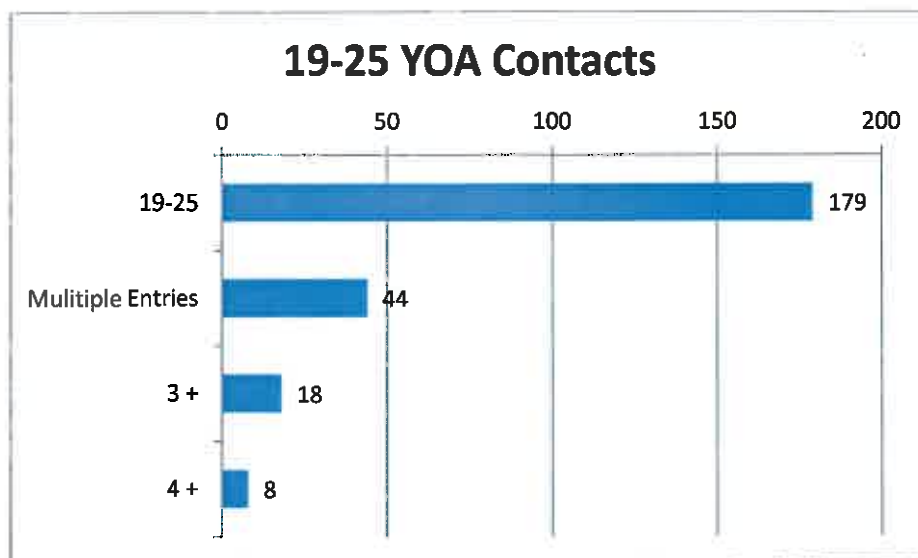


There were 451 subjects listed in the Gang Intel Bulletin during the 2012 year. The chart above shows that 64% of those listed were 25 years of age or younger (25U). Of the 25U group, 38% were 18 years of age or younger (18U). The youngest person listed in the bulletins was 12 years old. Seventy-seven percent (77%) of the 25U group were reported in association with a South County / Watsonville area criminal street gangs. Of those associated to South County / Watsonville gangs 39% were 18U; 62% were 19-25 years of age. This percentage is repeated in the North County / Santa Cruz areas in which 39% fell into the 18U group and 66% 19-25 years of age group.



As previously noted there were 108 subjects in the 18U group. In the 18U group 31% had more than one entry; 16% had more than two entries, and 6% had four or more entries. In 2012 there were 29 subjects (10% of the 25U group) associated to firearm possession and/or use crimes. Of

those associated with firearm violations 34% were in the 18U group. One 16 year-old was involved in three firearm possession cases.



Subjects 19-25 years of age accounted for 62% of the 25U group. In the 19-25 group 25% had multiple bulletin entries, 10% had three or more, and 4% had four or more entries. Of those associated with firearm violations, 66% were in the 19-25 age group.

2012 Homicides in Santa Cruz County

There were 10 homicides reported in Santa Cruz County in 2012. Of the 10 homicides, 5 appear to be gang related. In those 5 cases, 4 involve youth victims between the ages 13 to 21.

A statewide study in 2010, "Lost Youth: A County-by-County Analysis of 2010 California Homicide Victims Ages 10-24" showed that Santa Cruz County ranked 14th in the state in youth homicide victimization. Santa Cruz County's rate of 9.73 per 100,000 residents is above the state average of 8.48 per 100,000 residents. Monterey County ranked 1st in the state with a rate of 24.36 per 100,000.

This study identified 680 homicide victims that were 10-24 years old when killed in 2010. In summary 89% of the victims were male, 53% were Hispanic, 34% black, 7% white, 4% Asian, and 1% noted as "other." In comparison, the study stated, that Hispanic victims were killed at a rate (10.24 per 100,000) more than five times higher than white victims (1.98 per 100,000). In Santa Cruz County, 2012, three of the four youth homicide victims were Hispanic; the other was black.

The 2010 study showed that firearms were the most common weapon used to murder youth. In 2010, 87% of the victims died by gunfire. Of those that were killed by gunfire, 76% were killed with a handgun. In Santa Cruz County, 2012, three of the four youth homicide victims were killed by a handgun; the other died as a result of a stabbing.

Three of the four youth related homicides remains unsolved and under investigation. In the fourth case, three young Hispanic males have been arrested and are pending trial for murder. The ages of the three suspects are 20-21 years of age.

Ahead in 2013



The New Year brought in an increase of gang related activity and violence after a relatively uneventful last quarter of 2012. The increase of gang related graffiti has been noticeable. The concern about the graffiti is that it is not the run of the mill gang tagging. But that it is confrontational or challenging graffiti as noted in the photo above. In the photo a gang from outside the area put their "tag" on a prominent place in a rival's territory. In the "gang life" this would be considered a challenge.



Another way a gang will issue a "challenge" is by crossing out or tagging over the rivals symbols and writing derogatory remarks as noted in the photo to the left.

Already, firearms have been involved in several of this year's gang related cases. On January 18th a 15 year-old gang participant was found in possession of a handgun and arrested; his second such arrest. Later that night an 18 year-old gang participant was shot and killed on 2nd Street, Watsonville; 2013's first homicide.

On January 22nd, a house on Sudden Street was the victim of a drive-by shooting. No one was injured.

On January 24th, a Be On the Lookout (BOL) was broadcasted by Monterey County Sheriff's Office regarding a brown Ford van that was reportedly involved in a shooting in North Monterey County. Later the evening WPD stopped a van in Watsonville that matched that description. Officers contacted three gang participants. They were 15, 17, and 18 years of age. Officers found and seized a shotgun and ammunition from inside the van. Later that evening officers responded to a drive-by shooting on Jasper Way, Watsonville. No injuries were reported. Still

later that night WPD officers attempted to contact a known gang participant just across the county line in Pajaro. The 19 year-old suspect attempted to flee and discard a loaded .357 magnum revolver.

On January 26th, the SCPD responded to a stabbing on Laurel Street, Santa Cruz. In that case a known 28 year-old gang participant was stabbed several times. While investigating the incident at the scene, officers recovered a .25 caliber pistol. Also on January 26th, SCSO deputies responded to a reported stabbing on Calabazas Road, outside of Watsonville. The 27 year-old victim reported he was confronted by three suspects, assaulted and stabbed.

On January 29th, the WPD responded to a report of a shooting on Brewington Avenue, Watsonville. A 21 year-old was confronted by the suspect and shot in the back before the suspect fled. Later on January 29th the WPD and Monterey County Sheriff's Office investigated a stabbing that occurred in Pajaro. The victim in that case was a 25 year-old gang participant.

On January 30th a WPD officer contacted three known gang participants that included an 18 and 20 year-old. The officer found that the 18 year-old gang participant was in possession of a loaded 9mm pistol.

On February 6th, suspects in a vehicle shot at an unknown victim near the Discount Mall on Rodriguez Street. This occurred during day-light business hours. The suspects missed the victim but hit a car parked near-by. All subjects fled before police arrival and there were no known injuries. Also on February 6th, the CPD responded to a report of a person found shot on Cliff Drive. Officers located a known gang participant suffering from a gunshot wound to the leg. Investigating officers found a 9mm pistol was found near-by.

SANTA CRUZ COUNTY GANG TASK FORCE

2013 Year to Date

Gang / Violent Crime

TFC Mario Sulay

5/2/2013

This report was generated by the Santa Cruz County Gang Task Force provides an analysis of gang and violent crime in Santa Cruz County from January 1st through April 30th, 2013.

GANG / VIOLENT CRIME

Santa Cruz County

As reported at the February 7th CJC meeting 2013 had started with a very noticeable increase in gang and violent crime throughout Santa Cruz County. Before the 1st Quarter of the year ended, there were 6 homicides in the county. This includes the murders of Santa Cruz Police Sergeant Baker and Detective Butler. The following is a summary of the 2013 murders to date.

Victim	Age	Means	Location	Status	Agency
Marco Topete	18	Firearm	Public street	Under investigation	WPD
Paul Silva	32	Firearm	Public street	Under investigation	SCPD
Marco Ortega	18	Firearm	High School lot	Under investigation	WPD
Sgt. Baker		Firearm	Susp. residence	(S) killed in shootout	SCPD
Det. Butler		Firearm	Susp. residence	(S) killed in shootout	SCPD
Felipe Reyes	20	Knife	Public street	Suspects arrested 3-Juveniles, 15-17 1-Adult, 20	WPD

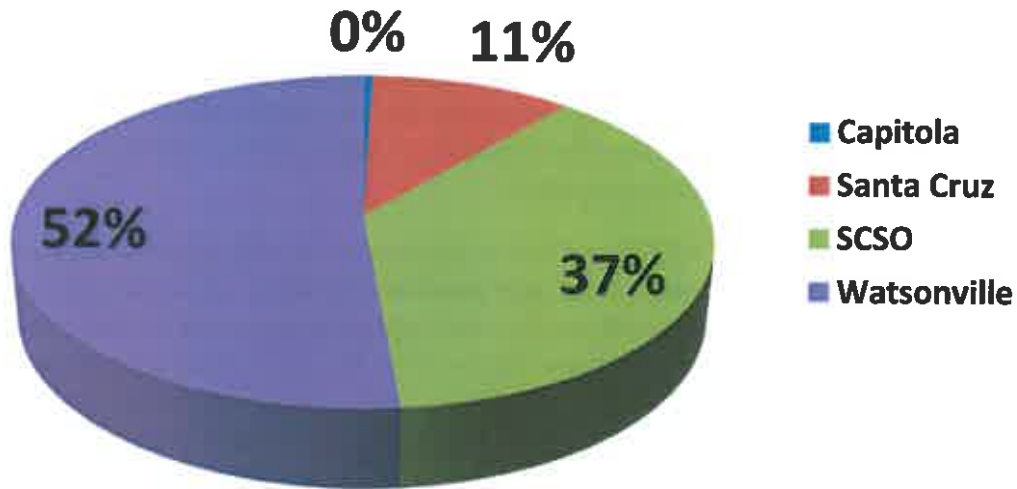
In my February CJC Report I provided information from a statewide 2010 study, "Lost Youth: A County-by-County Analysis of 2010 California Homicide Victims Ages 10-24" conducted by the Violence Policy Center. The 2010 study ranked Santa Cruz County 14th in the state in youth victimization. The study showed that Santa Cruz County recorded 6 victims that were considered youth (10-24 years of age).

In March the Violence Policy Center released the resulted of their 2011 study. This study showed that Santa Cruz County moved up in rank to 10th in the state for youth victimization. However, the raw data showed that Santa Cruz County recorded the same number of youth victims – six. Should the trend of the first quarter of 2013 continue, Santa Cruz County would surpass its youth victimization rates of the past three years¹.

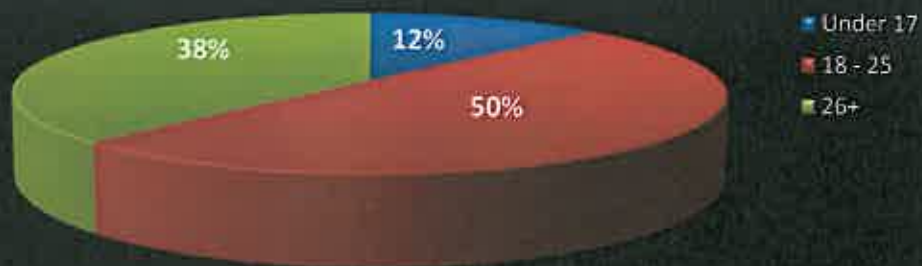
There have been about 178 criminal cases throughout the county that were reported to be gang related since January 1, 2013. These criminal cases resulted in 217 arrests.

¹ In 2012 there were 4 youth homicide victims

**Gang Involved Cases By Agency
January-Apr. 30, 2013**



**Gang Involved Cases by Age Group
January 1-April 30, 2013**



Not only are youth victims of gang related violence they are often involved in perpetrating gang or violent crimes. The chart above shows the breakdown of those involved in gang related crimes. The Under 17 group was involved in 12% of gang related crime. This represents 29 incidents of arrest.

Another indicator that can be used to measure juvenile involvement in gang related crime is the amount of juvenile offenders that have gang related probation terms. Last year there were about 94 juvenile offenders that had gang terms with the Juvenile Probation Department. Currently there are about 140 juvenile offenders with probation terms. This is a 67% increase of juvenile offenders being assigned gang terms.

There have been several cases in 2012 and in the first quarter of 2013 where adult gang members were arrested committing crimes with juvenile offenders. Law enforcement had noticed over the years that when youth are recruited into gang participation they are often mentored by older and adult gang members. Many times this will include being assigned to do "missions" or "jales" with established gang members. These "missions" can and are often violent crimes randomly targeting rival or perceived rival gang members encountered on the street.

In the last two months law enforcement has made several significant high profile arrests involving various gang participants; both adult and juvenile. Since these arrests violent gang crimes has slowed. However, it is important to realize that effective intervention, prevention, and re-entry programs are needed in order to maintain a decline in gang related violence.



2013 Santa Cruz County Mid Year Young Adult Gang Case Data

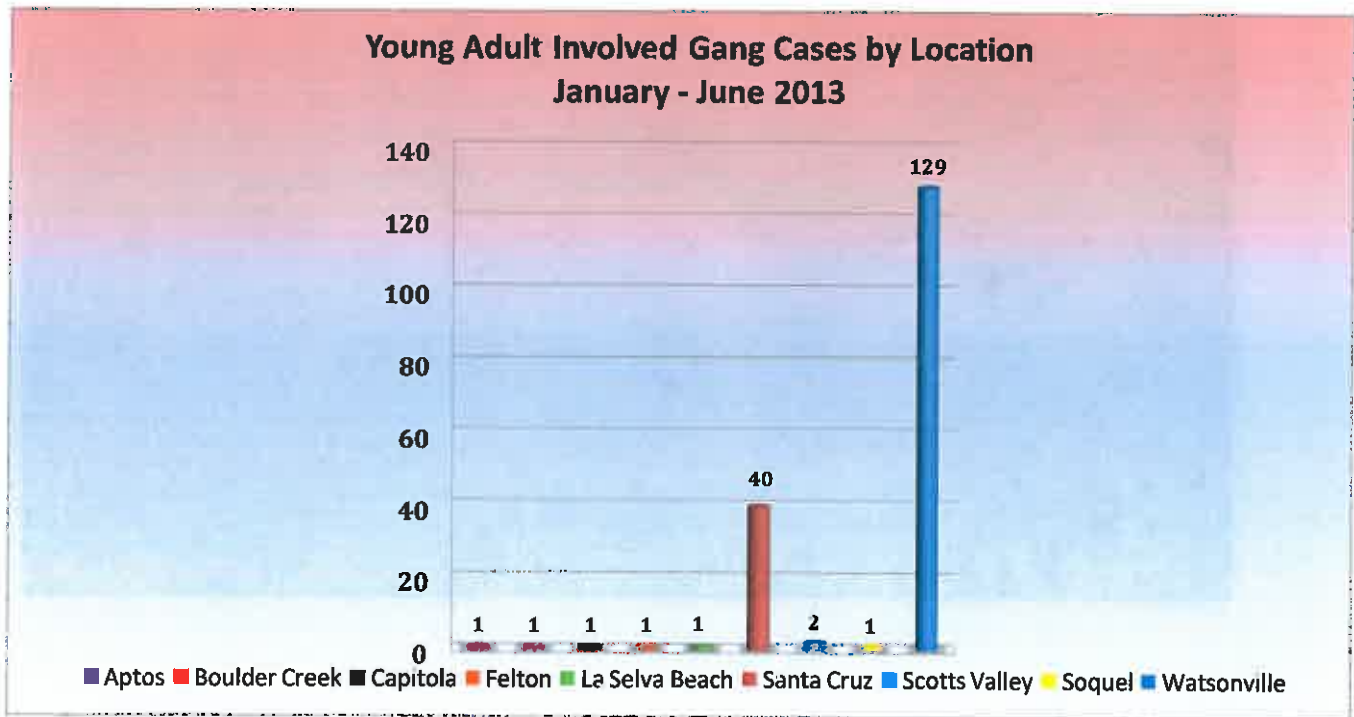
The following information was analyzed from police report data from the records of the Santa Cruz County's four City Police Departments (Capitola, Santa Cruz, Scotts Valley and Watsonville) and the Santa Cruz County Sheriff's Office. The information contained in this report reflects data collected from reports that were classified as "Gang Related" by the reporting officers. This report contains data for the first half of 2013. For the purpose of this report Young Adults are considered as those individuals 18 to 25 years of age.

Cases

- ❖ There were 177 Cases reported as "Gang Related" that involved Young Adults in some way (Arrest/Suspect/Contacted/Mentioned/Victim).
- ❖ In the 177 Cases, there were 359 instances of Young Adult contact by law enforcement in the form of an Arrest, Suspect, Contact, Mention or Victim. This is an average Young Adult contact by law enforcement of 2 Young Adults per case.

Location

- ❖ The majority of Young Adult Involved Gang Cases during the first half of the 2013 took place in Watsonville.
- ❖ Watsonville had 73% of the Cases with Young Adult involvement, Santa Cruz had 23% of the Cases and the remaining 4% of Cases were in various areas in North County.

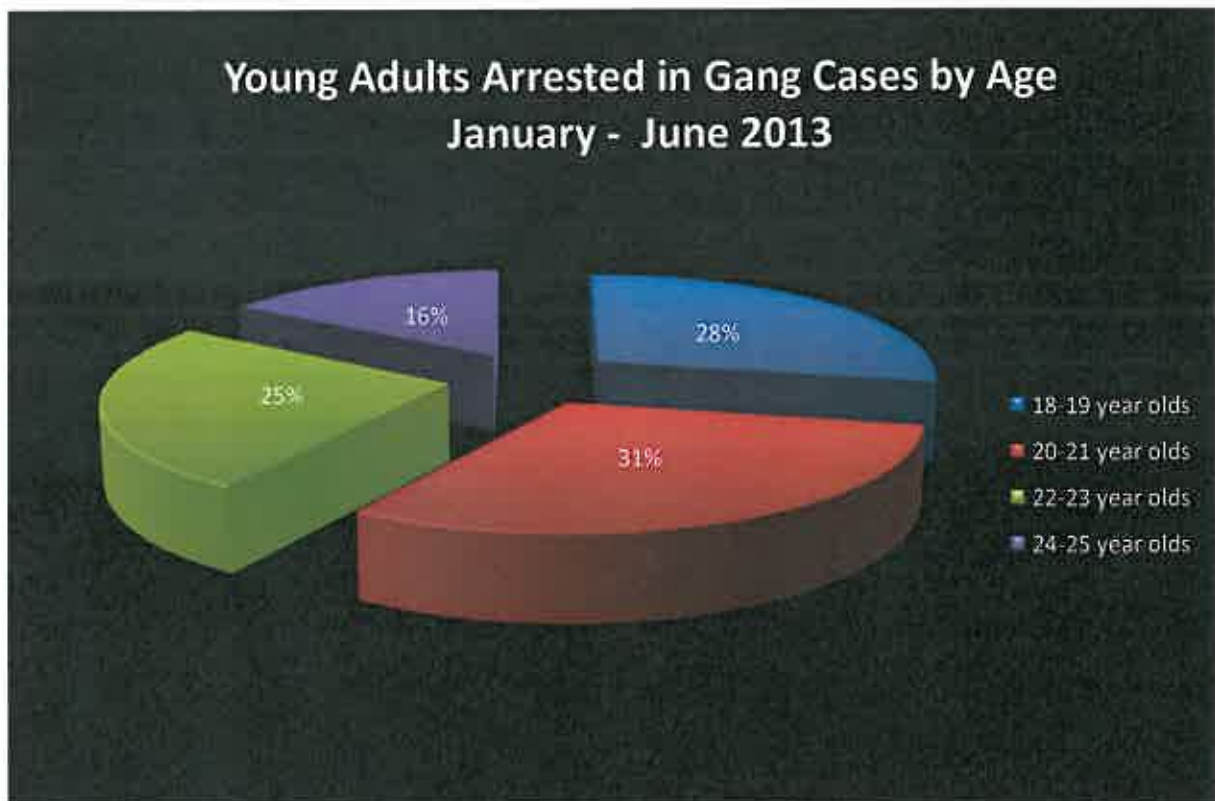


Arrests

- ❖ 134 Young Adults were arrested in the first half of the year in cases considered “Gang Related” by the reporting Officer.
- ❖ 20% of Young Adults arrested in “Gang Related” cases during the six month period (Jan-June 2013) were arrested multiple times.

Age

- ❖ Of the 134 Young Adults arrested:
 - 38 were 18-19 years old at the time of arrest
 - 41 were 20-21 years old at the time of arrest
 - 34 were 22-23 years old at the time of arrest
 - 21 were 24-25 years old at the time of arrest
- ❖ The Chart below depicts the age breakdown of young adults arrested in the first half of the year.



Violations- For the purpose of this report, Violent Crime, Property Crime and Drug Crime are defined as follows: Violent crime includes charges of murder, homicide, robbery, battery, assault, drive by shooting and participation in a criminal street gang, Property crime includes charges of burglary, vandalism and receiving/possession of stolen property and Drug crime includes any charges involving possession of drugs and/or paraphernalia as well as alcohol related charges. Therefore, the data in this report should NOT be compared to Department of Justice UCR crime data.

- ❖ There were a total of 312 Violations committed by Young Adults arrested in Gang Related Cases in the first half of 2013.
- ❖ The highest number of violations for Young Adults in the first half of the year was Violent Crime violations at 25% followed closely by Probation Violations at 21% and Weapons Violations at 20%.
- ❖ The table below shows all the Violations committed by Young Adults that were arrested in cases considered as Gang Related by the arresting Officer between January and June 2013 in Santa Cruz County.

Violations	# of Violations	Percentage
Violent Crime	79	25%
Property Crime	10	3%
Drug/Alcohol	49	16%
Weapons Violations	61	20%
Probation Violations	66	21%
Warrants	16	5%
Other	31	10%
Total	312	100%

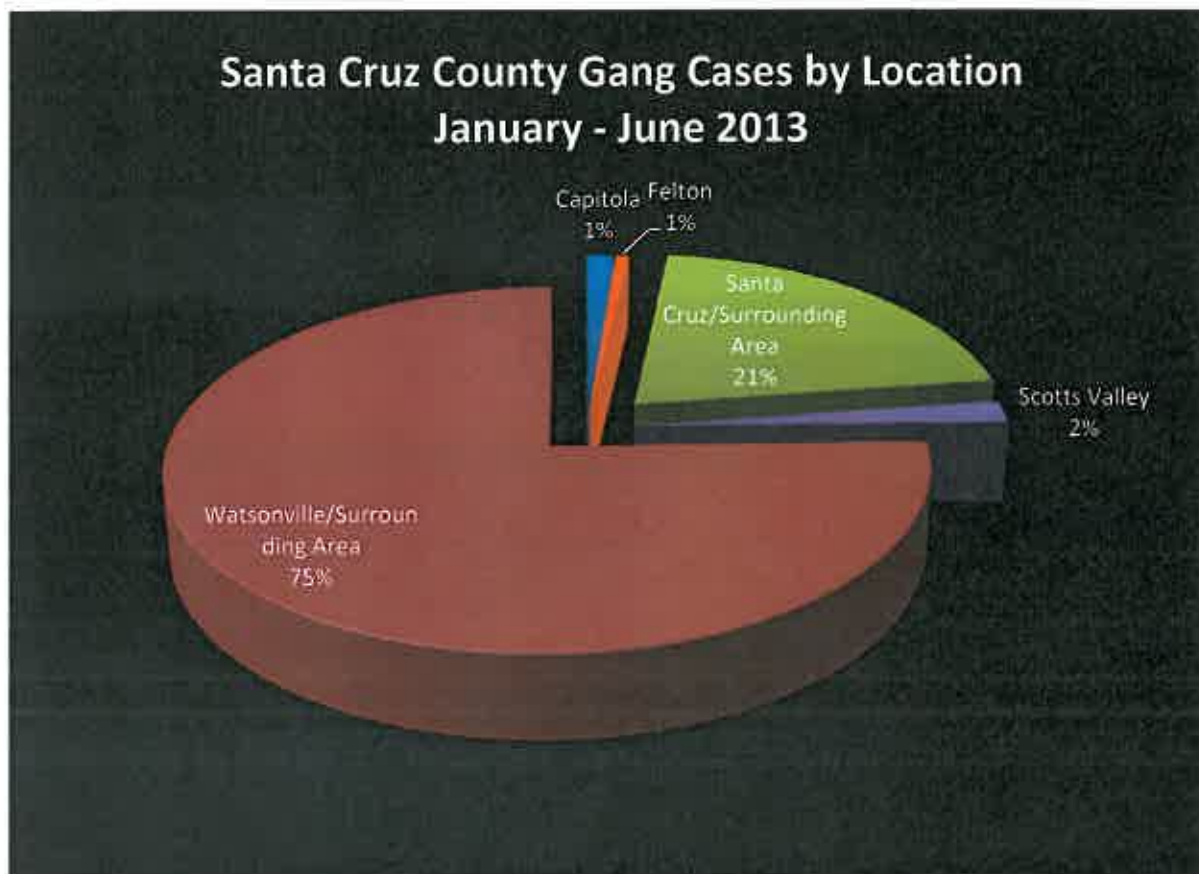
Weapons

- ❖ There were 61 Weapons Violations by Young Adults in Gang Related Cases during the first six months of 2013.
- ❖ 44% of Weapons Seized were knives, 30% were firearms and 26% were Other Weapons (burglary tools, ammunition, etc).

Charts and Notes for SC Public Safety Task Force Meeting 10.2.13

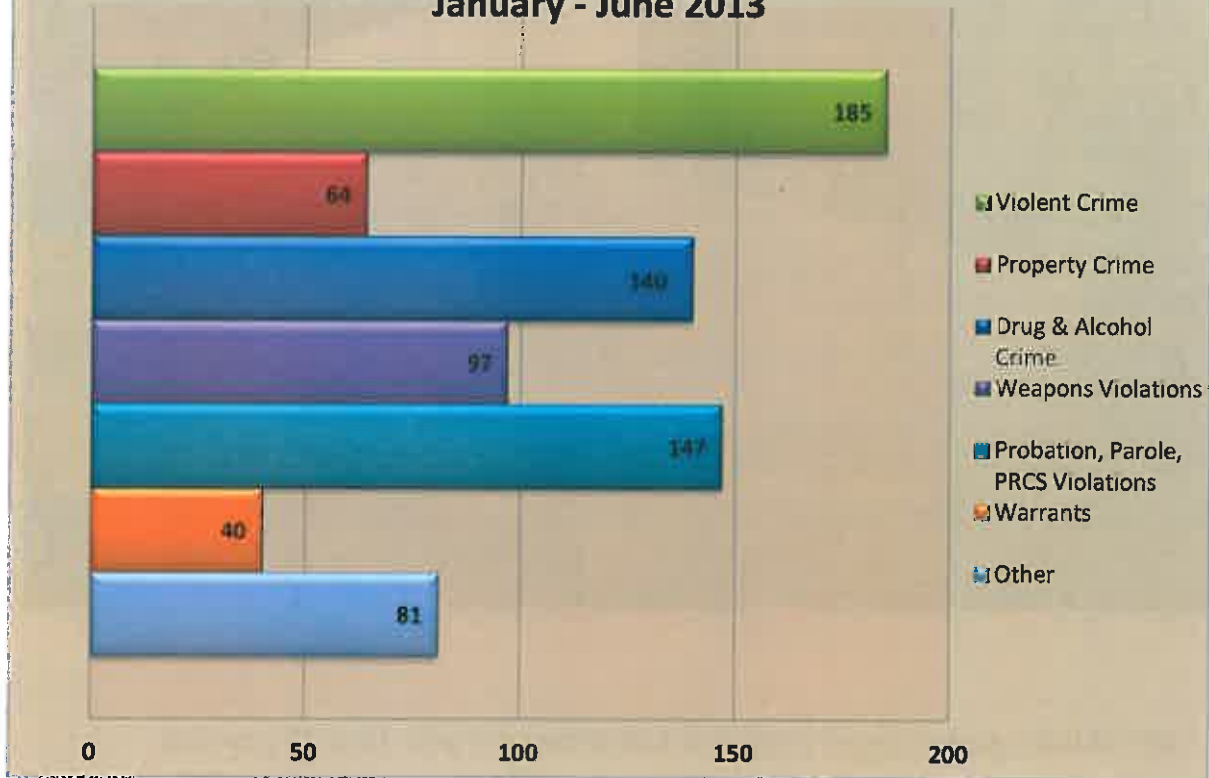
-75% of Gang Cases in the first half of the year occurred in the City of Watsonville and its surrounding area and 21% occur in the City of Santa Cruz and the surrounding area.

-The remaining 4% of cases occur in other parts of North County.



16% (7 of 43) of cases in the City of Santa Cruz had gang members involved that were from the Watsonville area.

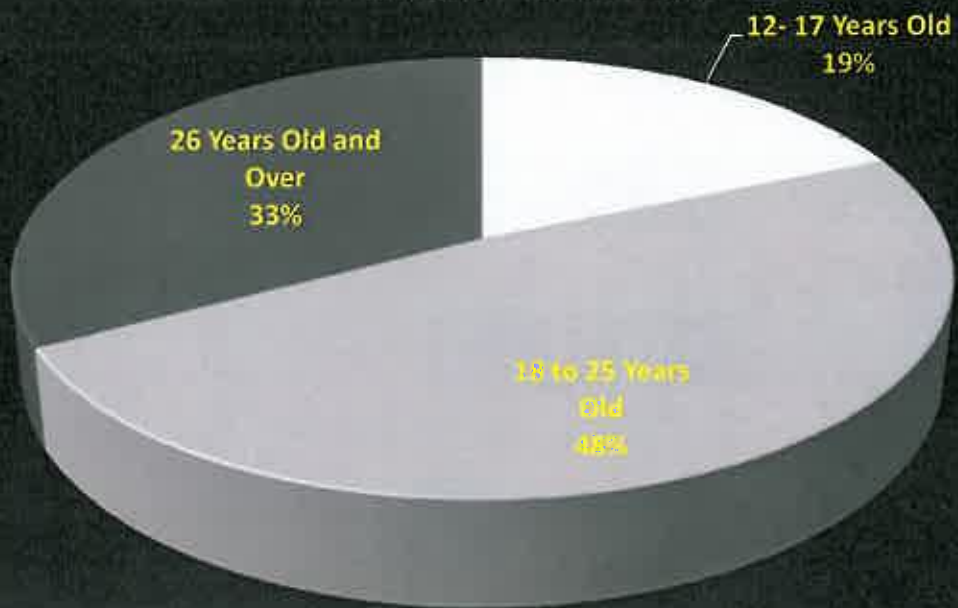
Santa Cruz County Violations in Gang Related Cases January - June 2013



Violent Crime, Property Crime and Drug Crime are defined as follows: Violent crime includes charges of homicide, robbery, battery, assault, drive by shooting and participation in a criminal street gang, Property crime includes charges of burglary, vandalism and receiving/possession of stolen property and Drug crime includes any charges involving possession of drugs and/or paraphernalia as well as alcohol related charges. Therefore, the data in this report should NOT be compared to Department of Justice UCR crime data.

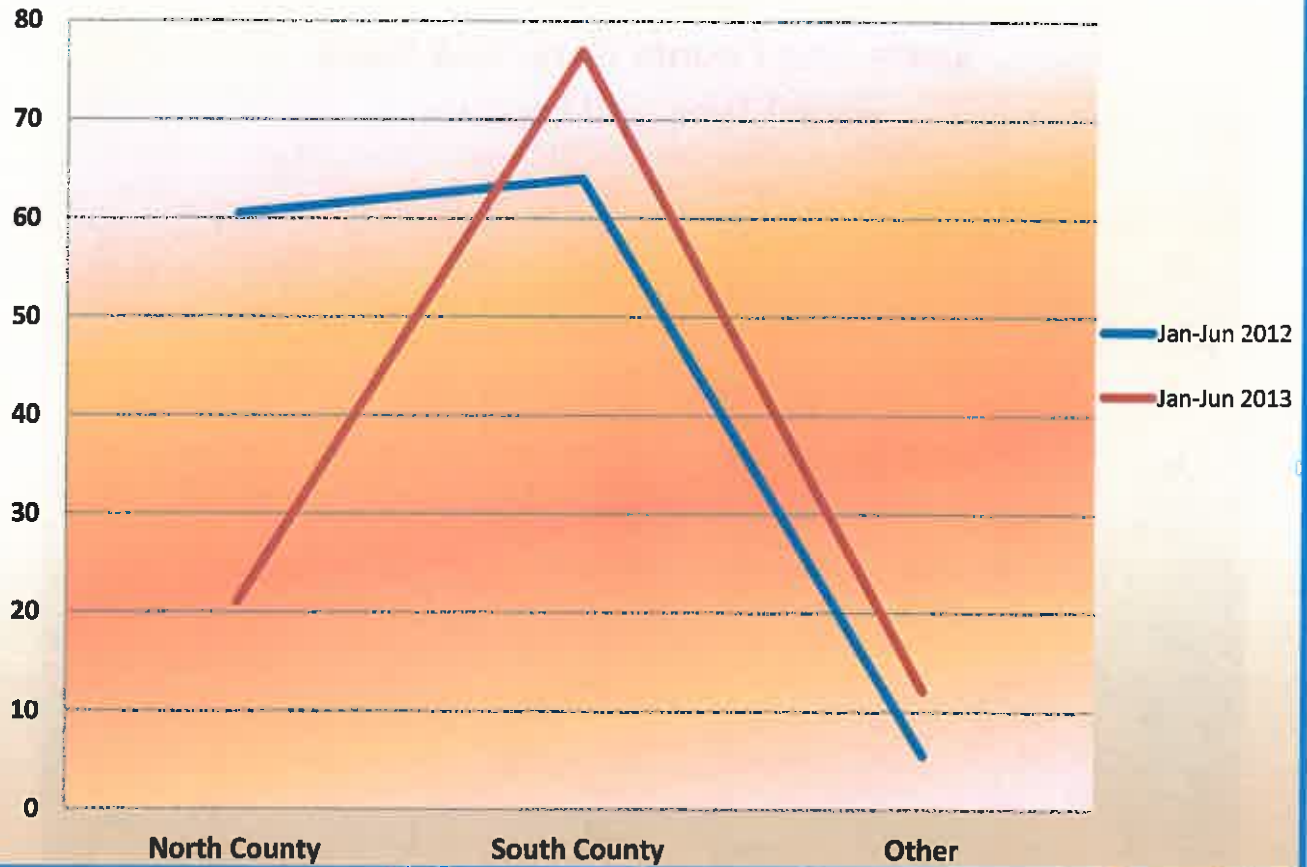
Violation	
Violent Crime	25%
Property Crime	8%
Drug/Alcohol Violation	19%
Weapons Violations	13%
Probation/Parole/PRCS Violations	19%
Warrants	5%
Other	11%

**Santa Cruz County Age of Individuals Arrested
in Gang Related Cases
January - June 2013**



-48% of Individuals arrested in the first half of the year were 18 to 25 years old.

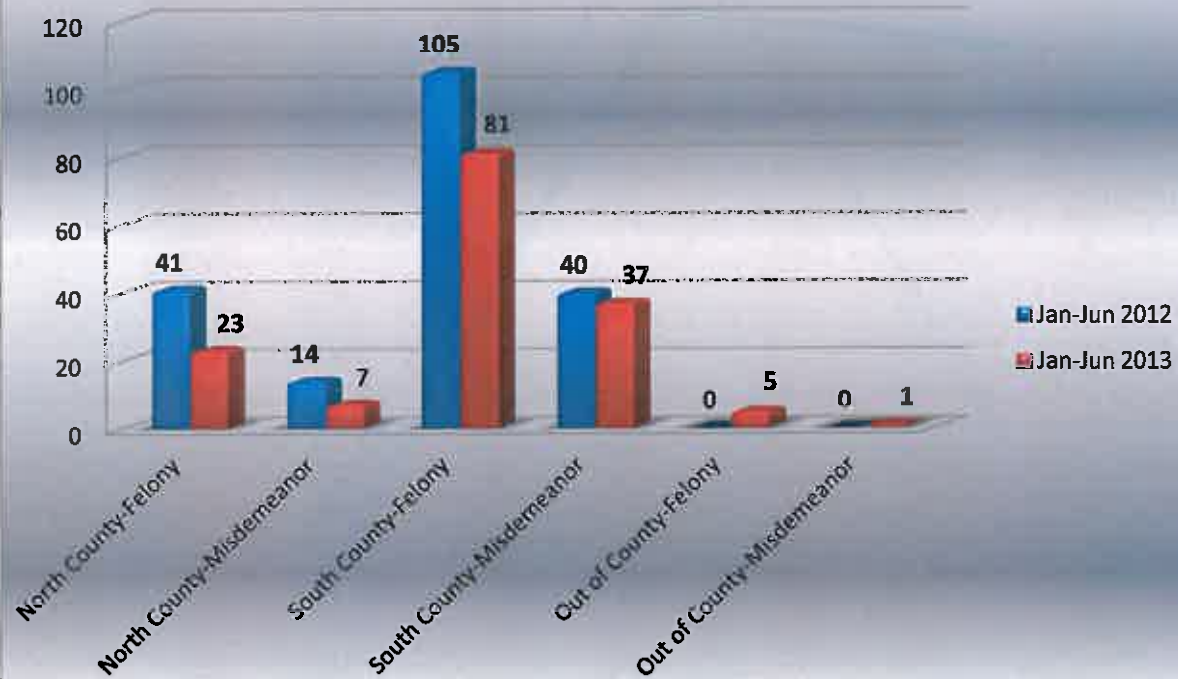
Santa Cruz County Gang Task Force Deployment Areas



Deployment Area	January-June 2012	January- June 2013
North County	60.5	21
South County	64	77
Other	5.5	12

- 65% Decrease in Deployment in North County between Jan-June 2013 and Jan-June 2012.

Santa Cruz County Gang Task Force Arrest Type and Location





Appendix 5

***Office of the Public Defender
Santa Cruz County***

(831) 426-2656
FAX No. (831) 429-5664

LAWRENCE BIGGAM
Public Defender

2103 North Pacific Avenue
Santa Cruz, California 95060

November 5, 2013

Susie -

faxed to: 420-5011

Enclosed is the list I used when Jerry and I made our presentations.

I list the schools or school district they attended - but I do not have graduation info. Frankly, I suspect most dropped out into continuation schools or the street.

The point, though, is this: With respect to our most serious crimes, the vast majority are local people from local families, schools, and neighborhoods. We should not confuse or mix up homelessness with homicide.

Sincerely,



Larry

SNAPSHOT OF PUBLIC DEFENDER HOMICIDES

(These are our homicide cases awaiting trial or sentencing from August 19, 2013 which was the list I used when presenting to the Public Safety Citizen Task Force on September 18, 2013)

JOSE MEZA WF01196	-Watsonville. Pajaro Valley Unified School District (PVUSD)
VEVA VIRGIL WF00472	-raised in Modesto. Moved to Santa Cruz Co. with husband (who had local computer business) in 1996-2000. Separated. Left County and returned in 2005.
MANUEL MEZA WF00741	-Watsonville. PVUSD
IRVYN FLORES F171457	-Watsonville. PVUSD
JAMES OEHLER F19274	-Aptos High + Renaissance High
WENSY SANCHEZ F19538	-graduated Santa Cruz High, attended Cabrillo College
ERIC WEERS F21134	-Soquel High
MARY MILLER M59962 (privately retained)	-long time Santa Cruz resident and Santa Cruz Metro Transit driver
JOHN CLAUER F21566	-long time resident (35+ years)
ALEX RODRIGUEZ F21916	-Watsonville. PVUSD
MICHAEL MILLER F23140	-Harbor High
CHARLES EDWARDS F22711	-released from Atascadero Sate Hospital. Family lives in San Francisco
SHAELYN GONZALES F23764	-Monte Vista Christian High, Watsonville
ISMAEL TORRES F23926	-Watsonville. PVUSD
OSCAR VARGAS F24353	-Watsonville. PVUSD

Continued on next page

SNAPSHOT OF PUBLIC DEFENDER HOMICIDES - Page 2

CESAR ROSALES F25184

-Watsonville. PVUSD

MARCUS BATES F25256

-Santa Cruz High

OSCAR CABRERA F17051

-Watsonville. PVUSD



Appendix 6

Defendant Names

[Home](#)

Name Search

If names appear in red they are AKA (Also Known As) names used by the defendant on the case. You should research further by clicking on the Charge to display the "True Name" on the case.

<u>Name</u>	<u>DOB</u>	<u>Sex</u>	<u>Warrant</u>	<u>Case Number</u>	<u>Filing Date</u>	<u>Count 1 Charge</u>	<u>Def Status</u>
ANDERSON, TINA	02/05/1969	F	NONE	F23762	11/20/2012	PC 187(A)	PROBATION
ANDERSON, TINA	02/05/1969	F	NONE	S0032034	08/31/2012	MCSC I6.04.060(1)(W)	FINE
ANDERSON, TINA	02/05/1969	F	NONE	S0033764	09/17/2012	MCSC I13.04.010	FINE
ANDERSON, TINA	02/05/1969	F	NONE	S0034480	09/17/2012	MCSC I6.04.060(1)(W)	FINE
ANDERSON, TINA	02/05/1969	F	NONE	S0034540	09/17/2012	MCSC I6.04.060(1)(W)	FINE
ANDERSON, TINA	02/05/1969	F	NONE	S0037436	10/10/2012	MCSC I6.36.010(A)(1)	FINE
ANDERSON, TINA	02/05/1969	F	NONE	S0037464	10/10/2012	MCSC I6.36.010(C)	FINE
ANDERSON, TINA	02/05/1969	F	NONE	S0038433	10/19/2012	MCSC I6.36.010(B)	FINE
ANDERSON, TINA	02/05/1969	F	NONE	S0038605	10/19/2012	MCSC I6.36.010(A)(1)	FINE
ANDERSON, TINA	02/05/1969	F	NONE	S0039312	10/19/2012	MCSC I6.04.060(1)(W)	FINE
ANDERSON, TINA	02/05/1969	F	NONE	S0039652	10/26/2012	MCSC I6.04.060(1)(W)	FINE
ANDERSON, TINA	02/05/1969	F	NONE	S0040026	10/26/2012	MCSC I8.14.200(1)(A)	FINE
ANDERSON, TINA	02/05/1969	F	NONE	S0040411	10/29/2012	VC I21650.1	FINE
ANDERSON, TINA	02/05/1969	F	NONE	S0041052	11/05/2012	MCSC I10.68.110	FINE
ANDERSON, TINA	02/05/1969	F	NONE	S0042094	11/15/2012	VCB I22450(A)	FINE
ANDERSON, TINA	02/05/1969	F	NONE	TR0049887	06/29/2011	MCSC I13.04.010	FINE
ANDERSON, TINA	02/05/1969	F	NONE	TR0057901	08/30/2011	MCSC I8.14.200(1)(E)	FINE
ANDERSON, TINA	02/05/1969	F	NONE	TR0059158	09/08/2011	MCSC I6.36.010(A)(1)	FINE
ANDERSON,	02/05/1969	F	NONE	TR0065622	10/31/2011	MCSC I6.36.010(C)	FINE

TINA							
ANDERSON, TINA	02/05/1969	F	NONE	TR0065674	10/31/2011	MCSC I6.36.010(C)	FINE
ANDERSON, TINA	02/05/1969	F	NONE	TR0065748	10/31/2011	MCSC I6.36.010(C)	FINE
ANDERSON, TINA	02/05/1969	F	NONE	TR023727	11/22/2010	MCSC I13.04.010	FINE

21 M1404
MURDER

Defendant Names

[Home](#)

Name Search

If names appear in red they are AKA (Also Known As) names used by the defendant on the case. You should research further by clicking on the Charge to display the "True Name" on the case.

[1](#) [2](#) [Next 7](#)

<u>Name</u>	<u>DOB</u>	<u>Sex</u>	<u>Warrant</u>	<u>Case Number</u>	<u>Filing Date</u>	<u>Count 1 Charge</u>	<u>Def Status</u>
HUDSON, MICHAEL	02/10/1971	M	NONE	F20638	03/24/2011	PC F148.10(A)	CLOSED
HUDSON, MICHAEL	02/10/1971	M	NONE	F20727	04/14/2011	PC F422	PENDING-ADJ
HUDSON, MICHAEL	02/10/1971	M	ISSUED	M53539	05/27/2010	PC 415.1	WARRANT
HUDSON, MICHAEL	02/10/1971	M	ISSUED	M60049	05/17/2011	PC 484(A)	WARRANT
HUDSON, MICHAEL	02/10/1971	M	NONE	S0012205	04/09/2012	MCSC 19 12.030	FINE
HUDSON, MICHAEL	02/10/1971	M	NONE	S0017838	05/03/2012	MCSC 113.04.010	FINE
HUDSON, MICHAEL	02/10/1971	M	NONE	S0020594	05/29/2012	MCSC 113.04.010	FINE
HUDSON, MICHAEL	02/10/1971	M	NONE	S0029238	08/07/2012	MCSC 113.04.010	FINE
HUDSON, MICHAEL	02/10/1971	M	NONE	S0031151	08/24/2012	MCSC 16.36.010(B)	FINE
HUDSON, MICHAEL	02/10/1971	M	NONE	S0033766	09/17/2012	MCSC 113.04.011(C)	FINE
HUDSON, MICHAEL	02/10/1971	M	NONE	S0034794	09/21/2012	MCSC 113.04.010	FINE
HUDSON, MICHAEL	02/10/1971	M	NONE	S0035561	09/28/2012	MCSC 19 50.010	FINE
HUDSON, MICHAEL	02/10/1971	M	NONE	S0036506	10/02/2012	MCSC 110.68.110	FINE
HUDSON, MICHAEL	02/10/1971	M	NONE	S0037538	10/10/2012	MCSC 16.36.010(C)	FINE
HUDSON, MICHAEL	02/10/1971	M	NONE	S0037734	10/10/2012	MCSC 16.36.010(A) (1)	FINE
HUDSON, MICHAEL	02/10/1971	M	NONE	S0043422	11/30/2012	MCSC 16.36.010(A) (1)	FINE
HUDSON, MICHAEL	02/10/1971	M	NONE	S0043481	11/30/2012	MCSC 113.04.010	FINE

HUDSON, MICHAEL	02/10/1971	M	NONE	S0050399	02/19/2013	MCSC 19.12.030	ACTIVE
HUDSON, MICHAEL	02/10/1971	M	NONE	S0050483	02/19/2013	MCSC 16.36.010(A) (1)	ACTIVE
HUDSON, MICHAEL	02/10/1971	M	NONE	S0050485	02/19/2013	MCSC 16.36.010(A) (1)	ACTIVE
HUDSON, MICHAEL	01/11/1962	M	NONE	S0065579	07/16/2013	VC 14000(A)	ACTIVE
HUDSON, MICHAEL	02/10/1971	M	NONE	TR0053743	08/02/2011	CO 110.16.040	FINE
HUDSON, MICHAEL	02/10/1971	M	NONE	TR0059296	09/06/2011	MCSC 19.50.010	FINE
HUDSON, MICHAEL	02/10/1971	M	NONE	TR0059630	09/09/2011	VCB 121657	FINE
HUDSON JR, MICHAEL	02/10/1971	M	NONE	S0019424	05/21/2012	MCSC 110.68.030	FINE
HUDSON, MICHAEL BALGENE	02/10/1971	M	NONE	S0006903	03/15/2012	MCSC 16.36.010(A) (1)	FINE
HUDSON, MICHAEL BENNETT	03/05/1961	M	NONE	M23894	06/25/2004	VC 23152(A)	CLOSED
HUDSON, MICHAEL J	01/11/1962	M	RECALLED	SCT043840	03/25/2009	VC 15204(A)	CLOSED
HUDSON, MICHAEL JOHN	01/11/1962	M	NONE	4SM014762	03/08/2004	VC 14000(A)	CLOSED
HUDSON, MICHAEL JOHN	01/11/1962	M	NONE	4SM019526	04/09/2004	VC 14000(A)	CLOSED
HUDSON, MICHAEL JOHN	01/11/1962	M	RECALLED	SCT076562	02/09/2010	VC 14000(A) (1)	CLOSED
HUDSON, MICHAEL RICHARD	05/04/1946	M	NONE	M63043	11/02/2011	PC 1484	CLOSED
HUDSON, MICHAEL RICHARD	05/04/1946	M	ISSUED	M72306	03/28/2013	PC 484(A)	WARRANT
HUDSON, MICHAEL RICHARD	05/04/1946	M	NONE	SCT054762	07/06/2009	VC 124603(B)	CLOSED
HUDSON, MICHAEL UMGENE	02/10/1971	M	NONE	S0032951	09/07/2012	MCSC 16.12.035	FINE
HUDSON, MICHAEL V	02/10/1971	M	NONE	S0017809	05/03/2012	MCSC 113.04.010	FINE
HUDSON, MICHAEL V	02/10/1971	M	NONE	S0038422	10/19/2012	MCSC 16.36.010(A) (1)	FINE
HUDSON JR, MICHAEL V	02/10/1971	M	NONE	S0018295	05/08/2012	MCSC 113.04.010	FINE
HUDSON JR,							

MICHAEL VALGANE	02/10/1971	M	NONE	S0033200	09/11/2012	MCSC 113.04.010	FINE
HUDSON, MICHAEL VALGEA	02/10/1971	M	NONE	S0010395	03/29/2012	MCSC 113.04.011(C)	FINE
HUDSON, MICHAEL VALGENE	02/10/1971	M	NONE	F21178	07/19/2011	HS F11377(A)	ACTIVE
HUDSON, MICHAEL VALGENE	02/10/1971	M	NONE	F23763	11/20/2012	PC F245(A)(1)	ACTIVE
HUDSON, MICHAEL VALGENE	02/10/1971	M	NONE	M61983	09/02/2011	BP 4060	CLOSED
HUDSON, MICHAEL VALGENE	02/10/1971	M	NONE	M64168	01/09/2012	PC 484(A)	CLOSED
HUDSON, MICHAEL VALGENE	02/10/1971	M	NONE	M70020	11/13/2012	BP 4140	CLOSED
HUDSON, MICHAEL VALGENE	02/10/1971	M	NONE	S0006110	03/13/2012	MCSC 16.36.010(A) (1)	FINE
HUDSON, MICHAEL VALGENE	02/10/1971	M	NONE	S0012897	04/11/2012	CO 110.16.040	FINE
HUDSON, MICHAEL VALGENE	02/10/1971	M	NONE	S0014718	04/17/2012	MCSC 113.04.010	FINE
HUDSON, MICHAEL VALGENE	02/10/1971	M	NONE	S0042778	11/20/2012	HS 111357(B)	FINE
HUDSON, MICHAEL VALGENE	02/10/1971	M	NONE	TR0059044	09/06/2011	MCSC 16.36.010(B)	FINE

1 2 Next 7

New Defendant Search

HUDSON

Defendant Names

[Home](#)

Name Search

If names appear in red they are AKA (Also Known As) names used by the defendant on the case. You should research further by clicking on the Charge to display the "True Name" on the case.

[Previous 50](#) [1](#) [2](#)

<u>Name</u>	<u>DOB</u>	<u>Sex</u>	<u>Warrant</u>	<u>Case Number</u>	<u>Filing Date</u>	<u>Count 1 Charge</u>	<u>Def Status</u>
HUDSON, MICHAEL VALGENE	02/10/1971	M	NONE	TR0065812	10/31/2011	MCSC 13.36.010 (A)(1)	FINE
HUDSON JR, MICHAEL VALGENE	02/10/1971	M	NONE	S0034489	09/17/2012	MCSC 19 12.030	FINE
HUDSON JR, MICHAEL VALGENE	02/10/1971	M	NONE	S0037772	10/10/2012	MCSC 16.04.060 (1)(W)	FINE
HUDSON JR, MICHAEL VALGENE	02/10/1971	M	NONE	S0042770	11/20/2012	MCSC 110.36.041	FINE
HUDSON JR, MICHAEL VALGENE	02/10/1971	M	NONE	TR0032757	02/09/2011	MCSC 19.12.030	FINE
HUDSON JR, MICHAEL VALGENE	02/10/1971	M	NONE	TR0035105	02/23/2011	VC 121453(A)	FINE
HUDSON JR, MICHAEL VALGENE	02/10/1971	M	NONE	TR004515	06/29/2010	MCSC 113.08.030	FINE

[Previous 50](#) [1](#) [2](#)
[New Defendant Search](#)

Defendant Names

[Home](#)

Name Search

If names appear in red they are AKA (Also Known As) names used by the defendant on the case. You should research further by clicking on the Charge to display the "True Name" on the case.

[1](#) [2](#) [Next 5](#)

<u>Name</u>	<u>DOB</u>	<u>Sex</u>	<u>Warrant</u>	<u>Case Number</u>	<u>Filing Date</u>	<u>Count 1 Charge</u>	<u>Def Status</u>
[REDACTED]	[REDACTED]	M	RECALLED	6SM025802	06/26/2006	VC 122350	CLOSED
AKA - WEILAND, JASON	07/21/1981	M	RECALLED	M68979	09/17/2012	HS 11364.1(A)	CLOSED
WEILAND, JASON	07/21/1981	M	NONE	S0029535	08/10/2012	MCSC 18.14.200(1)(E)	FINE
WEILAND, JASON	07/21/1981	M	NONE	S0029546	08/10/2012	MCSC 16.04.060(1)(S)	FINE
WEILAND, JASON	07/21/1981	M	NONE	S0034470	09/17/2012	MCSC 113.04.010	FINE
WEILAND, JASON	07/21/1981	M	NONE	S0037408	10/10/2012	MCSC 16.36.010(A)(1)	FINE
WEILAND, JASON	07/21/1981	M	NONE	S0042339	11/20/2012	MCSC 18.14.200(1)(A)	FINE
WEILAND, JASON	07/21/1981	M	NONE	S0042776	11/20/2012	MCSC 110.68.030	FINE
WEILAND, JASON	09/21/1981	M	NONE	S0050427	02/19/2013	MCSC 16.36.010(C)	ACTIVE
WEILAND, JASON	07/21/1981	M	NONE	TR004838	07/01/2010	MCSC 18.16.030	FINE
WEILAND, JASON	07/21/1981	M	NONE	TR006138	07/12/2010	MCSC 19.50.012(B)	FINE
WEILAND, JASON M	07/21/1981	M	NONE	S0041209	11/08/2012	VC 121201(D) (2)	FINE
WEILAND, JASON MICHAEL	07/21/1981	M	NONE	F23766	11/20/2012	PC 187(A)	ACTIVE
WEILAND, JASON MICHAEL	07/21/1981	M	RECALLED	M68979	09/17/2012	HS 11364.1(A)	CLOSED
WEILAND, JASON MICHAEL	07/21/1981	M	ISSUED	M69321	10/05/2012	HS 11364.1(A)	WARRANT
WEILAND, JASON MICHAEL	07/21/1981	M	NONE	S0031210	08/24/2012	MCSC 110.36.041	FINE
WEILAND, JASON MICHAEL	07/21/1981	M	NONE	S0043434	11/30/2012	MCSC 16.36.010(B)	FINE
WEILAND, JASON MICHAEL	07/21/1981	M	NONE	TR002280	06/18/2010	MCSC 18.14.200	FINE

WEILAND, JASON MICHAEL	07/21/1981	M	NONE	TR004812	07/01/2010	MCSC 16.04.060(1)(W)	FINE
WEILAND, JASON MICHAEL	07/21/1981	M	NONE	TR008670	07/22/2010	MCSC 16.36.010(B)	FINE
WEILAND, LATHER JOSEPH	03/14/1972	M	NONE	SCT033086	12/01/2008	MCSC 19.50.020	CLOSED
WEILAND, MICHAEL	08/25/1954	M	NONE	7SZ003060	08/13/2007	MCSC 16.36.010(C)	FINE
WEILAND, MICHAEL RICHARD	08/25/1954	M	RECALLED	3SZ024031	10/06/2003	MCSC 16.36.010(B)	CLOSED
WEILAND, MICHAEL RICHARD	08/25/1954	M	RECALLED	3SZ029941	11/10/2003	MCSC 19.60.010	CLOSED
WEILAND, MICHAEL RICHARD	08/25/1954	M	RECALLED	4SM000988	11/26/2003	VC 121201(D)	CLOSED
WEILAND, MICHAEL RICHARD	08/25/1954	M	RECALLED	4SM013437	02/26/2004	MCSC 110.68.030	CLOSED
WEILAND, MICHAEL RICHARD	08/25/1954	M	RECALLED	4SZ001763	12/04/2003	MCSC 16.36.010(B)	CLOSED
WEILAND, MICHAEL RICHARD	08/25/1954	M	RECALLED	4SZ007096	01/20/2004	MCSC 19.50.016	CLOSED
WEILAND, MICHAEL RICHARD	08/25/1954	M	RECALLED	4SZ015659	03/15/2004	MCSC 19.12.030	CLOSED
WEILAND, MICHAEL RICHARD	08/25/1954	M	NONE	7SM001615	01/08/2007	VC 121461.5	FINE
WEILAND, MICHAEL RICHARD	08/25/1954	M	NONE	7SM013594	06/06/2007	VC 21200.5	ACTIVE
WEILAND, MICHAEL RICHARD	08/25/1954	M	NONE	7SM015973	07/09/2007	VCB 121453(A)	FINE
WEILAND, MICHAEL RICHARD	08/25/1954	M	NONE	7SM017450	08/01/2007	VCB 122450(A)	FINE
WEILAND, MICHAEL RICHARD	08/25/1954	M	NONE	7SZ001069	04/10/2007	MCSC 16.36.010(C)	ACTIVE
WEILAND, MICHAEL RICHARD	08/25/1954	M	NONE	7SZ004682	11/28/2007	MCSC 113.04.010	FINE
WEILAND, MICHAEL RICHARD	08/25/1954	M	NONE	F00985	07/06/2000	PC 1551.1	CLOSED
WEILAND, MICHAEL RICHARD	08/25/1954	M	NONE	F02876	06/05/2001	PC 1551.1	CLOSED

Defendant Names

[Home](#)

Name Search

If names appear in red they are AKA (Also Known As) names used by the defendant on the case. You should research further by clicking on the Charge to display the "True Name" on the case.

<u>Name</u>	<u>DOB</u>	<u>Sex</u>	<u>Warrant</u>	<u>Case Number</u>	<u>Filing Date</u>	<u>Count 1 Charge</u>	<u>Def Status</u>
MOFFETT, SAMANTHA	07/14/1994	F	NONE	S0051938	02/28/2013	MCSC 19.60.010(A)	ACTIVE
MOFFETT, SAMANTHA PAIGE	07/14/1994	F	NONE	S0041063	11/05/2012	MCSC 113.04.010	FINE
MOFFETT, SAMANTHALYN	07/14/1994	F	NONE	S0042374	11/20/2012	MCSC 110.36.041	FINE
MOFFETT, SAMANTHALYNE	07/14/1994	F	NONE	S0050456	02/19/2013	MCSC 16.36.010(A) (1)	ACTIVE
MOFFETT, SAMANTHALYNN	07/14/1994	F	NONE	S0048767	01/29/2013	MCSC 110.36.041	FINE
MOFFETT, SAMANTHALYNN	07/14/1994	F	NONE	S0049371	02/01/2013	MCSC 16.36.010(C)	FINE
MOFFETT, SAMANTHALYNN PAIGE	07/14/1994	F	NONE	F24025	01/09/2013	HS F11377 (A)	CLOSED
MOFFETT, SAMANTHALYNN PAIGE	07/14/1994	F	RECALLED	F24310	02/27/2013	HS F11377 (A)	PENDING-ADJ
MOFFETT, SAMANTHALYNN PAIGE	07/14/1994	F	ISSUED	M70968	01/10/2013	PC 484(A)	WARRANT
MOFFETT, SAMANTHALYNN PAIGE	07/14/1994	F	NONE	M73884	06/24/2013	PC 496(A)	PROBATION

MURDER

Testimony of Tina Anderson
June 25, 2013

during preliminary hearing in People v. Long

9 Different area. How old are you?

10 A. 44.

11 Q. How far did you go in school?

12 A. Ten years.

13 Q. And I'm sorry, I don't know what the equivalent
14 would be in America. Is that the same as college, for
15 example?

16 A. No.

17 Q. Is it the same as high school?

18 A. Yes.

19 Q. So you finished high school?

20 A. Yes.

21 Q. And when was the last time you were living in
22 Poland?

23 A. What?

24 Q. I'm sorry. It's not Poland.

25 MR. DUDLEY: Denmark?

26 THE WITNESS: Denmark.

1 THE COURT: Pardon me. Thank you.

2 Q. Denmark. When was the last time you were
3 living in Denmark?

4 A. Almost three years now.

5 Q. When you left Denmark, where did you go?

6 A. United States.

7 Q. Where in the United States?

8 A. Santa Cruz.

9 Q. How did you learn about Santa Cruz?

10 A. Friends.

11 Q. And you indicated you had been homeless for
12 three years and in Santa Cruz for two years. Where were
13 you before Santa Cruz?

14 A. I was in Santa Cruz. I came here September the
15 2nd, 2010.

16 Q. How did you plan to support yourself?

17 A. I don't know.

18 Q. So why did you come here if you had no means of
19 support?

20 A. I was visiting.

21 Q. Pardon me?

22 A. I was visiting somebody.

23 Q. Someone else who was homeless?

24 A. Yeah.

25 THE COURT: All right. These are not
26 necessarily related to the issues presented to the jury,¹⁰⁵



Appendix 7

18 Nov 2013

Dear City Council Members,

Thank you for the opportunity to serve on the Public Safety Task Force. I leave impressed by the constructive and respectful discourse within the Task Force and during public comments, and impressed by the excellent support provided by City staff. Thanks to everyone involved.

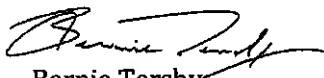
I also leave concluding that we, the Santa Cruz community, have failed our most vulnerable by creating an environment with too many opportunities for crime, addiction and other forms of antisocial behavior and too few incentives for individual reform. I now feel that the main structural contributions to this poor environment are, in order of importance:

1. **We have too few police, they don't adequately enforce existing laws and they don't enforce most laws in natural/greenbelt areas.** The average force size for a city of 60,000 is 138, our is less than 90! Existing laws, especially quality of life crimes, illegal camping and public drug use are rarely enforced. SCPD conducts only limited enforcement in parks and natural areas. Consequently, the chance of getting caught breaking the law in Santa Cruz is too low.
2. **Our judicial system does not sentence offenders to jail time for large classes of crimes, has little or no contact with adults on probation or parole and doesn't have enough jail space.** Consequently, jail time is not available as a deterrent for many repeat offenders, nor are short jail stays (several days to several months) being used to provide the demonstrated benefit of an adult timeout that allows for reflection and reform.
3. **Our community has confused tolerance of different lifestyles with acceptance of illegal behavior including illegal camping, antisocial behavior and public drug use.** Consequently, suspicious behavior and illegal activity are under-reported, many public spaces have been ceded to antisocial groups, and substance abuse rates are high.
4. **Our social service sector has been too narrowly focused on short-term benefits.** Many services are potentially enabling and have other unintended consequences such as attracting homeless and mentally ill to Santa Cruz and concentrating them in areas adjacent to services. This contributes to Santa Cruz having one of the highest per capita homeless populations in California.

The three most important things the City Council can do are:

1. Build the SCPD force to ≥ 120 officers, institute a "broken windows" policy focused on park/natural areas, and conduct a detailed external review.
2. Create a City Department of Public Safety with the technical expertise needed to implement a comprehensive approach to public safety.
3. Institute a public safety tax, dedicated primarily to enforcement, and to fund more police, dedicated City staff and implementation of other Taskforce recommendations.

Sincerely,


Bernie Tershy

For the past 6 months, I've had the honor and the privilege to serve my community on the citizens public safety task force. This 6-month commitment to help improve public safety was at times difficult and sometimes contentious, but ultimately an enlightening and rewarding experience for me.

I want to thank all of the other task force members for their personal commitment to this project, and while we sometimes disagreed, I want to say I have the utmost respect for their opinion and their commitment to public service. I also want to thank and acknowledge the vast number of panel speakers who volunteered their time to give us their unique perspectives on public safety. I want to also thank Fred Keeley for his role as a process moderator and facilitator, his mild and respectful demeanor set the tone for the most difficult part of the process. I also want to acknowledge and thank Susie O'Hara, who worked tirelessly behind the scenes to support the needs of the task force and did an outstanding job project managing a very difficult and important process to the community. And I want to thank the community members that came to our meetings, spoke at the public comments meetings, emailed their concerns, and supported us throughout this process with your feedback and concerns.

While the final report highlights a number of particular public safety issues, I feel a need to address an issue that isn't called out specifically in the final report. Collaboration. I feel it's the most important thing we can do to improve public safety in Santa Cruz. Collaborate better. One of the challenges this task force faced was the fact that each member brought their own ideology and "agenda" to the group. Yet we found a way to work together on "controversial" issues in a respectful, civil manner and find consensus and common ground on a large number of ideas and suggestions. To me, this is the most encouraging thing I will take away here. My hope is that all of the other agencies and groups discussed and mentioned in this final report can show the same respect and civility to implement these ideas and try to find creative, collaborative solutions to our public safety issues. I hope that the city and the county can better work together to address a number of concerns outlined in this final report. I hope that the county courts, the county jail system, county probation, local social service providers, and local law enforcement organizations can come together and find common ground and a sense of urgency to implement the findings of this final report. And I urge the community at large to come together and support their efforts and do more to engage with them on finding applicable solutions as needed.

-Steve Schlicht

Dear Mayor Bryant and members of the City Council,

I would like to thank you for the opportunity to serve on the public safety task force. This has been an enlightening and industrious process. The task force members represented a broad spectrum of knowledge, experience, and perspective, which played a vital role in our process. With these differences and resulting polarization, I believe that we all joined the task force with the same goal: safety for all in the city of Santa Cruz.

After serving on the task force, I recognize that there are many paths that can lead to safety in our community, or anywhere. We cannot point fingers or blame one entity, group, or system, declaring that this system has failed our community. As a community, we are all responsible for creating an environment that is safe for all. I trust that our elected public officials, the City Council and the Board of Supervisors, will be able to work together towards an outcome that will benefit both the city and county.

When we began the process, our task was to explore the deep rooted issues affecting public safety in our community. We discussed, and agreed, about the importance of focusing on behavior, rather than status. A crime is a crime, regardless of a person's address, lack thereof, or socioeconomic status. Over the last 6 months, we agreed that many issues affect public safety. During our deliberations, personal perception and opinion drove many discussions and detracted from a focus on violent crime, gang related crime, and violence against women. We learned that the SCPD is burdened by numerous calls for service involving a core group of chronic re-offenders, homeless or otherwise.

This leads to a drain on resources - for police, the jail, the hospitals, and other community resources. This also prevents proactive policing against gang related crimes, the narcotics trade, and other violent crimes as resources are instead used to deal with individuals who chronically re-offend.

In our discussions regarding needle exchange, opinion, rather than fact again drove the conversations. Needle exchange is an effective public health program for reducing the transmission of blood borne disease, such as Hepatitis C and HIV, which affects the entire community. The public safety issue is discarded needles in the community. Needle exchange is a program that has been in operation in Santa Cruz since the late 80's. I raised my son in Santa Cruz, and he participated in little leagues and junior leagues when he was growing up. I did not see a discarded needle on the beach or in the community until approximately 7 years ago. My daughter, who is five, has already seen at least 3 needles that were discarded in our front yard. In the early and mid 90's heroin seemed to be the drug of choice amongst injection drug users. Currently, the trend over the last 10 years has been an increase in methamphetamine abuse, which may account for the increased needles discarded in the community. Regardless of the reasons, I believe that discarded needles in the community is an important issue. Practical methods for decreasing discarded needles in neighborhoods, parks, beaches, and open spaces should

be at the forefront of consideration by both the City Council and the Board of Supervisors.

In conclusion, I believe that we need to work collaboratively as a community, criminal justice system, judicial system, and social service and public health care providers to tackle the issues related to public safety. Personal perception and opinion are important, as is a feeling of safety. With this in mind, recommendations and resulting policies should be driven by facts, rather than fear. I think the public safety task force was an excellent start towards a larger conversation around safety in our community, and how we, as a community, can make Santa Cruz a safer place for all. I believe that we, as a community, have the ability, strength, and knowledge to come together to tackle the problems that our community is facing. ALL members of our community have the ability to be part of a collaborative effort to make Santa Cruz a safer place for all.

Missing from our recommendations and deliberations was a focus on success or hope.

There are many successful programs in Santa Cruz and elsewhere that can be looked at as models towards improving safety in our community. Additionally, there are many individual stories of success that we can draw on. Homelessness, mental illness, addiction, and crime affect the quality of life in a community for those experiencing these issues, as well as those impacted by them. The public safety issues that we are facing in our community are multi-faceted and complex, requiring rational, evidence based solutions. I am confident that as a community we can address and improve the issues affecting public safety in Santa Cruz.

Again, thank you for this opportunity to be a part of the solution.

Respectfully,

Danielle Long

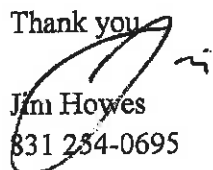
I have enjoyed working with the Public Safety Task Force identifying issues impacting public safety in Santa Cruz and feel it important to outline my concerns over a comment in the narrative portion of the Public Safety Task Force Report reviewed Wednesday evening, November 13th, 2013.

Early in our process we agreed to not use a person's status in our work and findings and instead focus on a person's behavior. In a recommendation on page #4 and line #148 in the document reviewed Wednesday evening, the task force approved a statement which contradicts this agreement. "Public nuisance/quality of life crimes and repeat offenders put a heavy strain on SCPD resources. Calls for service are at an all-time high and individuals that self-report as homeless account for a significant portion of the total number of arrests and citations. Repeat offenders, averaging 100 individuals per year, are responsible for a staggering number of total arrests. Over fifty percent of the repeat offenders arrested are in some manner related to drugs or alcohol"

I feel this statement contradicts our agreement to not use a person's status in our work and findings and voted for the comment "homeless account for a significant portion of the total number of arrests and citations" to be removed. My attempt to have this statement using a person's status removed was not successful.

I would like this letter with my comment's included in the appendix of our final document.

Thank you



Jim Howes

831 284-0695

jhowes106@gmail.com

Mailing Address:

7960 Soquel Drive #B197

Aptos, CA 95003

Dear Mayor Bryant and City Council members,

I would like to offer a few reflections on my service on the City Public Safety Task Force. First, I want to say that it was a unique learning experience to serve my City in this way, along with my fellow Task Force members. Despite the diversity of our backgrounds and perspectives, I was very appreciative of the commitment, respect, and focused energy that characterized our proceedings. Thanks to those professionals and City residents who also contributed input.

We worked together across our differences to craft recommendations that could be agreed upon by a majority of Task Forces members. While I did not always agree with every recommendation that passed or every word in the reports prepared by staff, I understand that in a democratic process, not every point of view is included in the final product. I appreciate the invitation from our Chair Kris Reyes to submit individual comments.

What I believed at the beginning of this process, and what I still believe six months later, is that there are no easy answers to the challenging issues facing our community. I know that our community is not alone in wrestling with these problems and in seeking solutions to them; many communities near and far are dealing with similar challenges. I firmly believe that there is no one entity, individual, or institution that is the cause of these issues or holds the responsibility alone. I don't believe the problems we are facing as a community are due to the failing of the courts, the criminal justice system, the schools, elected officials, or those providing health and human services to the most vulnerable in our community.

I come away from this experience with a large dose of reality, but also determined to retain my sense of hope. Every spring our agency has a graduation ceremony for those who have completed our drug and alcohol recovery programs. Listening to the stories of over 150 individuals who have been caught up in their addiction and the criminal justice system, and now are in recovery, going to Cabrillo, employed, reunified with their families, I am filled with hope for their lives and for our community. A strong message that we heard from so many in our proceedings is that more substance abuse treatment is needed. Clearly, addiction to drugs and/or alcohol is at the root of many of the issues we face and without effectively treating these diseases we will continue to face serious health and safety issues in our community.

These societal problems are complex, multi-layered, interconnected, and often entrenched in underlying root causes. Addiction, poverty, domestic violence, lack of housing, unemployment, gang violence are so much at the core of what determines a safe and healthy community. I kept coming back to our charter from the Council, as we moved through our proceedings—what can the City do to address these public safety concerns? The Council can ensure that we have a fully staffed police force, express its values through budgetary decisions, and pass municipal ordinances, for example. Ultimately, however, the City is not an island unto itself. I believe the key lies in collaboration—as so many of our recommendations indicate, we must work together with others to solve these problems.

We pride ourselves on collaboration in this County and there are many groups formal and ad hoc that join together to problem solve and collaborate, seek system improvements and innovations using research, data, and best practices. Of course there are constraints of resource limitations, legal ramifications, and jurisdictional boundaries, but we need to stay open and draw on the talent, creativity and goodwill we have in our community from those working in these areas, business owners, educators, youth, and all community members to make positive change happen. For me this is the only way forward.

The famous saying "it takes a village" is ever true—what can each of us do individually or collectively to make a difference—mentor a youth, pick up litter, volunteer in a school or nonprofit, report crime, help a neighbor in need, serve on an board or commission, donate, advocate, get involved! These recommendations from a cross-section of our community can be a starting place for further discussion, debate, study, and action planning. I am hopeful that we will continue to work together to make our City the safe, positive, welcoming and healthy community we know it can be.

Respectfully,



Carolyn Coleman