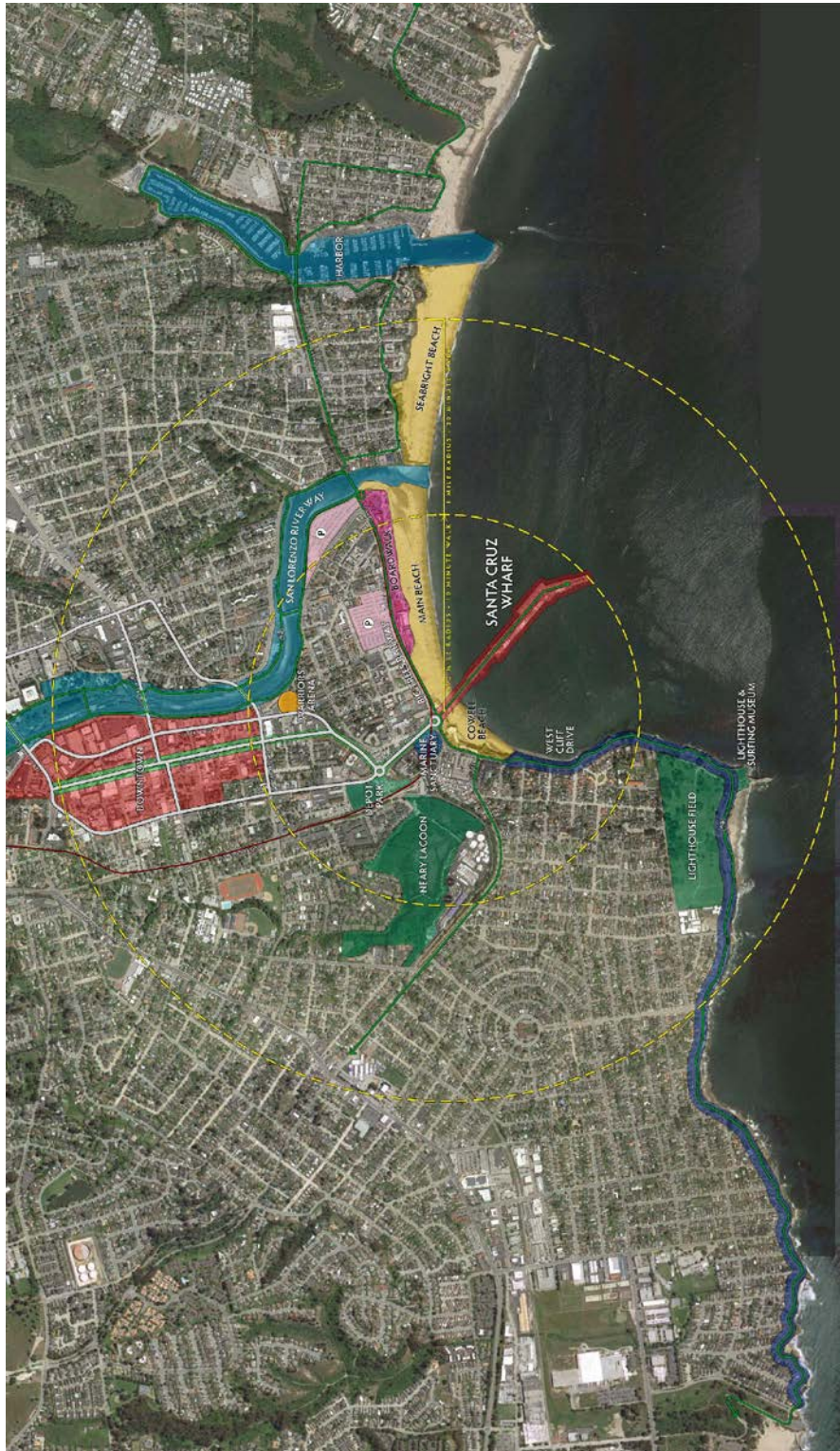


LIST OF FIGURES

- 1-1 Vicinity Location
- 1-2 Wharf Expansion Over Time
- 2-1 Proposed Master Plan Concept
- 2-2 Proposed Public Access and Recreational Improvements
- 2-3 Model of Proposed Wharf Development
- 2-4 Cross Sections
- 2-5A Concept Site Plan – Small Boat Landing
- 2-5B Concept Site Plan – South Landing
- 2-5C Concept Site Plan – Events Pavilion
- 2-5D Concept Site Plan – Relocated Entrance
- 2-6 Proposed Wharf Entrance Relocation
- 3-1A Entry Relocation Site Plan
- 3-1B Entry Gate/Sign Structure Cross Section
- 3-1C Entry Gate/Sign Structure Elevation
- 3-2A East Promenade Conceptual Site Plan
- 3-2B East Promenade Representative Site Plan & Cross Section
- 4-1 Photo of Wharf From West Cliff and East Cliff Drives
- 4-2 View of New Wharf Entrance Location
- 5 Rendering of Landmark Building and Overlook
- 6 Historical Photos of Wharf
- 7 Summary of Wharf Entrance/Exit Trips
- 8 Wharf Lighting With Expansion

FIGURE 1-1: Vicinity Location



SOURCE: Wharf Master Plan

FIGURE 1-2: Wharf Expansion Over Time

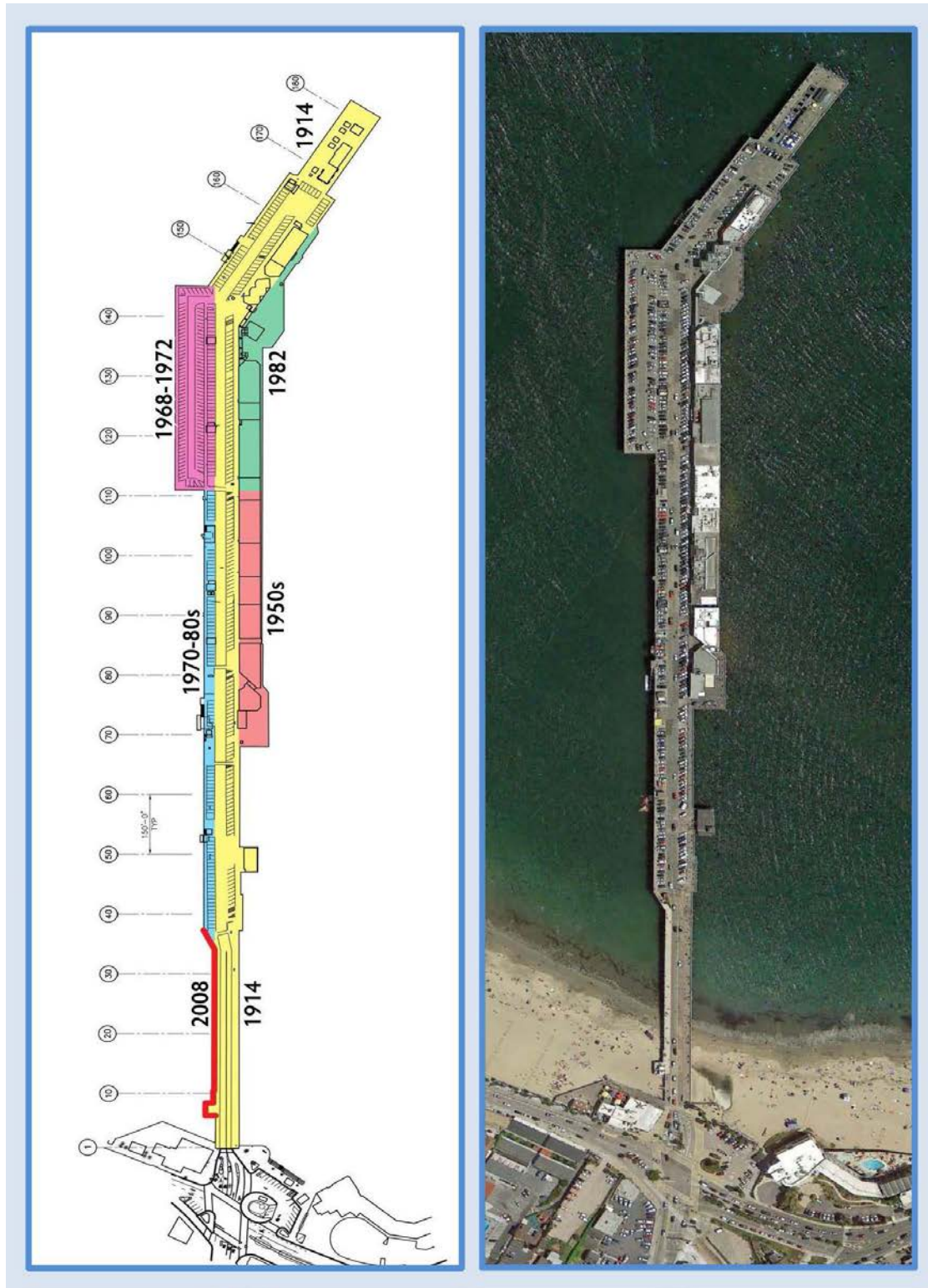


FIGURE 2-1: Proposed Wharf Master Plan Concept

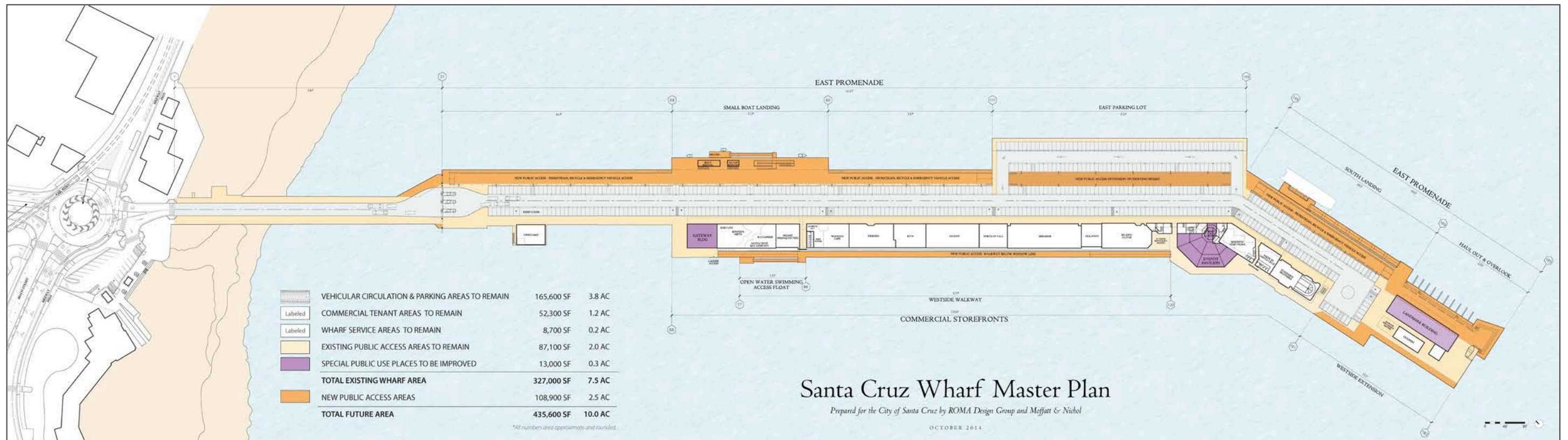


FIGURE 2-2: Proposed Public Access

& Recreational Improvements



PREPARED BY CITY OF SANTA CRUZ FOR GENERAL VISUAL REPRESENTATION OF WHARF EXPANSION.

FIGURE 2-3: Model of Proposed Wharf Development

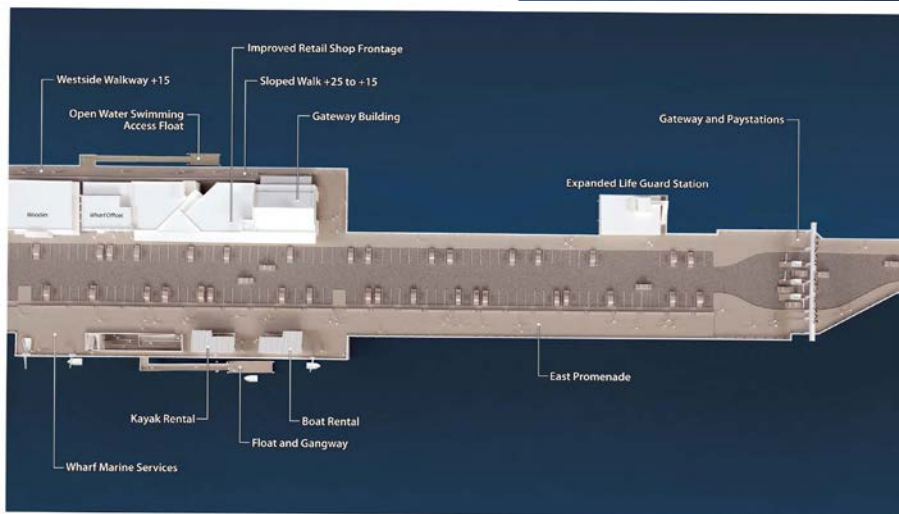
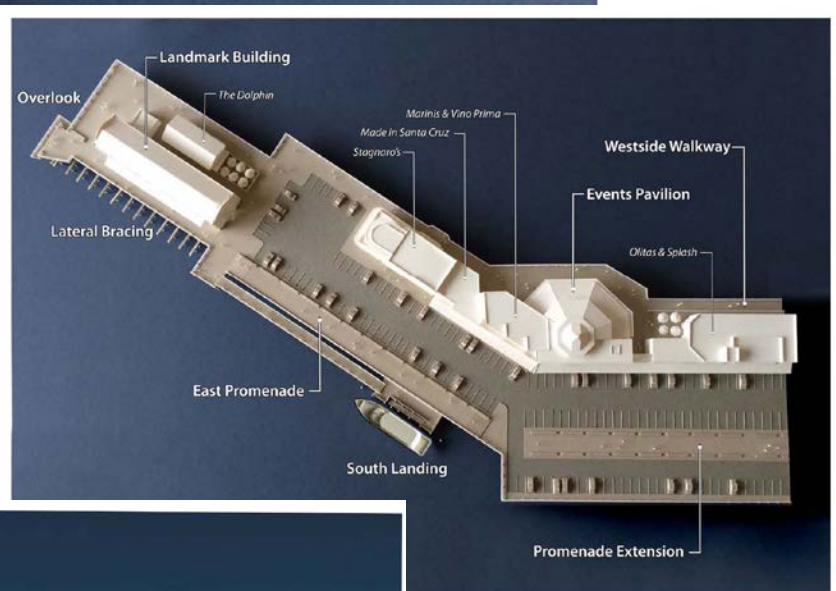
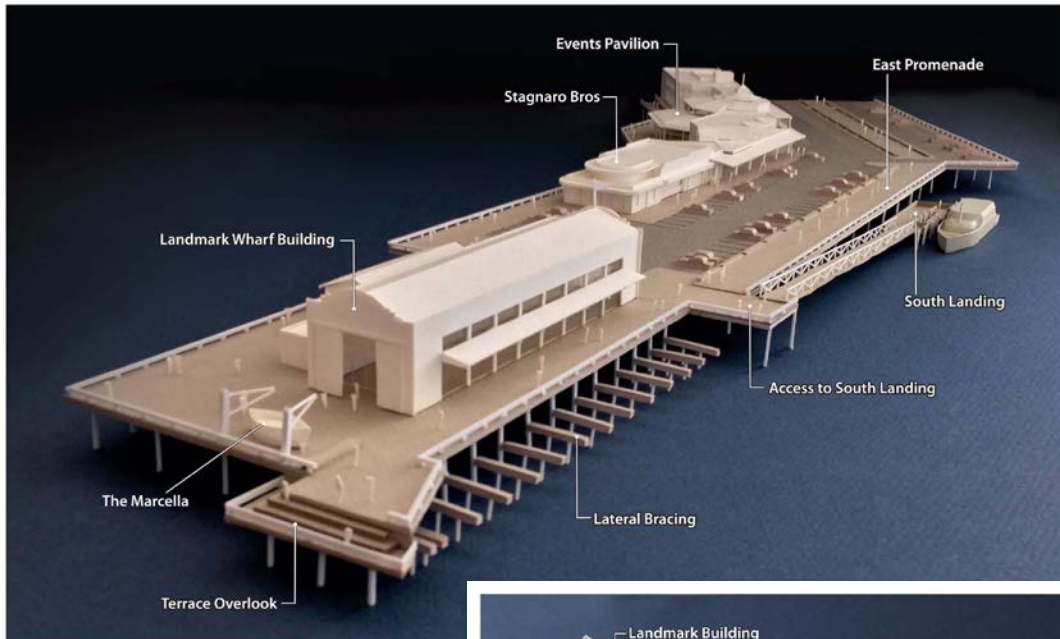
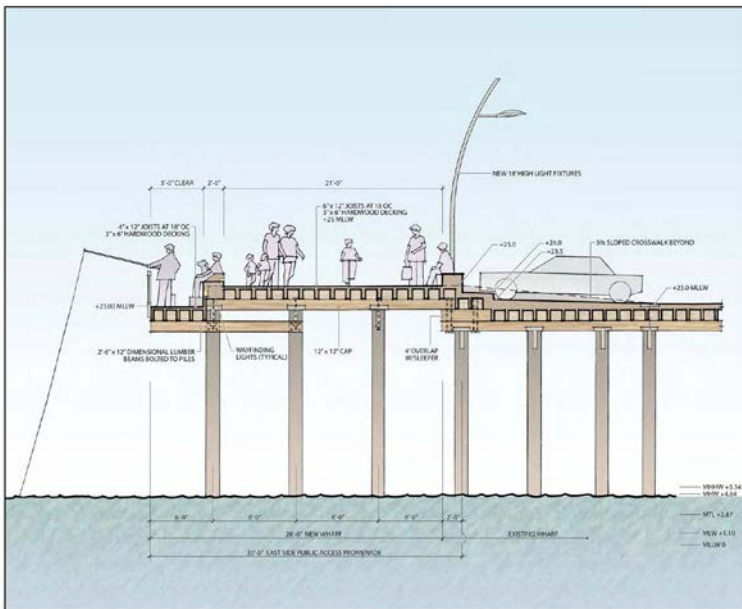
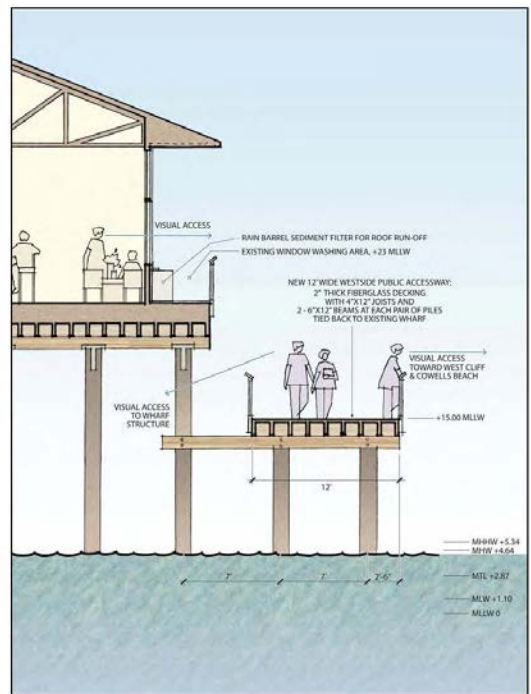


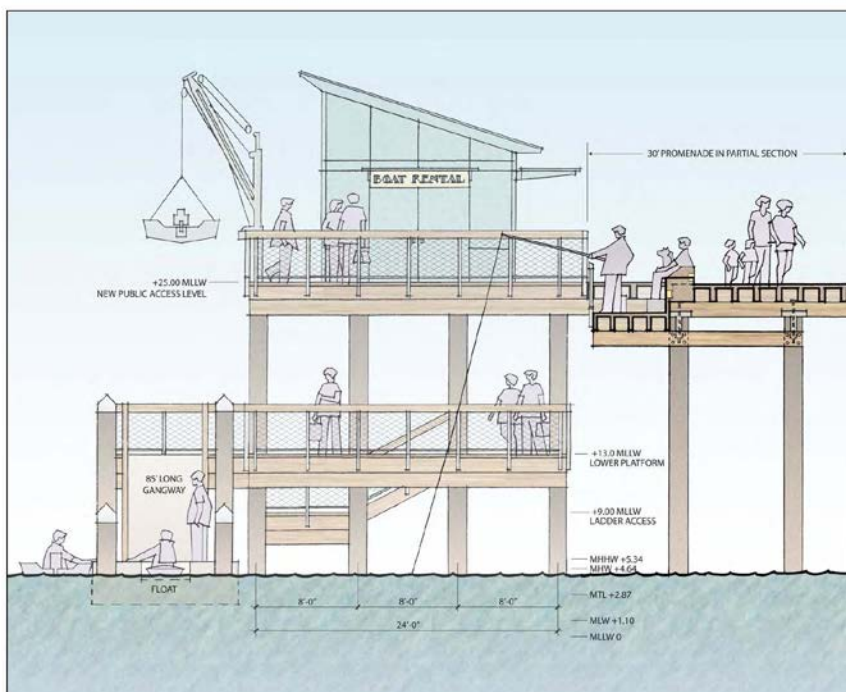
FIGURE 2-4: Cross Sections



East Promenade

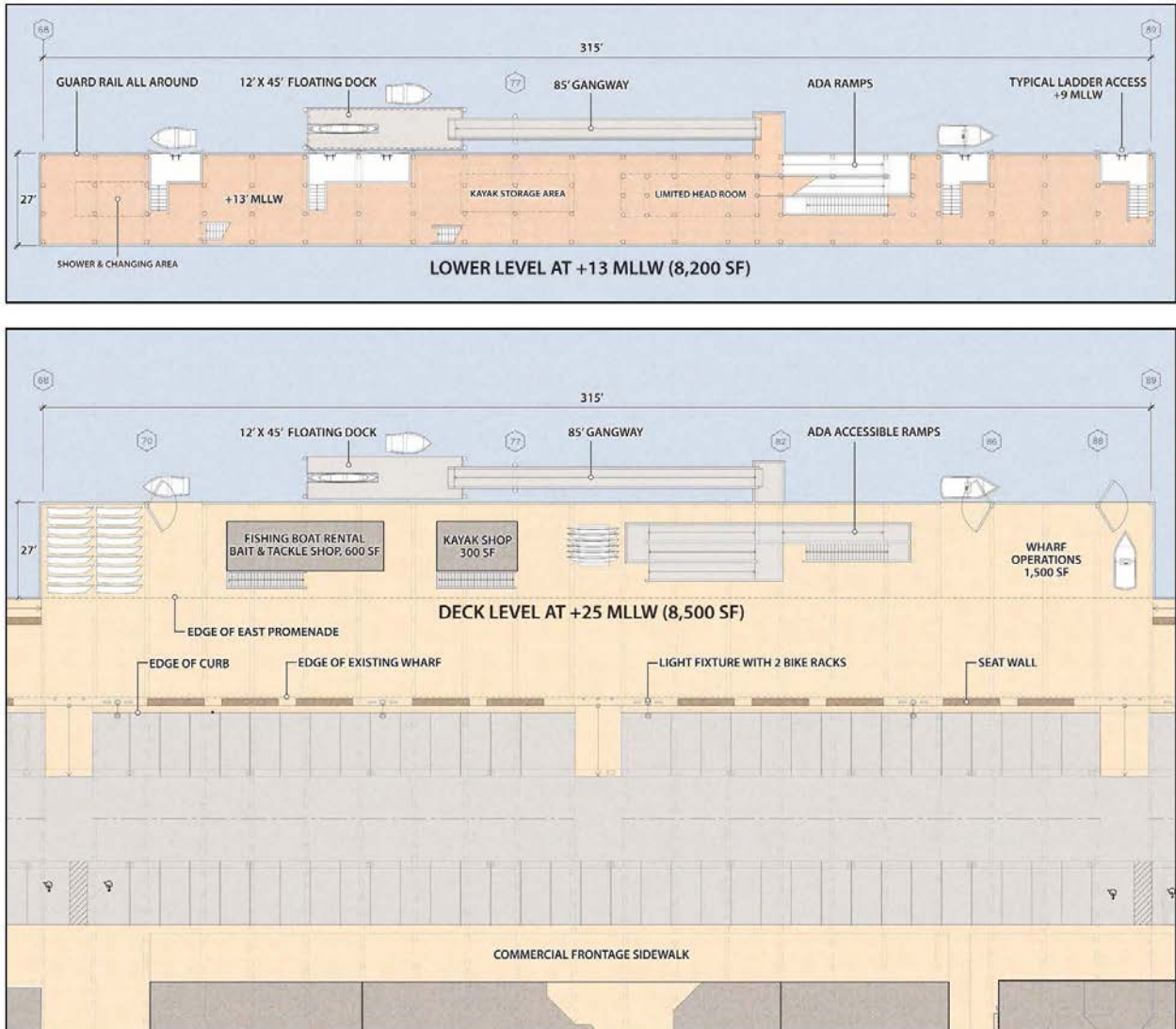


West Walkway



North Elevation of Small Boat Landing Adjacent to East

FIGURE 2-5A: Concept Site Plan- Small Boat Landing



Plan of the deck and platform levels of the Small Boat Landing

FIGURE 2-5B: Concept Site Plan- South Landing

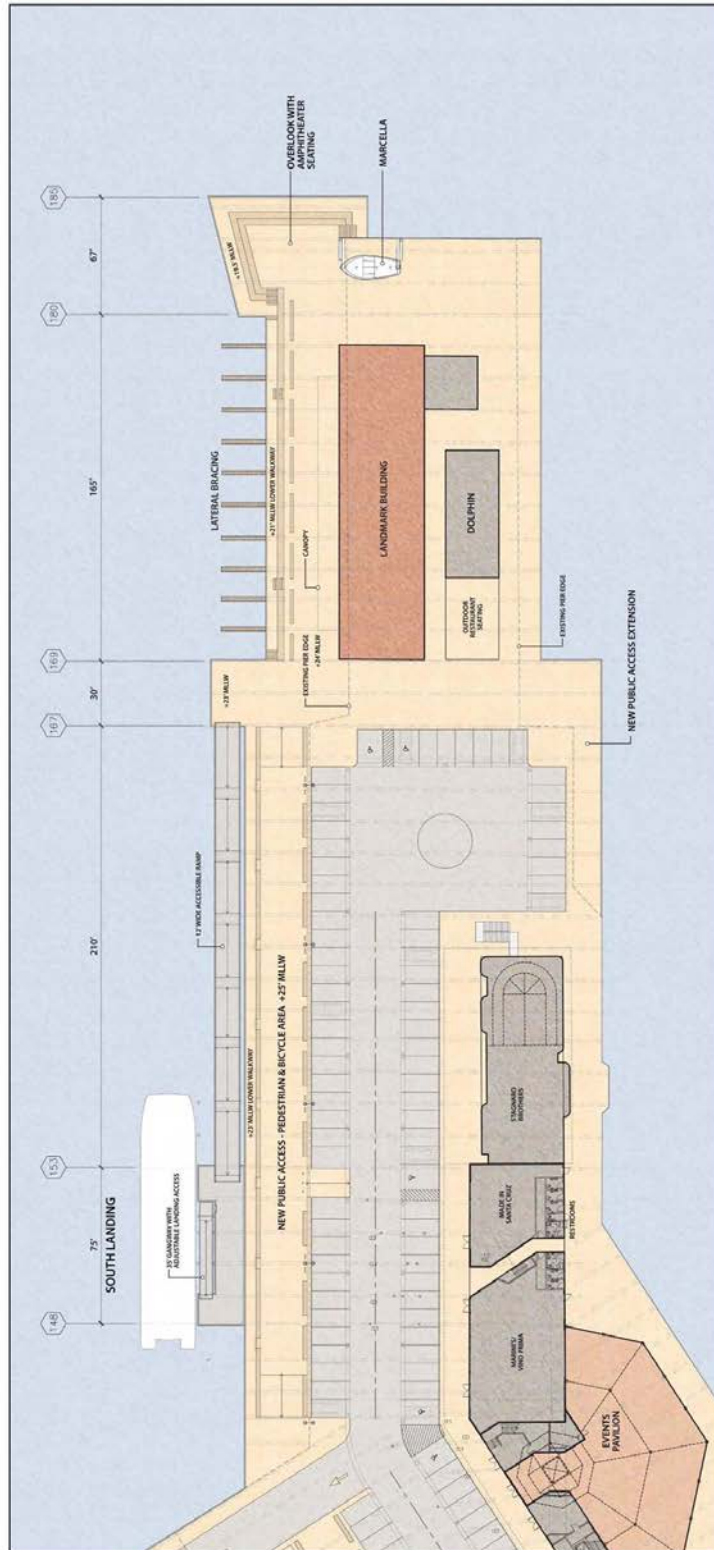
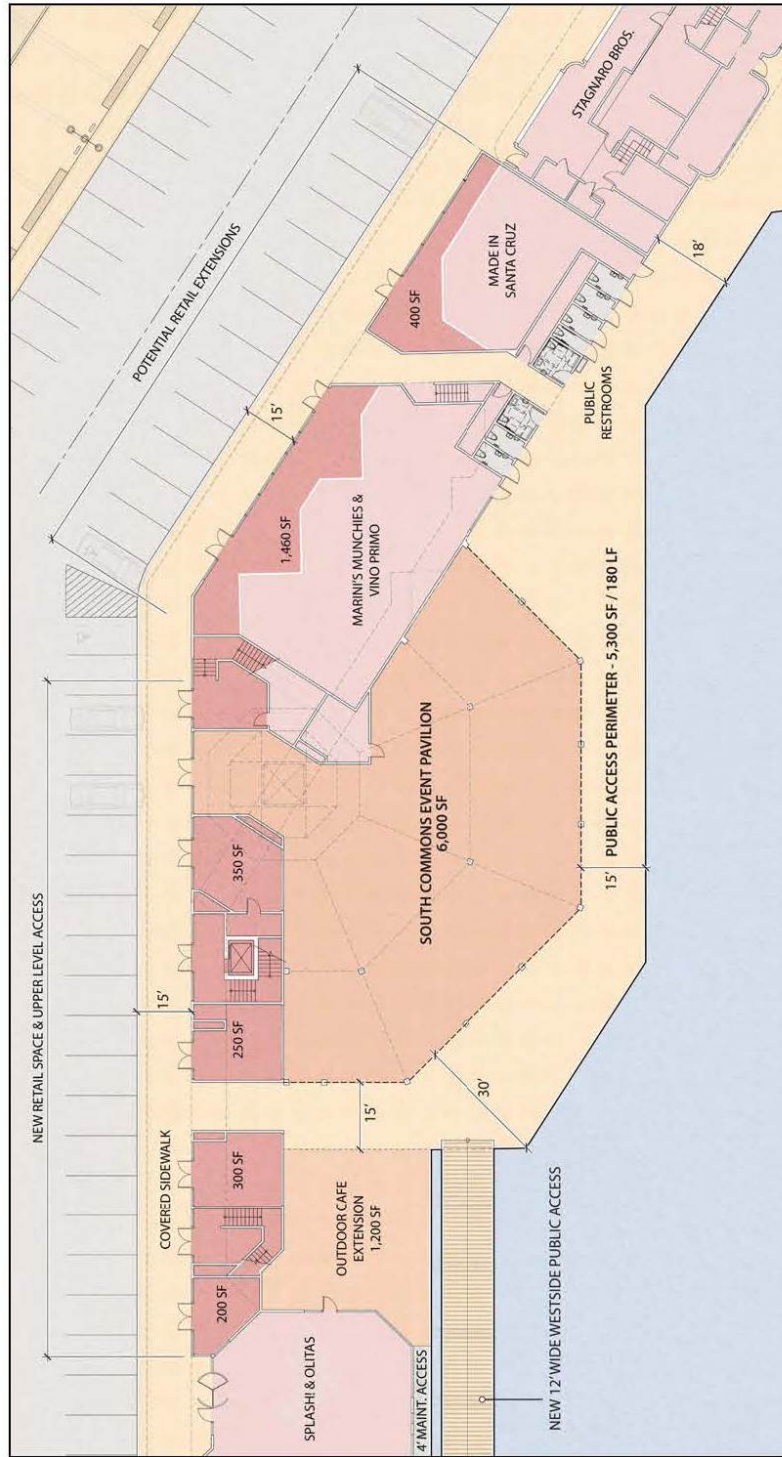
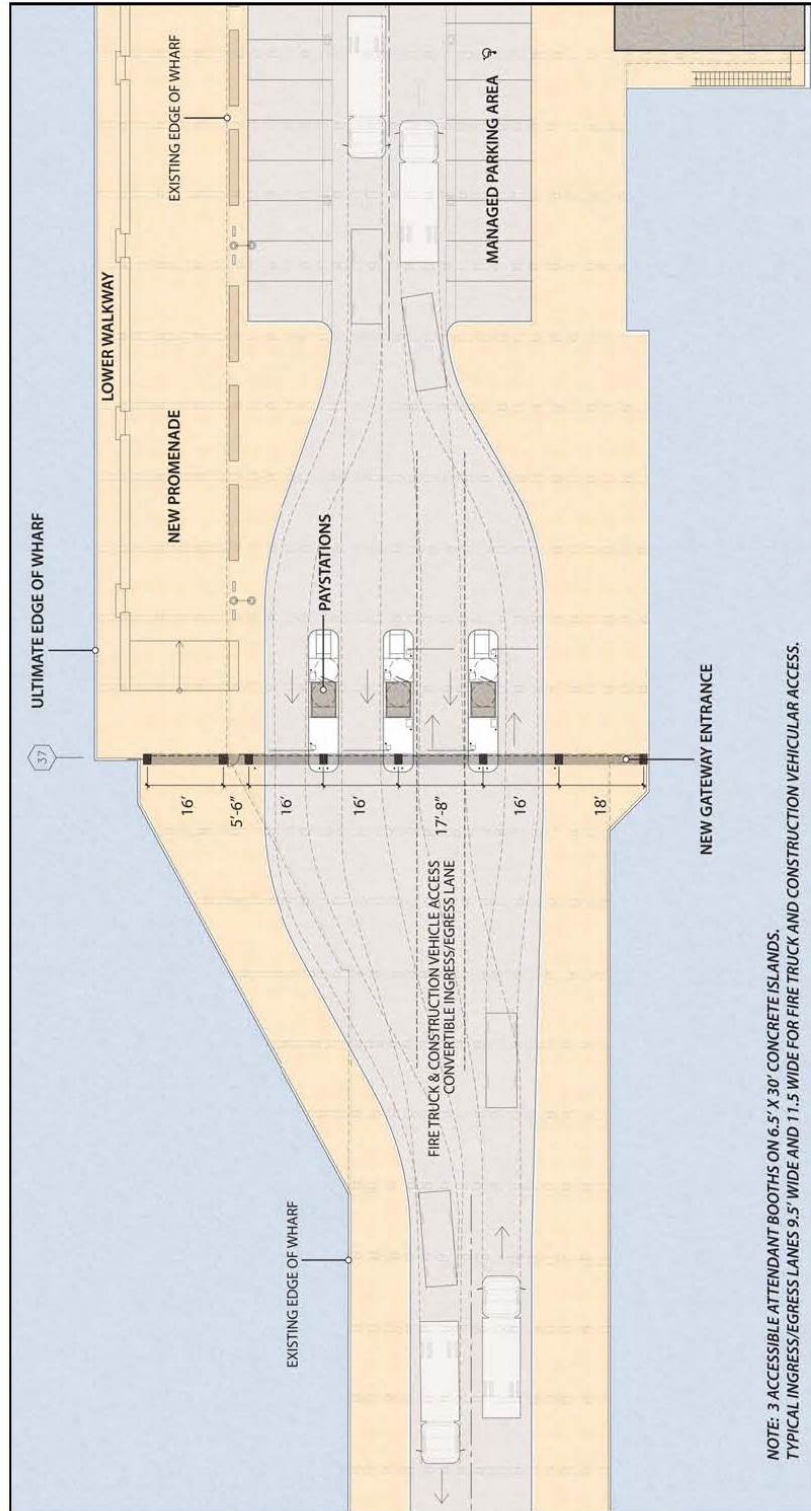


FIGURE 2-5C: Concept Site Plan – Events Pavilion



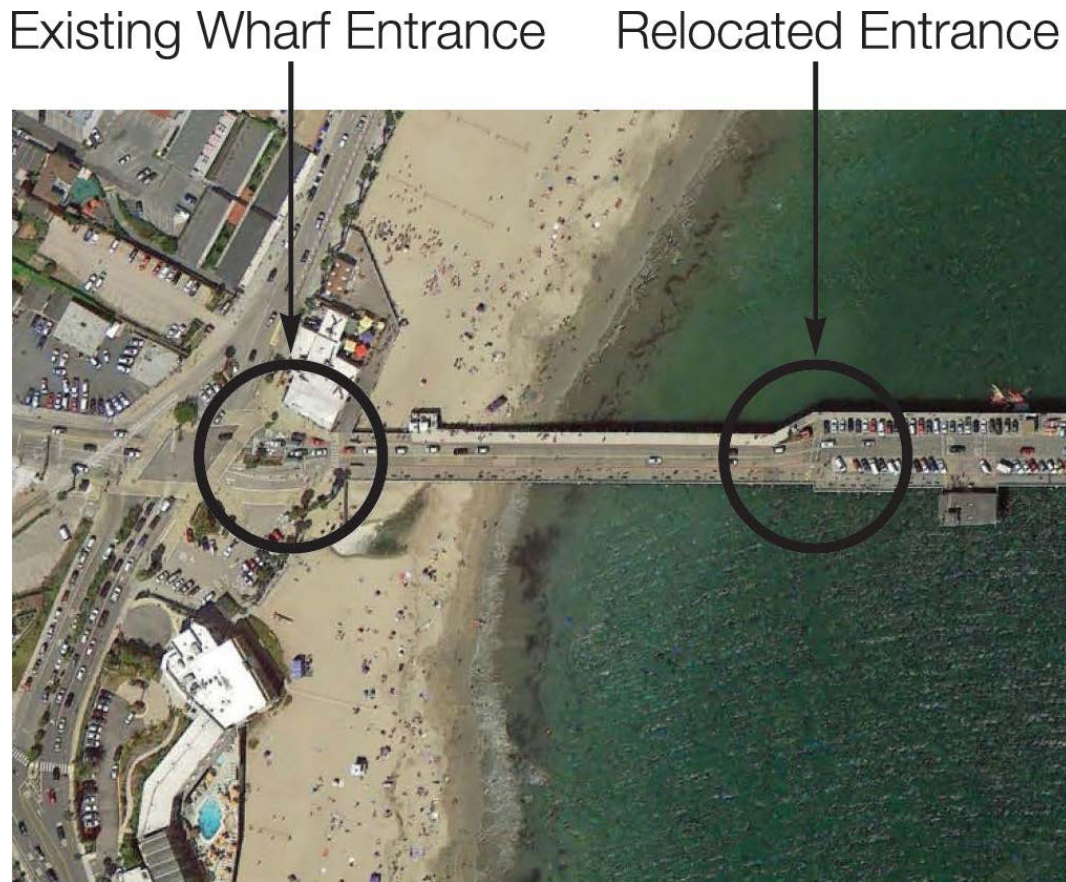
The plan for the Events Pavilion includes the addition of small commercial tenant spaces and the extension of the existing commercial buildings.

FIGURE 2-5D: Concept Site Plan - Relocated Entrance



The pay stations provide four lanes in and out of the Wharf – two in/out on most days and one in and three out when needed.

FIGURE 2-6: Proposed Wharf Entrance Relocation



The Master Plan provides a general example of signage, but a specific design, size, shape, and color will be developed and provided for public review before a final design is selected.

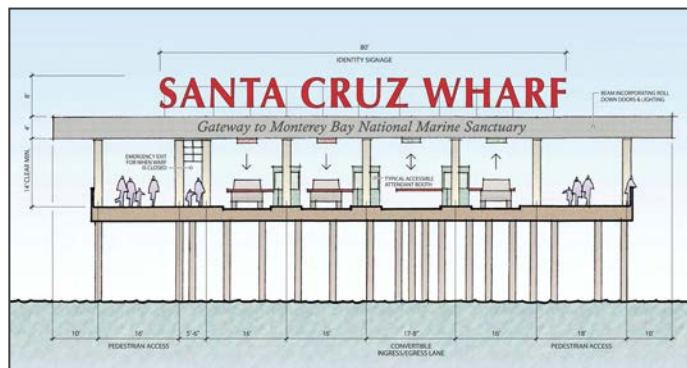


FIGURE 3-1A: Entry Relocation Site Plan

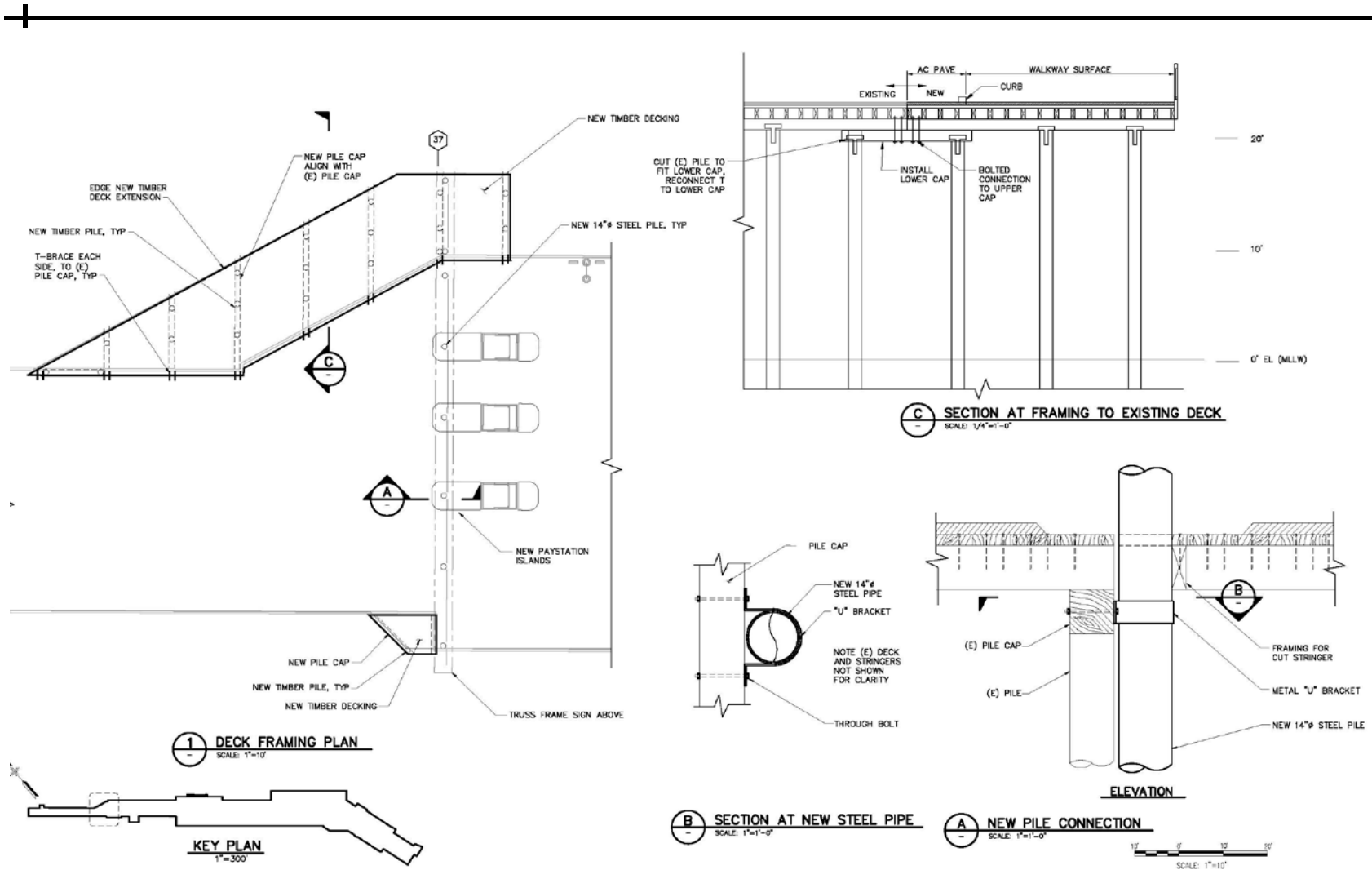


FIGURE 3-1B: Entry Gate/Sign Structure Cross Section

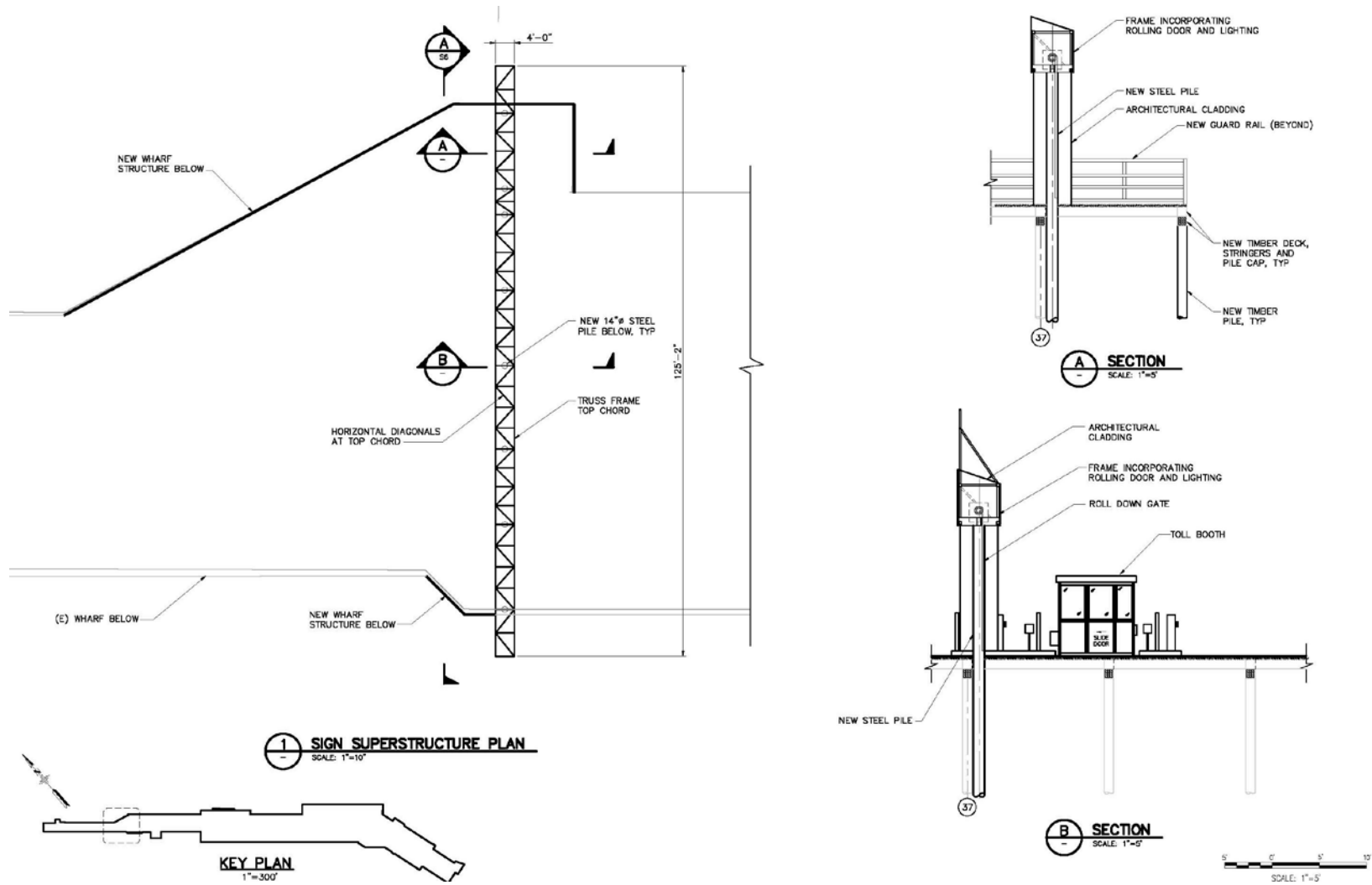
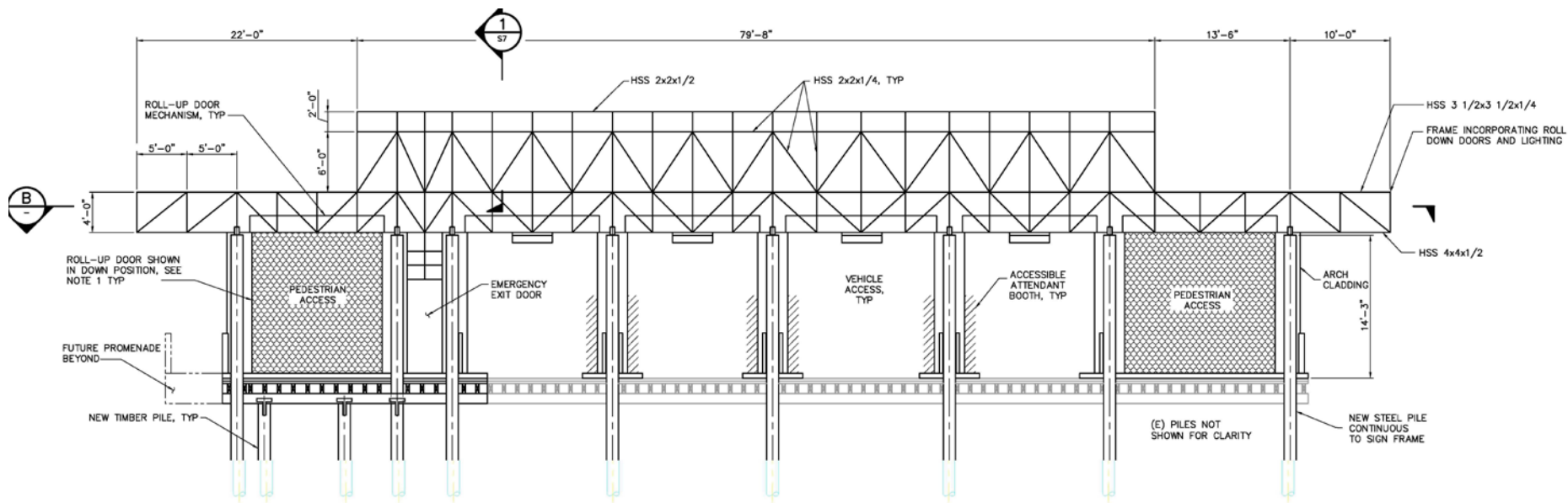


FIGURE 3-1C: Entry Gate/Sign Structure Elevation



NOTES:

1. ROLL UP DOOR MATERIAL (PEDESTRIAN AND VEHICLE) SHALL BE CONSTRUCTED OF 316L STAINLESS STEEL.

ELEVATION
SCALE: 1"=5'-0"

FIGURE 3-2A: East Promenade Conceptual Site Plan

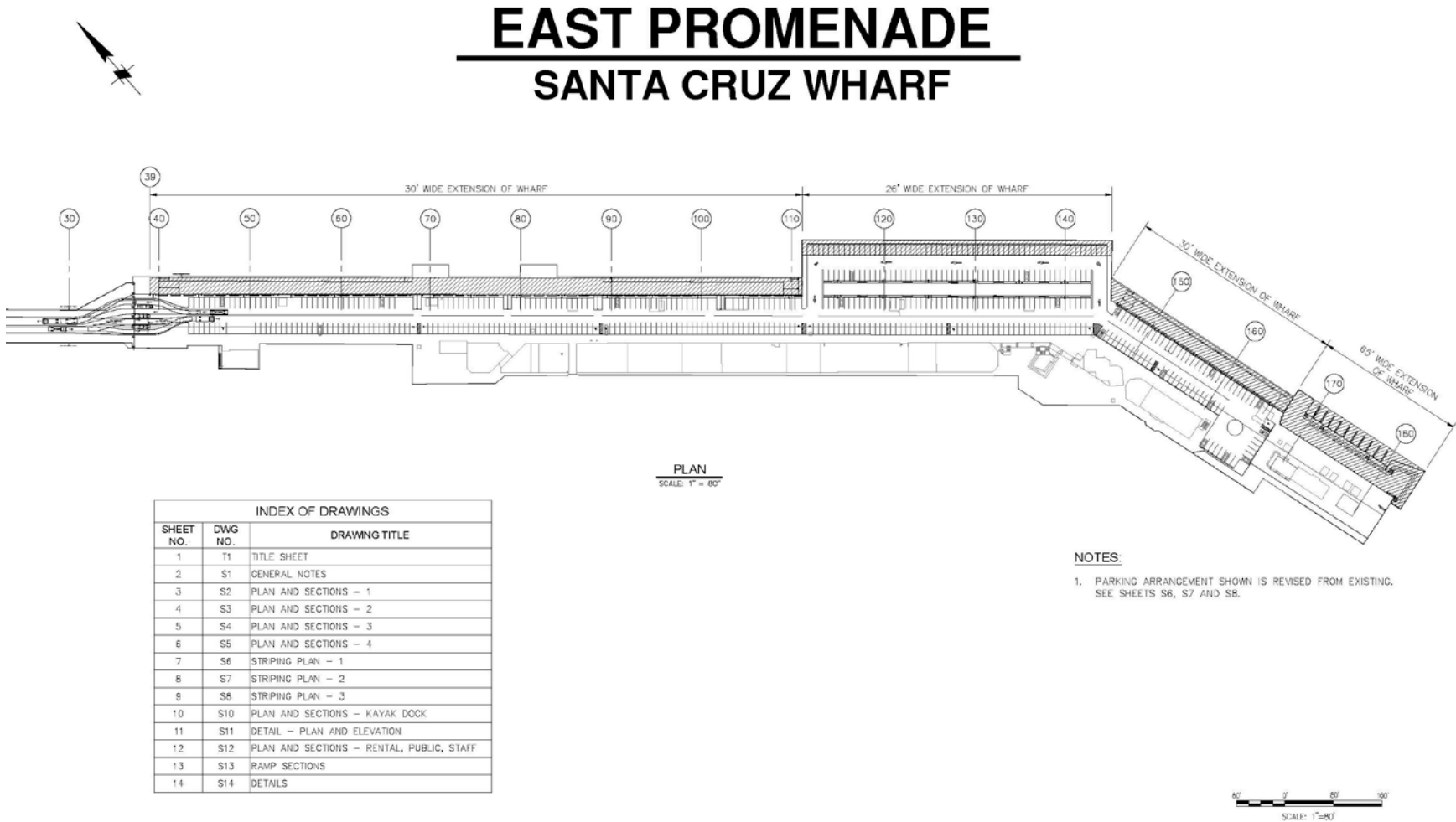


FIGURE 3-2B: East Promenade Representative Site Plan & Cross Section

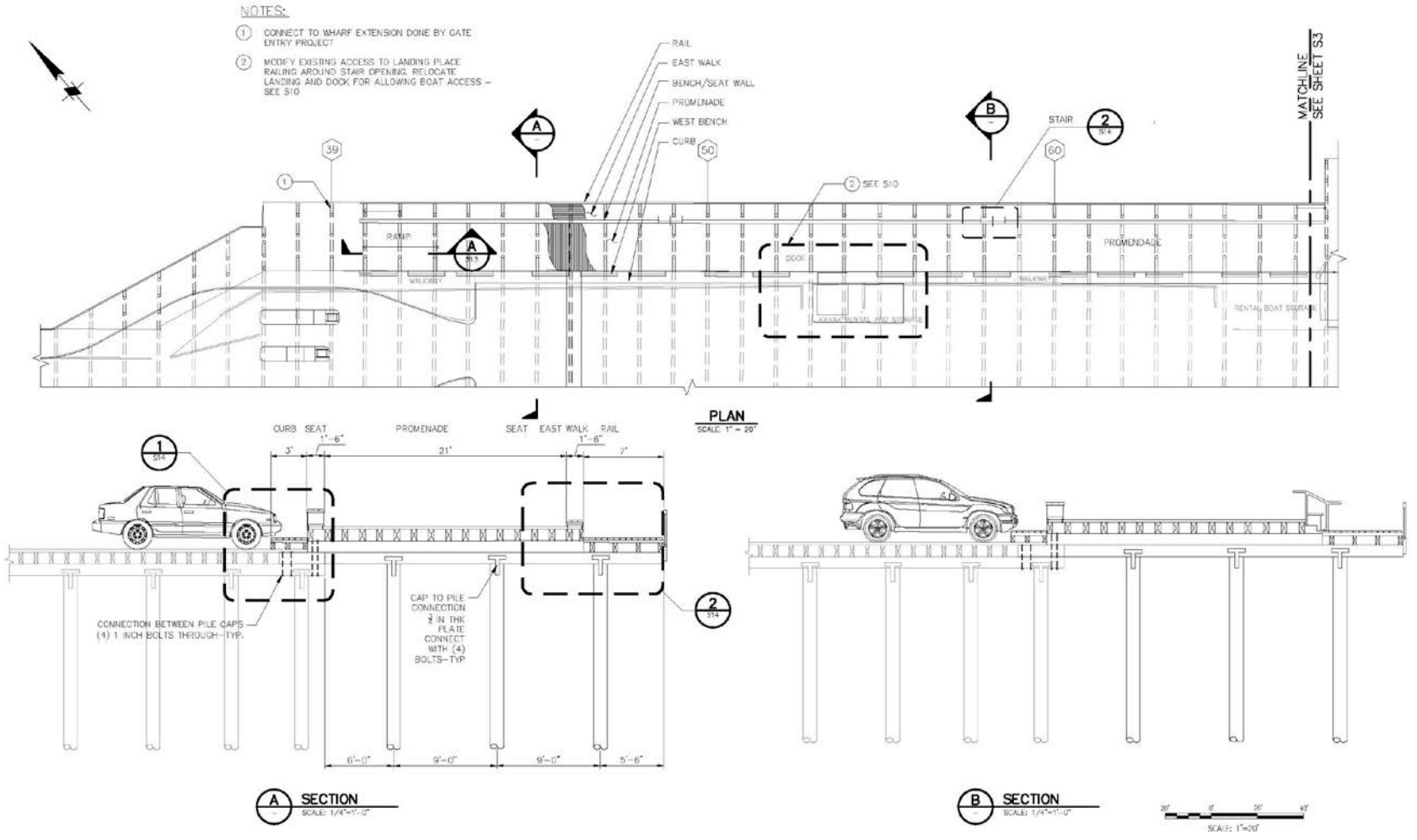


FIGURE 4-1 Photo of Wharf From West Cliff & East Cliff Drives



Looking East From West Cliff Drive



Looking West from San Lorenzo Point

FIGURE 4-2: View of New Wharf Entrance Location

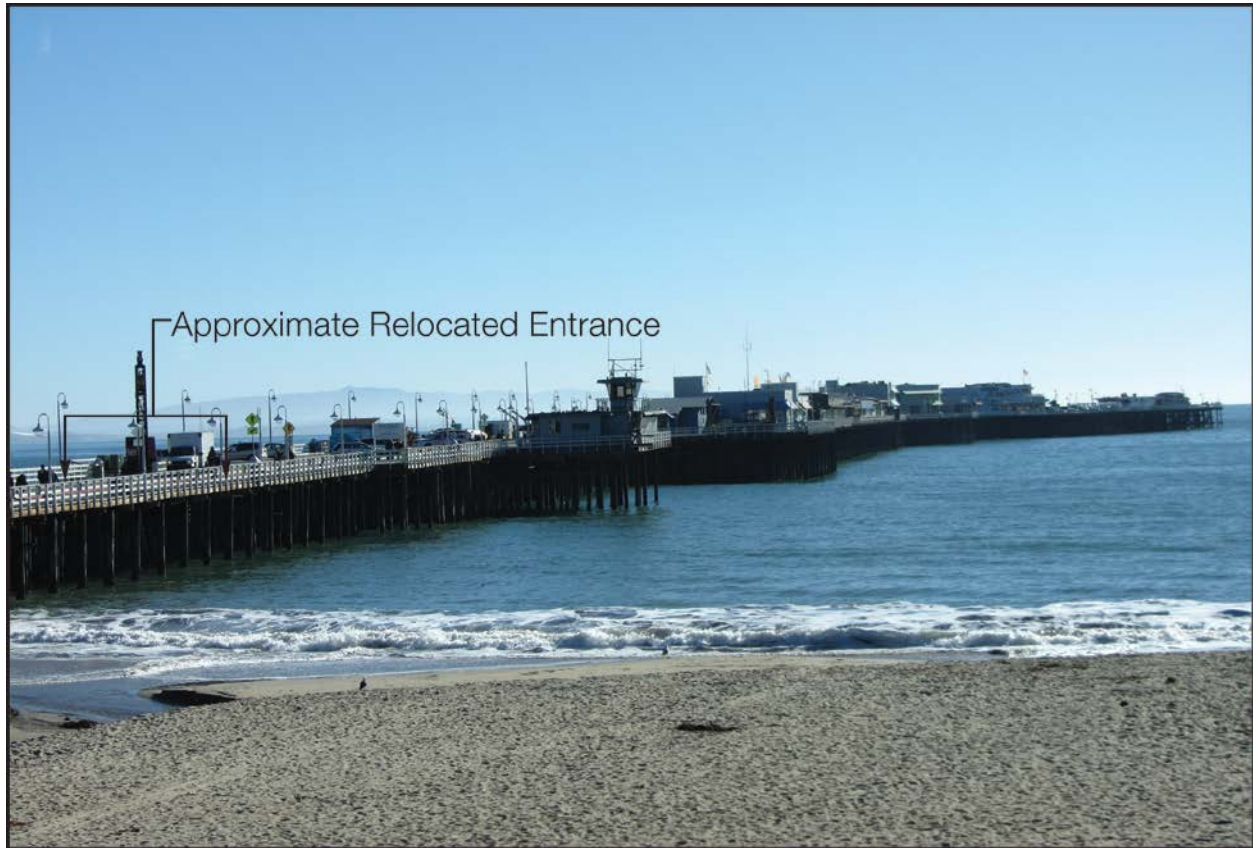


FIGURE 5: Rendering of Landmark Building and Overlook

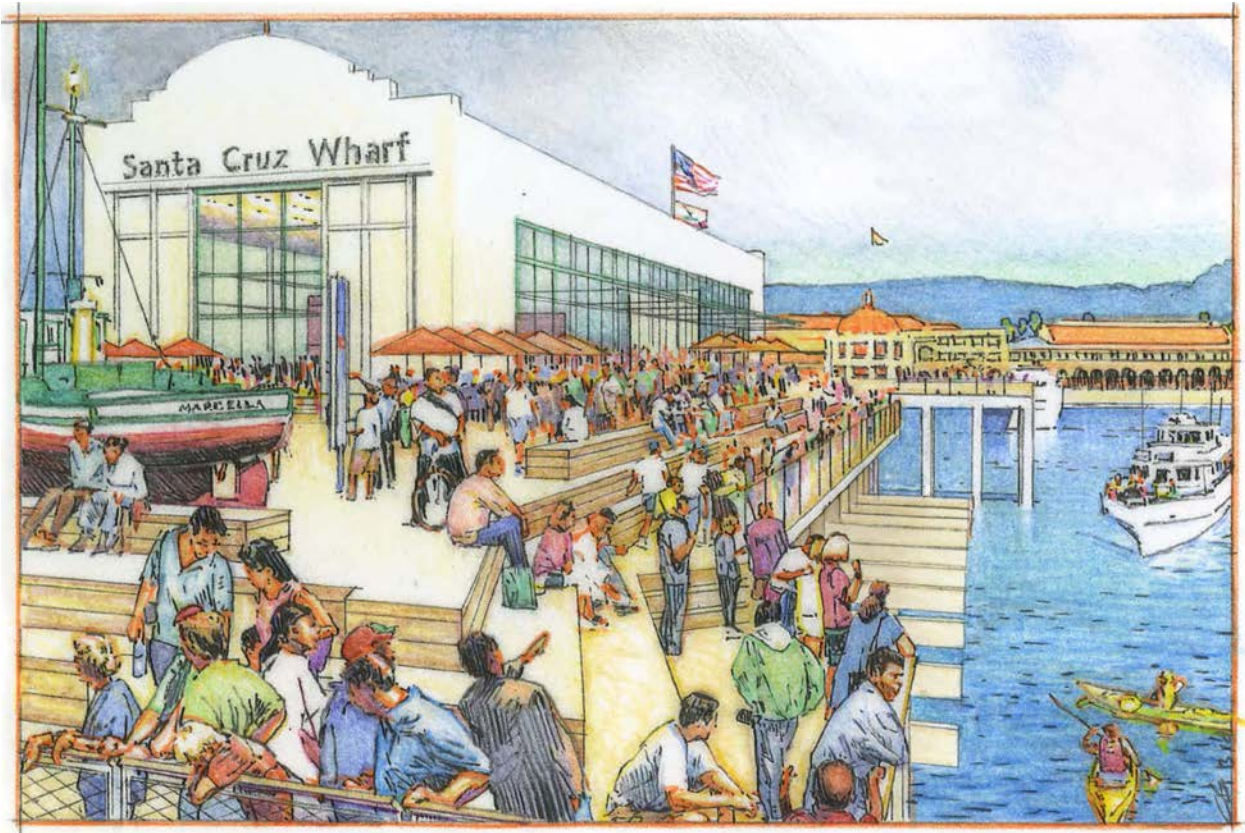
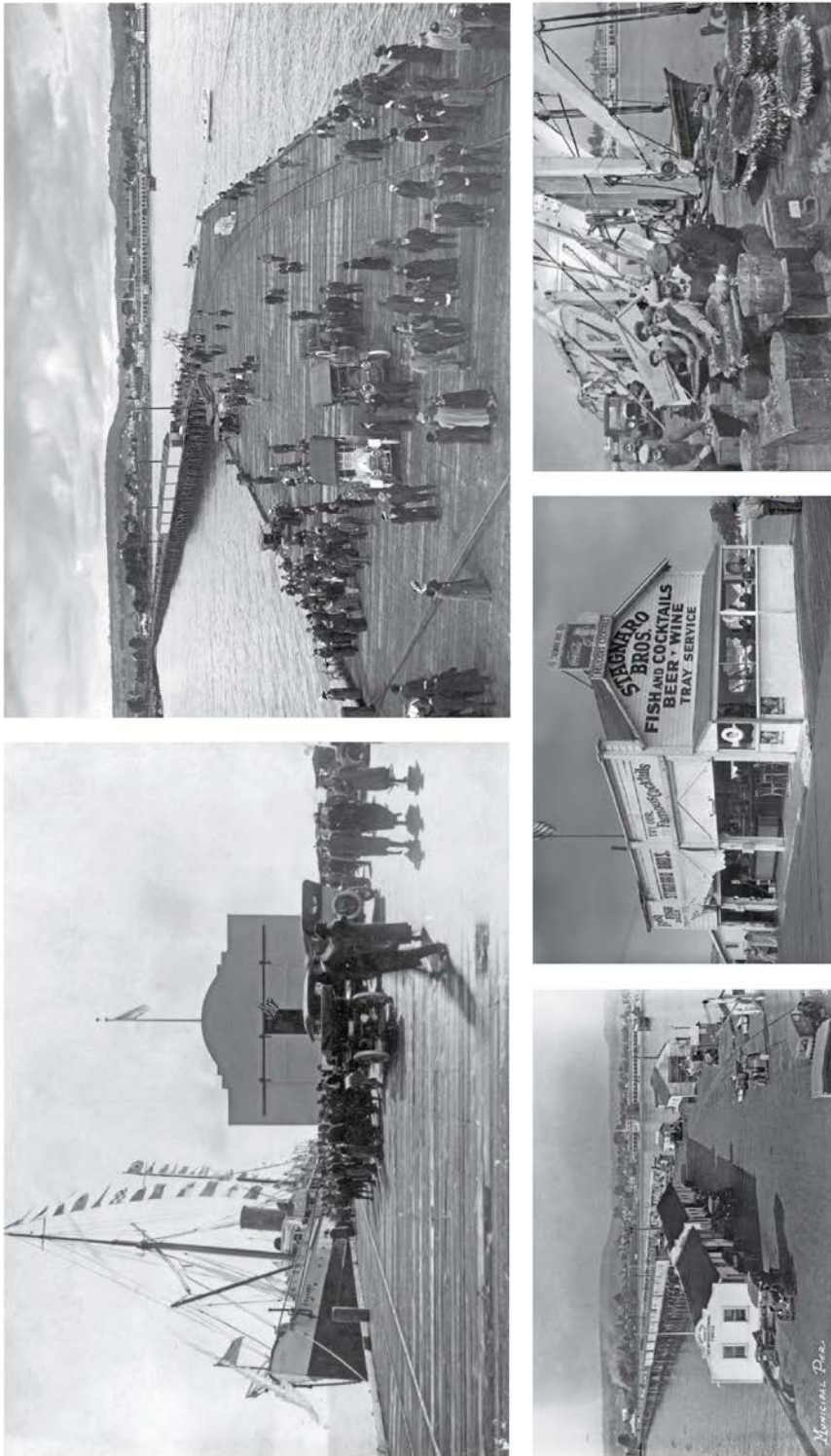
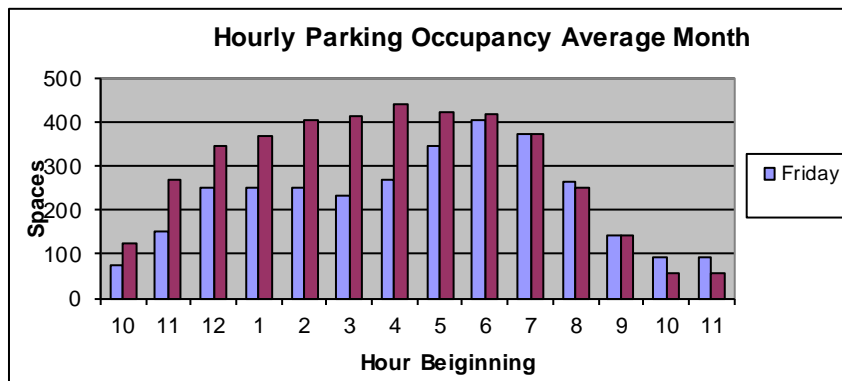
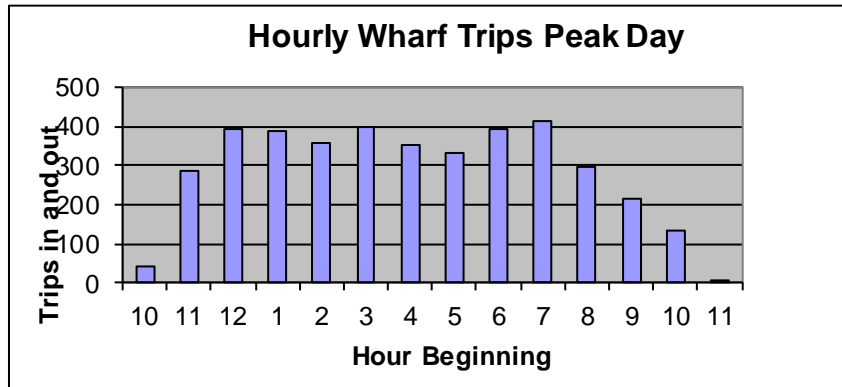
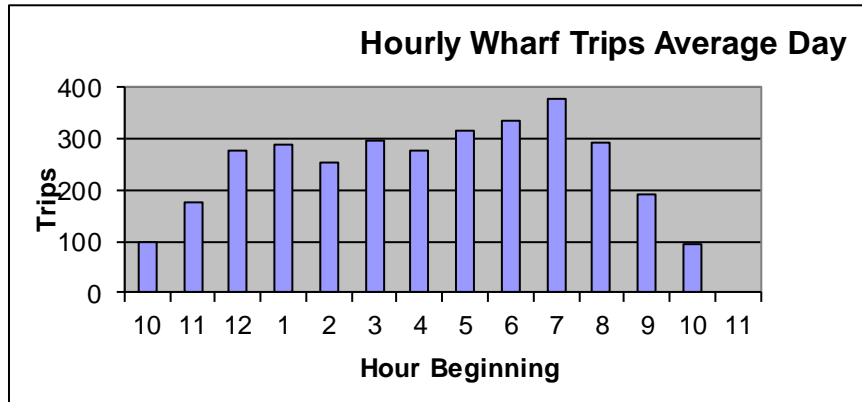
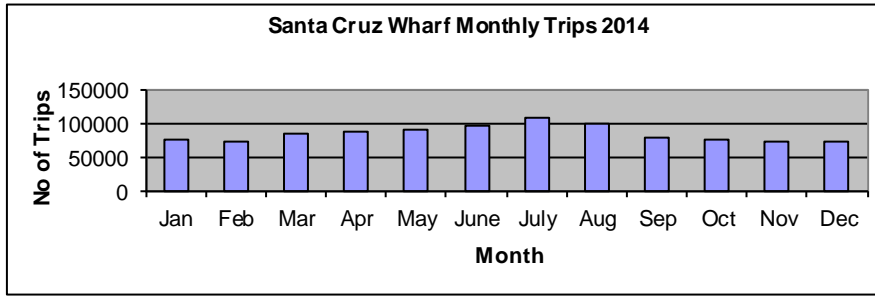


FIGURE 6: Historical Photos of Wharf



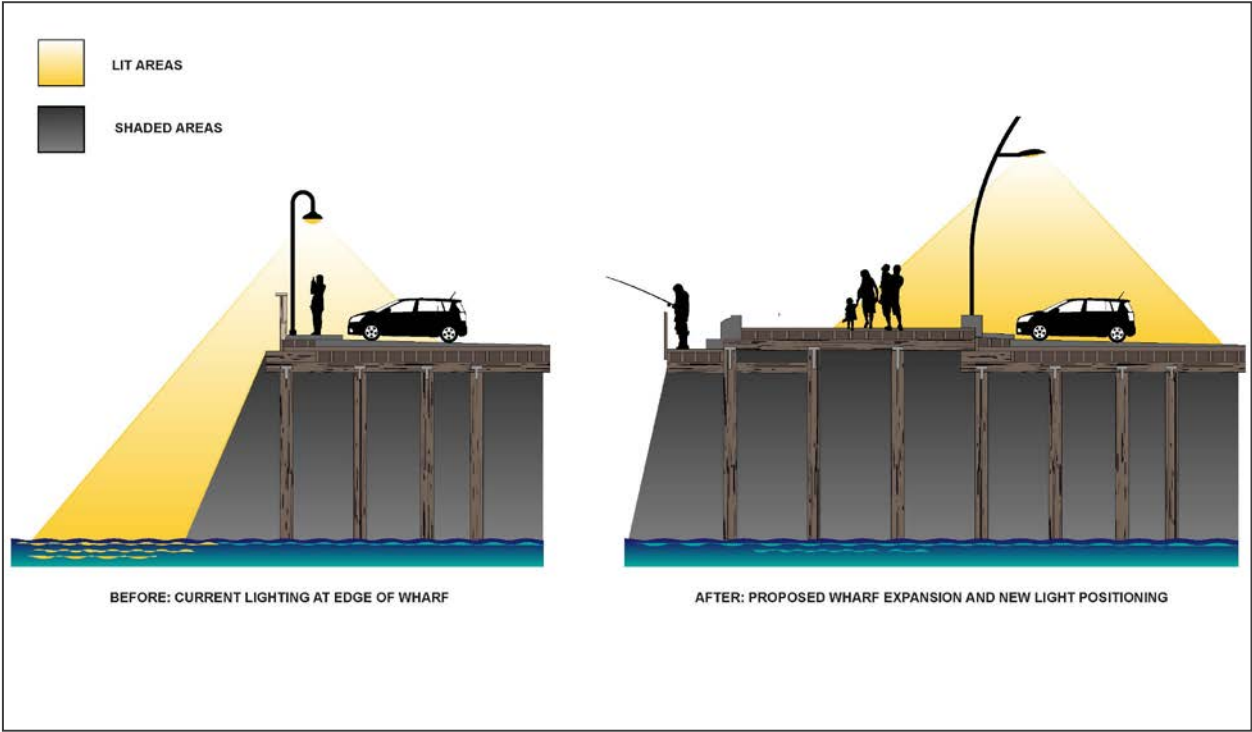
SOURCE: ROMA DESIGN GROUP

FIGURE 7: Summary of Wharf Entrance/Exit Trips



SOURCE: RON MARQUEZ

FIGURE 8: Wharf Lighting with Expansion



SOURCE: DUDEK