

State of California - The Resources Agency  
 DEPARTMENT OF PARKS AND RECREATION  
**PRIMARY RECORD**

Primary #  
 HRI #  
 Trinomial  
 NRHP Status Code

Other Listings  
 Review Code

Reviewer

Date

Page 1 of 5 \*Resource Name or # (Assigned by recorder): Huston & Wymouth Garage  
 P1. Other identifier: Jumping Monkey Cafe

\*P2. Location:  Not for Publication  Unrestricted

\*a. County Santa Cruz County

and (P2b and P2c or P2d. Attach a location map as necessary.)

\*b. USGS 7.5' Quad Santa Cruz Date Revised 1994 T .11 S.; R .2 W. ; Mount Diablo B.M.

c. Address: 418 Front St. City Santa Cruz Zip 95060

d. UTM:(give more than one for large and/or linear resources) Zone 10S ; 586894 mE/ 4092059 mN

e. Other Locational Data: (e.g., parcel #, directions to resource, elevation, etc., as appropriate)

east side of Front Street between Laurel Street and Soquel Avenue. APN# 005-151-39

\*P3a. Description: (Describe resource and its major elements, include design, material, condition, alterations, size, setting, and boundaries)

As the automobile became increasingly prevalent in urban centers during the inter-war period, commercial sales and services clusters began to appear. In Santa Cruz, this occurred primarily along Front Street. This 1925 building on Front Street was one of the first auto facilities to provide machine shop and repair service within this emerging district; it was designed by prominent local architect Lee Dill Esty.

(continued on page 4, DPR523L)

\*P3b. Resource Attributes: (List attributes and codes) HP6. 1-3 story commercial building

\*P4. Resources Present:  Building  Structure  Object  Site  District  Element of District  Other (Isolates, etc.)



P5b. Description of Photo:  
 (View, date, accession #)  
 View facing east, 2009.

\*P6. Date Constructed/Age and Source:

Historic  Prehistoric  Both

1925, city directories, 84 years old.

\*P7. Owner and Address:

\*P8. Recorded By: (Name, affiliation, and address)

F. Maggi/L. Dill/J. Kusz  
 Archives & Architecture, LLC  
 PO Box 1332  
 San Jose, CA 95109

\*P9. Date Recorded: 5/6/09

\*P10. Survey Type: (Describe)

Intensive

\*P11. Report Citation: (Cite survey report and other sources, or enter "none".)

Santa Cruz Historic Building Survey - Vol. III, Department of Planning and Community Development, City of Santa Cruz, 2009.

\*Attachments:

- None  Continuation Sheet  District Record  Rock Art Record  Other (List):  
 Location Map  Building, Structure, and Object Record  Linear Feature Record  Artifact Record  
 Sketch Map  Archaeological Record  Milling Station Record  Photograph Record

DPR 523A (1/95)

\* Required Information

State of California - The Resources Agency  
 DEPARTMENT OF PARKS AND RECREATION  
**BUILDING, STRUCTURE, AND OBJECT RECORD**

Primary #  
 HRI #

Page 2 of 5

\*NRHP/CRHR Status Code 3CS

Resource Name (Assigned by recorder) Huston & Wymouth Garage

B1. Historic Name: Huston & Wymouth Garage

B2. Common Name: 418 Front St. - Jumping Monkey

B3. Original Use: Commercial - auto

B4. Present Use: Mixed-use commercial

\*B5. Architectural Style: Mission Revival with Art Deco influences

\*B6. Construction History: (Construction date, alterations, and date of alterations)  
 Constructed 1925.

\*B7. Moved?  No  Yes  Unknown Date: n/a

Original Location: n/a

\*B8. Related Features:

None

B9a. Architect: Lee Dill Esty

b. Builder: Unknown

\*B10. Significance: Theme Commercial Development

Area: Downtown

Period of Significance: 1925 - 1955

Property Type: Commercial

Applicable Criteria: (3)

(Discuss importance in terms of historical or architectural context as defined by theme, period and geographic scope. Also address integrity.)

As the automobile became increasingly prevalent in urban centers during the Interwar period, commercial sales and services clusters began to appear with urban areas throughout the United States. In Santa Cruz, Front Street (originally named Main Street) initially had developed as the primary downtown thoroughfare, but by the late 1860s as a part of the Wright-Foreman survey and town incorporation, it became a secondary street to the newly named Pacific Avenue. The street subsequently evolved as the city's Chinatown; this period ended with a fire in 1894 that destroyed many of the early structures. Except for the construction of the county jail and Hall of Records in the late-nineteenth century, development of Front Street remained sporadic until after World War I, when new auto sales and service uses appeared.

(continued on page 4, DPR523L)

B11. Additional Resource Attributes: (list attributes and codes) None

\*B12. References:

- Chase, J., Sidewalk Companion to Santa Cruz Architecture, 2005.
- Lehman, S., Santa Cruz Context Statement, 2000.
- Sanborn Fire Insurance Maps, 1905-1950.
- Santa Cruz, Standard Map, 1929.
- Santa Cruz building permits.
- Santa Cruz city directories, 1924-1989.
- Santa Cruz Sentinel, Huston & Wymouth Garage, 4/22/1925.
- Santa Cruz (County of) Voters Registrations.

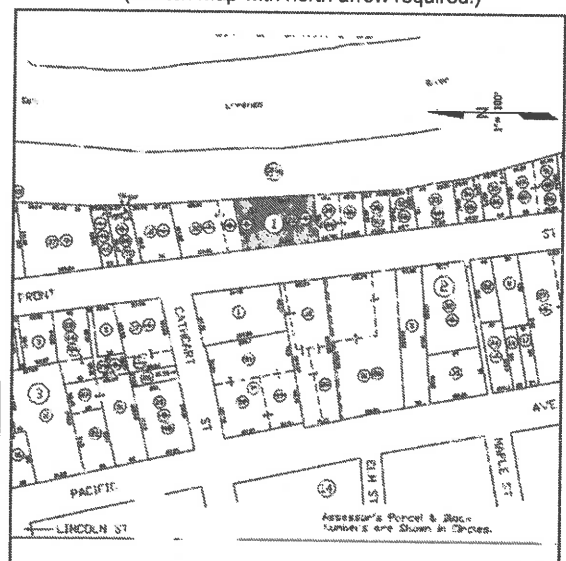
B13. Remarks: None

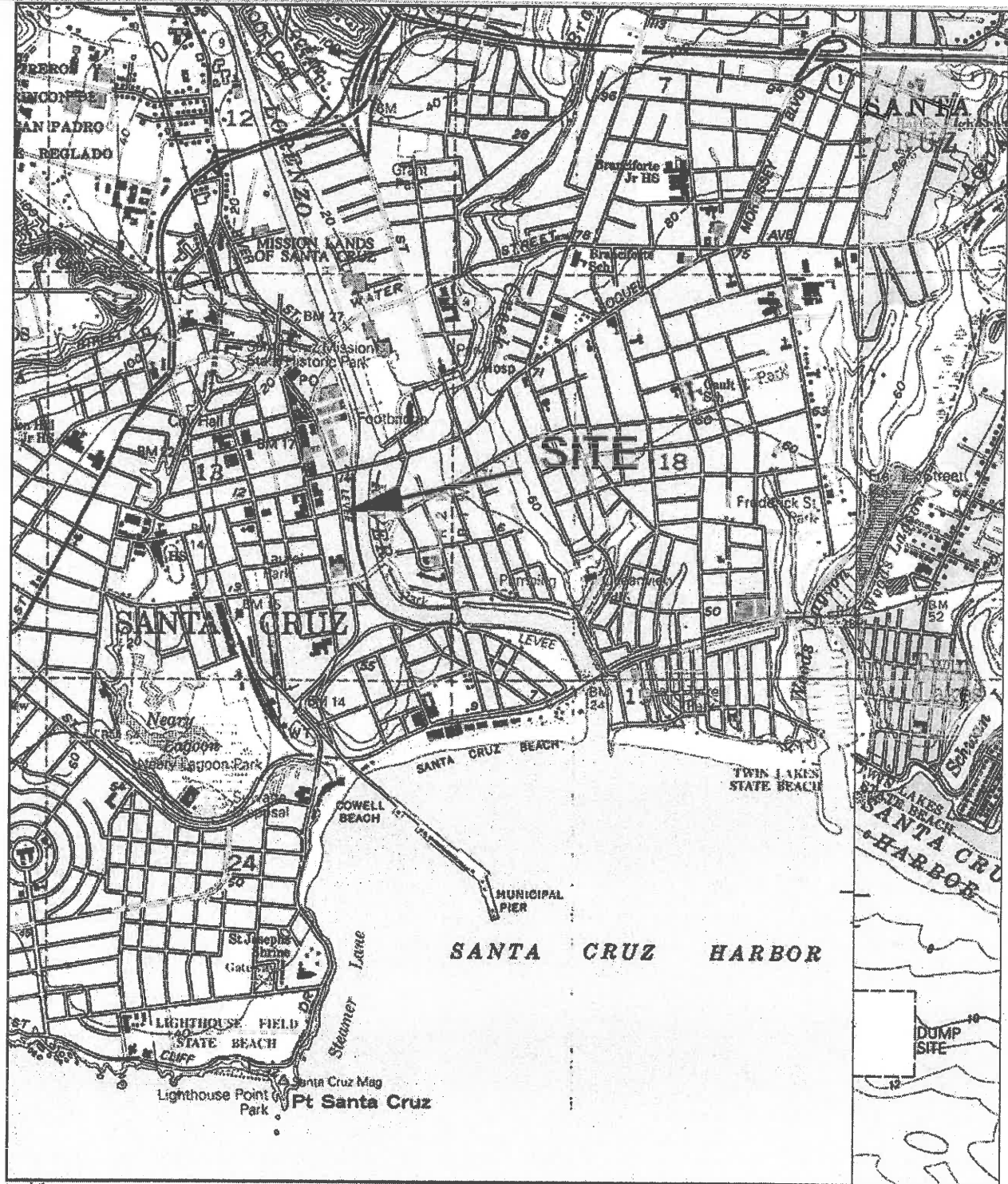
\*B14. Evaluator: Leslie Dill

\*Date of Evaluation: May 6, 2009

(This space reserved for official comments.)

(Sketch Map with north arrow required.)





TN 7/MN  
14%

Map created with TOPO!® ©2003 National Geographic (www.nationalgeographic.com/topo)

**CONTINUATION SHEET**

Page 4 of 5 \*Resource Name or # (Assigned by recorder) Huston & Wymouth Garage

\*Recorded By F. Maggi/L. Dill/J. Kusz \*Date 5/6/2009  Continuation  Update

*(Continued from page 1, DPR523a, P3a)*

After the First World War, the Eclectic Revival or Period Revival styles grew in prominence to become characteristic of both residential and non-residential construction. Such styles as Spanish Eclectic, Mission Revival, Mediterranean, and others became popular for more than a decade. Even very modest buildings such as this one-story Mission-Revival/Art Deco commercial structure include character-defining Eclectic Revival forms and detailing, including its stepped and shaped parapet wall, and its raised stucco ornament.

This one-story commercial building's rectangular footprint follows the sidewalk frontage and runs the full depth of the parcel. This building has a symmetrical Mission-Revival arched and stepped front parapet wall in front of its flat roof. The structure and exterior walls are formed concrete. The exposed north side wall has an exposed board-form pattern, and the front façade is faced with stucco. Simple, raised-stucco Art Deco ornament is applied at the front façade, including a stepped stucco coping that flanks the central segmental-arched parapet, a distinctive raised arrowhead motif at the top of the arch, symmetrically stucco lines, squares, and diamonds at the upper wall surface, and, above the storefront, a flat stucco cornice interrupted by four additional arrowhead elements. An awning and sign conceals much of the upper wall; there may be additional detailing. The replacement storefront details include a recessed entry centered between a pair of large display windows. The windows are compatible with the original building; they have transom windows above large fixed windows. They are made of recent materials and with modern muntin profiles. The windows have stucco bulkheads that are possibly original. The south-side wall abuts the neighboring building to the south at 412 Front Street.

*(Continued from page 2, DPR523b, B10)*

This 1925 building, previously addressed as 309 Front Street, was designed by prominent local architect Lee Dill Esty for Huston & Wymouth; it was one of the first auto facilities to provide machine shop and repair service in the city.

Huston & Wymouth remained at this site for about 30 years. By the early 1950s the business had changed to Taurus Manufacturing Company that continued the machine shop use. The machine-shop use ended in 1960 when the Prolo Chevrolet dealership moved their paint shop into the building in conjunction with use of the adjacent building to the south as an auto body shop.

The mid-1960s saw the beginning of a change in land use along Front Street as the city was undergoing a rapid outward expansion period. The building remained vacant for a number of years, but was converted to retail commercial uses and a dance studio in 1984. Those types of downtown commercial uses continue today; the building has been renovated and is presently occupied by the Jumping Monkey Cafe, a vegetarian restaurant specializing in natural Indian food.

*(Continued on next page)*

**CONTINUATION SHEET**

Page 5 of 5 \*Resource Name or # (Assigned by recorder) Huston & Wymouth Garage

\*Recorded By F. Maggi/L. Dill/J. Kusz

\*Date 5/6/2009

Continuation  Update

(Continued from previous page)

Lee Dill Esty, architect

The Mission Revival design by Lee Dill Esty is a distinctive example of his work. Lee Dill Esty was born in Maine in 1876 and came to Santa Cruz in 1879. The son of J. D. Esty, an early Santa Cruz County Supervisor, Lee Dill Esty was associated with the early Arts and Crafts movement and was an early employee of Julia Morgan. In Santa Cruz, he designed the Pogonip Club House, the replica of the Santa Cruz Mission, Santa Cruz City Hall, Modern Baking Company and various auto-related buildings in downtown Santa Cruz. He also designed private residences in Santa Cruz County. In 1931, he went into business with C.J. Ryland and D.M. McPhetres. Lee Dill Esty died in 1943.

**SIGNIFICANCE**

The property was found eligible for the California Register of Historical Resources under Criteria (3). The building is not individually significant to the development of the downtown area. Although it was one of a number of auto-oriented uses along Front Street, the important pattern of development of this portion of the downtown has lost much of its historic setting, and thus would not appear to be eligible under Criterion (1). The personages associated with the original auto dealership on this property are not known to be historically significant, therefore the property would not appear to be eligible under Criterion (2) with information available. The building is a distinctive representative of its time - an architect-designed Mission Revival-style commercial building, and appears eligible under Criterion (3).

When considered for listing within the Historic Building Survey of the City of Santa Cruz, the property meets the following criteria:

1. The building is a significant example of the built heritage of the city as a representative of 1920s buildings constructed to serve the emerging auto service industry;
5. The building possesses special aesthetic merit and value due to its quality of architecture, retaining sufficient features that show its architectural significance;
6. The building possesses distinctive stylistic characteristics of Mission Revival; and
7. The building retains sufficient integrity to accurately convey its significance.

Integrity

The property maintains most of its historical integrity as per the National Register's seven aspects of integrity. It maintains its original location on Front Street, in downtown Santa Cruz at the edge of the San Lorenzo River; it is still surrounded by much, but not all of its apparent historic setting, including surrounding commercial buildings of similar age, scale and design and parcels with similar setbacks, parking, and streetscape. It retains its early-twentieth-century commercial scale and feeling and continues, through its form, massing and detailing, to illustrate its associations with minor patterns of commercial design in the twentieth century. Although altered, the front façade retains its integrity with Mission-Revival style, including the shaped parapet and unusual Art Deco ornamentation. The storefront alterations are compatible with the original character-defining materials and workmanship, and the integrity of the subject property appears to have been preserved.