

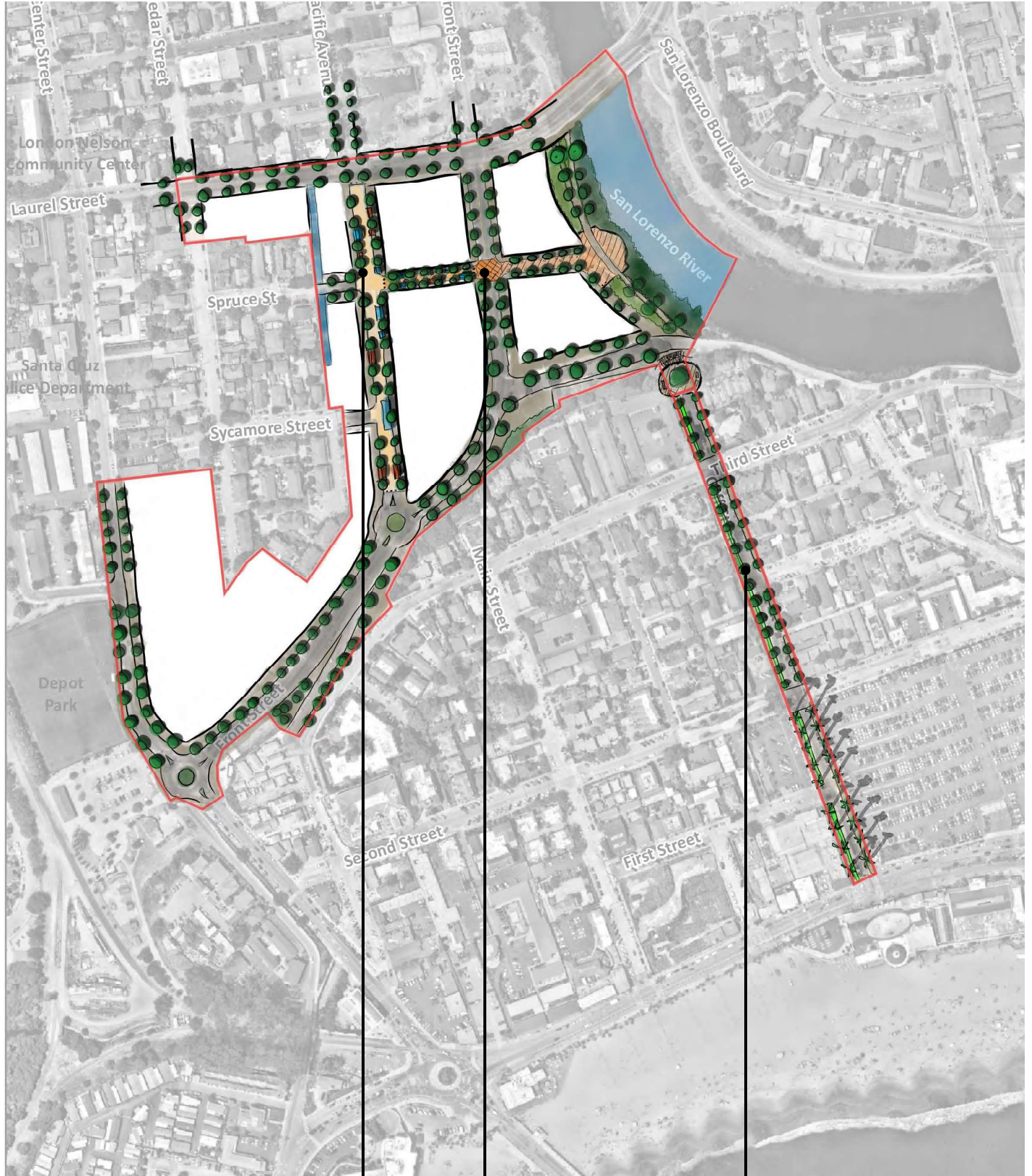
# CIRCULATION & STREETScape



# Our Three “Big Ideas” Regarding Circulation and Streetscape

1. Re-routing the Laurel St Extension could create new opportunities for civic space while maintaining/improving east-bound traffic flow.
2. Incorporating “Flex Zones” on Pacific could allow for a wider variety of events and activities in the area.
3. Maintaining and enhancing existing connections for pedestrians and cyclists is a core component of the plan.



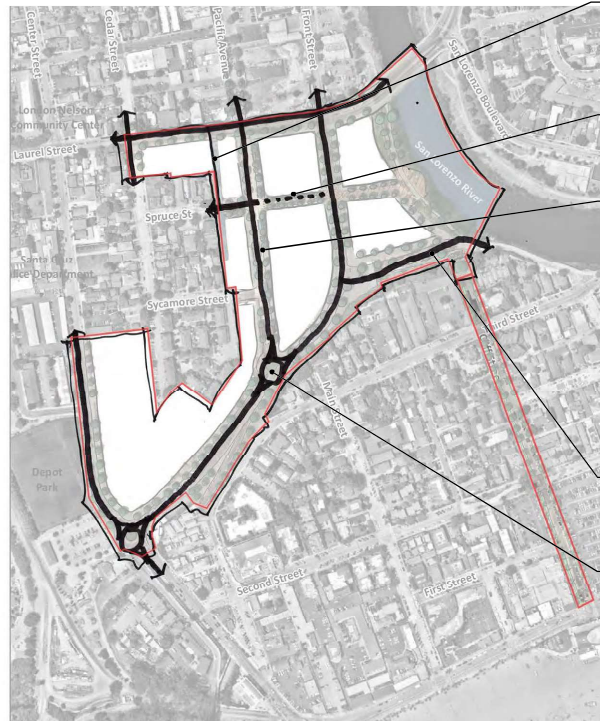
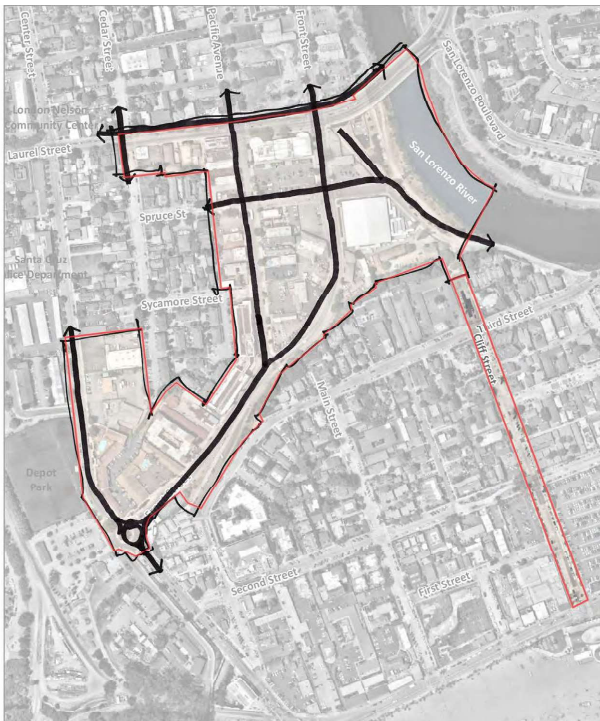


Pacific Avenue retail street with diagonal parking "Flex Zones"

Spruce Street Plaza with enhanced crossing at Front Street

Cliff Street enhancements





New service / access alley to avoid curb cuts on Pacific Avenue

Spruce Street partial / timed street closure creates

Pacific Avenue improvements: Shared street and "Flex Zones" with possible street closures during events

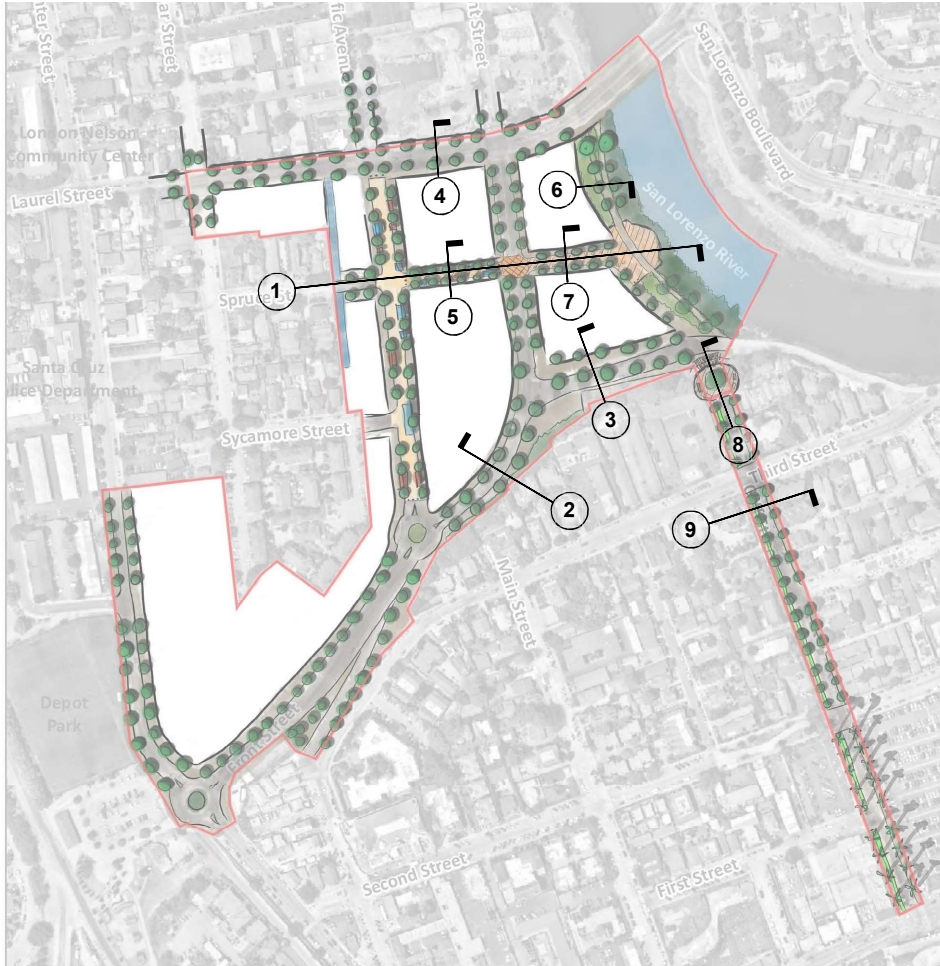
Realign Laurel Street Extension

New roundabout

**Existing**

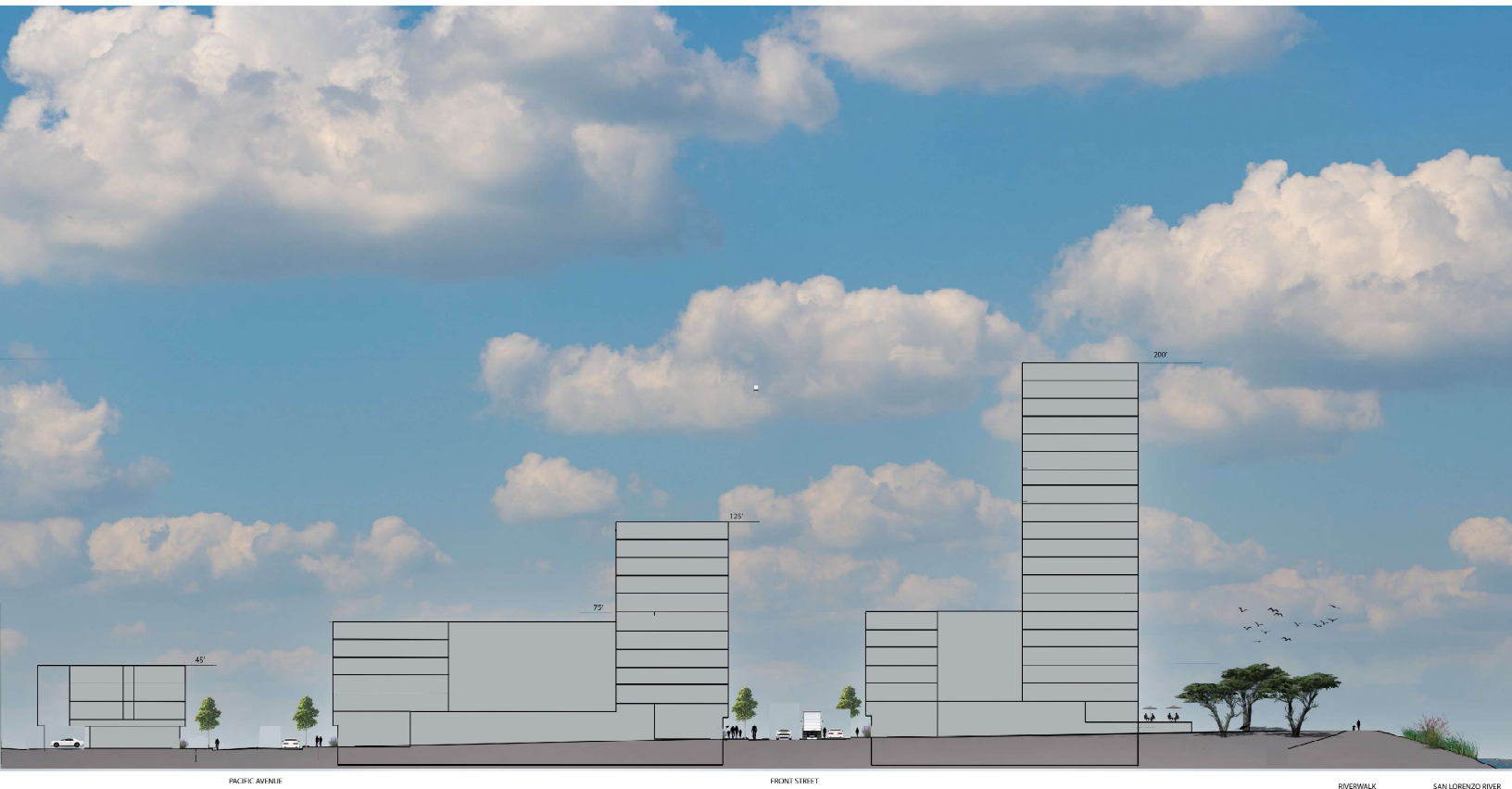
**Proposed**





DOWNTOWN PLAN EXPANSION

SECTION KEY



PACIFIC AVENUE

FRONT STREET

RIVERWALK

SAN LORENZO RIVER



SECTION 2 FRONT STREET @ BEACH HILL

12  
11



SECTION 3 REALIGNED LAUREL STREET @ BEACH HILL





SECTION 5 SPRUCE ST. BTWN PACIFIC AV. & FRONT ST.

