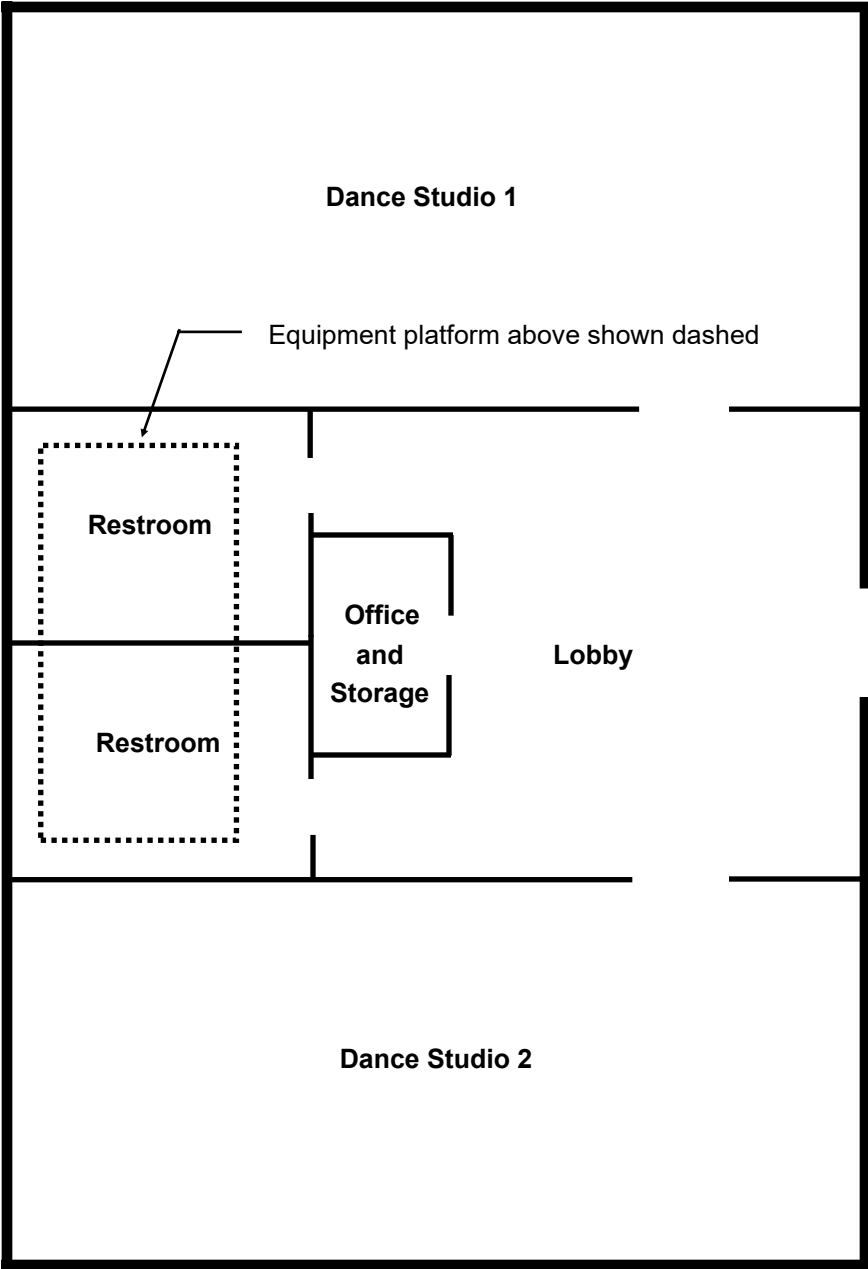


COLLIGAN THEATER

EXISTING ADJACENT ARTIST RESIDENTIAL BUILDING



**Tannery Dance and Performance Building
Proposed Interior Revisions 19Sept2022**

Not to Scale

Notes

- 1. See also "Proposed Revision to Building Footprint 19Sept2022".
- 2. See additional notes next page.

Additional Notes:

- a. Ventilation in studios - ceiling fans, cross ventilation (high openable windows?).
- b. Sound insulation.
- c. Resilient floors.
- d. Windows high on east/west wall - fixed or openable.
- e. Storage space - approximately 60 sq.ft. for tables and chairs; may require incorporating into one of the studios.
- f. Janitorial sink - incorporate into one of the bathrooms.
- g. Eliminate closed lobby.
- h. Access studios through office/lobby.
- i. Eliminate movable divider wall between studios; install fixed partition wall instead.
- j. Eliminate roll-up garage doors.
- k. Eliminate cubbies/storage .
- l. Flip building horizontally; access from east side.