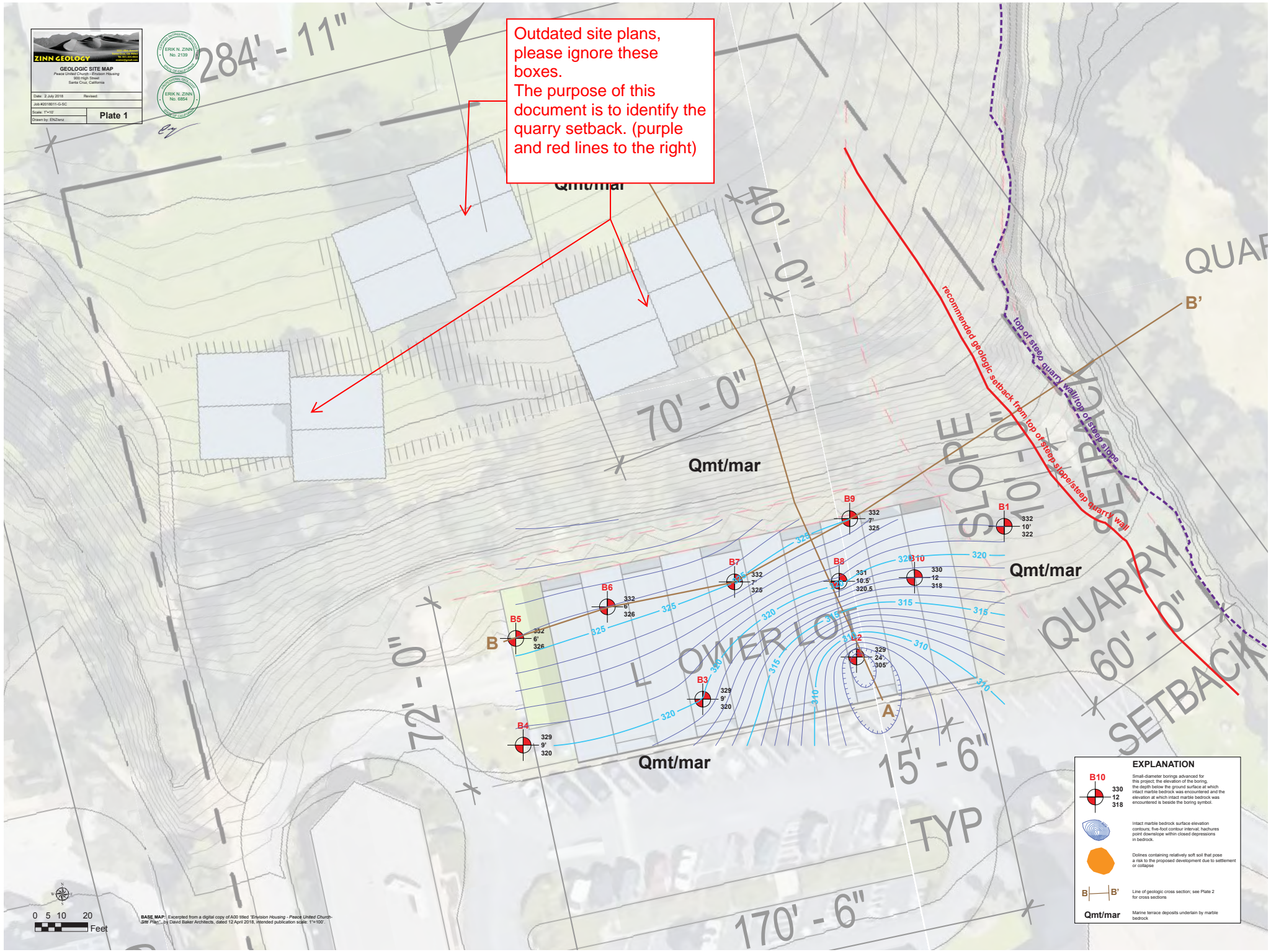


**ZINN GEOLOGY**  
**GEOLOGIC SITE MAP**  
 Peace United Church - Expansion Housing  
 800 High Street  
 Santa Cruz, California

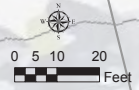
Date: 2 July 2015      Revised:  
 Job #010811-G-05  
 Scale: 1"=10'      **Plate 1**  
 Drawn by: EJC/ward



Outdated site plans, please ignore these boxes.  
 The purpose of this document is to identify the quarry setback. (purple and red lines to the right)



EXPLANATION	
	<b>B10</b> Small diameter borings advanced for the project; the elevation of the boring, the depth below the ground surface at which intact marlite bedrock was encountered and the elevation at which intact marlite bedrock was encountered is beside the boring symbol.
	<b>330</b> Intact marlite bedrock surface elevation contours; five-foot contour interval; hachures point downslope within closed depressions in bedrock.
	Dolites containing relatively soft soil that pose a risk to the proposed development due to settlement or collapse.
	Line of geologic cross section; see Plate 2 for cross sections.
	Marlite terrace deposits underlain by marlite bedrock.



BASE MAP: Incorporated from a digital copy of ADO titled "Expansion Housing - Peace United Church - Site Plan" by David Baker Architects, dated 12 April 2016, intended publication scale: 1"=100'.