



SANTA CRUZ HISTORIC BUILDING SURVEY

VOL. II

SANTA CRUZ HISTORIC BUILDING SURVEY — VOL II

Department of Planning and Community Development
CITY OF SANTA CRUZ

Selections and research by John Chase
Architectural writing by Daryl Allen
Designed and produced by Jeanne Gordon

May, 1989

INTRODUCTION

Volume I

The Santa Cruz Historic Building Survey is contained in two volumes. Volume I was prepared in 1976 by the firm of Charles Hall Page & Associates. With amendments, it contains 329 properties. As noted in the acknowledgements to Volume I, although the urban history of Santa Cruz is summarized in that report, no attempt was made to research the history of individual structures. Information contained in Volume I was drawn from existing sources, primarily the excellent and exhaustive work of John Chase, published as *The Sidewalk Companion to Santa Cruz Architecture*.

As pointed out in Volume I, the City of Santa Cruz is fortunate to possess a great number of fine buildings representing the City's cultural and urban development through time. Although there have been some significant losses of fine architecture through the years, much of the City remains intact. The evolution of Santa Cruz from an early commercial port to a world-renowned recreational site, to the educational, commercial and government center of today is well represented in the City's architecture.

Concern that this architecture would fall prey to development pressures experienced in many other cities and towns in California led to enactment of the City's Historic Preservation Ordinance. The purpose of this ordinance is to enable the City to identify and give some protection to those structures designated as having particular historic, architectural and engineering significance. In order to catalogue structures deserving such protection, the City commissioned the Volume I inventory of older buildings produced by Charles Hall Page & Associates. That volume contains historical background which provides an overview of the urban history of the City of Santa Cruz and the architecture which reflects development from approximately 1850 to 1930.

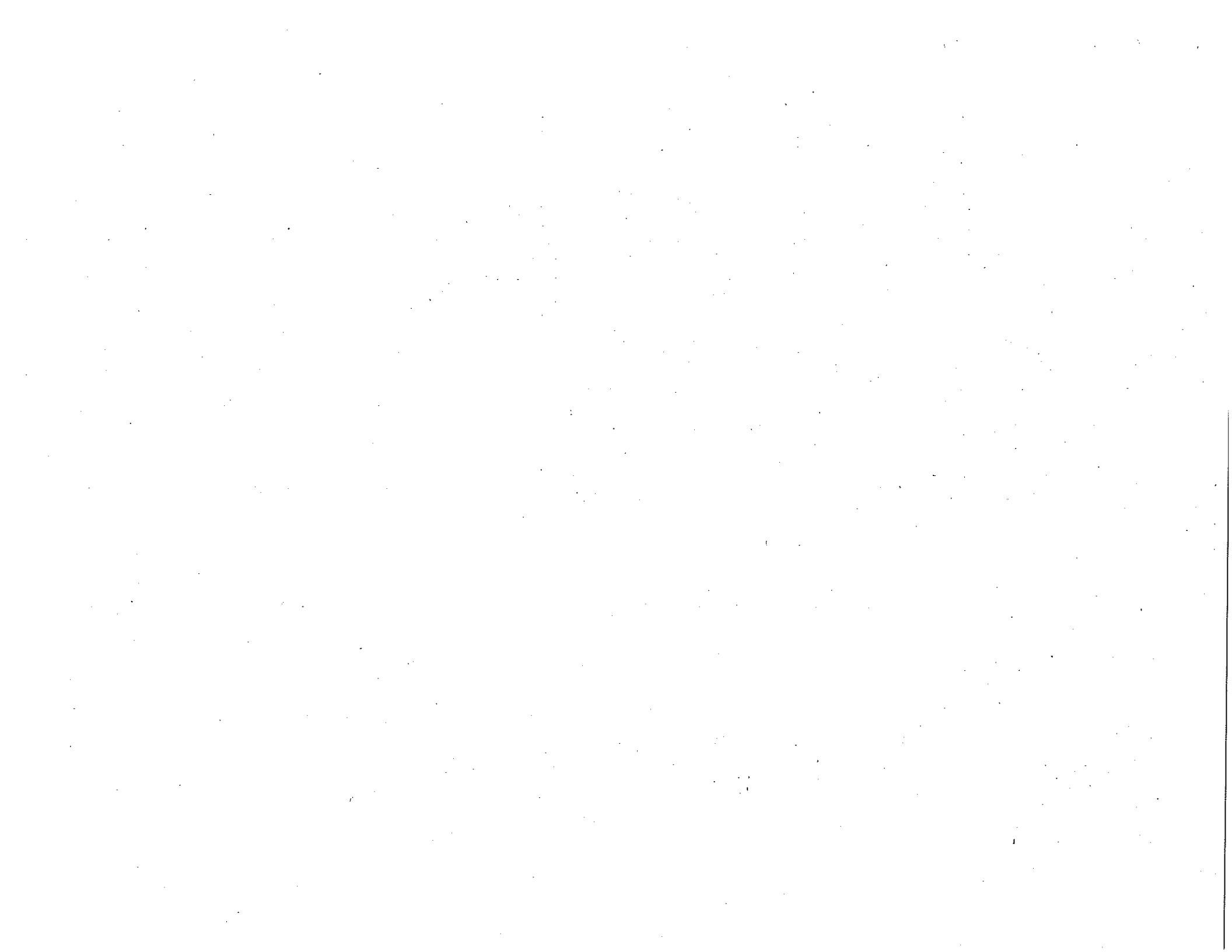
Volume II

In the years subsequent to publication of Volume I, the City's Historic Preservation Commission continued its efforts to recognize other historically significant buildings within the City. This led to development of another inventory, created primarily by the City with the assistance of

John Chase. Volume II was printed in 1989. This volume includes structures from three categories: significant buildings from 1930 to 1950, important structures not included in the first survey, and significant vernacular buildings from 1850 to 1910. Most of the dates assigned to structures are estimates which establish a general time frame when the buildings were likely constructed.

Volume II catalogues a total of 330 additional structures. Many of these buildings are individually significant. In several instances, the significance attaches to a group or row of structures. In the aggregate, they are important and they often represent what a neighborhood looked like at a previous time. These groupings are scattered throughout the City, and provide opportunities to walk down a street and see how things looked in another historical era. Approximately one-half of the buildings in Volume II are vernacular structures.

As was noted in the introduction to Volume I, many of the buildings in this survey are residences. The privacy of those living in these homes should be respected.





119 Alhambra Avenue
Vernacular
1895-1900

An interesting house combining several styles. The sweeping roof encompassing the second floor and attic is Shingle style, while the front wing is an earlier, more vertical style. The house was moved here from East Cliff Drive in 1978.



428 Barson Street
Vernacular
1870

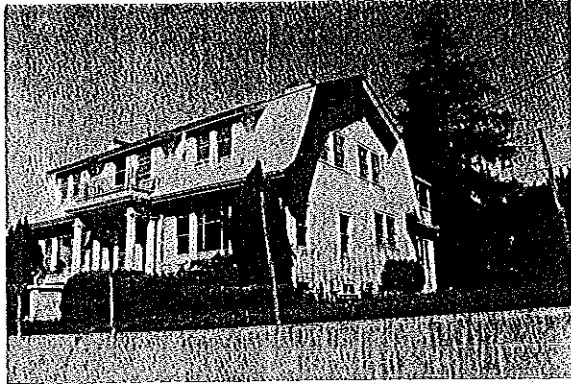
A fairly intact example of the vernacular farmhouse. The residence retains a number of its original 6/6 windows.



515 Barson Street
Queen Anne Cottage
1880

A small house with a raised floor level, front gable decoration, and hipped roof of the Queen Anne style. The porch has been enclosed at a later period.





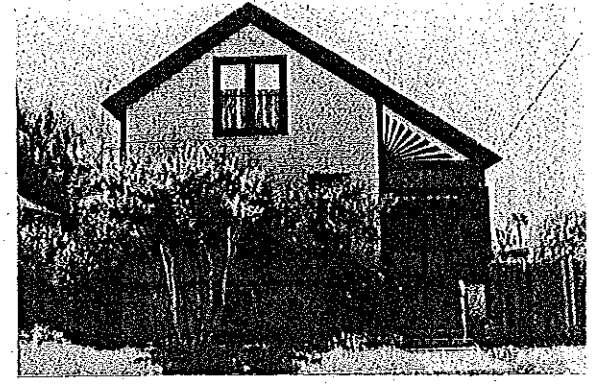
227 Berkeley Way
Colonial Revival
1920

A gambrel roofed version of the stately Colonial Revival style. Classical columns support the porch to create a formal entrance.



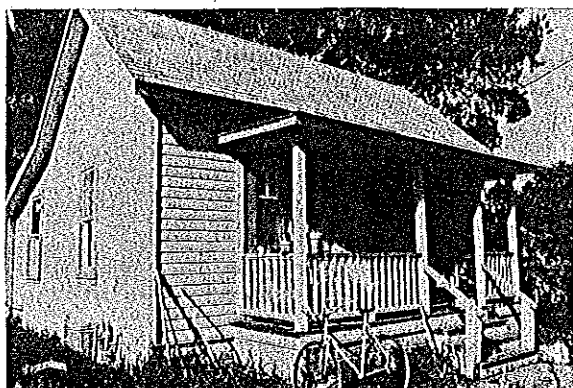
325 Berkeley Way
Craftsman
1910-15

At the facade, windows with multipaned sash above and clear panes below suggest the influence of the Craftsman style. An oversized column supports the porch roof.



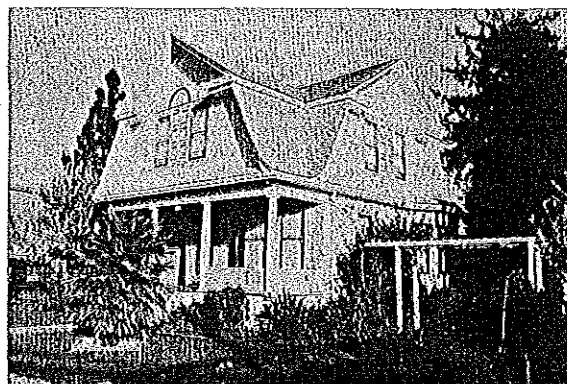
151 Bixby Street
Vernacular
1900

A sunburst decoration over the porch is a Folk Victorian touch decorating a basic pre-1900s house.



123 Blackburn Street
Vernacular
1865-75

An early frontier two room house with shed roof rooms on back. Original windows are replaced by a later type, yet house retains the integrity of its original shape.



742 North Branciforte Avenue
Shingle
1900

Displays the sweeping gambrel roof and Palladian window popular during its era of construction.



775 North Branciforte Avenue
Vernacular
1900-05

A pleasing cottage decorated by Queen Anne style finials at the roof ridges and decorative shingles at the gable end.



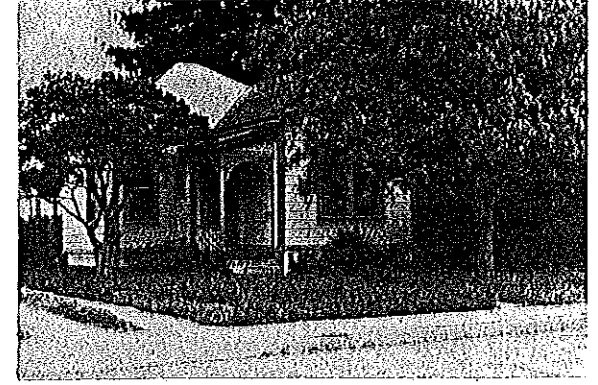
1062 North Branciforte Avenue
Craftsman
1915

A well-detailed Craftsman bungalow with an unusual curving porch roof. Applied wood trim to simulate English half-timbering decorates the facade.



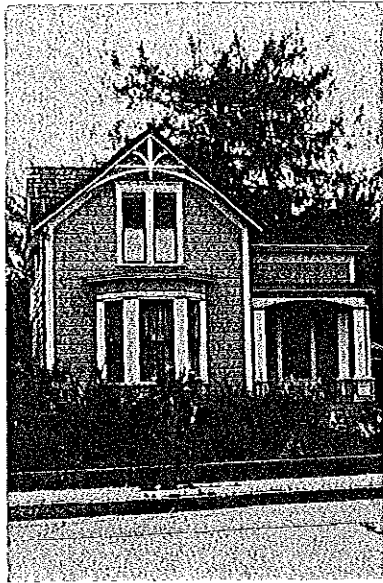
202 South Branciforte Avenue
Vernacular
1865-75

An early farmhouse style building which retains its original siding and 2/2 windows.



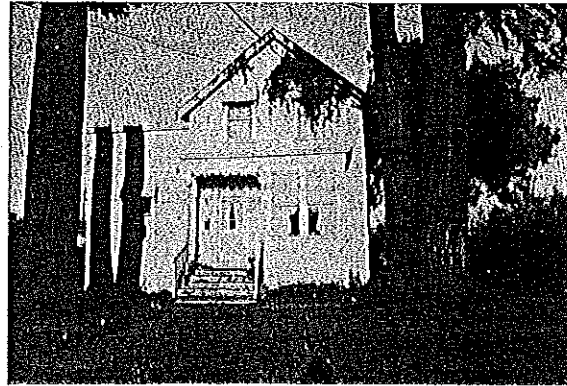
222 South Branciforte Avenue
Vernacular
1885

A hip roofed variation of the L-shape plan house. Sawn wood filigree and spindle balusters decorate the porch and railing.



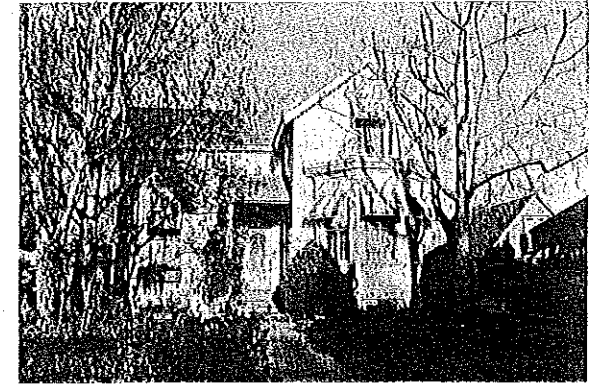
235 South Branciforte Avenue
Vernacular
1880

A handsome residence of the farmhouse style with a pleasing bay window and Eastlake style decorative truss at the gable.



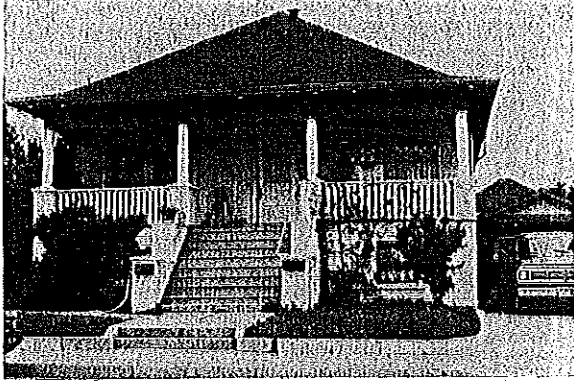
320 South Branciforte Avenue
Vernacular
1870-80

A flat roofed porch and bay window decorates this two story vernacular residence.



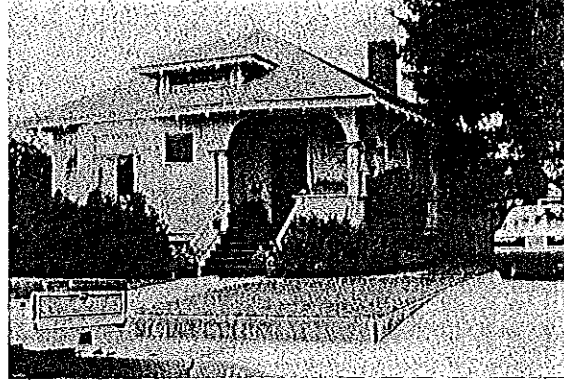
424 South Branciforte Avenue
Italianate
1865-75

A slanted bay window and flat roofed portico gives this residence its Italianate appearance. The later-era awnings detract from the handsome bay window.



430 South Branciforte Avenue
Colonial Revival
1900-05

A symmetrical residence with a generous porch and a raised main floor. Small diamond shaped panes of glass in upper sash of front windows add a touch of class.



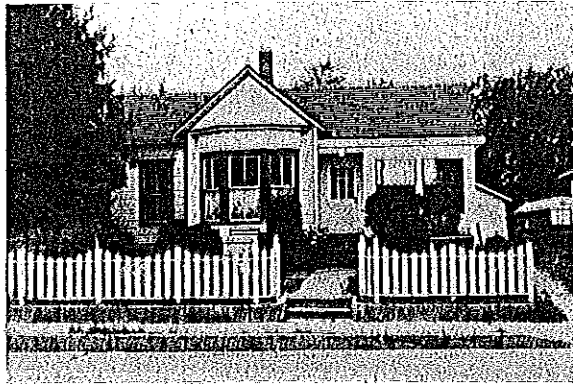
519 South Branciforte Avenue
Colonial Revival/Craftsman
1905

A recessed front porch with columns supporting an arch creates an inviting entry to this comfortable house. A dormer peeks out of the attic.



520 South Branciforte Avenue
Colonial Revival
1900

Graceful flattened arches supported by paired columns enclose an entry porch. Ornamentation highlights the cut away corners over the bay window and decorative shingles enhance the gable end.



523 South Branciforte Avenue
Vernacular
1865-75

Drop siding and tall double hung windows are evidence of its early construction date. An oversized bay window decorates the facade.



511 Broadway
Vernacular
1895

A rowhouse with a blend of Queen Anne and Colonial Revival characteristics. A combination of gables, decorative panels at the bay window, and fancy shingles create a lively facade.



518 Broadway
Stick-Eastlake
1885

The facade is decorated with a profusion of 90° angle gables. Entry porch displays Eastlake style turned spindles and balusters.



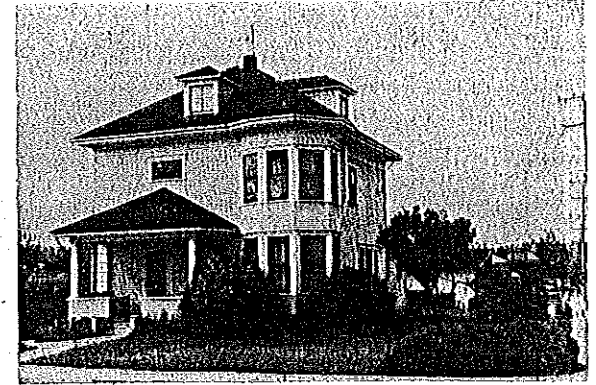
817 Broadway
Colonial Revival
1900

A rounded balustrade over the front porch is an unusual and pleasing detail. Porch was probably glassed in at a later date.



901 Broadway
Stick-Eastlake
1880-85

An imposing two story residence with a delicately detailed second floor porch and balustrade over the bay window.



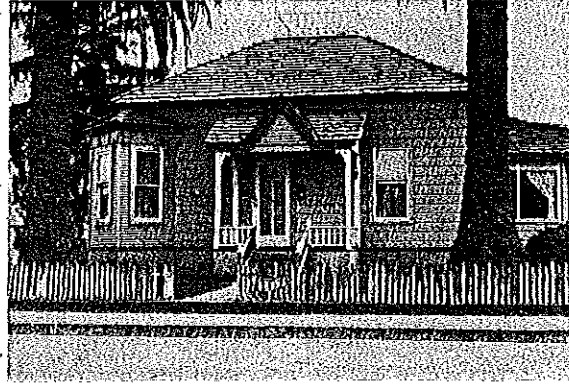
1023 Broadway
Queen Anne/Colonial Revival
1900-1905

Situated on a prominent site, a corner tower and strong forms distinguish this residence.



1111 Broadway
Eastlake
1885-90

A basic farmhouse on the L-plan is distinguished by a bay window and fish scale shingles on the gable end.



1124 Broadway
Vernacular
1880-85

A cottage of mixed vintage which retains its 19th century charm.



1215 Broadway
Vernacular
1880-85

A pleasing scale and complexity of rooflines contribute to the architectural significance of this cottage.



1408 Broadway
Eastlake
1885

Decorative wood panels and window trim dress up the front of this cottage. An historic type picket fence contributes to the authentic appearance of this corner site.



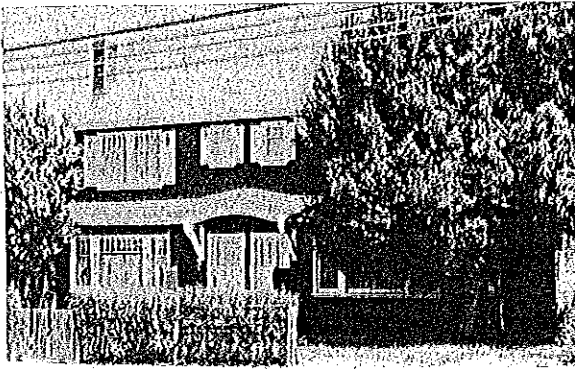
212 Caledonia Street
Vernacular
1880

An early addition to a simple L-plan cottage creates a very unique house for its time. Graceful capitals at the porch columns dress up the facade.



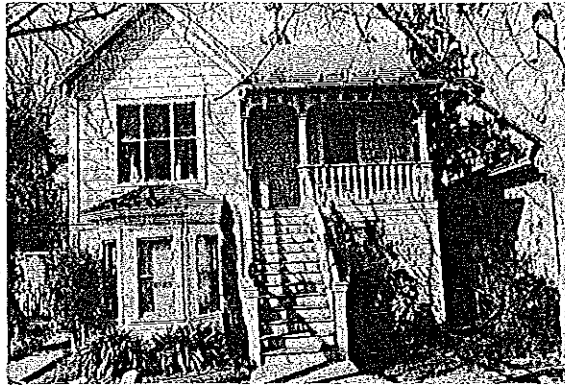
241 California Street
Craftsman
1900

A beautifully maintained bungalow. Except at the entry, the porch is roofed with "pergola" style (open) rafters, a popular Craftsman idea.



516, 518 California Street
Craftsman
1915

A two story Craftsman style duplex distinguished by an unusual curving porch roof which emphasizes the front door.



615 California Street
Eastlake
1875-80

A two-story Eastlake influenced residence with a slanted bay window. The stairs to the second floor is very unusual.



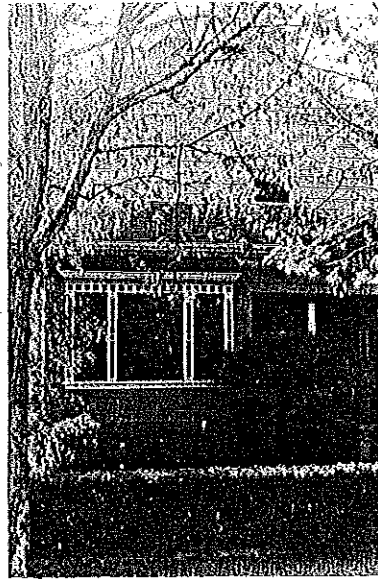
703 California Street
Vernacular
1870-80

A classic L-plan residence. 2/2 windows and porch posts appear to be original. Shed additions to the rear were likely added in the 19th century.



821 California Street
Vernacular
19th century

This two story residence of unknown vintage is enhanced by its paint color scheme and decorative work in the gables. A few 2/2 windows and early siding date it to mid-19th century.



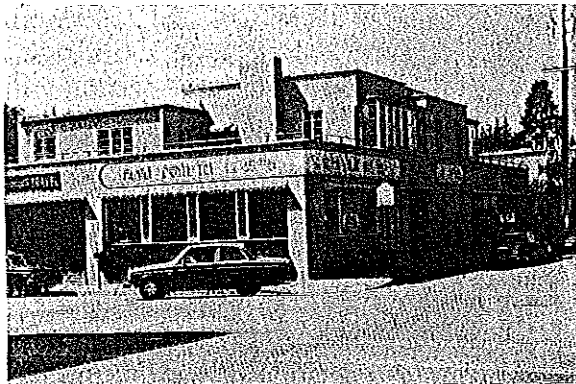
827 California Street
Vernacular
1870-80

A handsome two story residence. Fancy wood trim surrounds the 2/2 windows on the gable end. Front porch has been sensitively glassed in.



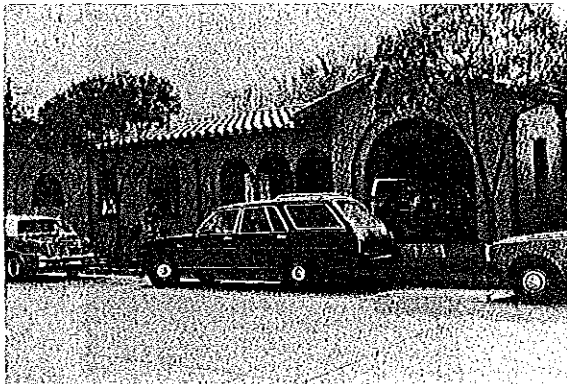
505 Cayuga Street
Stick Eastlake
1885

A tall narrow row house with a small "L" addition to one side. Porches at the front and at the L are decorated with delicate scrollwork at the posts.



905 Cedar Street
Atteridge Building
Moderne
1948-51, C. J. Ryland

Built for Judge and Mrs. J. C. Atteridge, this commercial complex exhibits an attractive arrangement of volumes. The stuccoed surfaces are accented by steel casement windows and pipe railings at the balcony. Architect Ryland of Monterey also designed Santa Cruz City Hall and Monterey City Hall.



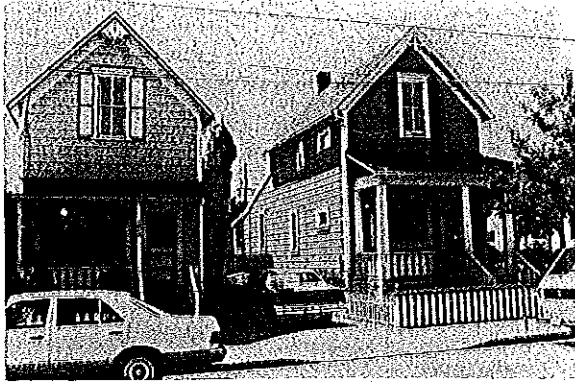
913, 915 Cedar Street
Spanish Colonial Revival
1925-30.

A pleasing scale and outstanding detailing such as copper gutters and downspouts give this commercial building its distinction.



1003 Cedar Street
Santa Cruz Hotel
1877, Charles Kaye, Building Designer

Although its original architectural style is altered, the building is significant because of its continued use as a commercial enterprise in downtown Santa Cruz for over 100 years.



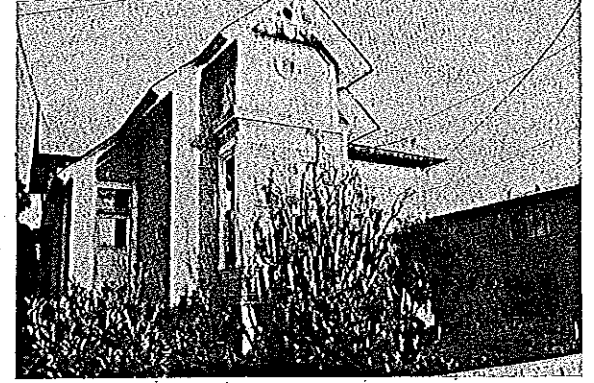
1013, 1015 Cedar Street
Vernacular
1865-75

Two rowhouses remain (there were originally three) giving a flavor of a mid-19th century streetscape.



301 Center Street
Louden Nelson Community Center
Spanish Colonial Revival
1928, John J. Donovan

A highly successful use of Spanish Colonial detailing in a school building. Adapted for reuse as a community building, the colorful structure is very appealing. The carved and brightly painted trusswork in the auditorium is particularly noteworthy.



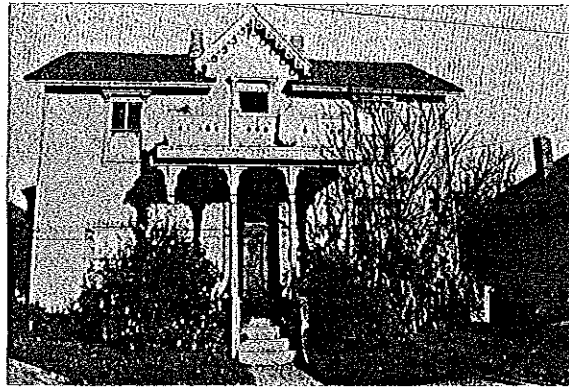
310 Center Street
Stick Eastlake
1885

This residence retains the rectangular bay window, bulls eye window in the gable end, and decorative trusswork of the Stick and Eastlake styles.



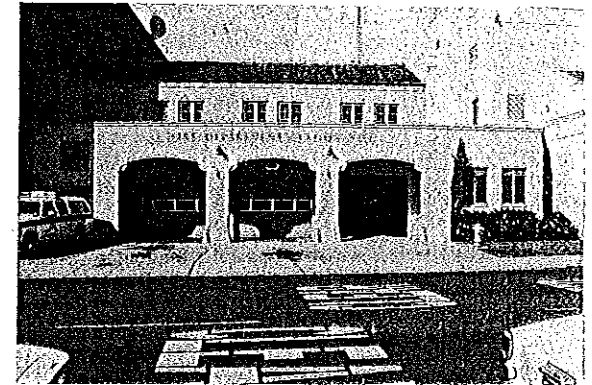
314 Center Street
 Vernacular
 1880

A cottage of mixed architectural styles. The slanted bay window, arched gable window, and bracketed eaves are Italianate influenced. The prominent gable end decorated with round shingles and gable ornament are from later styles.



416 Center Street
 Vernacular
 1877

Built for Christian Werner by carpenters Butler and Wadsworth. Despite minor alterations, this residence retains its original side bay window and front entry porch.



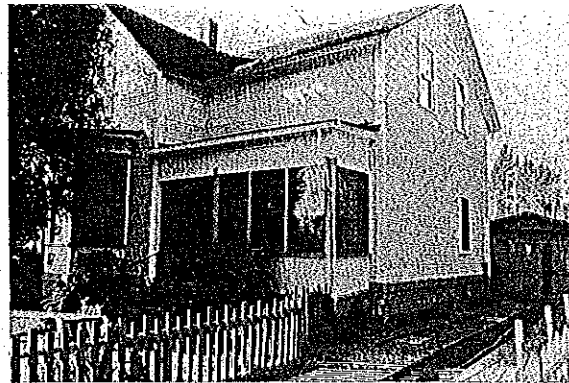
711 Center Street
 Santa Cruz Fire Station #1
 Mediterranean
 1939, Mark Daniels

An arcade of segmental arches frames the garage doors and well designed overflow scuppers decorate the facade as well as drain the roof. The upstairs living quarters are set back from the street and have a covered walkway on the back. The overall design is in complete harmony with its neighbor the Civic. This is one of the most sensitively designed buildings on its street.



314 Chestnut Street
Vernacular
1870

A basic farmhouse style without applied decoration. The plain facade is broken up by an entry porch and a steep pitched dormer.



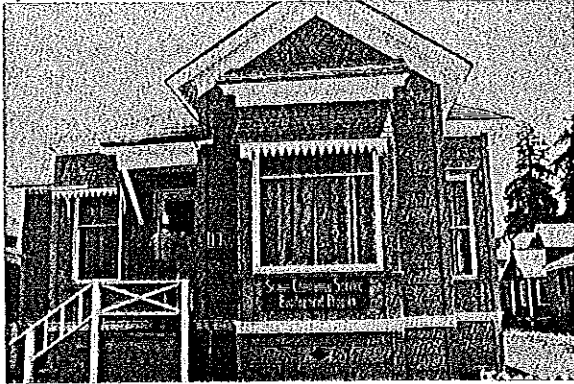
317 Chestnut Street
Vernacular
1875

A basic farmhouse on the L-plan distinguished by a slanted bay window.



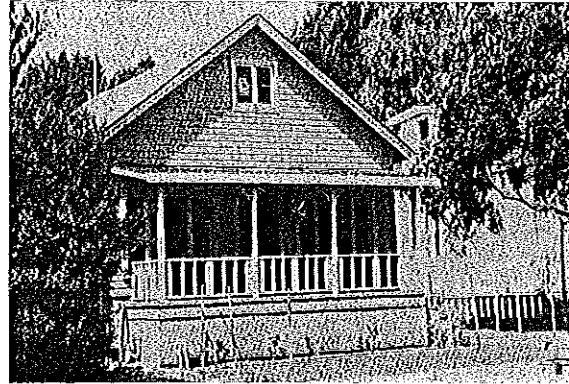
346 Chestnut Street
Vernacular
1880

A simple vernacular house with its original windows and evidence of the original tall Victorian front door.



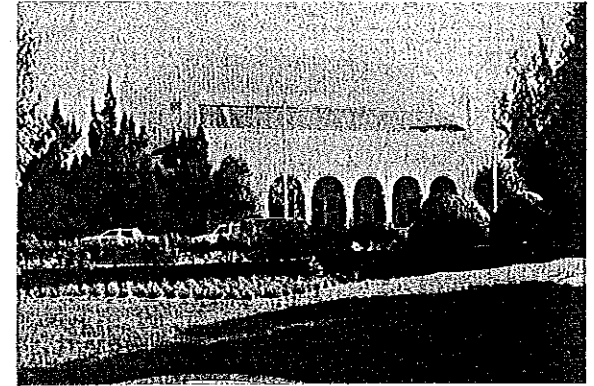
410 Chestnut Street
Vernacular
1885

A one story cottage with a raised main floor. The facade is broken up with an unusual interplay of multiple rooflines. A Folk Victorian sawtooth trim decorates two prominent windows on the facade.



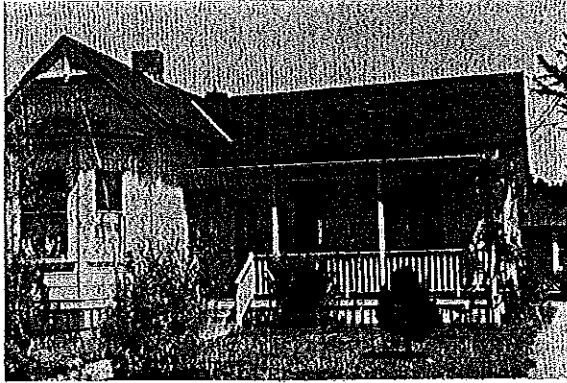
515 Chestnut Street
Vernacular
Late 19th century

A simple residence with front facing gable, shiplap siding, and raised floor. Porch has been remodelled.



307 Church Street
Civic Auditorium
Mediterranean Revival
1939

Because the building presents its lowest volumes nearest the street and steps back with its highest volume at the auditorium, its size does not overwhelm the site. The front arcade forms a dramatic entrance. Moorish details on the parapet wall of the highest area add to the Mediterranean effect.



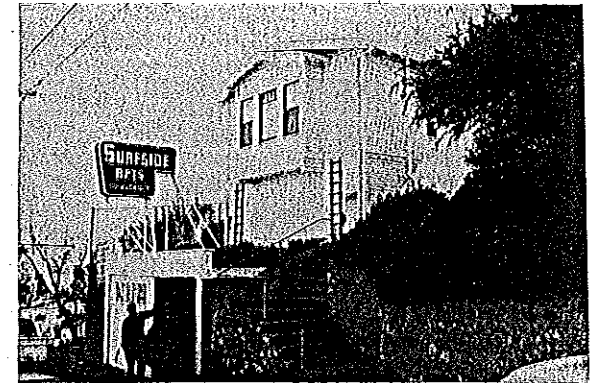
116 Clay Street
Vernacular
1875-90

An L-shaped plan cottage with a slanted bay window and Eastlake gable ornament.



202 Cleveland
Colonial Revival/Shingle
1905

An imposing two story house of a style sometimes called Classic Box. The flared wall shingles at the second story are an interesting touch of the Shingle style.



311 Cliff Street
Surfside Apartments
Vernacular
1890-1915

Vacation cottages interesting for their prominent siting on Beach Hill. Few examples of early beach cottages remain in Santa Cruz.



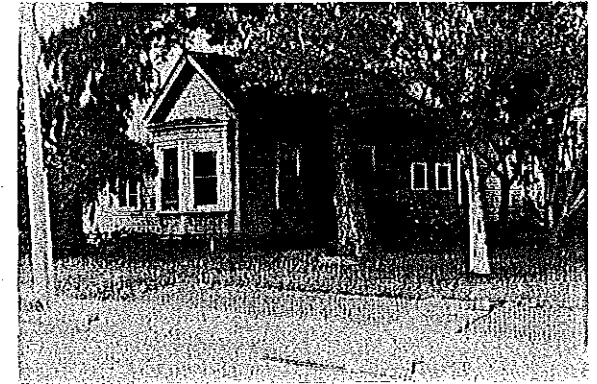
121 Cypress Avenue
Vernacular
Late 19th century

An early hip roofed cottage with board and batten siding and 2/2 windows on the north side can be seen under this remodelled residence.



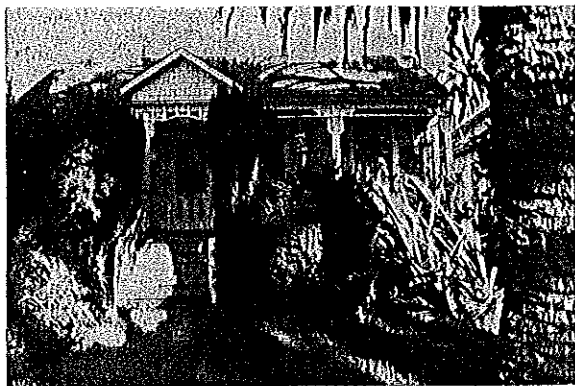
207 Cypress Avenue
Vernacular
1880-1900

A two story porch makes this small hip roofed residence memorable.



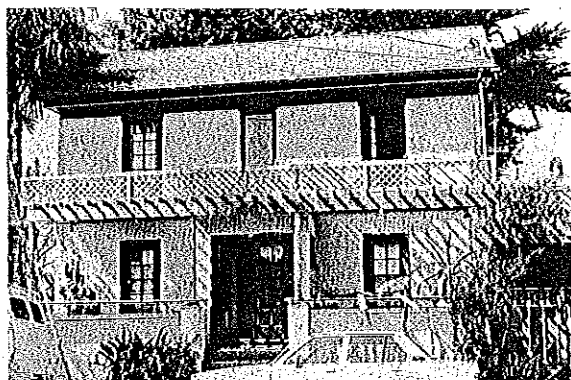
324 Darwin Street
Vernacular
1865-75

A slanted bay window and original siding enhances this charmingly scaled cottage. The porch has been sensitively enclosed. The original configuration of the building is evident, despite multiple additions to the rear.



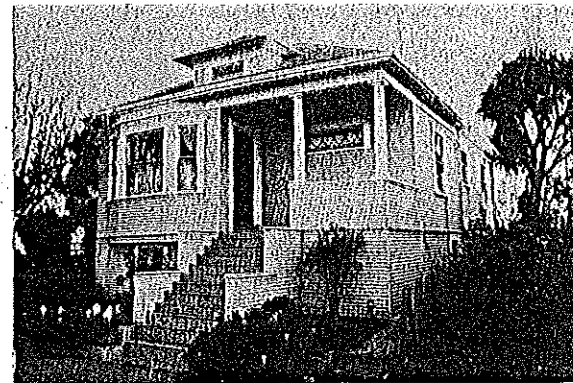
1009 East Cliff Drive
Vernacular
1880

A tiny cottage which retains its original porch decorated by spindlework and a small gable. A board and batten covered barn of the same vintage remains on the back of the lot.



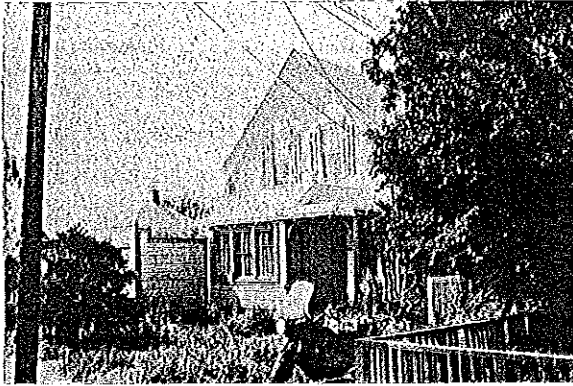
112 Elm Street
Vernacular
1850-65

This residence was the home of Granville and Mary Shelby and was moved from the corner of Pacific and Elm. Granville Shelby was the "town's principle builder, its first furniture maker and its first undertaker" according to the Centennial edition of *Riptide*. Much remodelled, the house was probably originally built in the Greek Revival style.



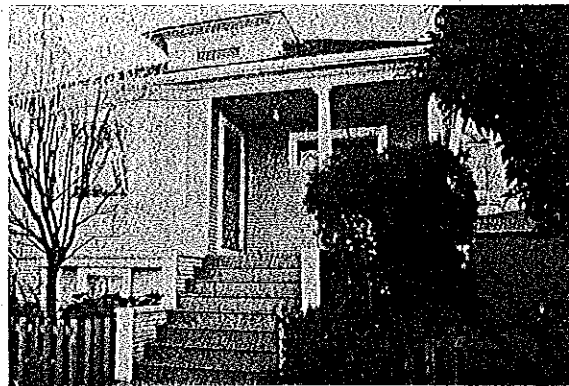
211 Elm Street
Colonial Revival
1890-1915

This is one of a set of four "neoclassic" rowhouses, all exceptionally well preserved, which made up an early housing development which is unique to all of Santa Cruz. It is a Colonial Revival rowhouse on a raised foundation with a hipped roof and dormer window. The porch is recessed within the perimeter of the house with classical columns supporting the porch roof.



214 Elm Street
Vernacular
1865-70

This one and a half story house is on property originally owned by D. D. Dodge and may be the Dodge home.



215 Elm Street
Colonial Revival
1895-1915

A rowhouse identical to 211 Elm Street. These houses were typically detached and built side by side in a line on narrow lots. This house type is a one story version of the larger Classic Box style.



217 Elm Street
Colonial Revival
1895-1915

The last of four remarkably well preserved rowhouses. It is unusual to have this number of basically unaltered examples of the neoclassic rowhouse with original siding and unaltered porches and columns. Taken as a group, the houses preserve the appearance of turn-of-the-century Santa Cruz.



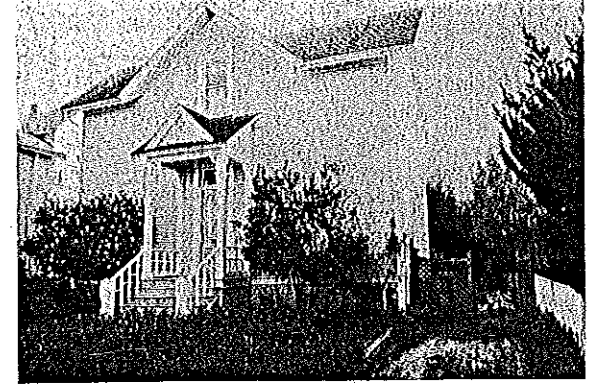
307 Elm Street
Vernacular
1870-85

A two story residence retaining details of Stick and Eastlake styles.



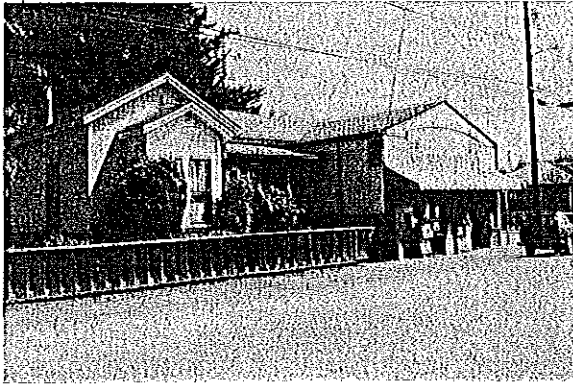
311 Elm Street
Vernacular
1870-85

An attractive Italianate portico with pierced wood porch brackets enhances this residence. The house retains its original 2/2 windows.



315 Elm Street
Vernacular
1879-85

A beautifully preserved one and a half story residence. The windows are framed with elaborate mouldings which become part of the decorative scheme.



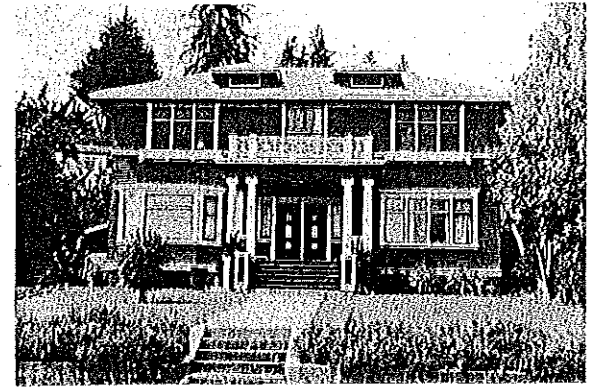
304 Emeline Avenue
Vernacular
1890

A "Mom and Pop" market with living quarters attached, fast becoming an endangered species of dwelling.



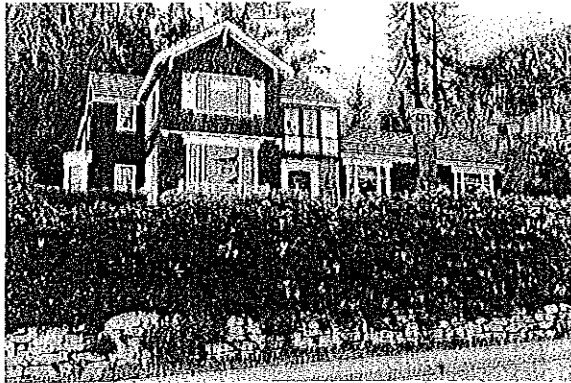
316 Escalona Drive
Colonial Revival
1908, William H. Weeks

This was originally the Duncan McPherson home, founder of the *Santa Cruz Sentinel*. It was moved to this location in 1955. Weeks was a noted architect who worked throughout California and masterfully produced designs of many different styles.



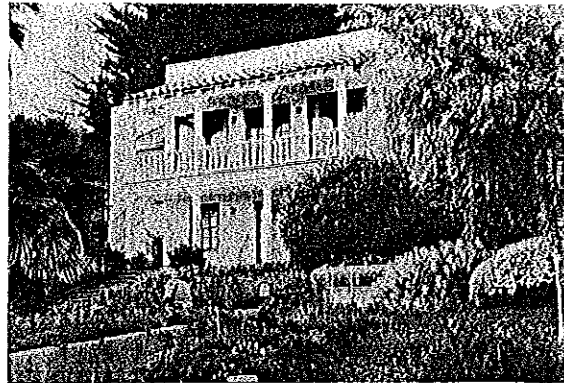
322 Escalona Drive
Colonial Revival
1910

An almost symmetrical facade creates an air of formality in this residence. The flat porch roof is supported by columns and is topped with a balustrade.



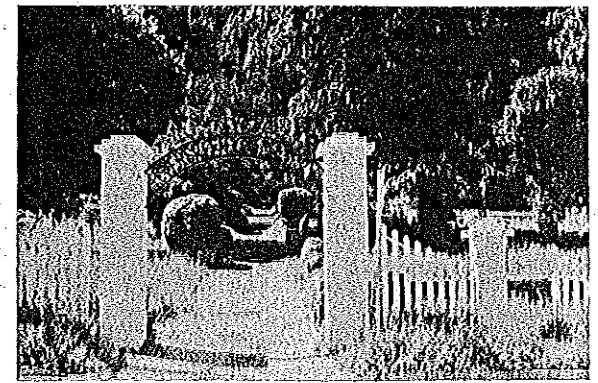
662 Escalona Drive
Tudor
1933, William H. Weeks

Built by Dr. Alfred Phillip, this late Medieval style residence is influenced by the California-based Craftsman style. A two story section projecting over the first story with exposed rafter ends, as can be seen on the facade, and a prominent chimney are Tudor touches. With its dark stained shingles, it blends nicely with the wooded environment.



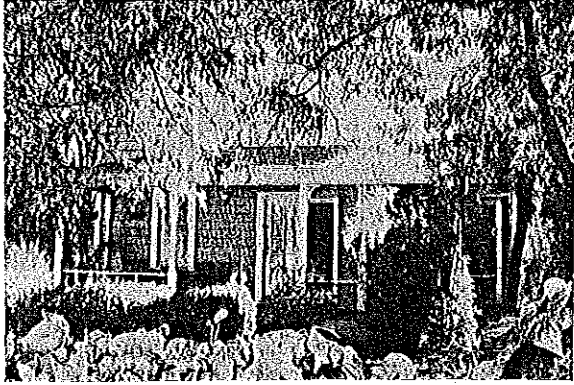
1420 Escalona Drive
Spanish Colonial Revival
1936

A stuccoed frame house which has taken on a double portico, reminiscent of Monterey style adobes. An outdoor stairway and multipaned casement windows are also typical of the Spanish Colonial style.



261 Evergreen Street
Evergreen Cemetery
1858

The oldest continuously used cemetery in Santa Cruz. Many persons from the annals of Santa Cruz history are buried here including early Hispanic settlers, mountain man Isaac Graham and his daughter, Hiram Scott family members, and children of F. A. Hihn. The cemetery contained an area for early Chinese immigrants.



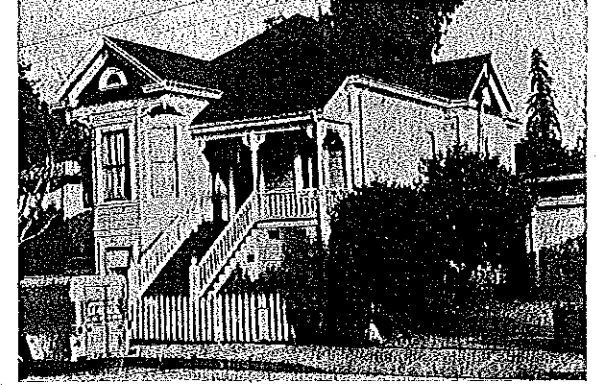
144 Fernside Street
Vernacular
1880

A two story residence with a full front porch embellished with turned porch posts and graceful decorative brackets.



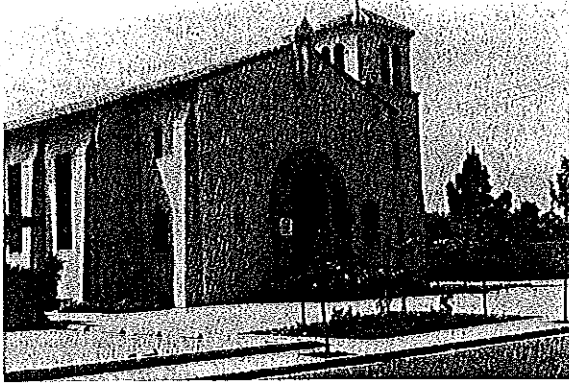
128 Franklin Street
Stick-Eastlake
1885

A handsome gable end facade distinguished by the strong vertical lines of boards and brackets at the first story bay and brackets supporting the gable ornament. Tall corbelled chimneys reinforce the vertical lines.



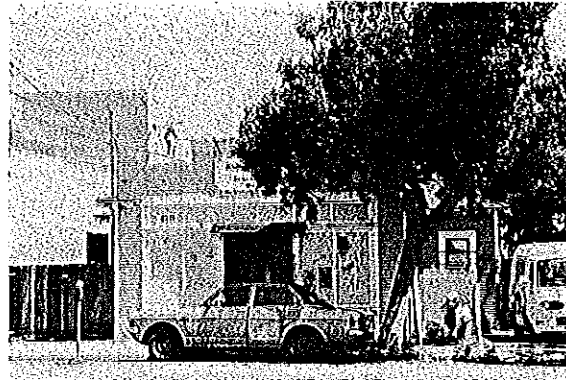
147 Franklin Street
Queen Anne Cottage
1890

This cottage is dressed up with ornaments at the cutaways over the front bay window, returned eaves, and lunettes in two gables. Turned porch posts are decorated with brackets and the main floor is raised.



515 Frederick
Star of the Sea Church
Spanish Colonial Revival
1948, Vincent Buckley

One of the last of the notable Spanish Colonial Revival structures built in Santa Cruz in the popular 1920s style. The arched front door accented by heavy plaster door surrounds strongly identifies the entrance. A tile roofed bell tower flanks the church's gable roof and buttresses line the long sides of the building.



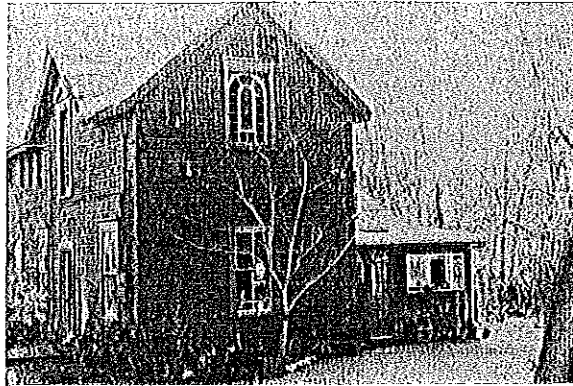
420 Front Street
Western Vernacular
1910

This falsefront commercial structure with clapboard siding retains most of its original appearance on the facade. Few examples of falsefront commercial buildings remain in Santa Cruz.



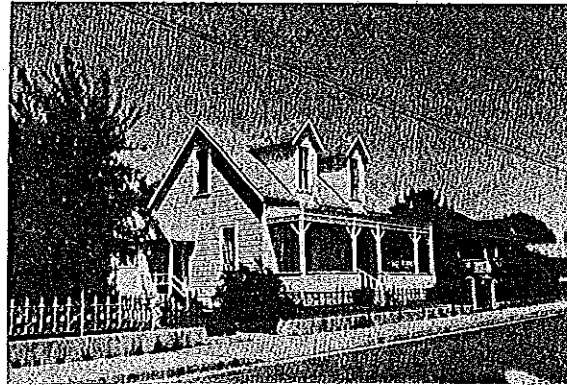
224 Gault Street
Vernacular
1850-70

The original early settler residence with full porch is apparent despite a crazyquilt approach to adding on. The result is a unique accumulation of structures.



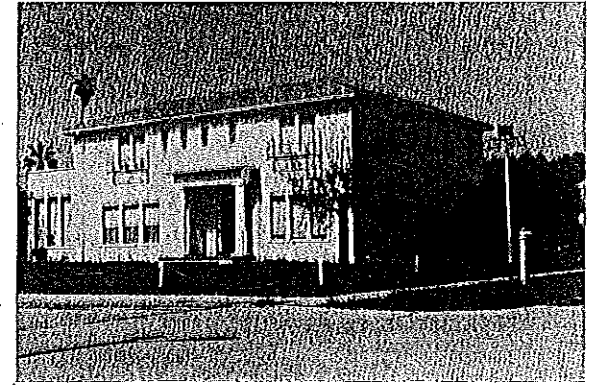
335 Golf Club Road
Vernacular
1870

A simple residence with only a dormer breaking up the side-gabled facade. The house is unadorned except for a pediment over the front window. Original siding and many 2/2 windows remain.



407 Grant Street
Vernacular
1870-80

Tall gabled dormers and the full length horizontal porch with diagonal porch support braces create a strong architectural composition. A decorative ironwork fence adds to the historically authentic appearance of the site.



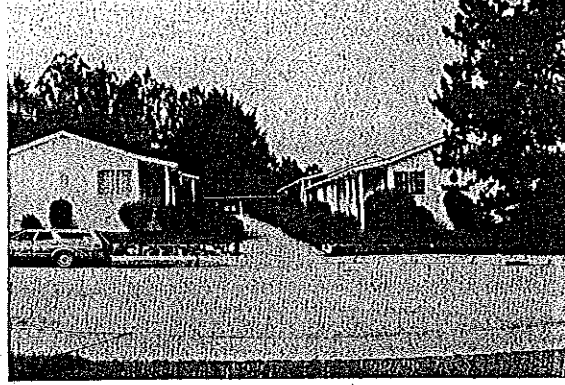
217 Hammond
Italian Renaissance Influence
1920

An almost symmetrical facade with an entry emphasized by columns distinguishes this residence. Balconies are present at the second story windows on the front. A small one story wing projects to break up the symmetry.



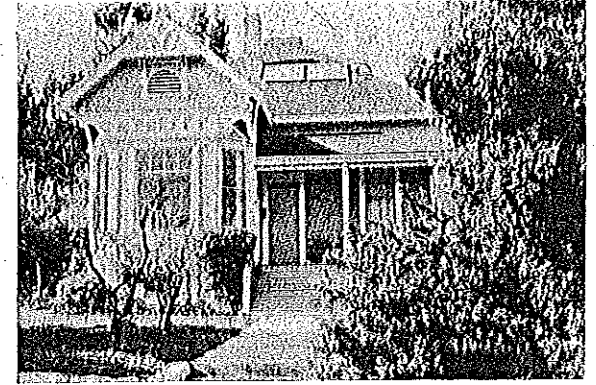
209 High Street
Jackson Sylvar Saloon and Residence
Vernacular
1872; remodelled 1888

Originally a false-front saloon located on Mission Plaza, it was later moved to its present location and remodelled. It retains its full balcony from the original design and a wing has been added on to one side.



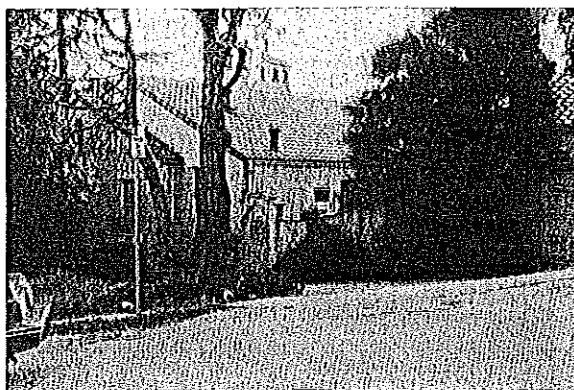
234 High Street
La Cuesta Manor
Monterey Colonial Revival Influence
1939

An apartment complex with one story wings to form a U shape, a layout influenced by Early California rancho designs in which low adobe wings surround a courtyard. The simple covered walkways are fashioned after the *corredors* of the Mexican/Spanish builders. The apartments step up the sloping site in an attractive manner.



246 High street
Queen Anne
1895

A classic Queen Anne cottage with a dominant embellished front facing gable and cutaway bay window. The hipped roof may have had a decorative topknot at its highest point at one time.



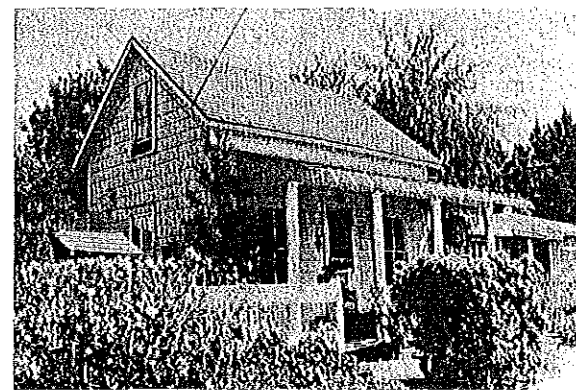
304 High Street
Spanish Colonial Revival
1925

A good example of the Spanish Colonial Revival style. The entry is an arched gate opening into a courtyard formed by wings of the residence and garage. Roof tiles and elaborate chimney pots embellish the roof.



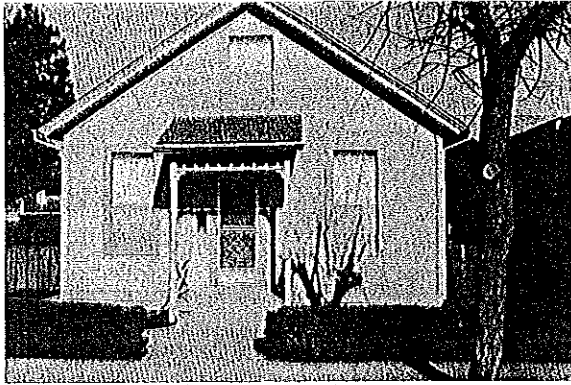
218 Highland Avenue
Craftsman/Shingle
1910

The use of river rock in its broad front porch is an attribute of the Craftsman style while the sweeping, all enclosing roof shows Shingle style influence.



120 Jackson
Vernacular
1865-75

A simple side gabled dwelling which retains its original 2/2 windows and channel rustic siding. The trellised porch is a later addition which, because of its simplicity, complements the original house design.



112 Jenne Street
Vernacular
1900

One of a pair of simple, identical cottages with clapboard siding and Eastlake style porches. These dwellings were no doubt built on speculation.



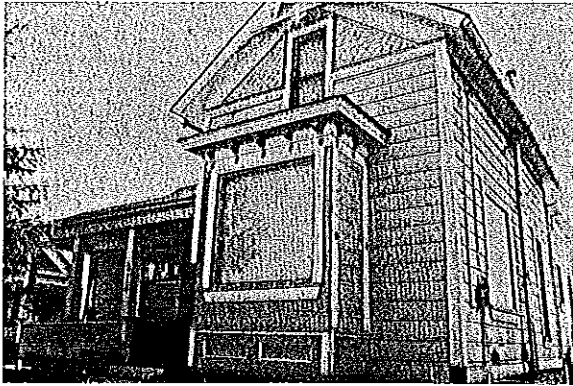
118 Jenne Street
Vernacular
1900

The other cottage in the matching pair. The small porch is embellished with turned posts and a spindled screen just under the porch roof.



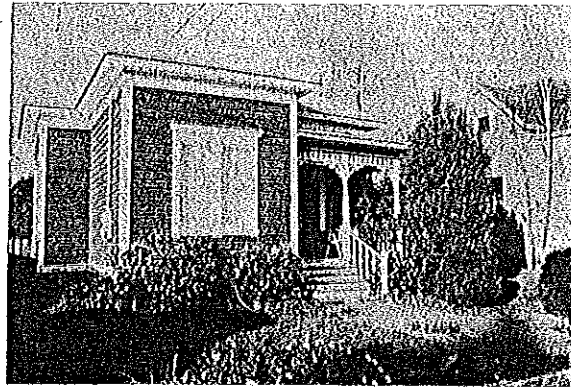
124 Kennan Street
Eastlake
1870

An Eastlake influenced cottage with turned porch posts, a gable ornament, and a straightsided bay window. This type of house was built for moderate income families.



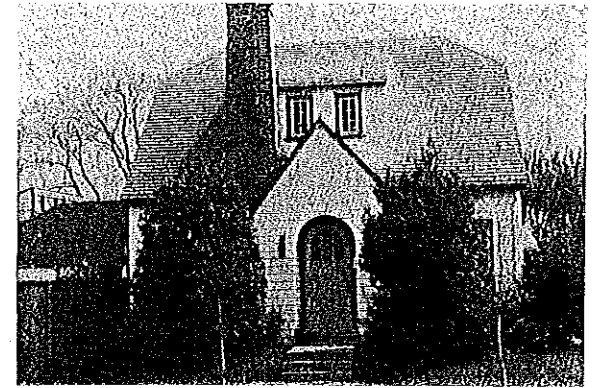
314 Keystone Avenue
Stick/Eastlake
1885

Corner boards and a straight sided bay window emphasize the verticality of this one and one-half story residence. The house uses the L-plan with a side porch.



323 Keystone Avenue
Vernacular
1885

An one story cottage with Queen Anne influence. A scalloped screen at the porch roof and decorative balusters enclose the porch.



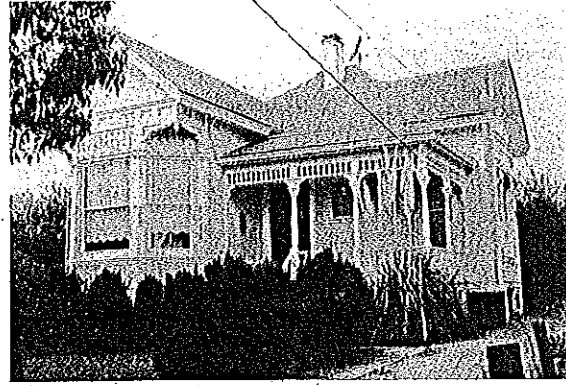
925 King Street
Period Revival
1920

The steeply pitched gable which defines the entrance is a Tudor style element while the shingled roof which is hipped at the ends of the ridge suggests a thatched roof. Elements of European country cottages — French, English, and German — were often mixed together in one design.



1014 King Street
Queen Anne
1890

A modest Queen Anne cottage embellished with a gable ornament and flashed glass at the broad bay window. This cottage has a raised main floor.



1110 King Street
Queen Anne
1885

A Queen Anne cottage, while modest in size, which thoroughly articulates the style through its embellished front gable and elaborate porch. A screen of turned spindlework encloses the top of the porch and there are curving brackets at the turned porch posts.



1132 King Street
Spanish Eclectic
1925

An arcaded front porch and arched parapet creating a bay on the front facade suggest Spanish influence. An arched wing wall frames the driveway. The applied plaster scallops, circles, and "keystones" at the arches are unusual decorative touches.



1138 King Street
Queen Anne/Colonial Revival
1900

With its Queen Anne details restrained, this residence presents a rather formal appearance. The more recently added windows over the porch unfortunately detract from its historic appearance.



305 Laurel Street
Colonial Revival
1900

A group of three well-articulated, large houses create a turn of the century streetscape. This residence type typifies the subgroup called Neoclassic Rowhouse. The porch is supported by a shortened classical column with a terraced stoop leading down to the street.



309 Laurel Street
Colonial Revival
1900

A two story Classic Box type residence. An upper porch balustrade extends entirely across the building facade lending an elegance to an otherwise straightforward residence.



311 Laurel Street
Colonial Revival
1900

This most unusual residence is a hybrid of styles. Two prominent gables are outlined with curved fascia boards. The shingled gable front curves out to form the three sections of the angled bay window. The front door and sidelights show Craftsman period influence.



510 Laurel Street
Vernacular
1865-75

An early residence with 6/6 windows and original channel rustic siding. The wooden siding has been marked with vertical grooves to suggest masonry.



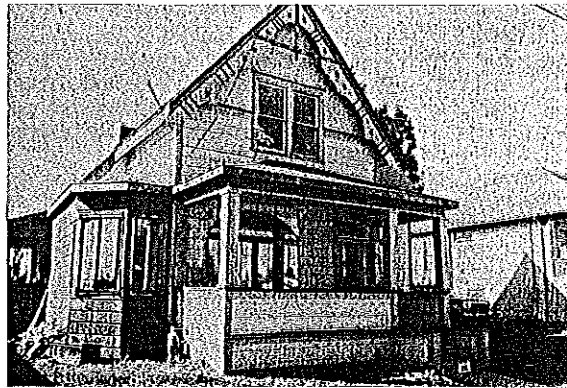
143 Laurent Street
Vernacular
1865-75

The classic farmhouse on the L-plan with 2/2 windows and channel rustic siding.



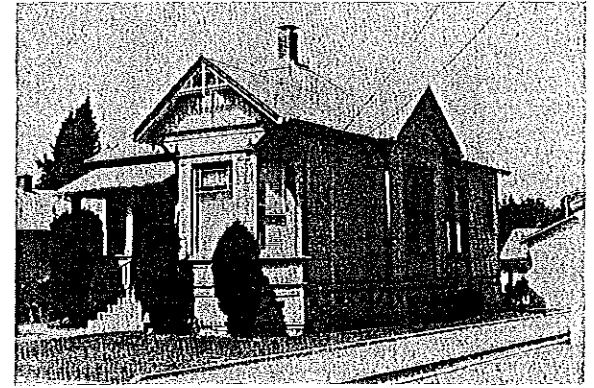
325 Laurent Street
Vernacular
1900

A turn of the century residence with a Shingle style-influenced sweeping roof. The flare in the roof where it meets the walls is repeated in the dormers and porch roof. The house has two slanted bay windows.



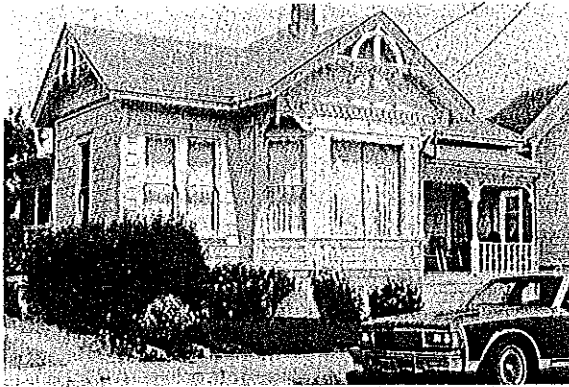
333 Laurent Street
Vernacular
1870-80

A two story residence on the L-plan. The front facing gable end has an oversized bargeboard somewhat awkwardly perforated and embellished. Remodelling of the front window has unfortunately altered the facade.



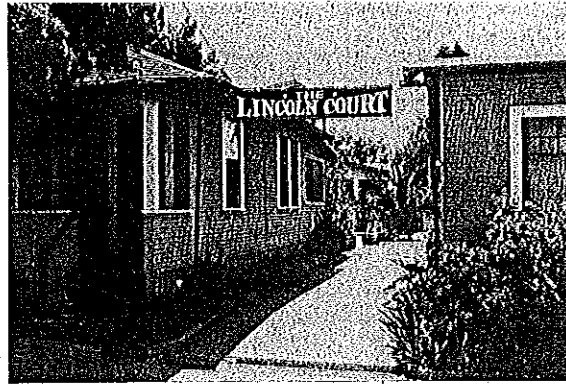
344 Laurent Street
Queen Anne
1890

The popular Queen Anne cottage with cutaway bay windows, flashed glass, and a variety of decorative treatments on the facade.



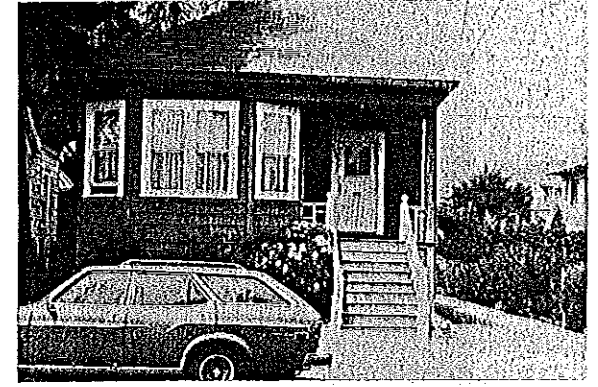
408 Laurent Street
Queen Anne
1890

A Queen Anne cottage with prominent gable ornaments. A band of round shingles above the bay window and edge shingles in the gable end further highlight the gable. The lacy screen at the top of the porch is a particularly pleasing embellishment.



317-321, and 323 Lincoln Street
Lincoln Court
Vernacular
1910

Influenced by both Craftsman and Colonial Revival styles, this group of bungalows form a court. The auto court was architecture's early response to the need to provide access and off street parking for automobiles. The number of auto courts remaining in Santa Cruz can be counted on one hand.



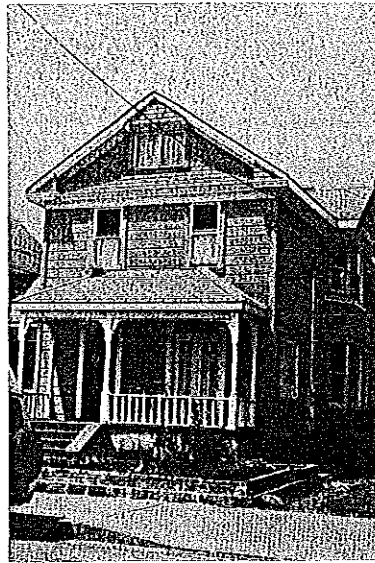
326 Lincoln Street
Vernacular
1890-1900

A simple residence with a raised main floor and a slanted bay of the Colonial Revival style. The porch is recessed under a hipped roof with steps reaching out to the sidewalk.



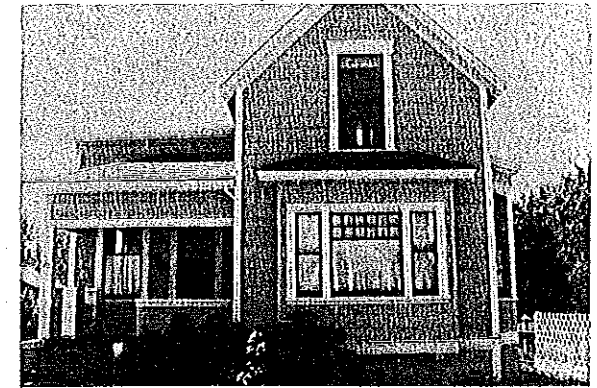
402 Lincoln Street
Colonial Revival
1890-1900

A good example of the Classic Box sub-category of Colonial Revival styles. This residence has a flat portico supported by classical columns which is typical of the style. The portico may have had, at one time, a balustrade at the porch roof.



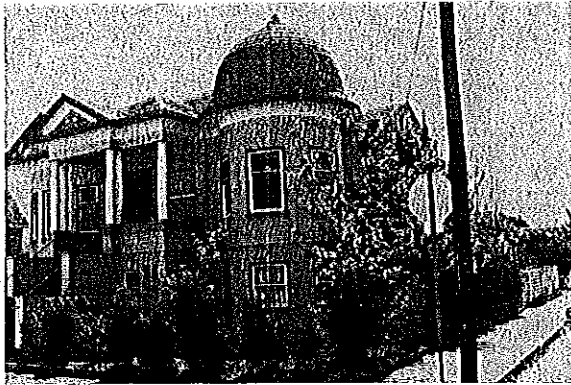
406 Lincoln Street
Vernacular
1870-1900

An unattached rowhouse designed for a narrow urban lot. The front facing gable has returned eaves and applied decorative treatment. There is a graceful two story cutaway bay window on one of the long sides of the house.



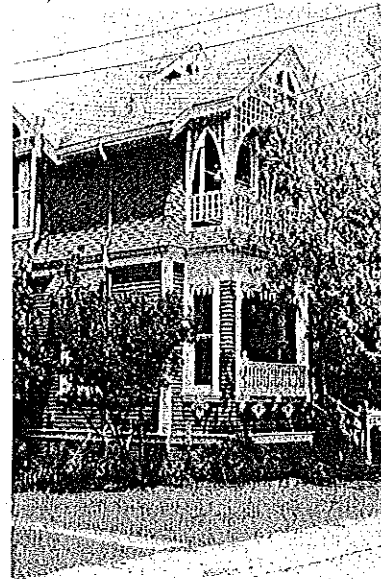
413 Lincoln Street
Vernacular
1875-79

A two story residence built on the L-plan. "In the late seventies in this yard were constructed the last gallows used here for hanging a prisoner," wrote Ernest Otto in 1942 (Chase, *The Sidewalk Companion to Santa Cruz Architecture*, p. 93).



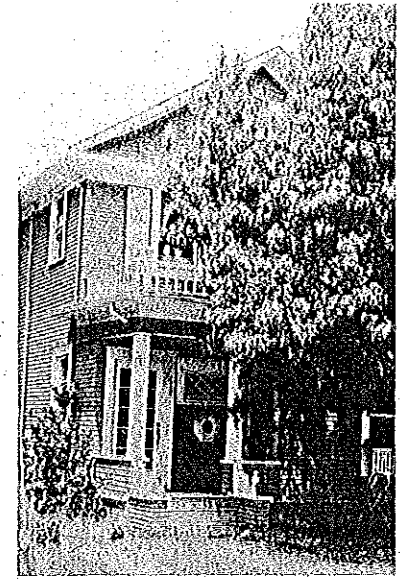
419 Lincoln Street
Queen Anne/Colonial Revival
1900

This residence has a prominent corner tower with an unusual S-shaped roof. The pediment and columns at the portico are very classical in contrast to the curvilinear roof of the corner tower. The main floor is raised to create a basement floor below.



504 Lincoln Street
Queen Anne
1898

An excellent example of the Queen Anne style. Wall surfaces are varied with different types of siding and shingles. The front bay window with a balcony above provides ample opportunities for embellishment with jig-sawn wood. The arches formed by trellis work at the balcony are popular in the Queen Anne style.



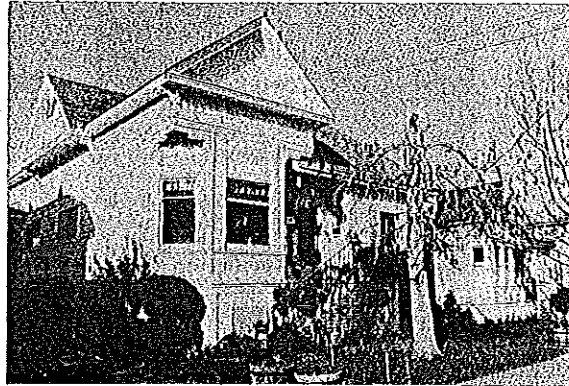
506 Lincoln Street
Colonial Revival
1898

The front portico is supported by raised columns and has a handsome roof balustrade. The residence is sided with narrow clapboarding with the exception of the front gable end which is shingled.



510 Lincoln Street
Colonial Revival
1898

A fine two story residence with all of its Colonial Revival details intact. The quoins at the corners (squarish decorative elements suggesting masonry reinforcements) are unusual on a building of this era as they were popular thirty years earlier.



520 Lincoln Street
Queen Anne
1895

A nicely maintained Queen Anne cottage with embellishments over the prominent cutaway bay window. Aluminum windows detract from the historic appearance of the residence.



320 Locust Street
The Wanzer-Cappleman-Reid House
Mixed styles
1867, 1885, and 1903

John Chase writes that the earliest section of the house may be the J. O. Wanzer residence built in 1867. The house was added to in 1885 by Cornelius Cappleman and again in 1903 by G. W. Reid. Because of the Stick style detailing, it is likely the entry bay with its mansard roofed dormer was built in 1885.



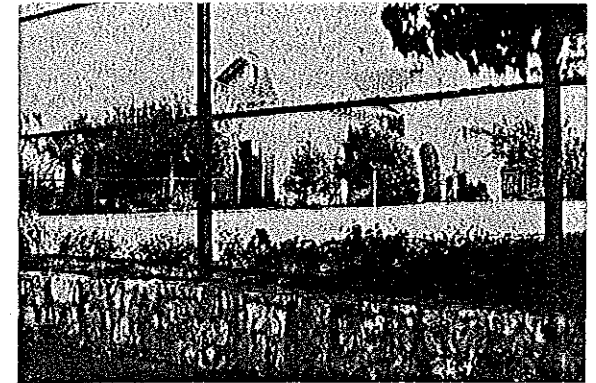
324 Locust Street
Vernacular
1857

Underneath this hodge podge of remodeling is the earliest home of Frederick A. Hihn, pioneer merchant and influential early developer in Santa Cruz. Originally built on his homestead property on Locust, this structure whose historic appearance is not known was moved across the street to make room for his mansion of 1872. Hihn came to Santa Cruz in 1851 and operated a mercantile business. He later turned his attention to real estate, becoming Santa Cruz's most active early real estate developer.



504 Logan Street
Queen Anne
1900

A Queen Anne cottage with a raised basement. The porch is decorated with turned posts and spindles. A most unusual decorative band of loops and sticks is suspended over the cutaway bay windows.



121 Main Street
Cerf Estate Cottage
Craftsman/Italian Renaissance
1916, George McCrea

Built at the site of a beach hotel which burned down, Judge Marcel Cerf constructed a large house (now used as the Casa Blanca Motel) with this accessory residence behind it. This well designed house, very likely by the same San Francisco architect as the main house, has an entrance framed by arches on the ocean side and a dramatic stone fireplace bay on the opposite elevation.



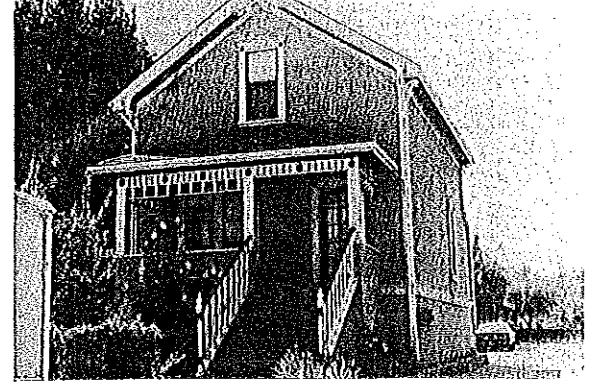
415 Maple Street
Greek Revival
1867

This Greek Revival-influenced residence was built for J. S. Green by John Morrow at a cost of \$1,900 in 1867. It was moved from Washington Street to its present site.



419 Maple Street
Queen Anne Cottage
1895

A round porch supported by classical columns at a front corner is a distinctive feature on this residence. It balances out a prominent decorated gable end over a cutaway bay window.



147 Market Street
Vernacular
1890

Decorative Eastlake-style woodwork at the front porch and gable end enhances this simple, very handsome, residence.



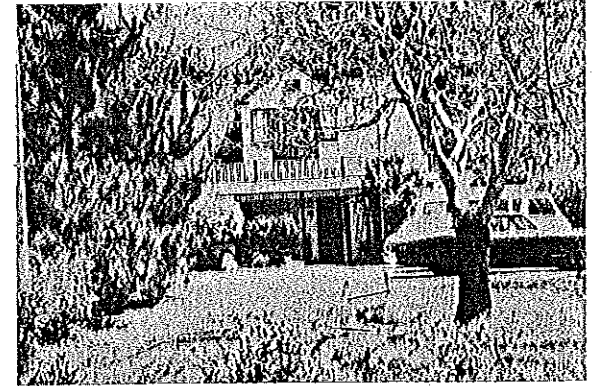
246 Market Street
Vernacular
1865

A Victorian farmhouse on the L-plan which retains its original siding and 6/6 window type.



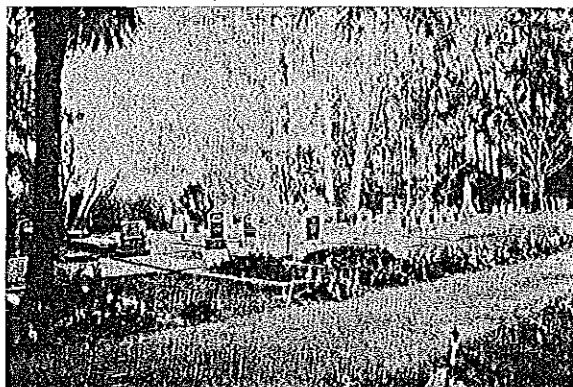
312 Market Street
Vernacular
1875

A dignified residence displaying both Italianate and Greek Revival influences. The single story porch, channel rustic siding, and 2/2 windows are characteristic of mid-19th century domestic architecture.



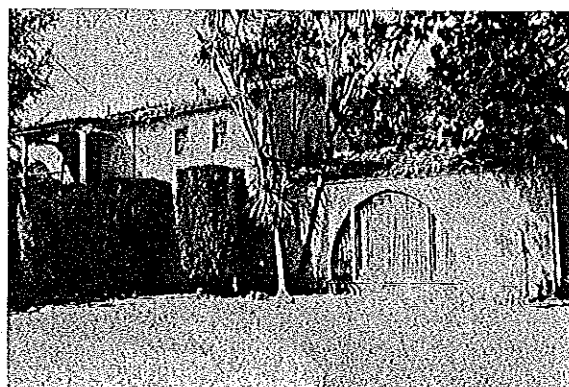
434 Market Street
Vernacular
1905

A rare example of tourist camp cottages accompanying a main house. This type of tourist cottage is representative of a form of housing for the tourism industry in Santa Cruz after the turn of the century.



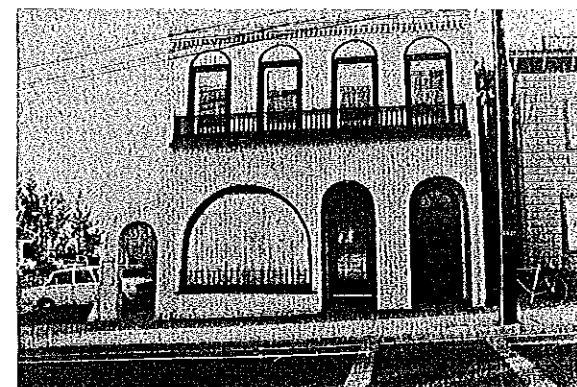
425 Meder Street
Temple Beth El Home of Peace Cemetery
1877

According to *The Sidewalk Companion to Santa Cruz History*, the cemetery was founded upon the establishment of the Hebrew Benevolent Society of Santa Cruz in 1877. Moses Meder, a Santa Cruz county resident prior to statehood, donated the land for the cemetery and is buried there.



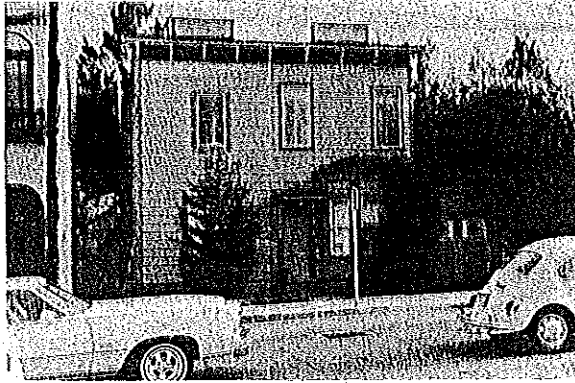
127 Minnie Street
Spanish Colonial Revival
1925-30

A handsome two story residence displaying the plain whitewashed walls, red clay roof tiles, and overhanging balcony of the popular 1920s revival style.



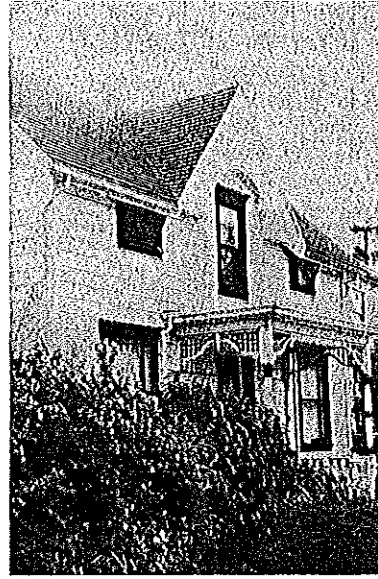
155-157 Mission Street
Original style not known
1860

One of the earliest brick buildings in Santa Cruz (now much remodelled), it was constructed for James Leslie and housed a general store. It was remodelled in 1886 when Frank Alzina operated it as a fish, meat, and vegetable market on the first floor and resided upstairs with his wife (Chase, *The Sidewalk Companion to Architecture*, 1979).



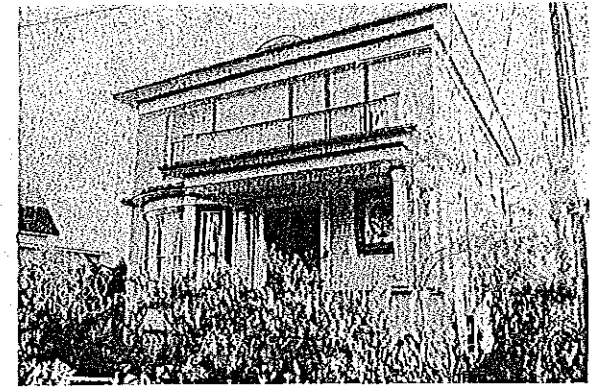
159 Mission Street
Italianate Influence
1870-80

This early structure presents a somewhat odd appearance which may result from being the product of two earlier residences placed alongside each other. A slanted bay window and simple entry porch distinguish the facade.



309 Mission Street
Vernacular
1865-75

The centered gable is reminiscent of the Gothic Revival style. Spindles and turned porch posts decorate the flat roofed Eastlake style entry porch.



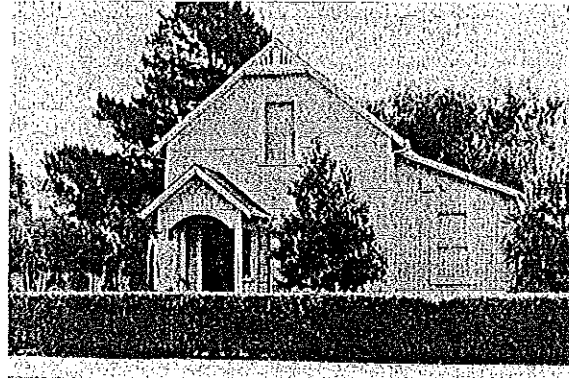
315 Mission Street
Colonial Revival
1900-05

Sporting an eyebrow dormer and a porch supported with classical columns with a balustrade above, this residence is an excellent example of its style.



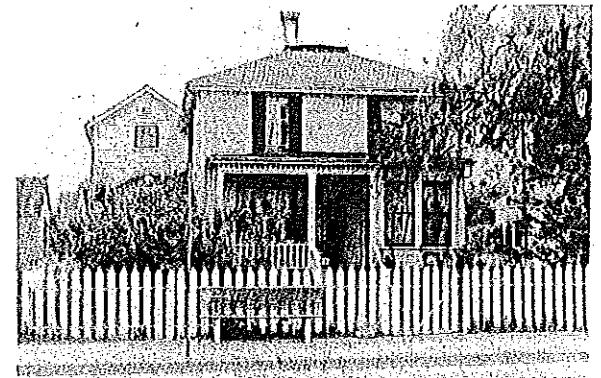
331 Mission Street
Colonial Revival
1905-10

A large residence, symmetrical on the facade with matching bay windows and a recessed entry porch in between. Classical columns support the porch; there is a large hip roofed dormer above.



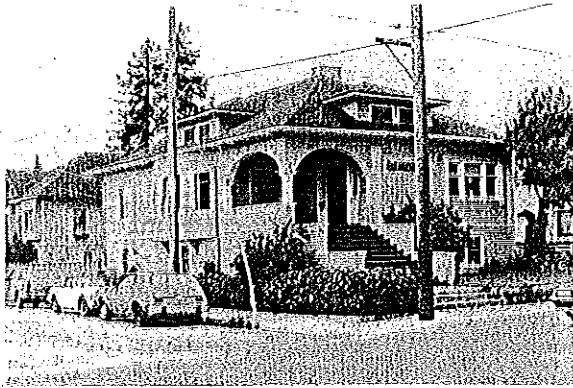
611 Mission Street
Vernacular
1885

This gable roofed residence with a shed addition is embellished with fish scale shingles and a decorative truss ornament. There is a simple elegance in the volumes of the house.



717 Mission Street
Italianate Influence
1865-80

In spite of an odd addition to the rear, the house retains its original volume. The corbelled chimney is original. Roof cresting at one time decorated the apex of the roof.



1020 Mission Street
Colonial Revival
1900-05

A Colonial Revival rowhouse with an interesting corner porch and entry. The wide arches spring from thick columns to frame the porch in a very pleasing manner.



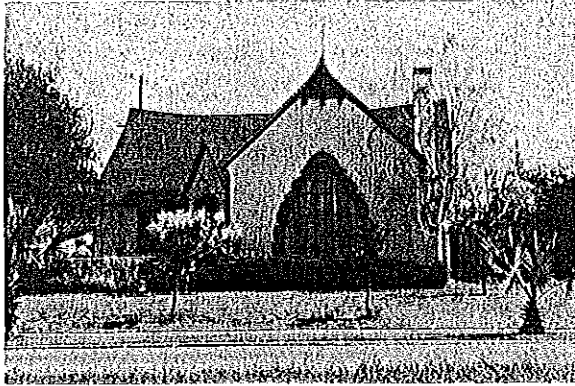
1804 Mission Street
Colonial Revival
1900

A "Classic Box" with a symmetrical facade except for the porch to one side. The use of pilasters at the corners of the building and again at the corners of the dormer is a pleasing detail.



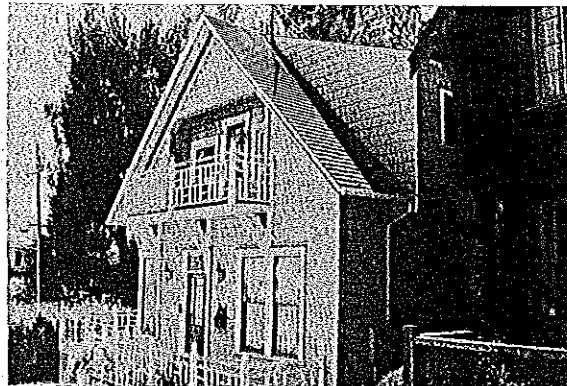
219 Morrissey Boulevard
Craftsman
1910

A generous front porch supported by oversized columns lends grandeur to this comfortable dwelling. Knee braces, characteristic of the the Craftsman style, support the roof.



230 Morrissey Boulevard
Period Revival
1920-30

A style of residence influenced by the memory of quaint cottages seen in France or England during World War I. The sweeping upward of the roof at the gable ends is to suggest a thick, thatched roof. This well-detailed residential style could be called Normandy Revival.



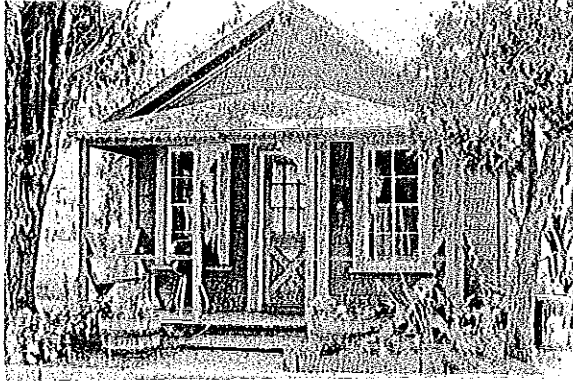
101 Mott Avenue
Vernacular
1886

Built for Sara Tyrell, this is one of the early Seabright houses. Mina Cole Unsworth, one of the founders of the Seabright Cultural League, was the next owner and lived here for many years. The porches with Chinese railings are very striking.



311 Mott Avenue
Vernacular
1880-90

According to Margaret Koch's *Santa Cruz County Parade of the Past*, this early Seabright farmhouse was built by Jim Estelle on a farm that extended all the way from Seabright Avenue to the ravine.



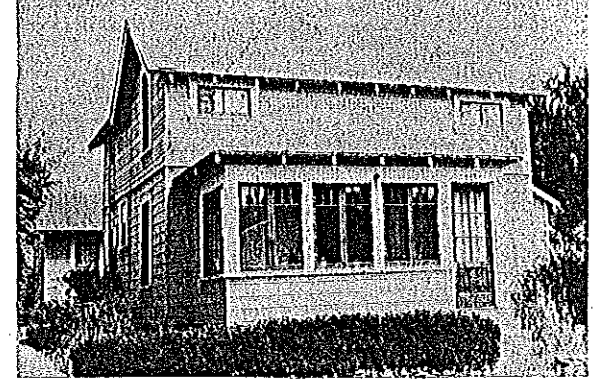
403 Mott Avenue
Vernacular
1885-1900

A cottage in the early Seabright development. In 1884 the *Sentinel* newspaper called Seabright "a most attractive little settlement composed chiefly of San Jose people of the very best class."



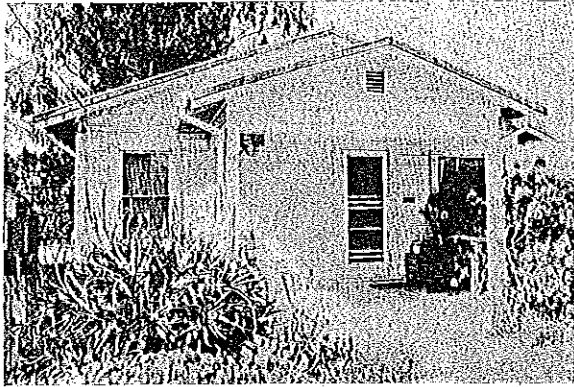
415 Mott Avenue
Vernacular
1885-1900

Taken as a group, this fairly intact block of simple vacation cottages retains the flavor of early Seabright. This cottage, in need of rehabilitation, is sided with shingles.



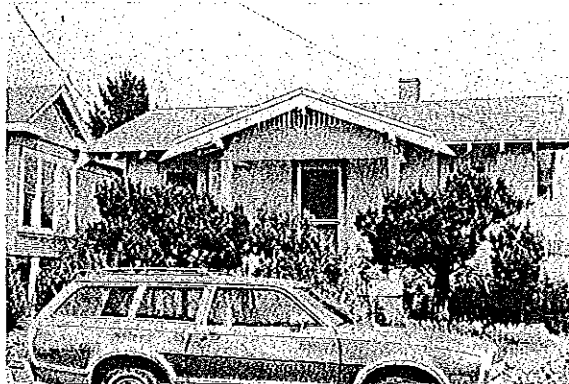
416 Mott Avenue
Vernacular
1885-1900

An early two story farmhouse with original siding. The front porch appears to have been remodelled with 1920s style windows.



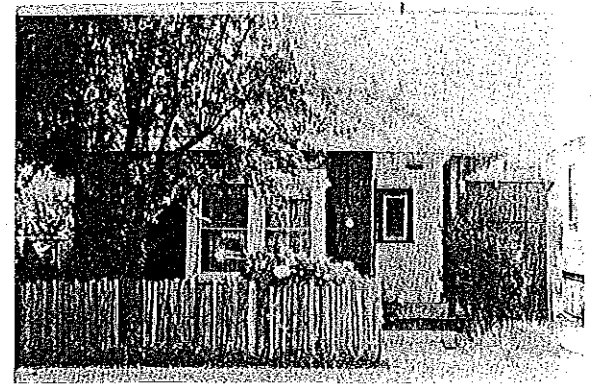
419 Mott Avenue
Vernacular
1920s

A one story bungalow which is compatible with the original scale and character of the early Seabright development.



420 Mott Avenue
Vernacular
1920s

A bungalow with a pleasing low-pitched porch supported by sturdy columns. This small house is a builder's distillation of the more elaborate Craftsman style.



423 Mott Avenue
Vernacular
1885-1900

A contributing structure to a row of simple, early vacation cottages. This cottage has a hip roof, a bay window, and is shingled.



424 Mott Avenue
Colonial Revival
1895-1915

A pleasing rowhouse on a raised foundation. The front entry porch is recessed under a large gabled roof. The residence is clad in narrow clapboard and the windows are trimmed with simple board trim.



112 Myrtle Street
Queen Anne Influence
1895

This Queen Anne cottage displays a cut-away bay window underneath a large gable. The residence is adorned with turned wood trim at the bay window and a graceful corbelled chimney.



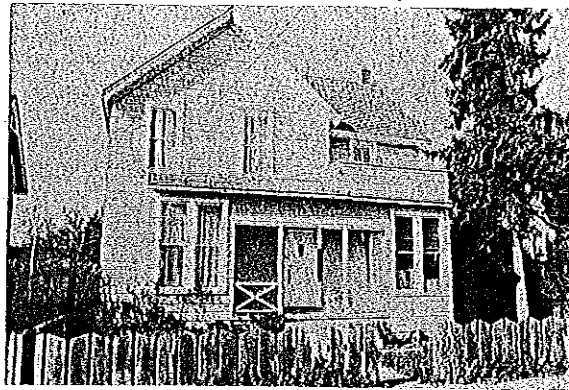
121 Myrtle Street
Eastlake
1890

An Eastlake style residence with an unusual shed roofed wing. The house retains its basic volumes in spite of alterations.



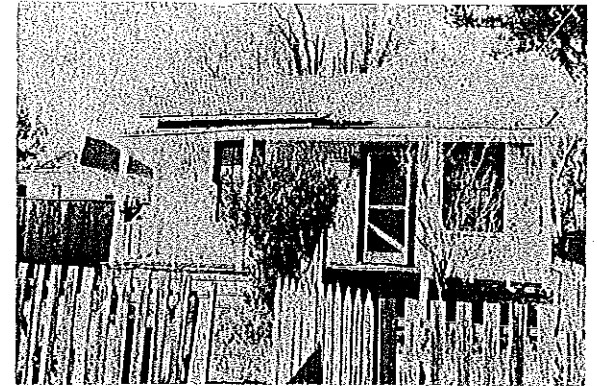
125 Myrtle Street
Vernacular
1890

A residence with Eastlake style influence. A fretwork of spindles decorates the front porch.



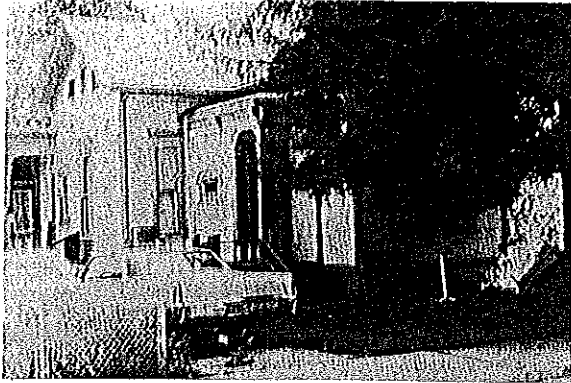
129 Myrtle Street
Vernacular
1870

A fine farmhouse despite additions to the facade. The pedimented window trim at the front upper windows indicates the appearance of the original windows.



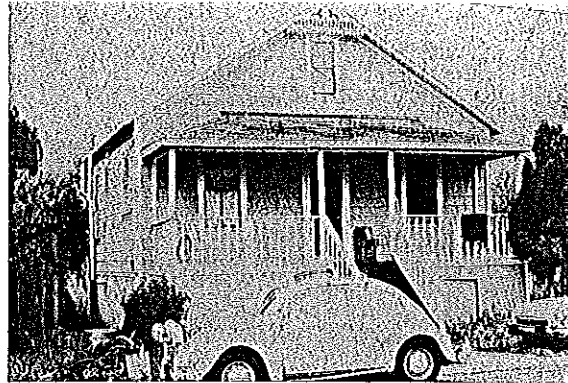
211 Myrtle Street
Vernacular
1865-75

An early residence whose 6/6 windows, siding, and band of trim at the cornice line suggest Greek Revival style influence. The house is in need of rehabilitation.



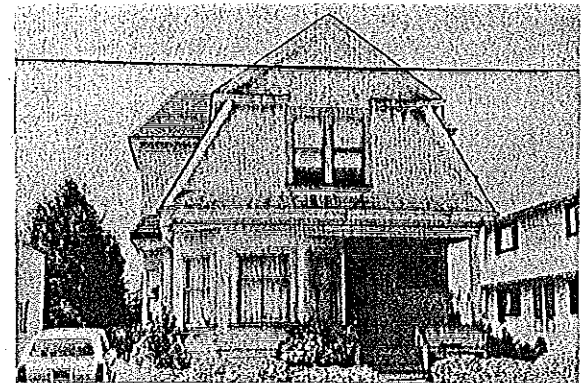
340 Myrtle Street
Italianate
1885

This residence contains much of its original decorative wood trim detailing at the entry porch and side windows. A rear wing is interesting with its own door and entry porch which repeats the detailing of the front porch.



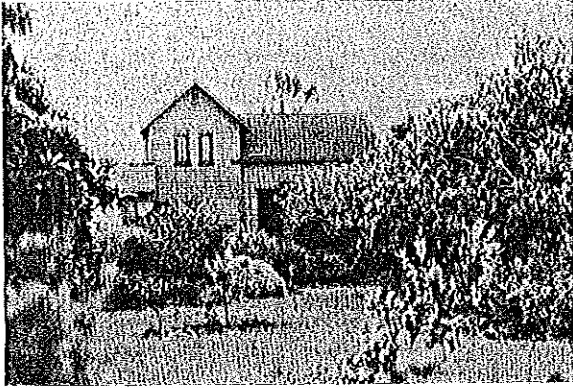
110 Neary Street
Vernacular
1885

An attractive cottage with "folk" Victorian details at the gable ornament and upper window. The residence is built on a raised foundation and has a full front porch.



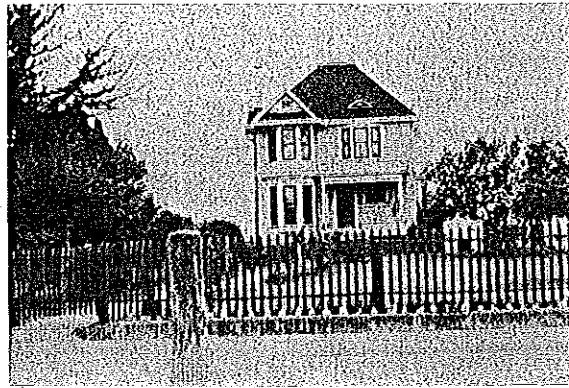
325 Ocean Street
Shingle
1900

A gigantic gable covered by a sweeping roof creates a dramatic facade on this residence. The large gable end is pierced by a pair of double hung windows and is dressed up with decorative shingles.



221 Oceanview Avenue
Vernacular
1880s

One of the residences contributing to the impressive collection of late 19th century houses remaining today on a street which opened to development in 1871. This residence is a simple Stick-influenced two story structure on the L-plan. As is true of many of the Oceanview residences, the property is enhanced by the amount of open space around the house, approximating its original setting.



303 Oceanview Avenue
Queen Anne/Colonial Revival
1890-1900

A dignified residence with a two story bay window topped with its own small gable. An additional bay window at the second story balances out the facade in a pleasing manner. The entry porch is of the Colonial Revival type with columns and a balustrade above.



317 Oceanview Avenue
Stick-Eastlake
1891, LeBaron R. Olive

Constructed for A. M. Johnson, this residence was originally a twin to 250 Oceanview Avenue. The house exhibits the vertical design and exuberant surface embellishment typical of the style. A side and back deck are sensitive additions. Residences on this side of the street have spectacular ocean views.



324 Oceanview Avenue
Queen Anne
1890s

A raised basement Queen Anne cottage which appears to have been designed as a duplex in its original form or soon after construction. The interplay of roof angles, bay windows, and graceful porches creates a very pleasing composition.



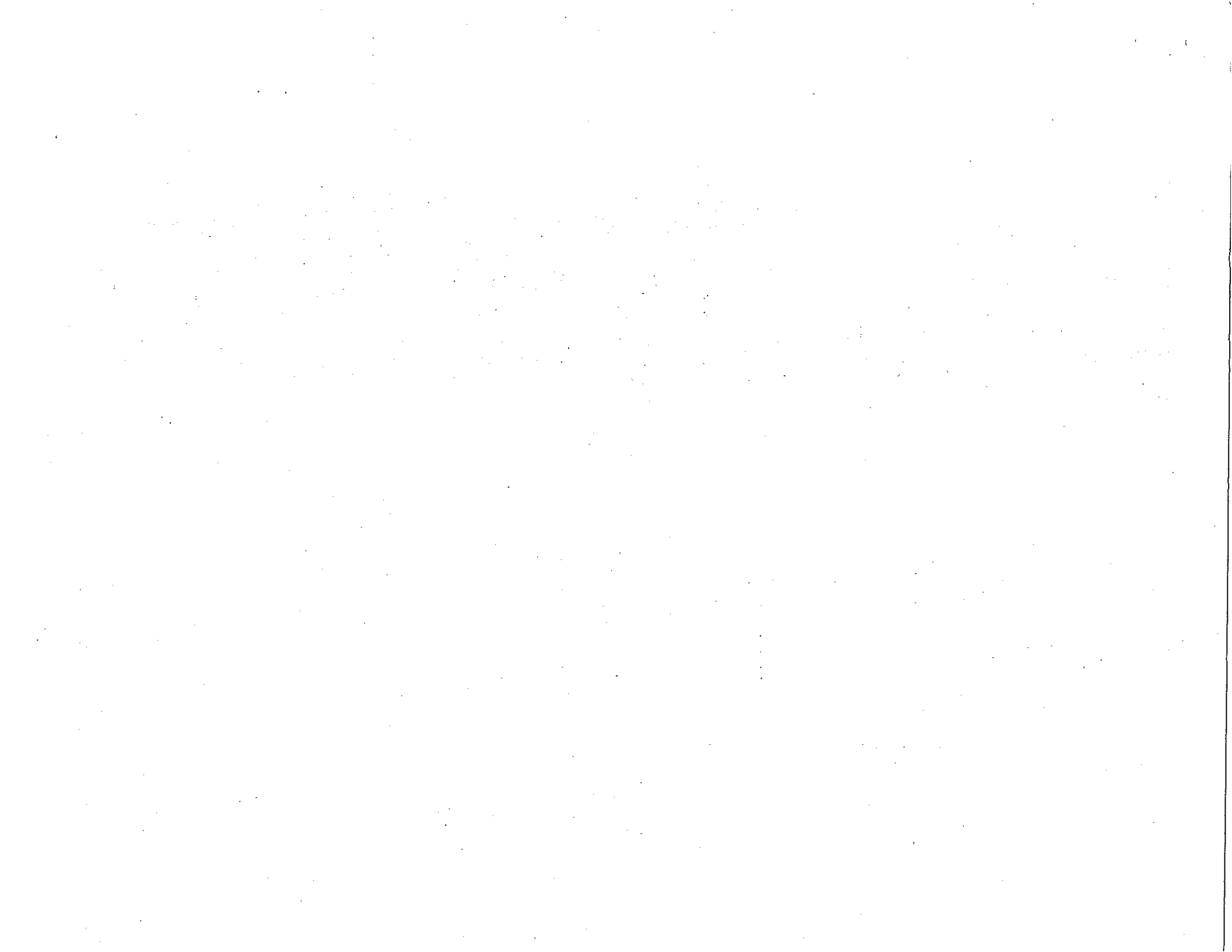
411 Oceanview Avenue
Vernacular
1895

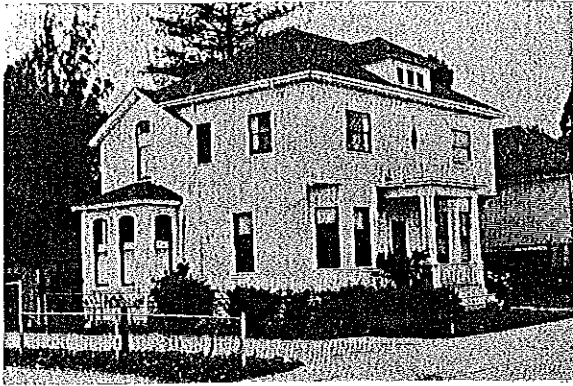
This small residence is basically a Queen Anne cottage without many decorative elements. The large front gable, cutaway bay and turned porch posts are characteristic of its style. The deep setback from the street and large yard enhance the appearance of the simple residence.



415 Oceanview Avenue
Craftsman
1910-20

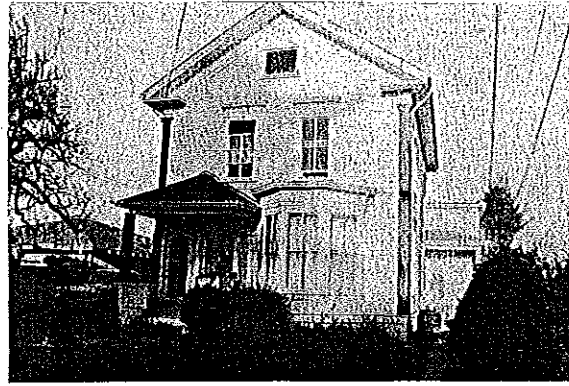
A handsome Craftsman residence distinguished by elaborately carved knee braces at the eaves. A gable roof over the porch is harmoniously repeated at the dormer on the facade.





513 Oceanview Avenue
Italianate with Colonial Revival addition
1870; Remodelled ca. 1905

An interesting combination of two architectural styles joined together. The rear portion of the residence is in the Italianate style with tall, narrow, arched top windows and a straight-sided bay window. The rest of the structure is a later addition which more than doubles the size of the house. The addition has the balustraded entry porch with classical columns of the Colonial Revival period.



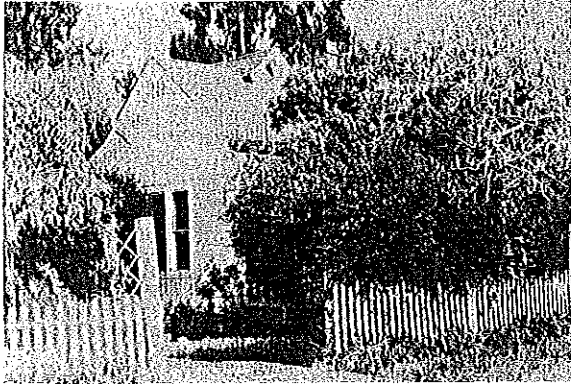
524 Oceanview Avenue
Greek Revival and Italianate Influence
1870s

The facade of this residence displays returned eaves, pilasters at the building corners, and a slanted bay window. The house retains its original 2/2 windows with prominent crowns. Flat roofed one story wings at the rear appear to be original to the building.



537 Oceanview Avenue
Vernacular
1870s

This residence was originally located on Soquel Avenue and later moved to this site. It was built for Richard Harrison Hall, an Easterner who settled in Santa Cruz after returning from the gold fields. Although the house is oriented differently and no longer retains its elaborate porch, the basic volume of the house remains intact.



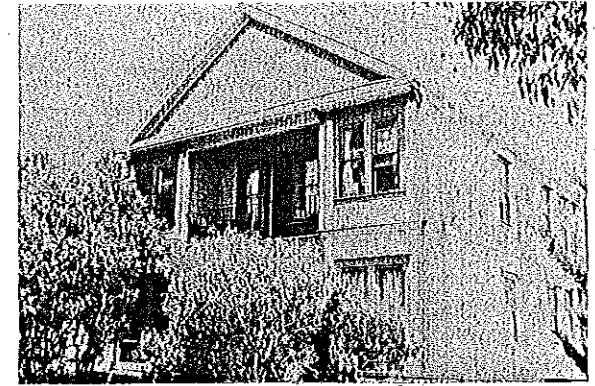
228 Owen Street
Stick-Eastlake Cottage
1885

An excellent example of the Stick-Eastlake Cottage. This small house appears to be largely unaltered. Prominent Y-brackets are present at the porch supports and gable ornaments are intact.



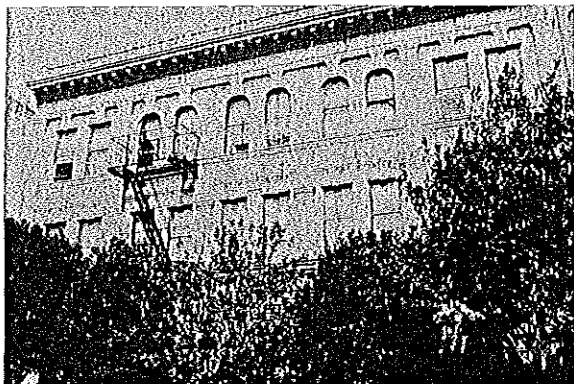
206 Pacheco Avenue
Moderne
1930-40

A residence which exhibits the influences of the Art Moderne and International style movements. The roof is flat and the facade is asymmetrical with a projecting circular bay. Windows are metal casement and set flush with the outer walls. Walls are unadorned except for a window of glass bricks at the entry.



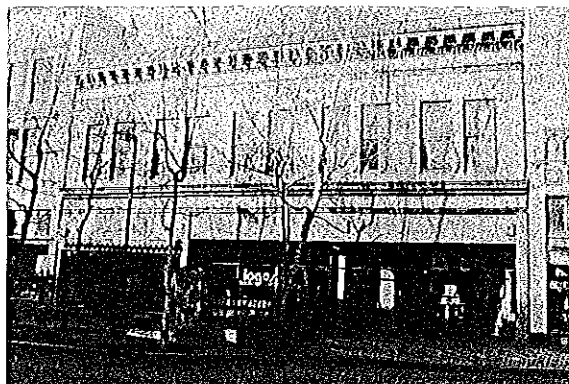
610 Pacific Avenue
Vernacular
1890s

This two story early apartment building is symmetrical with a central entry and apartments on both sides, upper and lower levels. The structure's only adornment is at the gable end which has patterned wooden shingles and a cornice moulding. Multiple family housing units of this type are rare in Santa Cruz.



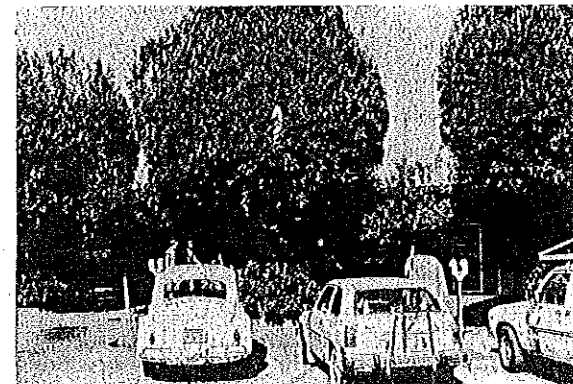
1118 Pacific Avenue
Heard Building
Italian Renaissance
1906

A handsome commercial building which housed one of the last of the small movie theaters that operated in Santa Cruz. The Cameo was a 350 seat theater which opened in 1925 and closed five or six years later (Chase, *The Sidewalk Companion to Santa Cruz Architecture*, 1979).



1119 Pacific Avenue
Beaux Arts influence
1905-15

A rusticated second story facade in the Beaux Arts tradition distinguishes this commercial building. A parapet with a dentil course cornice and elaborate mouldings embellishes the facade.



1132 Pacific Avenue
Bank of America Annex
Moderne
1935, H. A. Minton

Very likely designed by the Bank of America architect who designed the original bank building, the Annex is a one story flat roofed addition to the bank. Deftly repeating themes from the earlier building facade such as the ribbed pilasters, the Annex harmoniously expands the bank building.



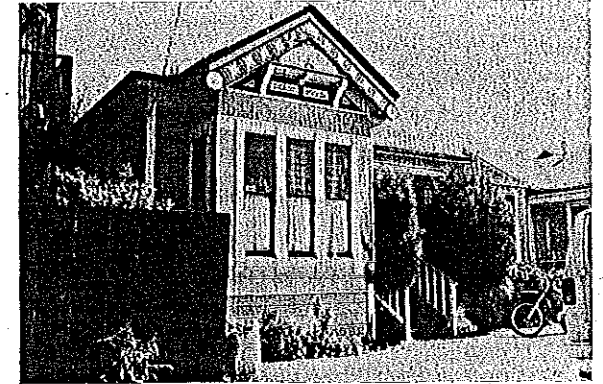
1521 Pacific Avenue
Hihn-DeLamater Building
Commercial Italianate
1868-69

A two-story commercial building with a bracketed cornice and dentils. Two semi-circular projections remain on the original roofline parapet. A shingled canopy at street level is a later addition.



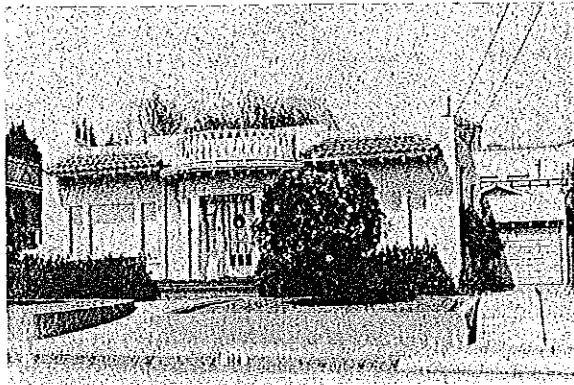
1545 Pacific Avenue
Compass Rose Building
Italianate
1866; Remodelled 1977

This building was constructed in 1866 for Arthur Baldwin, a member of the J. C. Fremont expedition. The second floor, a large open hall, was originally planned to be used as part of the hotel that was next door at the time. The original facade was unfortunately obliterated by modernization, but a new facade was reconstructed in 1977 in the "spirit" of the original (Chase, *The Santa Cruz Companion to Santa Cruz Architecture*, 1979).



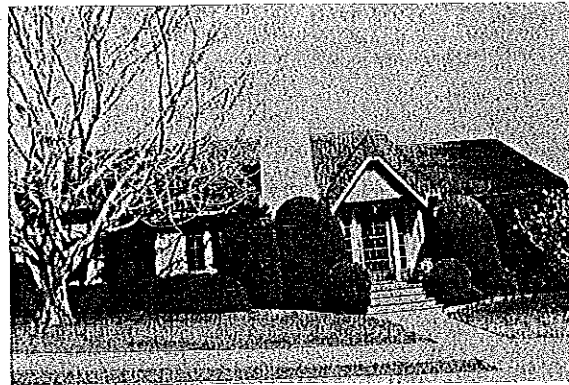
206 Pearl Street
Stick-Eastlake
1885

The facade of this cottage is embellished with vertical and horizontal banding and a straight sided bay window. The bargeboard at the gable is unusually delightful with circular cutouts terminating the board.



144 Peyton Street
Regency/Mission Revival
1925

A companion piece to 148 Peyton. An interesting blend of Mission Revival tiled window projections and the formal balustraded entry porch of the Regency style.



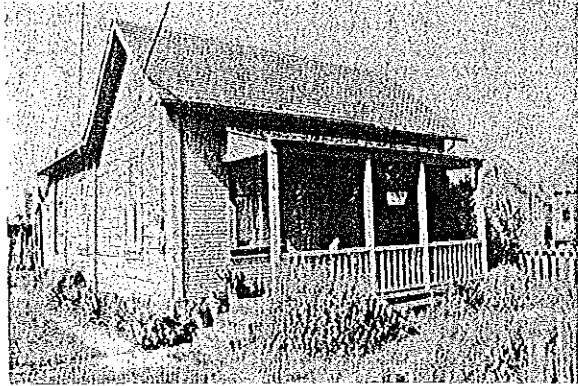
248 Peyton Street
Tudor
1925

A good example of the Tudor cottage. A prominent chimney and half-timbered front gable are popular attributes of the style. Roofing which is rolled around the eaves is intended to suggest picturesque thatched roofs of rural England.



724 Pine Street
Vernacular
1880s-90s

An early cottage which retains its architectural integrity. The pyramidal roof shelters the full front porch; original 2/2 windows and channel rustic siding remain.



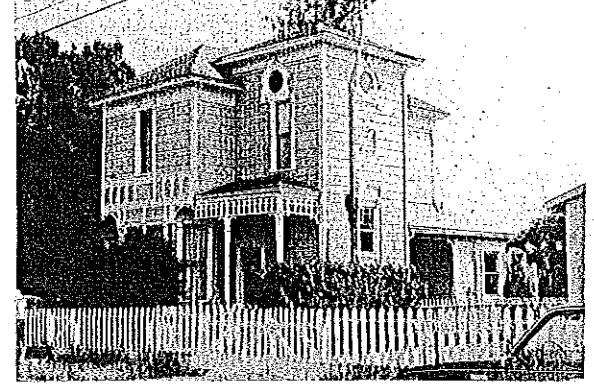
737 Pine Street
Vernacular
1870s-80s

A simple residence representative of the type built by many early settlers. The side gabled residence with a full porch is one of the basic Early American house forms. As is true with this one, almost all have additions to the rear.



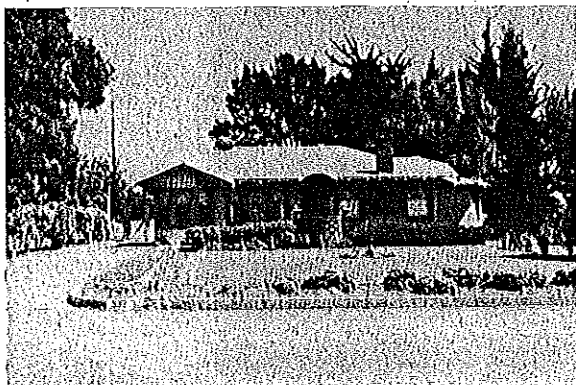
824 Pine Street
Queen Anne Cottage
1895

The front gable end is embellished with all the usual Queen Anne devices: decorative shingles, siding, applied wooden bands, gable pendant. There are turned wooden spindles at the cutaway bay windows. It appears that the once open porch has been enclosed with screen.



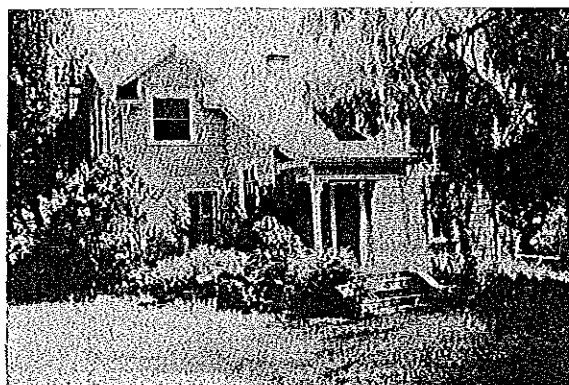
118 Plum Street
Italianate/Stick-Eastlake
1885

A handsome two story residence with an appealing corner porch and entry. The flat topped entry porch and hipped roof are Italianate features. A wing which exceeds the main roof in height appears to be an addition.



332 Plymouth Street
Craftsman
1915

A low pitched hipped roof creates an unusually horizontal appearance to this one story residence. A distinguishing feature is the entry which is identified by an "eyebrow" in the roof shingles. An original garage adds to the authenticity of the site.



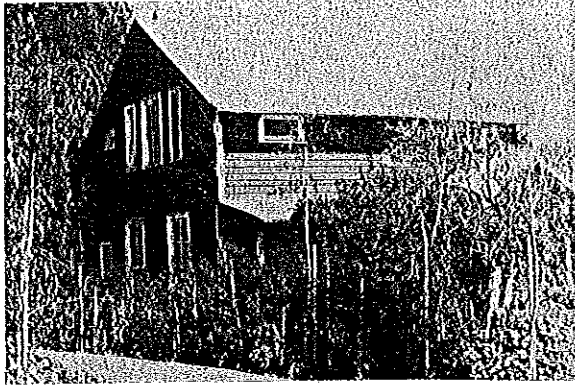
342 Plymouth Street
Vernacular
1870s-80s

A slanted bay window and flat topped entry porch suggest Italianate influence. Multiple gables may be later additions. The rambling residence retains many of its original style windows.



118 Post Street
Vernacular
1880

A simple residence on the L-plan. The original volume of the house and its 2/2 windows are intact.



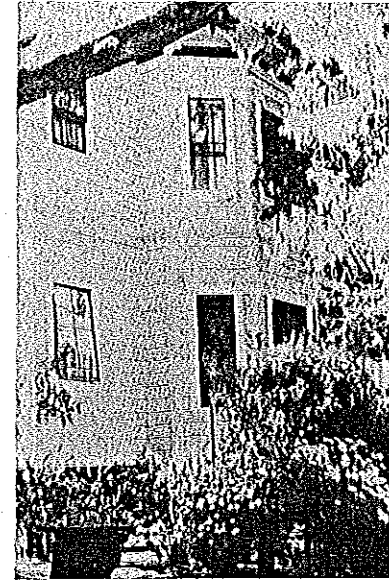
217 Potrero Street
Vernacular
1850-65

An interesting New England style salt-box with a corrugated metal roof. Despite numerous window alterations and a small, gable roofed addition to the front, the residence is clearly a mid-19th century building.



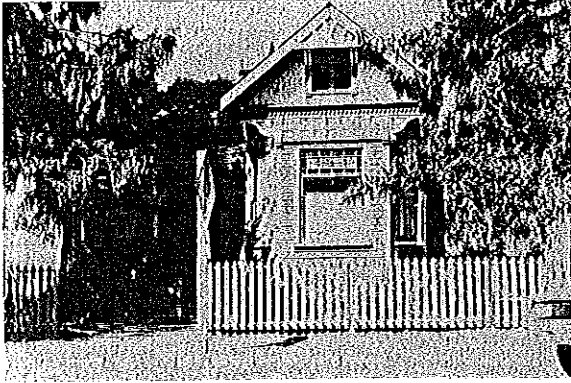
130 Rathburn Avenue
The Chisem House
Mission Revival
1910, William Bray

A beautifully detailed two story residence, this was the home of Pedro Chisem, a wealthy developer of Mexican heritage. Chisem, using the same architect, built the Piedmont Court apartments on High Street which were planned to be part of a four-block commercial development. Only the apartments were completed.



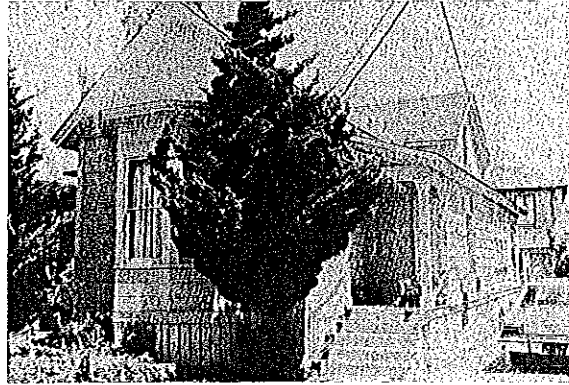
125 Rigg Street
Italianate Influence
1875

This stately two story residence was once located across from the Bayview Race-track on Fair Street where it served as "a sort of a hotel, and at the time of the races it was filled with jockeys, riders, and race track followers" (Ernest Otto).



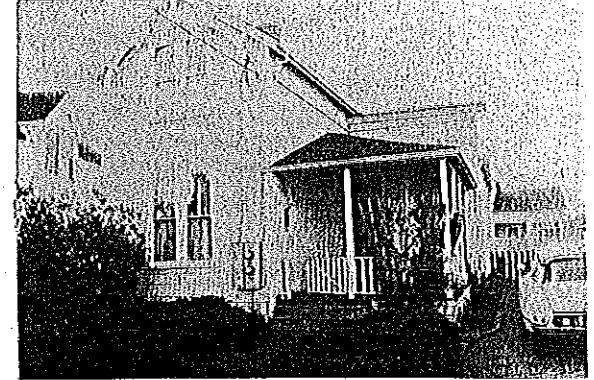
915 River Street
Queen Anne
1915

A classic Queen Anne cottage with a profusion of decoration on the front gable end. A row of dentils, a pierced wood horizontal band, scalloped shingles and a bit of half-timbering as a gable ornament serve to embellish this facade. Flashed glass adds color to the bay window.



812 Riverside Avenue
Stick-Eastlake
1876-80

Located in an early residential area first laid out in 1867, most of the houses on the street date from the years 1876-1877 (Chase, *The Sidewalk Companion to Santa Cruz Architecture*, 1979). This small residence is an example of a working person's cottage decorated with a bay window and a side entry porch.



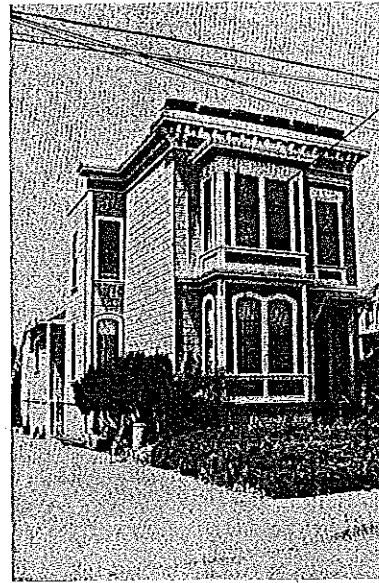
823 Riverside Avenue
Vernacular
1876-80

A two story residence with an unusual flat roofed side wing with a porch. An oversized gable ornament shows the influence of the Stick-Eastlake style.



828 Riverside Avenue
Italianate
1876-80

A handsome two story residence with returned eaves, a flat roofed slanted bay window, and original 2/2 windows. The side wing appears to be an early addition.



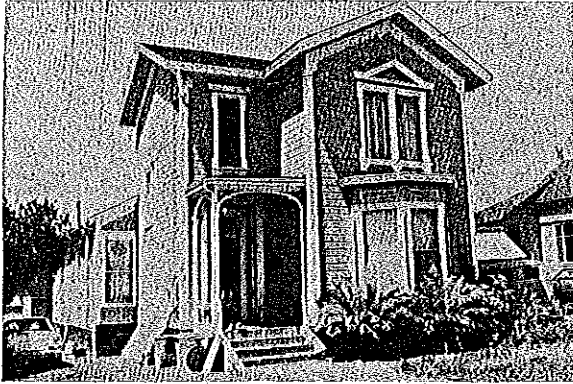
831 Riverside Avenue
Italianate
1876-80

This dignified two story residence displays the slightly arched windows of the Italianate style on the first story and a straight sided bay window which extends two full stories. A bracketed cornice extends across the facade.



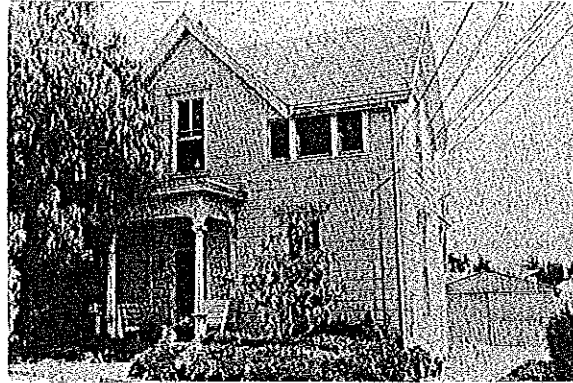
835 Riverside Avenue
Italianate Influence
1876-80

Another of the original Riverside Avenue residences which contributes to the late 19th century ambience of the street. This residence retains its original bay window and 2/2 windows and is largely unaltered.



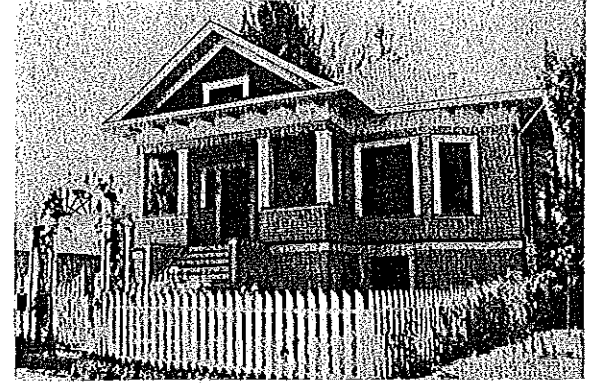
839 Riverside Avenue
Italianate Influence
1876-80

A pediment over the second story window and pilasters at the house corners are pleasing details in this residence. The segmental arch over the front porch is particularly graceful.



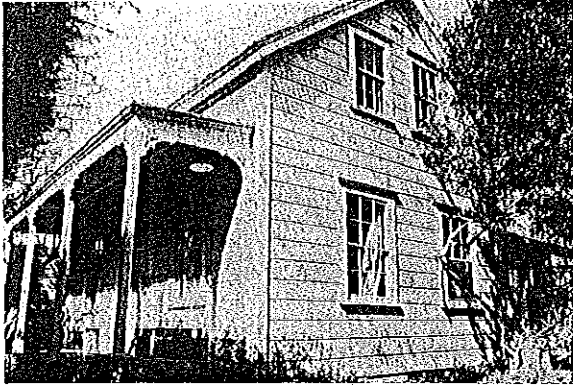
844 Riverside Avenue
Vernacular
1876-80

Another of the residences of the original early development. The flat roofed portico with fancy porch supports gives dimension to an otherwise flat facade.



203 Roberts Street
Colonial Revival
1900-10

An unusually forceful porch stands out in the design of this raised basement cottage. Exposed rafters at the cornice line are a Craftsman touch.



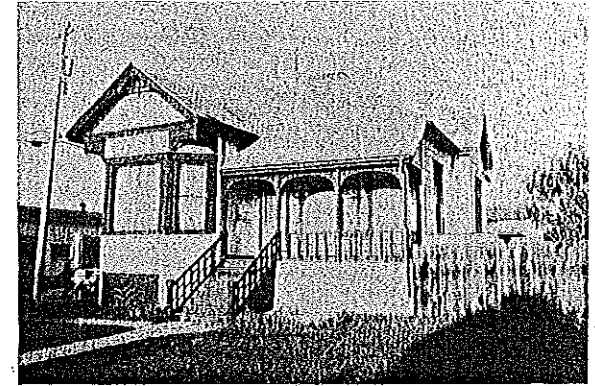
126 Santa Cruz Street
Vernacular
1865-75

6/6 windows and channel rustic siding attest to the early construction date of this residence. Delicate wooden spindles serve as brackets on the full front porch.



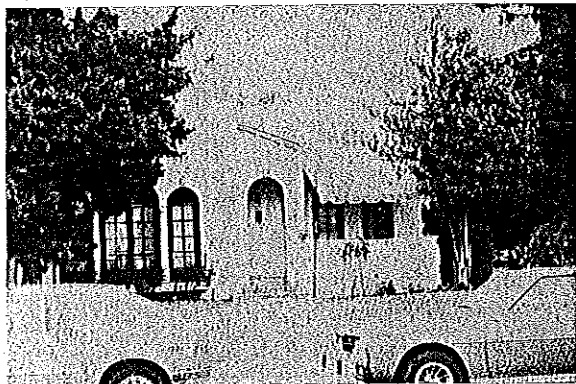
129 School Lane
Vernacular
1865-75

This small vernacular house retains its original siding and decorative brackets at the porch supports. It is likely that the original configuration of this house had a shed roofed front porch all the way across the front before the front projecting wing was added.



1532 Seabright Avenue
Queen Anne
1895

A delightful Queen Anne cottage with most of its original embellishments intact. The Chinese railing at the porch and stairs is a popular motif of the period.



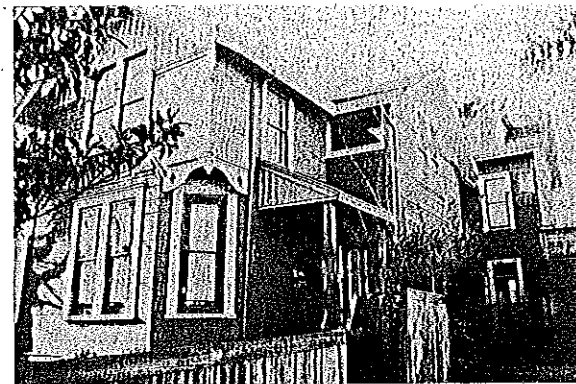
1722 Seabright Avenue
Spanish Colonial Revival
1920-30

A well preserved example of the popular revival style of the 1920s. The arched colonnaded windows with flower boxes at the base are particularly pleasing.



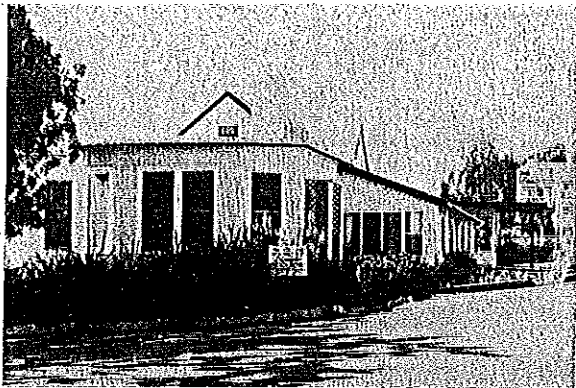
913 Seaside Street
Vernacular
1890

Both Stick style and Eastlake style decoration is applied to this simple gable roofed residence. The entry is sheltered under a corner of the roof and the porch and stairs are Chinese-railed.



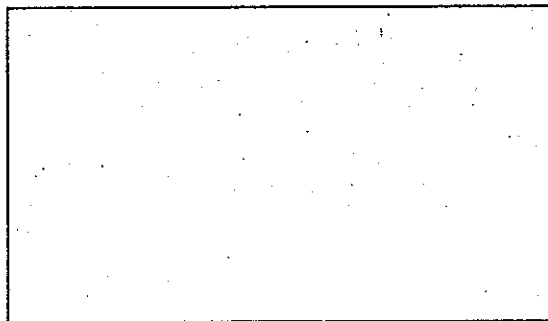
512 Second Street
Stick-Eastlake
1870-90

This well-maintained large residence has its original applied wooden decoration and turned porch posts. It is unusual to find original flashed glass intact in the windows. Despite many additions to the rear, the historical integrity of the house has been retained.



525 Second Street
Edgewater Beach Hotel
Vernacular
1865-75

Surrounded by later additions is an early frame structure with steep-pitched gables. There is a strong possibility that this house is a remaining link to the Seaside Home, one of the first tourist resorts on Beach Hill, which operated as early as 1865.



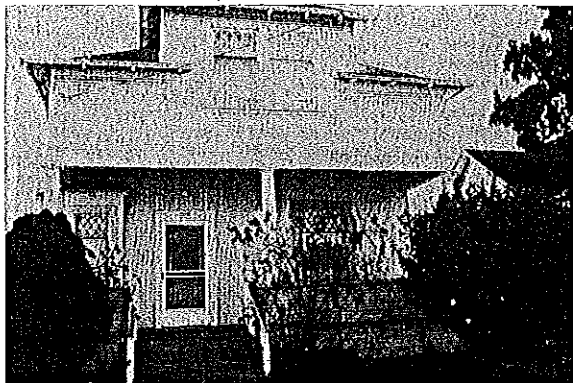
532 Soquel Avenue
Commercial Offices
Moderne
1939

A well designed commercial building by Hamilton and Church which exemplifies the horizontal quality of the new (to the 1930s) industrial style. A low wall with rounded corners at the entry and wrap-around metal sash windows are characteristic of Moderne style.



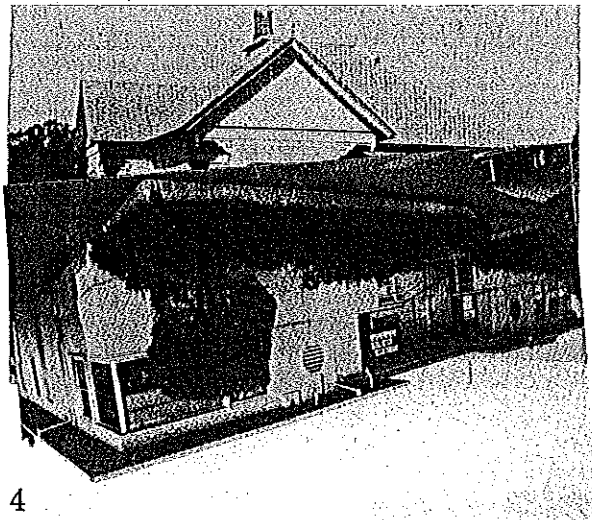
312 Spruce Street
Vernacular
1865-75

An L-plan cottage of charming scale. It is little altered, retaining the slanted bay and 2/2 windows of the original style.



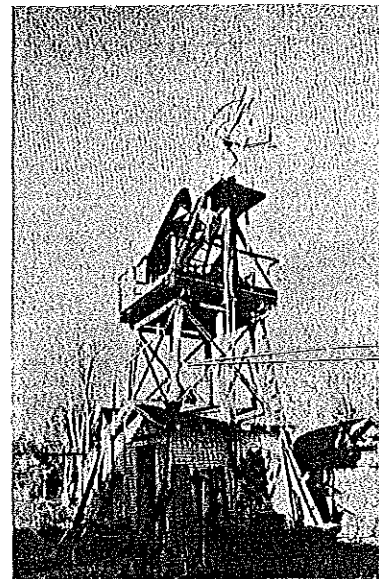
325 Spruce Street
Colonial Revival
1900-10

A prominent windowed dormer at the second story projects outward to cover a porch and entry. Narrow clapboard covers the house and wide, flat trim frames its windows.



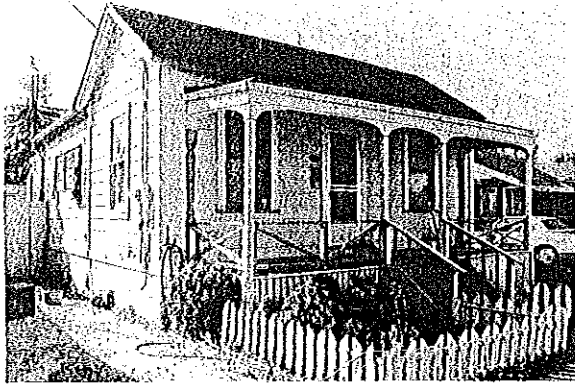
4
C
1895

A delightful Queen Anne cottage with cutaway bays at both the front and side. The hipped roof was most likely topped with decorative roof cresting at one time.



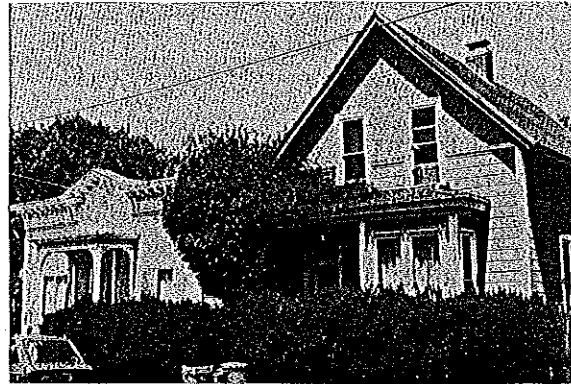
604 Sumner Street
Colonial Revival
1900-20

This designation includes the windmill and tank house behind the residence. Fast disappearing in Santa Cruz, windmills and storage tanks were once common sights in an area that was at one time "out in the country" beyond the city's water system. The residence has the recessed porch with classical porch supports which is typical of the style.



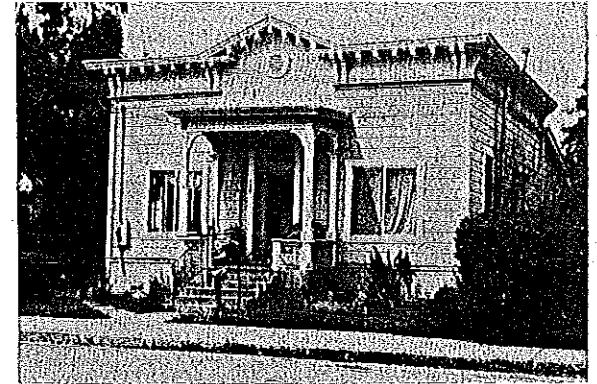
109 Taylor Street
Vernacular
1870-80

This small house is representative of the side gabled structure with shed addition to the rear. The early type wide siding attests to its 19th century construction and the full front porch shows the influence of the Eastlake style.



114 Taylor Street
Vernacular
1880-90

The simple facade of this residence is embellished with horizontal siding below and scalloped shingles above. A porch roof covers the straight sided bay window as well as the porch.



116 Taylor Street
Italianate
1870-80

A jewel of an Italianate residence with a bracketed cornice, a bulls-eye which ventilates the framing, and a flat-topped entry portico. The outline of the original tall windows can be seen in the siding at the facade.



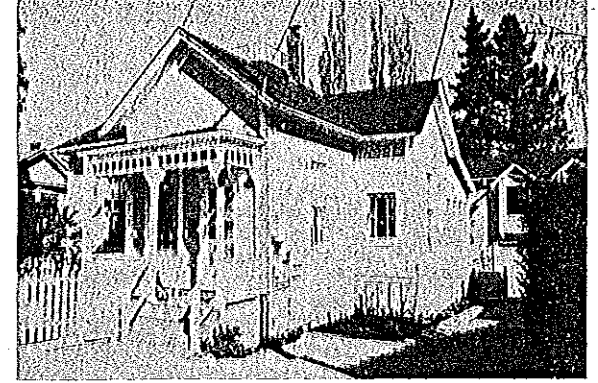
239 Third Avenue
Craftsman
1910

A charming house with board and batten siding, stained to retain its natural wood color. The arch of the round topped window at the front is repeated in the arched entry gate. A courtyard effect is created between the fence at the street and garages at the rear.



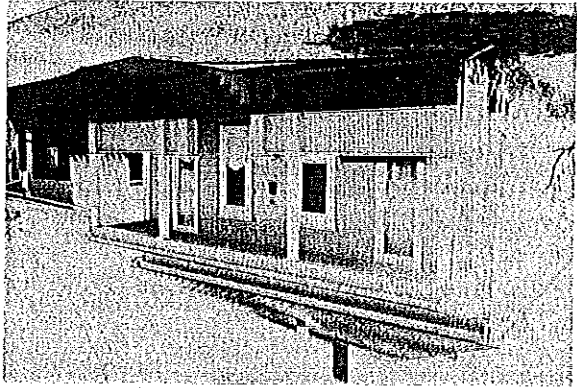
919 Third Street
Eben Bennett House
1871

The home of Eben Bennett, operator of lime kilns and builder of the first road — originally a toll road — between Felton and Santa Cruz. This residence was originally built in the Italianate style, but was remodelled after the turn of the century in the Craftsman style.



129 Towne Terrace
Vernacular
1870–80

This is a nicely scaled simple house of the mid-19th century. Channel rustic siding and 6/6 windows suggest an 1860s construction date, while the Eastlake style porch with spindled screen is of a slightly later period.



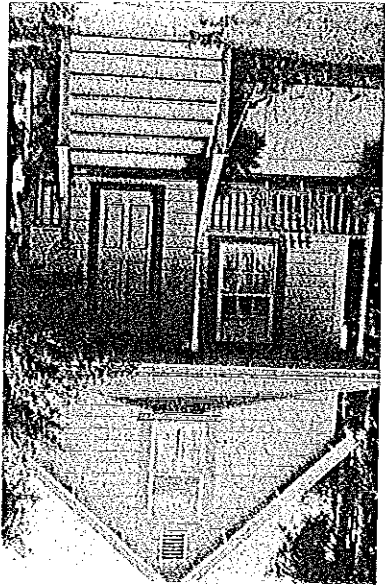
205 Trescony Street
Vernacular
1880-1900

This residence is significant in that it appears to have been built as a "double house," examples of which are rare in Santa Cruz. It is symmetrical with a door and a window on either side and a full front porch.



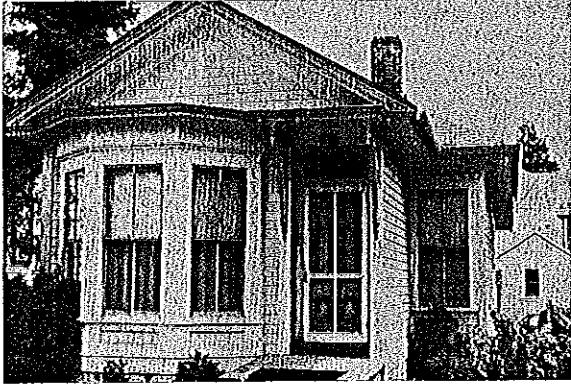
127 Trevelhan Avenue
Queen Anne
1885

A Queen Anne cottage with multiple roof lines, turned porch posts, and original Chinese railing at the porch and steps. A nicely detailed side porch enhances the residence.



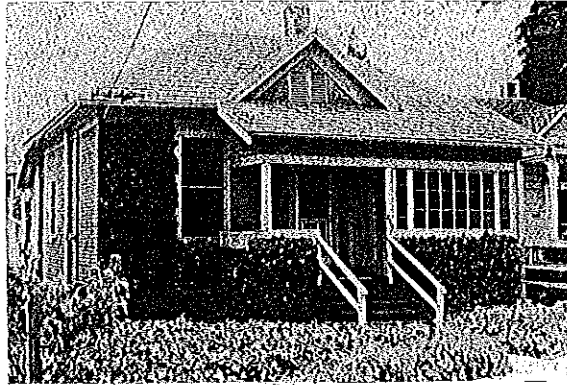
233 Union
Vernacular
1870-85

A small house which retains its hip roofed porch and pleasing proportions. The residence has a front facing gable and a raised main floor.



235 Union
Vernacular
1870-85

One of three cottages built by F. A. Hihn on the site of a former neighborhood baseball field. A slanted bay window and a bracketed canopy over the entry adds interest to the front facade.



237 Union
Vernacular
1870-85

A hip roofed cottage of the group constructed by F. A. Hihn with a gabled dormer. The porch has been remodelled with a section closed in for added living space.



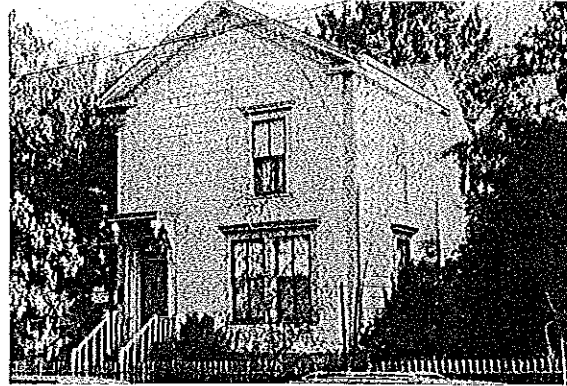
239 Union
Vernacular
1870-85

Another of the F. A. Hihn cottages. This one retains its flat topped entry porch with brackets at the posts and its original 2/2 windows.



321 Union
Vernacular
1870-85

A charming cottage of unknown vintage with board and batten siding. The simple facade is enhanced only by a bracketed canopy over the front steps and shuttered windows crowned with moulding.



327 Union
Italianate Influence
1870

A two story house which exhibits both Italianate and Greek Revival details, suggesting it was built in the 1870s. The residence has returned eaves and pilasters to accent the corners of the house. There are decorative crowns at the window lintels. A bracketed entrance canopy suggests the Italianate style.



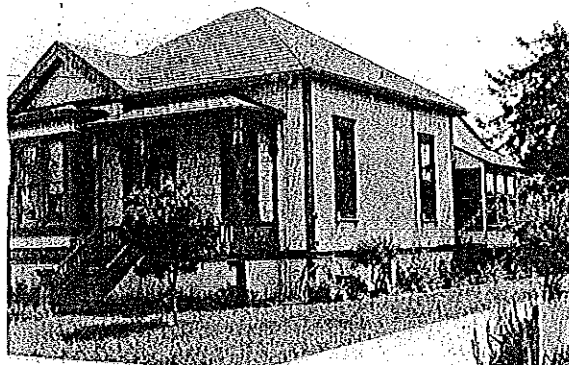
331 Union
Vernacular
1850-65

A house exhibiting the front facing gable and the pedimented gable end of the Greek Revival style. The porch is a later addition.



141 Van Ness
Colonial Revival/Craftsman
1912

A modest gambrel-roofed residence with a full porch constructed for Thomas Burns. It was later the home of Santa Cruz historian Leon Rowland.



219 Van Ness Avenue
Eastlake
1880-85

An Eastlake style cottage dressed up with a bay window and a hip roofed porch. Much of the original porch brackets and decorative spindles remain in place.



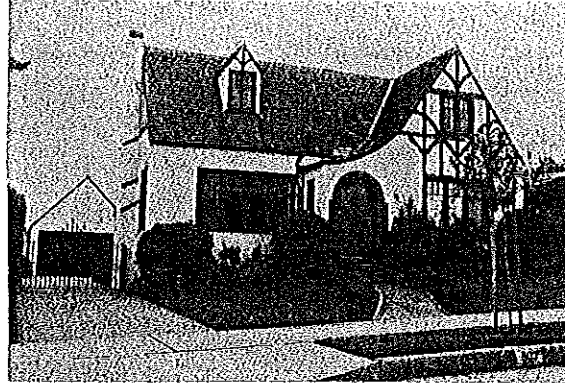
233 Van Ness
Vernacular
1875-80

A full porch across the front facade and a balcony with a balustrade and gabled roof at the second story level distinguishes this imposing residence. The house exhibits Italianate, Stick, and Eastlake style influences.



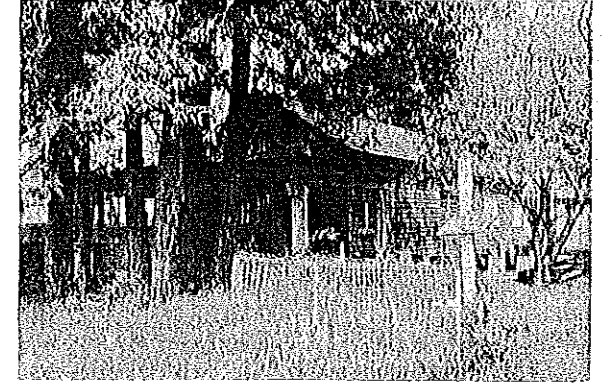
241 Van Ness
Vernacular
1890

A simple two story residence of the farmhouse type. While the house exhibits few of the specific characteristics of the then fashionable styles, this type of residence was constructed in great numbers throughout the country.



503 Van Ness
Tudor
1925

Based on a renewed interest in early English building traditions, this house is a good example of the Tudor style. It features a steep pitched gable roof with decorative half-timbering on the front-facing gable, reminiscent of Medieval infilled timber framing.



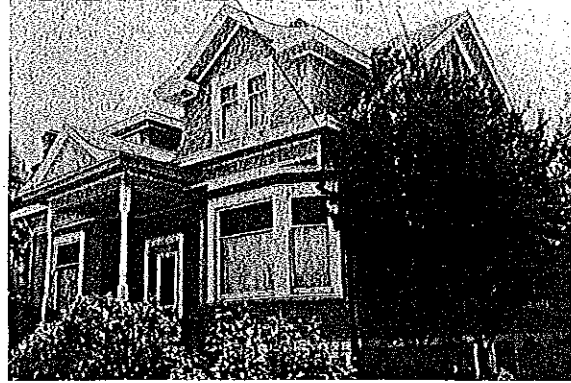
115 Walk Circle
Craftsman
1895

One of the earliest examples of the Craftsman/Bay Tradition influence in the Santa Cruz area. Shingled side walls and a broad front porch with elephantine columns are elements of the Craftsman style.



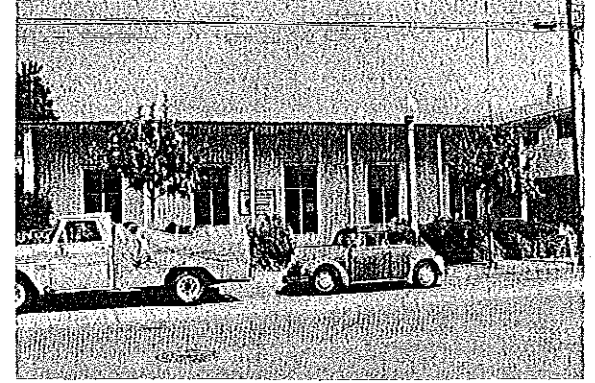
211 Walnut Avenue
Queen Anne
1895

This house has a facade decorated with a variety of siding types and shingles. Spindlework at the porch and decorative bands illustrate the interest in enhancement of surfaces in the Queen Anne style.



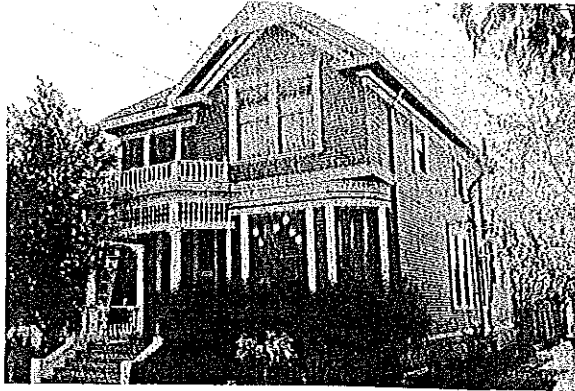
223 Walnut Avenue
Colonial Revival
1902

A classically-influenced portico decorated with floral garlands lend dignity to this residence. A variety of dormers create a lively roofline.



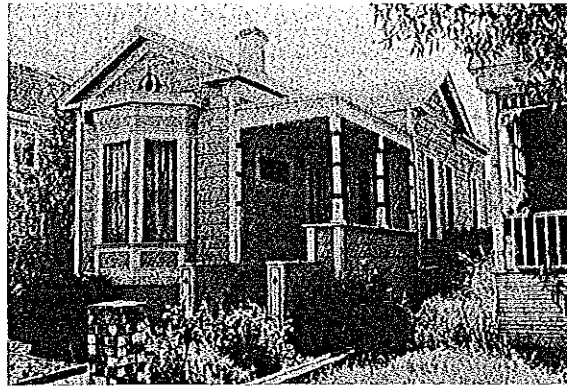
230 Walnut Avenue
Modernistic
1936-37

Designed by William Wurster, noted Bay Area architect, this commercial building was very forward-looking for the era during which it was built. Although contemporary, the front overhang with simple columns reflects Wurster's interest in traditional Early California styles.



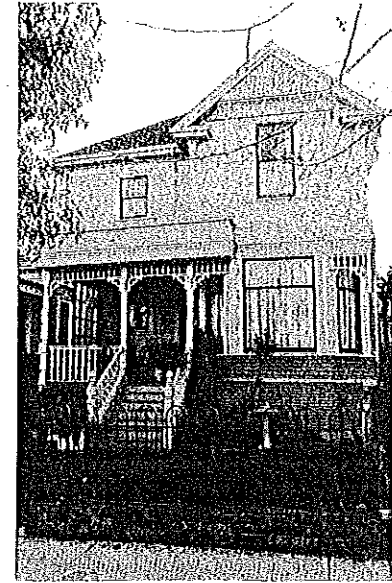
239 Walnut Avenue
Colonial Revival
1900

This eclectic residence employs design elements from both Eastlake and Queen Anne styles as well as Colonial Revival and melds them into a pleasing combination. The balustrade over the porch is particularly interesting.



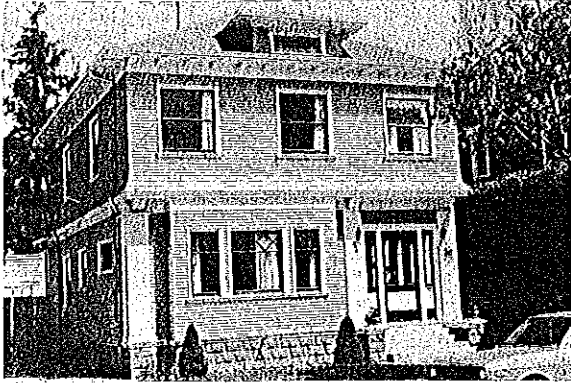
241 Walnut Avenue
Italianate
1880

This graceful cottage manages to retain the dignity of a larger Italianate mansion in a small-scaled residence.



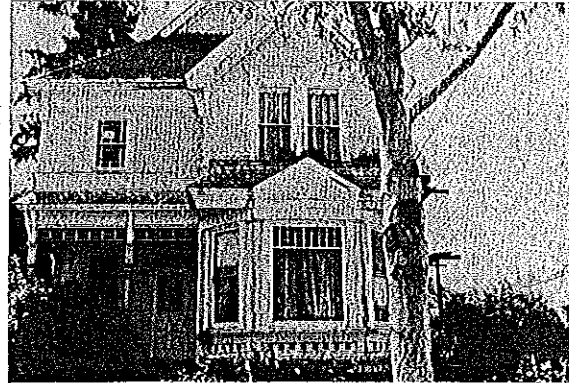
245 Walnut Avenue
Queen Anne
1888

A well refurbished residence featuring a cutaway corner bay window and a beautifully detailed porch and balcony balustrade. The front gable end illustrates the fondness of Queen Anne style builders for applied decoration such as contrasting shingles, horizontal siding, and wood bands.



310 Walnut Avenue
Colonial Revival
1905 or 1910

With its hip roof and carved rafters under the soffits, this residence exemplifies the "Classic Box" subcategory of the Colonial Revival style. Popular in the Bay Area, this style was developed to be more orderly and fit onto smaller lots than the rambling Queen Anne style.



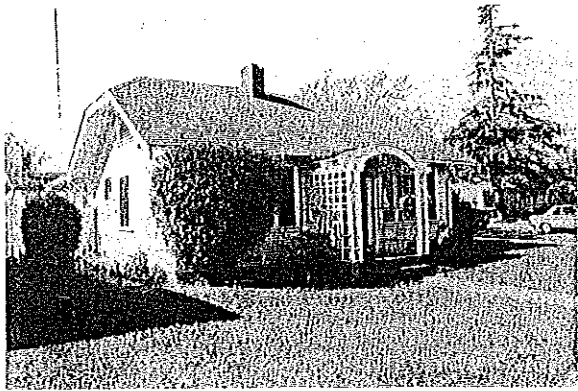
315 Walnut Avenue
Eastlake/Queen Anne
1885-90

Blending the verticality of the Eastlake style and the complex roof lines of the Queen Anne style, this residence retains much of its original detail. The flashed glass (colored panes) in the front windows and the decorative woodwork at the porch lend luxuriousness to the facade.



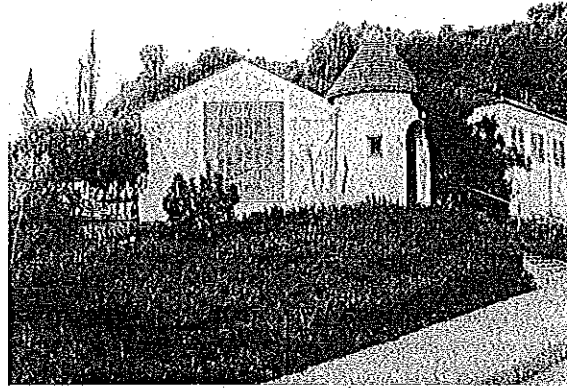
716 Walnut Avenue
Craftsman
1910

Located in one of the best groupings of Craftsman style bungalows in Santa Cruz, this fine Craftsman house is covered with shingles and has a sweeping roof supported by knee braces. The windows, grouped in horizontal bands, are highlighted by small square panes in the upper sash.



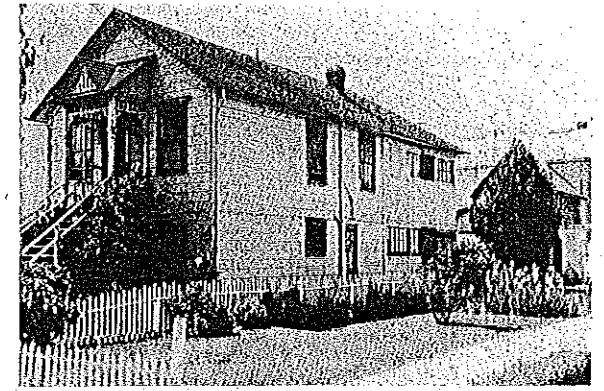
721 Walnut Avenue
Craftsman
1910

A bungalow with an unusual jerkinhead roof. An elegant arched trellis identifies the entry.



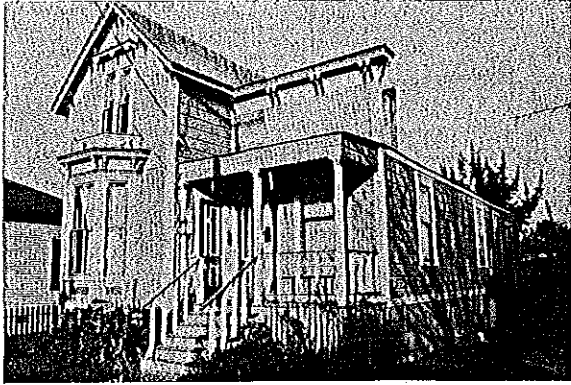
1013 Walnut Avenue
Period Revival
1930

Combining French and Tudor influences — the entry tower is French and the half timbering decoration is Tudor — the result is a pleasing blend. This small residence is beautifully sited on a slope.



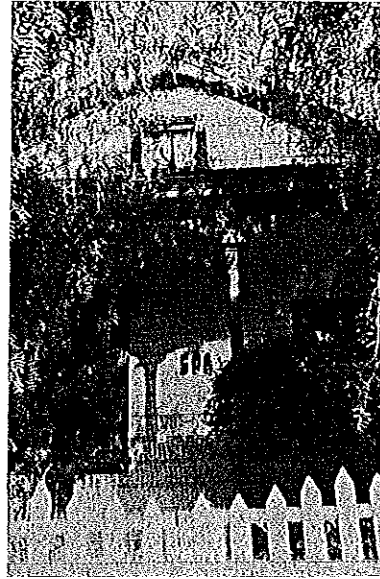
341 Washington
Grason Court
Vernacular
1865-75

An Eastlake style porch adorns this utilitarian residence. The first floor is raised and an addition has been added to the rear.



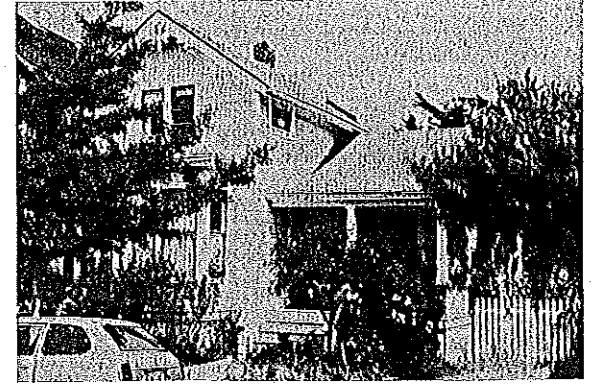
348 Washington
Italianate Influence
1865-75

A beautifully detailed slanted bay window and handsome cornices make this residence noteworthy. A wing to the back is faced with a parapet false front wall of the Italianate period. Removal of a later-added balustrade over the bay window would greatly enhance the appearance of the residence.



508 Washington
Vernacular
1870-85

A one and one-half story residence with its front facing gable decorated only by a simple porch. An authentic type picket fence enhances the property.



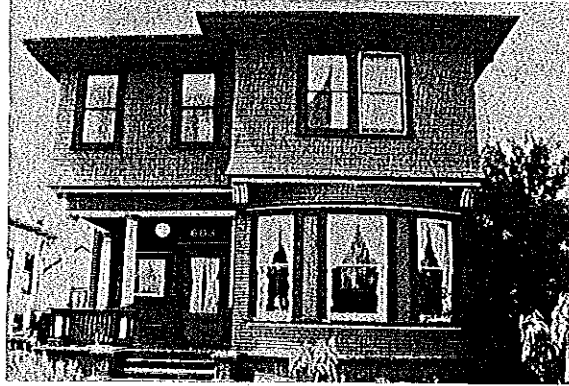
512 Washington
Stick-Eastlake
1870-85

This two story residence uses the L-plan with side porch. Decorative shingles and decorative woodwork at the gable show the influence of the Eastlake style.



518 Washington
Vernacular
1879-85

This simple vernacular house retains its original siding and 2/2 windows with moulding at the crowns. The house appears to have been raised and new stairs added.



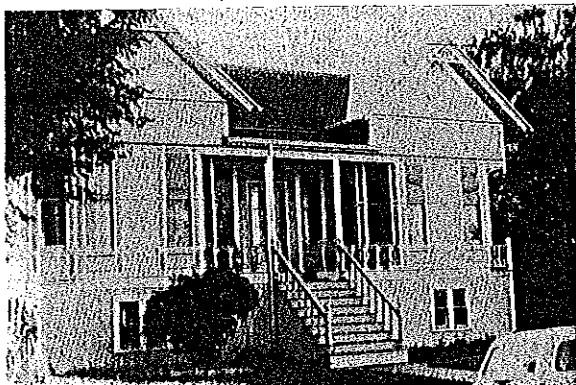
603 Washington
Colonial Revival
1905

A porch supported by classical columns and a curving bay window dresses up this dignified two story residence.



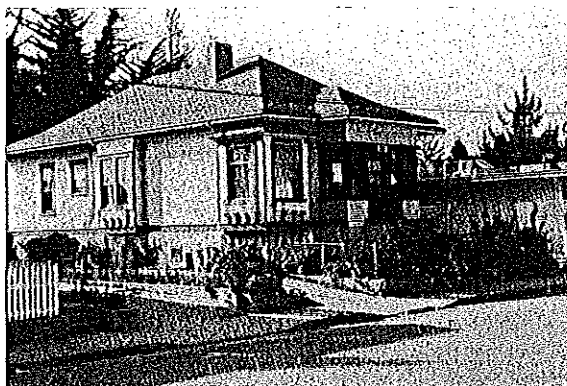
620 Washington
Vernacular
1865-70

The arched window frames and bay window toward the rear are Italianate details and create a stately appearance. A portico with a balustrade above further enhances the residence.



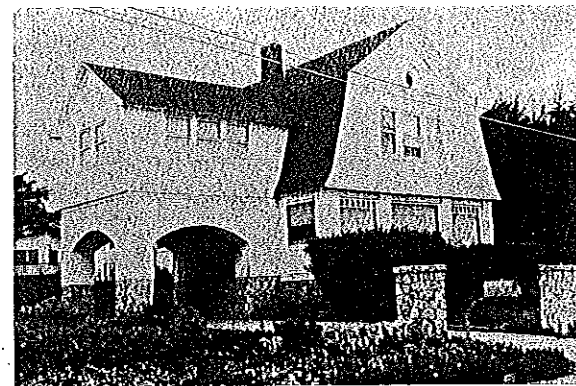
209 Weeks
Eastlake
1885

An Eastlake cottage which is an unusually handsome duplex which retains much of its applied decorative wood trim.



221 Weeks
Colonial Revival
1900

A rowhouse type residence, the corner and side bay windows retain their decorative supporting brackets. Classical columns support the porch.



1206 West Cliff Drive
Shingle
1895-1900

This gambrel roofed house boasts a *porte cochere* over the driveway with a sleeping room above, a popular device in early 20th century homes. A small round window pierces the gable end.



1310 West Cliff Drive
Log Cabin
1930

Actual logs mortared together form this residence, a revival of frontier building techniques. This structure is unique in Santa Cruz.



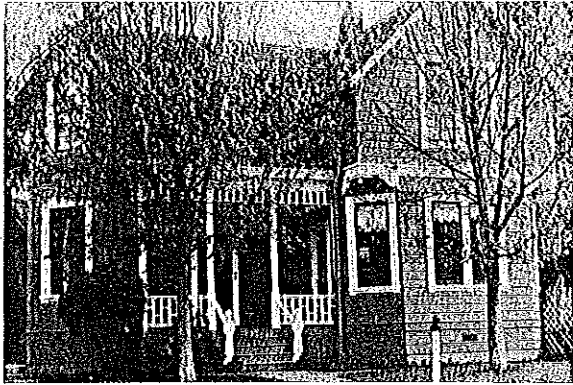
West Cliff Drive Railroad Bridge
Near Front Street
Ca. 1906

Heavy timber trestles support redwood posts and cross bridging in this bridge over the railroad tracks. This bridge was constructed under West Cliff Drive when the tracks were changed from an earlier route which headed down Front Street directly onto the wharf (Hamman personal communication, 1989).



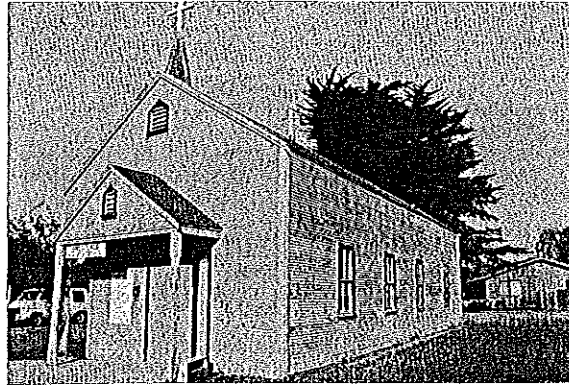
617 Windsor
Vernacular
1880

A one-story residence with a hipped roof. This cottage retains original spindlework at the porch and may have had roof cresting at the top of its roof.



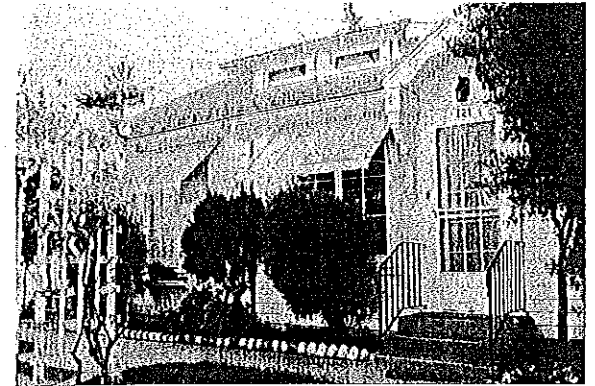
622 Windsor
Eastlake
1885-90

A house of the popular L-shaped plan. Eastlake style spindlework decorates the porch and the cutaway bay windows at the facade.



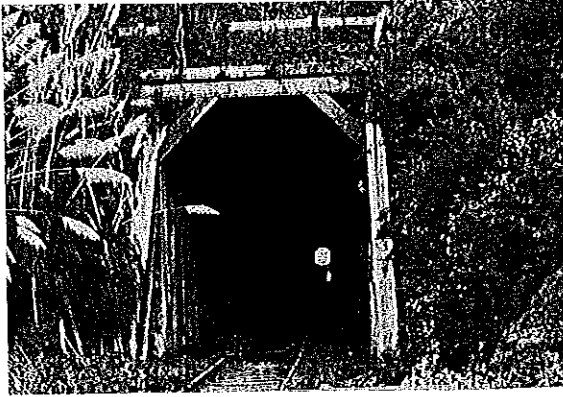
714 Woodrow Avenue
Missionary Baptist Church
Vernacular
1900-1920

A very simple gable roofed building with a pediment to shelter the front door. The only decoration on its plain facade are two pointed arch ventilators. An odd feature of this example of folk architecture is the angling inward of the north wall so that the roof overhangs at only one corner.



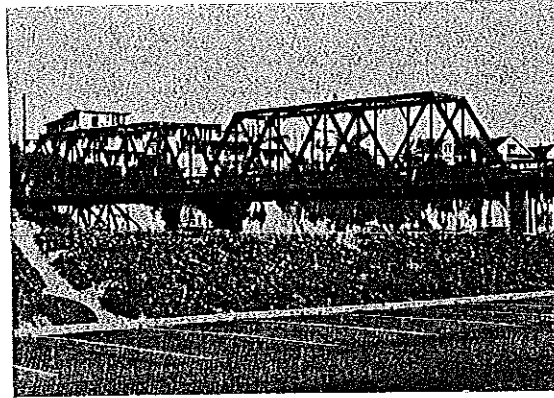
119, 121 Younger Way
Colonial Revival-Craftsman
1920

A tiny duplex which retains interesting detail at the entry porches. The dormer is reminiscent of Craftsman style.



Mission Hill Railroad Tunnel
Under Mission Street
1876

Built by the Santa Cruz and Felton Railroad on the seven mile line from Felton to Santa Cruz, the train originally puffed up the middle of Pacific Avenue around Mission Hill. This tunnel was cut through Mission Hill at great expense one year later to remove the train from the main street. (Koch, *Santa Cruz County Parade of the Past*, 1973). Construction is of heavy timber with 1' by 18" thick redwood posts supporting the roof and sides of the tunnel while 3" planks hold back the earth. The tunnel was gunited at some time during this century.



San Lorenzo River Bridge
At the Beach
Ca. 1905

Spanning the river mouth, two sections of steel trusses support the railroad tracks and a pedestrian bridge. Concrete abutments at the banks and in the river further support the bridge. This bridge was built by Southern Pacific, replacing earlier timber bridges. At least two bridges preceded it, one of which was washed out in a flood (Hamman personal communication, 1989).

INDEX

<u>SITE</u>	<u>Page</u>
Alhambra Avenue 119	1
Barson Street 428	1
515	1
Berkeley Way 227	2
325	2
Bixby Street 151	2
Blackburn Street 123	3
North Branciforte Avenue 742	3
775	3
1062	4
South Branciforte Avenue 202	4
222	4
235	5
320	5
424	5
430	6
519	6
520	6
523	7

7	7	Broadway
7	7	511
7	7	518
8	8	817
8	8	901
8	8	1023
9	9	1111
9	9	1124
9	9	1215
10	10	1408
10	10	Caledonia Street
10	10	212
10	10	California Street
10	10	241
11	11	516
11	11	518
11	11	615
11	11	703
12	12	821
12	12	827
12	12	Cayuga Street
12	12	505
13	13	Cedar Street
13	13	905
13	13	913
13	13	915
13	13	1003
14	14	1013
14	14	1015

<u>SITE</u>	<u>Page</u>
Center Street	
301	14
310	14
314	15
416	15
711	15
Chestnut Street	
314	16
317	16
346	16
410	17
515	17
Church Street	
307	17
Clay Street	
116	18
Cleveland Street	
202	18
Cliff Street	
311	18
Cypress Avenue	
121	19
207	19
Darwin Street	
324	19

20	East Cliff Drive 1009
20	Elm Street 112
20	211
21	214
21	215
21	217
22	307
22	311
22	315
23	Emeline Avenue 304
23	Escalona Drive 316
23	322
23	323
24	662
24	1420
24	Evergreen Street 261
25	Fernside Street 144
25	Franklin Street 128
25	147

SITE	Page
Frederick Street 515	26
Front Street 420	26
Gault Street 224	26
Golf Club Drive 335	27
Grant Street 407	27
Hammond Street 217	27
High Street 209	28
234	28
246	28
304	29
Highland Avenue 218	29
Jackson Street 120	29
Jenne Street 112	30
118	30

39
39
38
38
37
37
36
36
36

36
35
35
35
34

34
34
33
33

33
32
32
32
31

31
31

30

SITE

520
510
506
504
419
413
406
402
326
323
317-321
Lincoln Street

408
344
333
325
143
Laurent Street

510
311
309
305
Laurel Street

1138
1132
1110
1014
925
King Street

323
314
Keystone Avenue

124
Kennan Street

SITE	Page
Locust Street	
320	39
324	40
Logan Street	
504	40
Main Street	
121	40
Maple Street	
415	41
419	41
Market Street	
147	41
246	42
312	42
434	42
Meder Street	
425	43
Minnie Street	
127	43
Mission Street	
155-157	43
159	44
309	44
315	44
331	45
611	45
717	45
1020	46
1804	46

Morrissey Boulevard
 219
 230

Mott Avenue
 101
 311
 403
 415
 416
 419
 420
 423
 424

Myrtle Street
 112
 121
 125
 129
 211
 340

Neary Street
 110

Ocean Street
 325

Oceanview Avenue
 221
 303
 317
 324
 411
 415
 513
 524
 537

46
 47

47
 47
 48
 48
 48
 49
 49
 49
 49
 50
 50
 51
 51
 52

52
 52

52
 53
 53
 53
 54
 54
 54
 55
 55
 55

SITE

Page

SITE	Page
Owen Street 228	56
Pacheco Avenue 206	56
Pacific Avenue 610	56
1118	57
1119	57
1132	57
1521	58
1545	58
Pearl Street 206	58
Peyton Street 144	59
248	59
Pine Street 724	59
737	60
824	60
Plum Street 118	60
Plymouth Street 332	61
342	61
Post Street 118	61

62

Potrero Street
217

62

Rathburn Avenue
130

62

Rigg Street
125

63

River Street
915

63

Riverside Avenue
812

63

823

64

828

64

831

65

835

65

839

65

844

65

Roberts Street
203

66

Santa Cruz Street
126

66

School Lane
129

66

Seabright Avenue
1532
1722

67

Seaside Street
913

67

Second Street
512

68

525

SITE	Page
Soquel Avenue 532	68
Spruce Street 312 325	68 69
Sumner Street 407 604	69 69
Taylor Street 109 114 116	70 70 70
Third Avenue 239	71
Third Street 919	71
Towne Terrace 129	71
Trescony Street 205	72
Trevethan Avenue 127	72
Union Street 233 235 237 239 321 327 331	72 73 73 73 74 74 74

	Van Ness	Walk Circle	Walnut Avenue	Washington Street	Weeks
75	141		211	341	209
75	219	115	223	348	221
75	233		230	508	
76	241		239	81	
76	503		241	81	
75			245	80	
75			310	81	
76			315	82	
76			716	82	
76			721	82	
76			1013	82	
76				83	

<u>SITE</u>	<u>Page</u>
West Cliff Drive	
1206	83
1310	84
West Cliff Drive	
Railroad Bridge	84
Windsor	
617	84
622	85
Woodrow	
714	85
Younger Way	
119	85
121	85

FTR A:005
1030-50.40

