

# CHAPTER 7

## FIGURES

---

1-1	Regional Location .....	7-3
1-2	Vicinity Location .....	7-4
2	Wharf Expansion Over Time.....	7-5
3-1	Wharf Master Plan Concept .....	7-6
3-2	Proposed Public Access and Recreational Improvements .....	7-7
3-3	Model of Proposed Wharf Development.....	7-8
3-4	Cross Sections.....	7-9
3-5A	Concept Site Plan – Small Boat Landing .....	7-10
3-5B	Concept Site Plan – South Landing.....	7-11
3-5C	Concept Site Plan – Events Pavilion.....	7-12
3-5D	Concept Site Plan – Relocated Entrance .....	7-13
3-6	<b>REVISED</b> -Proposed Wharf Entrance Relocation .....	7-14
3-7A	Entry Relocation Site Plan .....	7-15
3-7B	Entry Gate/Sign Structure Cross Section.....	7-16
3-7C	Entry Gate/Sign Structure Elevation .....	7-17
3-8A	East Promenade Conceptual Site Plan .....	7-18
3-8B	East Promenade Representative Site Plan & Cross Section.....	7-19
4.8-1	<b>NEW</b> -Representative Photos of Wharf Walkways .....	7-20
4.8-2	<b>NEW</b> -Representative Photos of Nature and Wildlife Viewing at the Wharf.....	7-21
4.8-3	<b>NEW</b> -Representative Photos of Existing Wharf Fishing .....	7-22
4.8-4	<b>NEW</b> - Existing and Proposed Wharf Fishing Areas.....	7-23
4.8-5	<b>NEW</b> -Representative Photos of Existing Wharf Boat Landings.....	7-24
4.8-6	<b>NEW</b> -Representative Photos of Existing Wharf Recreational and Cultural Activities.....	7-25
4.8-7	<b>NEW</b> -Wharf Cross Section with Proposed Improvements .....	7-26
4.8-8	<b>NEW</b> -Concepts for Fishing Hole / Sea Lion Viewing Relocation.....	7-27
4.8-9	<b>NEW</b> -Comparison of Fishing Opportunities .....	7-28

*INTENTIONALLY LEFT BLANK*



**FIGURE 1-1**

**Project Location**

Santa Cruz Wharf Maintenance Project

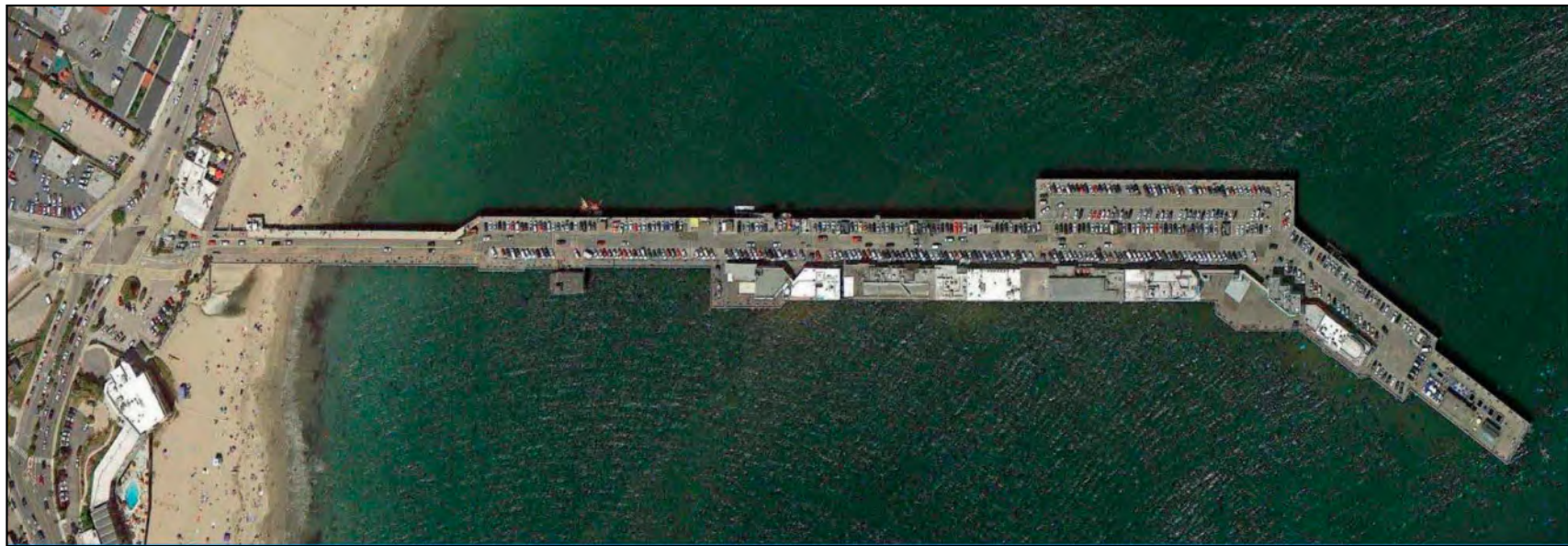
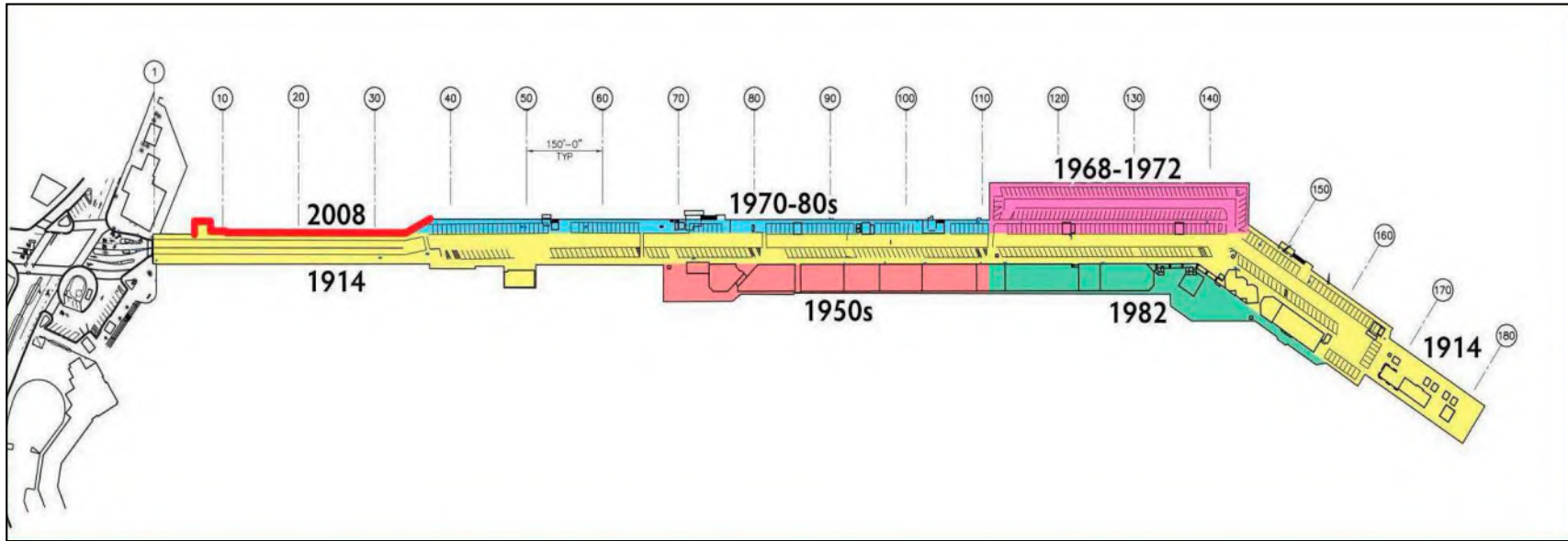




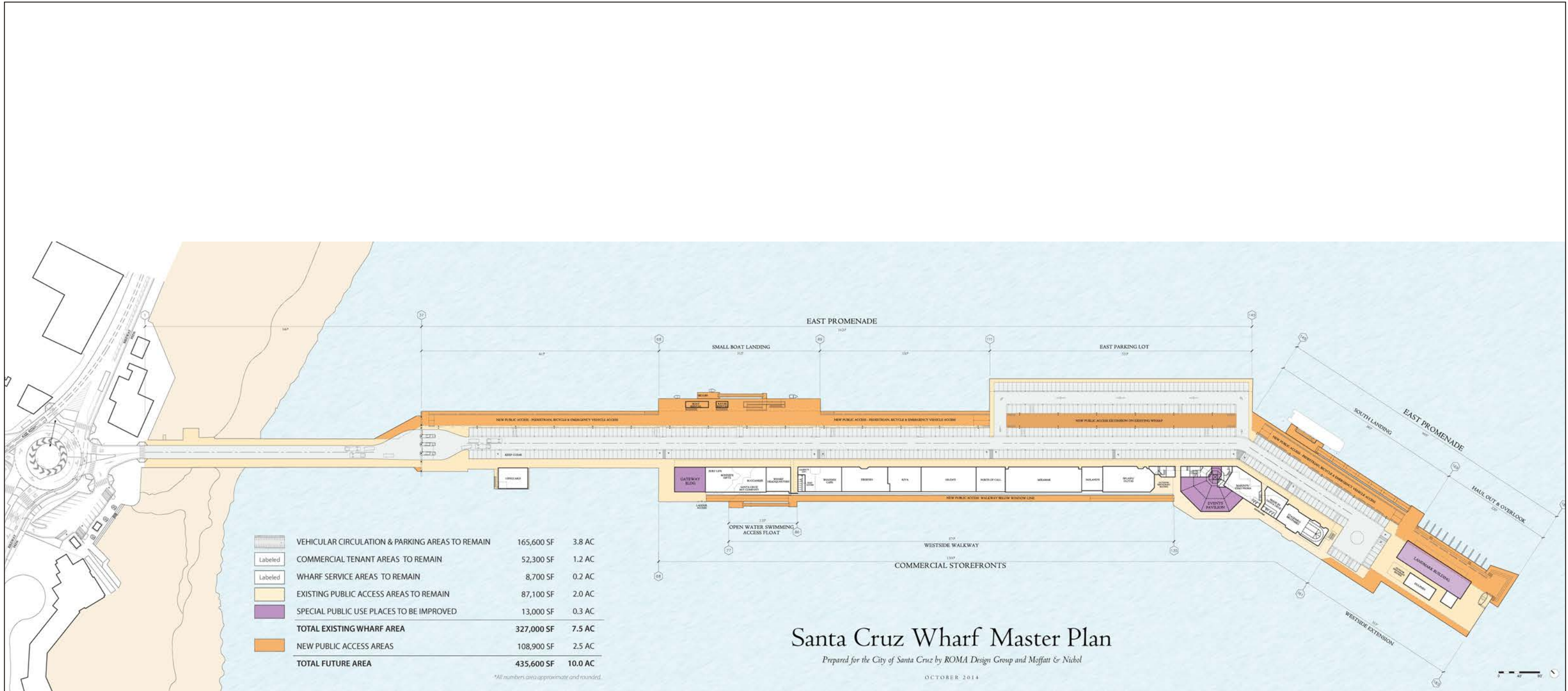
SOURCE: Santa Cruz Wharf Master Plan (2014)

**FIGURE 1-2**  
 Vicinity Location  
 Santa Cruz Wharf Master Plan EIR





SOURCE: Santa Cruz Wharf Master Plan (2014)



SOURCE: ROMA Design Group; Moffat & Nichol (2014)





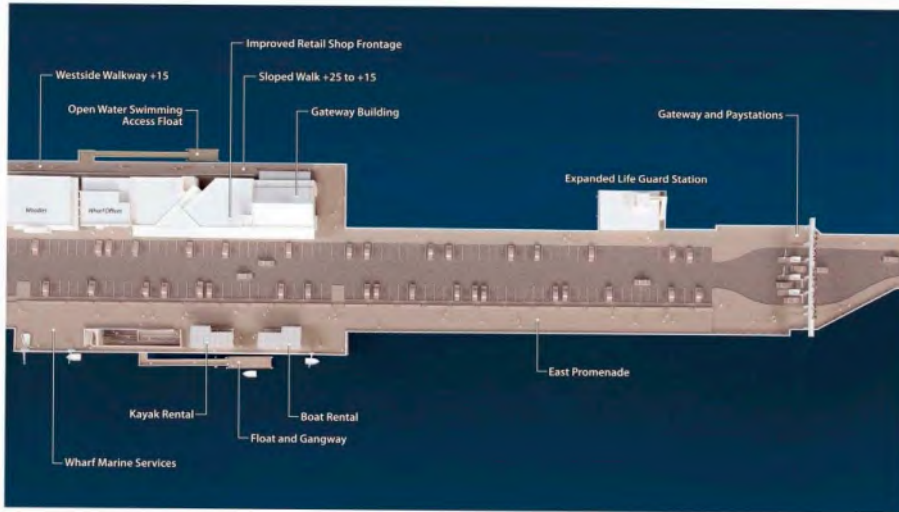
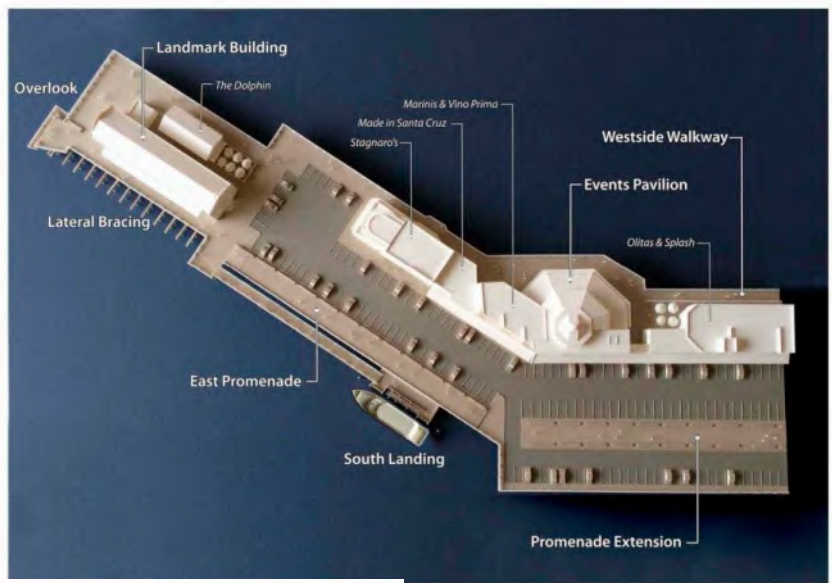
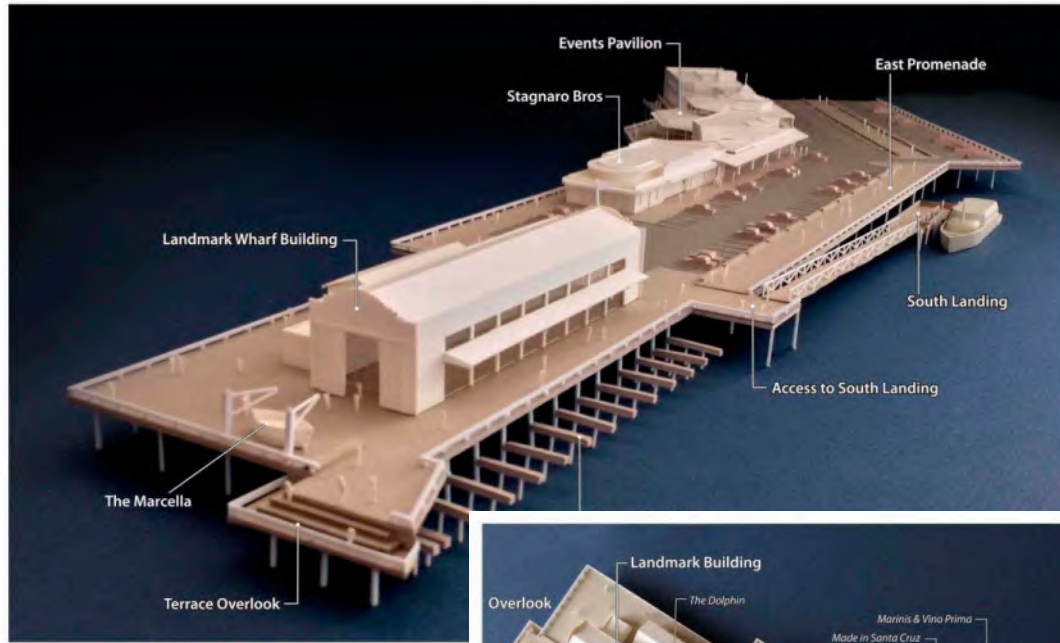
Prepared by City of Santa Cruz for General Visual Representation of Wharf Expansion

SOURCE: City of Santa Cruz

**FIGURE 3-2**

Proposed Public Access & Recreational Improvements

Santa Cruz Wharf Master Plan EIR



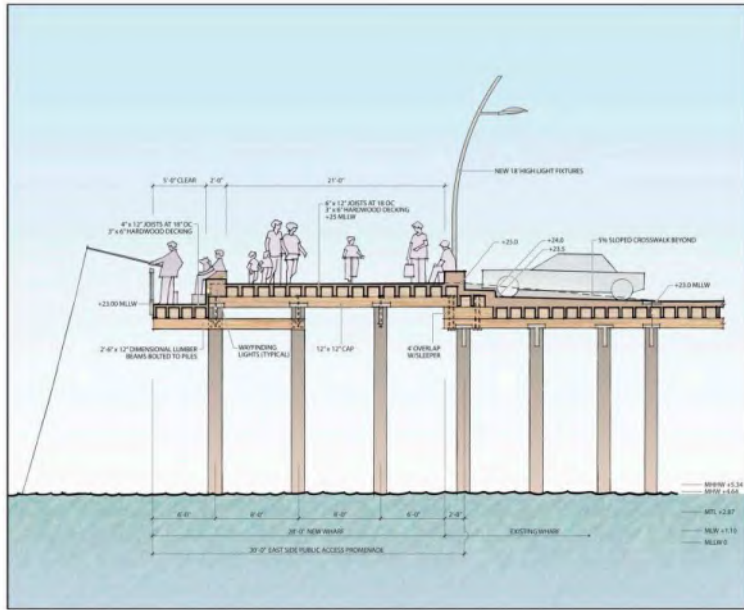
SOURCE: Santa Cruz Wharf Master Plan (2014)

FIGURE 3-3

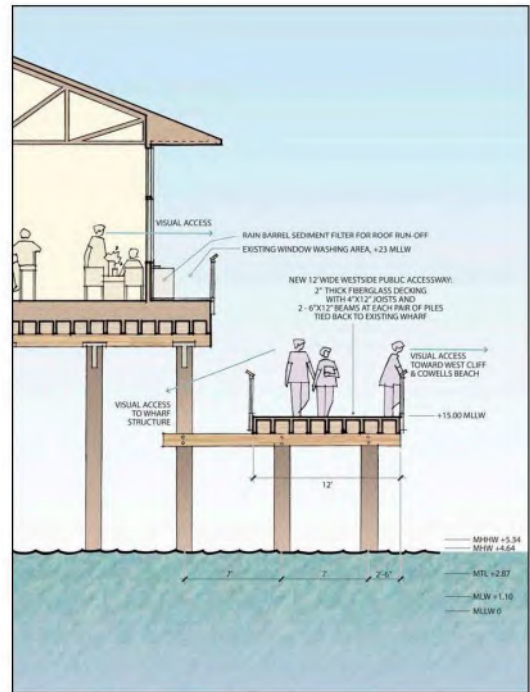
Model of Proposed Wharf Development

Santa Cruz Wharf Master Plan EIR

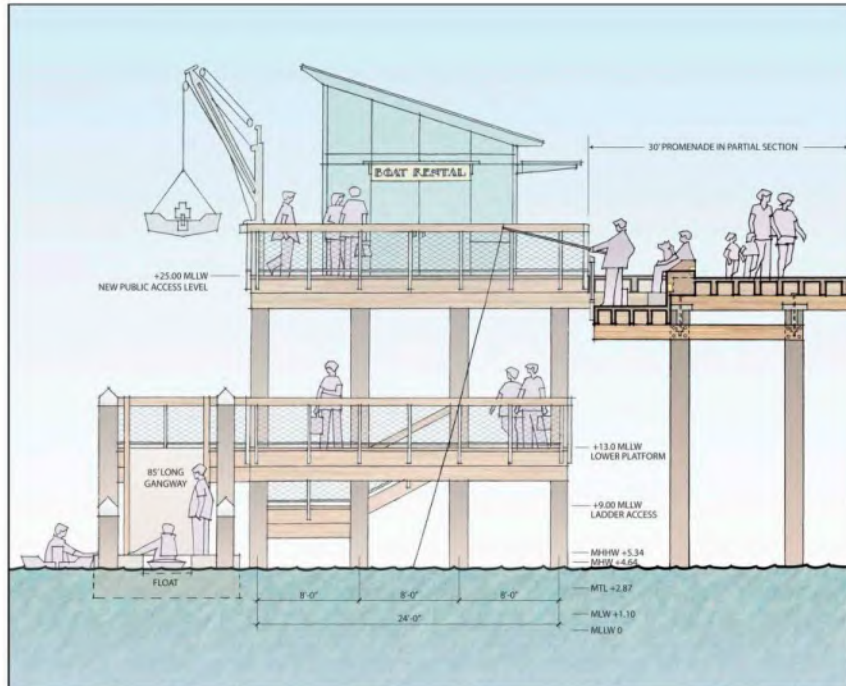




East Promenade



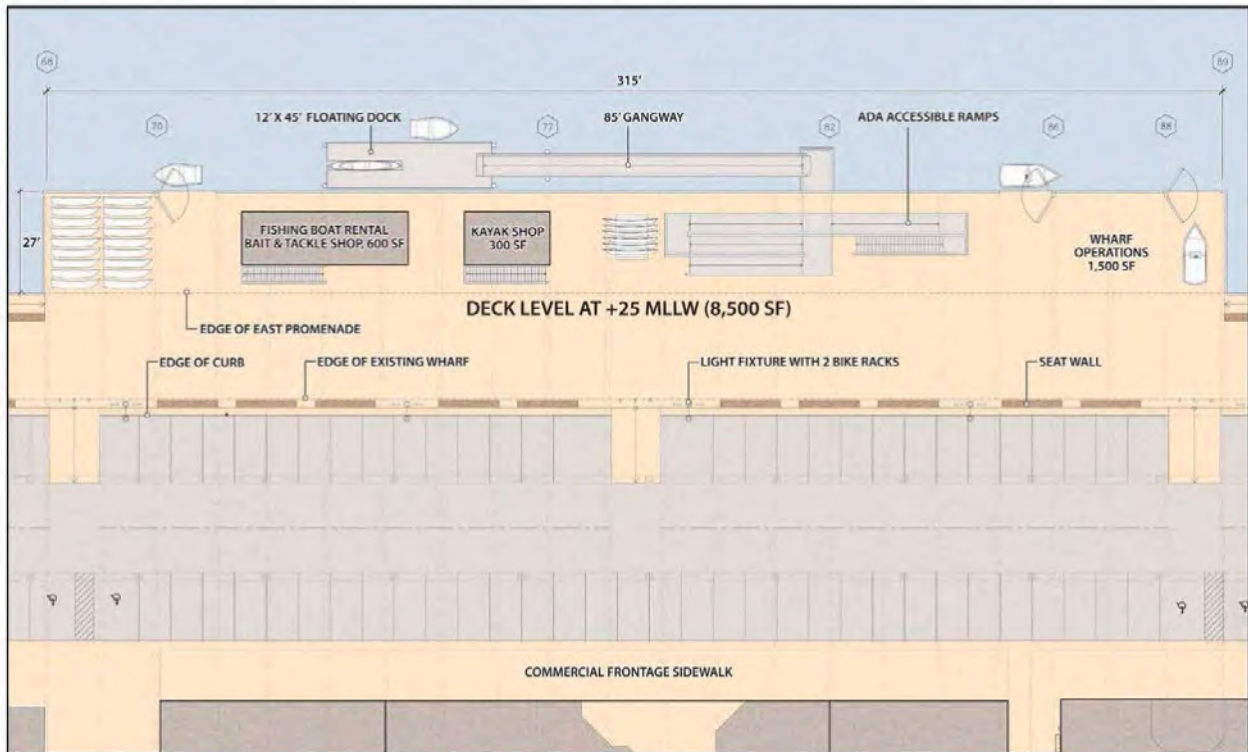
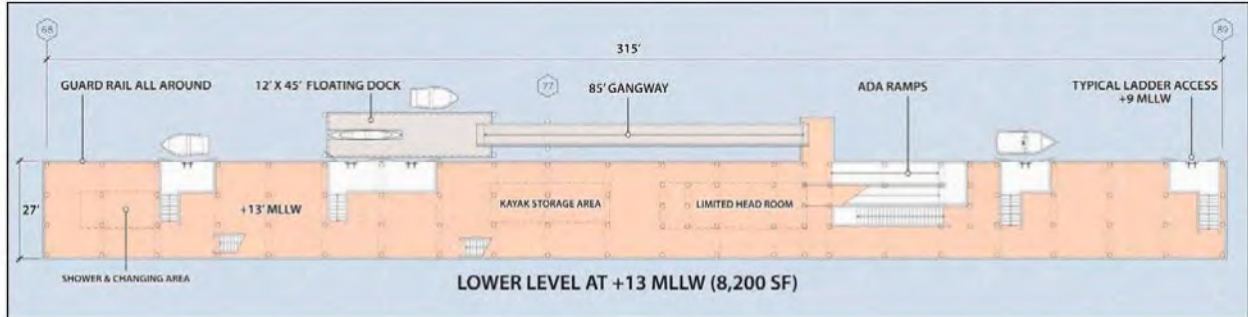
Westside Walkway



North Elevation of Small Boat Landing Adjacent to East Promenade

SOURCE: Santa Cruz Wharf Master Plan (2014)

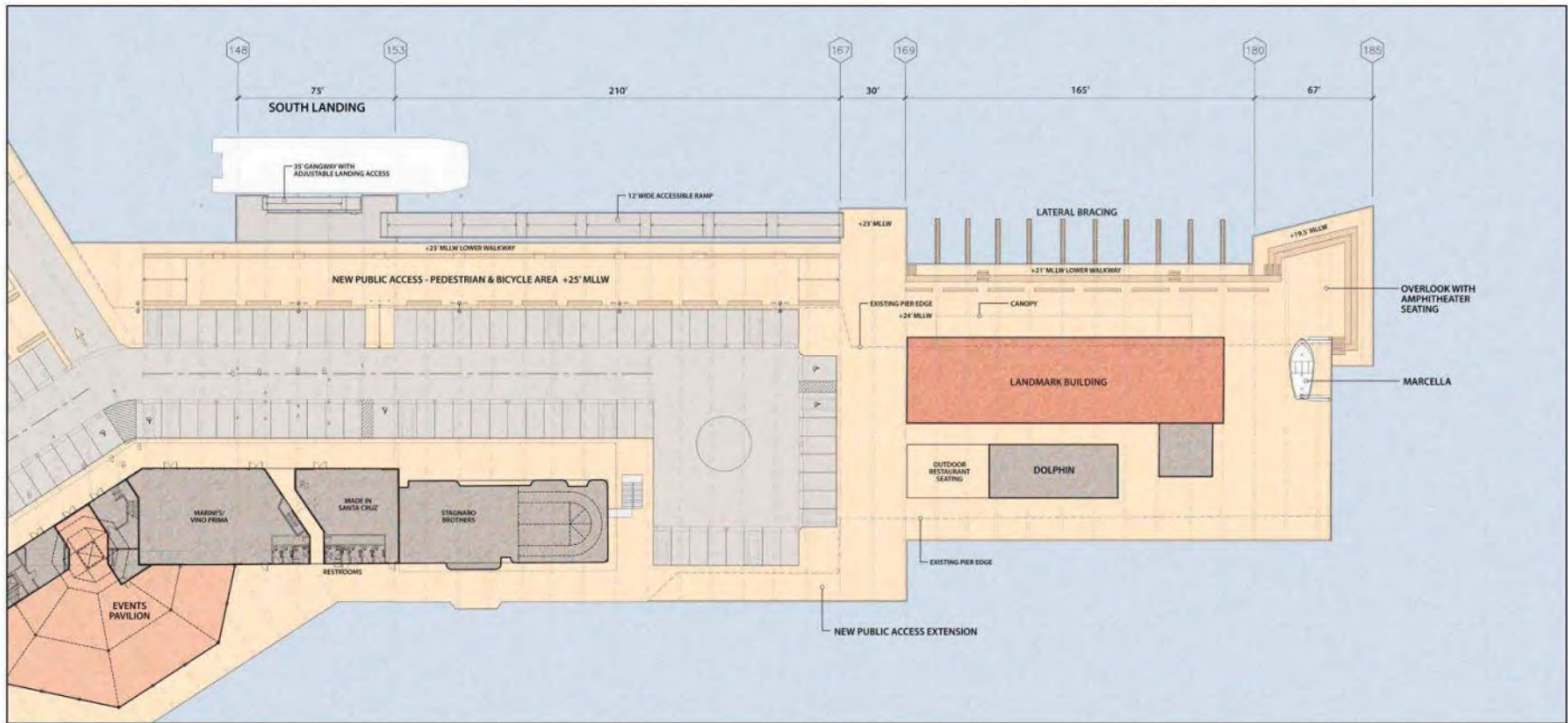
FIGURE 3-4



Plan of the deck and platform levels of the Small Boat Landing

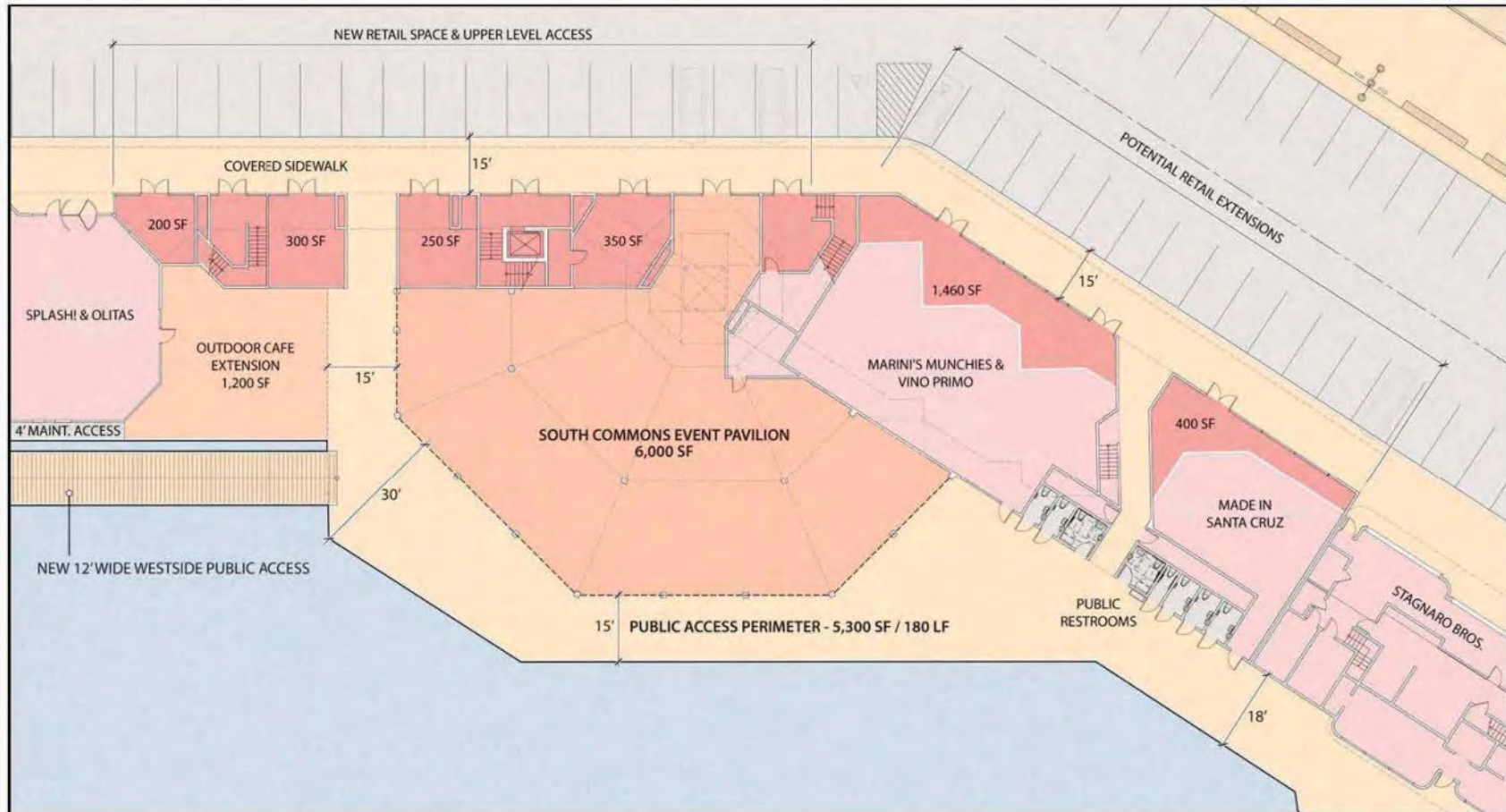
SOURCE: Santa Cruz Wharf Master Plan (2014)





SOURCE: Santa Cruz Wharf Master Plan (2014)

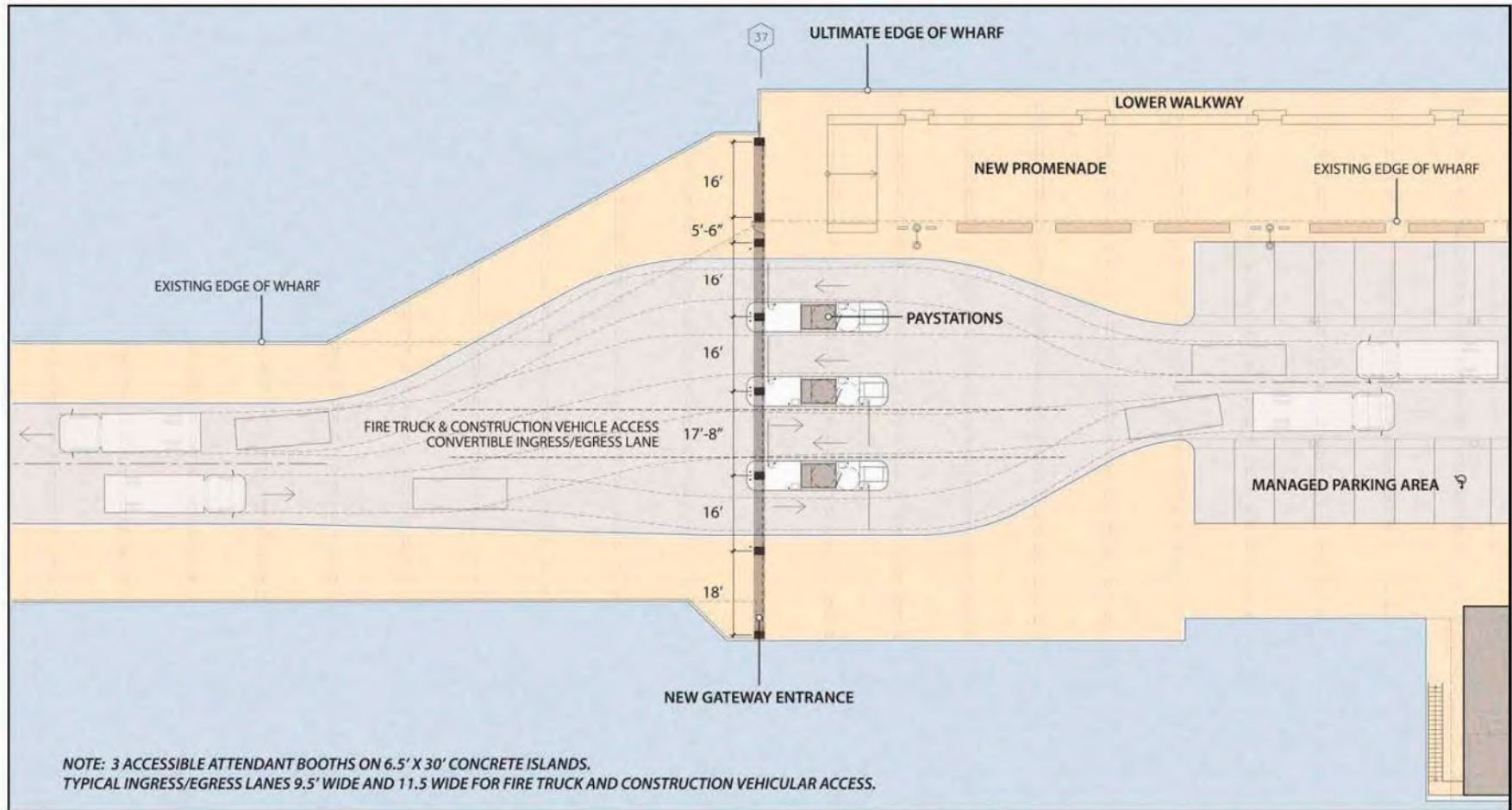
**FIGURE 3-5B**  
 Concept Site Plan - South Landing  
 Santa Cruz Wharf Master Plan EIR



The plan for the Events Pavilion includes the addition of small commercial tenant spaces and the extension of the existing commercial buildings.

SOURCE: Santa Cruz Wharf Master Plan (2014)



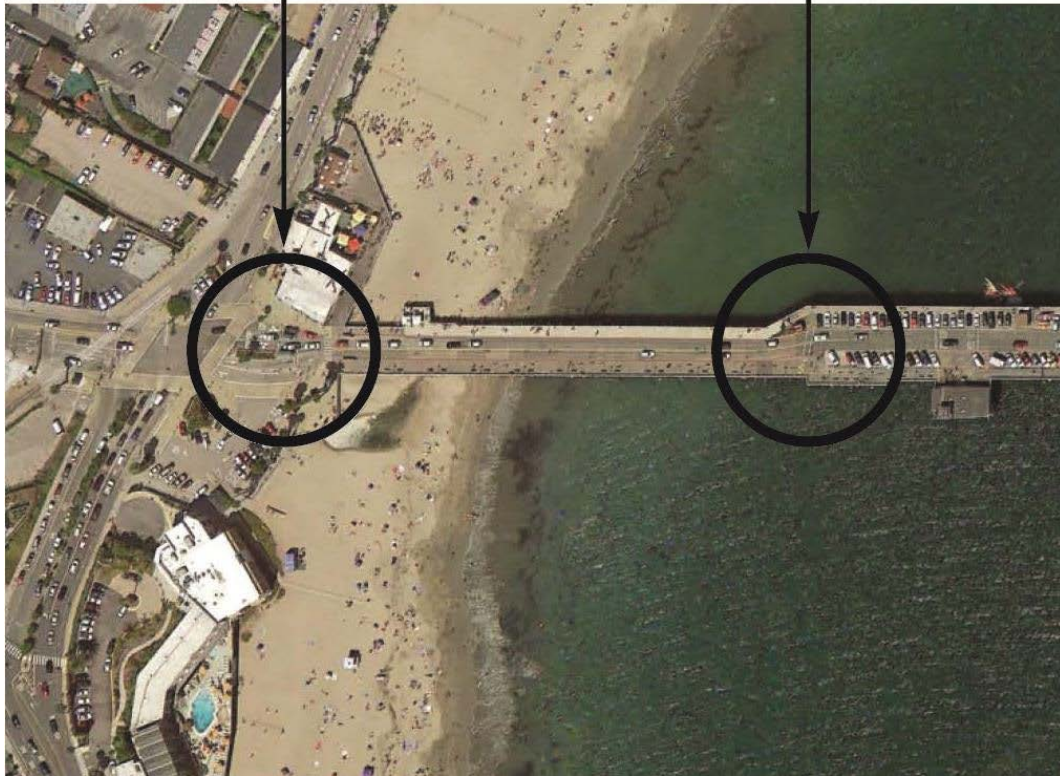


The pay stations provide four lanes in and out of the Wharf – two in/out on most days and one in and three out when needed.

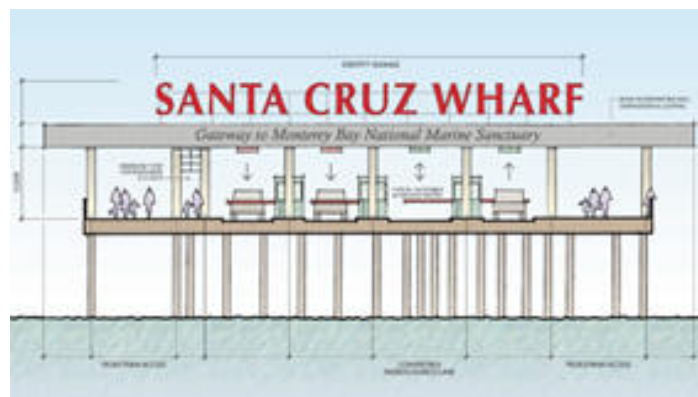
SOURCE: Santa Cruz Wharf Master Plan (2014)

Existing Wharf Entrance

Relocated Entrance



The Master Plan provides a general example of signage, but a specific design, size, shape, and color will be developed and provided for public review before a final design is selected



SOURCE: City of Santa Cruz (2017)

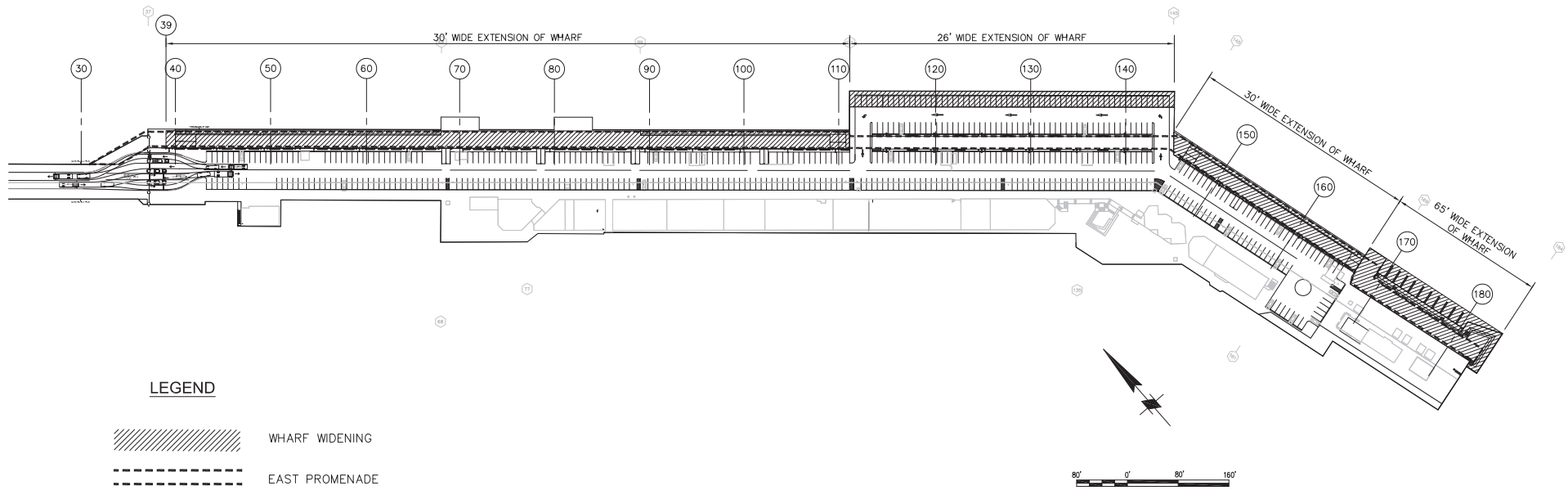
FIGURE 3-6

Proposed Wharf Entrance Relocation

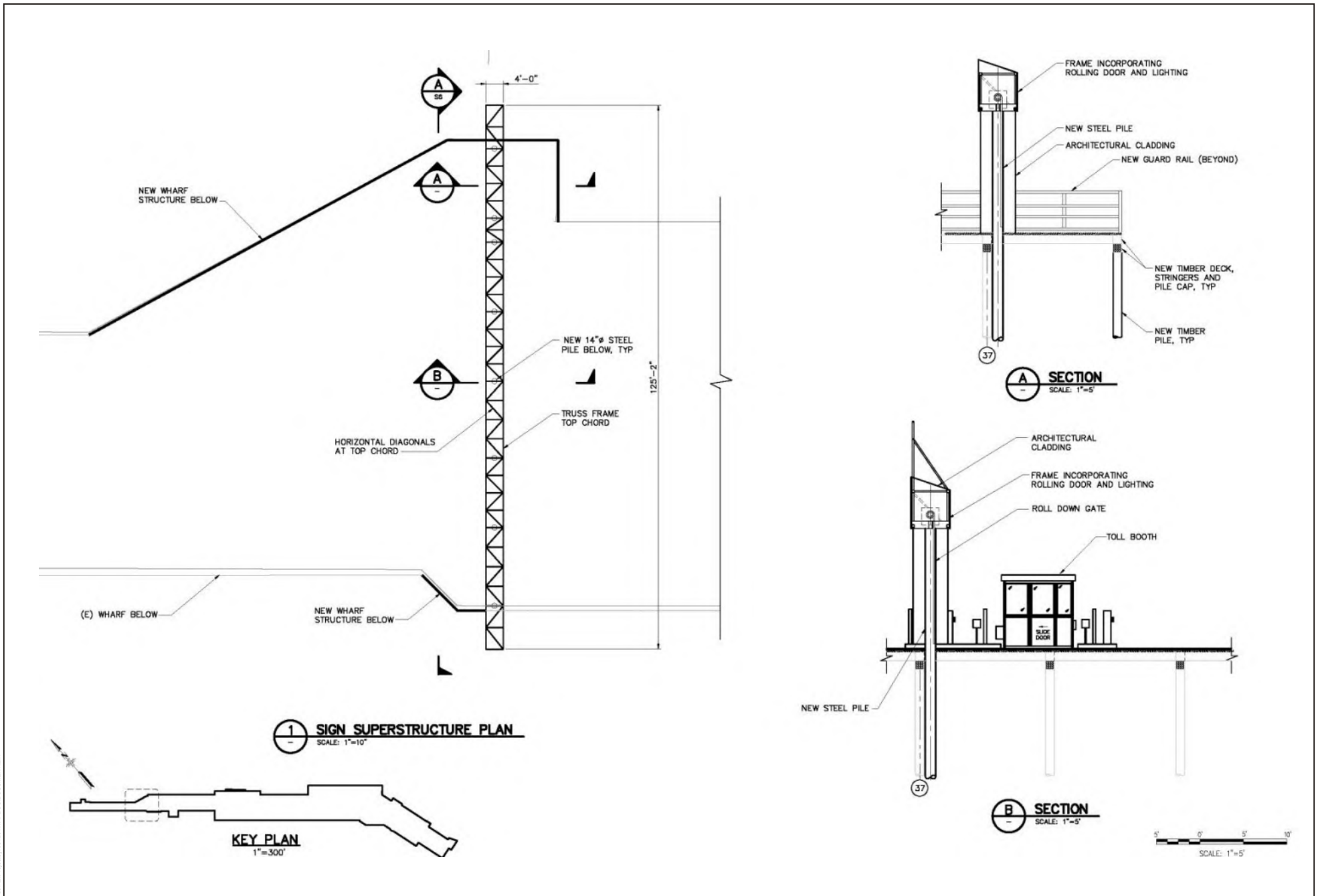
Santa Cruz Wharf Master Plan EIR



# EAST PROMENADE SANTA CRUZ WHARF



SOURCE: City of Santa Cruz Public Works Department

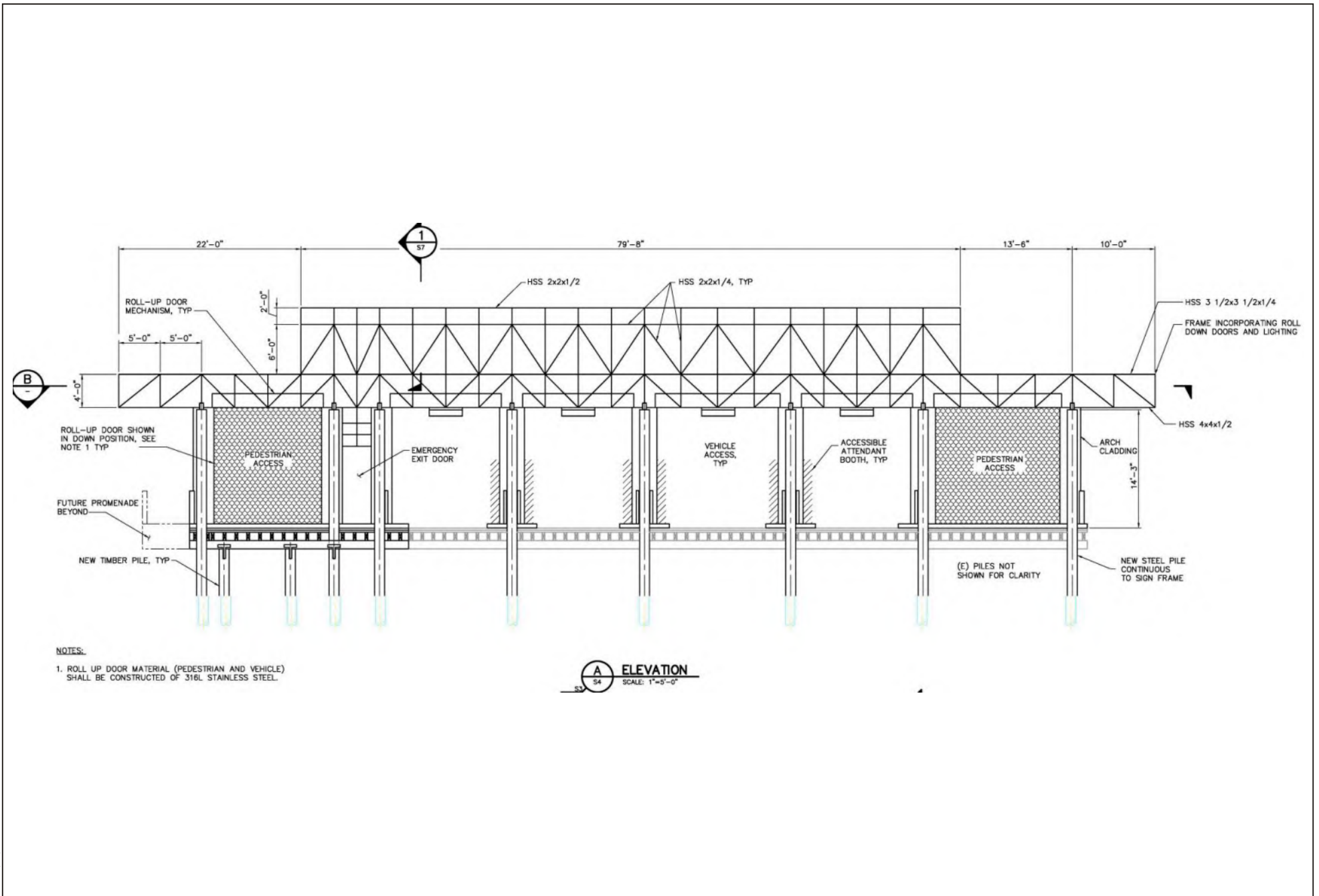


SOURCE: City of Santa Cruz Public Works Department

**FIGURE 3-7B**

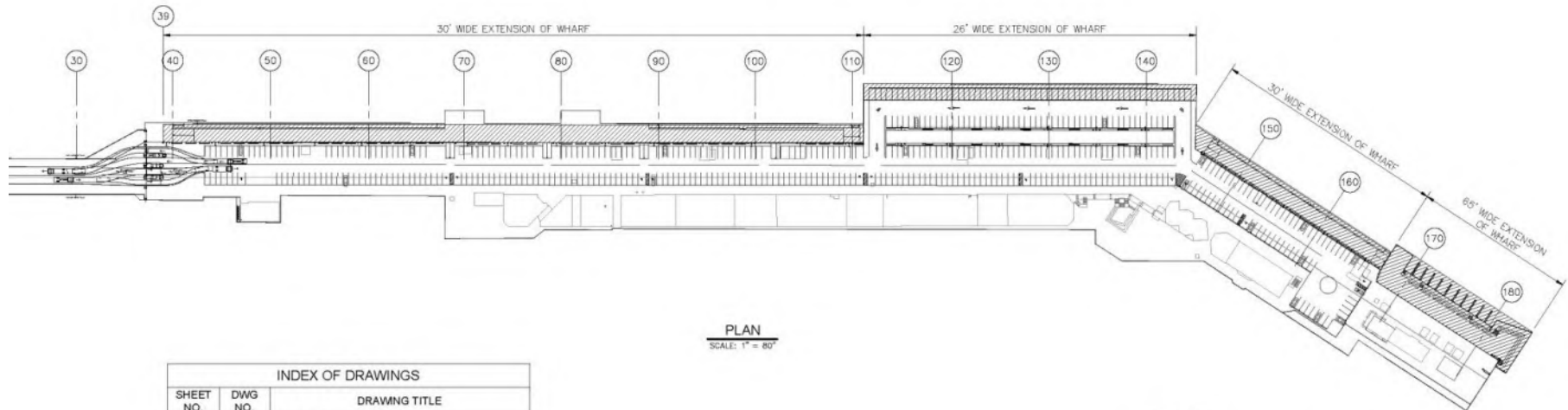
Entry Gate/Sign Structure Cross Section





SOURCE: City of Santa Cruz Public Works Department

# EAST PROMENADE SANTA CRUZ WHARF

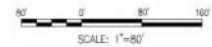


**PLAN**  
SCALE: 1" = 80'

INDEX OF DRAWINGS		
SHEET NO.	DWG NO.	DRAWING TITLE
1	T1	TITLE SHEET
2	S1	GENERAL NOTES
3	S2	PLAN AND SECTIONS - 1
4	S3	PLAN AND SECTIONS - 2
5	S4	PLAN AND SECTIONS - 3
6	S5	PLAN AND SECTIONS - 4
7	S6	STRIPING PLAN - 1
8	S7	STRIPING PLAN - 2
9	S8	STRIPING PLAN - 3
10	S10	PLAN AND SECTIONS - KAYAK DOCK
11	S11	DETAIL - PLAN AND ELEVATION
12	S12	PLAN AND SECTIONS - RENTAL, PUBLIC, STAFF
13	S13	RAMP SECTIONS
14	S14	DETAILS

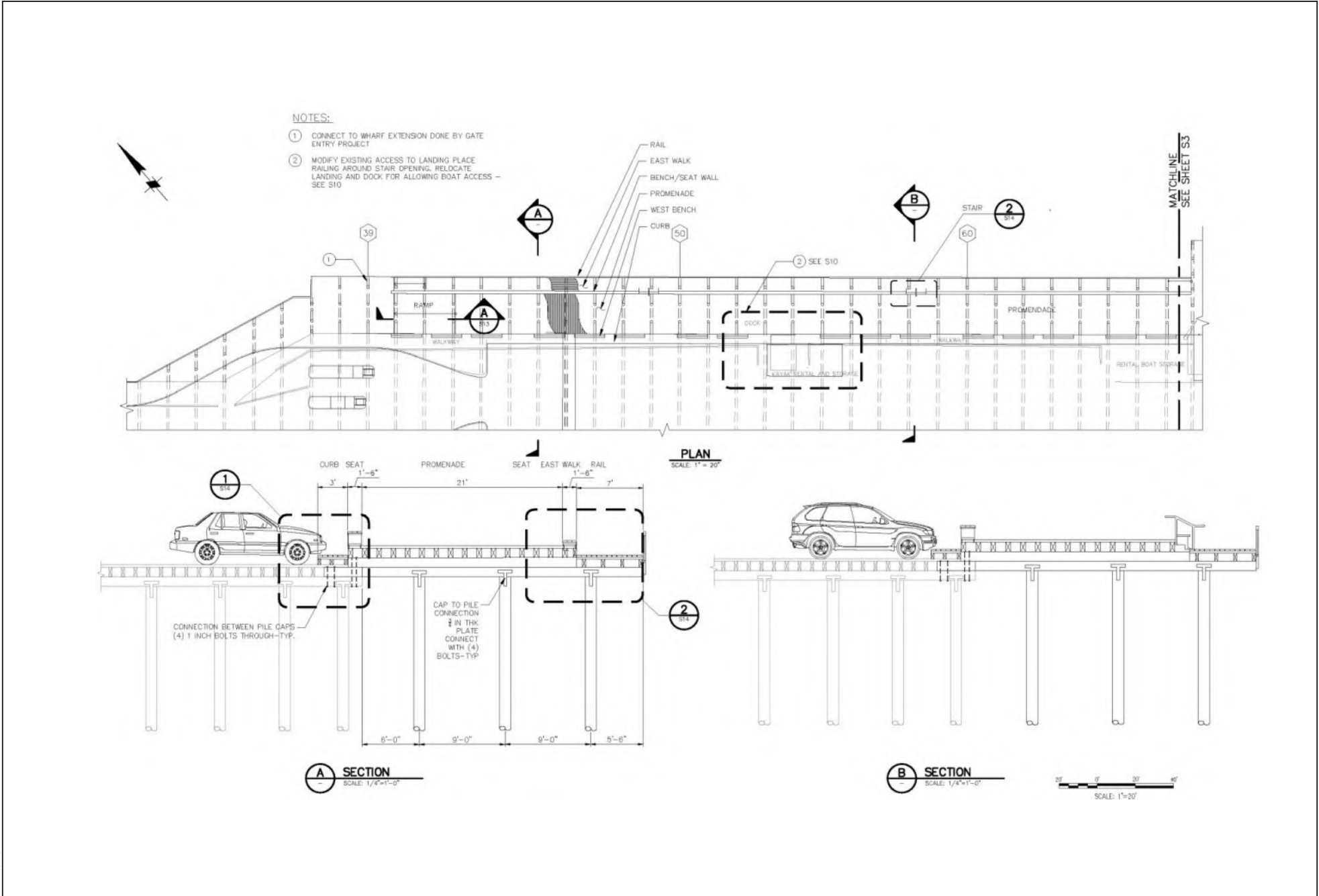
**NOTES:**

1. PARKING ARRANGEMENT SHOWN IS REVISED FROM EXISTING. SEE SHEETS S6, S7 AND S8.



SOURCE: City of Santa Cruz Public Works Department





SOURCE: City of Santa Cruz Public Works Department



**FIGURE 3-8B**  
East Promenade Representative Site Plan & Cross Section  
Santa Cruz Wharf Master Plan EIR



West Walkway Near Entrance



West Walkway Near Lifeguard Headquarters



East Walkway Looking Toward Wharf Entrance



Pedestrians in Vehicle Lanes



Walkway Overlooking Commons Area



Pedestrian Lane in Parking Lot

Z:\Projects\101201\101201\DOCUMENTS\FIG 4.8-1

SOURCE: Moffat & Nichol and City of Santa Cruz

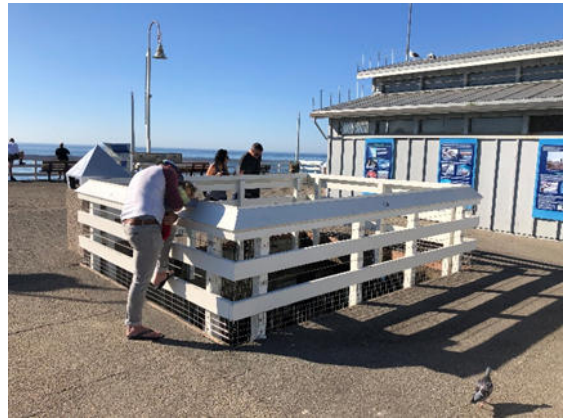
**FIGURE 4.8-1**

Representative Photos of Wharf Walkways  
Santa Cruz Wharf Master Plan Recirculated Partial Draft EIR

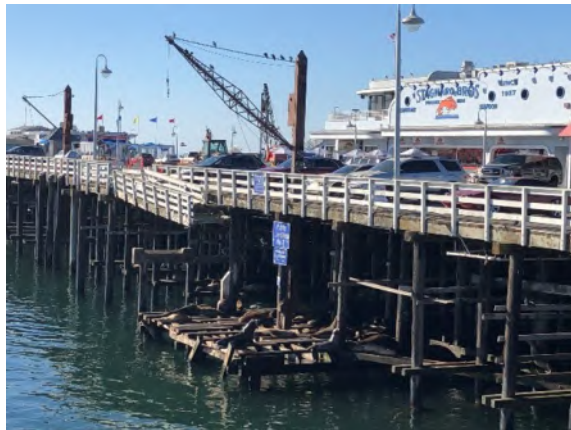




Viewing Sea Lions from Fishing Holes



Viewing Sea Lions from Fishing Holes



View of Sea Lions on Landing on East Side of Wharf



Nature Photography



Sea Lion Views from Landing



Sea Lion Viewing From Landing #1

SOURCE: City of Santa Cruz

FIGURE 4.8-2

Representative Photos of Nature and Wildlife Viewing at the Wharf

Santa Cruz Wharf Master Plan Recirculated Partial Draft EIR



“Tailgate” Fishing on East Side of Wharf that Encroaches into Pedestrian Walkway



“Tailgate” Fishing on East Side of Wharf that Encroaches into Pedestrian Walkway



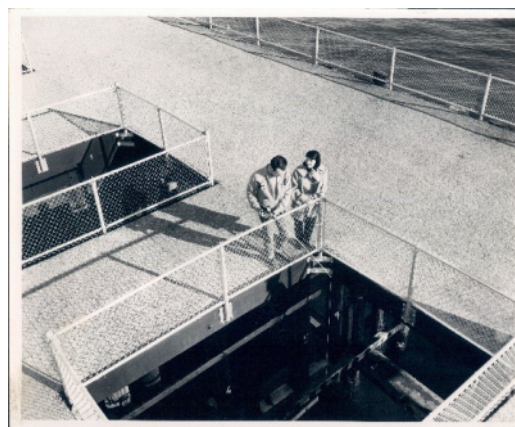
Other East Side Fishing



Other East Side Fishing



End of Wharf Fishing



Fishing Holes

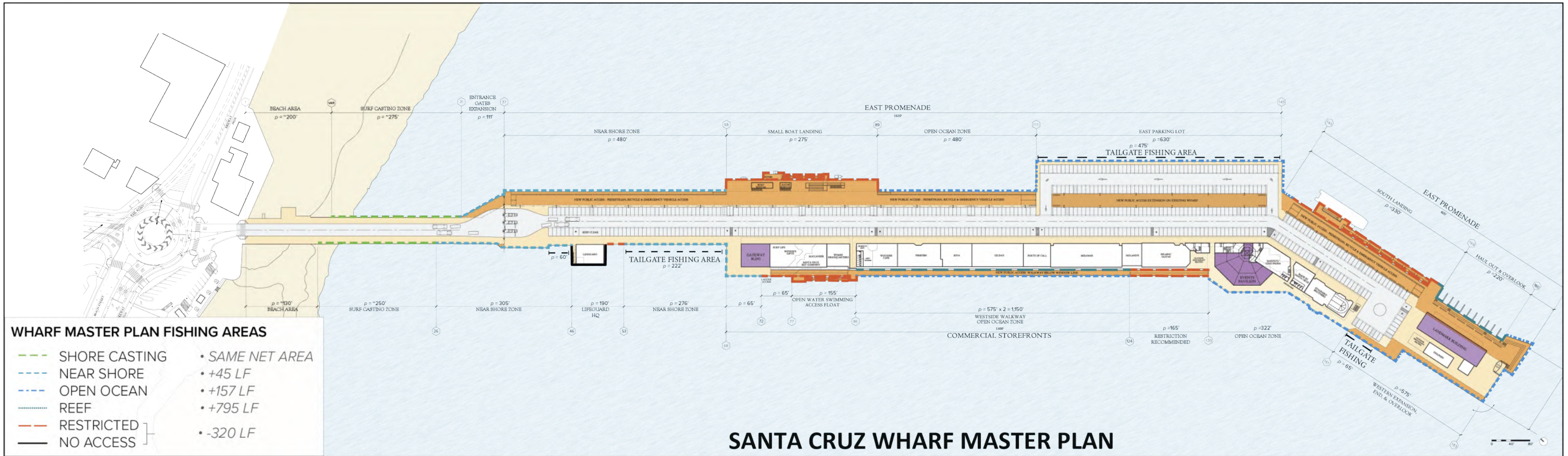
Z:\Projects\10101\10101\10101\DOCUMENT\TPO\ER

SOURCE: City of Santa Cruz

FIGURE 4.8-3

Representative Photos of Existing Wharf Fishing  
Santa Cruz Wharf Master Plan Recirculated Partial Draft EIR





SOURCE: City of Santa Cruz

FIGURE 4.8-4

Existing and Proposed Wharf Fishing Areas  
Santa Cruz Wharf Master Plan Recirculated Partial Draft EIR





Public Landing #1



Public Landing #2



Kayak Access Landing



Kayak Rentals



Boat Rental Hoist - Landing



Boat Rentals

Z:\Projects\101010\101010\DOCUMENT\101010\101010\_01.dwg

SOURCE: Moffat & Nichol and City of Santa Cruz

**FIGURE 4.8-5**

Representative Photos of Existing Wharf Boat Landings

Santa Cruz Wharf Master Plan Recirculated Partial Draft EIR



Educational Events



Sitting / Viewing at the "Commons"



Woodies on the Wharf Annual Special Event



Bocce Ball Court at the "Commons"



Special Event at the "Commons"



Surfing By the Wharf

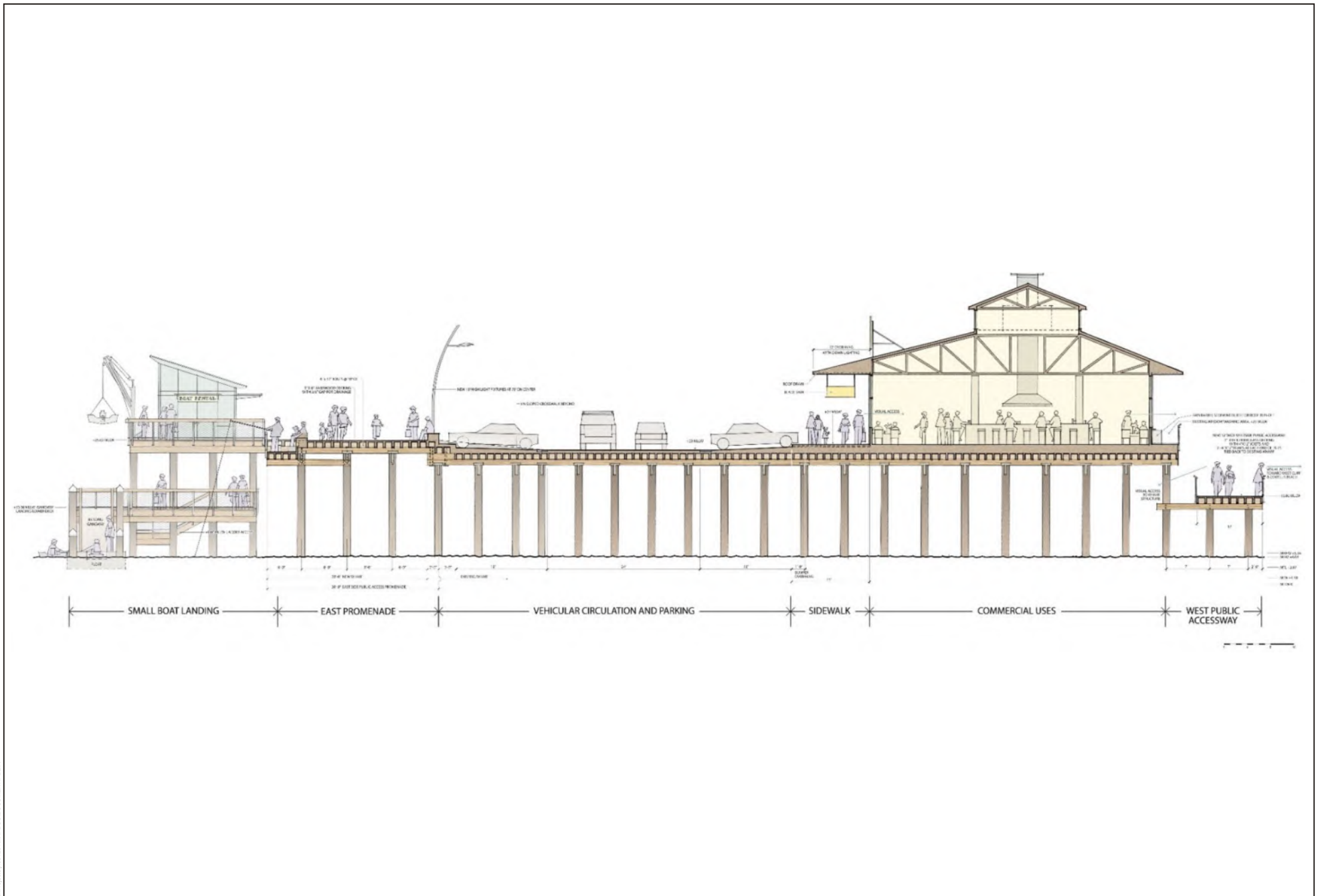
SOURCE: Moffat & Nichol and City of Santa Cruz

FIGURE 4.8-6

Representative Photos of Existing Wharf Recreational and Cultural Activities

Santa Cruz Wharf Master Plan Recirculated Partial Draft EIR



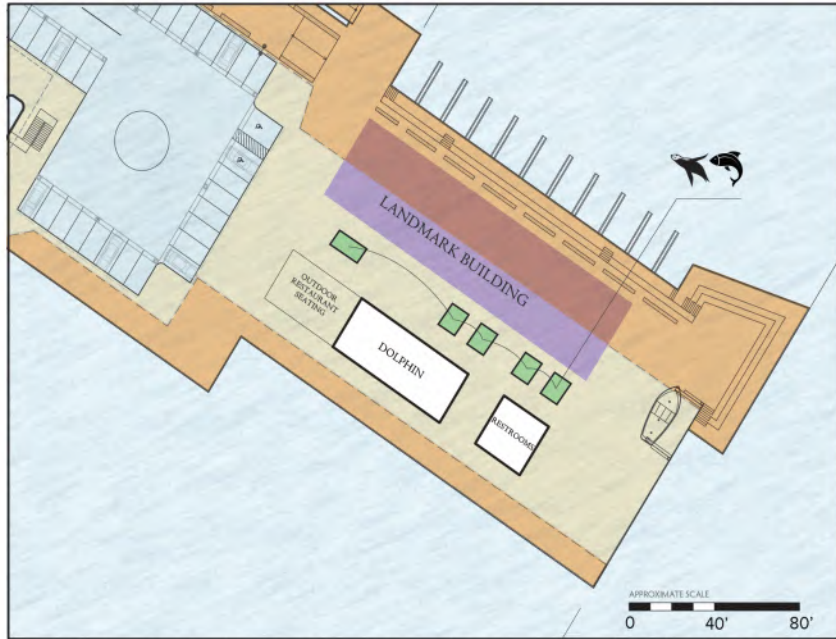


SOURCE: Moffat & Nichol

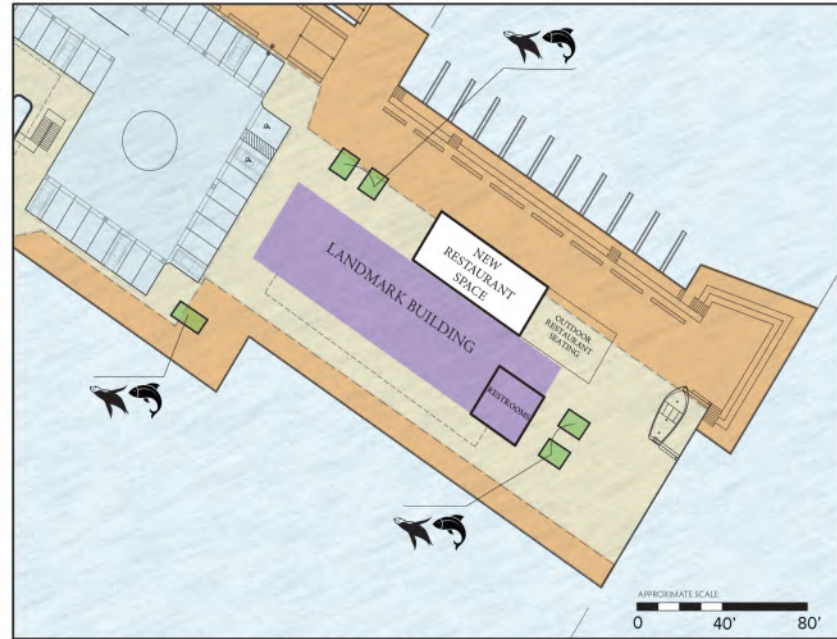


**FIGURE 4.8-7**  
**Wharf Cross Section with Proposed Improvements**  
Santa Cruz Wharf Master Plan Recirculated Partial Draft EIR

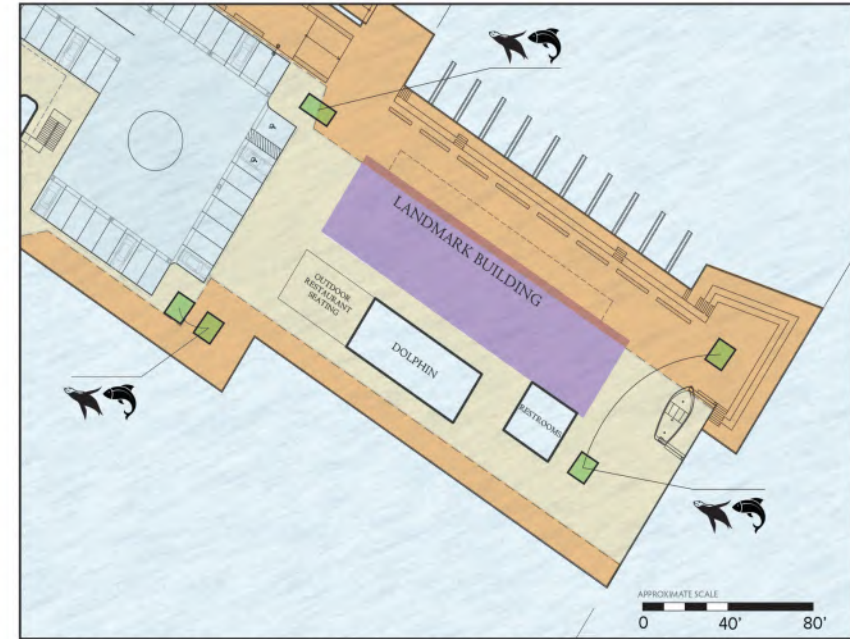




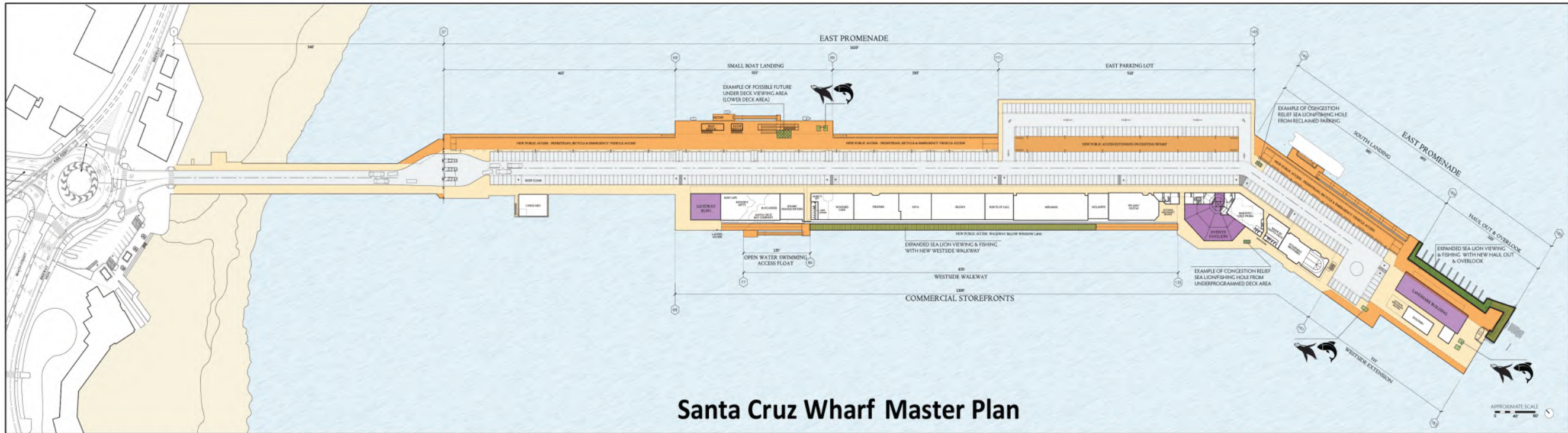
**EXAMPLE 1** - The landmark building is moved eastward to preserve the sea lion/fishing holes at their current location. Circulation areas would be narrowed, which may require relocation or the elimination of proposed seating atop the new lowered overlook. Step seating in the amphitheater and overlook would still be available. The holes would become more sheltered from winds, but outward looking views from the holes would be greatly diminished.



**EXAMPLE 2** - Repair of the Wharf beneath the Dolphin will eventually require demolition of the building. This will allow realignment and possible integration of building uses. This would free ample deck space for reconfiguration of the sea lion/fishing holes and create distinct views and experiences from each. Circulation would be maximized around the Wharf edges.



**EXAMPLE 3** - Maintaining the layout proposed in the Wharf Master Plan, the sea lion/fishing holes could be relocated around the end of the Wharf creating unique perspectives and viewsheds from each. Circulation around the sea lion/fishing holes would change, although wharf widening would ensure ADA accessibility compliance and comfortable spacing similar to existing conditions. Wind exposure may sometimes exceed current levels at certain holes.

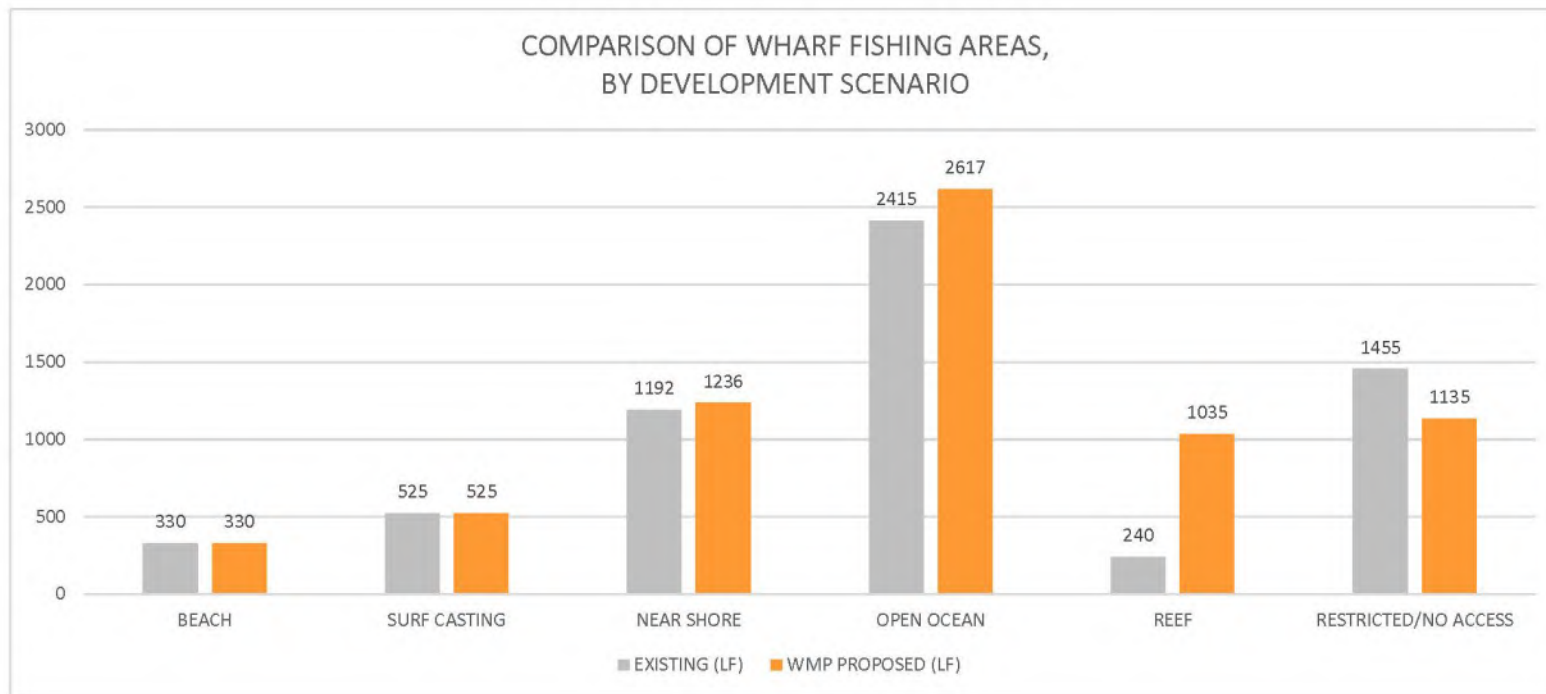


**Santa Cruz Wharf Master Plan**

**EXAMPLE 4** - Wharf master plan improvements like the Westside Walkway and Haul Out and overlook are anticipated to increase sea lion viewing and fishing opportunities dramatically. Existing sea lion/fishing holes could also be redistributed to areas around the Wharf to reduce congestion and redevelop the end of the Wharf. Additional opportunities to preserve or even expand the sea lion/fishing hole experience could also be integrated into projects as they progress to final design and permitting. For example, underprogrammed deck space could be converted to sea lion/fishing holes, parking spaces could be reclaimed during restriping, and even viewing areas beneath the deck could eventually be considered near the new landings. This approach could also be considered to maintain this type of recreational wildlife viewing and fishing during project phasing.

SOURCE: City of Santa Cruz





SOURCE: City of Santa Cruz