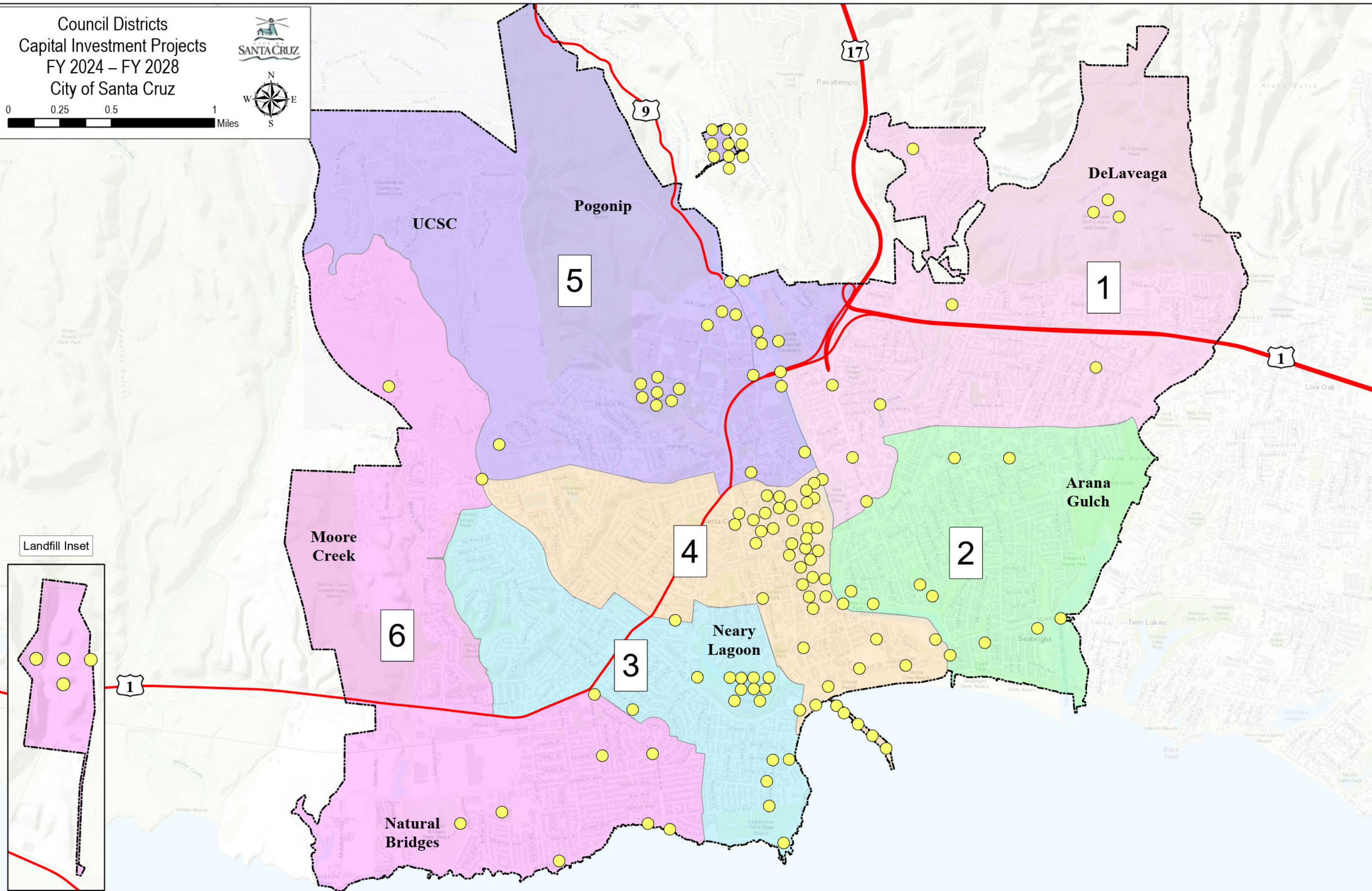
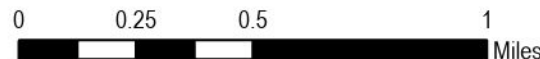
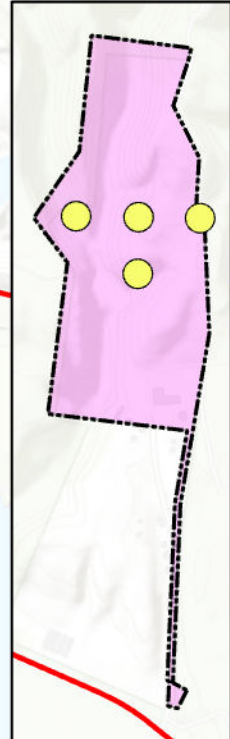


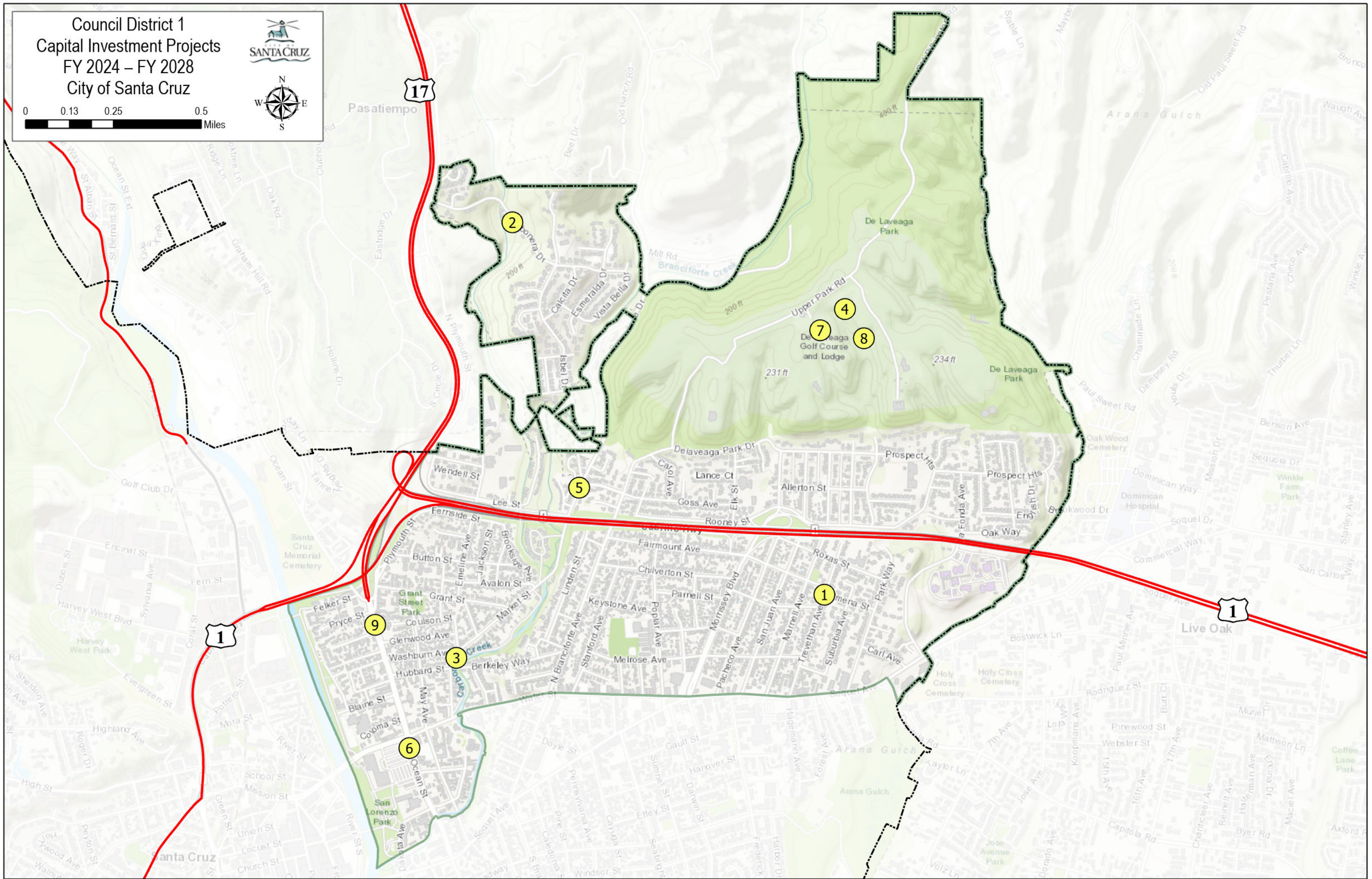
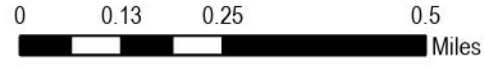
Council Districts
Capital Investment Projects
FY 2024 – FY 2028
City of Santa Cruz



Landfill Inset



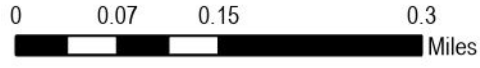
Council District 1
Capital Investment Projects
FY 2024 – FY 2028
City of Santa Cruz



District 1

| Map # | Project Name | Department | Project # |
|-------|---|------------------|-----------|
| 1 | Trevethan Ave Sewer | Public Works | c401810 |
| 2 | Isbel Pump Station Replacement | Public Works | c402105 |
| 3 | Senior Center Rehab | Parks & Rec | c302101 |
| 4 | Driving Range Improvements | Parks & Rec | c302213 |
| 5 | Branciforte Drive Retaining Wall Project | Public Works | c402211 |
| 6 | Ocean/Water Intersection Imp | Public Works | c401410 |
| 7 | DeLaveaga Park-Culvert Repair, Slope Stabilization, Drainage, and Stormwater Runoff | Parks & Rec | c302419 |
| 8 | DeLaveaga Golf Course Building Remodel | Parks & Rec | c301801 |
| 9 | Ocean Street Beautification | Non-Departmental | c512001 |

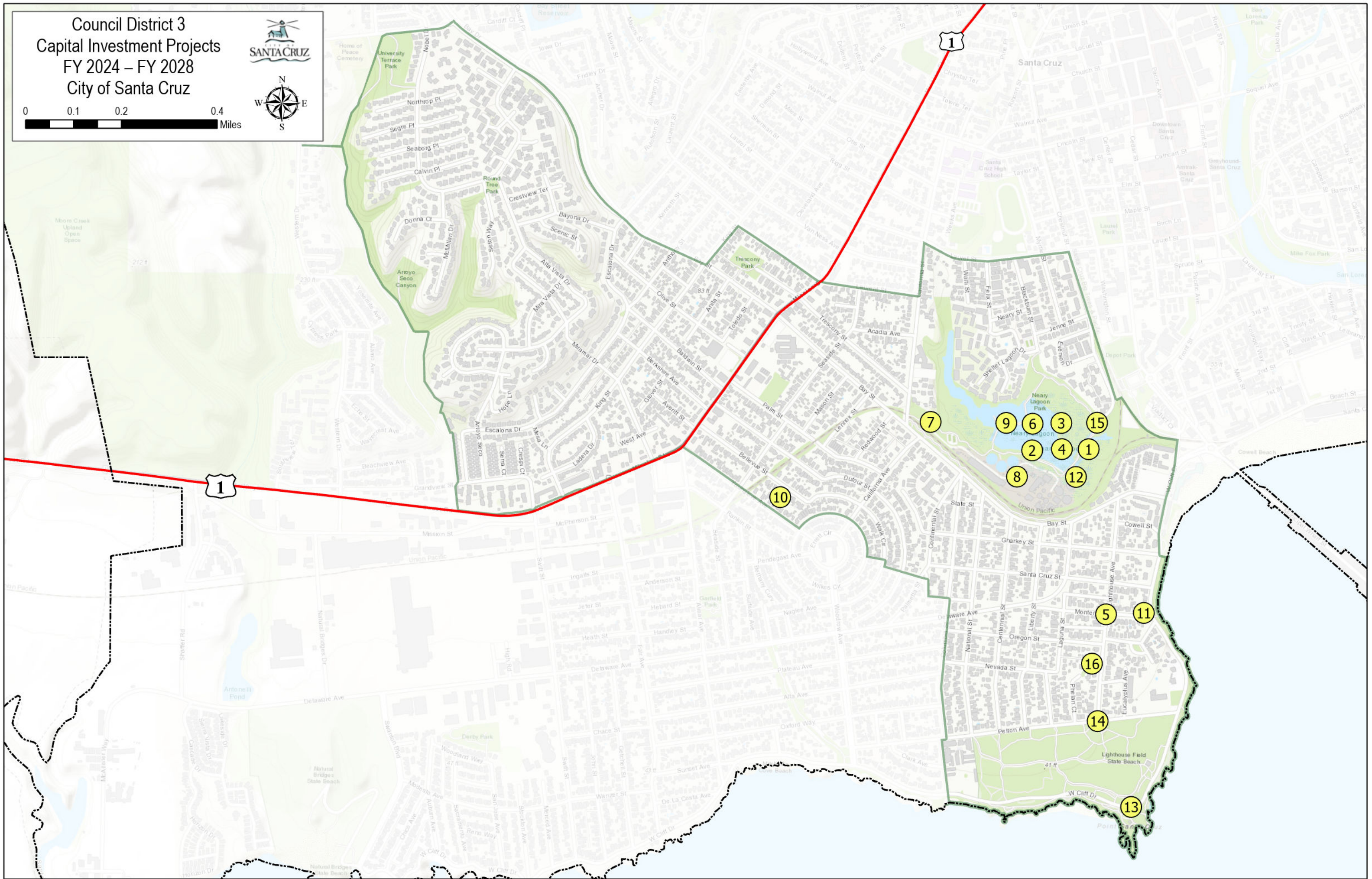
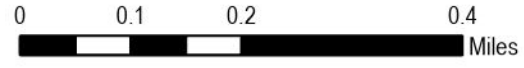
Council District 2
Capital Investment Projects
FY 2024 – FY 2028
City of Santa Cruz



District 2

| Map # | Project Name | Department | Project # |
|-------|---|------------------|-----------|
| 1 | Jessie Street Marsh | Public Works | c409669 |
| 2 | SLR Flood Control Environ Rest Project | Public Works | c409512 |
| 3 | SLR Mouth and Lagoon Mgmt. Plan | Non-Departmental | c601403 |
| 4 | Murray St Bridge Retrofit | Public Works | c409321 |
| 5 | SL River Sanitary Sewer Siphon | Public Works | c401315 |
| 6 | MB Sanctuary Scenic Trail (Rail Trail) – Segments 8 & 9 | Public Works | c401804 |
| 7 | Branciforte Measure S Facility Remodel | Public Works | c351801 |
| 8 | Branciforte Creek Channel Repair and Maintenance | Public Works | c401313 |
| 9 | Ocean View Park Redesign | Parks & Rec | c302236 |
| 10 | Sewer Realignment Project | Public Works | c402203 |
| 11 | Riverside Gardens Park Pathway | Parks & Rec | c302405 |
| 12 | Fire Station 2 Rear Expansion | Fire | c212302 |

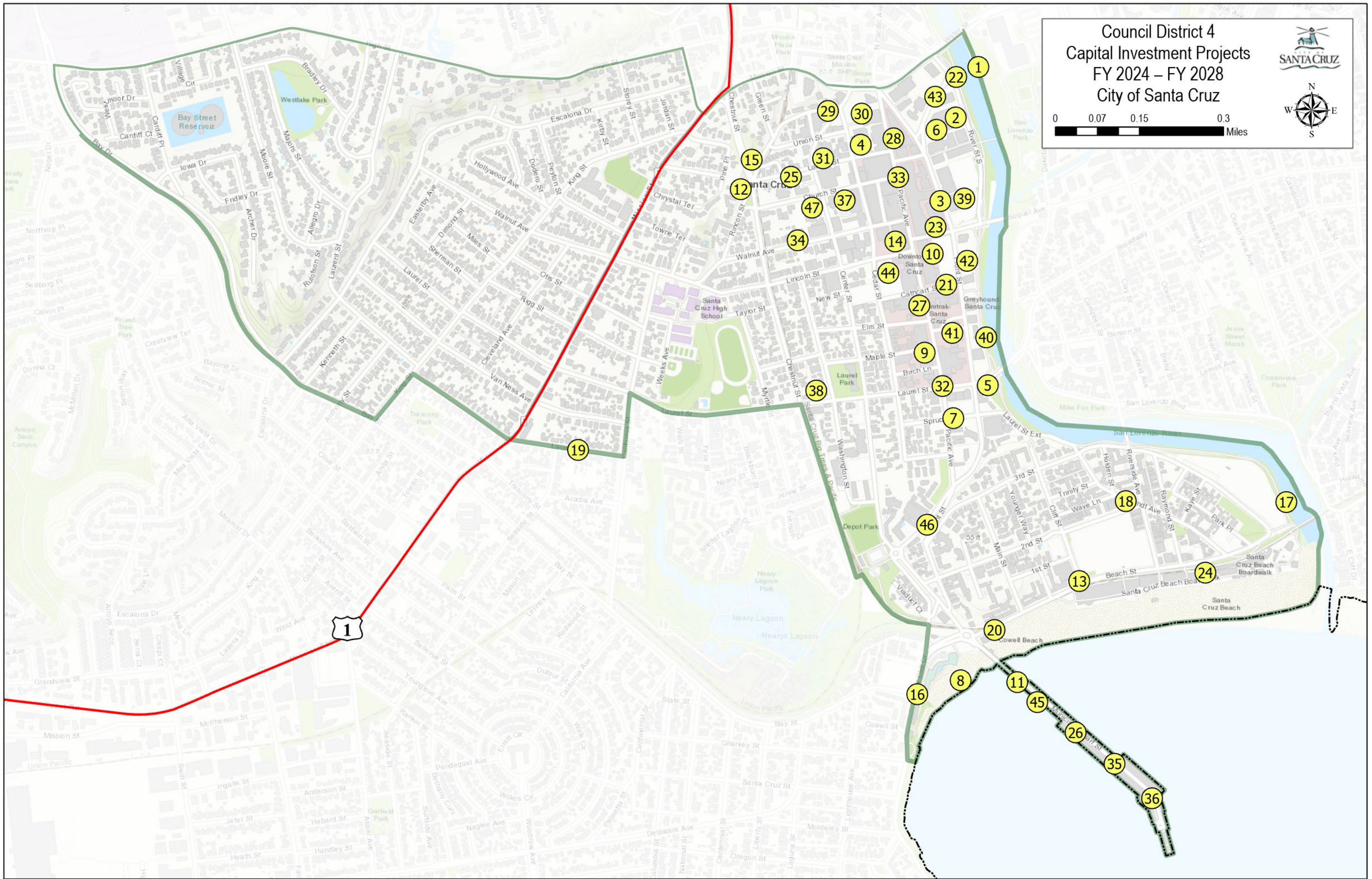
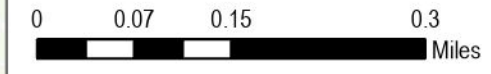
Council District 3
Capital Investment Projects
FY 2024 – FY 2028
City of Santa Cruz



District 3

| Map # | Project Name | Department | Project # |
|-------|--|--------------|-----------|
| 1 | WWTF Infrastructure and Major Equipment Study | Public Works | c401706 |
| 2 | WWTF Upgrade Digester Equipment | Public Works | c401607 |
| 3 | WWTF Ultraviolet Disinfection System Replacement | Public Works | c401504 |
| 4 | WWTF Laboratory Modernization | Public Works | c401608 |
| 5 | Monterey St and Lighthouse Ave Sewer | Public Works | c401907 |
| 6 | WWTF Water Piping Rehab | Public Works | c401407 |
| 7 | Neary Lagoon Park Rehab/Restoration | Public Works | m409668 |
| 8 | WWTF Equipment Replacement | Public Works | m409659 |
| 9 | WWTF Electrical System | Public Works | c401405 |
| 10 | MB Sanctuary Scenic Trail (Rail Trail) - Segment 7 | Public Works | c401413 |
| 11 | West Cliff Stair Repair | Public Works | m401402 |
| 12 | City Headworks Replacement | Public Works | c402204 |
| 13 | West Cliff Design & Improvement Standards | Public Works | c302240 |
| 14 | Pelton Ave Pump Station Generator | Public Works | c402104 |
| 15 | Neary Lagoon Park Rehab-Maint. (Annual) | Public Works | m409668 |
| 16 | Lighthouse Ave Park Fencing | Parks & Rec | c302407 |

Council District 4
Capital Investment Projects
FY 2024 – FY 2028
City of Santa Cruz

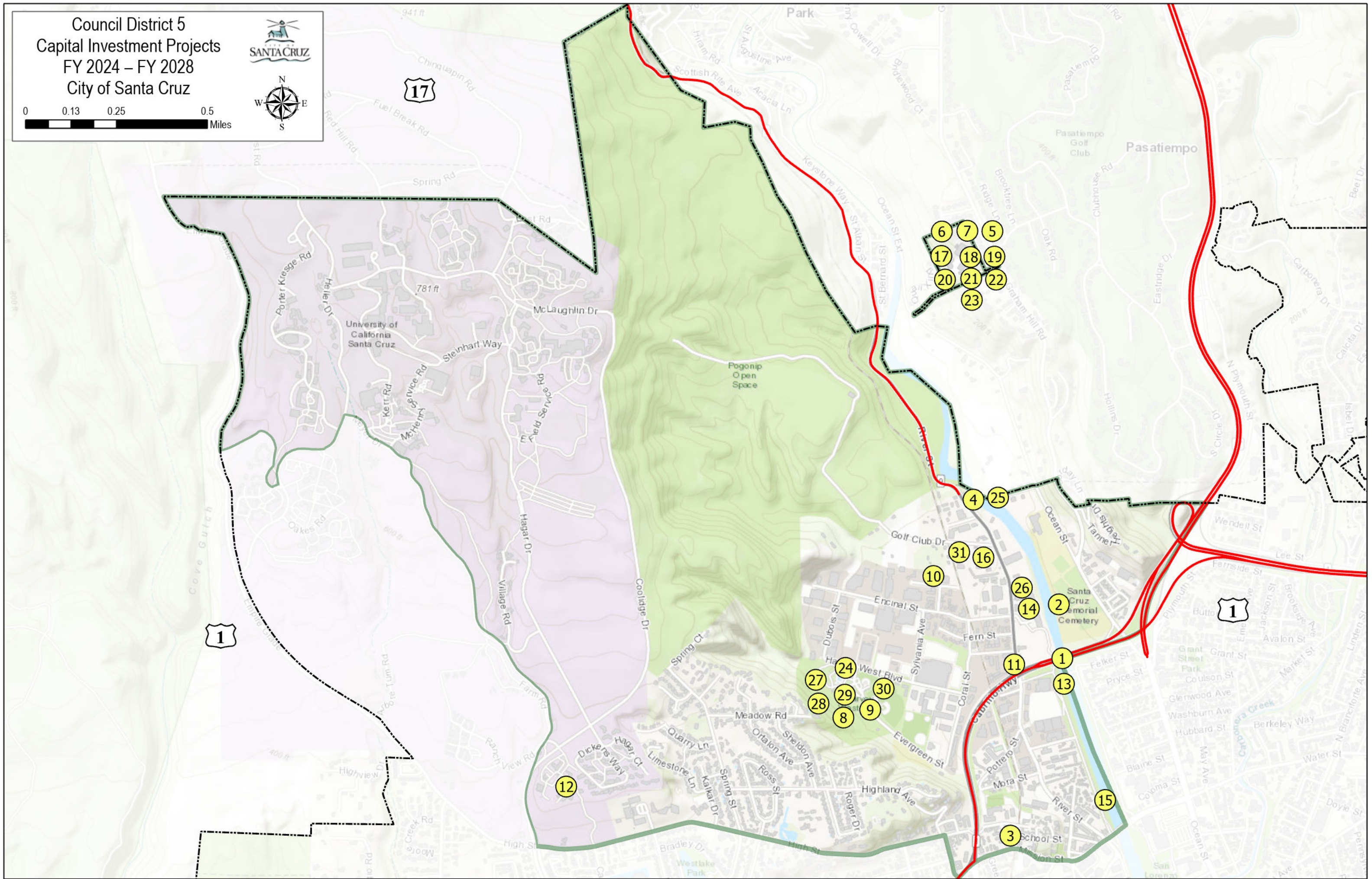
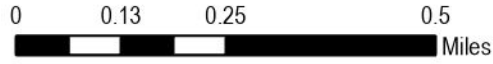


District 4

| Map # | Project Name | Department | Project # |
|-------|--|----------------------|-----------|
| 1 | San Lorenzo River Levee Storm Drain Maintenance | Public Works | c401314 |
| 2 | Parking Equipment Replacement - River Front Garage | Public Works | c401703 |
| 3 | Parking Equipment Replacement - Soquel/ Front Garage | Public Works | c401704 |
| 4 | Parking Equipment Replacement - Locust Garage | Public Works | c401705 |
| 5 | Downtown SLR Drainage System Assessment | Public Works | c401707 |
| 6 | River-Front Garage Elevator | Public Works | c401509 |
| 7 | Front-Spruce-Pacific-Sewer Main Rehab | Public Works | c401606 |
| 8 | Cowell Beach Water Quality Project | Public Works | c401614 |
| 9 | Downtown Bike Locker Replacement Program | Public Works | c401812 |
| 10 | Trolley Acquisition | Economic Development | c511704 |
| 11 | Wharf Rehabilitation Projects | Economic Development | c511502 |
| 12 | Broadband Infrastructure | Economic Development | c511501 |
| 13 | Citywide Sign Program Phase II | Economic Development | r521205 |
| 14 | Downtown Alley Improvements | Economic Development | c511703 |
| 15 | City Hall Parking Lot Repairs | Non-Departmental | c601301 |
| 16 | Bay - West Cliff Intersection Improvements | Public Works | c401905 |
| 17 | SLR Lagoon MGMT | Public Works | c601403 |
| 18 | Riverside Ave Underground Utility | Economic Development | c401208 |
| 19 | Laurent St Sewer | Public Works | c401809 |
| 20 | Beach Street Restrooms | Parks & Rec | c301913 |
| 21 | Farmers Market Structure | Economic Development | c511901 |
| 22 | San Lorenzo River Levee Storm Drain Maintenance | Public Works | c401314 |
| 23 | Elevator Controls Upgrade | Non-Departmental | c402004 |
| 24 | Beach/Cliff Traffic Signal | Public Works | c401303 |
| 25 | Space Utilization Design for City Hall | Non-Departmental | c101701 |
| 26 | Miramar Demolition and Wharf Piling Replacement | Parks & Rec | c511705 |
| 27 | Downtown Intersection Improvements | Public Works | c401903 |
| 28 | Downtown Parking Garages Signs and Paint Upgrade | Public Works | c402107 |
| 29 | Union/Locust Building Generator | Water | c702107 |
| 30 | Locust Garage Improvements | Public Works | c402106 |

| Map # | Project Name | Department | Project # |
|--------------------------------|---|------------------|-----------|
| District 4 (continued): | | | |
| 31 | ASR - Mid County Existing Infrastructure | Non-Departmental | c702101 |
| 32 | Pacific Avenue Beautification | Non-Departmental | c512101 |
| 33 | Downtown Library Affordable Housing Project | Non-Departmental | c512002 |
| 34 | Rescue Unit | Fire | c212203 |
| 35 | Wharf Railing Improvements | Parks & Rec | c302003 |
| 36 | Facility Improvements | Parks & Rec | c302214 |
| 37 | Civic Roof Repair | Parks & Rec | c302204 |
| 38 | Londen Nelson Community Center - Senior Studio Improvements | Park & Rec | c302241 |
| 39 | Electric Vehicle Charging Station Expansion in Public City Parking Lots | Public Works | c402214 |
| 40 | Pacific Station South | Non-Departmental | c512202 |
| 41 | Pacific Station North | Non-Departmental | c512201 |
| 42 | Electric Vehicle Charging Station Expansion in Public City Parking Lots | Public Works | c402214 |
| 43 | Electric Vehicle Charging Station Expansion in Public City Parking Lots | Public Works | c402214 |
| 44 | Electric Vehicle Charging Station Expansion in Public City Parking Lots | Public Works | c402214 |
| 45 | Lifeguard Headquarters Improvements and Fireboat and Water Rescue Craft Landing | Fire | c302413 |
| 46 | Lower Pacific Avenue Medians | Public Works | c302310 |
| 47 | Civic Access and Safety Improvements | Parks & Rec | c302418 |


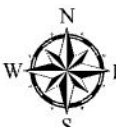
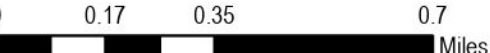
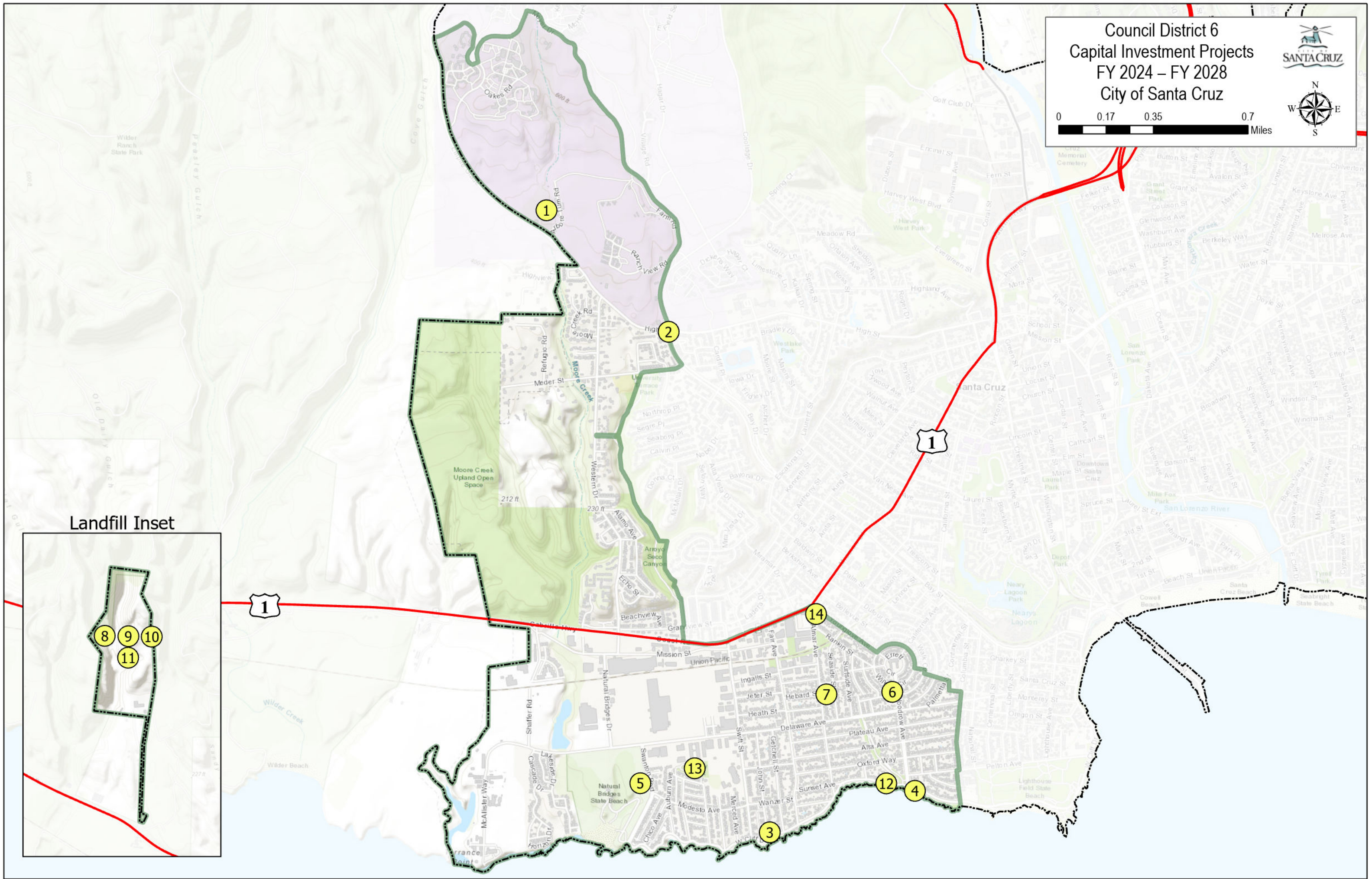
Council District 5
Capital Investment Projects
FY 2024 – FY 2028
City of Santa Cruz



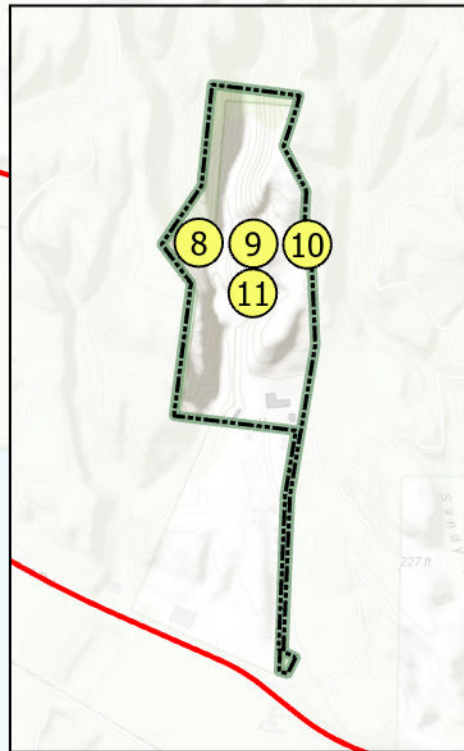
District 5

| Map # | Project Name | Department | Project # |
|-------|---|----------------------|-----------|
| 1 | Route 1 Bridge Replacement | Public Works | c401402 |
| 2 | SLR Lagoon MGMT | Public Works | c601403 |
| 3 | Mission Street Hill Utility Undergrounding | Public Works | c401004 |
| 4 | Pogonip Creek Sedimentation Removal | Public Works | c401306 |
| 5 | Aquifer Storage and Recovery | Water | c701609 |
| 6 | WTP Concrete Tank Assessment and Rehabilitation | Water | c701501 |
| 7 | WTP Flocculator Mixers | Water | c701502 |
| 8 | Harvey West Ballfield Lighting | Parks & Rec | c302218 |
| 9 | Harvey West Park Infrastructure Improvements | Parks & Rec | c302238 |
| 10 | Corp Yard Stormwater Pollution Prevention Plan and Implementation | Non-Departmental | c601701 |
| 11 | Route 1/9 Imp | Public Works | c400805 |
| 12 | UCSC City Transportation Improvements | Public Works | c401008 |
| 13 | SLR Lagoon MGMT | Public Works | c601403 |
| 14 | Tannery Landscaping | Economic Development | c511706 |
| 15 | San Lorenzo River Levee Storm Drain Maintenance | Public Works | c401314 |
| 16 | Solar PV Expansion at Corp Yard | Public Works | c101901 |
| 17 | Felton Diversion Pump Station Assessment | Water | c701906 |
| 18 | Recycled Water Feasibility Study | Water | c701611 |
| 19 | Beltz WTP Filter Rehabilitation | Water | c702108 |
| 20 | GHWTP Gate Entrance Upgrades | Water | c702109 |
| 21 | Newell Creek Pipeline Felton/Graham Hill WTP | Water | c702105 |
| 22 | GHWTP Facilities Improvement Project | Water | c700025 |
| 23 | GHWTP SCADA Radio System Replacement | Water | c702201 |
| 24 | Harvey West Clubhouse Access | Parks & Rec | c302120 |
| 25 | Tait Diversion Rehab/Replacement | Water | c701903 |
| 26 | Tannery Dance & Performance Building | Economic Development | c512204 |
| 27 | Redesign Harvey West Park | Parks & Rec | c302421 |
| 28 | Harvey West Park-Clubhouse Picnic Area Fence | Parks & Rec | c302401 |
| 29 | Harvey West Park-Resurfacing Friendship Gardens and Upper Glen Group Picnic Areas | Parks & Rec | C302402 |
| 30 | HW Pool-Repairs and Upgrades | Parks & Rec | c302313 |
| 31 | Corp Yard Site Security Upgrades | Public Works | c402402 |

Council District 6
 Capital Investment Projects
 FY 2024 – FY 2028
 City of Santa Cruz

Landfill Inset



District 6

| Map # | Project Name | Department | Project # |
|-------|---|--------------|-----------|
| 1 | Recoat University Reservoir No. 4 | Water | c701505 |
| 2 | Bay/High Intersection | Public Works | c401103 |
| 3 | West Cliff Drive Multi-use Maintenance | Public Works | m400819 |
| 4 | West Cliff Drive Revetment Repair | Public Works | c401501 |
| 5 | Swanton Blvd Multi-use Trail Connector | Public Works | c401805 |
| 6 | Garfield Park Measure S Facility Remodel | Public Works | c351802 |
| 7 | Garfield Park Renovation | Parks & Rec | c302235 |
| 8 | Gas Probe Remediation | Public Works | c401908 |
| 9 | Landfill Master Plan Development | Public Works | c401909 |
| 10 | Dimeo Lane Paving and Storm Drain | Public Works | c401312 |
| 11 | Recycling Center Storm Water Quality Improvements | Public Works | c402111 |
| 12 | West Cliff Design & Improvement Standards | Public Works | c302408 |
| 13 | Sgt. Derby Park Playground Renovation | Parks & Rec | c302404 |
| 14 | Generator for Fire Station #3 | Fire | c212303 |

Unmapped

| Project Name | Department | Project # |
|---|------------------|-----------|
| Aerators at Loch Lomond | Water | c701706 |
| Bridge Maintenance | Public Works | m401302 |
| Laguna Creek Diversion Retrofit | Water | c701801 |
| Public Facilities - Maintenance/CEC Energy Saving Projects | Non-Departmental | m609195 |
| River Bank Filtration | Water | c701806 |
| Security Camera & Building Access Upgrades | Water | c701704 |
| Water Supply Augmentation Strategy Implementation | Water | c701705 |
| City Arterial and Collector Street Reconstruction and Overlay | Public Works | c400809 |
| City Residential and Collector Street Reconstruction and Overlay | Public Works | c400810 |
| Sewer System Improvements | Public Works | c401511 |
| Citywide Traffic Signal Controller Upgrade | Public Works | c401602 |
| Catch Basin Replacement Program | Public Works | c401610 |
| Storm Water Trash Capture Program | Public Works | c401701 |
| CMP Storm Drain Pipe Replacement | Public Works | c401709 |
| Main Replacements- Engineering Section | Water | c700002 |
| Water Main Replacements -Outside Agency | Water | c700003 |
| Main Replacements- Distribution Section | Water | c701507 |
| Meter Replacement Project | Water | c701603 |
| ASR Planning | Water | c701609 |
| Water Program Administration | Water | c701901 |
| Facility & Infrastructure Improvements | Water | c701907 |
| NCD I/O Replacement Project | Water | c701606 |
| Distribution System Water Quality Improvements | Water | c702001 |
| Homeless Infrastructure Projects | | c102101 |
| Information Technology Infrastructure | | c152001 |
| Information Technology Applications | | c152002 |
| FEMA Levee Certification | Public Works | c402112 |
| CMMS Upgrade | Public Works | c402205 |
| Unsignalized Crossing Improvement Project | Public Works | c402215 |
| Advance Dilemma Zone Detection and Retroreflective Signal Back Plate Upgrades | Public Works | c402216 |
| Water Program Management Reserve | Water | c702003 |
| CMMS Software Replacement for Water Dept | Water | c702202 |
| Walkway Improvements in Neighborhood Parks | | c302406 |
| Water Conservation & Irrigation System Improvements | | c302223 |
| Water Conservation and Irrigation System Improvements | | c302403 |
| Traffic Calming Program (Annual) | Public Works | c402404 |
| Sidewalk/Access Ramp | Public Works | c409452 |
| Santa Cruz Regional Public Safety Training Center | | c212402 |
| Parks Facilities Security Improvements | | c302420 |
| Intertie 1-Santa Cruz-Scotts Valley | Water | c702205 |

| Map # | Project Name | Department | Project # |
|------------------------------|--|--------------|-----------|
| Unmapped (continued): | | | |
| | Food Waste Pre-processing System Improvement Project | Public Works | c402401 |
| | Escalona Avenue Storm Drain Pipe replacement | Public Works | c402302 |
| | Branciforte Streambank Restoration | Water | c702304 |
| | Brackney Landslide Area Pipeline Risk Reduction | Water | c702002 |
| | Beltz 12 Ammonia Removal | Water | c702203 |
| | ASR - Mid County New Wells | Water | c702203 |
| | ASR - Santa Margarita Groundwater Basin | Water | c702102 |