



CITY OF SANTA CRUZ  
809 Center Street  
Santa Cruz, California 95060

## TRANSPORTATION AND PUBLIC WORKS COMMISSION

### Regular Meeting

September 18, 2023

### 6:00 P.M. GENERAL BUSINESS AND MATTERS OF PUBLIC INTEREST, COUNCIL CHAMBERS

Commission meetings are audio recorded and will be posted to the Advisory Body webpage following the meeting.

Written material for every item listed on the agenda is available for review at the Public Works office, 809 Center Street, Room 201, and online at [www.cityofsantacruz.com](http://www.cityofsantacruz.com).

Time limits set by Commission Policy are guidelines. Unless otherwise specified, procedures for all items, are:

- Oral staff report
- Public comment - 3 minutes each; maximum total time may be established by the Presiding Officer at the beginning of an agenda item
- Commission deliberation and action

No action will be taken on items listed under Oral Communications, Announcements, Presentations, and Information Items

Appeals - Any person who believes that a final action of this advisory body has been taken in error, that decision may or may not be appealable to the City Council. Appeals must be in writing, setting forth the nature of the action and the basis upon which the action is considered to be in error, and addressed to the City Council in care of the City Clerk Administrator. Appeals must be received by the City Clerk Administrator within ten (10) calendar days following the date of the action from which such appeal is being taken. An appeal must be accompanied by a fifty dollar (\$50) filing fee.

#### Additional Information

Visit the City's Web Site at [www.cityofsantacruz.com](http://www.cityofsantacruz.com) with links including City Advisory Body Meeting Agendas and Minutes, Advisory Body Information, and the Santa Cruz Municipal Code.

A copy of the full TPWC agenda, agenda reports and attachments which are included in the meeting packet, are available for review at the Central Library on Church Street no later than three (3) days prior to the meeting date.

The City of Santa Cruz does not discriminate against persons with disabilities. Out of consideration for people with chemical sensitivities, we ask that you attend fragrance free. If you wish to attend this public meeting and will require assistance, such as an interpreter for American Sign Language, Spanish, or other special equipment, please call the Public Works Office at (831) 420-5160 or e-mail [TPWC@santacruzca.gov](mailto:TPWC@santacruzca.gov) at least five (5) days in advance so that arrangements for such assistance can be accommodated. The Cal-Relay system number: 1-800-735-2922.

Any writing related to an agenda item for the open session of this meeting distributed to the TPWC less than 72 hours before this meeting is available for inspection at the Public Works Department at 809 Center Street, Room 201. These writings will also be available for review at the TPWC meeting in the Council Chambers.

## Transportation and Public Works Commission (TPWC)

6:00 PM

Call to Order

Roll Call

Absent with Notification

Statements of Disqualification

Oral Communications

Announcements

Presentations

Approval of Minutes

1. Approval of Minutes for the August 21, 2023 Transportation and Public Works Commission Meeting.

Motion that the Transportation and Public Works Commission approve the August 21, 2023 - Transportation and Public Works Commission Draft Minutes.

Consent

General Business

2. METRO Interim Downtown Transit Center Plan

Motion that the Transportation and Public Works Commission review, provide comments, and recommend that the City Council approve the METRO Interim Downtown Transit Center Plan.

Information Items

Subcommittee/Advisory Body Oral Reports

Items Initiated by Members for Future Agendas

**Adjournment**



## Transportation and Public Works Commission

Regular Meeting

**DRAFT Minutes**

6:00 p.m., Monday, August 21, 2023

Council Chambers

**Call to Order: 6:00 P.M.**

**Roll Call:** Chair Ron Goodman, Vice-Chair Ryan Meckel; Commissioners: Candace Brown, Robert Orrizzi, Kyle Kelley, and Zennon Ulyate-Crow.

**Absent with Notification:** Commissioner Susan Gilchrist.

**Absent without Notification:** None.

**Statements of Disqualification:** None.

**Oral Communications:**

At 6:01 P.M., Chair Goodman opened oral communications. There were no speakers and at 6:01 P.M., Chair Goodman closed oral communications.

**Announcements:**

Director of Public Works Nathan Nguyen gave an update on ongoing Public Works projects, including the Ocean Street Pavement rehabilitation project and the Bay Street Protected Bike Lane Project.

N. Nguyen additionally updated the Commission on the Highway Safety improvement Cycle 10 Crossing improvement. Public Works will be installing Rapid Flashing Beacons at several pedestrian crossings; installation will begin early September.

**N. Nguyen introduced the Westcliff Drive Data Collection Presentation at 6:03 P.M.**

Chair Goodman expressed excitement for the speed at which the Bay Street Protected Bike Lanes Project has progressed.

**Presentations:**

**At 6:05 P.M. The Commission heard the West Cliff Drive Traffic Data Presentation.**

Transportation Planner Claire Gallogly and Transportation Manager Matt Starkey gave

a presentation of Traffic Data collected from the neighborhoods surrounding Westcliff Drive and answered commissioner's questions.

**At 6:26 P.M., Chair Goodman opened public comment and the following people spoke:**

Don Iglesias  
Ken Stoner  
Waj Berenstein  
Terry Casper  
Tom Powers

**At 6:40 P.M., Chair Goodman closed public comment.**

**Approval of Minutes:**

1. Approval of Minutes for the June 26, 2023 Transportation and Public Works Commission Meeting.

**Item 1 was heard at 6:03 P.M.**

**MOTION:** Commissioner Orrizzi moved, seconded by Commissioner Kelley, to approve the minutes of the June 26, 2023 Transportation and Public Works Commission meeting with an amendment to the minutes language on item 2.

**ACTION:** The motion carried with the following vote:

**AYES:** Chair Goodman, Vice-Chair Meckel, Commissioners: Brown, Orrizzi, Kelley, and Ulyate-Crow.

**NOES:** None.

**ABSENT:** Commissioner Gilchrist.

**DISQUALIFIED:** None.

**Consent:** None.

**General Business:**

3. Traffic Calming Toolkit

Transportation Planner C. Gallogly and Transportation Manager M. Starkey presented the proposed Traffic Calming Toolkit and answered commissioners' questions.

**At 7:05 P.M., Chair Goodman opened public comment and the following people spoke:**

Jose Within  
Kathy Stephani  
Terry Casper

Megan Dawson  
Dave Hartley

**At 7:14 P.M., Chair Goodman closed public comment.**

**MOTION:** Commissioner Kelley moved, seconded by Vice- Chair Meckel, that the Transportation and Public Works Commission recommend that the City Council approve the Traffic Calming Toolkit with Commission feedback.

**ACTION:** The motion carried with the following vote:

**AYES:** Chair Goodman, Vice-Chair Meckel, Commissioners: Brown, Orrizzi, Kelley, and Ulyate-Crow.

**NOES:** None.

**ABSENT:** Commissioner Gilchrist.

**DISQUALIFIED:** None.

**Informational Items:**

3. BCycle Bike Share Program Update

Transportation Planner C. Gallogly gave a presentation and answered commissioners questions.

**Subcommittee/Advisory Body Oral Reports:** None.

**Items Initiated by Members for Future Agendas:** None.

**Adjournment:** 8:53 P.M.



## Transportation and Public Works Commission AGENDA REPORT

**DATE:** 09/06/2023

**AGENDA OF:** 09/18/2023

**DEPARTMENT:** Public Works

**SUBJECT:** METRO Interim Downtown Transit Center Plan

---

**RECOMMENDATION:** Motion that the Transportation and Public Works Commission review, provide comments, and recommend that the City Council approve the METRO Interim Downtown Transit Center Plan.

---

**BACKGROUND:** The Santa Cruz Metropolitan Transportation District (METRO) provides environmentally sustainable transportation to Santa Cruz County. METRO operates county-wide fixed-route and Highway 17 commuter service from its Santa Cruz Pacific Station complex with connections to Santa Clara County and Monterey Salinas Transit at METRO's Watsonville Transit Center. METRO operates a fleet of 94 buses on at least 24 fixed routes and 32 paratransit vehicles.

The METRO Pacific Station complex in the city of Santa Cruz is slated for demolition and redevelopment during the period February 2024 through February 2026. Current METRO operations at Pacific Station includes 10 active bus bays, 14 layover bus bays, a site-specific circulation system, and facilities for public/customer service interaction, operators, and security staff.

Per the terms of the 2020 Memorandum of Understanding between the City of Santa Cruz (City) and METRO, the City is coordinating the development of a METRO Downtown Transit Center Interim Operations Plan (Plan). The Plan will design temporary traffic circulation patterns, determine associated traffic and sidewalk revisions, and identify locations for ancillary facilities to support METRO's operations during the redevelopment of Pacific Station. Key elements include establishing a clockwise traffic flow around the area bounded by Soquel Ave., Front St., River St. and River St. South, the removal of the traffic island at the River St. South/Front St. intersection to facilitate METRO bus movements, general traffic restriping, and conversion of River St. South to one-way southbound. The Plan will subsequently be released for bid to construct the operational design elements so that the demolition and redevelopment of the METRO Pacific Station complex may proceed.

The METRO Interim Downtown Transit Center Operations plan will utilize curbside space on Soquel Ave., Front St, River St. and River St. South to create two new bus stops and create multiple bus layover spaces. On Front Street and River St., the plan will create a shared bus/bike lane adjacent to the curb to facilitate bus movements, bus layover, bus station service, and bicycle movements. METRO plans to board and disembark passengers at two bus stops, located at

the Front St/Cooper St intersection and near the midblock crossing on River St South. Layover spaces will be generally used between 5am and midnight.

To install the shared bus/bike lane, there will need to be a reduction of on-street parking. Existing loading curbside spaces will be maintained. A description of these parking changes is detailed in the attached table.

Economic Development and Housing Staff will provide project and contract management services and Public Works staff will provide technical support and inspection services.

**DISCUSSION:** In June 2023 ED staff issued a Request for Qualifications for METRO Interim Downtown Transit Center Operations Plan Design Services. The most qualified respondent was identified as Kimley-Horn and Associates Inc. (Kimley-Horn). Kimley-Horn offers technical expertise, local implementation experience and development knowledge, and has partnered with the City and METRO on a wide variety of projects including the Front Street Intersection Improvements, the Santa Cruz Warriors Arena Specific Plan, and the Downtown Plan Expansion project. A Professional Services Agreement was subsequently executed between the City and Kimley-Horn for METRO Interim Downtown Transit Center Operations Plan design services.

Construction of the Plan's elements is scheduled for the period December 11, 2023 through February 1, 2024. Upon completion of METRO's new transit center at Pacific Station, traffic patterns will be restored to pre-project conditions.

The METRO Interim Downtown Transit Center Operations Plan is consistent with the Health in All Policies pillars of equity, public health, and sustainability. The design elements generated by the Plan and subsequently constructed will provide for continued METRO activities during the Pacific Station redevelopment, will provide infrastructure for vitally needed transportation options, and will ultimately foster sustainability of transit operations.

Transit improvements are consistent with both the General Plan and Climate Action Plan. The Climate Action Plan specifically prioritizes Transit over parking as is implemented in this plan.

**DISCUSSION:** In June 2023 ED staff issued a Request for Qualifications for METRO Interim Downtown Transit Center Operations Plan Design Services. The most qualified respondent was identified as Kimley-Horn and Associates Inc. (Kimley-Horn). Kimley-Horn offers technical expertise, local implementation experience and development knowledge, and has partnered with the City and METRO on a wide variety of projects including the Front Street Intersection Improvements, the Santa Cruz Warriors Arena Specific Plan, and the Downtown Plan Expansion project. A Professional Services Agreement was subsequently executed between the City and Kimley-Horn for METRO Interim Downtown Transit Center Operations Plan design services.

Construction of the Plan's elements is scheduled for the period December 11, 2023 through February 1, 2024. Upon completion of METRO's new transit center at Pacific Station, traffic patterns will be restored to pre-project conditions.

The METRO Interim Downtown Transit Center Operations Plan is consistent with the Health in All Policies pillars of equity, public health, and sustainability. The design elements generated by the Plan and subsequently constructed will provide for continued METRO activities during the



Pacific Station redevelopment, will provide infrastructure for vitally needed transportation options, and will ultimately foster sustainability of transit operations.

Transit improvements are consistent with both the General Plan and Climate Action Plan. The Climate Action Plan specifically prioritizes Transit over parking as is implemented in this plan.

**FISCAL IMPACT:** Costs of execution of the Interim Downtown Transit Center plans are funded by METRO.

**Prepared By:**  
Norman F. Daly  
Development Manager

**Submitted By:**  
Bonnie Lipscomb  
Director of Economic  
Development and Housing

**Approved By:**  
Nathan Nguyen P.E.  
Director of Public Works

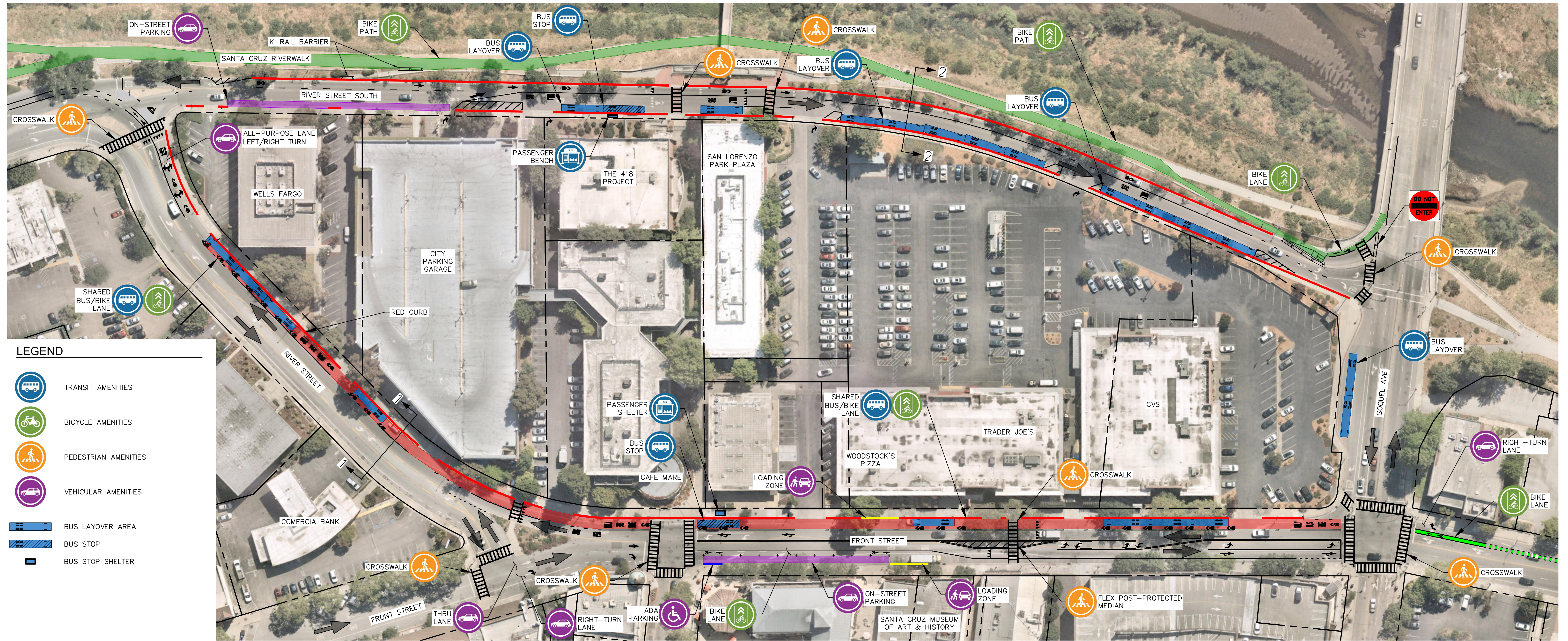
**ATTACHMENTS:**

1. METRO INTERIM DOWNTOWN TRANSIT CENTER PLAN - TABLE.DOCX
2. OPERATIONS PLAN\_9-1.PDF
3. 2023-09-01 - SC METRO INTERIM OPS PLAN - DRAFT CIVIL.PDF

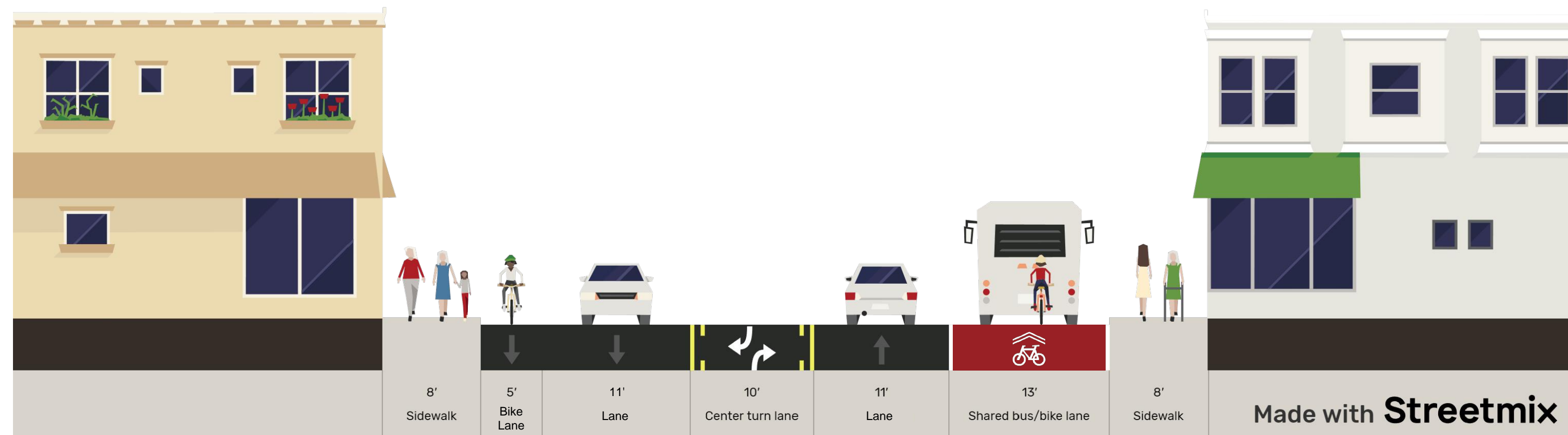
ATTACHMENT: METRO INTERIM DOWNTOWN TRANSIT CENTER PLAN – TABLE

To install the shared bus/bike lane, there will need to be a reduction of on-street parking. Existing loading curbside spaces will be maintained. A description of these parking changes is detailed below.

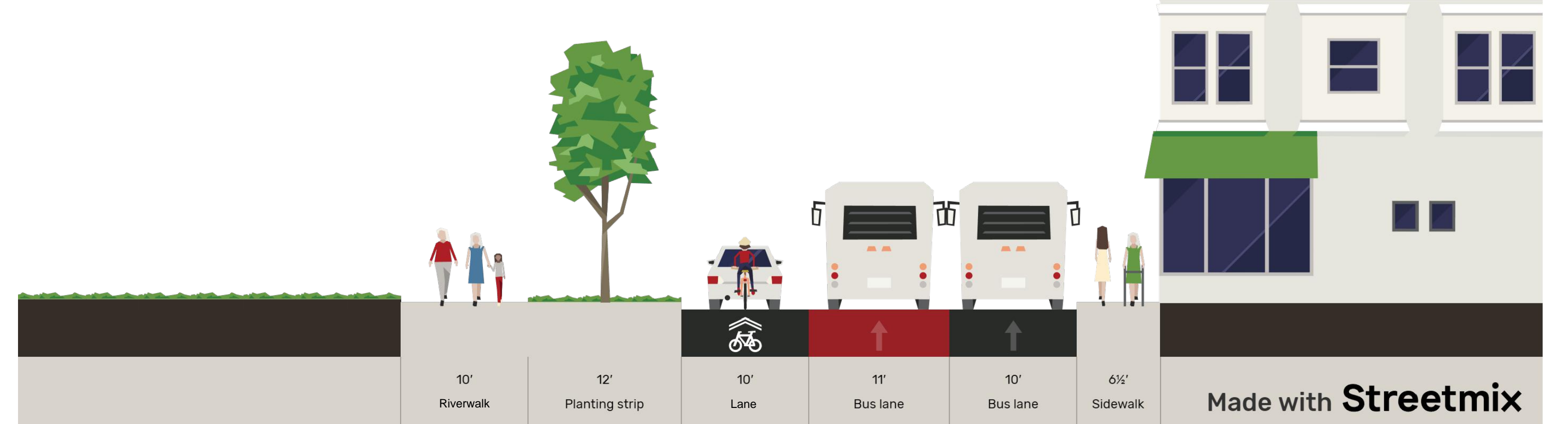
<b>Street Segment</b>	<b>Bus Spaces Added</b>	<b>Reduction of on-street parking spaces</b>	<b>Existing On-Street Parking Spaces to Remain</b>	<b>Total On-Street Parking Provided during Interim Plan</b>
Front Btwn Soquel and Cooper	5 spaces (1 bus stop, 4 layover)	7 spaces reduced on east side of street, 9 spaces added on west side of street	0 spaces	9 spaces
River Btwn Cooper and River S. South	4 spaces (Layover)	12 spaces on east side of street	0 spaces	0 spaces
River St. South	12 spaces (1 bus stop, 11 layover)	23 spaces	8 spaces	8 spaces
Soquel Avenue	2 spaces (Layover)	None	None	None



- LEGEND**
- TRANSIT AMENITIES
  - BICYCLE AMENITIES
  - PEDESTRIAN AMENITIES
  - VEHICULAR AMENITIES
  - BUS LAYOVER AREA
  - BUS STOP
  - BUS STOP SHELTER



SECTION 1 – RIVER STREET



SECTION 2 – RIVER STREET SOUTH



# PUBLIC WORKS DEPARTMENT METRO INTERIM OPERATIONS PLAN

CITY PROJECT No. XXXX

Sheet List Table	
Sheet Number	Sheet Title
C0.00	COVER SHEET
C0.01	GENERAL NOTES
C0.02	KEY MAP
C1.00	SITE PLAN
C1.01	SITE PLAN
C1.02	SITE PLAN
C1.03	SITE PLAN
C1.04	SITE PLAN
C1.05	SITE PLAN
C1.06	SITE PLAN
C1.07	CONSTRUCTION DETAILS
C3.00	CONSTRUCTION DETAILS
C4.00	SIGNING AND MARKING PLAN
C4.01	SIGNING AND MARKING PLAN
C4.02	SIGNING AND MARKING PLAN
C4.03	SIGNING AND MARKING PLAN
C4.04	SIGNING AND MARKING PLAN
C4.05	SIGNING AND MARKING PLAN
C4.06	SIGNING AND MARKING PLAN
C4.07	STRIPING QUANTITY SHEETS
C5.00	REVERSION PLAN
C5.01	REVERSION PLAN
C5.02	REVERSION PLAN
C5.03	REVERSION PLAN
C5.04	REVERSION PLAN
C5.05	REVERSION PLAN
C5.06	REVERSION PLAN

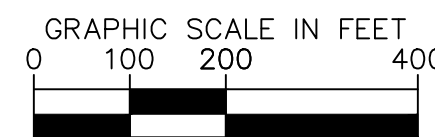
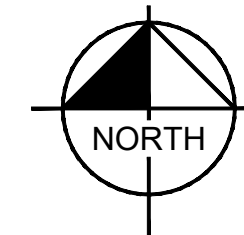


PROJECT LOCATION

**CIVIL ENGINEER**  
 KIMLEY-HORN  
 10 S ALADEN BLVD #1250,  
 SAN JOSE, CA 95113  
 CONTACT: BLAKE SILKWOOD, P.E.  
 BLAKE.SILKWOOD@KIMLEY-HORN.COM  
 T: 408-883-7034

## SANTA CRUZ COUNTY

PROJECT DESCRIPTION



**APPROVED BY:**

R.C.E. NO. 74847  
 KEVIN CROSSLEY - ASSISTANT DIRECTOR / CITY ENGINEER  
 CITY OF SANTA CRUZ

REFERENCES	DATE	7/19/2023	SCALE
FIELD BOOK:	DRAWN	AMS	SHEET OF
DRAWING #: C0.00	DESIGN	BS	VAULT NO. 7153
	CHECKED	BS	



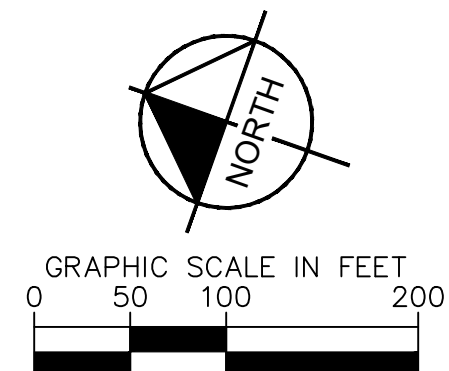
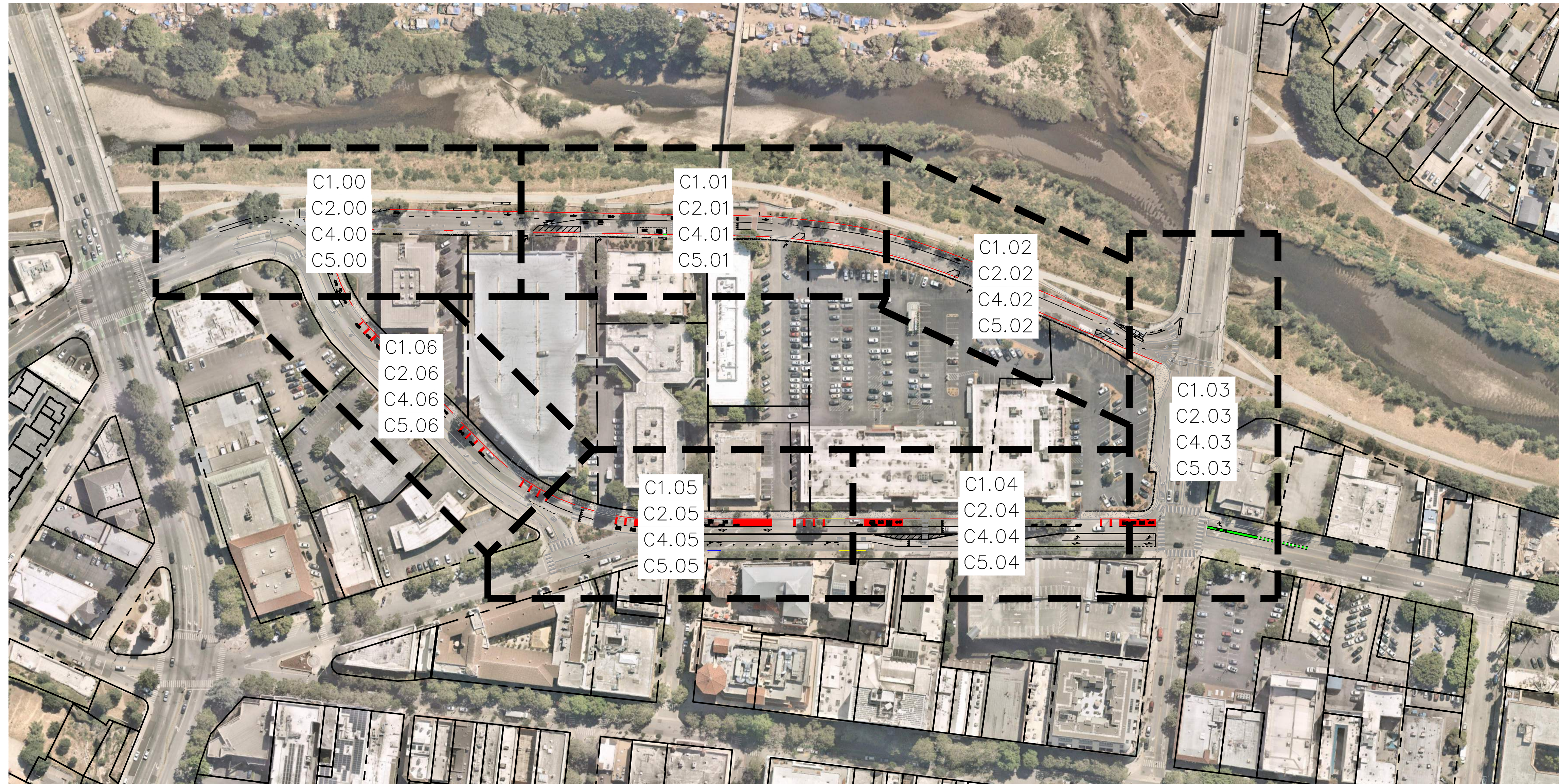
**REVISIONS**




CITY OF  
**SANTA CRUZ**  
 PUBLIC WORKS DEPARTMENT  
 809 Center Street, Room 201  
 Santa Cruz, CA 95060

**METRO INTERIM OPERATIONS PLAN**  
 GENERAL NOTES

REFERENCES	DATE	8/11/2023	SCALE
FIELD BOOK:	DRAWN	AMS	SHEET OF
DRAWING #:	DESIGN	BS	VAULT NO.
C0.01	CHECKED	BS	7153



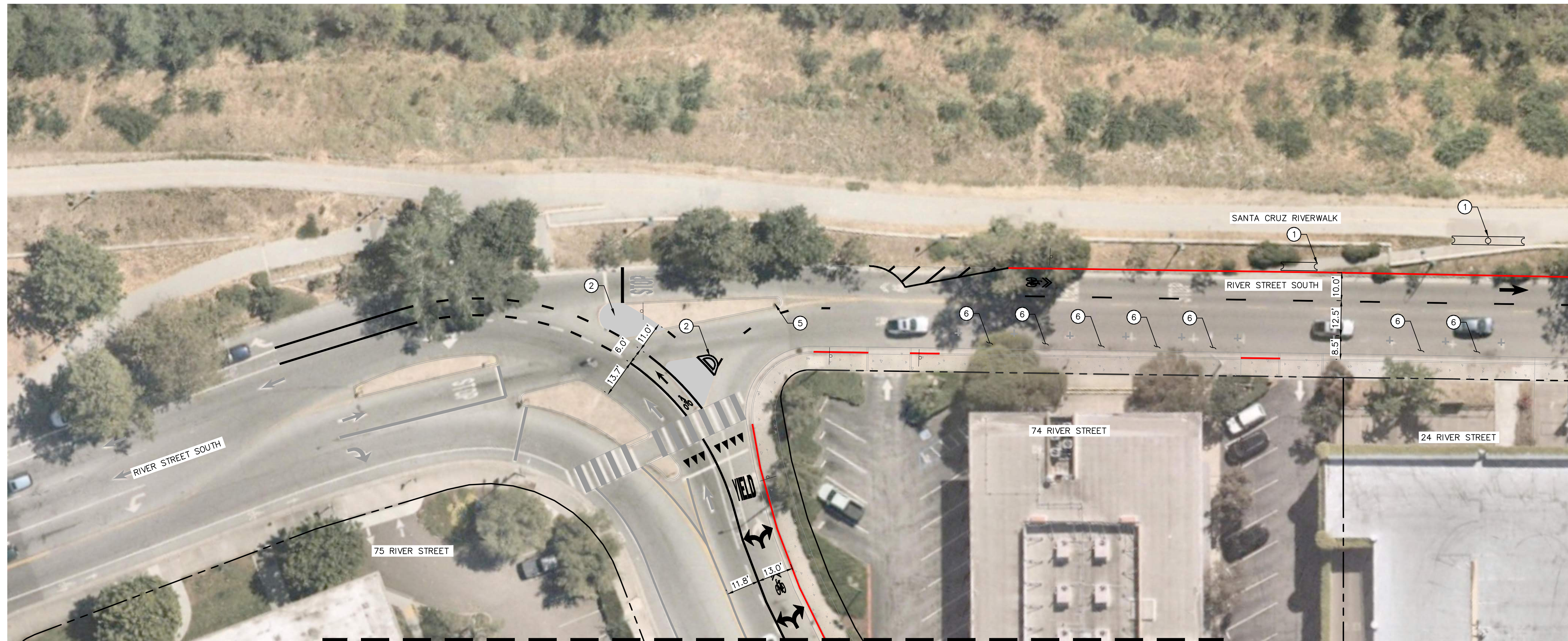
**REVISIONS**




CITY OF  
**SANTA CRUZ**  
 PUBLIC WORKS DEPARTMENT  
 809 Center Street, Room 201  
 Santa Cruz, CA 95060

**METRO INTERIM OPERATIONS PLAN  
 KEY MAP**

REFERENCES	DATE	8/11/2023	SCALE
FIELD BOOK:	DRAWN	AMS	SHEET OF
DRAWING #:	DESIGN	BS	VAULT NO.
C0.02	CHECKED	BS	7153



MATCHLINE: SEE SHEET C1.01

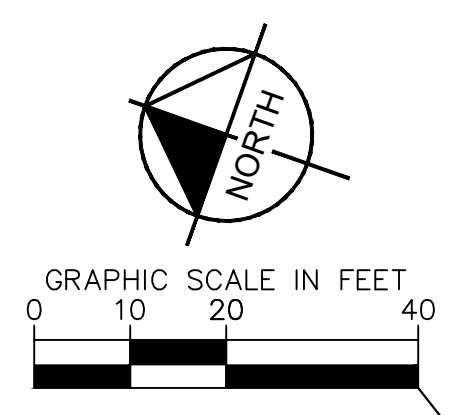
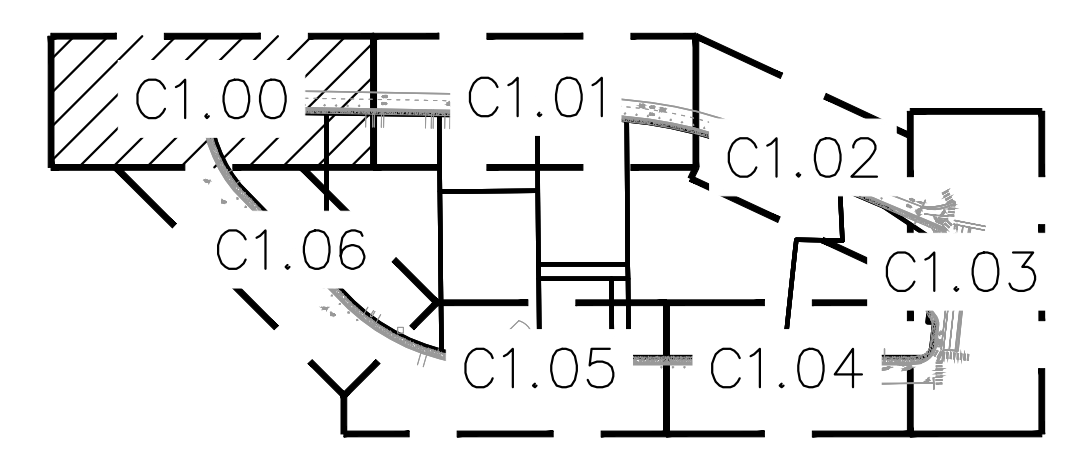
MATCHLINE: SEE SHEET C1.06

**SITE PLAN NOTES**

- ① INSTALL PORTABLE CONCRETE BARRIER TYPE 60K PER CALTRANS A63A.
- ② DEMOLISH EXISTING ISLAND AND BASE. PLACE 6" HMA (TYPE A) FLUSH WITH SURROUNDING PAVEMENT.
- ⑤ REMOVE MERGE SIGN AND SIGN POST. CONTRACTOR TO RETURN SIGN TO CITY FOR STORAGE.
- ⑥ EXISTING PARALLEL PARKING SPACE AND PARKING METER TO REMAIN.

**LEGEND**

- — — — — PROPERTY LINE
- — — — — BLUE CURB
- — — — — RED CURB
- — — — — YELLOW CURB
- — — — — STRIPING
- RED PAVEMENT
- GREEN PAVEMENT
- HMA PAVEMENT
- EXISTING CONCRETE PAVEMENT
- PROPOSED CONCRETE PAVEMENT
- — — — — SIGN



**REVISIONS**

NO.	DATE	DESCRIPTION



CITY OF  
**SANTA CRUZ**  
 PUBLIC WORKS DEPARTMENT  
 809 Center Street, Room 201  
 Santa Cruz, CA 95060

**METRO INTERIM OPERATIONS PLAN  
SITE PLAN**

REFERENCES	DATE	SCALE
	9/1/2023	
FIELD BOOK:	DRAWN	SHEET OF
	AMS	
DRAWING #:	DESIGN	Vault No.
	C1.00	7153
	CHECKED	
	BS	



MATCHLINE: SEE SHEET C1.00

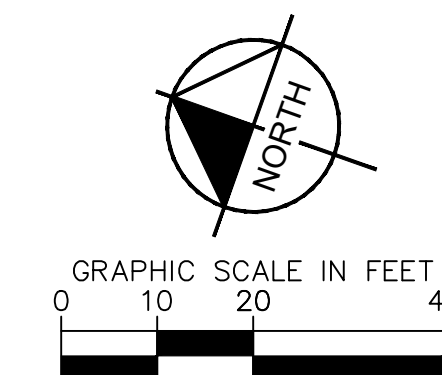
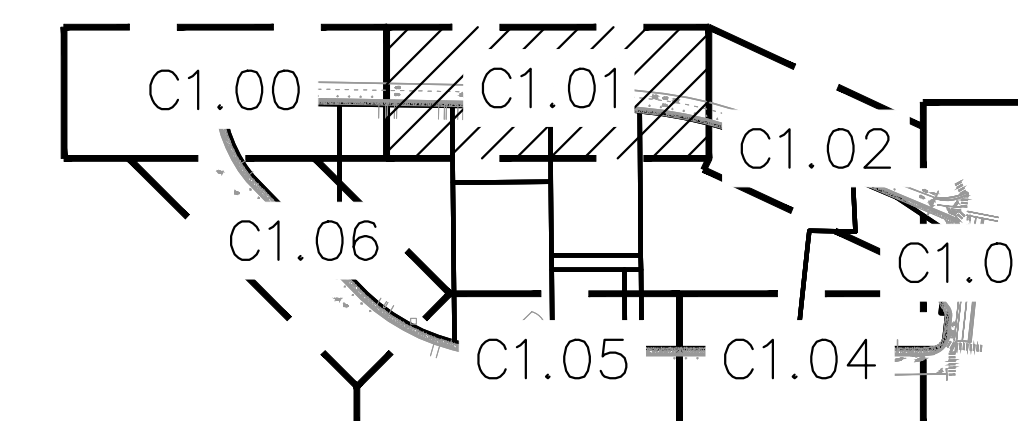
MATCHLINE: SEE SHEET C1.02

**SITE PLAN NOTES**

- ⑦ COVER EXISTING PARKING METER AND REMOVE EXISTING PARALLEL PARKING STRIPING.
- ⑪ EXISTING RRFB.
- ⑲ PROTECT-IN-PLACE PCC CROSSWALK.
- ⑳ INSTALL ASPHALT CONCRETE PAVEMENT.
- ㉓ INSTALL BUS STOP AND BENCH.

**LEGEND**

- — — — — PROPERTY LINE
- — — — — BLUE CURB
- — — — — RED CURB
- — — — — YELLOW CURB
- — — — — STRIPING
- RED PAVEMENT
- GREEN PAVEMENT
- HMA PAVEMENT
- EXISTING CONCRETE PAVEMENT
- PROPOSED CONCRETE PAVEMENT
- ⊕ SIGN



**REVISIONS**

NO.	DATE	DESCRIPTION



CITY OF  
**SANTA CRUZ**  
 PUBLIC WORKS DEPARTMENT  
 809 Center Street, Room 201  
 Santa Cruz, CA 95060

**METRO INTERIM OPERATIONS PLAN  
SITE PLAN**

REFERENCES FIELD BOOK:  DRAWING #: C1.01	DATE	9/1/2023	SCALE	
	DRAWN	AMS	SHEET	OF
	DESIGN	BS	Vault No.	7153
	CHECKED	BS		



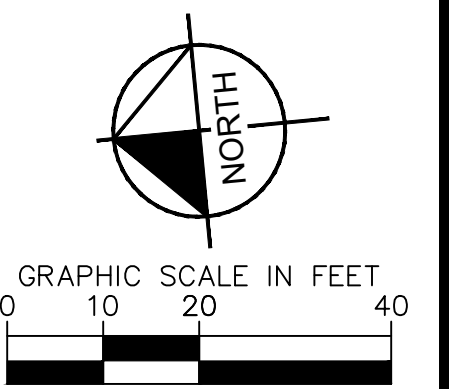
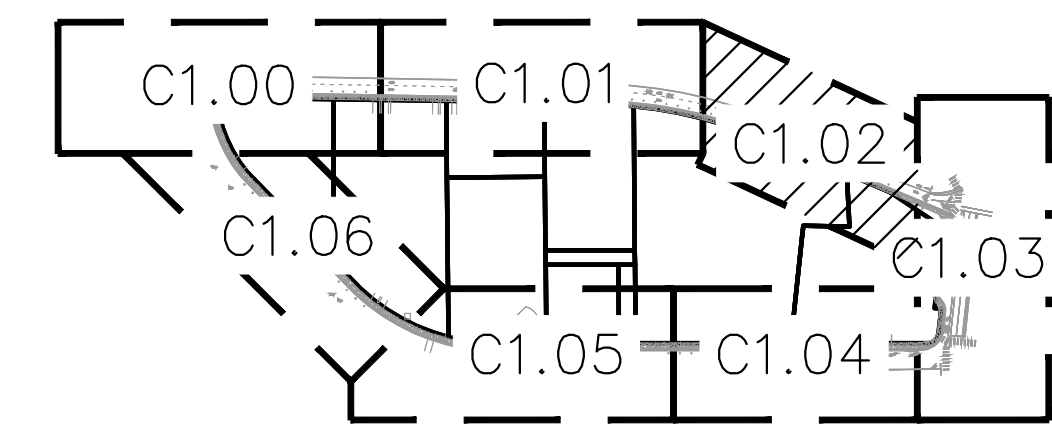


**SITE PLAN NOTES**

- ① INSTALL PORTABLE CONCRETE BARRIER TYPE 60K PER CALTRANS A63A.
- ⑦ COVER EXISTING PARKING METER AND REMOVE EXISTING PARALLEL PARKING STRIPING.
- ②② TRIM TREE BRANCHES THAT EXTEND AND HANG OVER THE ROAD RIGHT OF WAY TO PROVIDE CLEARANCE FOR EQUIPMENT TO OPERATE.

**LEGEND**

- — — — — PROPERTY LINE
- — — — — BLUE CURB
- — — — — RED CURB
- — — — — YELLOW CURB
- — — — — STRIPING
- RED PAVEMENT
- GREEN PAVEMENT
- HMA PAVEMENT
- EXISTING CONCRETE PAVEMENT
- PROPOSED CONCRETE PAVEMENT
- — — — — SIGN



**REVISIONS**

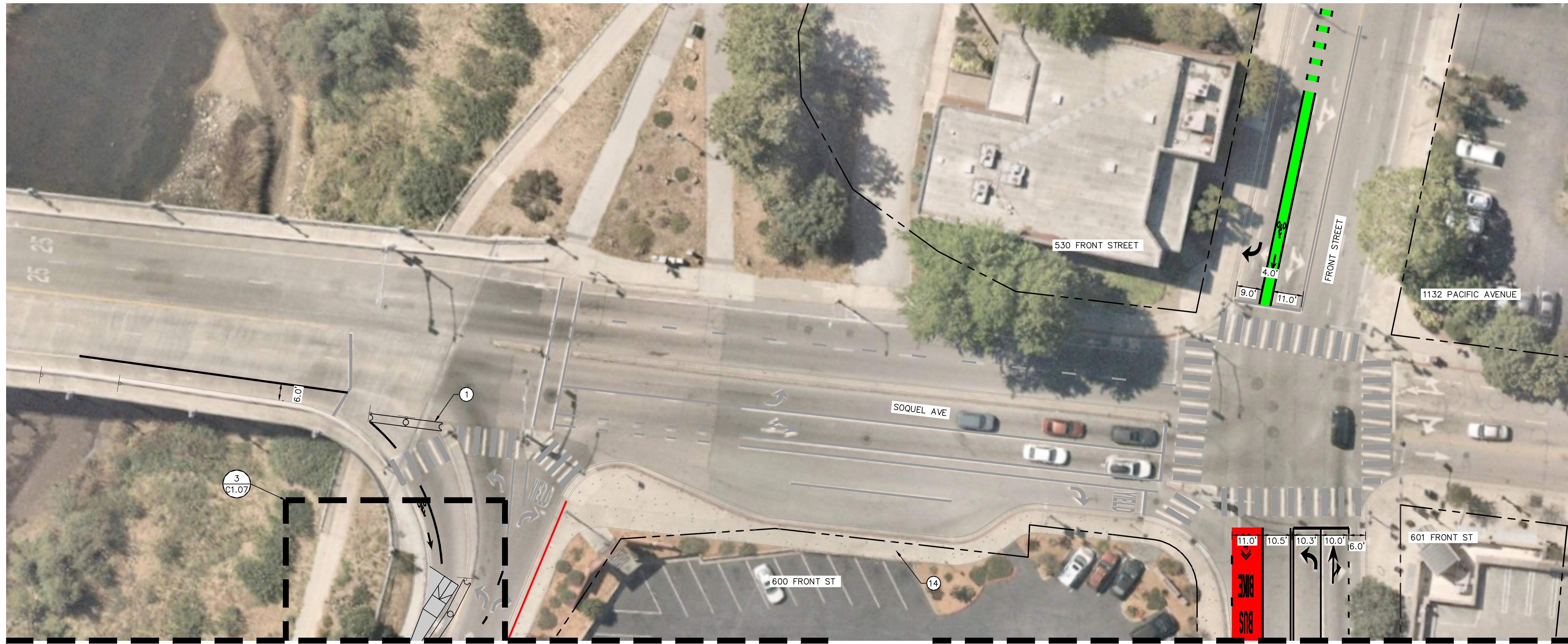
NO.	DATE	DESCRIPTION



CITY OF  
**SANTA CRUZ**  
 PUBLIC WORKS DEPARTMENT  
 809 Center Street, Room 201  
 Santa Cruz, CA 95060

**METRO INTERIM OPERATIONS PLAN**  
 SITE PLAN

REFERENCES FIELD BOOK:  DRAWING #: C1.02	DATE	9/1/2023	SCALE	
	DRAWN	AMS	SHEET	OF
	DESIGN	BS	Vault No.	7153
	CHECKED	BS		



**SITE PLAN NOTES**

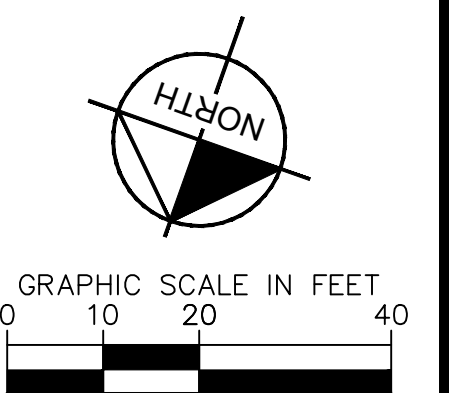
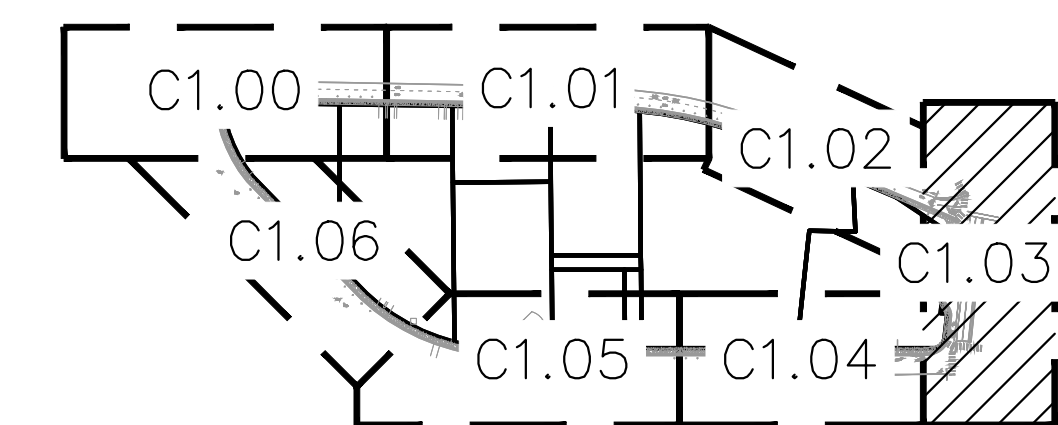
- ① INSTALL PORTABLE CONCRETE BARRIER TYPE 60K PER CALTRANS A63A.
- ⑭ EXISTING BUS STOP, SHELTER, AND BENCH TO REMAIN.

**LEGEND**

- PROPERTY LINE
- BLUE CURB
- RED CURB
- YELLOW CURB
- STRIPING
- RED PAVEMENT
- GREEN PAVEMENT
- HMA PAVEMENT
- EXISTING CONCRETE PAVEMENT
- PROPOSED CONCRETE PAVEMENT
- SIGN

MATCHLINE: SEE SHEET C1.02

MATCHLINE: SEE SHEET C1.04



**REVISIONS**

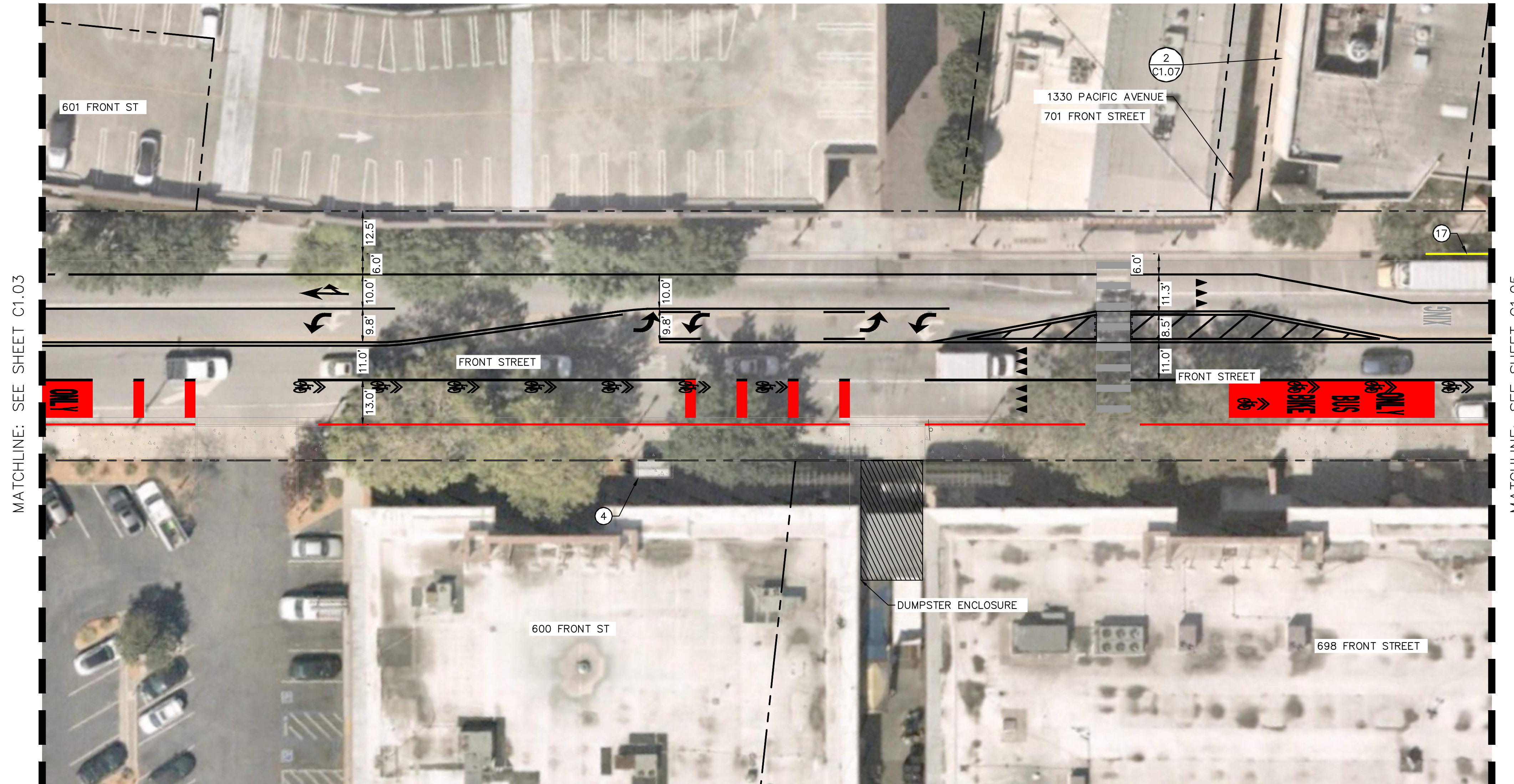
NO.	DATE	DESCRIPTION



**CITY OF SANTA CRUZ**  
 PUBLIC WORKS DEPARTMENT  
 809 Center Street, Room 201  
 Santa Cruz, CA 95060

**METRO INTERIM OPERATIONS PLAN  
 SITE PLAN**

REFERENCES	DATE	SCALE
FIELD BOOK:	9/1/2023	SHEET OF
DRAWING #:	AMS	VAULT NO. 7153
C1.03	BS	
CHECKED	BS	



MATCHLINE: SEE SHEET C1.03

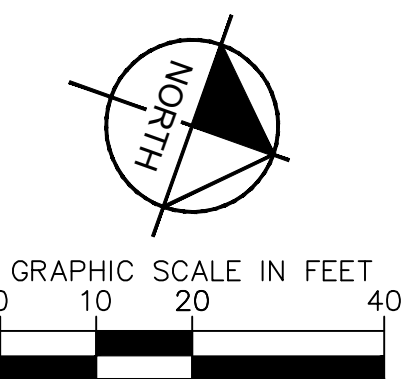
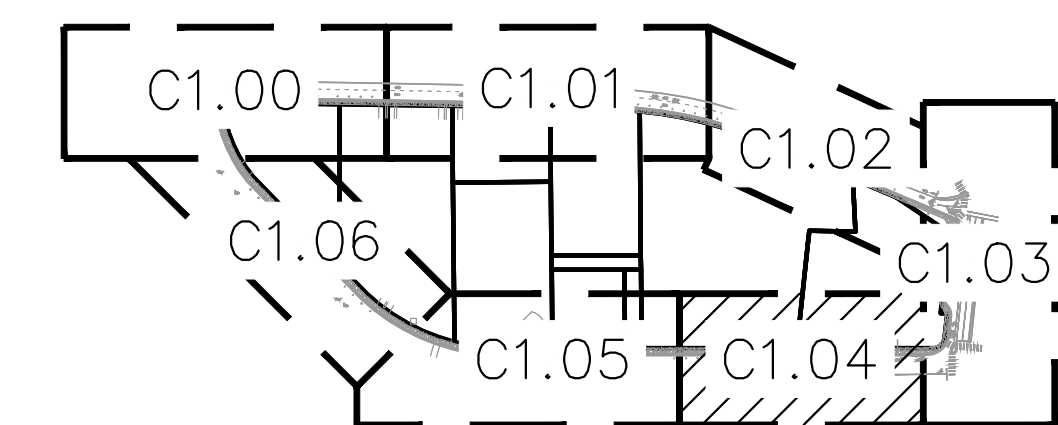
MATCHLINE: SEE SHEET C1.05

**SITE PLAN NOTES**

- ④ EXISTING BUS STOP (ID 2667), SHELTER, AND BENCH TO BE REMOVED.
- ⑰ EXISTING LOADING ZONE DENOTED BY YELLOW CURB. SEE STRIPING AND MARKING PLAN FOR DETAILS.

**LEGEND**

- — — — — PROPERTY LINE
- — — — — BLUE CURB
- — — — — RED CURB
- — — — — YELLOW CURB
- — — — — STRIPING
- RED PAVEMENT
- GREEN PAVEMENT
- HMA PAVEMENT
- EXISTING CONCRETE PAVEMENT
- PROPOSED CONCRETE PAVEMENT
- ⊙ SIGN



**REVISIONS**

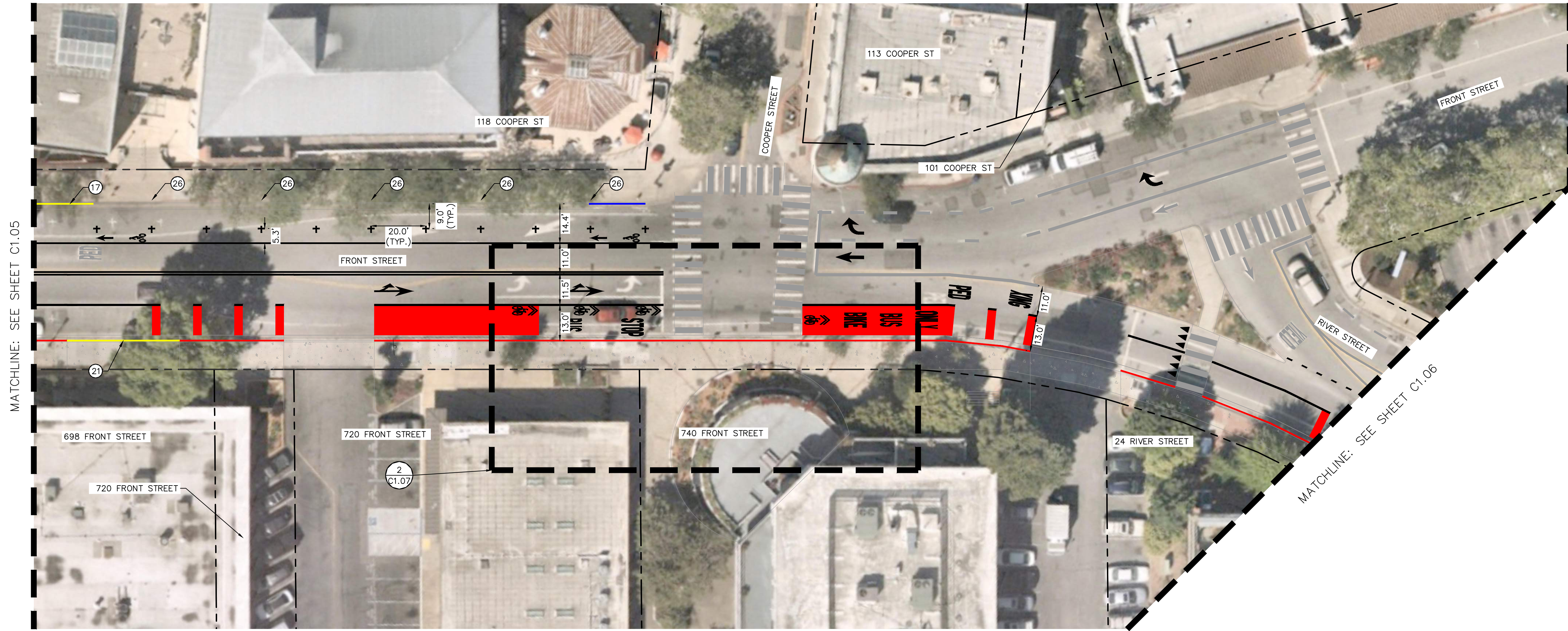
NO.	DATE	DESCRIPTION



CITY OF  
**SANTA CRUZ**  
 PUBLIC WORKS DEPARTMENT  
 809 Center Street, Room 201  
 Santa Cruz, CA 95060

**METRO INTERIM OPERATIONS PLAN**  
 SITE PLAN

REFERENCES	DATE	SCALE
FIELD BOOK:	9/1/2023	SHEET OF
DRAWING #:	AMS	VAULT NO. 7153
C1.04	BS	
CHECKED	BS	



MATCHLINE: SEE SHEET C1.05

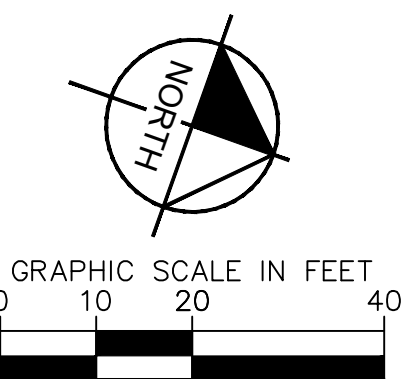
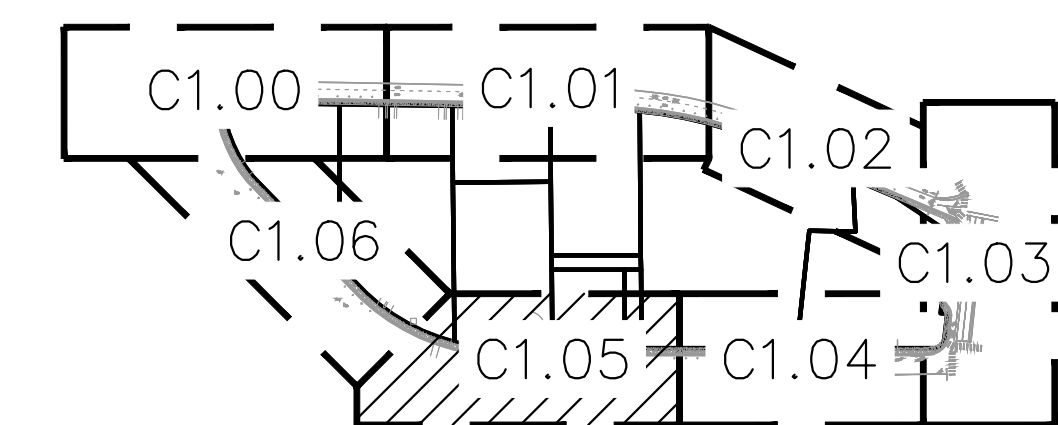
MATCHLINE: SEE SHEET C1.06

**SITE PLAN NOTES**

- (17) EXISTING LOADING ZONE DENOTED BY YELLOW CURB. SEE STRIPING AND MARKING PLAN FOR DETAILS.
- (21) EXISTING LOADING ZONE.
- (26) INSTALL PARKING METER.

**LEGEND**

- PROPERTY LINE
- BLUE CURB
- RED CURB
- YELLOW CURB
- STRIPING
- RED PAVEMENT
- GREEN PAVEMENT
- HMA PAVEMENT
- EXISTING CONCRETE PAVEMENT
- PROPOSED CONCRETE PAVEMENT
- SIGN



**REVISIONS**

NO.	DATE	DESCRIPTION



CITY OF  
**SANTA CRUZ**  
 PUBLIC WORKS DEPARTMENT  
 809 Center Street, Room 201  
 Santa Cruz, CA 95060

**METRO INTERIM OPERATIONS PLAN  
SITE PLAN**

REFERENCES	DATE	SCALE	
FIELD BOOK:	9/1/2023		
DRAWING #:	AMS	SHEET	OF
C1.05	BS	VAULT NO.	7153
CHECKED	BS		

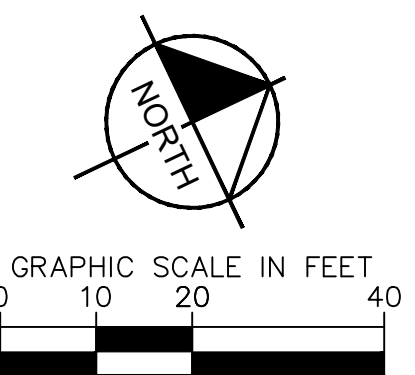
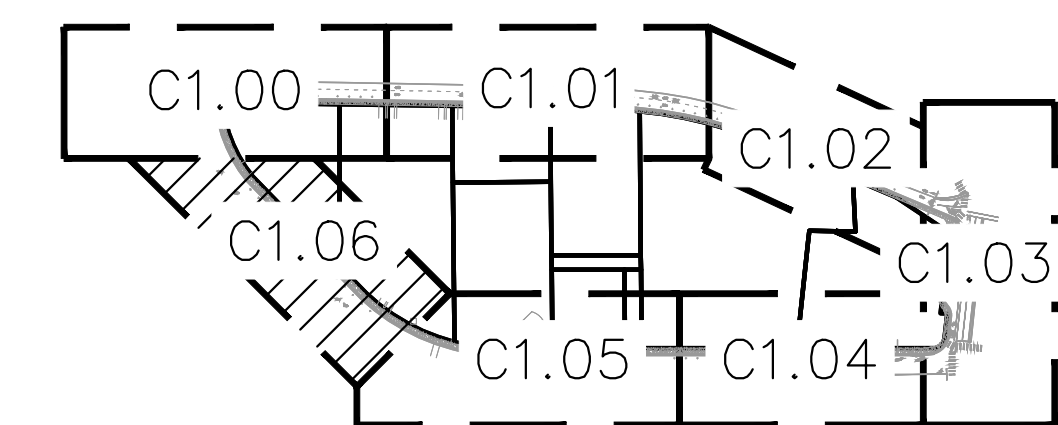


**SITE PLAN NOTES**

- ⑦ COVER EXISTING PARKING METER AND REMOVE EXISTING PARALLEL PARKING STRIPING.
- ⑩ EXISTING GARAGE BOOTH.
- ⑳ EXISTING BUS STOP (ID 1713) AND BENCH TO BE REMOVED.

**LEGEND**

- — — — — PROPERTY LINE
- — — — — BLUE CURB
- — — — — RED CURB
- — — — — YELLOW CURB
- — — — — STRIPING
- RED PAVEMENT
- HMA PAVEMENT
- EXISTING CONCRETE PAVEMENT
- SIGN



**REVISIONS**

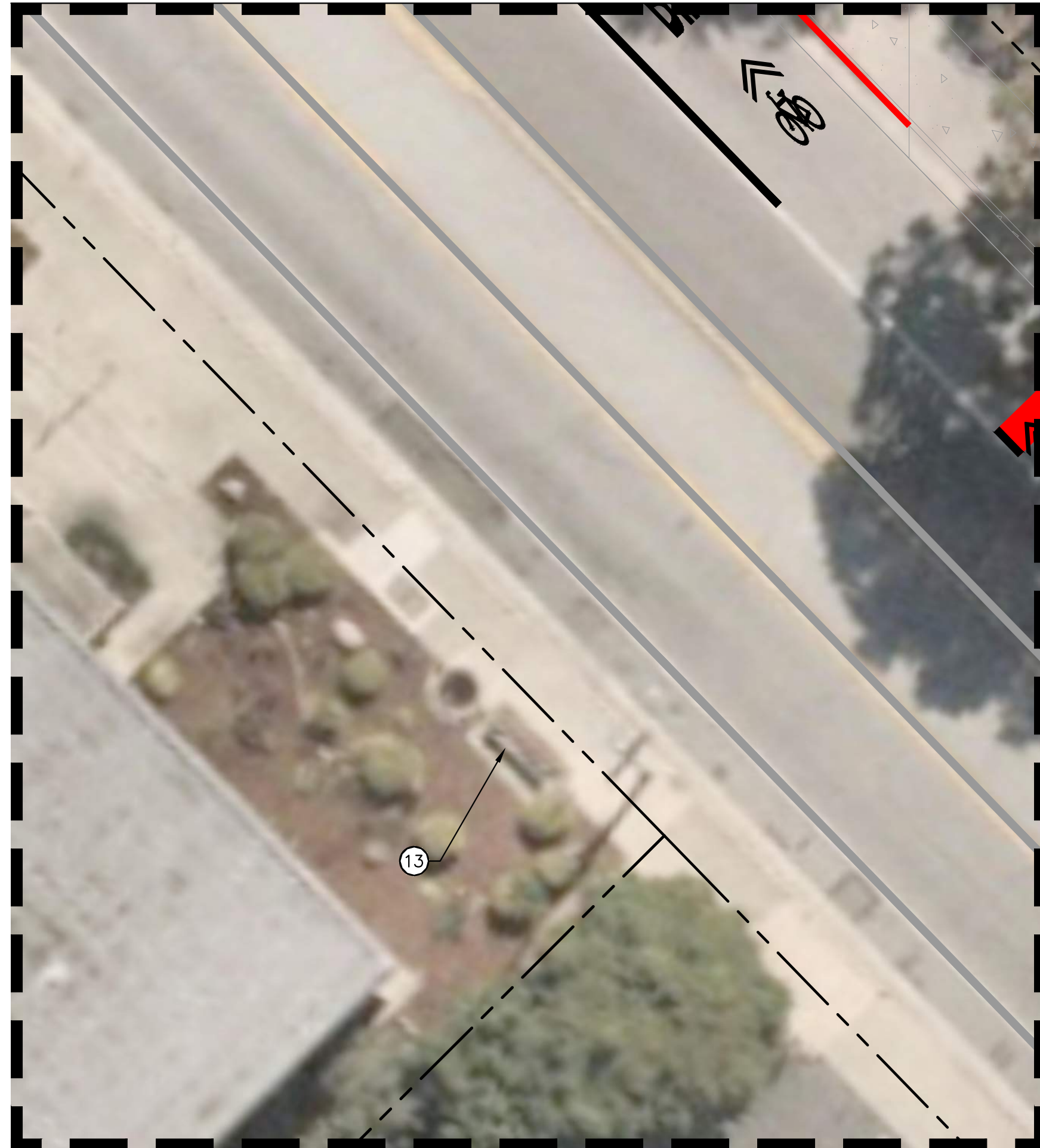
NO.	DATE	DESCRIPTION



CITY OF  
**SANTA CRUZ**  
 PUBLIC WORKS DEPARTMENT  
 809 Center Street, Room 201  
 Santa Cruz, CA 95060

**METRO INTERIM OPERATIONS PLAN**  
 SITE PLAN

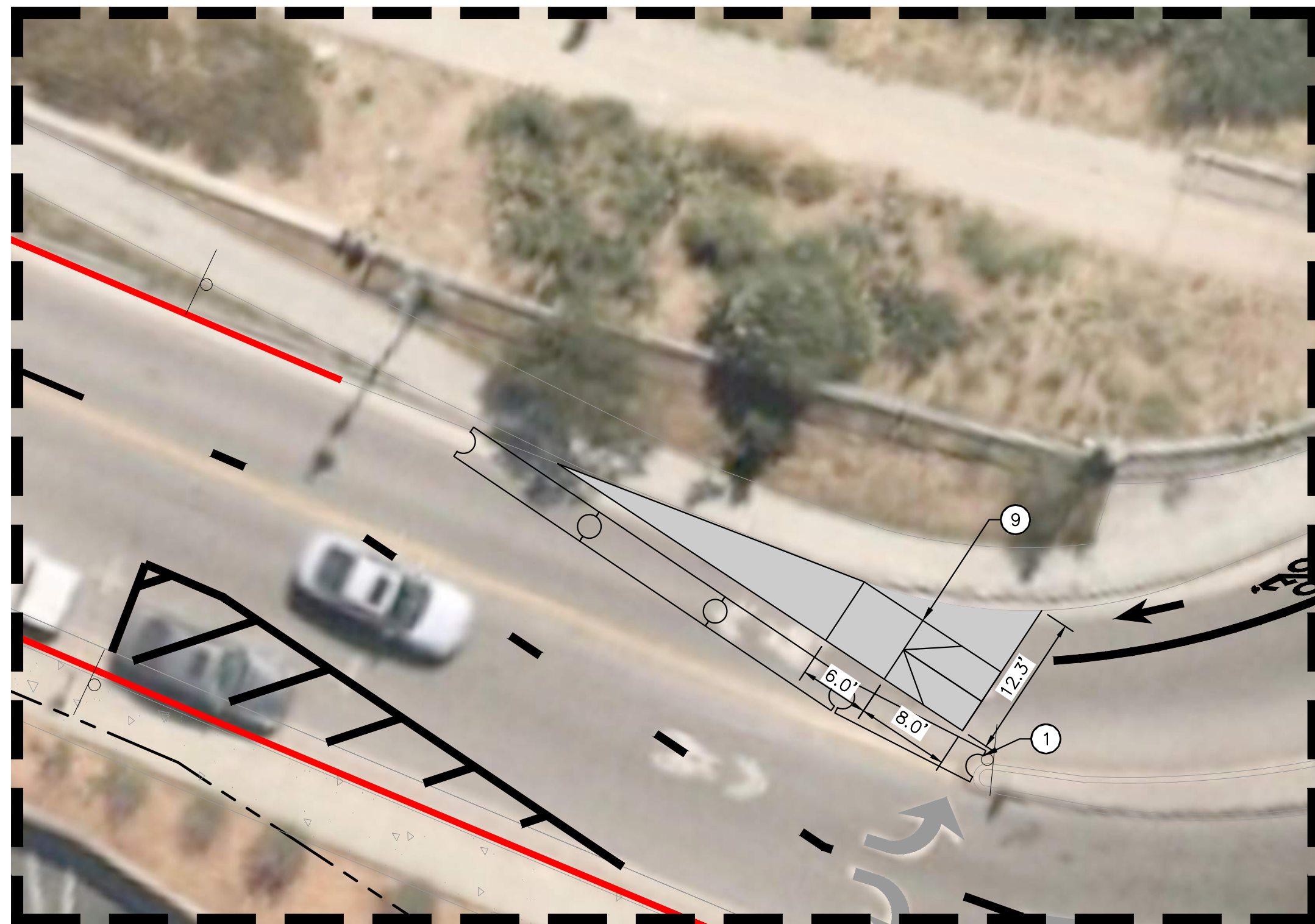
REFERENCES FIELD BOOK:  DRAWING #: C1.06	DATE	9/1/2023	SCALE	
	DRAWN	AMS	SHEET	OF
	DESIGN	BS	Vault No.	7153
	CHECKED	BS		



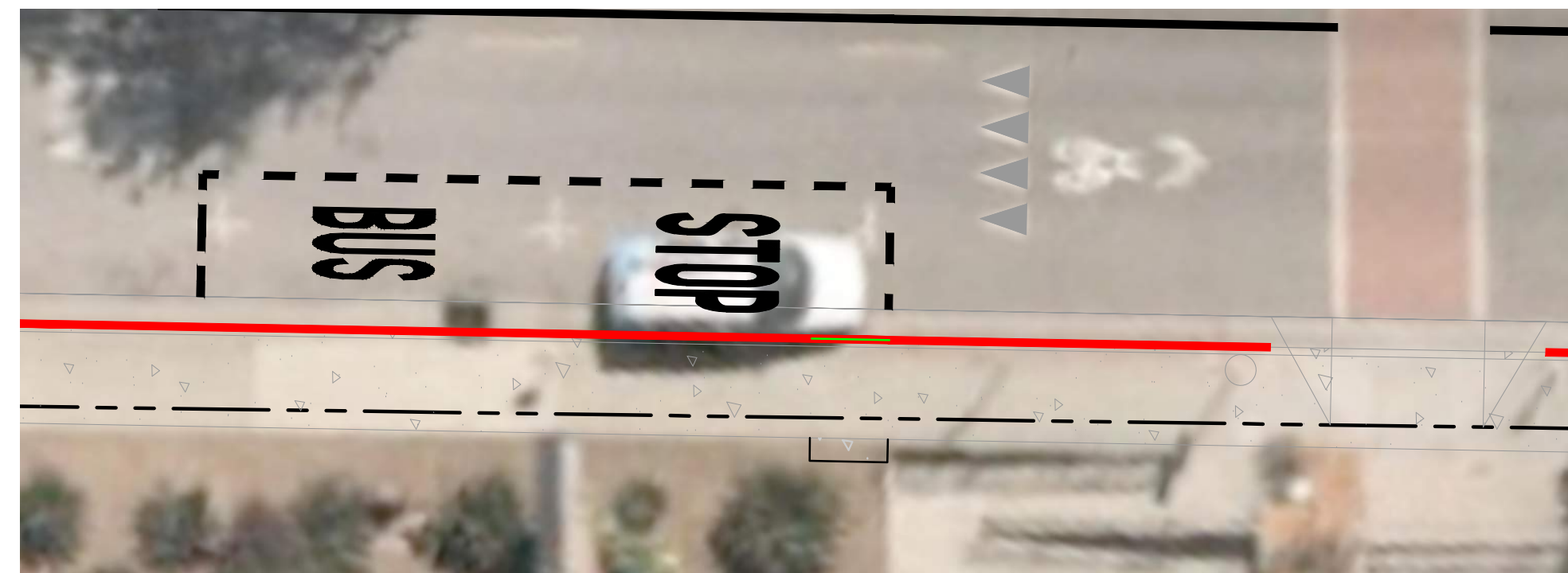
1 EXISTING BUS STOP ID 1457 DETAIL  
C1.07 SCALE: 1" = 10'



2 BUS STOP ID 1713 RELOCATION DETAIL  
C1.07 SCALE: 1" = 10'



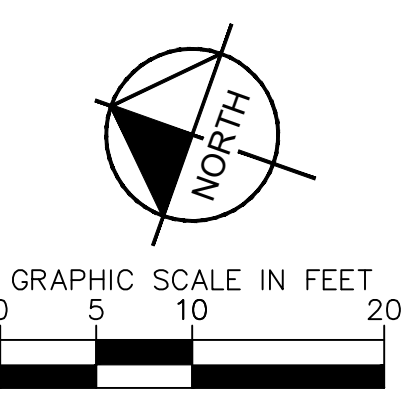
1 BIKE RAMP DETAIL  
C1.07 SCALE: 1" = 10'



4 BUS STOP DETAIL  
C1.07 SCALE: 1" = 10'

- LEGEND**
- — — — — PROPERTY LINE
  - BLUE CURB
  - RED CURB
  - YELLOW CURB
  - STRIPING
  - RED PAVEMENT
  - GREEN PAVEMENT
  - HMA PAVEMENT
  - EXISTING CONCRETE PAVEMENT
  - PROPOSED CONCRETE PAVEMENT
- SITE PLAN NOTES**
- SIGN

- ① INSTALL PORTABLE CONCRETE BARRIER TYPE 60K PER CALTRANS A63A.
- ⑨ INSTALL ASPHALT BIKE RAMP OVER EXISTING PAVEMENT. DESIGN PENDING TOPOGRAPHIC SURVEY.
- ⑬ EXISTING BUS STOP (ID 1457) AND BENCH TO BE REMOVED.



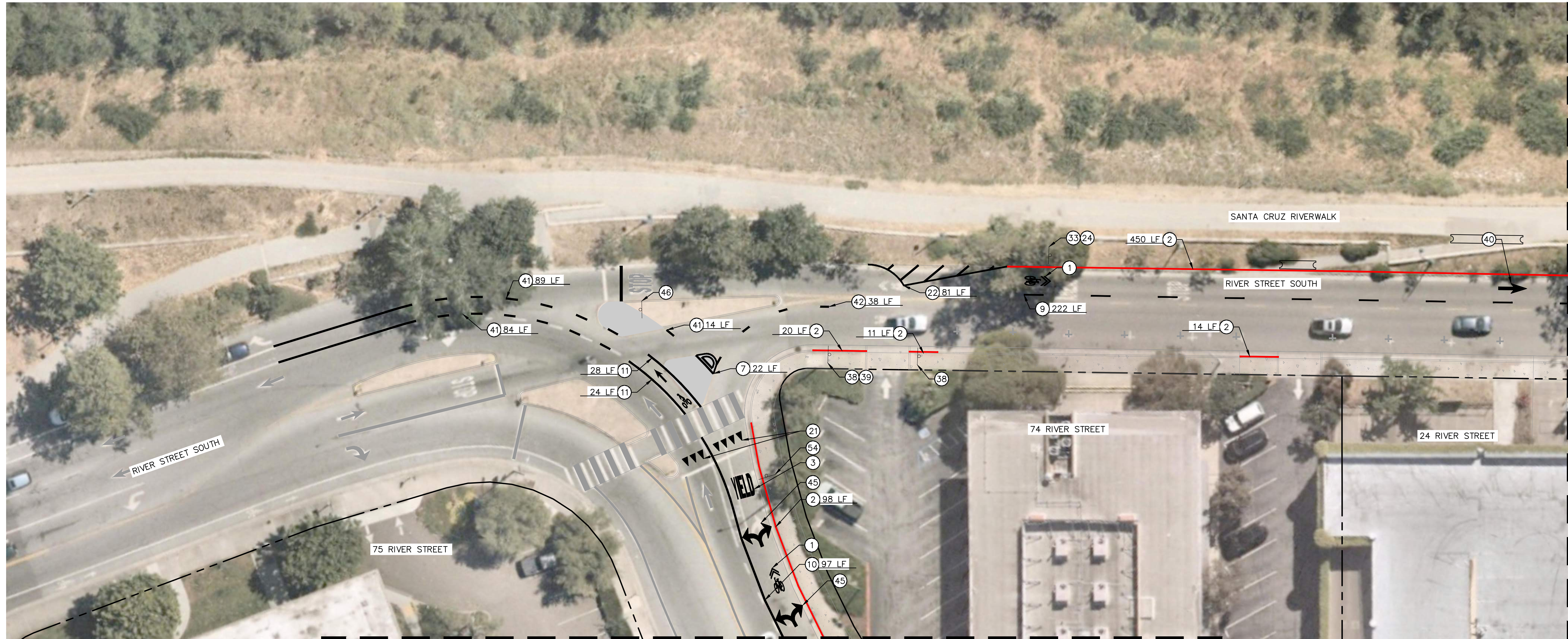
REVISIONS	



CITY OF  
**SANTA CRUZ**  
PUBLIC WORKS DEPARTMENT  
809 Center Street, Room 201  
Santa Cruz, CA 95060

**METRO INTERIM OPERATIONS PLAN**  
CONSTRUCTION DETAILS

REFERENCES FIELD BOOK:  DRAWING #: C1.07	DATE	9/1/2023	SCALE	
	DRAWN	AMS	SHEET	OF
	DESIGN	BS	Vault No.	
	CHECKED	BS		



MATCHLINE: SEE SHEET C4.01

**SIGNING AND MARKING NOTES**

- ① INSTALL SHARED ROADWAY BICYCLE MARKING PER CALTRANS A24C.
- ② PAINT RED CURB.
- ③ INSTALL YIELD MARKING PER CALTRANS A24D.
- ⑦ INSTALL 6" DOUBLE YELLOW STRIPE
- ⑨ INSTALL DETAIL 9 PER CALTRANS A20A.
- ⑩ INSTALL 6" WHITE STRIPE
- ⑪ INSTALL DETAIL 39 PER CALTRANS A20D.
- ⑳ INSTALL YIELD TRIANGLE PER CALTRANS A24G.
- ㉒ INSTALL 8" WHITE STRIPE WITH 45 DEGREE DIAGONAL STRIPING 9.0' O.C.
- ㉔ INSTALL D11-1.
- ㉓ INSTALL D11-1.
- ㉘ INSTALL R6-6.
- ㉙ INSTALL SIGN ON EXISTING POST OR LIGHT POLE.
- ㉚ INSTALL TYPE I 10'-0" ARROW PER CALTRANS A24A.
- ㉛ INSTALL DETAIL 39A PER CALTRANS A20D.
- ㉜ INSTALL 2'-4' 6" WHITE SKIP STRIPE.

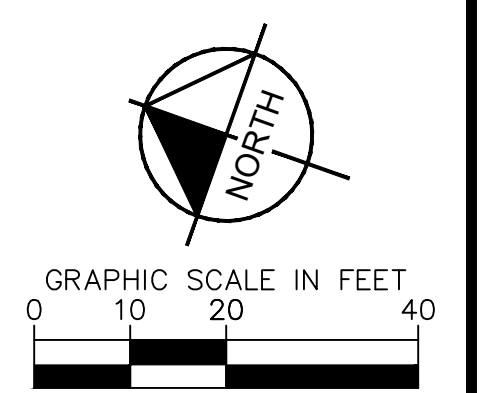
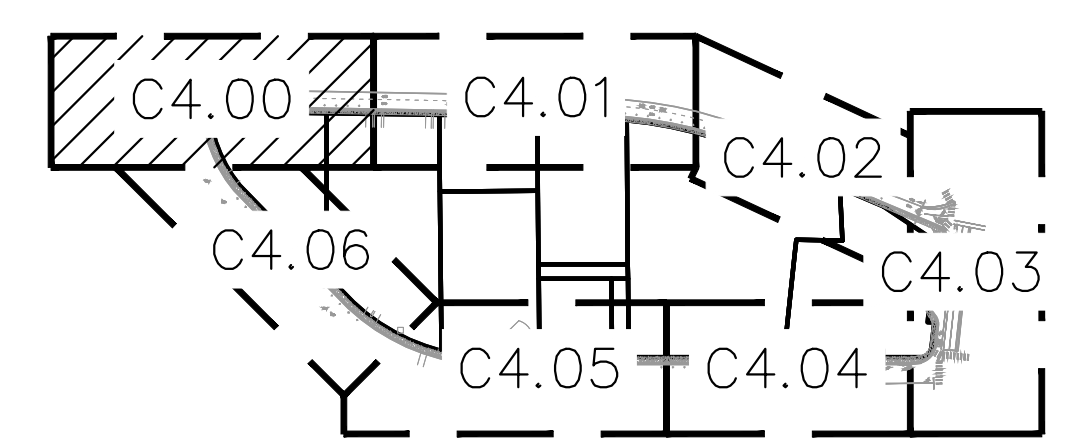
- ㉝ INSTALL TYPE VIII ARROW MARKING PER CALTRANS A24A.
- ㉞ INSTALL R1-1.
- ㉟ INSTALL R3-8.

**LEGEND**

- PROPERTY LINE
- BLUE CURB
- RED CURB
- YELLOW CURB
- STRIPING
- RED PAVEMENT
- GREEN PAVEMENT
- HMA PAVEMENT
- EXISTING CONCRETE PAVEMENT
- SIGN

**GENERAL NOTES:**  
 1. REMOVE ALL STRIPING IN CONFLICT WITH WORK.

MATCHLINE: SEE SHEET C4.06



**REVISIONS**

NO.	DATE	DESCRIPTION



CITY OF  
**SANTA CRUZ**  
 PUBLIC WORKS DEPARTMENT  
 809 Center Street, Room 201  
 Santa Cruz, CA 95060

**METRO INTERIM OPERATIONS PLAN**  
**SIGNING AND MARKING PLAN**

REFERENCES	DATE	SCALE
FIELD BOOK:	8/11/2023	SHEET OF
DRAWING #:	AMS	Vault No. 7153
C4.00	BS	
	BS	

MATCHLINE: SEE SHEET C4.00

MATCHLINE: SEE SHEET C4.02



**SIGNING AND MARKING NOTES**

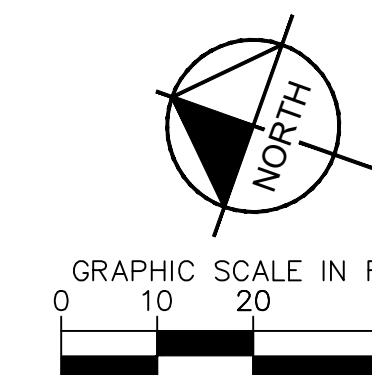
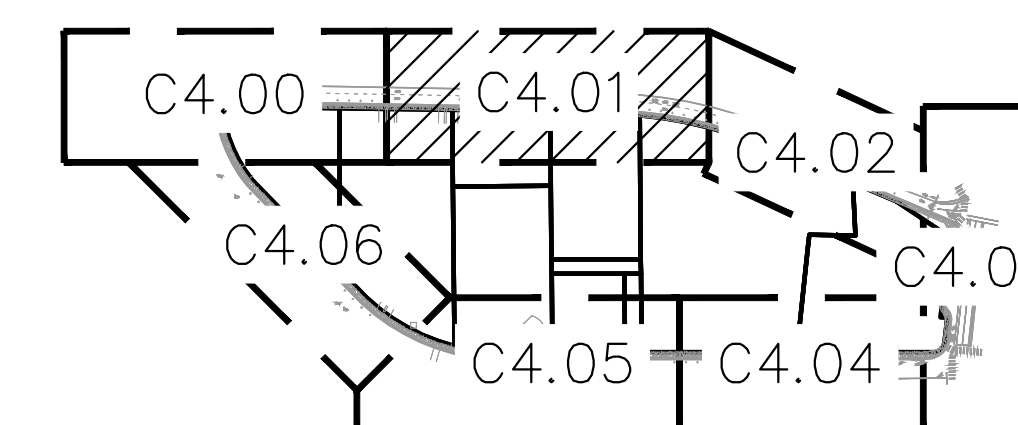
- ① INSTALL SHARED ROADWAY BICYCLE MARKING PER CALTRANS A24C.
- ② PAINT RED CURB.
- ⑤ INSTALL TYPE IV (R) ARROW PER CALTRANS A24A.
- ⑥ INSTALL BUS MARKING AND STOP MARKING PER CALTRANS A24E.
- ⑨ INSTALL DETAIL 9 PER CALTRANS A20A.
- ⑩ INSTALL 6" WHITE STRIPE
- ⑰ INSTALL BUS MARKING AND ONLY MARKING PER CALTRANS A24E.
- ⑳ INSTALL R6-1(R) PER CALIFORNIA MUTCD FIGURE 2B-14.
- ㉑ INSTALL YIELD TRIANGLE PER CALTRANS A24G.
- ㉒ INSTALL 8" WHITE STRIPE WITH 45 DEGREE DIAGONAL STRIPING 9.0' O.C.
- ㉔ ROTATE EXISTING PEDESTRIAN CROSSING SIGN TO FACE SOUTHBOUND TRAFFIC.
- ㉗ INSTALL SR60-6(CA)(MOD). SEE SHEET C3.00 FOR DETAILS
- ㉘ INSTALL R28C(CA).
- ④① INSTALL TYPE I 10'-0" ARROW PER CALTRANS A24A.
- ⑤③ INSTALL R26L.

**LEGEND**

- PROPERTY LINE
- BLUE CURB
- RED CURB
- YELLOW CURB
- STRIPING
- RED PAVEMENT
- GREEN PAVEMENT
- HMA PAVEMENT
- EXISTING CONCRETE PAVEMENT
- SIGN

**GENERAL NOTES:**

- 1. REMOVE ALL STRIPING IN CONFLICT WITH WORK.



**REVISIONS**

NO.	DATE	DESCRIPTION



CITY OF  
**SANTA CRUZ**  
PUBLIC WORKS DEPARTMENT  
809 Center Street, Room 201  
Santa Cruz, CA 95060

**METRO INTERIM OPERATIONS PLAN  
SIGNING AND MARKING PLAN**

REFERENCES	DATE	SCALE
FIELD BOOK:	8/11/2023	SHEET OF
DRAWING #:	AMS	Vault No. 7153
C4.01	BS	
	BS	

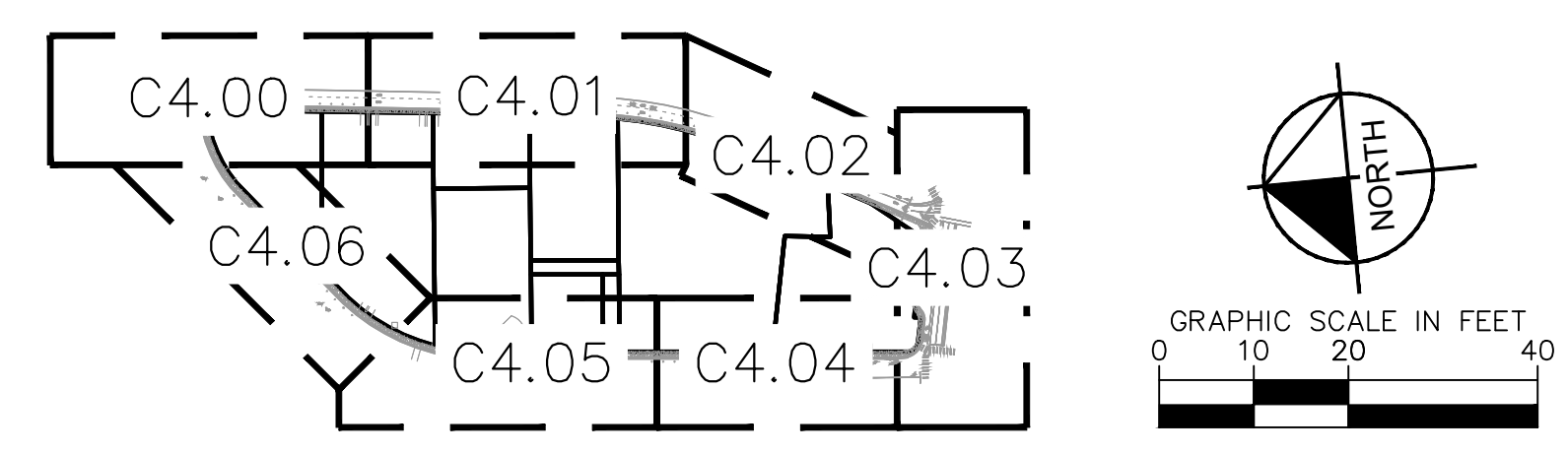




- SIGNING AND MARKING NOTES**
- ① INSTALL SHARED ROADWAY BICYCLE MARKING PER CALTRANS A24C.
  - ② PAINT RED CURB.
  - ⑨ INSTALL DETAIL 9 PER CALTRANS A20A.
  - ⑩ INSTALL 6" WHITE STRIPE
  - ⑰ INSTALL BUS MARKING AND ONLY MARKING PER CALTRANS A24E.
  - ⑱ INSTALL DETAIL 37B PER CALTRANS A20C.
  - ⑳ INSTALL R6-1(R) PER CALIFORNIA MUTCD FIGURE 2B-14.
  - ㉒ INSTALL 8" WHITE STRIPE WITH 45 DEGREE DIAGONAL STRIPING 9.0' O.C.
  - ㉔ INSTALL SR60-6(CA)(MOD). SEE SHEET C3.00 FOR DETAILS
  - ㉕ INSTALL R28C(CA).
  - ㉖ INSTALL R3-12G.
  - ㉗ INSTALL TYPE 1 10'-0" ARROW PER CALTRANS A24A.

- LEGEND**
- — — — — PROPERTY LINE
  - — — — — BLUE CURB
  - — — — — RED CURB
  - — — — — YELLOW CURB
  - — — — — STRIPING
  - RED PAVEMENT
  - GREEN PAVEMENT
  - HMA PAVEMENT
  - EXISTING CONCRETE PAVEMENT
  - SIGN

**GENERAL NOTES:**  
 1. REMOVE ALL STRIPING IN CONFLICT WITH WORK.



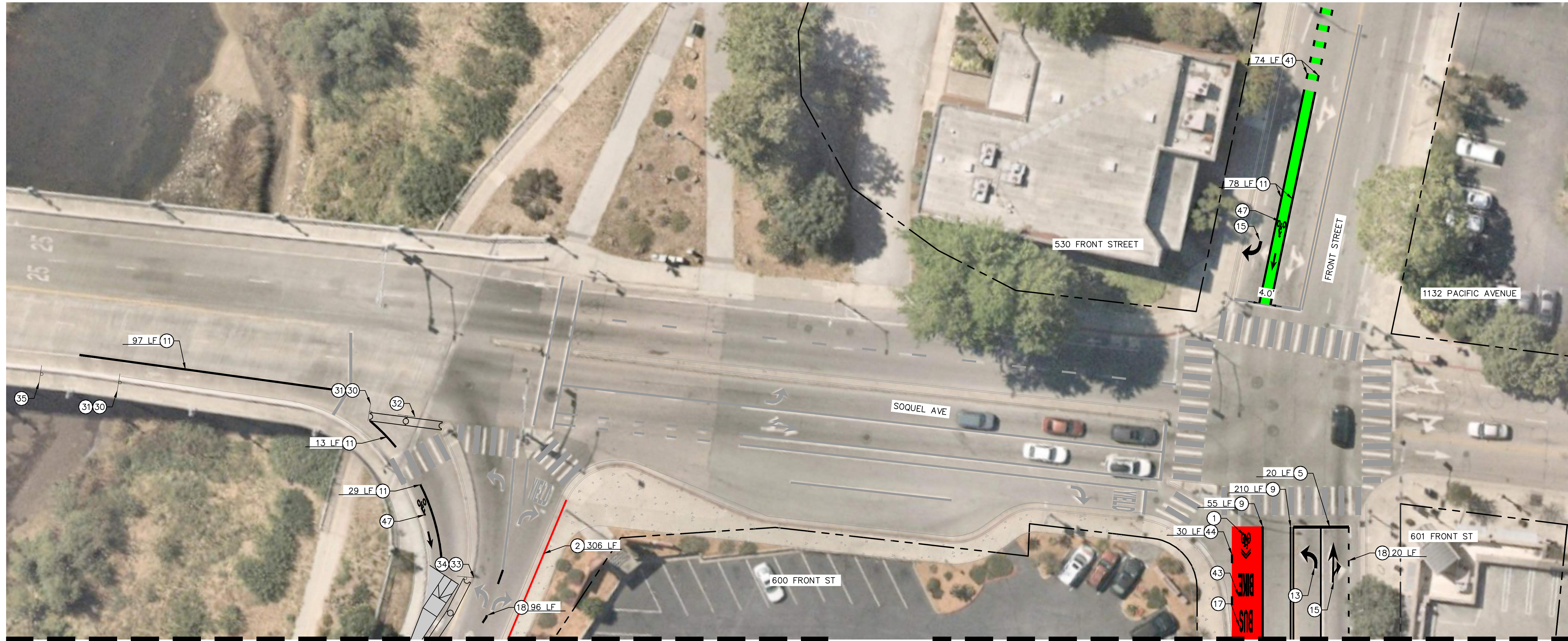
REVISIONS	



**CITY OF  
SANTA CRUZ**  
PUBLIC WORKS DEPARTMENT  
809 Center Street, Room 201  
Santa Cruz, CA 95060

**METRO INTERIM OPERATIONS PLAN  
SIGNING AND MARKING PLAN**

REFERENCES FIELD BOOK:  DRAWING #: C4.02	DATE	8/11/2023	SCALE	
	DRAWN	AMS	SHEET	OF
	DESIGN	BS	Vault No.	7153
	CHECKED	BS		



**SIGNING AND MARKING NOTES**

- ① INSTALL SHARED ROADWAY BICYCLE MARKING PER CALTRANS A24C.
- ② PAINT RED CURB.
- ⑤ INSTALL TYPE IV (R) ARROW PER CALTRANS A24A.
- ⑨ INSTALL DETAIL 9 PER CALTRANS A20A.
- ⑪ INSTALL DETAIL 39 PER CALTRANS A20D.
- ⑬ INSTALL TYPE IV (L) ARROW PER CALTRANS A24A.
- ⑮ INSTALL TYPE II (R) ARROW PER CALTRANS A24B.
- ⑰ INSTALL BUS MARKING AND ONLY MARKING PER CALTRANS A24E.
- ⑱ INSTALL DETAIL 37B PER CALTRANS A20C.
- ⑳ INSTALL R3-1.
- ㉑ INSTALL R118(CA).
- ㉒ INSTALL DO NOT ENTER SIGN.
- ㉓ INSTALL D11-1.
- ㉔ INSTALL M6-2.
- ㉕ INSTALL SPECIAL SIGN STATING "RIVER ST S CLOSED - USE FRONT ST".
- ㉖ INSTALL DETAIL 39A PER CALTRANS A20D.

MATCHLINE: SEE SHEET C4.02

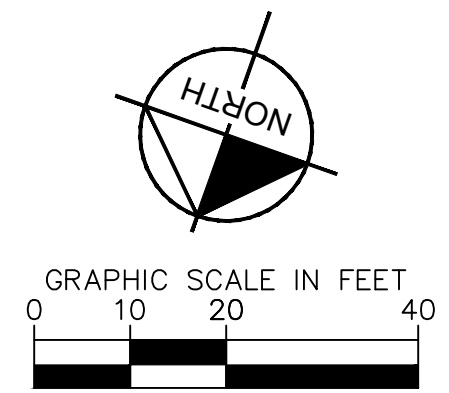
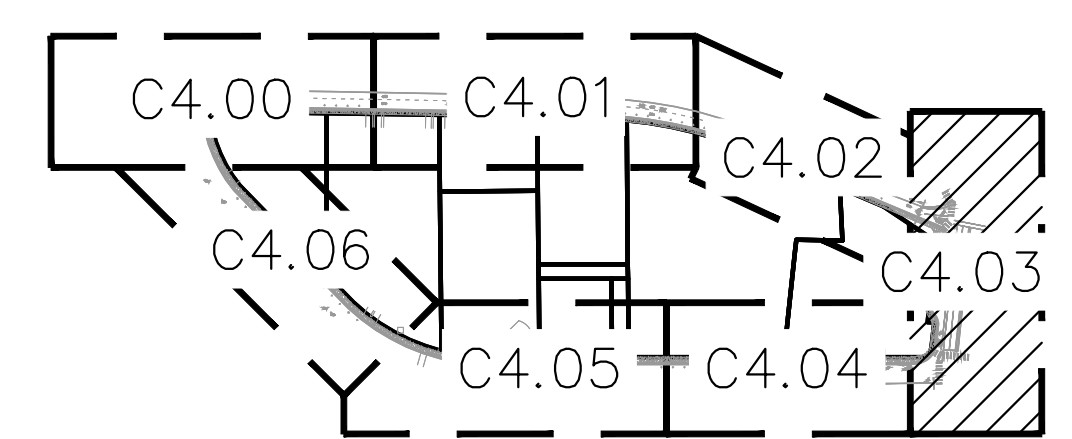
**LEGEND**

- PROPERTY LINE
- BLUE CURB
- RED CURB
- YELLOW CURB
- STRIPING
- RED PAVEMENT
- GREEN PAVEMENT
- HMA PAVEMENT
- EXISTING CONCRETE PAVEMENT
- SIGN

**GENERAL NOTES:**

- 1. REMOVE ALL STRIPING IN CONFLICT WITH WORK.

MATCHLINE: SEE SHEET C4.04



**REVISIONS**

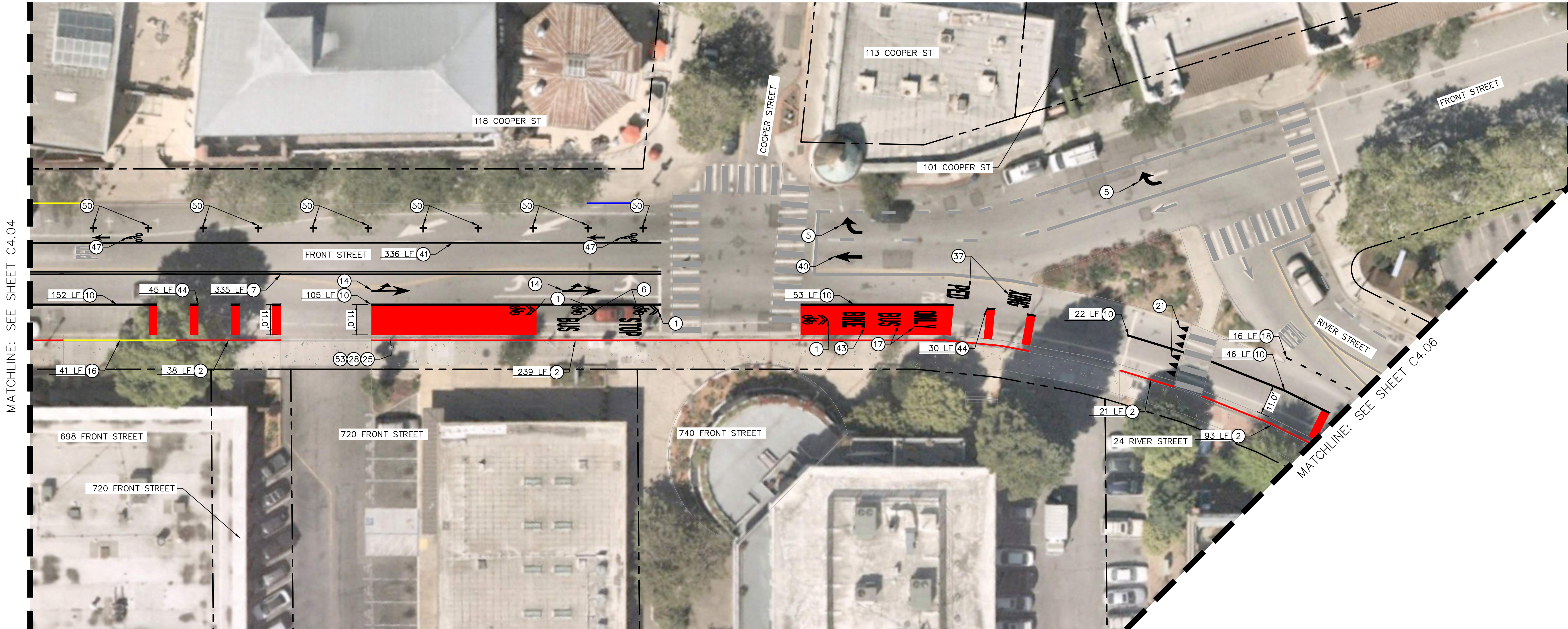


**CITY OF SANTA CRUZ**  
 PUBLIC WORKS DEPARTMENT  
 809 Center Street, Room 201  
 Santa Cruz, CA 95060

**METRO INTERIM OPERATIONS PLAN**  
 SIGNING AND MARKING PLAN

REFERENCES FIELD BOOK:  DRAWING #: C4.03	DATE	8/11/2023	SCALE	
	DRAWN	AMS	SHEET	OF
	DESIGN	BS	Vault No.	7153
	CHECKED	BS		





MATCHLINE: SEE SHEET C4.04

MATCHLINE: SEE SHEET C4.06

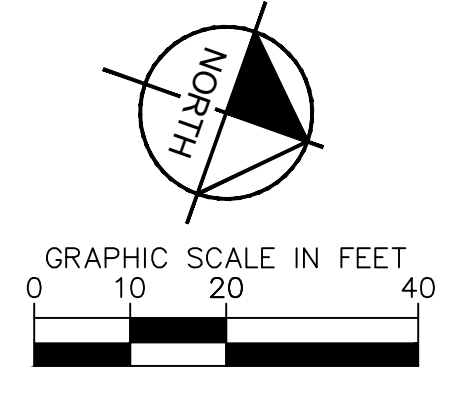
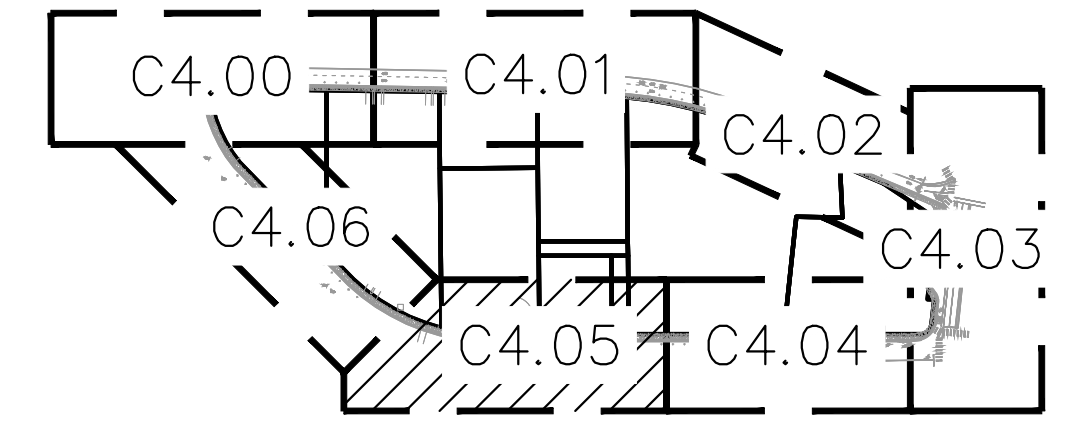
**SIGNING AND MARKING NOTES**

- ① INSTALL SHARED ROADWAY BICYCLE MARKING PER CALTRANS A24C.
- ② PAINT RED CURB.
- ⑤ INSTALL TYPE IV (R) ARROW PER CALTRANS A24A.
- ⑥ INSTALL BUS MARKING AND STOP MARKING PER CALTRANS A24E.
- ⑦ INSTALL 6" DOUBLE YELLOW STRIPE
- ⑩ INSTALL 6" WHITE STRIPE
- ⑭ INSTALL TYPE II (L) ARROW PER CALTRANS A24B.
- ⑰ PAINT YELLOW CURB FOR LOADING ZONE
- ⑰ INSTALL BUS MARKING AND ONLY MARKING PER CALTRANS A24E.
- ⑱ INSTALL DETAIL 37B PER CALTRANS A20C.
- ⑳ INSTALL YIELD TRIANGLE PER CALTRANS A24G.
- ㉓ INSTALL SR60-1(CA).
- ㉔ INSTALL R28C(CA).
- ㉗ INSTALL PED AND XING MARKING PER CALTRANS A24D.
- ㉘ INSTALL TYPE I 10'-0" ARROW PER CALTRANS A24A.
- ㉙ INSTALL DETAIL 39A PER CALTRANS A20D.
- ④③ INSTALL BIKE MARKING PER CALTRANS A24D.
- ④④ INSTALL 3"-12 8" WHITE SKIP STRIPE.
- ④⑦ INSTALL BIKE LANE SYMBOL WITH PERSON PER CALTRANS A24C AND BIKE LANE ARROW PER CALTRANS A24A.
- ⑤① INSTALL PARKING CROSS PER DETAIL XXX ON SHEET C3.00.
- ⑤③ INSTALL R26L.

**LEGEND**

- — — — — PROPERTY LINE
- — — — — BLUE CURB
- — — — — RED CURB
- — — — — YELLOW CURB
- — — — — STRIPING
- RED PAVEMENT
- GREEN PAVEMENT
- HMA PAVEMENT
- EXISTING CONCRETE PAVEMENT
- SIGN

**GENERAL NOTES:**  
 1. REMOVE ALL STRIPING IN CONFLICT WITH WORK.



**REVISIONS**

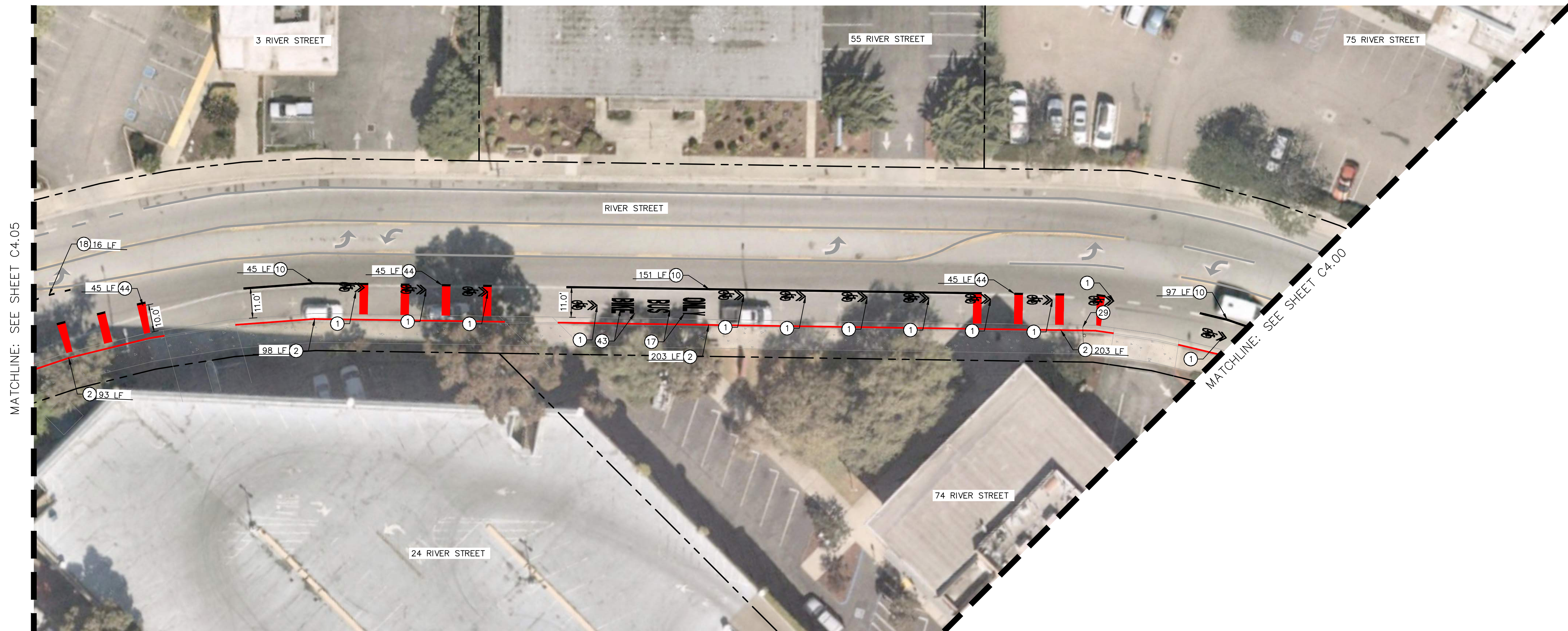
NO.	DATE	DESCRIPTION



CITY OF  
**SANTA CRUZ**  
 PUBLIC WORKS DEPARTMENT  
 809 Center Street, Room 201  
 Santa Cruz, CA 95060

**METRO INTERIM OPERATIONS PLAN**  
**SIGNING AND MARKING PLAN**

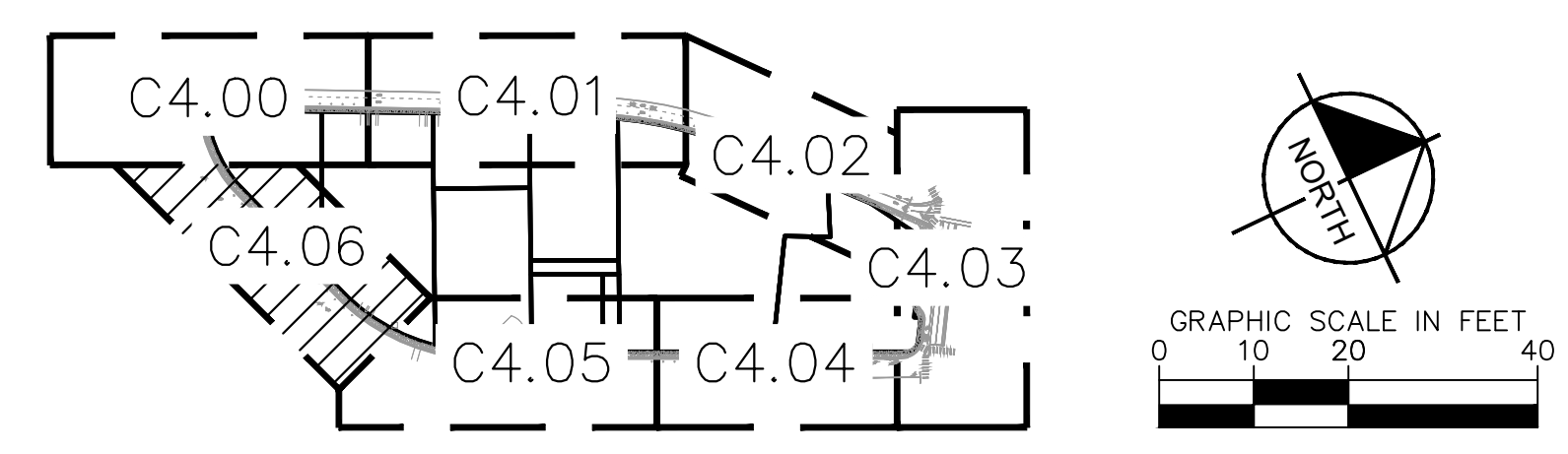
REFERENCES	DATE	SCALE
FIELD BOOK:	8/11/2023	SHEET OF
DRAWING #:	AMS	VAULT NO. 7153
C4.05	BS	
	BS	



- SIGNING AND MARKING NOTES**
- ① INSTALL SHARED ROADWAY BICYCLE MARKING PER CALTRANS A24C.
  - ② PAINT RED CURB.
  - ⑩ INSTALL 6" WHITE STRIPE
  - ⑰ INSTALL BUS MARKING AND ONLY MARKING PER CALTRANS A24E.
  - ⑱ INSTALL DETAIL 37B PER CALTRANS A20C.
  - ⑲ INSTALL R3-12G.
  - ④③ INSTALL BIKE MARKING PER CALTRANS A24D.
  - ④④ INSTALL 3'-12" 8" WHITE SKIP STRIPE.

- LEGEND**
- PROPERTY LINE
  - BLUE CURB
  - RED CURB
  - YELLOW CURB
  - STRIPING
  - RED PAVEMENT
  - GREEN PAVEMENT
  - HMA PAVEMENT
  - EXISTING CONCRETE PAVEMENT
  - SIGN

**GENERAL NOTES:**  
 1. REMOVE ALL STRIPING IN CONFLICT WITH WORK.



REVISIONS	



**CITY OF SANTA CRUZ**  
 PUBLIC WORKS DEPARTMENT  
 809 Center Street, Room 201  
 Santa Cruz, CA 95060

**METRO INTERIM OPERATIONS PLAN**  
**SIGNING AND MARKING PLAN**

REFERENCES FIELD BOOK:  DRAWING #: C4.06	DATE	8/11/2023	SCALE	
	DRAWN	AMS	SHEET	OF
	DESIGN	BS	Vault No.	7153
	CHECKED	BS		



## El Johnson

---

**From:** bikerick@att.net  
**Sent:** Monday, September 18, 2023 10:30 AM  
**To:** TPWC  
**Cc:** 'Ron Goodman'  
**Subject:** TPWC meeting of September 18, 2023: METRO Interim Downtown Transit Center Plan

**Follow Up Flag:** Follow up  
**Flag Status:** Completed

Dear Commissioners: It would be helpful if the METRO interim operations plan included a route for cyclists leaving the Trader Joe's/CVS parking lot to cross over River Street South (to become temporarily one way) to the River levee path so that they can continue northbound.

Converting River Street South to one-way southbound will leave cyclists with two choices to ride northbound as they currently can do. One will be to take Front Street, but the bike lane there will become a bus lane and traffic will increase due to the River Street South northbound closure. The other option will be to take the river levee path. The interim operations plan delineates a route that bicyclists can take from Soquel Ave. to access the levee path. This is most welcome.

Leaving the parking lot from its southern driveway, a cyclist cannot cross River Street South to the River levee due to the wall and intervening planting strip. Leaving the parking lot from its northern driveway access, a cyclist first has to turn left on River Street South for a very short distance before being able to get on the levee pathway at the curb cut. Since River Street South will become one-way, this option will be precluded. However, this option can be preserved through some added pavement markings as part of the interim plan. It is likely that cyclists will attempt to cross River Street South in any event to reach the levee pathway so it would be sensible to delineate a legal and safe way for them to do so.

Thank you for considering this recommendation.

Rick Hyman  
Santa Cruz