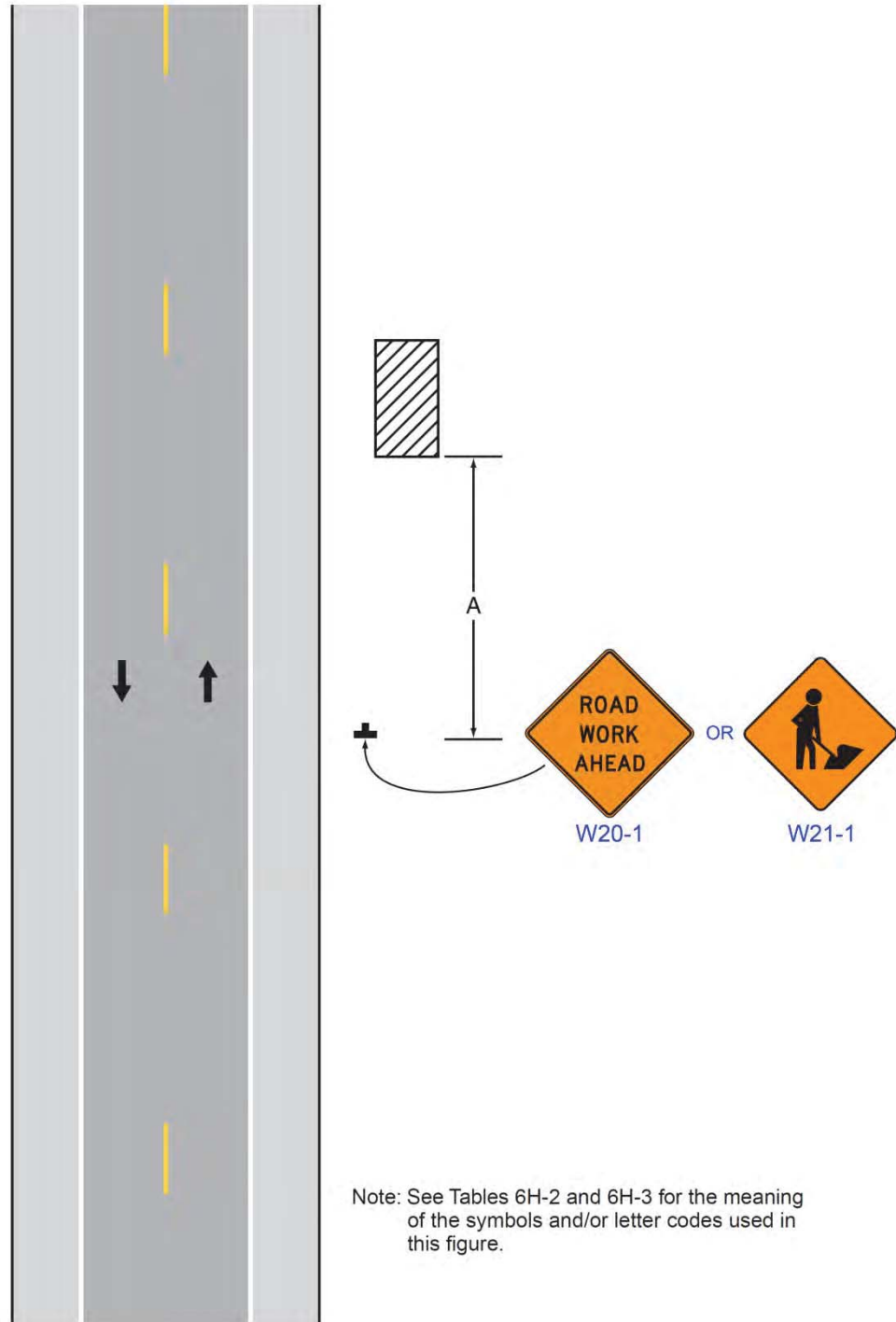


Figure 6H-1. Work Beyond the Shoulder (TA-1)



Note: See Tables 6H-2 and 6H-3 for the meaning of the symbols and/or letter codes used in this figure.

Typical Application 1

Figure 6H-105 (CA). Lane Shift on Road With Low Traffic Volumes (TA-105 (CA))

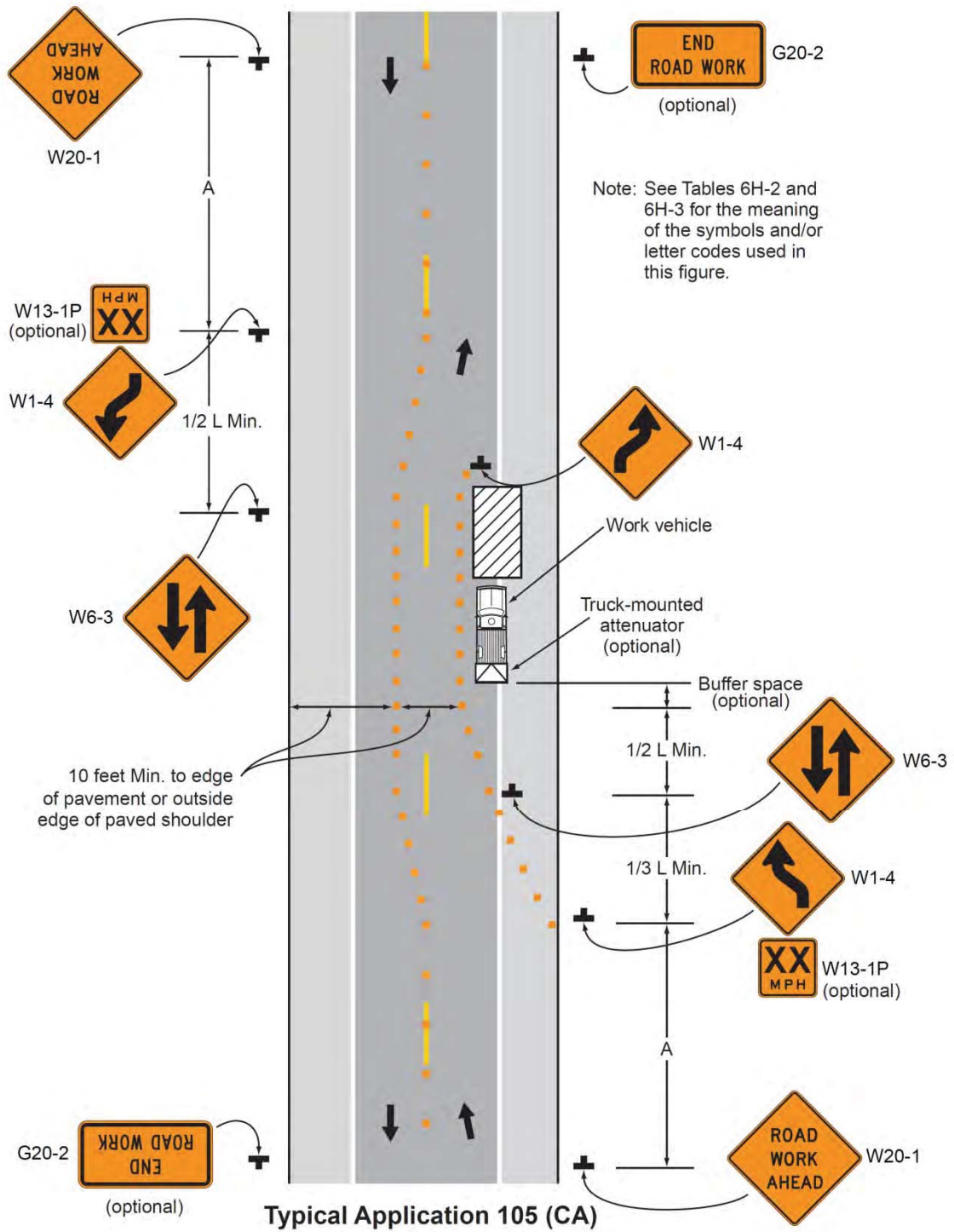


Figure 6H-26. Closure in the Center of an Intersection (TA-26)

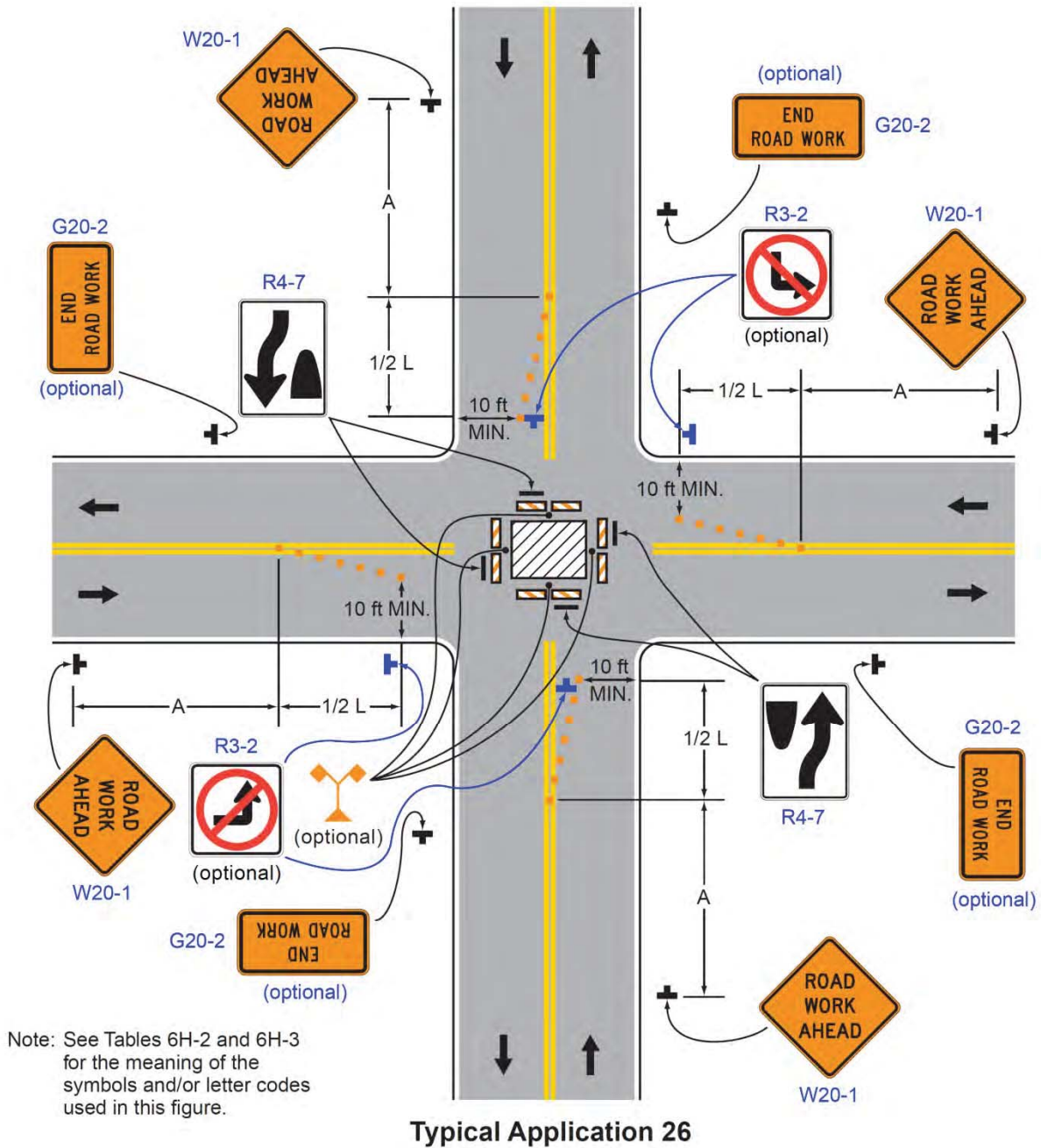


Figure 6H-15. Work in Center of Road with Low Traffic Volumes (TA-15)

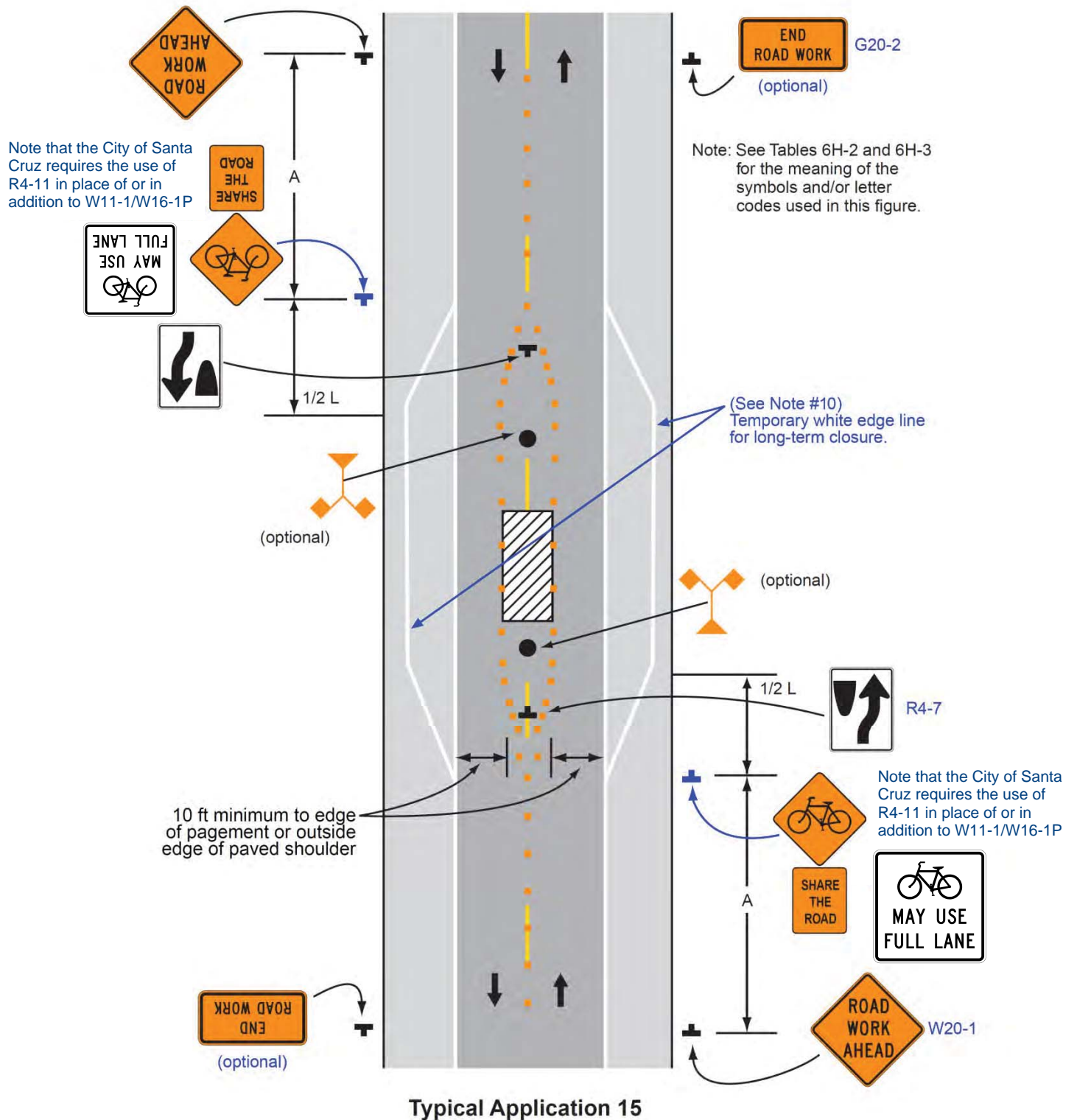


Figure 6H-10 (CA). Lane Closure on Two-Lane Road Using Flaggers (TA-10)

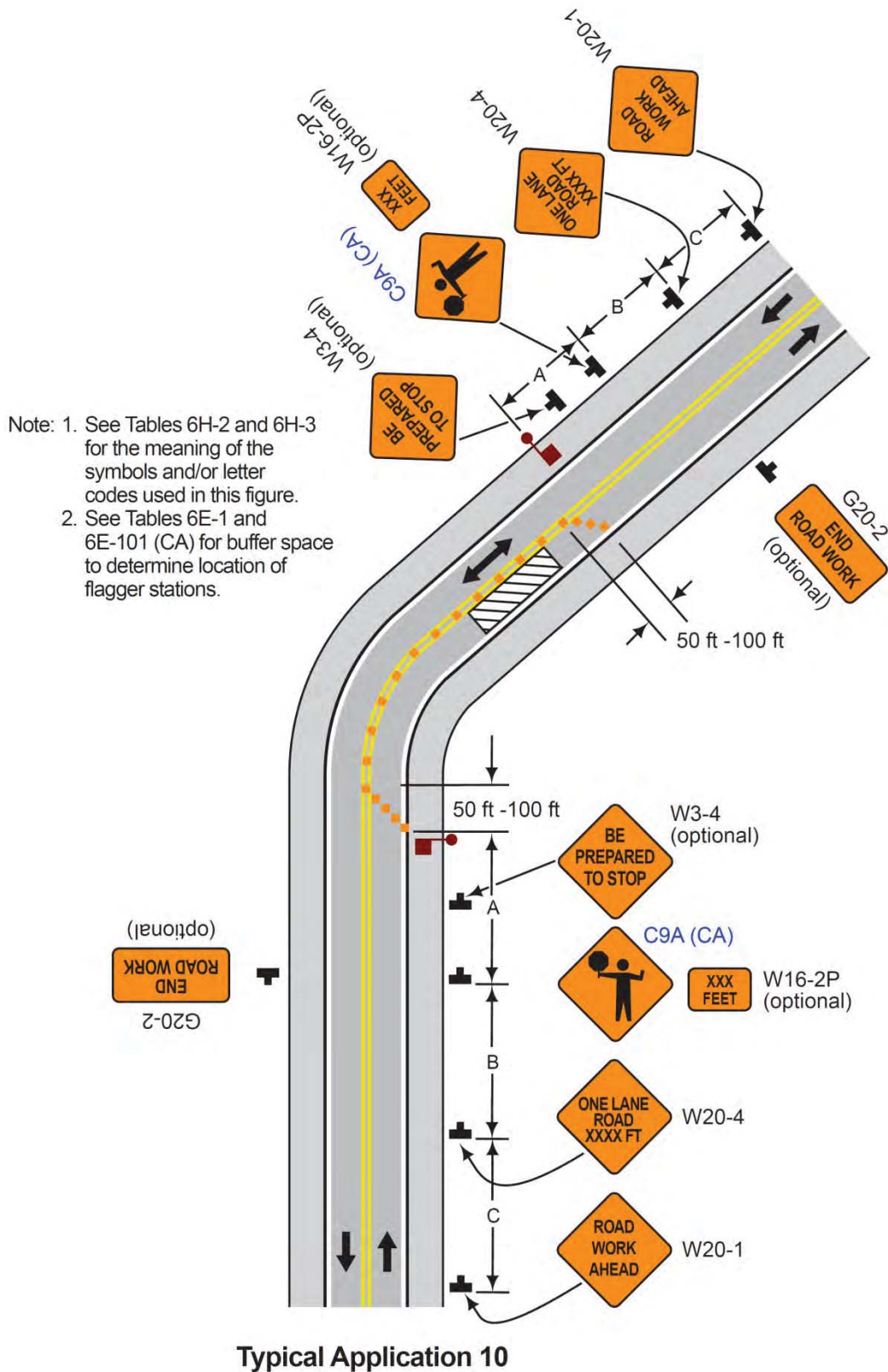


Figure 6H-27. Closure at the Side of an Intersection (TA-27)

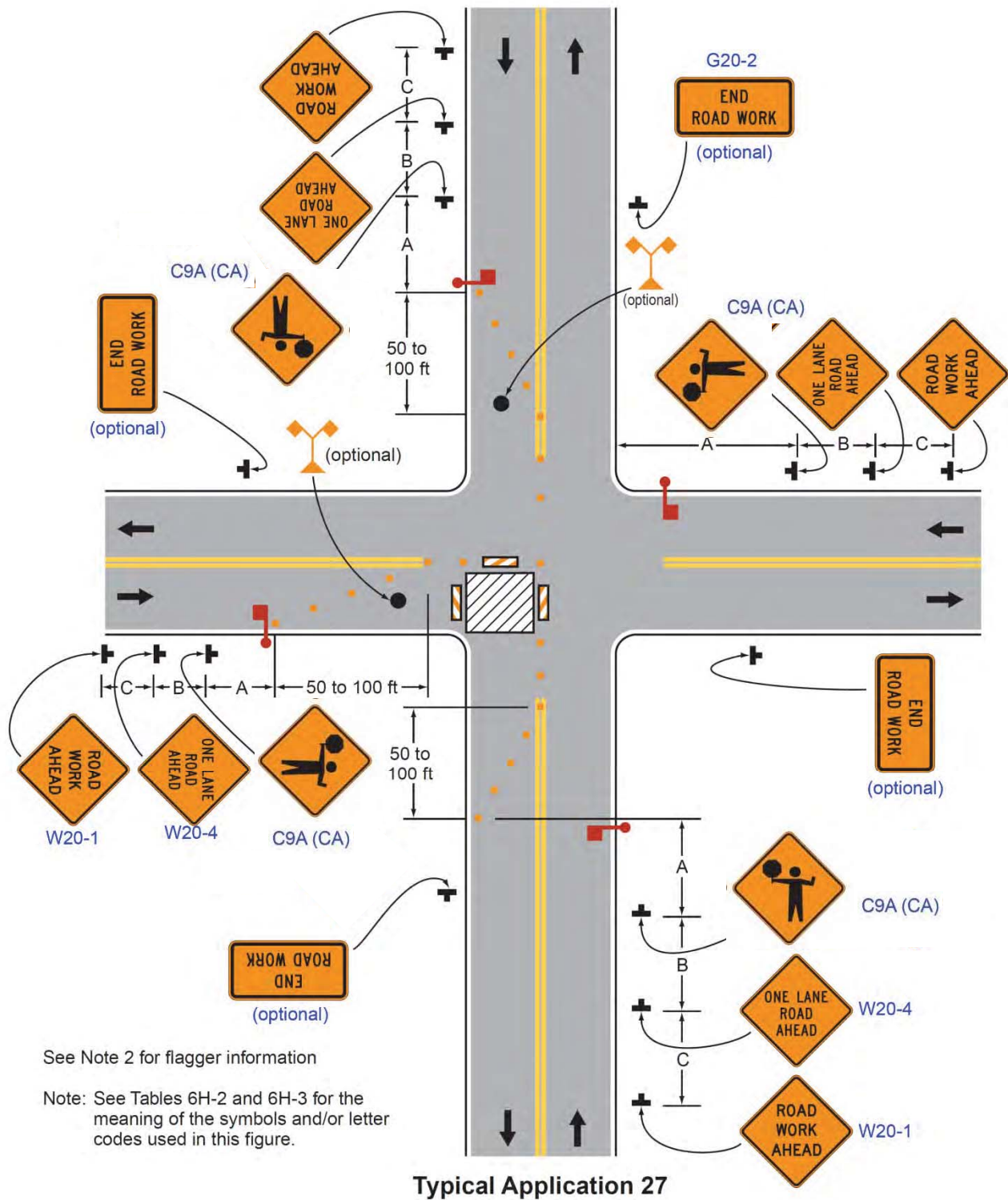


Figure 6H-18. Lane Closure on a Minor Street (TA-18)

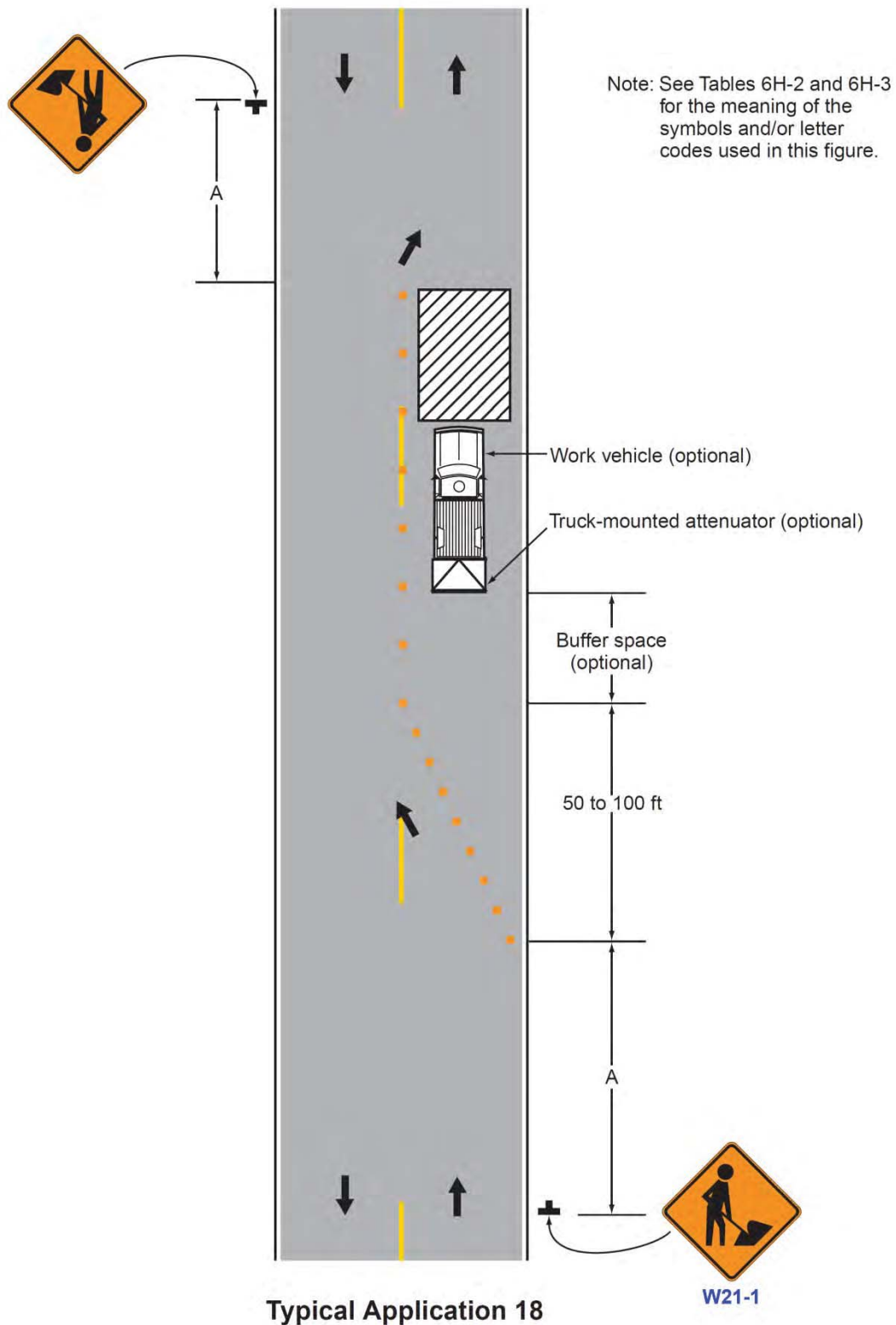
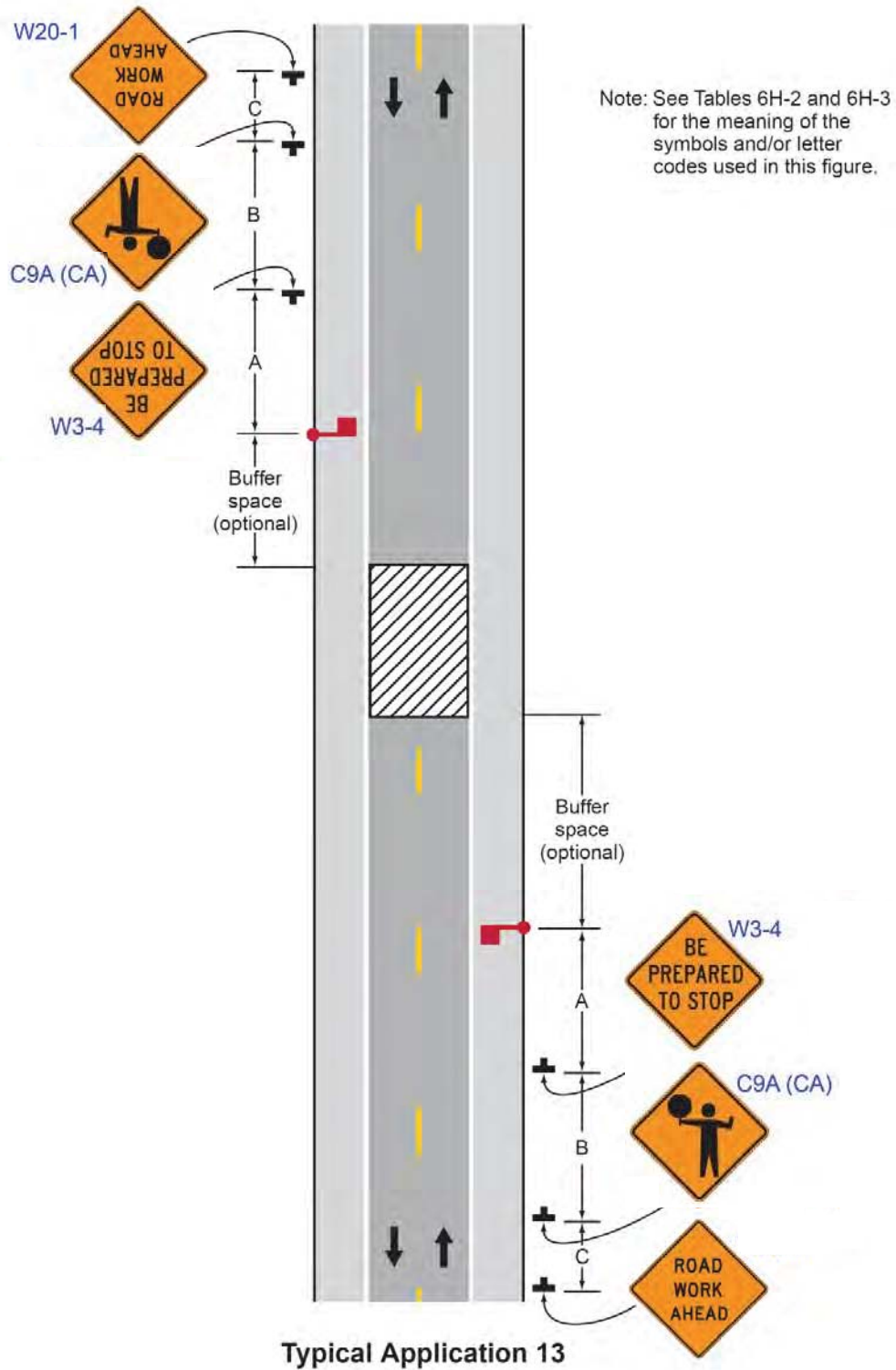


Figure 6H-13. Temporary Road Closure (TA-13)



California MUTCD 2014 Revision 2 Sign Charts

Sheet 14 of 15 - Temporary Traffic Control Signs

This chart contains commonly used signs in California, and is not meant to be used as a comprehensive or stand-alone design tool.

California signs are designated with a (CA) suffix, otherwise, Federal 2009 MUTCD sign designations are shown.

For sign specification details, visit www.dot.ca.gov/trafficops/tcd/specs.html. For sign policy and guidance, visit www.dot.ca.gov/trafficops/camutcd/.



C2 (CA)	C2 (CA) Alternate	C9A (CA)	C12 (CA)	C19 (CA)	C19 (CA) Alternate	C20 (CA)	C20A (CA)	C20B (CA)	C23 (CA)
C23A (CA)	C23B (CA)	C24 (CA)	C27 (CA)	C29 (CA)	C30 (CA)	C30 (CA) Alternate	C30A (CA)	C31A (CA)	C37 (CA)
C37 (CA)	C38 (CA)	C40 (CA)	C40A (CA)	C43 (CA)	C44 (CA)	C45 (CA)	C46 (CA)	C46P (CA)	C47A (CA)
C47B (CA)	E5-2	E5-2a	E5-3	G20-1	G20-2	G20-4	G20-5aP	M4-8	M4-8a
M4-8b	M4-9	M4-9a	M4-9b	M4-9c	M4-10	R1-7	R1-8	R2-6aP	R2-12
R3-1	R3-2	R3-3	R4-1	R4-9	R9-8	R9-9	R9-10	R9-11	R9-11a
R10-6	R11-2	R11-2 (Alternate)	R11-2 (Alternate)	R11-3a	R11-4	SC3 (CA)	SC5 (CA)	SC6A (CA)	SC6B (CA)
SC6-3 (CA)	SC6-4 (CA)	SC7 (CA)	SC8 (CA)	SC9 (CA)	SC9 (CA) Alternate	SC10 (CA)	SC10 (CA) Alternate	SC11 (CA)	SC13 (CA)
SC15 (CA)	SC18 (CA)	SC19 (CA)	SC20 (CA)	SC21 (CA)	W1-1	W1-2	W1-3	W1-4	W1-6
W1-8	W3-1	W3-2	W3-3	W3-4	W3-5	W3-5a	W4-1	W4-2	W4-3

California MUTCD 2014 Revision 2 Sign Charts

Sheet 15 of 15 - Temporary Traffic Control Signs

This chart contains commonly used signs in California, and is not meant to be used as a comprehensive or stand-alone design tool.

California signs are designated with a (CA) suffix, otherwise, Federal 2009 MUTCD sign designations are shown.

For sign specification details, visit www.dot.ca.gov/trafficops/tcd/specs.html. For sign policy and guidance, visit www.dot.ca.gov/trafficops/camutcd/.

California Department of Transportation
Division of Traffic Operations, Office of Traffic Engineering
Effective April 7, 2017



W4-5	W4-5P	W4-6	W5-1	W5-2	W5-3	W6-3	W6-4	W8-1	W8-2	
W8-3	W8-4	W8-6	W8-7	W8-8	W8-9	W8-15	W8-15P	W8-17	W8-17P	
W8-18	W8-23	W8-24	W8-25	W9-3	W12-1	W12-2	W13-1P	W14-3	W16-2P	
W20-1	W20-1 Alternate	W20-2	W20-3	W20-3 Alternate	W20-4	W20-5	W20-5a	W20-8 Paddle		
W21-1	W21-1a	W21-2	W21-3	W21-4	W21-5	W21-5a	W21-5b	W21-6	W21-7	
W22-1	W22-2	W22-3	W23-1	W24-1	W24-1cP	W86 (CA)	W90 (CA)	Channelizer (CA)	Plastic Drum	
Portable Delineator	Tubular Markers	Traffic Cones	Type I Barricade	Type II Barricade	Type III Barricade	OM1-3 Type I Object Marker	Type N-3 (CA) Object Marker	Left Type P (CA) Markers	Right Type P (CA) Markers	Type R (CA) Object Marker