



# Transportation and Public Works Open House

## Thanks for coming!

Below are the projects highlighted at the Open House.

San Lorenzo River Levee  
Annual Vegetation  
Management



Stormwater Pump Station  
No. 1 and Soquel Pump  
Station



Title 22 / Recycled  
Water Facility



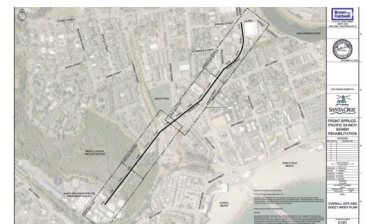
Wastewater Treatment  
Facility Headworks  
Rehabilitation



Wastewater  
Master Plan



Front-Spruce-Pacific  
54" Sewer  
Rehabilitation



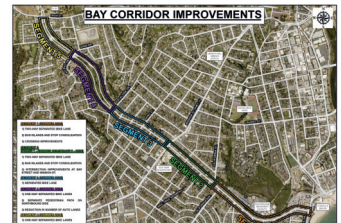
Advanced Dilemma Zone  
Protection and Unsignalized  
Crossing Improvement



2024 Pavement  
Rehabilitation  
Project



Bay Street Protected  
Bike Lanes and  
Pedestrian Path



Swanton/Delaware  
Multi-Use Trail



Multi-Space Pay Station Pilot



Murray Street Bridge Seismic Retrofit



West Cliff - Bethany Curve Culvert Project



Street Sweeping Pilot Program



Recycling Center Stormwater Quality Improvement



Rail Trail Segment 7 Phase II



Rail Trail Segments 8 and 9



Scan for a complete list of Transportation and Public Works Projects

