

THE JOINT REPORT ON SEXUAL ASSAULT

For the Santa Cruz City Council

Presented by
The Commission for the Prevention of Violence Against Women
&
The Santa Cruz Police Department

November 13, 2012

TABLE OF CONTENTS

Page 3 Introduction

- *Letter to the Council and our Community*
- *CPVAW and SCPD Information*

Page 4 Summary

- *Overview of this Report*
- *Summary of Findings*

Page 5 Definitions and Data Collection

Pages 6 - 11 Findings

Page 12 Objectives

- *Response to Findings*

Page 13 Resources

INTRODUCTION

Santa Cruz City Council and Community:

The City of Santa Cruz Commission for the Prevention of Violence Against Women (CPVAW) and the Santa Cruz Police Department (SCPD) present the second Joint Report on Sexual Assault which includes cases reported during 2008, 2009, and 2010.

With this second report, the collaboration between our agencies again provides the opportunity to gather reliable data regarding local reported sexual assaults. We also continue to work together coordinating efforts to provide information and outreach to our community during critical events.

Many of the data points in this current report reflect similar trends as seen in the first Joint Report (which used data from 2005, 2006, and 2007).

Two areas of note in this current report are information gathered on the day of the week and the continued desire for information regarding status of cases. Also of note are the strides in technology advancement for investigations, particularly in the area of DNA.

Our top priorities remain prevention, education, and investigation. We value the community's engagement in seeking effective solutions to respond to and prevent sexual assaults.

With our community's support, together we can all make the City of Santa Cruz safe and welcoming for all.

Respectfully submitted,

Patricia Christie
2012 Commission Chair

Kevin Vogel
Chief of Police

THE COMMISSION FOR THE PREVENTION OF VIOLENCE AGAINST WOMEN (CPVAW)

www.cityofsantacruz.com

CPVAW was established by ordinance in 1981. For more than 30 years, CPVAW has worked toward the goal of a violence-free world for women – through programs, events, partnerships, education, community involvement and public policy. CPVAW works to raise awareness and encourage active involvement in our community regarding the issues of domestic violence, sexual assault and sexual harassment.

CPVAW consists of seven city resident volunteers who are appointed by the Santa Cruz City Council.

THE SANTA CRUZ POLICE DEPARTMENT (SCPD)

www.santacruzpolice.com

SCPD has a long-standing commitment to providing timely, professional and compassionate service to any victim of sexual assault. SCPD continues to focus on the overall needs of the sexual assault victim from the initial report through the criminal court process. SCPD is committed to providing the highest quality, on-going training in sexual assault investigation to the patrol officers, investigators, victim's advocate and command staff.

OVERVIEW OF THIS REPORT

BACKGROUND

The Commission for the Prevention of Violence Against Women (CPVAW) and the Santa Cruz Police Department (SCPD) have again partnered to produce an overview of the sexual assaults reported to the Santa Cruz Police during 2008, 2009, and 2010. This is the second, three-year Joint Report on Sexual Assault compiled by CPVAW/SCPD; the previous report included data from 2005, 2006, and 2007.

2008, 2009, 2010 Report

This current report focuses on the 172 sexual assaults including sexual battery, rape, and attempted rape as well as other sex crimes that were reported to the SCPD during 2008, 2009, and 2010. A variety of data points were reviewed from redacted reports from SCPD. The chart to the right highlights several key findings. This data is used to better determine patterns, develop effective responses, and consider educational campaigns.

This report does not include victims younger than 14 years old.

This report also does not include sexual assaults that occurred at the University of California Santa Cruz. UCSC is a separate jurisdiction, with its own police department. <http://police.ucsc.edu>

PURPOSE

The purpose of the report is to foster a better understanding for our community members regarding the issue of sexual assault, dispel misinformation and misconceptions, and identify local trends and key findings. The report is used to tailor educational outreach, define opportunities for our community to reduce and eliminate sexual assault, and identify possibilities for SCPD officer trainings in sexual assault investigations.

SUMMARY OF KEY FINDINGS

Sexual Assaults Reported
In the City of Santa Cruz
2008 2009 2010

TOTAL CASES REPORTED	172
YEAR WITH MOST CASES REPORTED	
2009	72
PENAL CODE MOST REPORTED	
243.4 PC - Sexual Battery	101
SUSPECTS	
Total Number	190
Notable Age Range: 20-39 yrs	118
Ethnicity Most Reported	
Hispanic/Latino	73
Caucasian	67
Local Residents	100
VICTIMS	
Total Number	190
Notable Age Range: 14-29 yrs	130
Ethnicity Most Reported	
Caucasian	137
Local Residents	166
CONNECTION/RELATIONSHIP OF SUSPECT AND VICTIM	
Stranger cases	110
Acquaintance/Brief Encounter cases:	77
ALCOHOL INVOLVED IN CASES	84
DAY OF THE WEEK	See pg. 11
ARRESTS	60

DEFINITIONS

The following definitions are listed to provide a better understanding of the data contained in this report:

California Penal Codes

Sexual assault in California is defined as any sexual activity against the consent of the victim by means of force, threat of force, violence, duress, or where the victim is incapable of giving consent or is unconscious of the nature of the act. This includes various penal codes in addition to rape.

- **220 PC Attempted Rape:** attempted unwanted vaginal intercourse
- **261 PC Rape:** unwanted vaginal intercourse
- **243.4 PC Sexual Battery:** unwanted touching on an intimate area of a person's body
- **286 PC Sodomy:** unwanted anal intercourse
- **288 PC Oral Copulation:** unwanted oral intercourse
- **289 PC Penetration with a foreign object:** unwanted penetration of the vagina or anus with a foreign object

Connection between Victim/Survivor and Suspect

- **Acquaintance:** Someone the victim has known for longer than 24 hours
- **Brief Encounter:** Someone the victim has known for 24 hours or less
- **Stranger:** Someone the victim does not know at all

NOTABLE STATEMENT: *This report is unique because it contains data collected from local reported sexual assaults in the City of Santa Cruz. We do not often find comparable data; therefore this report provides information most often specific to the City of Santa Cruz.*

DATA COLLECTION

Data Points Collected from Redacted SCPD Reports

- Total number of reported sexual assault cases
- Breakdown by penal codes
- Suspect: age, ethnicity & residency
- Victim: age, ethnicity & residency
- Connection/relationship between suspect & victim
- Location of assault (geographical beat)
- Alcohol involved by suspect and/or victim
- Seasonal data point (month of assault)
- Day of the week (new data point)
- Weapons involved
- Report made within 24 hours
- Mandated report: doctor, hospital staff, educator
- Arrests made

Considerations

- The data used in most national studies is frequently limited to rape and/or attempted rapes only – omitting all other sexual assault offenses. Correspondingly, the FBI's Uniform Crime Report (UCR) data is inadequate in providing accurate and complete depictions of all sexual assaults. **Consequently, CPVAW and SCPD focus on ALL sexual assaults reported in the City of Santa Cruz.**
- Sexual assaults are one of the most underreported offenses according to experts in the field. Many victims do not report being sexually assaulted because of fear, shame, and/or self-blame. Victims may also not report because of institutional barriers including immigration status, homelessness, and/or cultural challenges. If a report is not made, victims may have a difficult time receiving services or receive no services.

SUMMARY OF FINDINGS

Sexual Assault Cases Reported

TOTAL SEXUAL ASSAULT CASES REPORTED

Data includes all sexual assaults including sexual battery as well as rape and other sexual crimes.

- 2008 - 2010 3 yr period: 172 cases
- 2005 - 2007 3 yr period: 123 cases
- 2003 - 2004 2 yr period: 138 cases

PENAL CODES (220 total penal codes listed)

Note: The total number of penal codes (220) does not equal the number of cases (172) due to multiple penal codes charged in some of the cases.

In 2008:

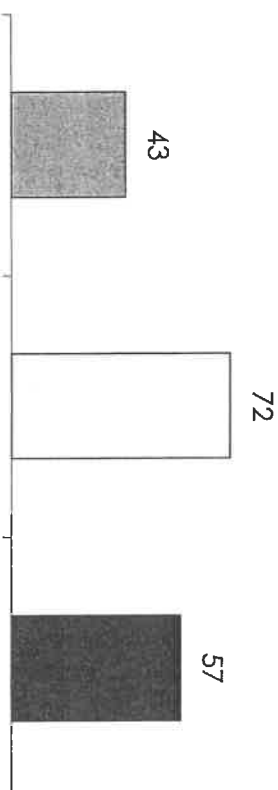
- Sexual assault reports increased from 2007.
- Sexual battery (243.4 PC) increased markedly.

In 2009:

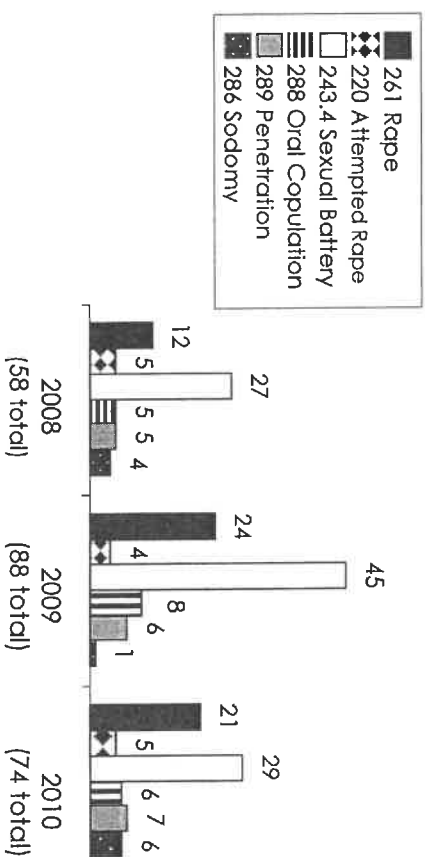
- Sexual assault reports increased notably from 2008.
- Sexual battery (243.4 PC) reports increased markedly.
- Rape (261 PC) reports were the highest in five years.

In 2010:

- Sexual assault reports declined overall from 2009.
- Sexual battery (243.4 PC) reports declined markedly.
- Rape declined by a slight number.



Penal Codes Reported



NOTABLE STATEMENTS:

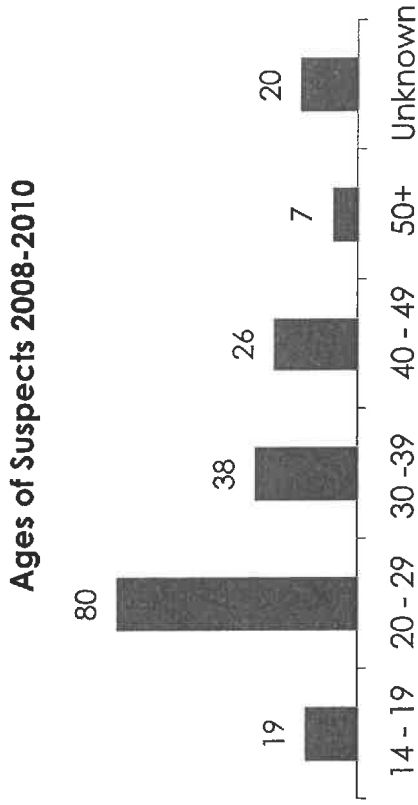
The National Crime Victimization Survey: 2006-2010 states that sexual assault is one of the most under reported crimes, with 54% left unreported.

Studies indicate that homeless women are far more likely to experience violence of all sorts and approximately 25% are homeless mainly because of experiences with violence. (Jasinski, et al., 2005)

FINDINGS (CONTINUED)

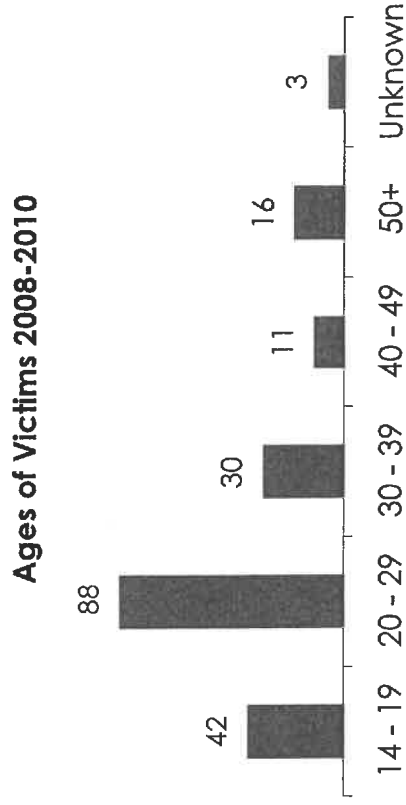
SUSPECTS

- 2008, 2009, 2010 period: 190 total suspects
- The majority of suspects were between the ages of 20 and 39 years of age. This trend is consistent with our last report.
- Of the 190 suspects, 188 were male which is consistent with data provided by the National Institute of Justice.



VICTIMS

- 2008, 2009, 2010 period: 190 total victims
- The majority of victims were between the ages of 14 and 29 years of age. This trend is consistent with our last report.
- Of the 190 victims, 186 were female which is consistent with data provided by the National Institute of Justice.



NOTABLE STATEMENTS:

RAINN (Rape, Abuse, Incest National Network) states that sexual assaults in general constitute crimes primarily against young people.

The number of cases does not equal the number of victims or suspects due to multiple victims/suspects.

FINDINGS (CONTINUED)

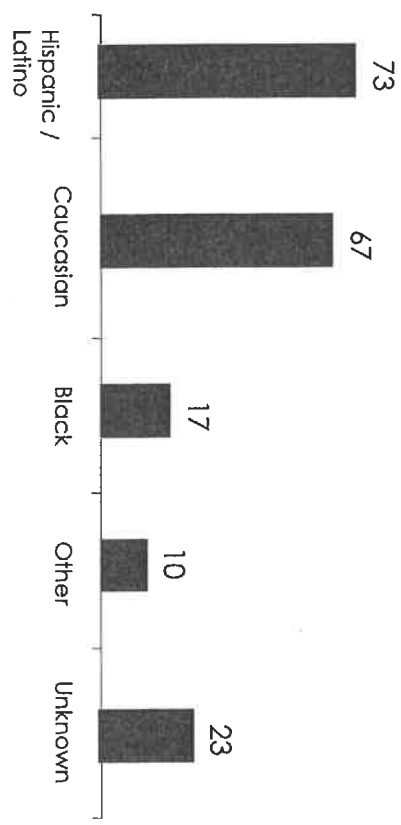
□ SUSPECT ETHNICITY

- Most often the ethnicity of the suspect is initially based on the observation of the victim.
- If the suspect is never located or identified, the victim's initial description of the suspect remains in the report.
- The two highest reported ethnicities of suspects were Hispanic/Latino and Caucasian males. This trend is consistent with our last report.
- Sexual battery was the crime that most often has a Hispanic/Latino suspect described by the victim.

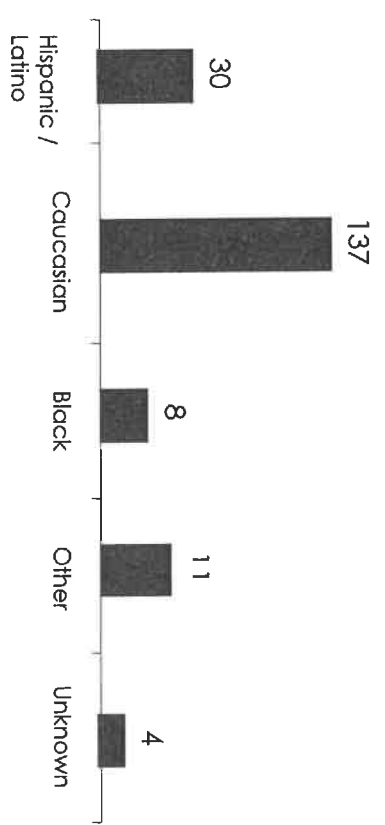
□ VICTIM ETHNICITY

- The three-year 2008, 2009, 2010 period illustrates that Caucasian women reported being victims of sexual assaults. This trend is consistent with our last report.

Total Ethnicities of Suspects 2008-2010



Total Ethnicities of Victims 2008-2010



NOTABLE STATEMENTS:

The Sexual Assault Among Latinas Study (SALAS) found that Latina sexual assault victims did not commonly seek formal help from the criminal justice system by reporting the crime.

According to the California Coalition Against Sexual Assault 2008 Report, 80% - 90% of violent crimes against women are committed by someone of the same racial background as the victim.

FINDINGS (CONTINUED)

SUSPECT / VICTIM CONNECTION

- *Acquaintance*: someone known to the victim for longer than 24 hrs
 - *Brief Encounter*: someone known to the victim for less than 24 hrs
 - *Stranger*: someone unknown to victim
- 93 penal codes listed for Acquaintance and Brief Encounter cases:
- 35 were rape cases
 - 23 were sexual battery cases
 - 14 were oral copulation
 - 12 were penetration with a foreign object
 - 5 or fewer were either sodomy or attempted rape

127 penal codes listed for reported Stranger assaults:

- 78 were sexual battery reports
- 22 were rape reports
- 10 were attempted rape
- 6 or fewer were either oral copulation, penetration with a foreign object, and sodomy.

Note: The number of victims (190) does not equal the number of penal codes (220) due to multiple penal codes listed in some of the cases.

RESIDENCY

DEFINITION: A local is defined as someone who resides in the County of Santa Cruz.

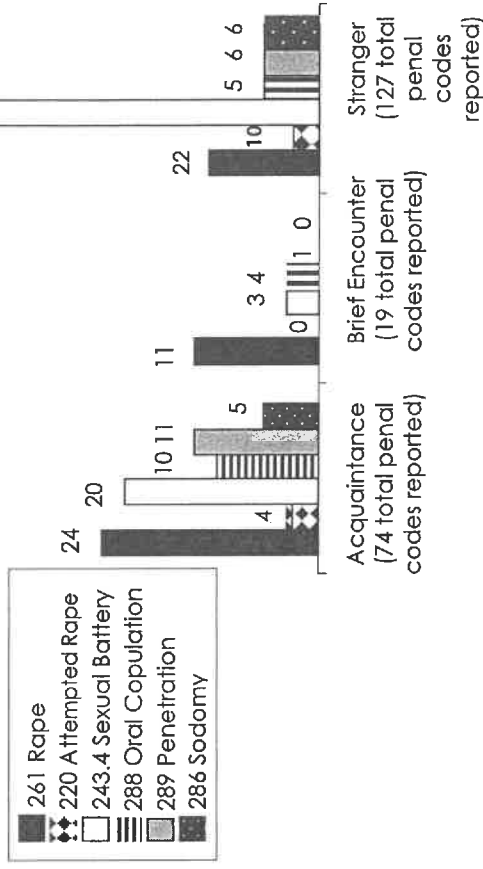
- Most victims live within Santa Cruz County. This trend is consistent with our last report.
- The data regarding suspects is inconclusive due to the high number of unknowns. When identified, the suspect was a local resident.

NOTABLE STATEMENT:

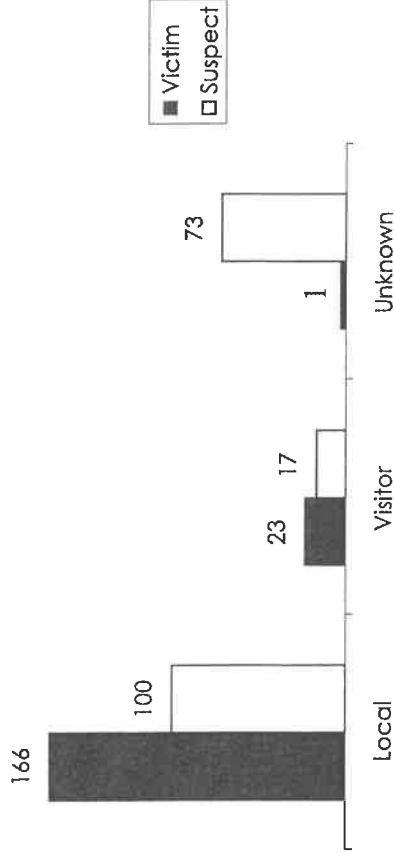
Nationally, the connection between the rape crime victims and suspects is most often identified as acquaintance. These studies typically do not track all sexual assault crimes which include sexual battery as well as rape or attempted rape as is used in this report.

The Bureau of Justice Statistics stated that 40% of sexual assaults and rapes involved someone known to the victim. (Sexual Violence Roundtable, 2011)

Penal Codes Reported



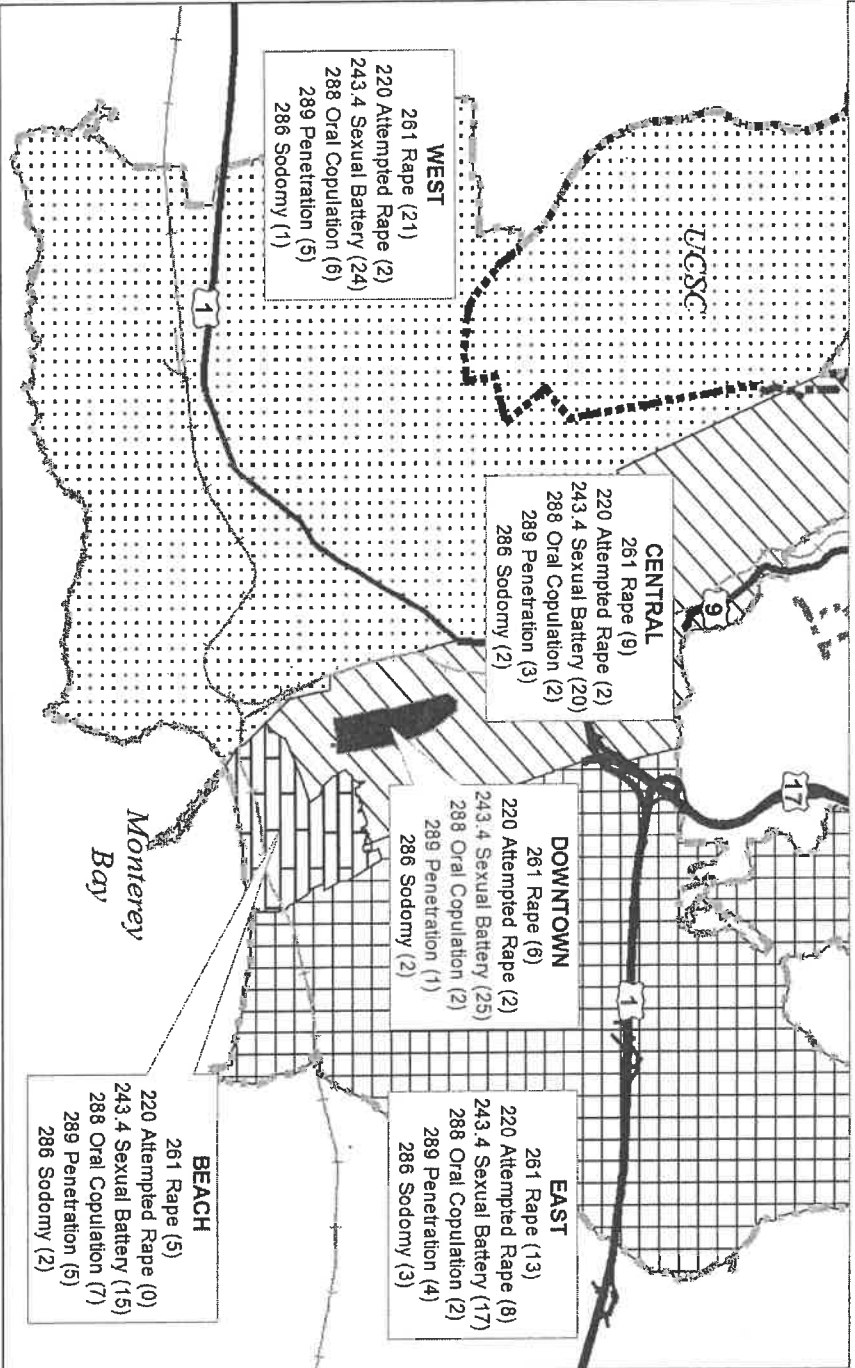
Victims and Suspects: Local or Visitor: 2008-2010



FINDINGS (CONTINUED)

LOCATION OF ASSAULTS

Cases Reported by Geographic Beat 2008-2010



West Central Downtown East Beach

- The SCPD divides the city into five geographical beats.
- Sexual battery was the most reported sexual assault throughout the city.
- The West beat had the most sexual battery and rapes reported.

FINDINGS (CONTINUED)

MANDATED REPORTS

- Of the 172 sexual assault cases, 24 were mandated reports. This trend is consistent with our last report.

REPORTS MADE WITHIN 24 HOURS

- 132 of the cases were reported within the first 24 hours of the assault. This trend is consistent with our last report.

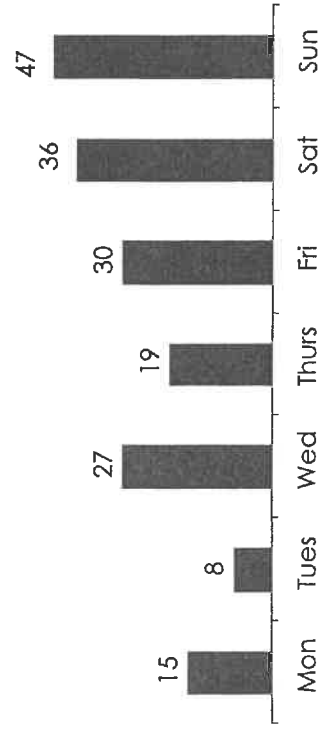
SEASON/TIME OF YEAR

- Incidents are reported throughout the year; no season shows any major differences in number of incidents reported.
- Local data indicates that December has the lowest number of sexual assault reports. This follows national trends.

DAY OF THE WEEK

- The day of the week was a new data point collected for the 2008, 2009, and 2010 reporting period.
- Data illustrates Fridays, Saturdays, and Sundays as well as Wednesdays have the most reported sexual assaults.

Total Incidents by Day of the Week 2008-2010



ALCOHOL

- Following the national trend, alcohol is involved in nearly half of the 2008, 2009, 2010 local reported cases. This trend is consistent with our last report.
- Numerous studies have found alcohol is the most common drug found in facilitated sexual assault cases. www.Calcasa.org

WEAPONS

- 2008, 2009, and 2010 data reveals that weapons are not typically used during a sexual assault. This trend is consistent with our last report.

ARRESTS

- Of the 172 cases, there were a total of 60 arrests made in 2008, 2009, and 2010.
- Regarding the outcome of arrests, the status of cases from the District Attorney's office is still not available to CPVA

NOTABLE STATEMENTS:

SCPD in partnership with the State Attorney General's office obtained an arrest in the high profile 2008 Kind Grind sexual assault case using familial DNA.

In 2009, the Watsonville Police Department arrested a serial gropor who committed crimes in both Watsonville and downtown Santa Cruz. After the arrest, sexual battery reports in the city of Santa Cruz declined.

More than half of sexual assaults against college women occurred off-campus. The majority of assaults took place between midnight and 6 a.m. (National Institute of Justice, The Campus Sexual Assault Study, 2007)

OBJECTIVES - RESPONSE TO FINDINGS

Based on the findings in this report, CPVAW and SCPD have the following measurable objectives:

- **Objective 1: Address unreported sexual assaults – increase victim reporting**
 - *Approach includes:*
 - Outreach to vulnerable populations – such as homeless, teen, and Latina women;
 - Partner with schools to raise awareness about sexual assault, safety, importance of reporting, and the impact of alcohol;
 - Work with service providers to formulate best community response strategy; and
 - Provide information in English and Spanish (ex: CPVAW / SCPD red bordered notices).
- **Objective 2: Decrease incidents of sexual assaults**
 - *Approach includes:*
 - Fund community and school safety skills classes;
 - Provide Engaging the Bystander workshops;
 - Annual Take Back our Streets march;
 - Encourage and sponsor culturally competent programs that educate males in our community; and
 - Provide information in English and Spanish.
 - Track real-time crime data to better determine sexual assault densities by day of week.
- **Objective 3: *Priority* Pursue access to the status of cases from the District Attorney's Office**
 - *Approach includes:*
 - Work with Court Watch Santa Cruz to follow sexual assault and domestic violence cases in the judicial system; and
 - Identify barriers and work with other interested agencies / coalitions to address this issue.
- **Objective 4: Strengthen community, city and educational partnerships**
 - *Approach includes:*
 - Continue to partner with Santa Cruz City Schools in providing prevention and education programs;
 - Partner with local providers to identify barriers to services for vulnerable populations and strategies to overcome them; and
 - Continue to strengthen CPVAW partnership with UCSC.

SANTA CRUZ COUNTY RESOURCES

URGENT RESPONDERS

Acknowledgement of those who respond to incidents of sexual assault and assist the victim/survivors and investigation.

- Sexual Assault Response Team (SART)
- Victim Advocate from the City of Santa Cruz Police Department (SCPD)
- Victim Advocates from the Women's Crisis Support-Defensa de Mujeres
- Law Enforcement
- Medical Staff

LOCAL RESOURCES

Information on local agencies that assist those who have experienced sexual assault.

- Women's Crisis Support ~ Defensa de Mujeres
Santa Cruz Office: (831) 425-4030
24-Hour Crisis Line: 1-(888) 900-4232
www.wcs-ddm.org
- Survivors Healing Center
(831) 423-7601
www.fsa-cc.org/survivors-healing-center/
- Victim Services – Santa Cruz District Attorney's Office
(831) 454-2400
dao@co.santa-cruz.ca.us

PROGRAM PARTNERS

- Women's Crisis Support - Defensa de Mujeres
- Walnut Avenue Women's Center
- Homeless Resource Center
- Santa Cruz City Schools
- Leonie Sherman, Lead Self-Defense Instructor
- Survivors Healing Center
- Downtown Association
- Women's Center at UCSC
- Take Back Santa Cruz
- SC Neighbors
- Safe Place Network Businesses
- PRIDE Program
- Teen Public Safety Academy
- English Citizen's Police Academy
- Spanish Citizen's Police Academy

