



DELAWARE ADDITION
MASTER PLAN
2120 Delaware Avenue, Santa Cruz, CA 95060

Table with 2 columns: REVISION, DATE. Includes revisions for 07.06.2016, 09.01.2016, and 11.01.2016.

DATE: 1 MAY 2016
JOB No: 1405
PHASE: LAND-USE APPLICATION
ISSUED FOR:
PERMIT No:
SCALE: 1" = 50'

SHEET TITLE
REVISED VESTING
TENTATIVE MAP

AREA SUMMARY

Table with columns: Phase, Common Area, SF, Acres. Summarizes area for Phases 1A, 1B, 1C, 2, and 3.

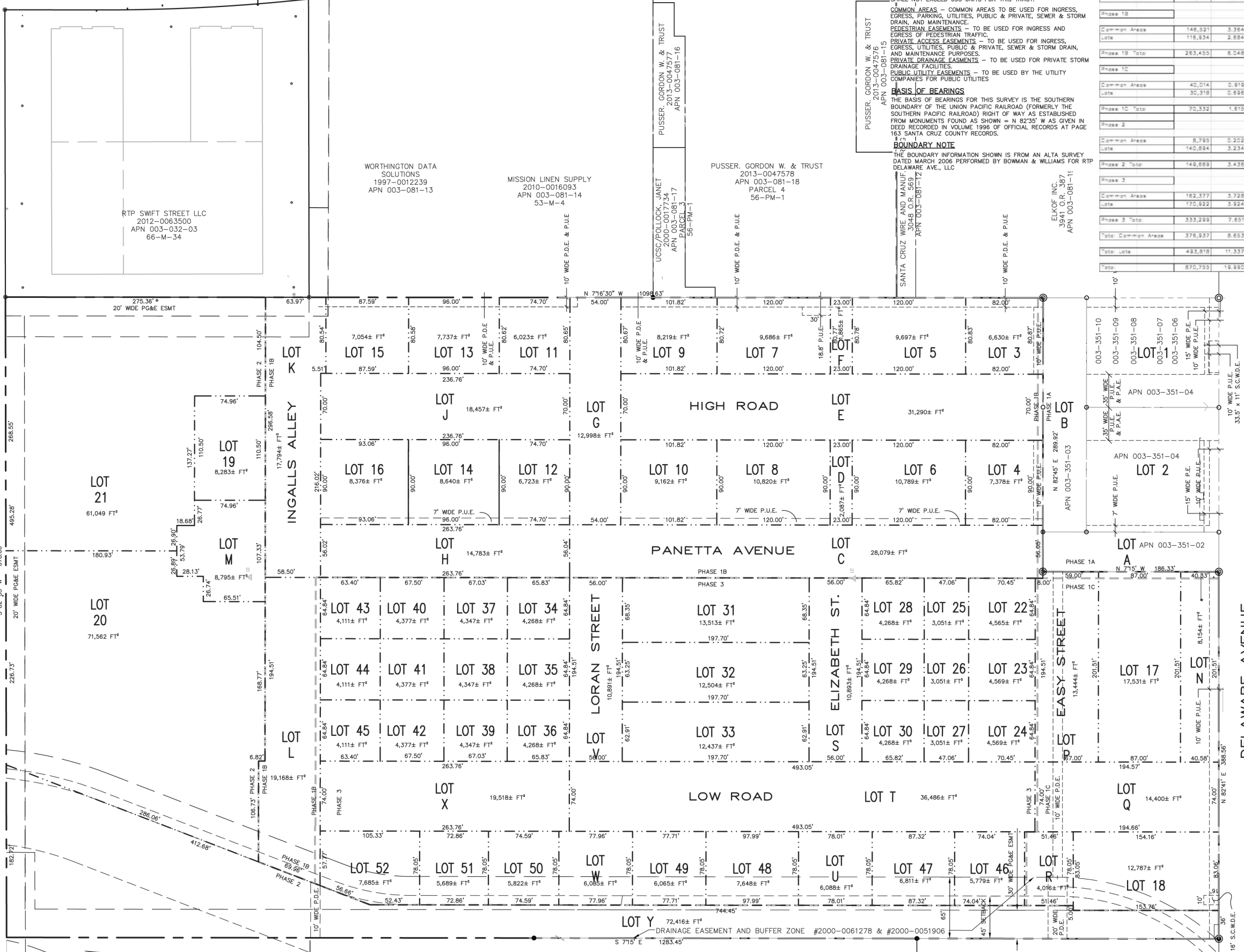
LOT AREAS

Table with columns: Parcel, SF, Acres. Lists areas for individual lots (LOT 1 through LOT 52) and common areas across various phases.

CONDOMINIUM PLAN
INDIVIDUAL CONDOMINIUM UNITS WILL BE ESTABLISHED BY CONDOMINIUM PLAN(S) FOR INDIVIDUAL TRACT SUBDIVISION LOT(S). SAID CONDOMINIUM PLAN(S) TO BE SUBSEQUENTLY RECORDED IN ACCORDANCE WITH PROVISIONS OF THE CALIFORNIA CONDOMINIUM ACT, TITLE 6, PART 4, DIVISION 2(E) OF SECTION 1351 OF THE CIVIL CODE.

COMMON AREAS - COMMON AREAS TO BE USED FOR INGRESS, EGRESS, PARKING, UTILITIES, PUBLIC & PRIVATE, SEWER & STORM DRAIN, AND MAINTENANCE.
PEDESTRIAN EASEMENTS - TO BE USED FOR INGRESS AND EGRESS OF PEDESTRIAN TRAFFIC.
PRIVATE ACCESS EASEMENTS - TO BE USED FOR INGRESS, EGRESS, UTILITIES, PUBLIC & PRIVATE, SEWER & STORM DRAIN, AND MAINTENANCE PURPOSES.
PRIVATE DRAINAGE EASEMENTS - TO BE USED FOR PRIVATE STORM DRAINAGE FACILITIES.
PUBLIC UTILITY EASEMENTS - TO BE USED BY THE UTILITY COMPANIES FOR PUBLIC UTILITIES.

BOUNDARY NOTE
THE BOUNDARY INFORMATION SHOWN IS FROM AN ALTA SURVEY DATED MARCH 2006 PERFORMED BY BOWMAN & WILLIAMS FOR RTP DELAWARE AVE., LLC



J:\B&W\234000\234000-32.dwg (234000BASE_Plan-rev3.dwg, 11/17/2016 1:48:53 PM, DWG To PDF.pc3)